

3-Dimensional coupled physical-
biological modelling
the North Atlantic:
impact of biogeochemical parameters
spatial variability

Svetlana Losa, Oceanography Department,
Dalhousie University

Alain F. Vezina, Bedford Institute of Oceanography

Dan Wright, Bedford Institute of Oceanography

Youyu Lu, Bedford Institute of Oceanography

Keith Thompson, Oceanography Department,
Dalhousie University

What is it all about ?

- The coupled model description
 - Physical pool
 - Strategy for coupling
 - Biogeochemical model
- Model validation
- Impact of biological model parameters
 - spatial variability
 - Parameter estimation problem
- Conclusions

The Physical Model

- A North Atlantic circulation model, based on the Los Alamos Parallel Ocean Program (POP) (Smith et al. 1992) with an implicit treatment of the Coriolis term and vertical diffusion.
- The K-profile parameterization (Large et al., 1994) is used for vertical mixing.
- 1 horizontal resolution (10S-80N, 99W-20E).
- 23 vertical levels (10, 20, 35, 55, 75, 100, 135, 185, 260, 360, 510, 710, 985, 1335, 1750, 2200, 2700, 3200, 3700, 4200, 4700, 5200, 5700).

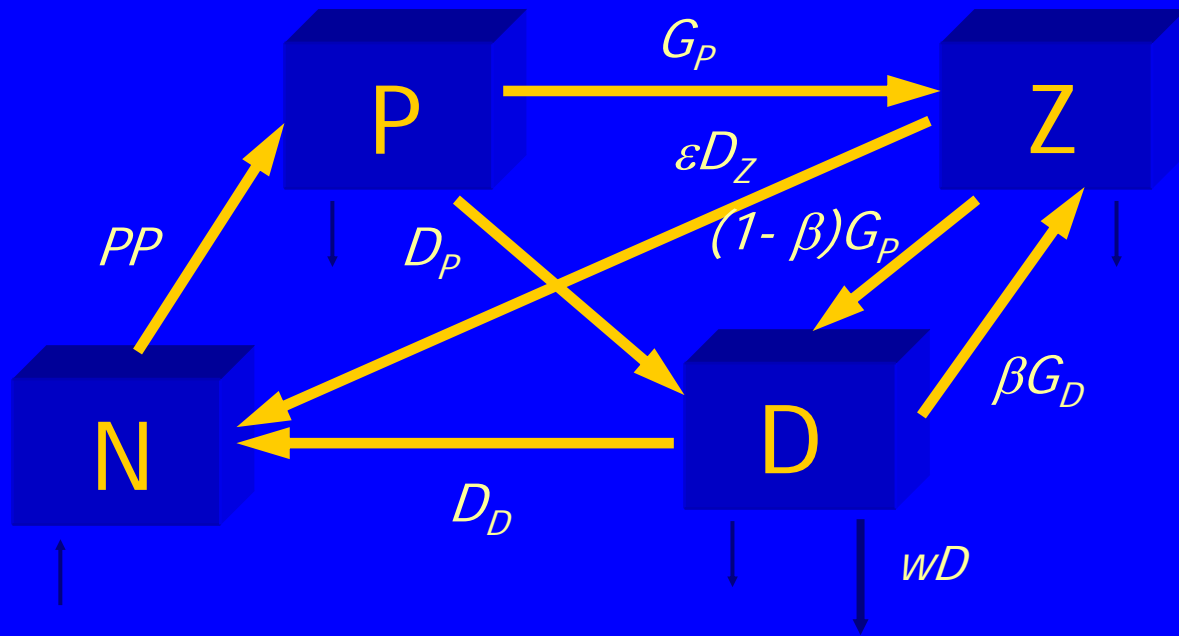
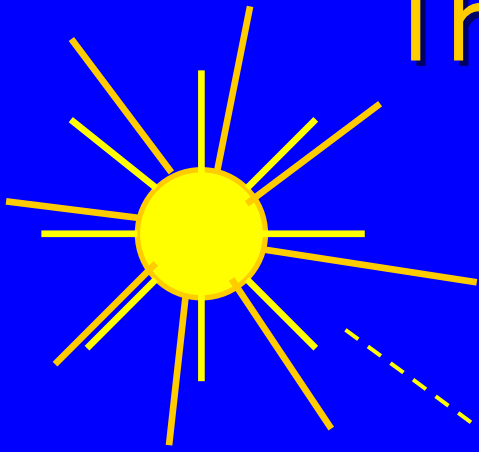
Forcing

- Climatological monthly mean wind stress (da Silva et al., 1994).

Initial and Boundary conditions

- Climatological monthly mean temperature and salinity (I. Yashayaev, Bedford Institute of Oceanography).
- Northern and Southern boundaries are closed with sponge layers at which the water temperature and salinity are relaxed to climatological values.

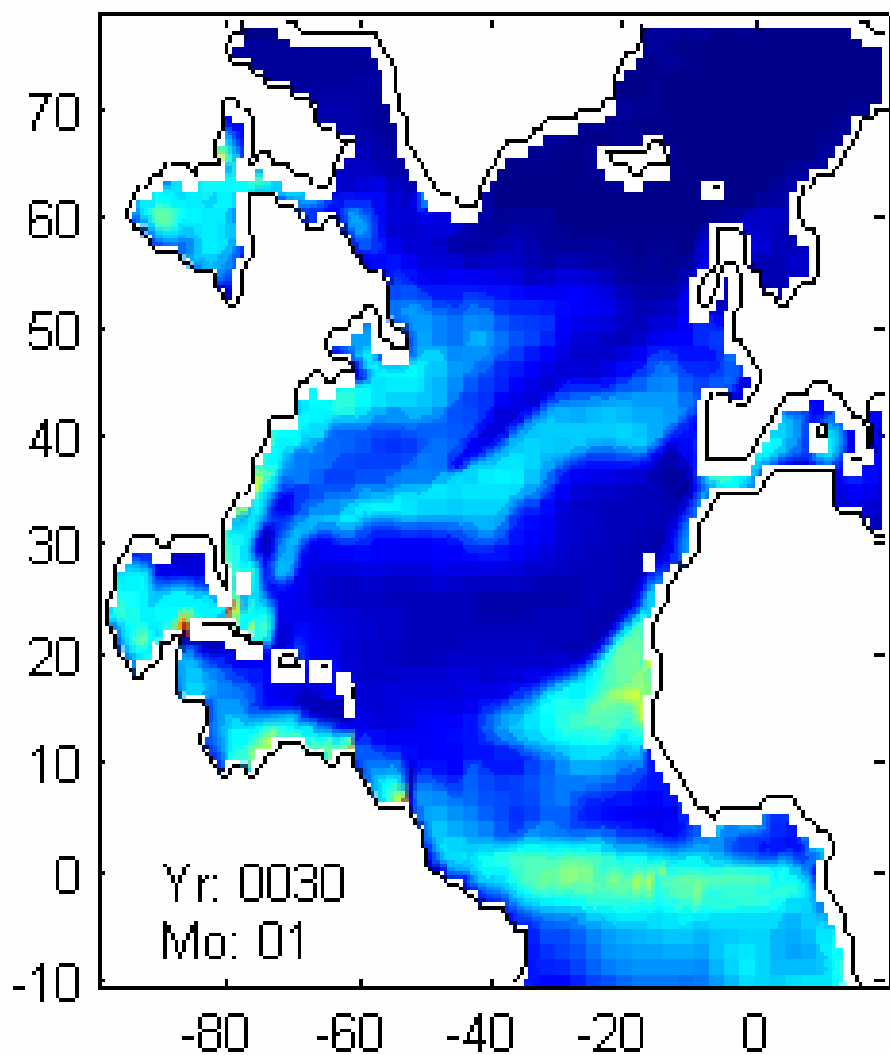
The Ecosystem Model



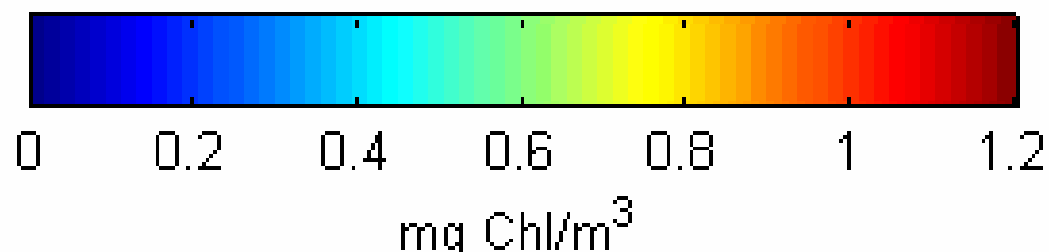
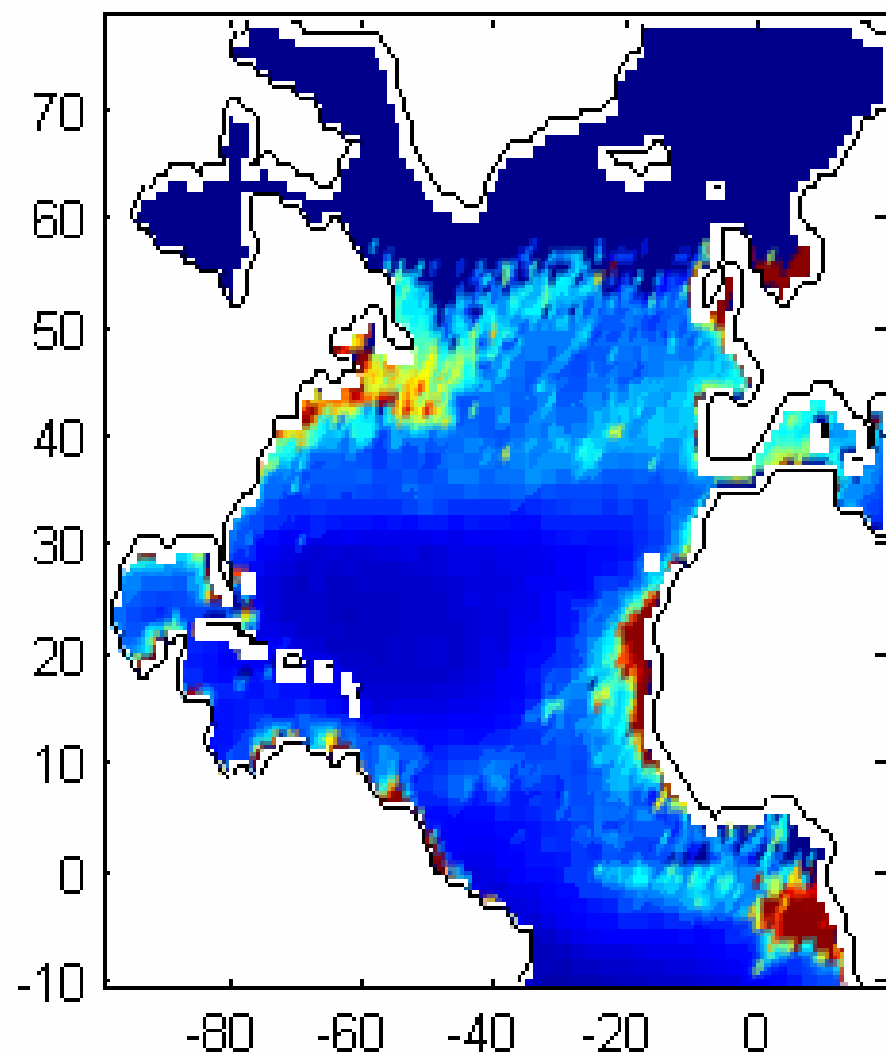
Biological boundary and initial condition

- Climatological seasonal mean nitrate estimates (World Ocean Database, 1998)
- Climatological monthly mean chlorophyll estimates obtained by averaging SeaWiFS data over the period 1997-2003.
- $Z_{init} = 0.02$ and decreases exponentially with the depth.
- $D_{init} = 0.1$

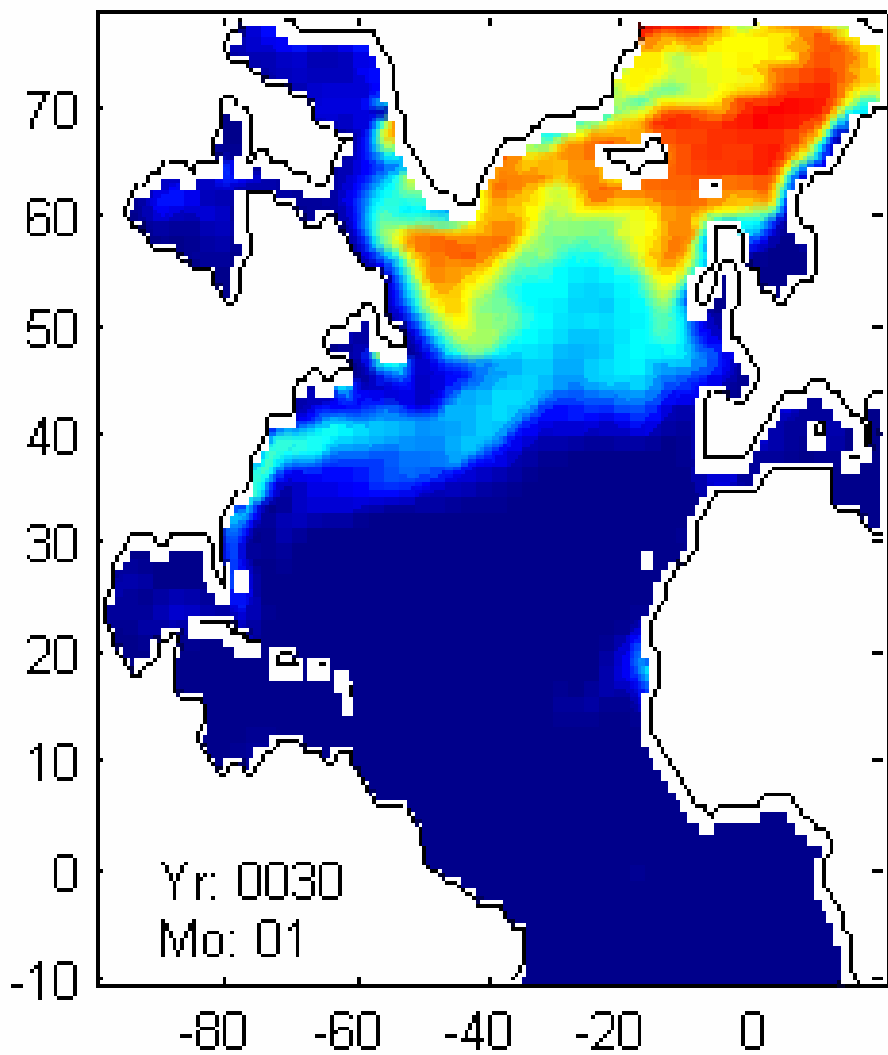
POP_NA_1 Chlorophyll, surface



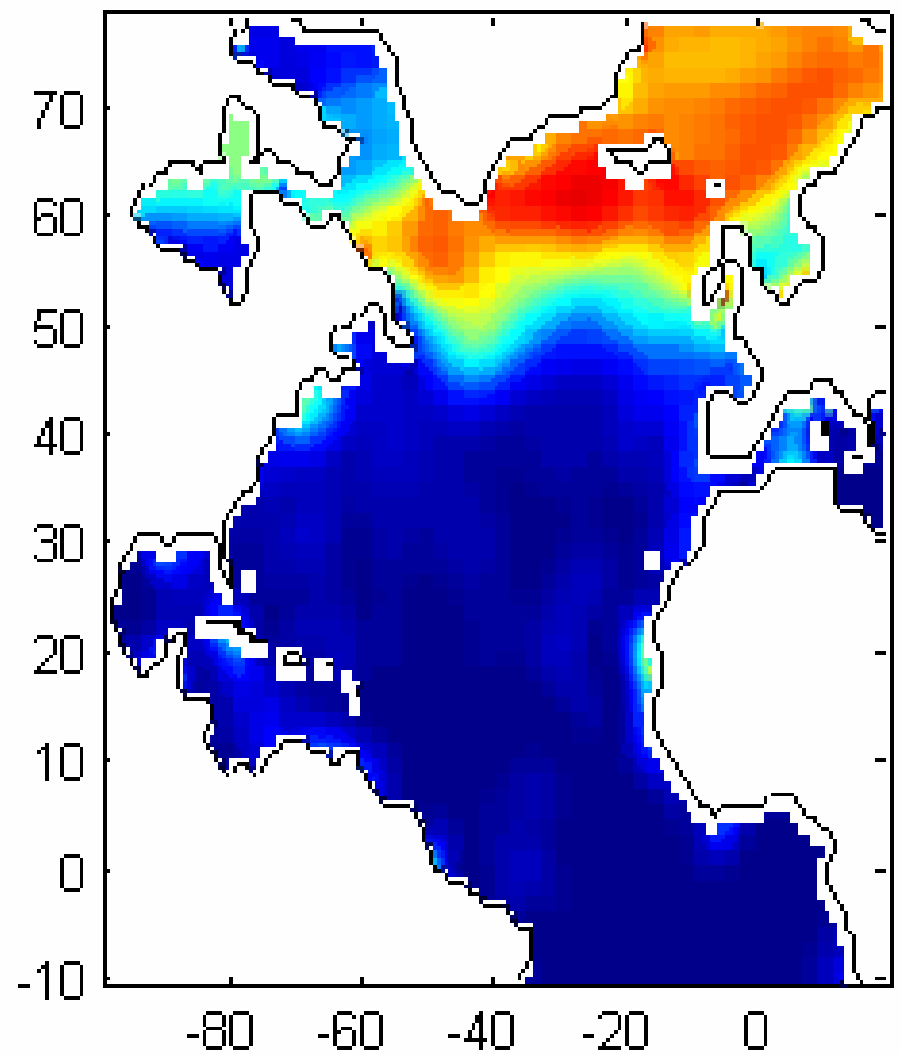
Data



POP_NA_1 DIN, surface



Nitrate data

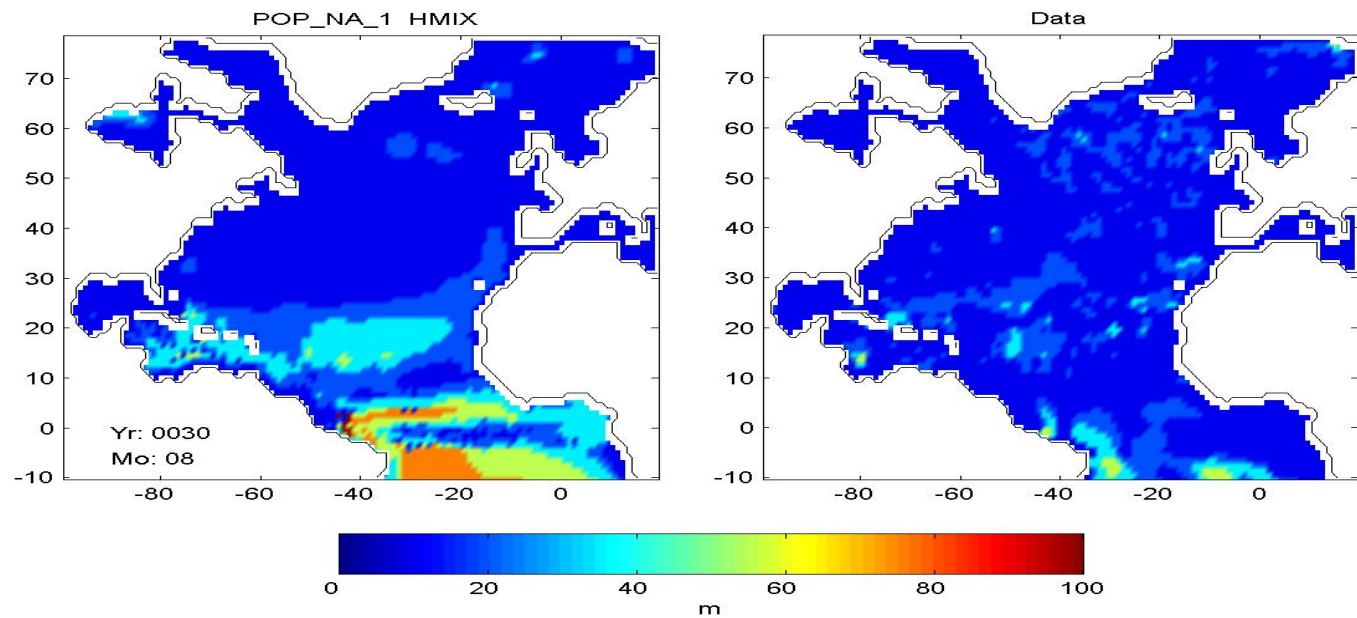
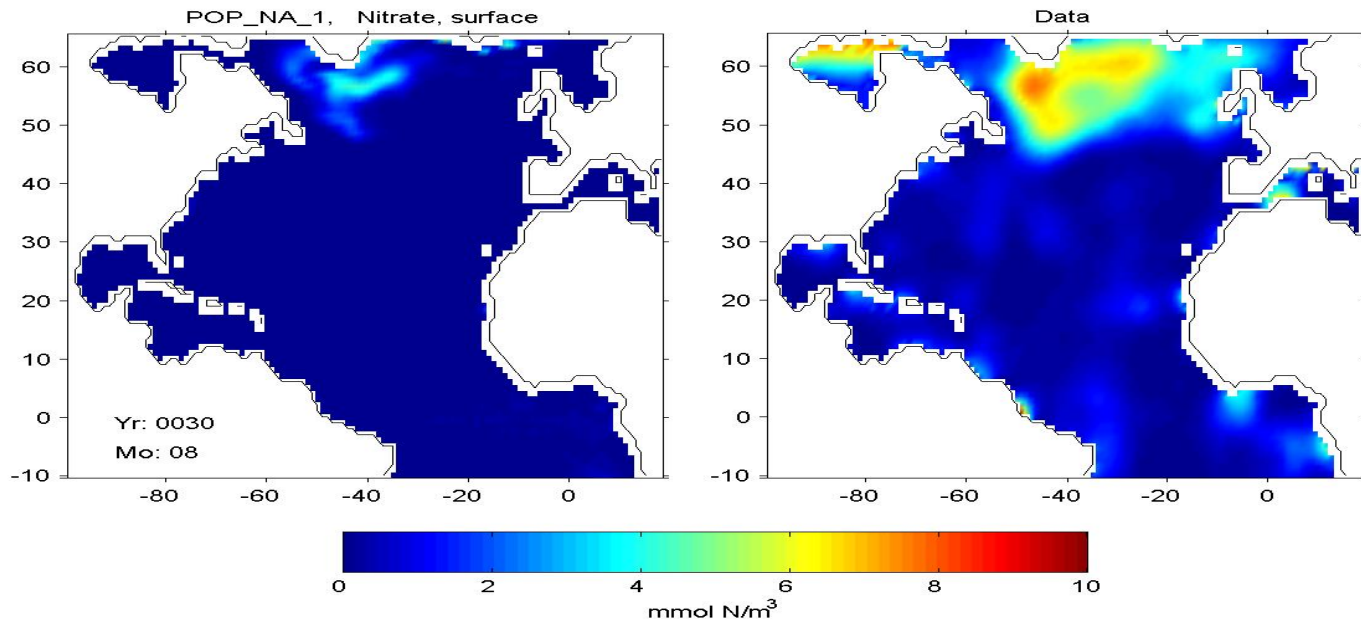


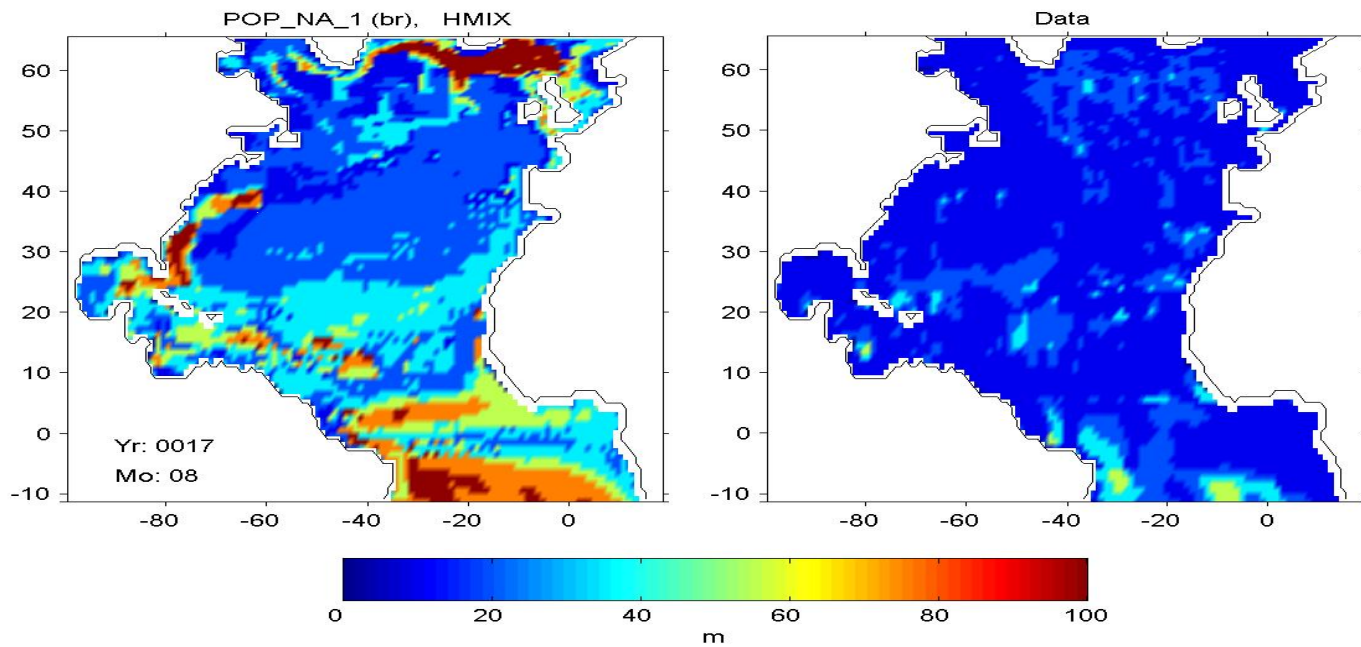
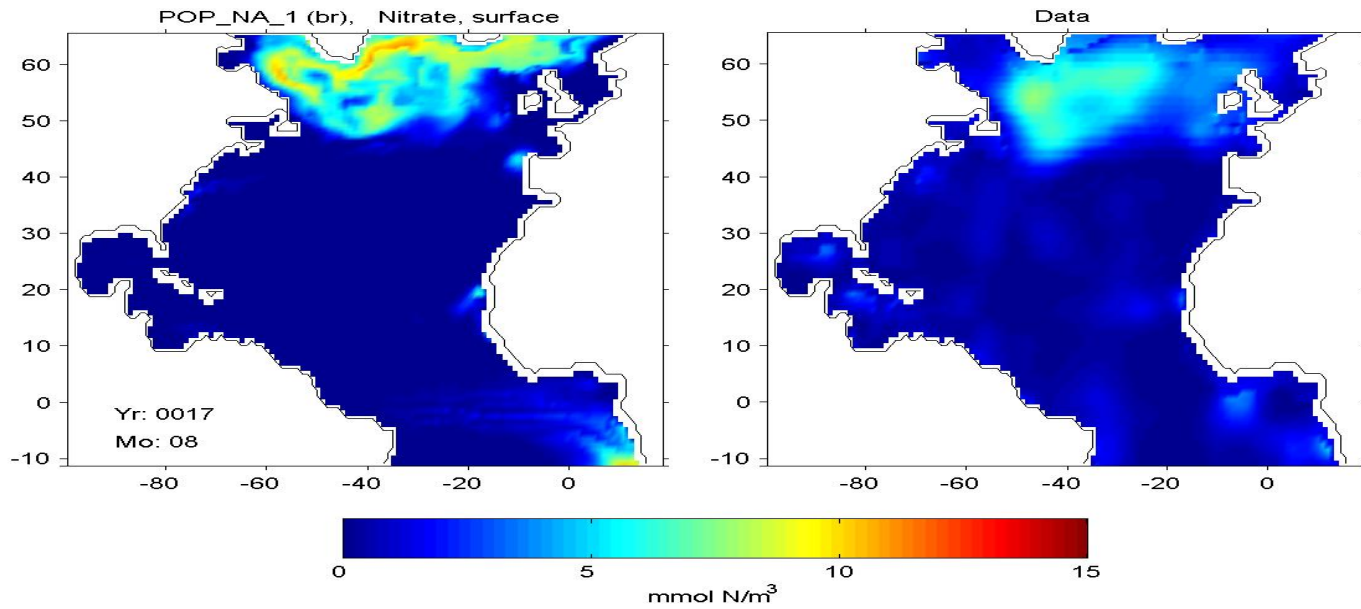
mmol N/m³

The model has captured essential features of the ocean phytoplankton dynamics:

- a strong seasonal cycle in biological productivity in the mid- to high latitudes in the N. Atlantic;
- phytoplankton biomass remains low and relatively invariant year-round in the subtropical to equatorial parts of the basin (except for regions of elevated biomass along west Africa and the equator);
- subsurface chlorophyll maximum.

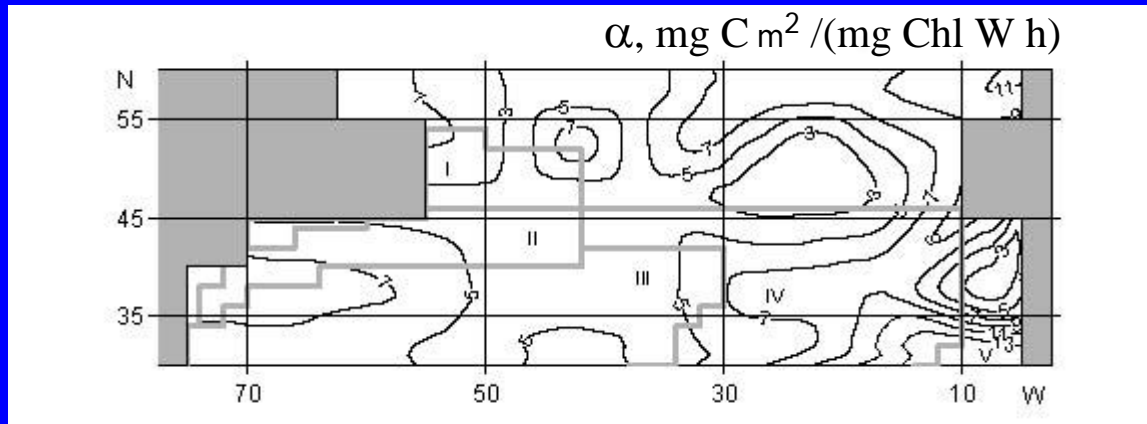
The coupled model had difficulty simulating the nitrate seasonal cycle.





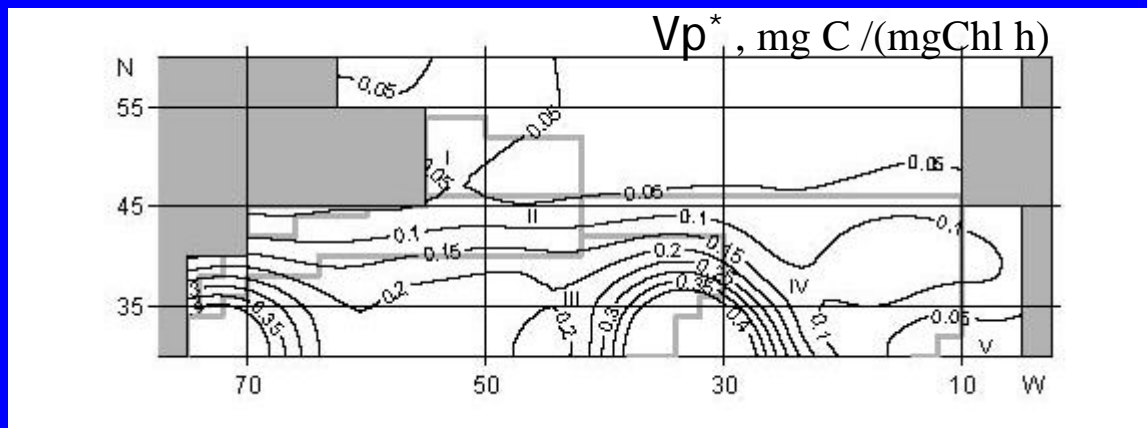
Horizontal distribution of optimized model parameters

(Losa, Kivman and Ryabchenko/Journal of Marine System, 2004)



Kyewalyanga et al., 1998

	I	II	III	IV	V
spring	3.30 +- 2.63	6.01 +- 2.35	6.88 +- 3.30	8.23 +- 2.62	6.64 +- 3.37
autumn	2.24 +- 1.56	4.51 +- 2.09	4.58 +- 2.32	4.43 +- 2.68	4.88 +- 1.28

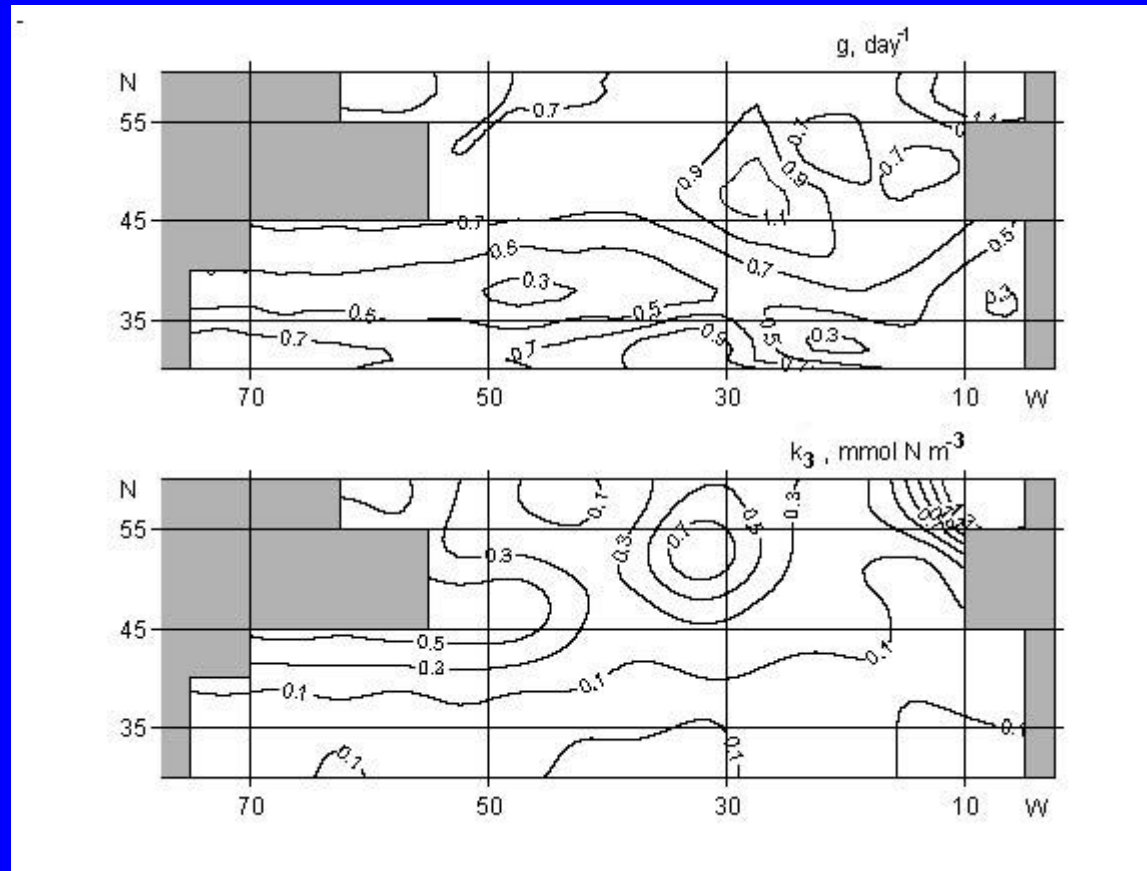


Kyewalyanga et al., 1998

	I	II	III	IV	V
spring	0.073 +- 0.048	0.100 +- 0.045	0.075 +- 0.028	0.078 +- 0.025	0.069 +- 0.032
autumn	0.019 +- 0.007	0.040 +- 0.020	0.037 +- 0.006	0.049 +- 0.037	0.023 +- 0.008

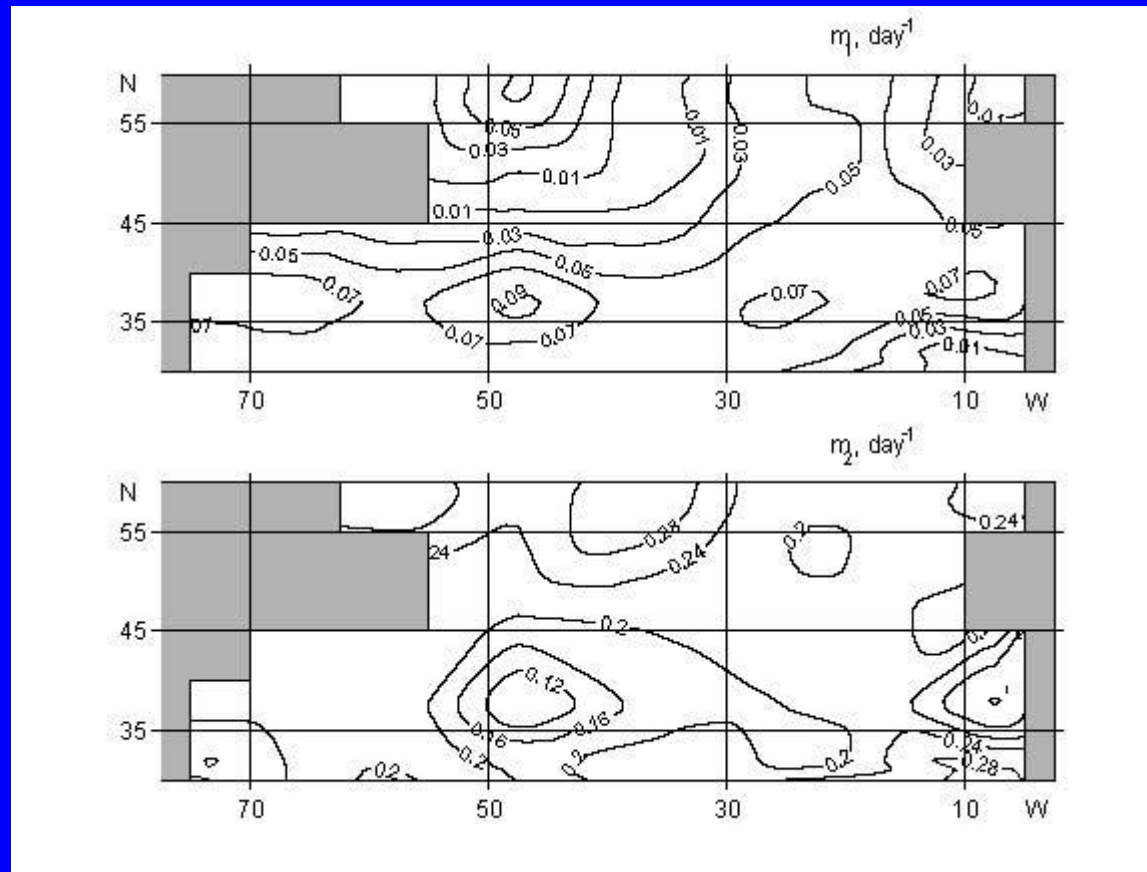
Horizontal distribution of optimized model parameters

(Losa, Kivman and Ryabchenko/Journal of Marine System, 2004)



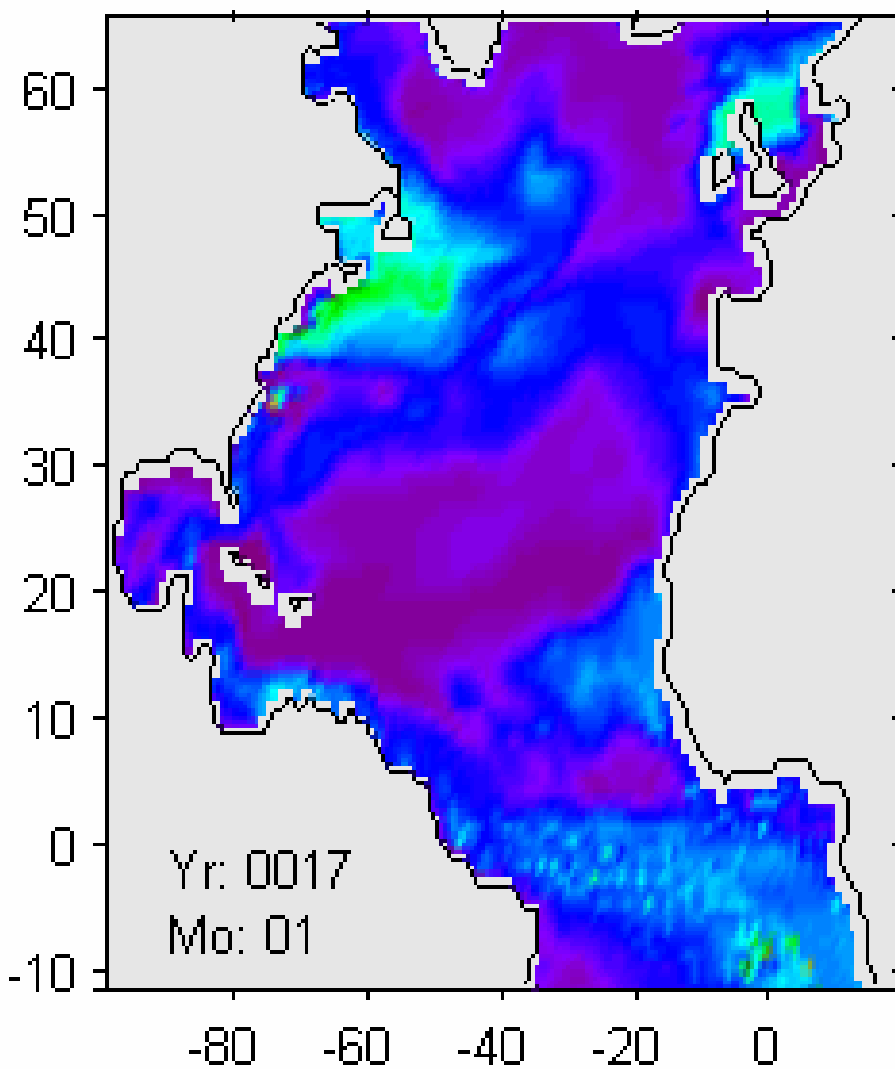
Horizontal distribution of optimized model parameters

(Losa, Kivman and Ryabchenko/Journal of Marine System, 2004)

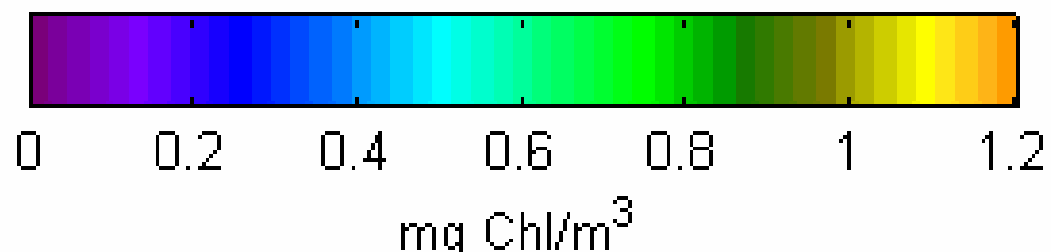
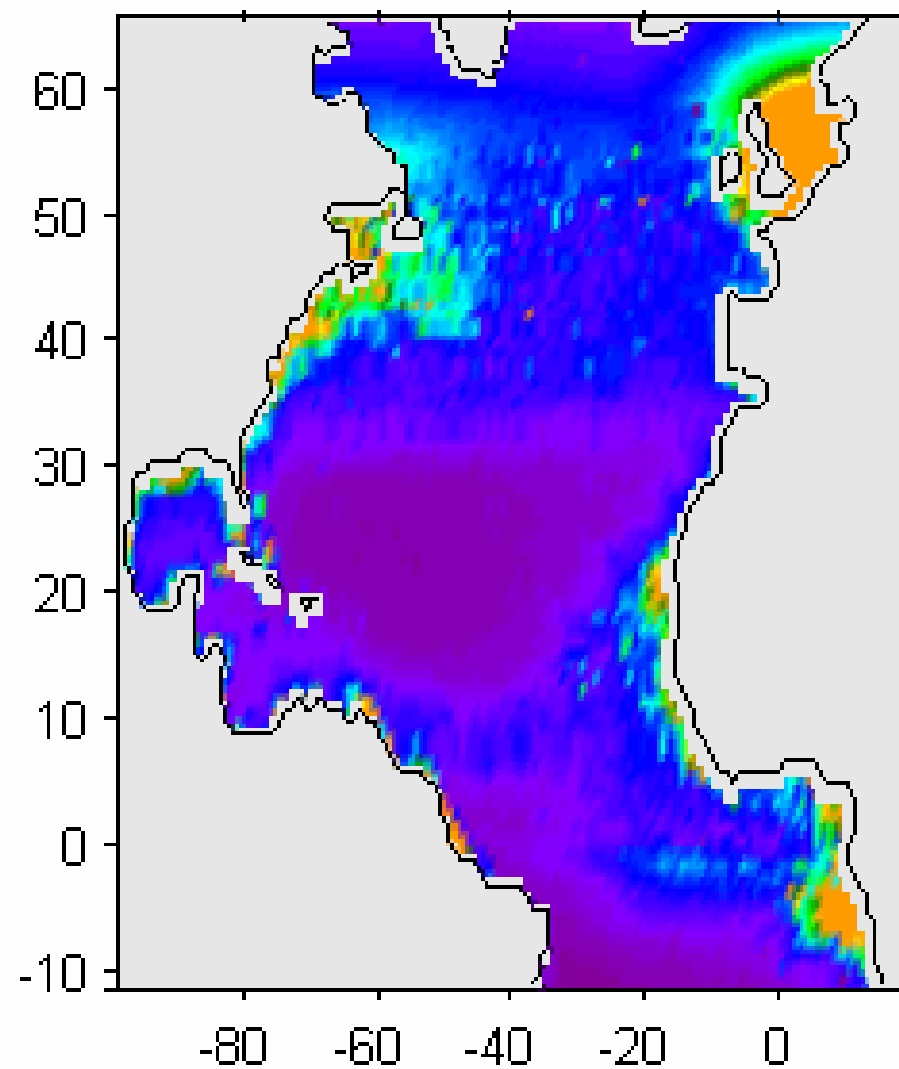


The spatial distribution of the parameters is, obviously, a result of a combined effect of several factors such as solar irradiance, temperature, etc., which may affect latitudinal changes of chemical conditions and plankton species composition. However, it is rather difficult to distinguish which of the physical and biological factors, and in which region, contributes more to the spatial variability of the physiological model parameters.

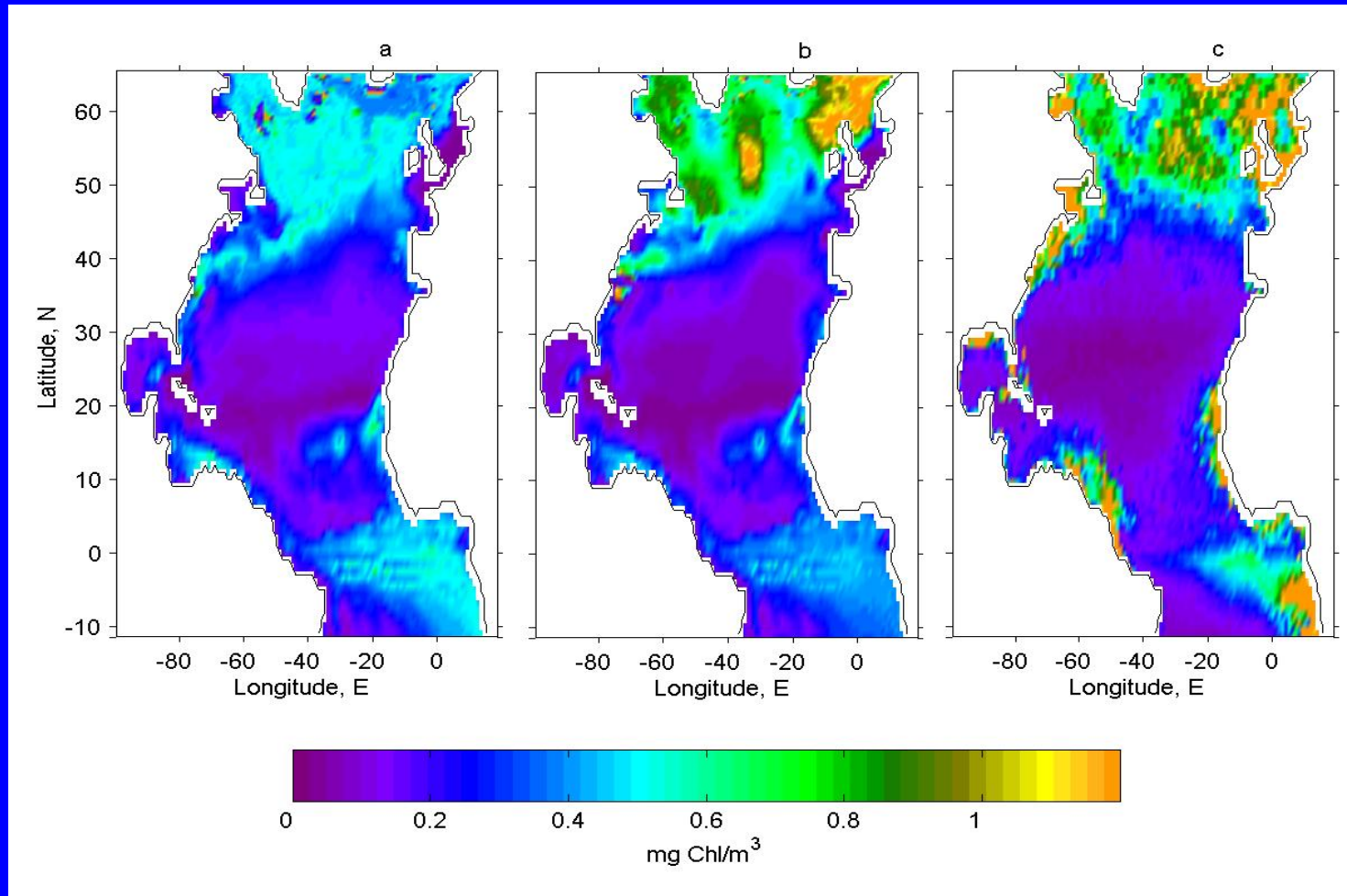
POP_NA_1 Chlorophyll, surface



Data

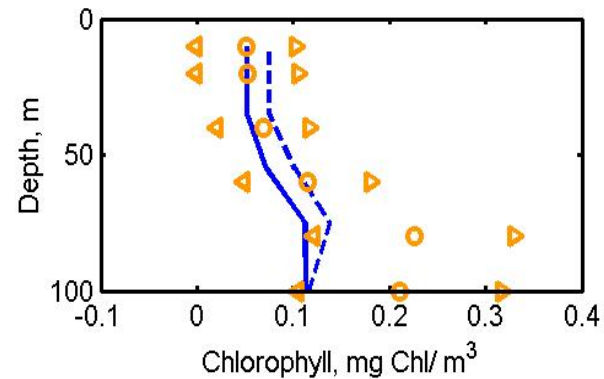
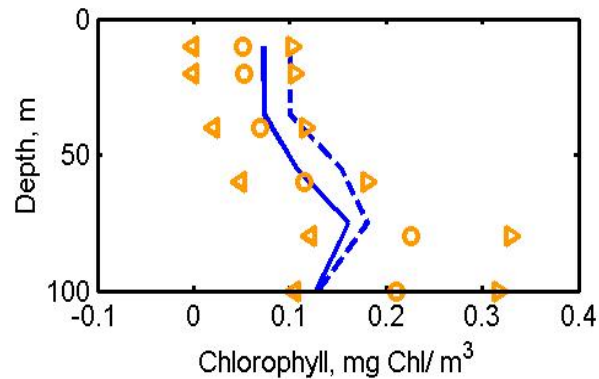
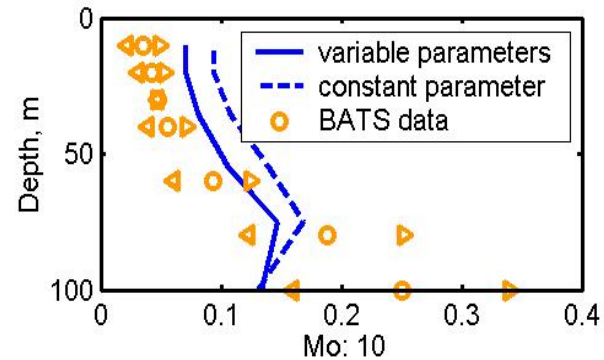
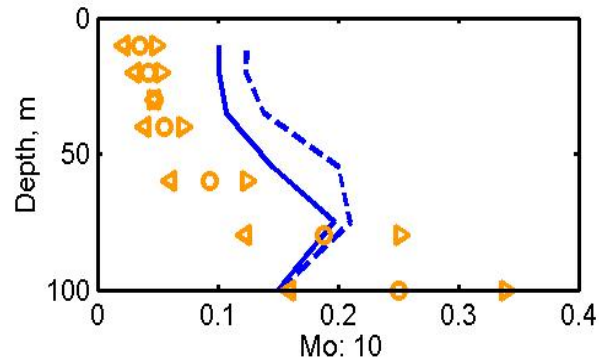
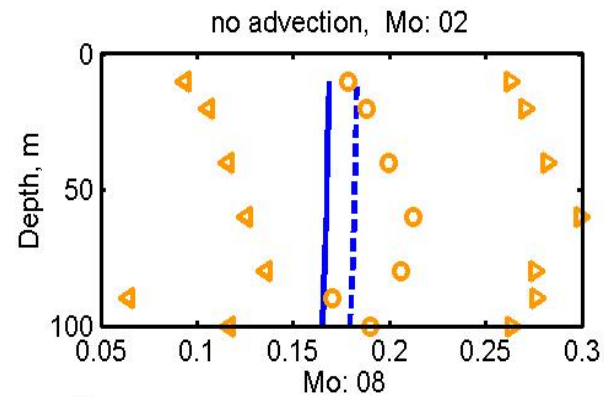
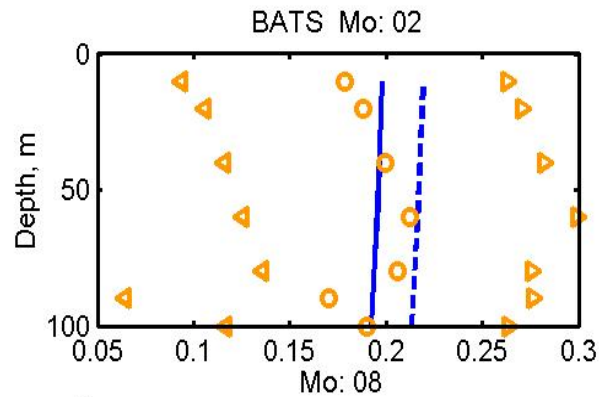


August horizontal distribution of the surface chlorophyll "a" concentration (mgChl m^{-3}) in the North Atlantic



a) the model solution obtained with constant biological parameters; b) the model solution obtained with spatially variable biological parameters and c) SeaWiFS (<http://seawifs.gsfc.nasa.gov/SEAWIFS.html>) data averaged over 1997-2003.

Chlorophyll vertical profiles



Conclusions

Using some of the biological parameters, - previously considered as constants, - spatially variable allows to get a significant improvements in the model-data agreement

- Relationships between physical and biological patterns appears to be different in physically distinct regions.
- Parameterization of the different biological respond to the variability in physics, under different environmental conditions, still remains of a real challenge.
- Correct formulation of data assimilation problem for biology is a powerful tool for investigating mentioned above problem, as well as for forecasting purposes.