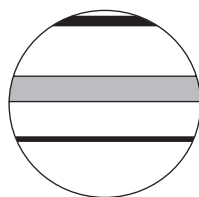


# Late-Holocene glacier growth in Svalbard, documented by subglacial relict vegetation and living soil microbes

Ole Humlum,<sup>1\*</sup> Bo Elberling,<sup>2</sup> Anne Hormes,<sup>3</sup> Kristine Fjordeheim,<sup>4</sup> Odd Harald Hansen<sup>5</sup> and Jan Heinemeier<sup>6</sup>

(<sup>1</sup>Department of Physical Geography, Institute of Geosciences, University of Oslo, Norway, and The University Center in Svalbard (UNIS), Box 156, N-9170 Longyearbyen, Norway; <sup>2</sup>Institute of Geography, University of Copenhagen, DK1350 Copenhagen K., Denmark; <sup>3</sup>Ångströmlaboratory, AMS Laboratory, Uppsala University, SE-75121 Uppsala, Sweden; <sup>4</sup>Department of Geography, University of Bergen, Norway; <sup>5</sup>Norwegian Polar Institute (NP), Tromsø, Norway; <sup>6</sup>AMS 14C Dating Laboratory, Institute of Physics and Astronomy, University of Aarhus, DK8000 Aarhus C, Denmark)

Received 5 January 2004; revised manuscript accepted 19 April 2004



A  
HOLOCENE  
RESEARCH  
PAPER

**Abstract:** Much renewed research interest in Arctic regions stems from the increasing concentration of atmospheric greenhouse gases and the alleged climatic sensitivity of high latitude areas. Glacier and permafrost changes are among a number of proxies used for monitoring past and present Arctic climate change. Here we present observations on frozen *in situ* soil and vegetation, found below cold-based glacier Longyearbreen (78°13'N), 2 km upstream from the present glacier terminus. Dating of the relict vegetation indicates that the glacier has increased in length from about 3 km to its present size of about 5 km during the last *c.* 1100 years. The meteorological setting of non-surging Longyearbreen suggests this example of late-Holocene glacier growth represents a widespread phenomenon in Svalbard and in adjoining Arctic regions. In addition, we use the subglacial permafrozen soil system to evaluate microbial survival capacity over considerable time periods, and we present evidence for microbes having survived more than 1100 years in a subglacial, permafrozen state.

**Key words:** Arctic, Svalbard, glacier variations, climate change, radiocarbon, subglacial vegetation, palaeosol, microbes, late Holocene.

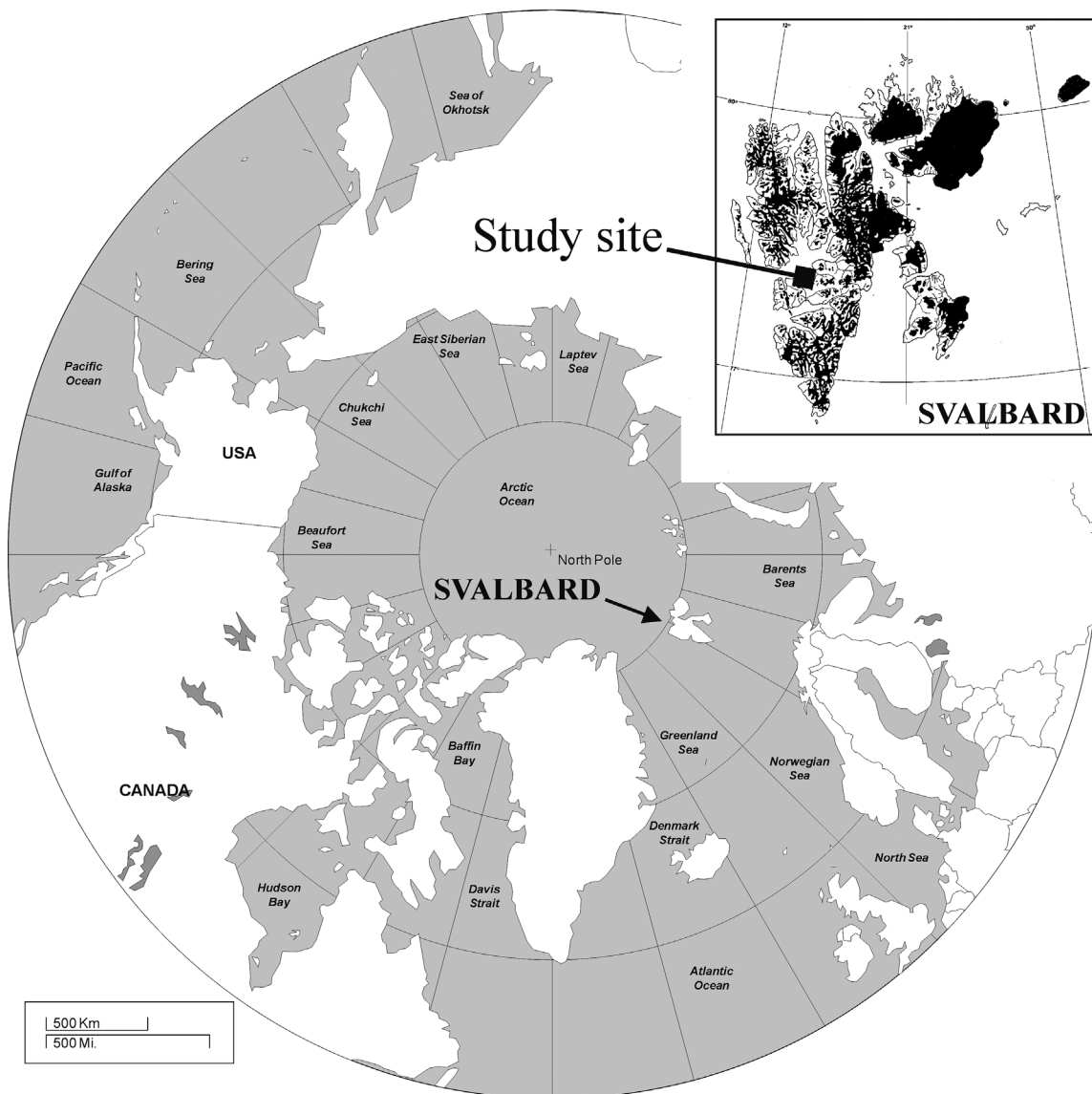
## Introduction

Changes in the Arctic atmosphere–ice–ocean system observed in recent years have sparked intense discussions as to whether these changes represent episodic events or long-term shifts in the Arctic environment. Early twenty-first century concerns about future climate change stem from the increasing concentration of greenhouse gases in the atmosphere, and during the last 15 years the Arctic has gained a prominent role in the scientific debate regarding global climatic change (Houghton *et al.*, 2001). Existing knowledge on Quaternary climate and Global Climate Models (GCMs) predicts that the effect of any present and future global climatic change will be amplified in

the polar regions as a result of feedbacks in which variations in the extent of glaciers, snow, sea ice and permafrost, as well as atmospheric greenhouse gases, play key roles. These are some of the reasons for renewed research interest in Arctic regions. Subcontinental-scale analysis of meteorological data obtained during the instrumental period apparently lends empirical support to the alleged high climatic sensitivity of the Arctic (Giorgi, 2002). Polyakov *et al.* (2002a,b), however, recently presented updated observational trends and variations in Arctic climate and sea-ice cover during the twentieth century, which do not support the modelled polar amplification of surface air-temperature changes observed by surface stations at lower latitudes.

There is reason, therefore, to evaluate climate dynamics and their respective impacts on high-latitude glaciers. Within the

\*Author for correspondence (e-mail: Ole.Humlum@geo.uio.no)



**Figure 1** Map showing the Arctic regions. Insert shows the Svalbard archipelago (63 000 km<sup>2</sup>) with the study site in central Spitsbergen indicated

High Arctic, a unique climatic sensitivity applies to the Archipelago of Svalbard (Figure 1; 77–80°N), located on the boundary between the Norwegian Sea, the Barents Sea and the Arctic Ocean. This was recognized early by Ahlmann (1953) and Lamb (1977). Climatic variations in Svalbard during the twentieth century have been well documented by meteorological data since 1911 (Førland *et al.*, 1997). For example, a marked warming around 1920 changed the mean annual air temperature (MAAT) at sea level within only 5 years from about  $-9.5^{\circ}\text{C}$  to  $-4.0^{\circ}\text{C}$ . This represents the most pronounced increase in MAAT documented anywhere in the world during the instrumental period. Later, from 1957 to 1968, MAAT dropped about  $4^{\circ}\text{C}$ , followed by a more gradual increase towards the end of the twentieth century. In the latest IPCC report (Houghton *et al.*, 2001), attention is drawn specifically to the extraordinarily high Svalbard climatic sensitivity.

The climatic sensitivity of the Svalbard region presumably derives from various forcing mechanisms. First, Svalbard is located near the confluence of ocean currents and air masses that have very different temperature characteristics. The northernmost tip of the North Atlantic Drift presently flows along the west coast of Svalbard, while cold polar water flows south

along the eastern coast. Secondly, the climatic sensitivity is enhanced by rapid variations in the sea-ice extent, which are coupled with both atmospheric and oceanic circulations (Benestad *et al.*, 2002). Finally, Svalbard is located in the major transport pathway of water vapour into the Arctic Basin in association with the North Atlantic cyclone track (Dickson *et al.*, 2000). During the winter season meridional moisture transport along this pathway exhibits a positive relationship with the phase of the North Atlantic oscillation (Jones *et al.*, 2001).

These characteristics make Svalbard a key site for understanding aspects of Northern Hemisphere climatic changes; especially as most predictions of future climate suggest an amplified climatic response in the Arctic. Against this background the dynamics of Svalbard glaciers (Hagen *et al.*, 1993, 2003; Liestøl, 1993; Bruland and Hagen, 2002) represent an important source of Arctic environmental information, past as well as present. Motivated by the importance of estimating the impact of climatic change on High Arctic environments, we present here observations from a fossil soil, with intact plant cover and microbes, found in a subglacial position beneath the glacier Longyearbreen, in order to examine the effects of past climate change on Svalbard.

## Longyearbreen

Glaciers presently cover about 60% of Svalbard (Hagen *et al.*, 1993, 2003; Hagen, 1996). On Spitsbergen, the main island in the Svalbard archipelago (63 000 km<sup>2</sup>), glaciation is especially extensive in areas near the eastern and western coasts, where many glaciers terminate in the sea. In contrast, glaciers in the central part of the island are smaller, mainly because of low precipitation (Humlum, 2002). The Longyearbreen glacier (Figure 2) is located in the relatively dry region of central Spitsbergen, near the main settlement of Longyearbyen. At Longyearbyen airport (45 m a.s.l.) the annual precipitation is about 180 mm (water equivalent), MAAT is about  $-5^{\circ}\text{C}$  and most of Svalbard is situated within the zone of continuous permafrost (Humlum *et al.*, 2003).

Longyearbreen (3.2 km<sup>2</sup>) is about 5 km long and flows from a large cirque at the head of the valley Longyeardalen (Figure 2). The valley is situated in the bioclimatic zone classified as the Inner Fjord Zone (Summerhayes and Elton, 1928; Elvebakk, 1985), the so-called Cassiope-tetragona zone of the mid-Arctic belt (Brattbakk, 1986). This represents a part of Svalbard with floristically rich vegetation, reflecting favourable climatic conditions for plant growth, mainly because of high summer insolation.

Surging glaciers are frequent on Svalbard (Dowdeswell *et al.*, 1991; 1995; Hagen *et al.*, 1993; Jiskoot *et al.*, 2000), especially in the moist coastal regions (Humlum, 2002). There is, however, no evidence for past surge behaviour of Longyearbreen. Owing to the protective debris cover on lower Longyearbreen, a typical feature of many non-surging glaciers in central Spitsbergen, this glacier has not retreated following the twentieth-century warming around 1920. Instead it has thinned 10–30 m over a considerable proportion of its length where a protective layer of supraglacial debris is lacking. It is presumably frozen to the bed except for small temperate areas and the maximum surface velocity is low, 1–3 m/yr (Tonning, 1996; Etzelmüller *et al.*, 2000).

Below the equilibrium line crevasses are narrow and few. Perennial supraglacial meandering meltwater channels erode into the glacier surface each summer. When such channels reach a depth of 8–12 m, ice deformation slowly closes the upper part of the channel. Thus, the channels are gradually transformed into englacial, meandering tunnels. A number of these meltwater conduits have now reached the glacier bed



**Figure 2** Longyearbreen in late June 2000, looking south. The glacier measures about 5 km in total length. The subglacial study site is below the dot on the glacier surface, about 2 km upstream from the debris-covered glacier terminus

20–50 m below the surface, exposing the glacier–bed interface for considerable distances along their course. During the winter, when water discharge has ceased, these tunnels provide a unique means of access to the glacier bed. In Svalbard, glacier deformation is usually low because of low ice temperatures. Therefore, entrances of englacial drainage systems are not completely closed and can be entered in the wintertime using alpine techniques (Vatne, 2001).

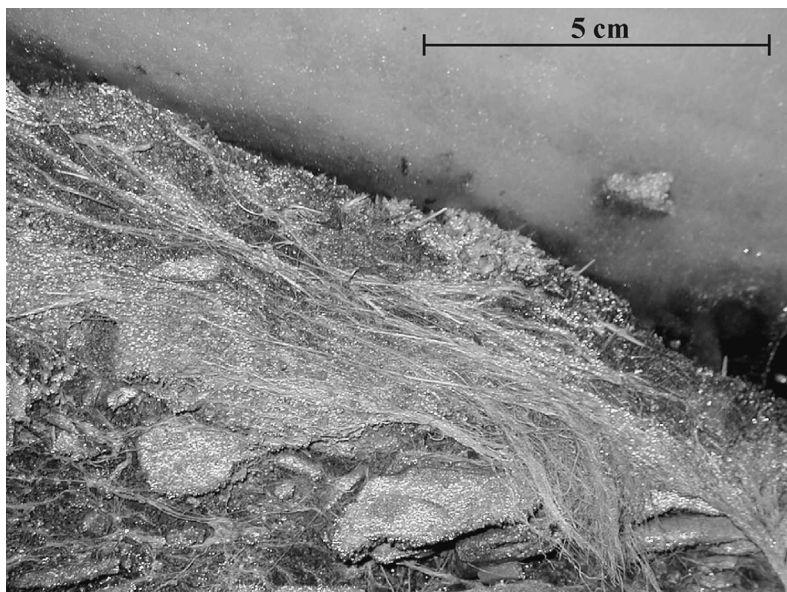
The exposed glacier bed below Longyearbreen generally takes the appearance of a normal talus or scree slope, with no visual indication of glacial erosion. Inspecting the glacier bed in one of the conduits, about 2 km upstream of the present glacier terminus, a well-preserved soil layer with *in situ* vegetation was found at the glacier–bed interface (Figure 3). The vegetation (Figure 4) was undisturbed, even though 30–40 m of active glacier ice presently covers the site. Trimlines above the modern glacier surface indicate that the ice thickness during the Little Ice Age was 20–30 m greater. The lack of evidence for glacial abrasion on boulders and bedrock exposed at the glacier bed led us to conclude that the glacier has remained cold-based at this particular place since it overran the site in the past. This is supported by the visual observation of mosses and other plants extending 1–3 cm up in the basal ice undeformed by glacial movement (Figure 4). The temperature at the glacier bed was measured at about  $-4^{\circ}\text{C}$  (March–May 2001, 2002, 2003).

Study samples were taken from the subglacial soil at several locations 30–35 m below the present-day glacier surface, at 450 m a.s.l. The present-day glacier terminus is at 250 m a.s.l., 2 km further downvalley. Macrofossils were investigated in the laboratory, but only a few plant species were found. This corresponds well with results from similar investigations of macrofossils from other terrestrial sediments in Svalbard (e.g. van der Knaap, 1989). *Salix polaris* (polar willow) is the single dominant species, having a high frequency in all our samples. Smaller parts of *Gramineae*/*Juncaceae* and moss taxa were also identified. The following moss species were identified: *Sanionia uncinata*, which typically grows on patterned ground in glacier forefields distant from any permanent water sources such as ponds and streams; *Tomentypnum nitens*, which is common in association with relatively high vegetation and moderate winter snow cover; and *Distichium* spp. and



**Figure 3** Basal part of Longyearbreen, about 35 m below the present-day glacier surface. The bed consists of a talus sheet, without indication of glacial erosion. An old soil with vegetation is found along the glacier–bed interface. Figure 4 shows the interface close to the left-hand margin of this picture. The lowermost 60–80 cm white ice presumably represents a large snowdrift overrun by the glacier, protecting soil and vegetation





**Figure 4** Close-up of *in situ* vegetation at the glacier–bed interface below Longyearbreen. The section shown measures about 10 cm across

*Pogonatum urnigerum* that typically live in snow-bed communities in topographic depressions. *Bryum pseudotriquetrum* is common along the margins of relatively large streams in the Arctic region. In addition *Myurella julacea* (Figure 5), *Racomitrium ericoides* and *Syntrichia ruralis* were identified, species that are typical of somewhat drier environments than the other bryophyte species mentioned here.

All species found in the subglacial soil below Longyearbreen are known from modern vegetation communities on Svalbard, where they form a widespread element of the present vegetation (e.g., Rønning, 1996). The species identified are all characterized by high adaptability to a range of environmental and climatic conditions in the Arctic. Future investigations of microfossils (pollen and spores) may result in lower taxonomic identification and identification of additional species from these soil samples.

Longyearbreen presumably overran the now-subglacial soil and vegetation during a winter advance without erosive melt-water activity at the glacier terminus. Assuming unchanged prevailing wind conditions, a thick snowdrift probably formed downvalley of the advancing glacier front, just as is the case today along the terminus of Longyearbreen during winter. Such a snow layer may have protected the vegetation to some

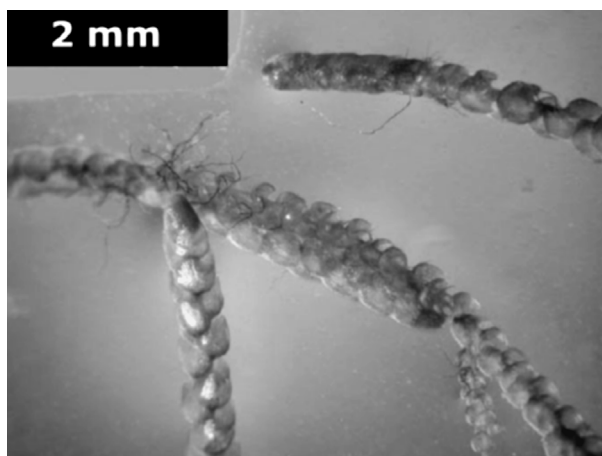
degree during the glacier advance. We speculate that this layer of snow is represented by a white layer of bubbly ice along the glacier–bed interface (Figure 3). Oxygen isotope analysis of ice sampled from this layer yielded  $\delta^{18}\text{O}$  values from  $-11.88$  to  $-12.02$ , which is only slightly higher than modern winter snowpack values (Humlum, unpublished). Modern daily winter air temperatures at the terminus of Longyearbreen typically range from  $-15$  to  $-30^\circ\text{C}$ .

## Radiocarbon dating

### Methods

Frozen samples of soil and vegetation were brought to the nearby laboratory at UNIS (The University Centre in Svalbard) in polyethylene bags. The first radiocarbon dating ( $^{14}\text{C}$ ; AAR-6532, Table 1) of the vegetation exposed at the glacier base yielded a calibrated age of 1700–1410 cal. yr BP. This result, and the unique preservation of the individual plants (Figure 4), encouraged us to investigate probable age variations of the different bryophyte species (mosses) when dated separately. The mosses were not subject to contamination after the glacier advance because the vegetation was perfectly preserved below, and partly in, glacier ice. This is an optimal situation for testing if radiocarbon dates of different species are mutually consistent. Mosses were selected with a pipette under magnifying glasses and binocular microscope in the clean room of the Ångströmlaboratory (University of Uppsala). Risk of contamination for small and wet macrofossil samples increases with long-term storage, as a result of uptake of modern carbon through micro-organisms (Wohlfarth *et al.*, 1998). The macrofossils were therefore cleaned under binocular microscope from fungal mycelia, chemically pre-cleaned, and then identified and photographed for documentation (Figure 5).

All moss species were given acid-alkali-acid pre-treatment consisting of 1% HCl (8–10 h just below boiling point) and 0.5% NaOH (1 h at  $60^\circ\text{C}$ ). The insoluble fraction was washed, acidified to pH 3 and converted to graphite using a Fe-catalyst reaction. This was to ensure removal of humic/fulvic acids. Two sediment samples (Lyr-1 and Lyr-6) were given acid-alkali-acid pre-treatment consisting of 1% HCl and 1% NaOH (in both cases for 8–10 h just below the boiling point). The soluble part was precipitated by adding concentrated HCl and centrifuging at 3000 rpm. The precipitate consisted mainly of



**Figure 5** Microscope view of *Myurella julacea* sampled from the old vegetation layer at the glacier–bed interface below Longyearbreen

**Table 1** Calibrated ages of bryophytes

Lab. No.	Material dated	$^{14}\text{C}$ yr BP $\pm 1\sigma$	$\delta^{13}\text{C}$ ‰	cal. $^{14}\text{C}$ yr BP, $1\sigma$	cal. $^{14}\text{C}$ yr BP, $2\sigma$
Ua-16520	<i>SOL Lyr-6</i>	4090 $\pm$ 70	-26.2	4810–4440	4830–4420
Ua-16380	<i>Tomentypnum nitens</i>	1875 $\pm$ 50	-25.5	1880–1730	1930–1630
Ua-16396	<i>Tomentypnum nitens</i>	1625 $\pm$ 40	-25.7	1570–1410	1690–1410
Ua-16377	<i>Sanionia uncinata</i>	1770 $\pm$ 45	-24.7	1770–1600	1820–1560
Ua-16379	<i>Sanionia uncinata</i>	1515 $\pm$ 40	-26.0	1510–1330	1520–1310
AAR-6532	<i>Moss spp.</i>	1670 $\pm$ 45	-23.4	1690–1520	1700–1410
Ua-16375	<i>Myurella julacea</i>	1750 $\pm$ 70	-25.1	1740–1550	1830–1520
Ua-16382	<i>Syntrichia ruralis</i>	1575 $\pm$ 40	(-25.0)	1515–1415	1550–1350
Ua-16378	<i>Distichium cap.linc.</i>	1540 $\pm$ 40	-22.9	1520–1350	1530–1330
Ua-16652	<i>Racomitrium ericoides</i>	1355 $\pm$ 65	-25.2	1330–1180	1410–1130
Ua-16653	<i>Bryum pseudotriquetrum</i>	1350 $\pm$ 45	-25.7	1310–1180	1340–1170
Ua-16651	<i>Pogonatum urnigerum</i>	1310 $\pm$ 45	-25.5	1290–1180	1310–1140

humic acids and is labelled as SOL (soluble fraction). Before accelerator measurement the dried material (pH 4) was combusted to  $\text{CO}_2$  and converted to graphite. The radiocarbon analyses were determined with the Uppsala EN-tandem accelerator (Possnert, 1990). A small fraction of approximately 0.05 mg carbon of the  $\text{CO}_2$  gas was used for measurement of the natural mass fractionation,  $\delta^{13}\text{C}$ , in a conventional mass spectrometer (VG OPTIMA).

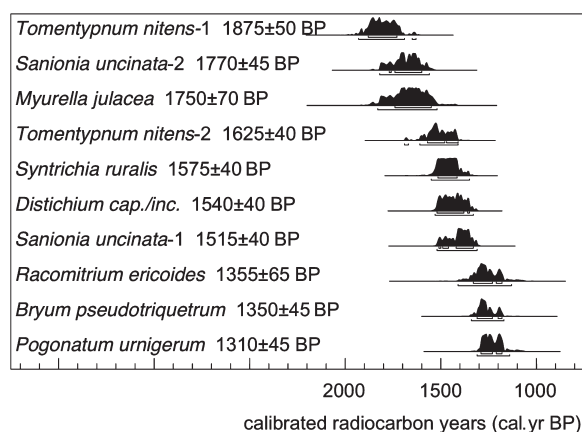
A total of ten bryophyte subsamples and one SOL subsample were analysed from the subglacial samples. Usually, the bryophyte subsamples consisted of about 5–15 individual mosses in order to obtain sufficient material for graphitization. The radiocarbon ages reported in this paper are in radiocarbon years before present, expressed as yr BP. Calibrated ages are given as cal. yr BP and were calculated using the OxCal v.3.8 software based on the INTCAL calibration data set.

## Results and discussion

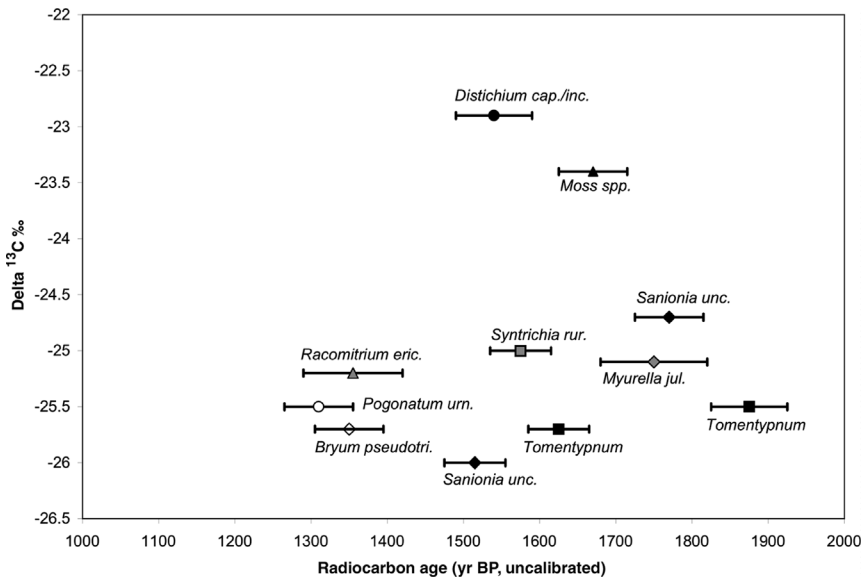
The ten calibrated ages of the bryophytes cover a time window from 1930 to 1130 cal. yr BP (95.4% probability) (Table 1). The ages of the different mosses cover a time window of about 800 years (Figure 6). The results of the calibrated ages show an explicitly continuous decrease in age with no hiatus.

Two additional samples of the bryophyte species *Sanionia uncinata* and *Tomentypnum nitens* were dated to examine the occurrence of species-specific ages. We assume that if species had a biased age, this would be observed by two different results, with one species type forming a cluster. In addition, these ages would differ from the age ranges of the other species. This is, however, not the case, since both moss species tested do not show a species-specific clustering, but distribute over the entire time window dated. In addition, the  $\delta^{13}\text{C}$  values of the moss samples show apparent scattering and point to higher dependency on other parameters than to the species itself (Figure 7). Usually the  $\delta^{13}\text{C}$  values are dependent on the type of plant, because of species-specific fractionation processes. The two *Tomentypnum* mosses show comparable stable isotope compositions, whereas the *Sanionia* mosses indicate varying  $\delta^{13}\text{C}$  values. Different fractionation processes cannot explain the slightly different ages of *Tomentypnum*, whereas the *Sanionia* mosses indicate more complex fractionation process. The most probable explanation is long-term decomposition processes and longevity of the investigated mosses. In earlier studies it has been shown that decomposition processes led to depleted  $\delta^{13}\text{C}$  values (Benner *et al.*, 1987). In addition, the apparently long time window of about 800 cal. yr BP suggests that the studied mosses decomposed over a long period of time. Using the three oldest-dated samples the probability is 95.4% for an initiation of vegetation growth at 1908 cal. yr BP. However, the site might have been covered with vegetation

several hundred years or even several thousand years before this. It is well-known that mosses are organisms with very slow growth rates (Furness and Grime, 1982). The growth rate becomes very slow in Arctic environments because of low temperatures and a low rate of decomposition (Molau, 1997; Sand-Jensen *et al.*, 1999). The mosses that were radiocarbon-dated in this study consist of ramets (physiologically independent individuals produced asexually by clonal growth) – the moss species grows at one end and decays and dies at the other. Therefore, the age of one moss species varies greatly because it consists of different ramets. A consequence of this is that clonal plants such as bryophytes might be much older than non-clonal plants, by approximately one order of magnitude (I.S. Jónsdóttir, personal communication, 2003). Clonal plants growing on Taymyr Peninsula in an Arctic environment have been estimated to have ages in excess of 3000 years (Jónsdóttir *et al.*, 2000). Taking these facts into consideration it cannot be ruled out that the mosses in the glacier forefield of Longyearbreen grew over hundreds or even thousands of years before being covered by the glacier. It is also necessary to take into account the radiocarbon date of the SOL fraction from the palaeosol, with an age of 4830–4420 cal. yr BP; suggesting that the study site might have been ice-free since at least 4830 cal. yr BP. However, it is also well-known that clay minerals bind carbon, which can result in older humic acid ages than given by macrofossil ages of the same samples (McGechin *et al.*, 2001; Scharpenseel and Becker-Heidmann, 1992). Therefore, humic acid ages present serious problems resulting from various unknown sources. We believe that this potential



**Figure 6** Radiocarbon dating results of the mosses from Longyearbreen glacier plotted on the x-axis of calibrated radiocarbon years. The histograms represent the probability distribution of the calibrated age. The calibration and the plot were done with the OxCal v 3.8 software (Bronk Ramsey, 2000) based on the radiocarbon calibration curve of Stuiver *et al.* (1998)



**Figure 7** Stable carbon isotope composition ( $\delta^{13}\text{C} \text{ ‰}$ ) of the moss species plotted on the  $x$ -axis of calibrated radiocarbon years. The age range is given with  $2\sigma$  standard deviations that correspond to a probability of 95.4%. See text for discussion of longevity of moss species, which might explain the long time window of radiocarbon dates better than species-specific fractionation processes

contamination problem exists in this particular region and we are therefore presently not able to conclude that the study site was continuously ice free for the whole period between 4830 and 1104 cal. yr BP. Taking other evidence for Arctic climate development into account (see below), however, this appears very likely.

The period of vegetation growth ended at 1104 cal. yr BP (with a probability of 95.4%), taking into account the three youngest-dated samples (Figure 8). This is a minimum age for the advance of the Longyearbreen glacier over the study site, killing but not destroying the vegetation. Since then the glacier has advanced an additional 2 km downvalley, thereby lowering the altitude of the glacier terminus from about 450 m a.s.l. to 250 m a.s.l. At the time of the advance across the study site the glacier length was about 3 km. The present-day length is about 5 km.

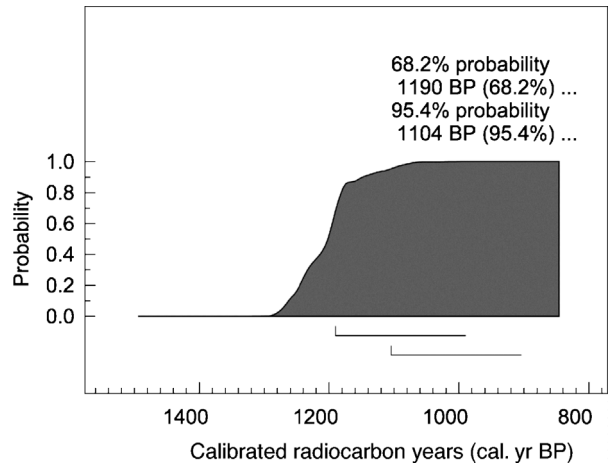
### A climatic perspective on glacier growth

The subglacial sampling site is about 2 km upstream from the present terminus of Longyearbreen. Since the advance at *c.* 1104 cal. yr BP, the glacier probably did not retreat again across the study site. Glacier retreat is a summer phenomenon, and meltwater activity along the glacier front would probably have destroyed the old vegetation and soil layer if it had been exposed by retreat.

Longyearbreen is a typical central Spitsbergen glacier with respect to topographic setting, aspect and size. There is no morphological or structural evidence suggesting past surge behaviour. In addition, based on our findings of subglacial *in situ* vegetation, a surge can be excluded for the last 1104 cal. yr BP; otherwise the mosses would have been destroyed. Most likely, the growth of Longyearbreen therefore represents a normal dynamic response to changes in air temperature, precipitation and changes in prevailing wind and the amount of drifting snow. Wind and snow drift are very important for modern glacier mass balance in the arid central part of Spitsbergen (Humlum, 2002). The late Holocene growth of Longyearbreen probably represents the local expression of a

more widespread trend for many Svalbard glaciers. In order to test this hypothesis and to place our findings into a larger spatio-temporal perspective, a brief review of palaeoclimate in Svalbard and adjoining Arctic regions is given.

Following the early twentieth-century warming mentioned above, most glaciers in Svalbard have experienced a net volume loss (Hagen and Liestøl, 1990; Liestøl 1993; Hagen *et al.*, 1993; Bruland and Hagen, 2002), adjusting to this new meteorological situation. Compared with this well-documented modern behaviour of Svalbard and other Arctic glaciers (see, e.g., Holmlund and Hagen, 1996), comparatively little was known



**Figure 8** Probability plot (68.2% and 95.4%) of the maximum age of glacier Longyearbreen covering the study site. The calculation of the probability of being after all of the three youngest samples is given by:

$$r(t) = \prod_i \int_{r'=-\infty}^{r'=t} p_i(t') dt'$$

This is the distribution (normalized to a maximum of 1) returned by OxCal 3.8. From this a distribution  $r'(t)$  can be calculated which gives a probability distribution for the last of the group of events:

$$r'(t) = dr(t)/dt$$



pre-twentieth century about Holocene glacier and climate dynamics in the High Arctic. Terrestrial micro- and macro-fossils have generally provided rather coarse data from the Svalbard region, and information about climatic change has proved difficult to interpret from observations on vegetation changes during the last 2000 cal. yr BP (e.g., Hyvärinen, 1970; 1972; Birks, 1991; Wohlfarth *et al.*, 1995). From northwest Spitsbergen van der Knaap (1985) demonstrated a change towards lower temperatures during the eighteenth century. From around 200 cal. yr BP a somewhat warmer climate prevailed, before conditions subsequently turned colder again. There is, however, some concern that these results were based partly on data contaminated by human activity (Elvebakk, 1990).

Based on marine data, Salvigsen *et al.* (1992) and Salvigsen (2002) demonstrated warmer conditions in the Svalbard region during the early and mid Holocene, compared with the present-day climate. At that time, most Svalbard glaciers probably were smaller than at present or even absent. Based on lacustrine evidence from western Spitsbergen and a marine core in Billefjorden, Svendsen and Mangerud (1997) also demonstrated a warm early-Holocene climate, followed by a period of renewed glacier growth from 3000 to 2500 cal. yr BP. Furrer (1992, 1994) and Furrer *et al.* (1991) dated fossil organic horizons found beneath end moraines to ages between 1550 and 730 cal. yr BP ( $1010 \pm 80$  yr BP;  $1315 \pm 100$  yr BP;  $1465 \pm 55$  yr BP). These organic horizons were interpreted as maximum ages for glacier advances. They also dated organic horizons between 920 and 500 cal. yr BP ( $710 \pm 60$ ;  $810 \pm 65$  yr BP) 640 and 290 cal. yr BP ( $370 \pm 75$ ;  $485 \pm 50$  yr BP). The fact that these authors used unspecified organic material makes it difficult to estimate the validation of these dates. Contamination problems of bulk sediment samples for radiocarbon dating are well-known and humic acids could account for reasonably younger ages, whereas old carbonates or coal could account for overestimated ages of the above-mentioned samples (Geyh *et al.*, 1971; Hormes *et al.*, 2004). Additional evidence for late-Holocene glacier growth on Svalbard was presented by Snyder *et al.* (2000). All the above findings are based on field evidence from moist coastal west Spitsbergen.

Marine evidence from the Nordic seas near Svalbard documents that the first half of the Holocene was the warmest period during the last 16750–15000 cal. yr BP (Koç *et al.*, 1993), followed by cooling during the late Holocene (Koç and Jansen 1994). In the Barents Sea area just south of Svalbard, the early Holocene warming trend deduced from  $\delta^{18}\text{O}$  records (Duplessy *et al.*, 2001) was followed by rapid cooling during the late Holocene (Ivanova *et al.*, 2002). The cooling was interrupted by at least two periods of warming at 2200 and 1600 cal. yr BP (Sarnthein *et al.*, 2003). Jennings *et al.* (2002), working on the East Greenland Shelf, found evidence for the onset of late-Holocene cooling from *c.* 5500 cal. yr BP, associated with southward expansion of the Arctic sea ice and increased influence of polar water. Taking into account all marine records around Svalbard it has to be kept in mind that the marine reservoir effect and possible variations during the Holocene of coastal ocean streams is very little studied and usually a standard correction of 400 years is used for  $^{14}\text{C}$  dating (Birkenmajer and Olsson, 1998; Feyling-Hanssen and Olsson, 1959–1960).

In Fennoscandia, south of Svalbard, oxygen isotopes of lacustrine carbonates of Lake Tibetanus in Lapland suggest a cooling trend after 3000 cal. yr BP, but interrupted by a period of increased mean July temperatures and decreased annual precipitation, peaking around 1000 cal. yr BP (Hammarlund *et al.*, 2002). Studies of pollen assemblages from northern

Finland indicate a marked late-Holocene summer (July) temperature decline, and suggest the last 2000 years to be the coolest since the early Holocene (Seppä and Birks, 2001). From diatoms, chironomids, pollen and near-infrared spectroscopy at an alpine lake in northern Sweden, Rosén *et al.* (2001) documented a late-Holocene lowering of the tree-limit and gradual lowering of the mean July temperature during the last 7000 cal. yr BP. In southern Norway Blikra and Selvik (1998), mapping snow avalanche deposits, demonstrated that the Holocene was characterized by highly fluctuating winter climatic conditions throughout, but that a development towards deteriorating climate has prevailed for the last 5400 cal. yr BP. In western Norway, Nesje (1992) found that valley and cirque glaciers in the Jostedal region reached their greatest Neoglacial extent during the mid-eighteenth century. Elven (1978) found plant remains previously covered by the Omsbreen glacier in southern central Norway, much as is presently the situation at Longyearbreen. He concluded that Omsbreen most likely was established around 550 cal. yr BP, reached its maximum size (14 km<sup>2</sup>) during the eighteenth century, and underwent significant retreat during the twentieth century. Heikkilä and Seppä (2003) presented a temperature reconstruction based on high-resolution pollen stratigraphy from southern boreal Finland. Their results show that Holocene air temperatures reached their highest values 8–4.5 ka BP, and have gradually decreased by *c.* 1.5°C since, but indicate 0.5°C higher temperatures between 1200 and 1100 cal. yr BP.

In northeast Greenland, only 400 km west of Svalbard, field evidence suggests ice-free fjords during the early and mid-Holocene, followed by extensive periods with ice-covered fjords from 5700 cal. yr BP (Hjort, 1997). Kelly (1980), summarizing available glaciological evidence, concluded that the western margin of the Greenland Ice Sheet retreated to a position 60–120 km behind the present margin during the early Holocene. A late-Holocene period of growth was initiated 3000–3500 cal. yr BP, followed by major advances around 2000 cal. yr BP. This development is also reflected by ice core analysis from the Greenland ice sheet (Dansgaard *et al.*, 1971; 1973). In addition, the establishment and growth of Hans Tausen Ice Cap (now 4208 km<sup>2</sup>) in Pearyland, northernmost Greenland, from 3900 cal. yr BP (Hammer *et al.*, 2001), lend support to this overall late-Holocene climatic development in the Greenland–Svalbard sector of the Arctic. Reconstructed surface temperatures from the Greenlandic Ice Sheet (Dahl-Jensen *et al.*, 1998) directly testify to *c.* 3°C net cooling since 4000 cal. yr BP. Kaplan *et al.* (2002) reported Neoglacial cooling from southeast Greenland from 3000 cal. yr BP, and Fredskild (1973) reports botanical evidence of a sharp change in climate towards colder and drier conditions around 1550 cal. yr BP in west Greenland.

On Nordvestø in the Carey Øer group between Greenland and Ellesmere Island, an extensive deposit of peat developed between approximately 6300 and 4400 cal. yr BP at a site where this type of moss no longer grows (Brassard and Blake, 1978). From Ellesmere Island, Arctic Canada, Blake (1989) reported the observation of a lake basin that has been frozen to the bottom since about 5800 cal. yr BP, while the lake probably was completely open during the preceding warmer early Holocene. In the Canadian Arctic Archipelago, observations indicate that there was an increased frequency of driftwood between 6500 and 4500 cal. yr BP (Blake, 1972; Steward and England, 1983), suggesting diminished Arctic sea ice cover or, alternatively, that the sea ice on which the wood was carried at that time had more mobility, as was suggested from observations in the Svalbard region by Häggblom (1982, 1987).

Thus, the significant net growth of Longyearbreen since 1104 cal. yr BP apparently is consistent with a widespread late-Holocene climatic development towards cooler conditions in the Arctic. This may explain why the Little Ice Age (LIA) glacier advance in Svalbard usually represents the Holocene maximum glacier extension and that little evidence for older Holocene ice-marginal morphology is found. From a glaciological point of view, the climatic sensitivity of glaciers in the central arid regions of Spitsbergen would normally be considered small compared with that of glaciers located in more maritime regions with corresponding higher mass turnover, basal sliding and higher ice-flow velocities. Therefore, we consider that the ~66% increase in length from 3 km to now 5 km, of Longyearbreen during the last *c.* 1100 years is quite remarkable, testifying to a climatic development towards conditions more favourable for glaciers at the gateway to the Arctic Ocean.

## Cold-adapted microbes

In addition to the above analysis, the presence of the fossil soil with *in situ* plants below Longyearbreen provided us with a rare opportunity for evaluating microbial survival capacity of an entire community in a subglacial, permafrozen state within the time frame given by the <sup>14</sup>C-datings of the vegetation.

Temperature is considered one of the most important factors regulating micro-organisms, controlling their physio-chemical reactions (Herbert, 1986). Microbes, which are thought to be the earliest life-forms on this planet, occur in all types of environments including air, water and soil and have adjusted to cold environments, taking up large surface areas of the planet. Indeed, more than 70% of the planet is covered by oceans, of which about two-thirds (by volume) has a temperature of 2°C or less. Because of their ability to adjust to low temperatures, microbes can be regarded as being among the planet's most successful colonizers (Russel, 1990).

Forster (1887) was the first to isolate cold-adapted microbes in dead fish preserved by low temperatures. Since then, such microbes have been found in many types of cold environment and extensive reviews have been presented by Morita (1975), Herbert (1986), Gounot (1986), Russel (1990), Friedmann (1994) and Gilichinsky and Wagner (1995). Among other environments, viable microbes were found in permafrost as early as the early twentieth century by Russian scientists investigating Siberian mammoth localities (Omelyansky, 1911) and in buried soils in the Far East (Isachenko, 1912). In Canada, James and Sutherland (1942) found viable aerobic and anaerobic microbes in permafrost, at depths of 2–3 m at Churchill, Manitoba. Becker and Volkmann (1961) isolated different viable microbes from permafrost cores taken 6–18 m below the terrain surface near Fairbanks, Alaska, having an age of 20 ka BP and 70 ka BP, respectively. In the Antarctic, Cameron and Morelli (1974) in the Dry Valley region found viable microflora from permafrost deposits up to 1 million years of age, which have led to suggestions for addressing exobiological problems (e.g., Mars) by using terrestrial permafrost analogues. Later, Zvyagintsev *et al.* (1985), Gilichinsky *et al.* (1990; 1992) and Khebnikova *et al.* (1990) demonstrated that large numbers of viable microbes (up to 100 million/g of soil) probably have been preserved in a viable state for several millions of years. Upon thawing, these microbes resumed their physiological activities; a remarkable feat considering the low temperature (–12°C) and the probable great age. Apparently, microbes in permafrost regions tend to accumulate at the bottom of the active layer, as the highest number of microbes is

found in the lower part of summer thawing layer in modern tundra soils (Gilichinsky, 1995). Also at the bottom of the previous (7000–9000 cal. yr BP) thicker early Holocene active layer there is a horizon with an increased number of viable microbes in what since has been permafrost (Gilichinsky, 1995).

A fundamental problem in cryobiology is to determine under which environmental conditions microbes can survive long-term freezing (in an inactive state) and how metabolically active microbes may have been during freezing and, in particular, after thawing. This motivated us to investigate if the permafrozen subglacial soil below Longyearbreen contained viable microbes and, if so, how metabolically active (in terms of CO<sub>2</sub> production) such microbes would be following a major change in environmental conditions (thawing).

## Analysis of the subglacial soil

Carbon dioxide (CO<sub>2</sub>) production and its release from soil has long been used as a measure of microbial activity and has been shown to be sensitive to changes in environmental factors such as temperature and moisture (Kirschbaum, 1995; Fang and Moncrieff, 2001). Arctic soils hold large active organic carbon (C) reserves in the active layer as well as inactive reserves in permafrost layers (Post *et al.*, 1982). The release of CO<sub>2</sub> from such soils may therefore exert a potentially positive feedback on atmospheric CO<sub>2</sub> concentrations (e.g., Oechel *et al.*, 1993). This may be enhanced if buried soils become exposed as a result of increased active-layer thickness, thermocast processes or by the retreat of cold-based glaciers. In the laboratory we therefore investigated how incubated soil samples collected from the fossil soil beneath Longyearbreen responded to thawing, with a focus on the microbial production of CO<sub>2</sub> at temperatures between 0 and 7°C. In addition, the results were compared with similar observations from a nearby subaerial reference soil.

Frozen samples (*c.* 500 cm<sup>3</sup>) were collected at two sites in early May 2002. One site was the study site below Longyearbreen as described above, where soil samples were collected after removing the fresh exposed soil that might have been in contact with meltwater the previous summer. Thus, samples used for analysis have been exposed only briefly to the atmosphere as part of the sampling process and have presumably been maintained in a permafrozen state since at least 1104 cal. yr BP. The latter assumption is based on the fact that no evidence of past warm-based conditions at the glacier sole was observed. The control site has been subject to freezing and thawing on an annual basis, as has the now-subglacial soil before the glacier advance. Sampling at the control site was also undertaken in early May 2002, at a time when the soil was still frozen following the winter 2001–2002.

At both study sites (Longyearbreen and Bjørndalen) samples were collected within the upper 3 cm of the soil profile (A-horizon material only) as frozen fragments. Sampling was carried out using sterilized equipment and samples were kept frozen (below –4°C) and stored in darkness until analysed in the laboratory. Soil pH was measured in distilled water at a soil-solution ratio of 1:1. Total organic carbon (TOC) contents were measured using a Total Organic Carbon Analyser (Dohrmann DC-190) after removal of carbonates by a weak acid (HCl). Finally, soil samples were analysed for volume, weight, porosity and solid bulk density.

Basal soil respiration (BSR) measurements were measured in subsamples that had been stored in polyethylene bags at temperatures below –4°C. Prior to measurement, soil samples were split carefully to remove roots and stones and gently mixed. Weighed soil samples (five replicates, each equivalent to



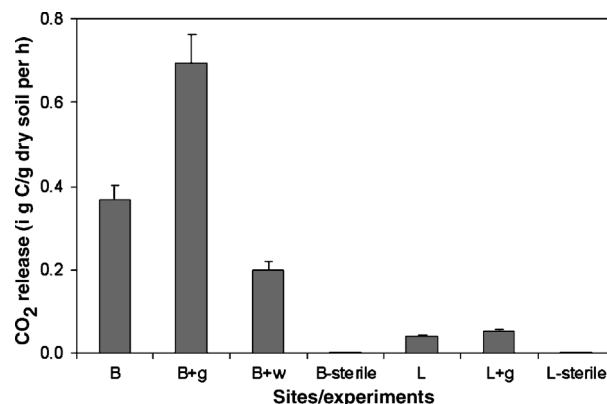
2–3 g dry soil) were transferred to 12 ml Venoject tubes and left for pre-incubation for at least 48 h at stable temperatures equal to the experimental temperatures. Prior to measurement, tubes with soil samples were out-gassed with CO<sub>2</sub>-free synthetic air. BSR measurements in depth-specific soil samples were subsequently taken by monitoring the linear ( $R^2 > 0.95$ ) increase of headspace CO<sub>2</sub> concentrations at 7°C over two to three days by gas chromatography using a Mikrolab ML GC82-12 equipped with a Porapack Q-column kept at 30°C and a TCD detector operated at 200°C (flow rate of 25 ml He/min). The temperature dependence of BSR was investigated by incubating Venoject tubes with soil (three replicates equivalent to 2–3 g dry soil) at 0, 4 and 7±0.3°C. Because of the high water content in soil samples collected below Longyearbreen, additional BSR measurements (measured at 7°C only) were made on samples from Bjørndalen after increasing the water content to the same level as observed for samples taken from the site below Longyearbreen. Sterilized samples were included after killing the microbes by chloroform addition to the soil sample (Elberling *et al.*, 2000). After 2 h the chloroform was removed by vacuum evaporation followed by BSR measurement. Substrate-induced respiration rates (SIR) were made after gently mixing soil material with a powder mixture containing glucose (1.2 mg glucose-C/g soil) and talc (Anderson and Dosch, 1978). Control incubations with empty Venoject tubes showed that CO<sub>2</sub> diffusion into the tubes could be neglected.

### Results of soil analysis

Findings of similar plant remains in all soil samples suggest that both soil study sites have been covered by similar vegetation, mainly mosses. The soil organic carbon content was 3.2±1.5% and 2.7±1.9% by weight for Bjørndalen (B-site) and Longyearbreen (L-site), respectively. Soil pH values were 5–6 for all samples. The water content was 32–33% by weight at the L-site and 20–25% at the B-site.

Measurements revealed that ongoing microbial soil respiration (BSR) was measurable at both sites (Figure 9). CO<sub>2</sub> production rates (per weight dry soil) from soil collected at the L-site were more than ten times the rates observed from sterilized samples and about 10% of rates observed at the present-day B-site. This result strongly suggests that microbial life has survived since the soil was covered by the advancing Longyearbreen no later than 1104 cal. yr BP, and that such soil microbes can again be active after few days at above-freezing temperatures. Respiration rates observed at 0, 4 and 7°C reveal that the temperature sensitivity of CO<sub>2</sub> production can be fitted by an exponential function ( $R^2 = 0.9$ ,  $p < 0.005$ ), indicating a doubling of the rates for every 10°C increase ( $Q_{10} = 2.1$ ). This is consistent with other studies (see review by Fang and Moncrieff, 2001). No significant differences in terms of temperature sensitivity were noted for the two Svalbard sites.

The lower rates observed for the subglacial L-site compared with the modern B-site can be related partly to higher water contents at the L-site (near-full saturation), as indicated by a 44% reduction in rates at the B-site after addition of water (Figure 9). High water content reduces the availability of oxygen and thereby results in reduced soil CO<sub>2</sub> respiration (Fang and Moncrieff, 2001). Taking into account the higher content of organic C in samples from the B-site relative to the L-site further reduces the differences in CO<sub>2</sub> production in terms of CO<sub>2</sub> production per unit soil-C. The CO<sub>2</sub> production increased in all samples after glucose addition. In samples from the modern B-site the production increased by a factor of 1.90 while samples from the subglacial L-site increased by a factor of 1.31, indicating the presence of a living biomass (microbes)



**Figure 9** CO<sub>2</sub> release from buried soil exposed under Longyearbreen (L) and a nearby reference site Bjørndalen (B) as well as after glucose addition (+g), water addition (+w) and after sterilization. All rates are measured at 7°C. One standard deviation ( $n = 5$ ) is shown as a vertical line

at both sites, although reduced at the L-site compared with the B-site. Results also reveal that C-substrate at both sites at least partly limits the observed CO<sub>2</sub> rates.

We conclude that, taking site-specific conditions such as water content into account, the average microbial respiration rate as observed in the 1104 cal. yr BP soil samples (L-site) is roughly equivalent to 20% of rates observed at the present-day B-site. Thus, microbes are not only able to survive for centuries below a cold-based glacier, but they also retain a remarkable capacity to decompose organic matter compared with present-day subaerial microbial communities.

Although the temperature sensitivity of microbial respiration below 0°C is uncertain, in particular the lower limit for activity, more recent studies from Arctic soils in Greenland suggest that  $Q_{10}$  values observed above 0°C to some extent can be extended to below-zero conditions, depending on the availability of free water (Elberling and Brandt, 2003). Applying the temperature sensitivity observed in this study ( $Q_{10} = 2.1$ ) and assuming a rate of consumption of 0.04 µgC/g per h (at 7°C) the microbial respiration since the glacier advance can be calculated if ground temperatures experienced during the period are estimated. Presently the temperature at the glacier bed is about -4°C, and we assume that temperatures may have been somewhat lower during LIA cold periods, even though variations in glacier thickness and dynamics also represent important controls on the subglacial temperature regime. The lack of glacial abrasion at the glacier bed, however, suggests that the glacier has remained non-sliding and cold-based at the study site.

A simple mass balance calculation assuming a low average temperature of about -8°C since the site was covered by the advancing glacier, suggests a carbon loss equal to 0.19 g C/g soil, using 1100 years as an approximate time period. This is more than the expected original carbon content in the soil before the glacier advance (0.03–0.05 g/g soil). This discrepancy suggests that the microbes recovered from below Longyearbreen may have been periodically subject to temperatures below the limit for activity, at least for part of the period, but that they still were able to survive until now. Unfortunately, given the present limited state of knowledge on microbial respiration at sub-zero temperatures, our data do not allow us to differentiate between uncertainties related to the actual temperature regime experienced at the subglacial study site and uncertainties resulting from microbial activity at temperatures below 0°C.

## Conclusions

- In High Arctic Svalbard, a subglacial exposure of undisturbed palaeosol and vegetation has been found below cold-based glacier Longyearbreen. Dating demonstrates that the study site was covered by the advancing glacier no later than *c.* 1104 cal. yr BP. Before that, the site was ice-free for at least 800 years and possibly much longer.
- Cross-checking the radiocarbon dating of different moss species sampled at the glacier–bed interface showed that no species-specific ages occur and therefore, different fractionation processes can be excluded. The radiocarbon ages range over a long time window of about 800 years and point to the slow growth, clonal character and decreased decomposition of the mosses.
- Measurements revealed that microbial life has survived in a metabolically active state in the permafrozen, subglacial soil since *c.* 1104 cal. yr BP.
- Soil microbes are not only able to survive for centuries below a glacier in permafrozen state but they are also able to maintain a remarkable capacity to decompose organic matter compared with present-day microbial communities, following only few days at above-freezing temperatures.

## Acknowledgements

The authors acknowledge logistic and laboratory support provided by UNIS (The University Center in Svalbard), enabling us to carry out the work below Longyearbreen. Funding from the Danish Natural Science Research Council (no. 21-03-0452; Bo Elberling) is also acknowledged. Lars Hedenäs, Swedish Museum of Natural History, Stockholm, is acknowledged for the identification of the moss species. Valuable information about the longevity of mosses was provided by Ingibjörg Jónsdóttir, the University Center in Svalbard. The  $^{14}\text{C}$  dating was done at the Institute for Physics and Astronomy, University of Aarhus, Denmark, and at the Ångströmlaboratory, University of Uppsala, Sweden. Anne Hormes acknowledges Göran Possnert for greatly supporting this work and the European Community programme ‘Improving Human Research Potential and the Socio-economic Knowledge Base’ for funding her Marie Curie fellowship (HPMF-CT-2000-01040). The isotope laboratory at the Department of Geophysics (Niels Bohr Institute, University of Copenhagen) carried out the  $\delta^{18}\text{O}$  analyses. The manuscript benefited from careful reviews by Richard Telford and an anonymous reviewer.

## References

Ahlmann, H.W. 1953: *Glacier variations and climatic fluctuations*. New York: American Geographical Society, Bowman memorial lectures, 51 pp.

Anderson, J.P.E. and Dosch, K.H. 1978: A physiological method for the quantitative measurements of microbial biomass in soils. *Soil Biology & Biochemistry* 10, 215–21.

Becker, R.E. and Volkmann, C.M. 1961: A preliminary report on the bacteriology of permafrost in the Fairbanks area. *Proceedings of the Alaskan Scientific Conference* 12, 188.

Benestad, R.E., Hanssen-Bauer, I., Skaugen, T.E. and Førland, E.J. 2002: *Associations between sea-ice and the local climate on Svalbard*. Oslo: Norwegian Meteorological Institute Report No. 07/02, 1–7.

Benner, R., Fogel, M.L., Sprague, E.K. and Hodson, R.E. 1987: Depletion of  $^{13}\text{C}$  in lignin and its implications for stable carbon isotope studies. *Nature* 329, 708–10.

Birkenmajer, K. and Olsson, I.U. 1998: Radiocarbon dating of whale bones from the 17th century whaling sites at Gåshamna, Hornsund, south Spitsbergen. *Bulletin of the Polish Academy of Sciences, Earth Sciences* 46, 109–32.

Birks, H.H. 1991: Holocene vegetational history and climatic change in west Spitsbergen—plant macrofossils from Skardtjønnen, an Arctic lake. *The Holocene* 1, 211–18.

Blake, W., Jr 1972: Climatic implications of radiocarbon-dated driftwood in the Queen Elizabeth Islands, Arctic Canada. In Vasari, Y., Hyvärinen, H. and Hicks, S. editors, *Climatic changes in the Arctic areas during the last tenthousand years*. Proceedings of a symposium held in Oulanka-Kevo, Finland, 1971. *Acta Universitatis Ouluensis Series A, Scientiae Rerum Naturalium* No. 3, Geologica No. 1, 77–104.

— 1989: Inferences concerning climatic change from a deeply frozen lake on Rundfjeld, Ellesmere Island, Arctic Canada. *Journal of Paleolimnology* 2, 41–54.

Blikra, L.H. and Selvik, S.F. 1998: Climate signals recorded in snow avalanche-dominated colluvium in western Norway: depositional facies successions and pollen records. *The Holocene* 8, 631–58.

Brassard, G.R. and Blake, W., Jr 1978: An extensive subfossil deposit of the arctic moss *Aplodon wormskioldii*. *Canadian Journal of Botany* 56, 1852–59.

Brattbakk, I. 1986: Vegetasjonsregioner—Svalbard og Jan Mayen. *Nasjonalatlas for Norge kartblad* 4.1.3. Hoenefoss: Statens Kartverk.

Bronk Ramsey, C. 2000: Development of the Radiocarbon Calibration Program. *Radiocarbon* 43, 355–63.

Brunland, O. and Hagen, J.O. 2002: Glacial mass balance of Austre Broggerbreen (Spitsbergen), 1971–1999, modelled with a precipitation-run-off model. *Polar Research* 21, 109–21.

Cameron, R.E. and Morelli, F.A. 1974: Viable microorganisms from ancient Ross Island and Taylor Valley drill core. *Antarctic Journal of the US* 9, 113–16.

Dahl-Jensen, D., Mosegaard, K., Gundestrup, N., Clow, G.D., Johnsen, S.J., Hansen, A.W. and Balling, N. 1998: Past temperatures directly from the Greenland Ice Sheet. *Science* 282, 268–71.

Dansgaard, W., Johnsen, S.J., Clausen, H.B. and Langway, C.C., Jr 1971: Climatic record revealed by the Camp Century ice core. In Turekian, K.K., editor, *The Late Cenozoic glacial ages*. New Haven CT: Yale University Press, 37–56.

Dansgaard, W., Johnsen, S.J., Clausen, S.J. and Gundestrup, N. 1973: Stable isotope glaciology. *Meddelelser om Grønland* 197, 1–53.

Dickson, R.R., Osborn, T.J., Hurrell, J.W., Meincke, J., Blindheim, J., Adlandsvik, B., Vinje, T., Alekseev, G., Maslowski, W. and Cattle, H. 2000: The Arctic Ocean response to the North Atlantic Oscillation. *Journal of Climate* 15, 2671–96.

Dowdeswell, J.A., Hamilton, G.S. and Hagen, J.O. 1991: The duration of the active phase on surge-type glaciers: contrasts between Svalbard and other regions. *Journal of Glaciology* 37, 388–400.

Dowdeswell, J.A., Hodgkins, R., Nuttall, A.-M., Hagen, J.O. and Hamilton, G.S. 1995: Mass balance change as a control on the frequency and occurrence of glacier surges in Svalbard, Norwegian High Arctic. *Geophysical Research Letters* 22, 2909–12.

Duplessy, J.C., Ivanova, E.V., Muddmaa, I.O., Paterne, M. and Labeyrie, L. 2001: Holocene paleoceanography of the Northern Barents Sea and variations of the northward heat transport by the Atlantic Ocean. *Boreas* 30, 2–16.

Elberling, B. and Brandt, K.K. 2003: Uncoupling of microbial  $\text{CO}_2$  production and  $\text{CO}_2$  release in frozen soil and its implications for field studies of arctic C cycling. *Soil Biology and Biochemistry* 35, 263–72.

Elberling, B., Schippers, A. and Sand, W. 2000: Bacterial and chemical oxidation of pyritic mine tailings at low temperatures. *Journal of Contaminant Hydrology* 41, 225–38.

- Elvebakk, A.** 1985: Higher phytosociological syntaxa on Svalbard and their use in subdivision of the Arctic. *Nordic Journal of Botany* 5, 273–84.
- 1990: Verknader av klimaendringer på terrestrisk flora og vegetasjon. Kapittel 6. In Kverndal, A.-I., Elvebakk, A., Jaworowski, Z. and Hansson, R., editors, *Virkninger av klimaendringer i polarområdene. Bidrag til den interdepartementale klimautredning*. Oslo: Norsk Polarinstitutt Rapportserie no. 62, Chapter 6.
- Elven, R.** 1978. Subglacial plant remains from the Omsbreen glacier area, south Norway. *Boreas* 7, 83–89.
- Etzelmüller, B., Ødegård, R.S., Vatne, G., Mysterud, R.S., Tønning, T. and Sollid, J.L.** 2000: Glacier characteristic and sediment transfer systems of Longyearbreen and Larsbreen, western Spitsbergen. *Norsk Geografisk Tidsskrift* 54, 157–68.
- Fang, C. and Moncrieff, J.B.** 2001: The dependence of soil CO<sub>2</sub> efflux on temperature. *Soil Biology & Biochemistry* 33, 155–65.
- Feyling-Hanssen, R.W. and Olsson I.U.** 1959–1960: Five radiocarbon datings of Post Glacial shorelines in Central Spitsbergen. *Norsk Geografisk Tidsskrift*, 17, 122–31.
- Førland, E.J., Hanssen-Bauer, I. and Nordli, P.Ø.** 1997: *Climate statistics and longterm series of temperature and precipitation at Svalbard and Jan Mayen*. Oslo: Det Norske Meteorologiske Institutt, Report No. 21/97 klima, 72 pp.
- Forster, J.** 1887: Über einige Eigenschaften leuchtender Bakterien. *Zentralblatt für Bakteriologie Parasitenkunde und Infektionskrankheiten und Hygiene* 2, 337–40.
- Fredskild, B.** 1973: Palaeobotanical investigations of some peat deposits of Norse age at Qagssiarssuk, South Greenland. *Meddelelser om Grønland* 204, 1–41.
- Friedmann, E.I.** 1994: Permafrost as microbial habit. In Gilichinsky, O.A., editor, *Viable microorganisms in permafrost*. Pushino: Russian Academy of Sciences, 21–26.
- Furness, S.B. and Grime, O.** 1982: Growth rate and temperature response in bryophytes. *Journal of Ecology* 70, 525–36.
- Furrer, G.** 1992: Zur Gletschergeschichte des Liefdefjords. *Stuttgarter Geographische Studien* 117, 267–78.
- 1994: Zur Gletschergeschichte des Liefdefjords/NW-Spizbergen. *Zeitschrift für Geomorphologie, Neue Folge*, Supplement-Band 97, 43–47.
- Furrer, G., Stapfer, A. and Glaser, U.** 1991. Zurnacheiszeitlichen Gletschergeschichte des Liefdefjords (Spitzbergen) (Ergebnisse der Geowissenschaftlichen Spizbergenexpedition 1990). *Geographica Helvetica* 1991, 147–55.
- Geyh, M.A., Benzler, J.H. and Roeschmann, G.** 1971: Problems of dating Pleistocene and Holocene soils by radiometric methods. In Yaalon, D.H., editor, *Nature, origin and dating of palaeosols*. Jerusalem: Israel University Press, 63–75.
- Gilichinsky, D.A. and Wagner, S.** 1995: Microbial life in permafrost. *Permafrost and Periglacial Processes* 5, 143–50.
- Gilichinsky, D.A., Khlebnikova, G.M., Zvyagintsev, D.G., Fedorov-Davydon, D.G. and Kudryavtseva, N.N.** 1990: Microbiological characteristic by studying of sedimentary deposits of cryolithozone. *Isv. AN SSSR, Ser. Geol.* 6, 103–15 (in Russian).
- Gilichinsky, D.A., Vorobyova, E.A., Erokhina, L.G., Fyodorov-Davydov, D.G. and Chaikovskaya, N.R.** 1992: Long-term preservation of microbial ecosystems in permafrost. *Advances in Space Research* 12, 225–63.
- Giorgi, F.** 2002: Variability and trends of sub-continental scale surface climate in the twentieth century. Part I: observations. *Climate Dynamics* 18, 675–91.
- Gounot, A.M.** 1986: Psychrophilic and psychrotrophic microorganisms. *Experientia* 42, 1192–97.
- Hagen, J.O.** 1996: Svalbard. In Jania, J. and Hagen, J.O., editors, *Mass balance of Arctic glaciers*. International Arctic Science Committee (IASC), Working Group on Arctic Glaciology, Report No. 5, University of Silesia, Sosnowiec, Oslo, 30–38.
- Hagen, J.O. and Liestøl, O.** 1990: Long-term glacier mass-balance investigations in Svalbard, 1950–88. *Annals of Glaciology* 14, 102–106.
- Hagen, J.O., Liestøl, O., Roland, E. and Jørgensen, T.** 1993: *Glacier atlas of Svalbard and Jan Mayen*. Oslo: Norwegian Polar Institute, Meddelelser No. 129, 141 pp. and 17 maps.
- Hagen, J.O., Melvold, K., Pinglot, F. and Dowdeswell, J.** 2003: On the net mass balance of the glaciers and ice caps in Svalbard, Norwegian Arctic. *Arctic, Antarctic, and Alpine Research* 35, 264–70.
- Hägglöf, B.** 1982: Driftwood in Svalbard as an indicator of sea ice conditions. *Geografiska Annaler* 64A, 81–94.
- 1987: Drivved och havsis. In Hoppe, G., Björn-Rasmussen, S. and Wiberg Roland, M. editors, *Expeditionen Ymer-80—en slutrapport*. Stockholm: Polarforskningskommittén, Kungl. Vetenskapsakad., 127–33.
- Hammarlund, D., Barnekow, L., Birks, H.J.B., Burchard, B. and Edwards, T.W.D.** 2002: Holocene changes in atmospheric circulation recorded in the oxygen-isotope stratigraphy of lacustrine carbonates from northern Sweden. *The Holocene* 12, 339–51.
- Hammer, C.U., Johnsen, S.J., Clausen, H.B., Dahl-Jensen, D., Gundestrup, N. and Steffensen, J.P.** 2001: The paleoclimatic record from a 345 m long ice core from the Hans Tausen Iskappe. Copenhagen, Danish Polar Center. *Meddelelser om Grønland Geoscience* 39, 87–95.
- Heikkilä, M. and Seppä, H.** 2003: A 11 000 yr palaeotemperature reconstruction from the southern boreal zone in Finland. *Quaternary Science Reviews* 22, 541–54.
- Herbert, R.A.** 1986: The ecology and physiology of psychrophilic microorganisms. In Herbert, R.A. and Codd, G.A., editors, *Microbes in extreme environments*. New York: SGM Academic Press, 1–23.
- Hjort, C.** 1997: Glaciation, climate history, changing marine levels and the evolution of the Northeast Water Polynia. *Journal of Marine Systems* 10, 23–33.
- Holmlund, P. and Hagen, J.O.** 1996: Northern Scandinavia. In Jania, J. and Hagen, J.O., editors, *Mass balance of Arctic glaciers*. International Arctic Science Committee (IASC), Working Group on Arctic Glaciology, Report No. 5, University of Silesia, Sosnowiec, Oslo, 39–43.
- Hormes, A., Karlén, W. and Possnert, G.** 2004: Radiocarbon dating of palaeosol components in moraines in Lapland, northern Sweden. *Quaternary Science Reviews* 23, 2031–43.
- Houghton, J.T., Ding, Y., Griggs, D.J., Nogués, M., van der Linden, P.J., Dai, X., Maskell, K. and Johnson, C.A.** 2001: *Climate change 2001: the scientific basis*. Contribution of Working Group I to the Third Assessment Report of the Intergovernmental Panel on Climate Change. Cambridge: Cambridge University Press, 881 pp.
- Humlum, O.** 2002: Modelling late 20th century precipitation in Nordenskiöld Land, central Spitsbergen, Svalbard, by geomorphic means. *Norwegian Geographical Journal* 56, 96–103.
- Humlum, O., Instanes, A. and Sollid, J.L.** 2003: Permafrost in Svalbard; a review of research history, climatic background and engineering challenges. *Polar Research* 22, 191–215.
- Hyvärinen, H.** 1970: Flandrian pollen diagrams from Svalbard. *Geografiska Annaler* 52A, 213–22.
- 1972: Pollen-analytical evidence for Flandrian climatic change in Svalbard. In Vasari, Y., Hyvärinen, H. and Hicks, S., editors, *Climatic changes in arctic areas during the last ten-thousand years*. Stockholm: Acta Universitatis Ouluensis, Series A, Scientiae Rerum Naturalium No. 3, Geologica No. 1, 225–37.
- Isachenko, B.L.** 1912: Some data on permafrost bacteria. *Izvestiya Sankt-Peterburgskogo Botanich-eskogo sada* 12, 140 (in Russian).
- Ivanova, E.V., Murdmaa, I.O., Duplessy, J.-C. and Paterne, M.** 2002: Late Weichselian to Holocene paleoenvironments in the Barents Sea. *Global and Planetary Change* 34, 209–18.
- James, N. and Sutherland, M.L.** 1942: Are there living bacteria in permafrozen subsoil? *Canadian Journal of Research, Section C* 20, 228–35.
- Jennings, A.E., Knudsen, K.L., Hald, M., Hansen, C.V. and Andrews, J.T.** 2002: A mid-Holocene shift in Arctic sea-ice variability on the East Greenland Shelf. *The Holocene* 12, 49–58.
- Jiskoot, H., Murray, T. and Boyle, P.** 2000: Controls on the distribution of surge-type glaciers in Svalbard. *Journal of Glaciology* 46, 412–22.
- Jones, P.D., Osborn, T.J. and Briffa, K.R.** 2001: The evolution of climate over the last millennium. *Science* 292, 662–67.



- Jónsdóttir, I.S., Augner, M., Fagerström, T., Persson, H. and Stenström, A. 2000: Genet age in marginal populations of two clonal *Carex species* in the Siberian Arctic. *Ecography* 43, 402–12.
- Kaplan, M.R., Wolfe, A. and Miller, G.H. 2002: Holocene environmental variability in southern Greenland inferred from lake sediments. *Quaternary Research* 58, 149–59.
- Kelly, M. 1980: *The status of the Neoglacial in western Greenland*. Copenhagen: The Geological Survey of Greenland, Report No. 96, 24 pp.
- Khlebnikova, G.M., Gilichinsky, D.A., Fedorov-Davydov, D.G. and Vorobyova, E.A. 1990: Quantitative evaluation of microorganisms in permafrost deposits and in buried soils. *Microbiologia* 59, 148–55 (in Russian).
- Kirschbaum, M.U.F. 1995: The temperature dependence of soil organic matter decomposition, and the effect of global warming on soil organic C storage. *Soil Biology & Biochemistry* 27, 753–60.
- Koç, N. and Jansen, J. 1994: Response of the high-latitude Northern Hemisphere to orbital climate forcing: evidence from the Nordic Seas. *Geology* 22, 523–26.
- Koç, N., Jansen, E. and Haffidason, H. 1993: Paleooceanographic reconstructions of surface ocean conditions in the Greenland, Iceland and Norwegian seas through the last 14ka based on diatoms. *Quaternary Science Reviews* 12, 115–40.
- Lamb, H.H. 1977: *Climate: present, past and future. Volume 2. Climatic history and the future*. London: Methuen, 835 pp.
- Liestøl, O. 1993: Glaciers of Europe – Glaciers of Svalbard, Norway. In Williams, R.S. and Ferrigno, J.G., editors, *Glaciers of Europe. Satellite image atlas of glaciers of the world*. U.S. Geological Survey Professional Paper 1386-E, 164 pp.
- McGechin, J., Burr, G.S., Jull, A.J.T., Reiner, D., Gosse, J., Davis, P.T., Mulis, D. and Southon, J.R. 2001: Stepped combustion <sup>14</sup>C dating of sediment: a comparison with established techniques. *Radiocarbon* 43, 255–61.
- Molau, U. 1997: Age related growth and reproduction in *Diapensia lapponia*, an arctic-alpine cushion plant. *Nordic Journal of Botany* 17, 225–34.
- Morita, R.Y. 1975: Psychrophilic bacteria. *Bacteriological Review* 39, 144–67.
- Nesje, A. 1992: Younger Dryas and Holocene glacier fluctuations and equilibrium-line altitude variations in the Jostedal region, western Norway. *Climate Dynamics* 63, 221–27.
- Oechel, W.C., Hastings, S.J., Vourlitis, G.L., Jenkins, M., Riechers, G. and Grulke, N. 1993: Recent change of Arctic tundra ecosystems from a net carbon dioxide sink to a source. *Nature* 361, 520–23.
- Omelyansky, V.L. 1911: Bacteriological examination of Sanga-Yuryakh mammoth and nearby soil. *Arkiv biologicheskikh nauk* 16, 335 (in Russian).
- Polyakov, I., Akasofu, S.-I., Bhatt, U., Colony, R., Ikeda, M., Makshtas, A., Swingley, C., Walsh, D. and Walsh, J. 2002a: Trends and variations in Arctic climate systems. *Transactions, American Geophysical Union (EOS)* 83, 547–48.
- Polyakov, I.V., Alekseev, G.V., Bekryaev, R.V., Bhatt, U., Colony, R.L., Johnson, M.A., Karklin, V.P., Makshtas, A.P., Walsh, D. and Yulin, A.V. 2002b: Observationally based assessment of polar amplification of global warming. *Geophysical Research Letters* 29, 1878, 25-1–25-4.
- Possnert, G. 1990: Radiocarbon dating by the accelerator technique. *Norwegian Archaeological Review* 23, 662–75.
- Post, W.M., Emanuel, W.R., Zinke, P.J. and Stangenberger, A.G. 1982: Soil carbon pools and world life zones. *Nature* 298, 156–59.
- Rosén, P., Segerström, U., Eriksson, L., Renberg, I. and Birks, H.J.B. 2001: Holocene climatic change reconstructed from diatoms, chironomids, pollen and near-infrared spectroscopy at an alpine lake (Sjuodjjaure) in northern Sweden. *The Holocene* 11, 551–62.
- Rønning, O.I. 1996: *The flora of Svalbard*. Oslo: Norsk Polarinstitutt, 184 pp.
- Russel, N. 1990: Cold adaptation of micro-organism. *Philosophical Transactions of the Royal Society of London, Series B* 326, 595–611.
- Salvigsen, O. 2002: Radiocarbon-dated *Mytilus edulis* and *Modiolus modiolus* from northern Svalbard: climatic implications. *Norwegian Journal of Geography* 56, 56–61.
- Salvigsen, O., Forman, S.L. and Miller, G.H. 1992: Thermophilous molluscs on Svalbard during the Holocene and their paleoclimatic implications. *Polar Research* 11, 1–10.
- Sand-Jensen, K., Rils, T., Markager, S. and Vincent, W.F. 1999: Slow growth and decomposition of mosses in Arctic lakes. *Canadian Journal of Fisheries and Aquatic Sciences* 56, 388–93.
- Sarnthein, M., Van Kreveld, S., Erlenkeuser, H., Grootes, P.M., Kucera, M., Pflaumann, U. and Schulz, M. 2003: Centennial-to-millennial-scale periodicities of Holocene climate and sediment injections off the western Barents shelf, 75°N. *Boreas* 32, 447–61.
- Scharpenseel, H.W. and Becker-Heidmann, P. 1992: Twenty-five years of radiocarbon dating soils: paradigm of erring and learning. *Radiocarbon* 34, 541–49.
- Seppä, H. and Birks, H.J.B. 2001: July mean temperature and annual precipitation trends during the Holocene in the Fennoscandian tree-line area: pollen-based climate reconstruction. *The Holocene* 11, 527–39.
- Snyder, J.A., Werner, A. and Miller, G.H. 2000: Holocene cirque glacier activity in western Spitsbergen, Svalbard; sediment records from Proglacial Linnévatnet. *The Holocene* 10, 555–63.
- Steward, T.G. and England, J. 1983: Holocene sea-ice variations and paleoenvironmental change, northernmost Ellesmere Island, N.W.T., Canada. *Arctic Alpine Research* 15, 1–17.
- Stuiver, M., Reimer, P.J., Bard, E., Beck, J.W., Burr, G.S., Hughen, K.A., Kromer, B., McCormac, G., van der Plicht, J. and Spurk, M. 1998: INTCAL98 radiocarbon age calibration, 24,000–0 cal BP. *Radiocarbon* 40, 1041–83.
- Summerhayes, V.S. and Elton, C.S. 1928: Further contributions to the ecology of Spitsbergen. *Journal of Ecology* 16, 193–268.
- Svendsen, J.I. and Mangerud, J. 1997: Holocene glacial and climatic variations on Spitsbergen, Svalbard. *The Holocene* 7, 45–57.
- Tønning, T. 1996: Bruk av eit Geografisk informasjonssystem på glaciologiske problemstillinger. Døme frå Longyearbreen og Larsbreen på Svalbard. Unpublished M.Sc. Thesis. Department of Physical Geography, University of Oslo, 106 pp.
- van der Knaap, W.O. 1989: Past vegetation and reindeer on Edgeøya (Spitsbergen) between c. 7900 and 3800 BP, studied by means of peat layers and reindeer faecal pellets. *Journal of Biogeography* 16, 379–95.
- Vatne, G. 2001: Geometry of englacial water conduits, Austre Brøggerbreen, Svalbard. *Norsk Geografisk Tidsskrift* 55, 85–93.
- Wohlfarth, B., Lemdahl, G., Olsson, S., Persson, T., Snowball, I., Ising, J. and Jones, V. 1995: Early Holocene environment on Bjørnøya (Svalbard) inferred from multidisciplinary lake sediment studies. *Polar Research* 14, 253–75.
- Wohlfarth, B., Skog, G., Possnert, G. and Holmqvist, B. 1998: Pitfalls in the AMS radiocarbon-dating of terrestrial macrofossils. *Journal of Quaternary Science* 13, 137–45.
- Zvyagintsev, D.G., Gilichinsky, D.A., Blagodatsky, S.A., Vorobyova, E.A., Khlebnikova, G.M., Arkhangelov, A.A. and Kudryavtseva, N.N. 1985: The time of microbial preservation in constantly frozen sedimentary rocks and buried soils. *Microbiologia* 54, 155–63 (in Russian).