



MD04-139 ASSEMBLAGE 1

Description of Core MD04-2753

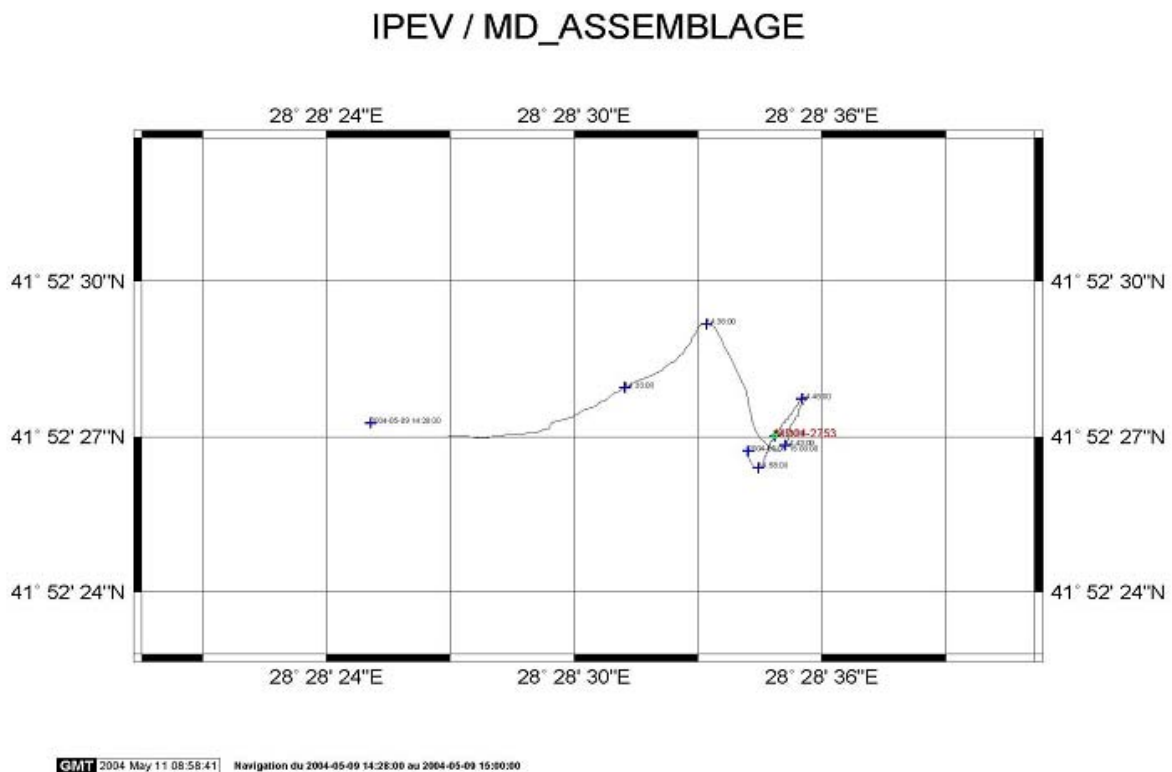


7.2. DESCRIPTION OF CORE MD04-2753

7.2.1. Site presentation

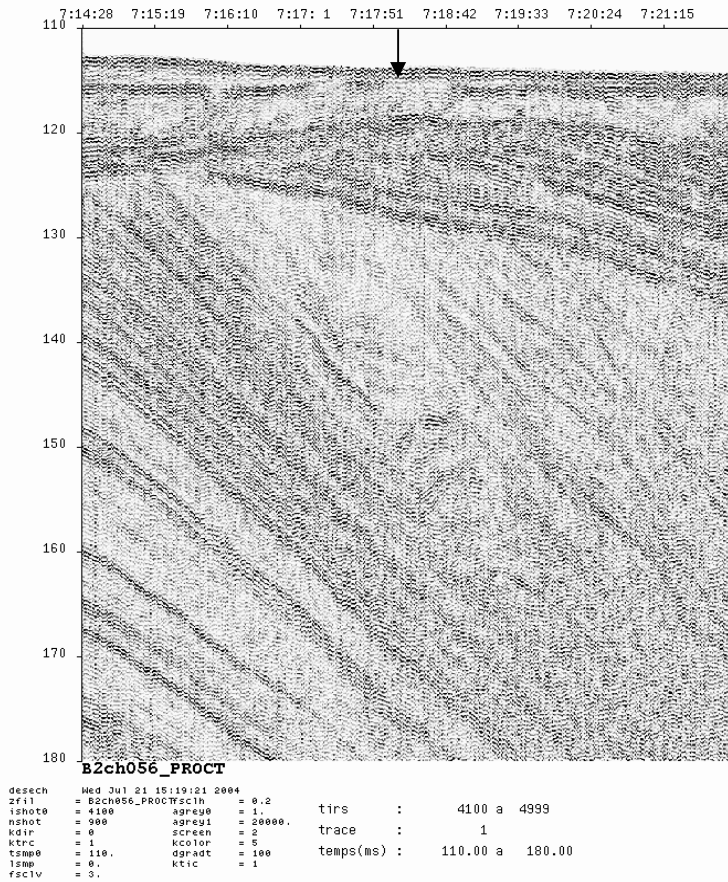
The target has been chosen on the base of the seismic interpretation of the Ifremer Chirp sonar system hull mounted on "Le Suroit". Core MD04-2753 was recovered at a water depth of c.a. 90m, on a profile (B2chp56) shot during BlaSON2 survey in 2002. The core has been recovered on the same seismic line than MD04-2754 (water depth 450 m) and MD04-2752 (water depth 200 m). The target is located on the continental shelf in the western part of the Black Sea at the border between Turkey and Bulgaria. It has been taken on a wide paleo-channel cutting underneath prograding reflectors. This paleo-channel is puzzling and the information to be collected from the core will provide information on the drainage system during Lowstands.

7.2.2. Location map

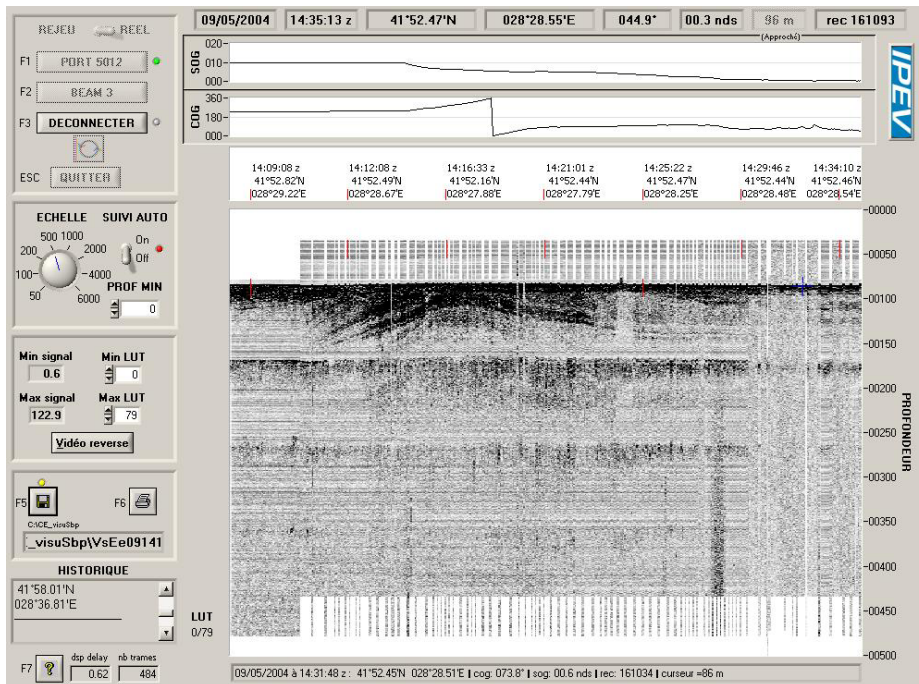


7.2.3. MD04-2753 precise Site Survey

7.2.3.1. Profile acquired during BlaSON2



7.2.3.2. MD04-2753 Site Survey



7.2.4. MD04-2753 Coring Form

INSTITUT PAUL EMILE VICTOR

MARION DUFRESNE

NOM DE LA CAMPAGNE
MD 139 ASSEMBLAGE

Date : **09-05-2004**
N^o de station **ASSMD35**

Météo : (force) / Direction
Vent :
Mer :
Variation tension (maxi) :

CAROTTE (N^o) :
MD 04-2753
(MD - année - milles - centaines)

CAROTTE (longueur) :
11 m

POSITION :
Latitude : **41°52.464'**
Longitude : **28°28.566'**

CAROTTIER (type) ⁽¹⁾ : **CALYPSO II**

Poids total (air) : **4,1** t

Poids total (eau) : **3,8** t

REGLAGES :
Tubes (longueur) : **20,78** m
Câbles : **1,50** m
Chute libre : **1,60** m
Boucle : **25,48** m
LC poids : m

CONTREPOIDS :
Type (2) :
Longueur PVC : m
Pénétration : m
Longueur de carotte : m

PARAMETRES MESURES :
Sonde corrigée : **~ 63** m
Ligne filée : **67** m
Arrachement/total (tonne) : **5** t
Arrachement/différentiel (tonne) : t
Pénétration/apparente (m) : m
Pénétration/tensiomètre (m) : m

HEURES (GMT)
En station : **14h32**
Début manœuvre : **14h53**
Déclenchement : **14h54**
Fin de manœuvre :
Durée de manœuvre :
Départ station :

INSTRUMENTATION OPERATIONS ANNEXES
Pinger :
Flux de chaleur :
CTD (hydro) :
CTD (bouteilles) :
Filet à plancton :
Autres : /

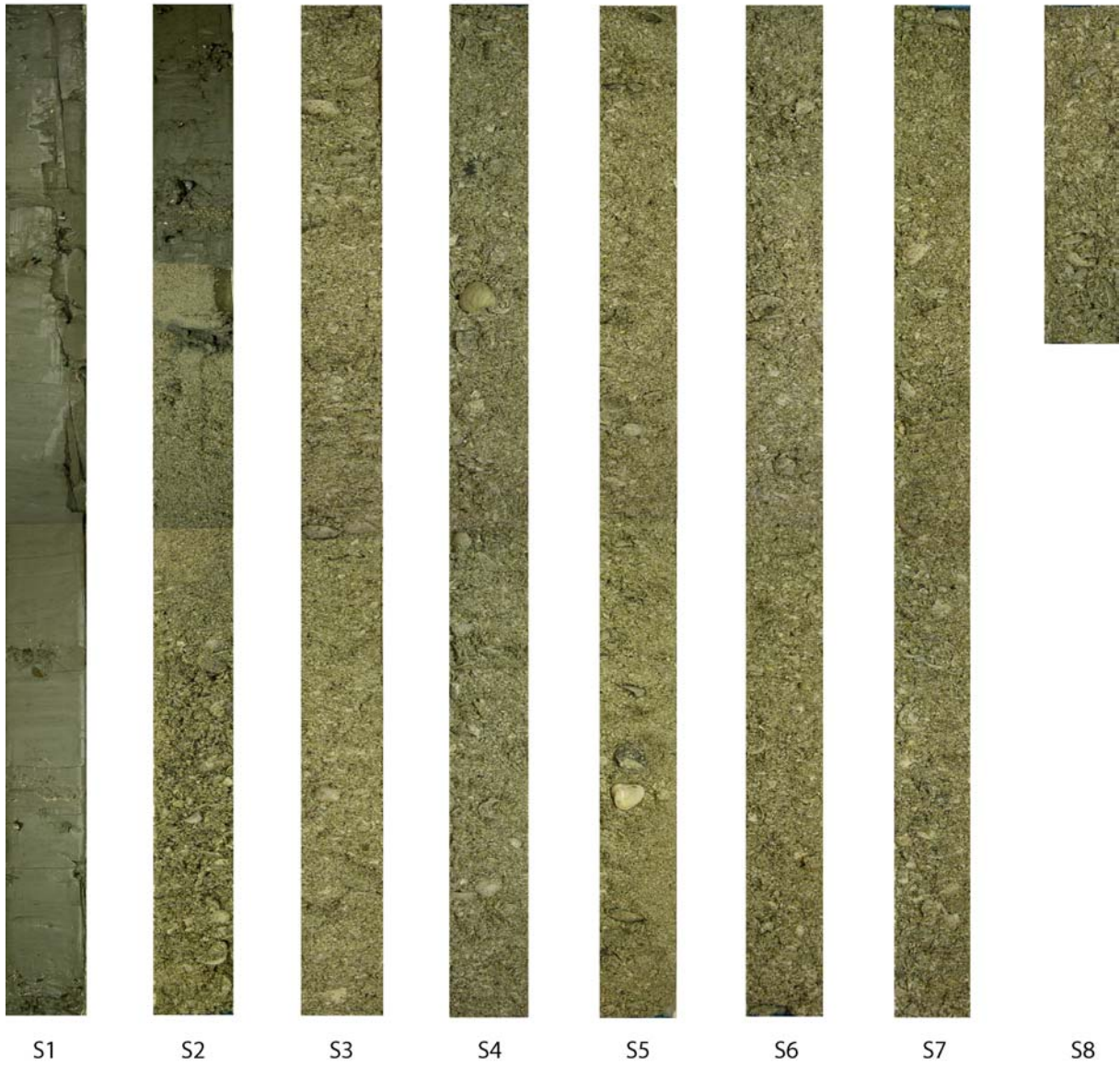
Description / incidents :

Pas de sac semble t-il ?

0	150	300	450	600	750	900	1050
I	II	III	IV	V	VI	VII	
X	X	X	X	X	X	X	
1100							
1050	1200	1350	1500	1650	1800	1950	2100
VIII	IX	X	XI	XII	XIII	XIV	
X							
base							
2100	2250	2400	2550	2700	2850	3000	3150
XV	XVI	XVII	XVIII	XIX	XX	XXI	
3150	3300	3450	3600	3750	3857	3933	
XXII	XXIII	XXIV	XXV	XXVI	XXVII		

7.2.5. MD04-2753 Photography table

MD04-2753 :Section 1 to 8




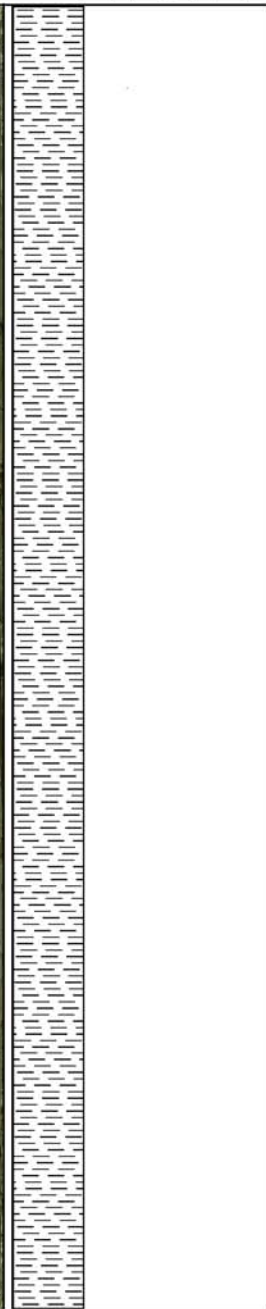
7.2.6. MD04-2753 Log Description

Mission: ASSEMBLAGE



Core : MD04-2753	Depth : 63 m	Sections: I/VIII	Lenght top/bottom(cm): 0-150
------------------	--------------	------------------	------------------------------

Author : F. Lemy

Sample	Lithology	Mud						Sand						Fossils	Bioturbation	Detailed description
		C	CS	S	vf	f	m	c	vf	f	m	c				
0																0-50 : very soft 50-150 : soft
10																0-150 : homogeneous light olive-grey clay with occasional shell fragments bioturbated throughout
20																
30																
40														C C		40 : larger, complete shell
50																
60														C C		56 : larger, complete shell
70																
80																
90																
100																
110																116-118 : discontinuous shell harsh layer
120																
130																
140																
150													C C		148-150 : large shells	

Mission: ASSEMBLAGE



Core : MD04-2753	Depth : 63 m	Sections: II /VIII	Lenght top/bottom(cm): 150-300
------------------	--------------	--------------------	--------------------------------

Author : Com

Sample	Lithology	Mud							Sand							Fossils	Bioturbation	Detailed description
		C	CS	S	vf	f	m	c	vf	f	m	c						
0																C	SSS	0-39.5 : shell layers in slightly mottled (Fe-MnO) grey-green mud 8-11 : <i>Mytilus</i> 25-26 : <i>Dreissena</i> 28-30 : Large <i>Mytilus</i> 32-34 : <i>Dreissena</i> harsh w/ <i>Tunicaspia</i> 39.5 : Abrupt lithographic change 39.5-150 : shell gravel overall fining upward ; very coarse shell debris with rounded pebbles below 95 cm 49-52 : irregular mud layer shell gravel is fairly clean with little terrigenous material above 95 cm, shells are mostly very abraded, particularly the large shell fragments
10		C	SSS															
20		C	SSS															
30		C	SSS															
40		C	SSS															
50		C																
60		C																
70		C																
80		C																
90		C																
100		C																
110		C																
120		C																
130		C																
140		C																
150	C																	



Mission: ASSEMBLAGE



Core : MD04-2753	Depth : 63 m	Sections:III /VIII	Lenght top/bottom(cm): 300-450
------------------	--------------	--------------------	--------------------------------

Author : Com

Sample	Lithology	Mud						Sand						Fossils	Bioturbation	Detailed description	
		C	CS	S	vf	f	m	c	vf	f	m	c					
0															C	SSS	0-39.5 : shell gravel coarse sand-sized to large shell debris most shells highly abraded.
10															C	SSS	Largest shells/fragments are Cardiid-like bivalves.
20															C	SSS	Small <i>Dreissena</i> + <i>Tuniscaspia</i>
30															C	SSS	Some well-rounded pebbles throughout but overall very little terrigenous material.
40															C	SSS	
50															C	SSS	
60															C	SSS	
70															C	SSS	
80															C	SSS	
90															C	SSS	
100															C	SSS	
110															C	SSS	
120															C	SSS	
130															C	SSS	
140															C	SSS	
150														C	SSS		



Mission: ASSEMBLAGE



Core : MD04-2753	Depth : 63 m	Sections:IV /VIII	Lenght top/bottom(cm): 450-600
------------------	--------------	-------------------	--------------------------------

Author : Com

Sample	Lithology	Mud						Sand						Fossils	Bioturbation	Detailed description	
		C	CS	S	vf	f	m	e									
0																0-150 : shell gravel (as section III) large bivalve shells up to 5 cm	
10																	
20																	
30																	
40																	
50																	
60																	
70																	
80																	
90																	
100																	
110																	
120																	
130																	
140																	
150																	


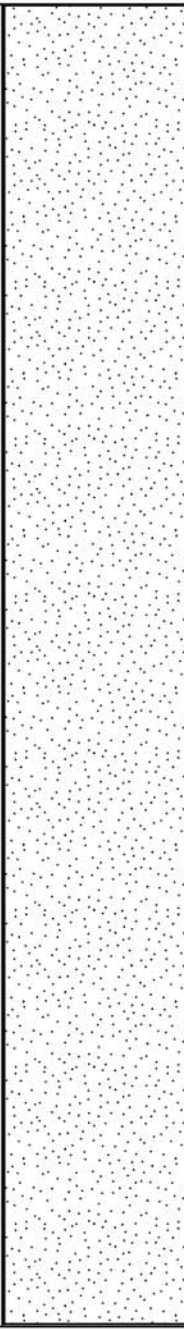


Mission: ASSEMBLAGE



Core : MD04-2753	Depth : 63 m	Sections: V / VIII	Lenght top/bottom(cm): 600-750
------------------	--------------	--------------------	--------------------------------

Author : Com

Sample	Lithology	Mud							Sand							Fossils	Bioturbation	Detailed description
		C	CS	S	vf	f	m	e	vf	f	m	e						
0																C		<p>0-150 : shell gravel (as section III)</p> <p>coarse sand-sized to large shell debris most shells highly abraded, some small <i>Dreissena</i> well-preseved.</p> <p>Largest shells are clam-like bivalves, possibly candiids and/oe <i>Monodaena</i> ; other very large <i>Dreissena</i> (?)</p> <p>Some large shells are covered with a dark grey-balck incrustation</p> <p>Some well rounded pebbles throughout</p>
10																C		
20																C		
30																C		
40																C		
50																C		
60																C		
70																C		
80																C		
90																C		
100																C		
110																C		
120																C		
130																C		
140																C		
150	C																	




Mission: ASSEMBLAGE



Core : MD04-2753	Depth : 63 m	Sections: VI/VIII	Lenght top/bottom(cm): 750-900
------------------	--------------	-------------------	--------------------------------

Author : Com

Sample	Lithology	Mud						Sand						Fossils	Bioturbation	Detailed description
		C	CS	S				vf	f	m	c					
0														C		0-150 : shell gravel (as section V)
10														C		coarse sand-sized to large shell debris most shells highly abraded, some small <i>Dreissena</i> well-preseved.
20														C		Largest shells are clam-like bivalves, possibly candiids and/oe <i>Monodaena</i> ; other very large <i>Dreissena</i> (?) Some large shells are covered with a dark grey-balck incrustation
30														C		
40														C		
50														C		Some well rounded pebbles throughout
60														C		
70														C		
80														C		
90														C		
100														C		
110														C		
120														C		
130														C		
140														C		
150													C			


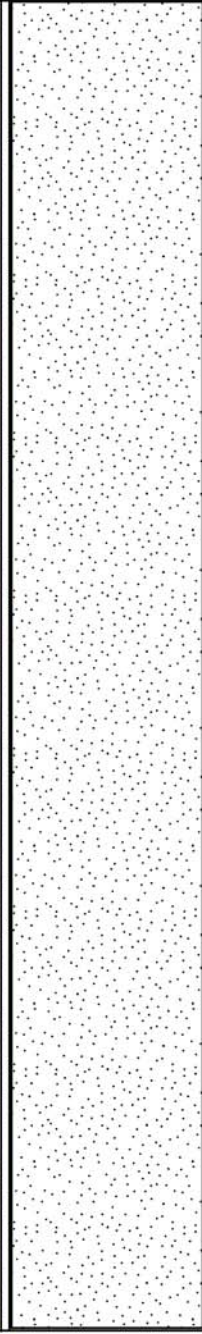


Mission: ASSEMBLAGE



Core : MD04-2753	Depth : 63 m	Sections:VII/VIII	Lenght top/bottom(cm):1050-1100
------------------	--------------	-------------------	---------------------------------

Author : Com

Sample	Lithology	Mud						Sand						Fossils	Bioturbation	Detailed description
		C	CS	S	vf	f	m	e	vf	f	m	e				
0														C		Lenght : 150.3 cm 0-150.3 : shell gravel (as section VI)
10		C														
20		C														
30		C														
40		C														
50		C														
60		C														
70		C														
80		C														
90		C														
100		C														
110		C														
120		C														
130		C														
140		C														
150	C															



Mission: ASSEMBLAGE



Core : MD04-2753	Depth : 63 m	Sections: VIII/VIII	Lenght top/bottom(cm): 1050-1100
------------------	--------------	---------------------	----------------------------------

Author : Com

Sample	Lithology							Fossils	Bioturbation	Detailed description
	C	CS	S	vf	f	m	e			
0										Lenght : 49.7 cm
10								C		0-49.7 : shell gravel (as section VII)
20								C		
30								C		
40								C		
50								C		
60								C		
70								C		
80								C		
90								C		
100								C		
110								C		
120								C		
130								C		
140								C		
150								C		

