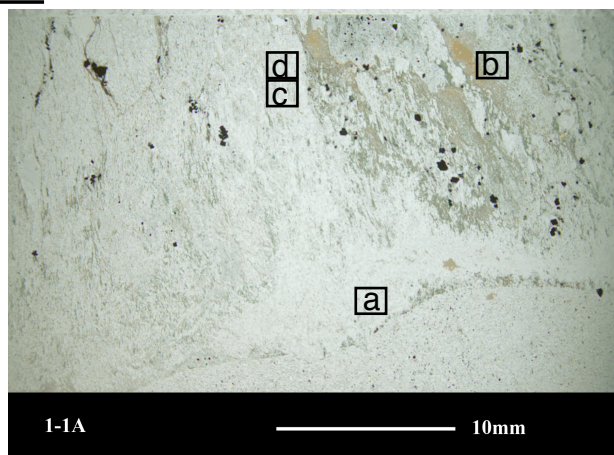
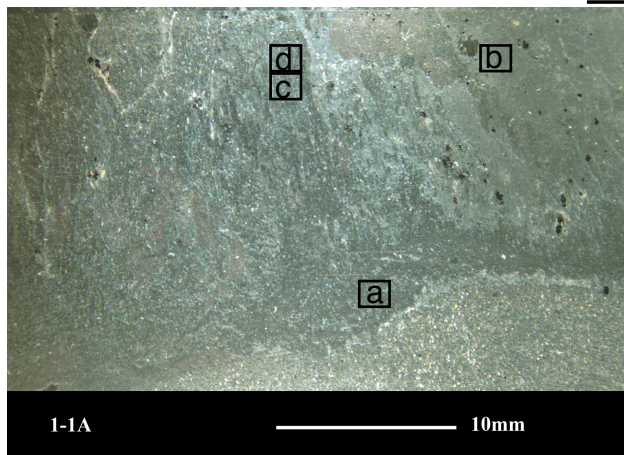


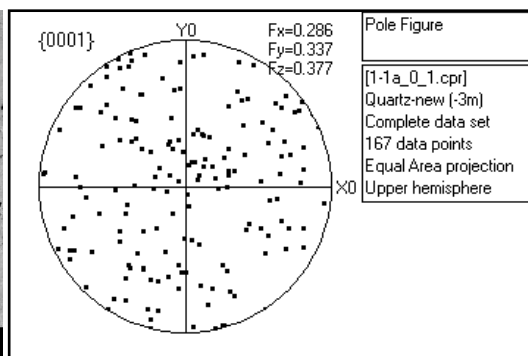
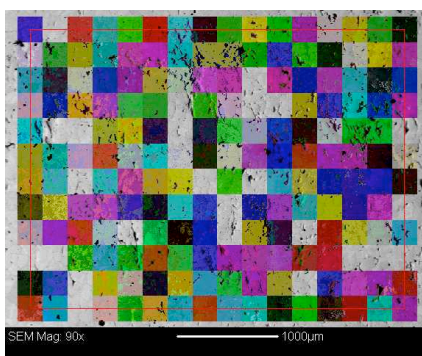
Appendix A

Cobble samples were collected from each site and thin sections were cut from cobble sections and strain shadow sections. Thin sections with the suffix A, B, or C were cut from within the cobble's adjoining strain shadow; parallel to the the cobble's X-Z, X-Y, and Y-Z planes, respectively. Thin sections with the suffix D were cut from the middle of the cobble, roughly parallel to the X-Z planes of the cobbles. Two macroscopic images, one in reflected light (left) and the other in plane polarized light (right), are shown for each thin section. The lettered boxes in the thin section images correspond to a sample grid and data for each grid can be found next to the corresponding letter in the index below the images. EBSD images with a colored overlay and an associated quartz c-axis orientation plot are indexed for each sample grid. These c-axis orientation plots are oriented with their X-Y planes parallel and Z axis perpendicular to the thin section's surface. The number of points within each plot is listed to the right of the pole Figure. Where grids of data were stitched together, plots contain data for multiple grids and are listed in the index under multiple letters.

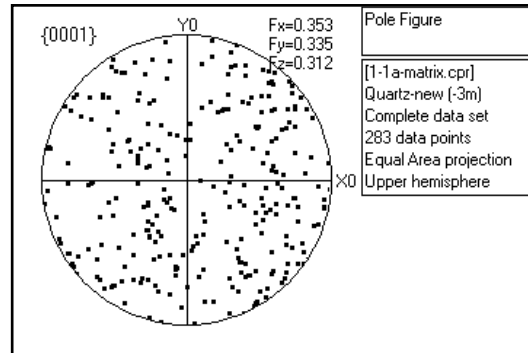
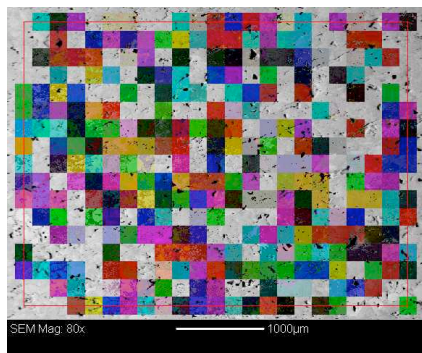
Site 1



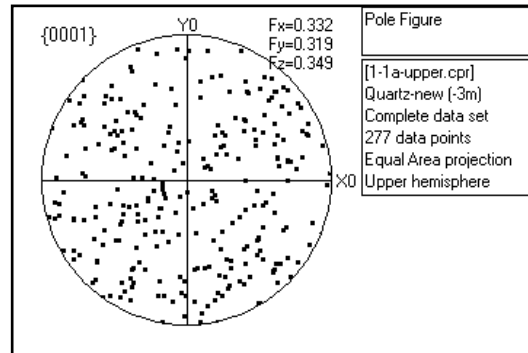
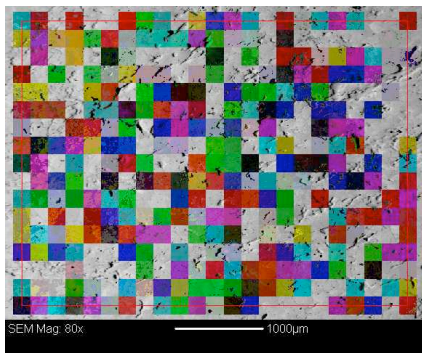
A: 1-1a_0_1



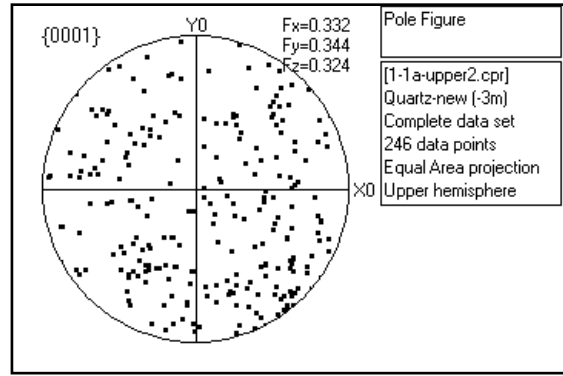
B: 1-1a-matrix



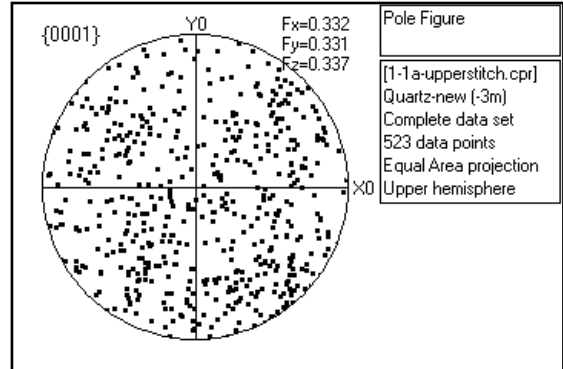
C: 1-1a-upper

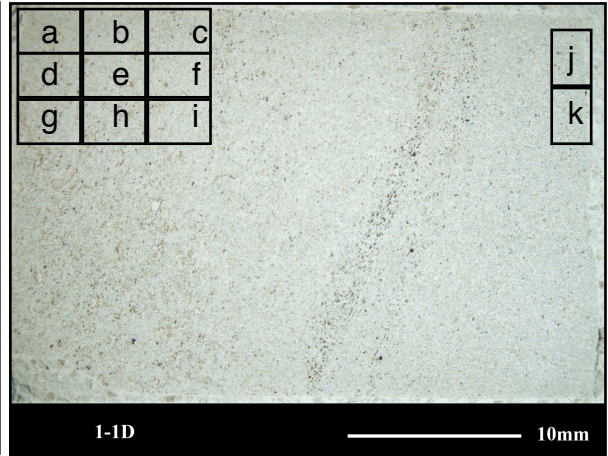
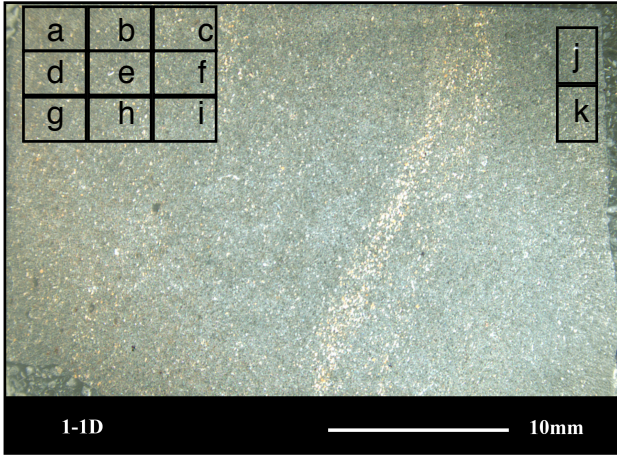


D: 1-1a-upper2

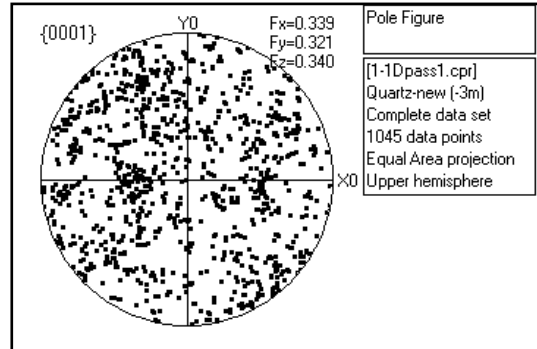
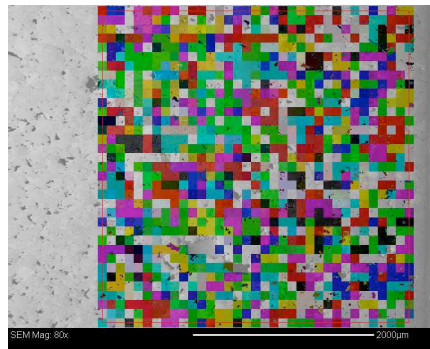


C+D: 1-1a-upper and 1-1a-upper2

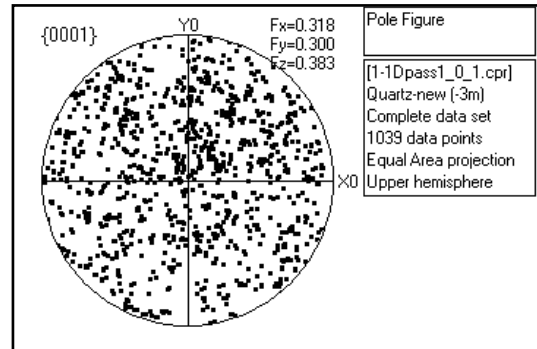
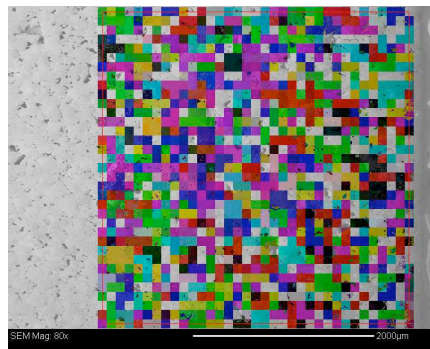




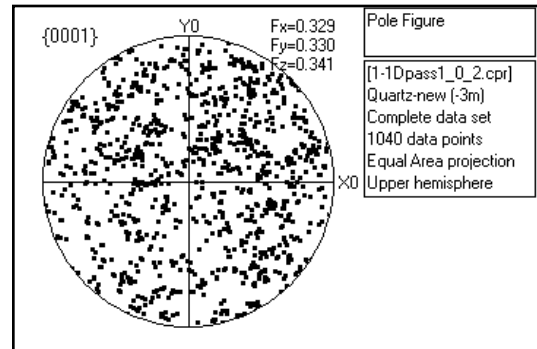
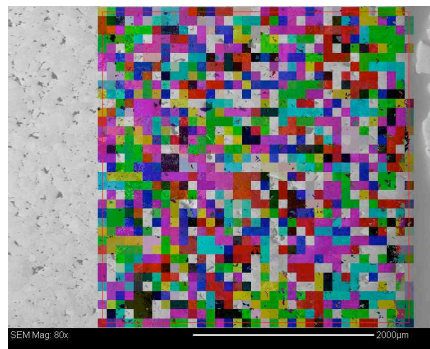
A: 1-1DPass1



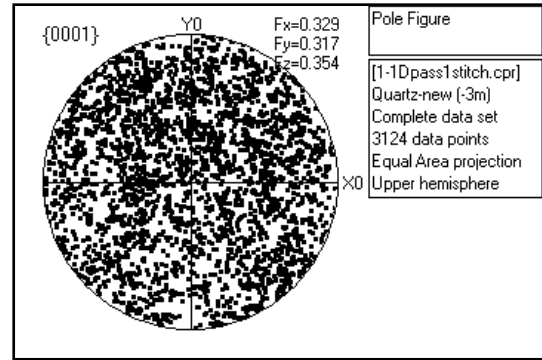
B: 1-1DPass1_0_1



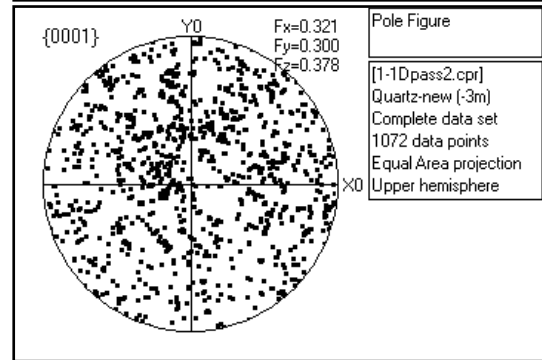
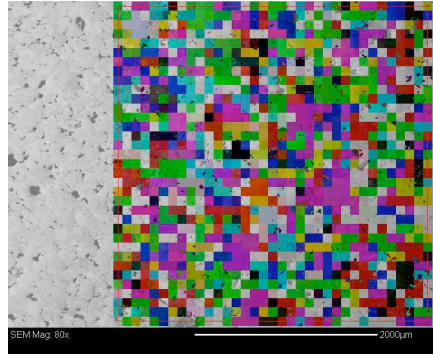
C: 1-1DPass1_0_2



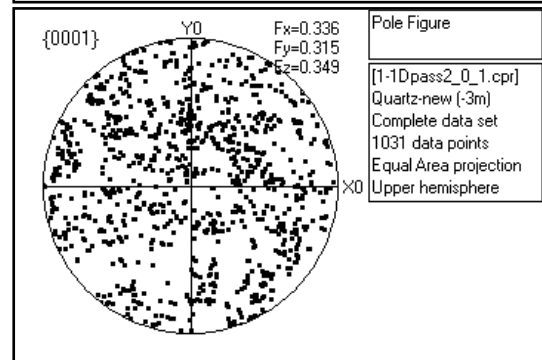
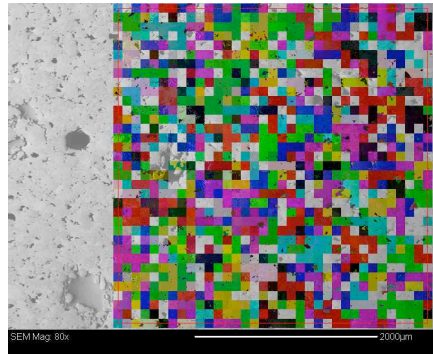
A+B+C: 1-1DPass1, 1-1DPass1_0_1, and 1-1DPass1_0_2



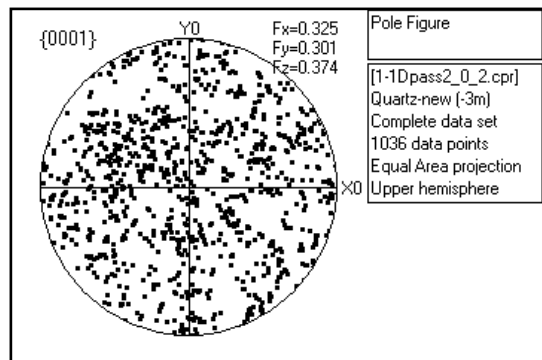
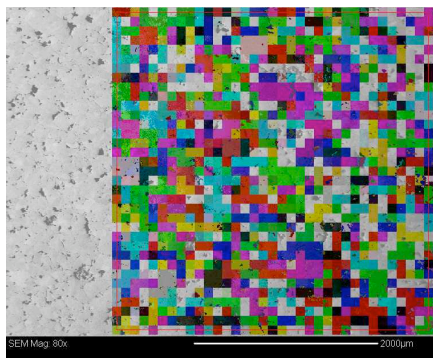
D: 1-1DPass2



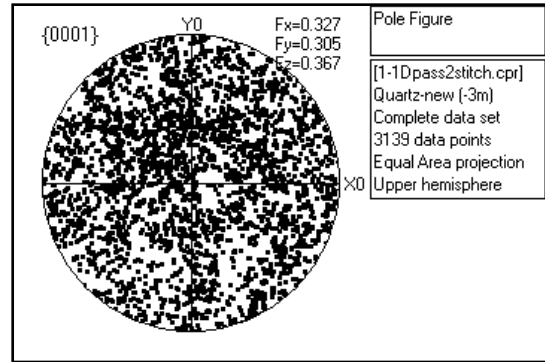
E: 1-1DPass2_0_1



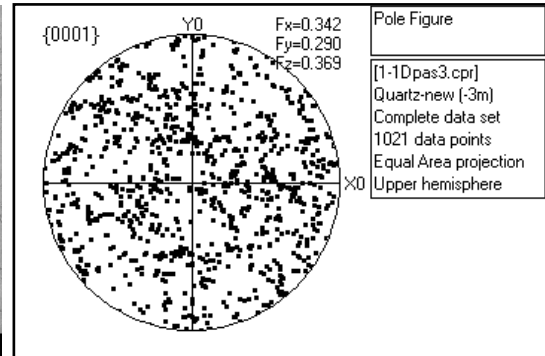
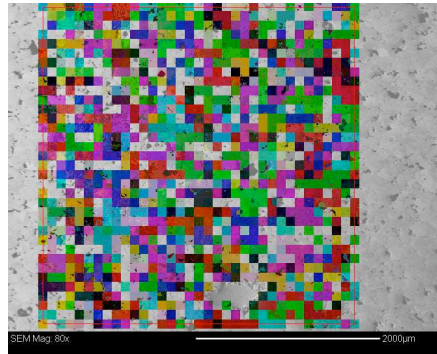
F: 1-1DPass2_0_2



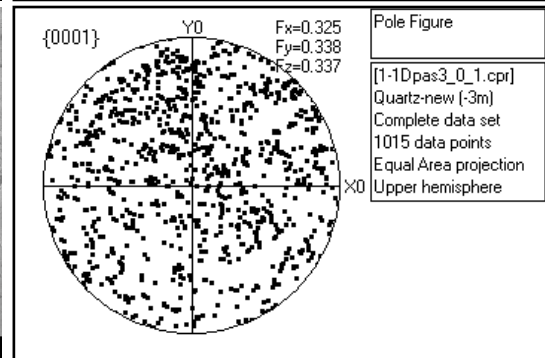
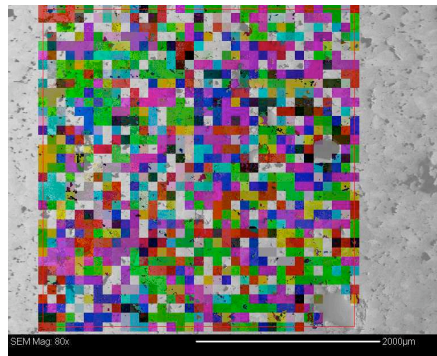
D+E+F: 1-1DPass2, 1-1DPass2_0_1, and 1-1DPass2_0_2



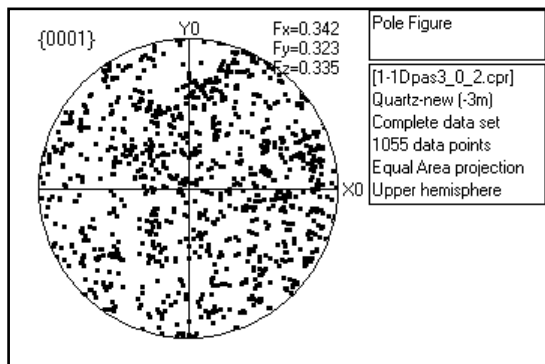
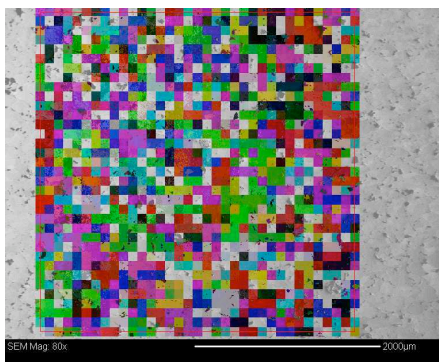
G: 1-1DPass3



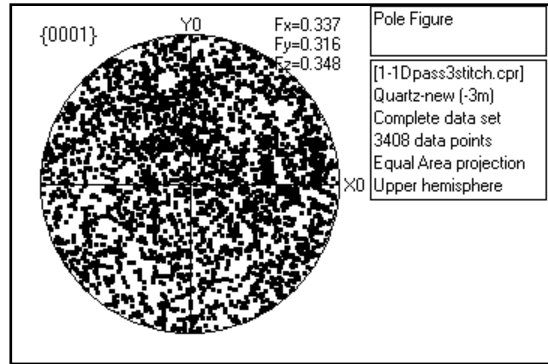
H: 1-1DPass3_0_1



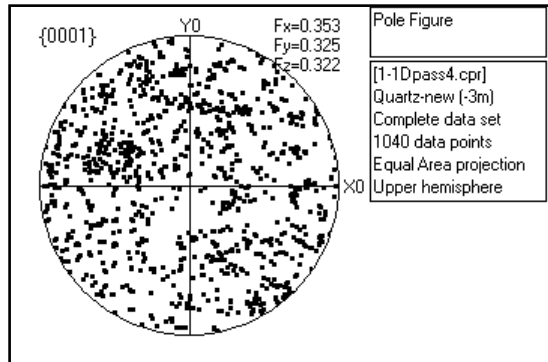
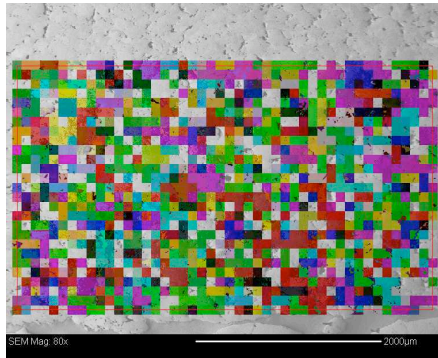
I: 1-1DPass3_0_2



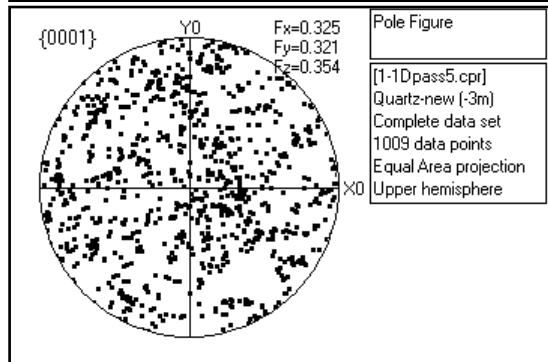
G+H+I: 1-1DPass3, 1-1DPass3_0_1, and 1-1DPass3_0_2



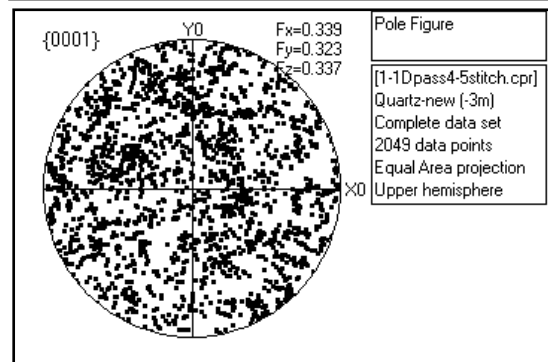
J: 1-1DPass4



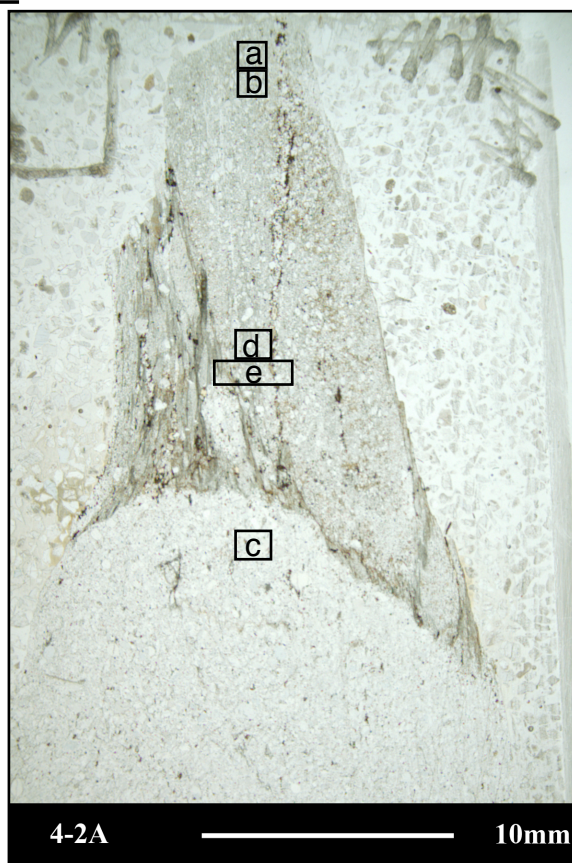
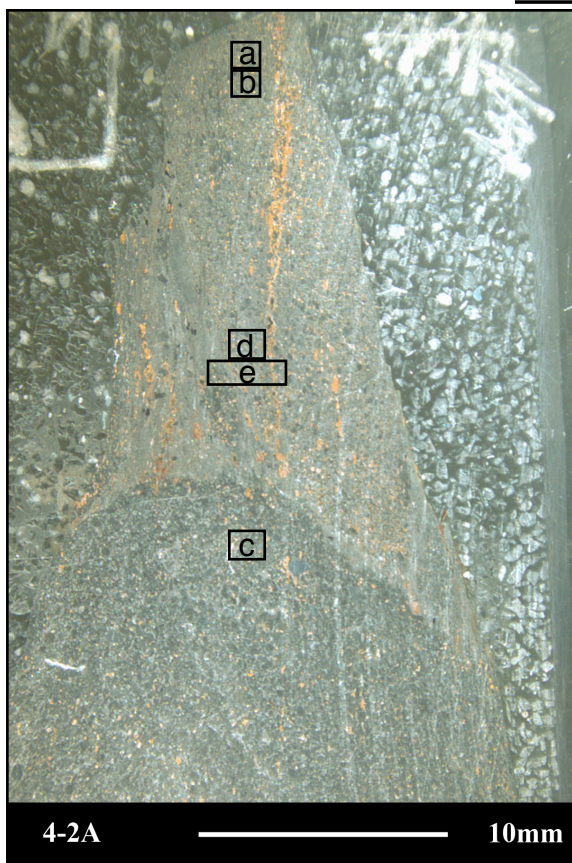
K: 1-1DPass5



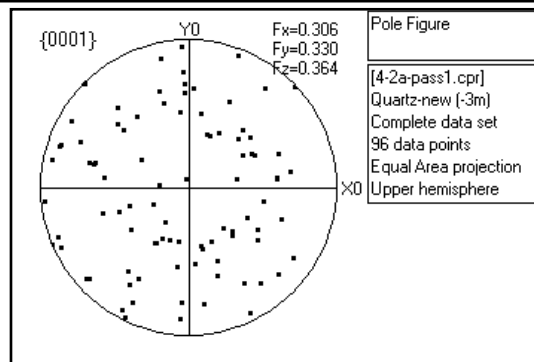
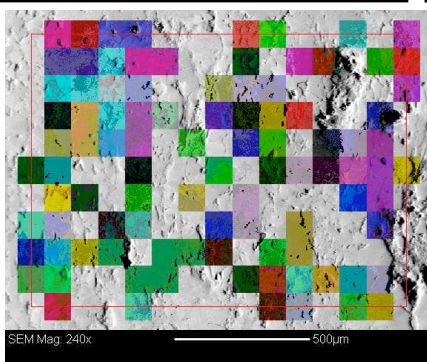
J+K: 1-1DPass4 and 1-1DPass5



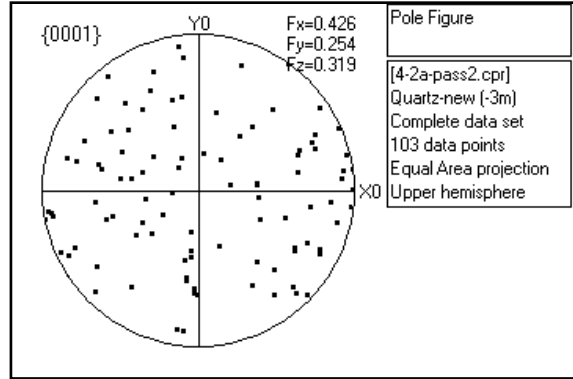
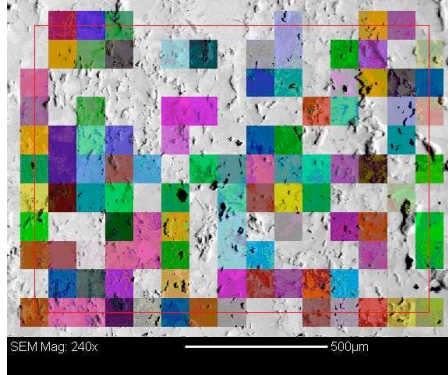
Site 2



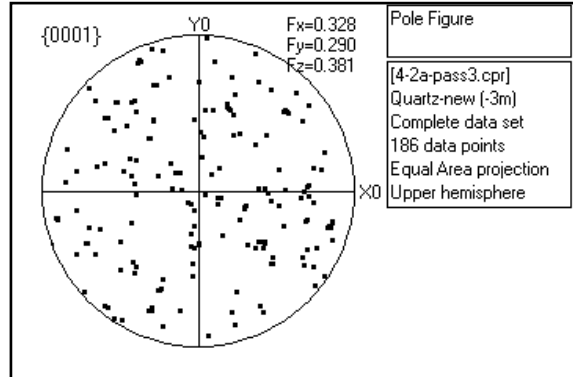
A: 4-2APass1



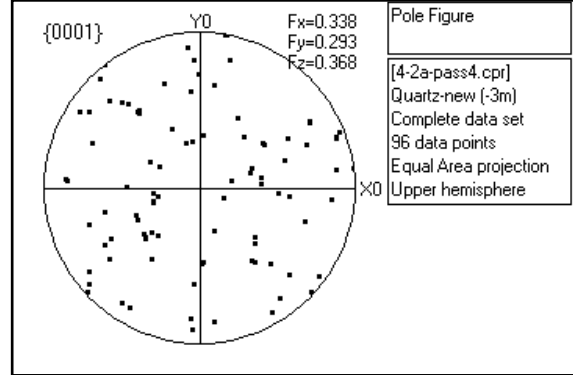
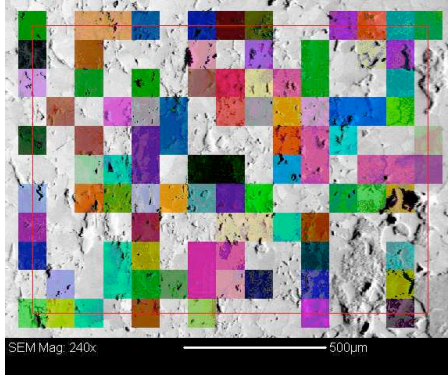
B: 4-2APass2



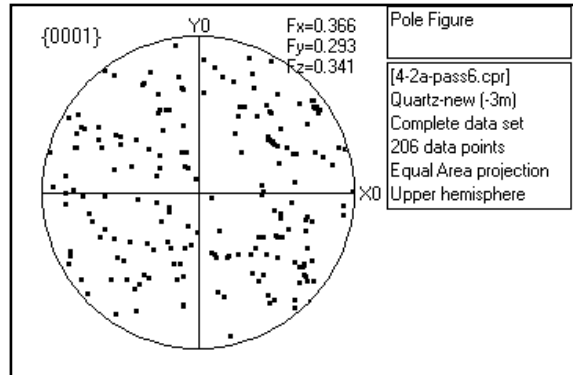
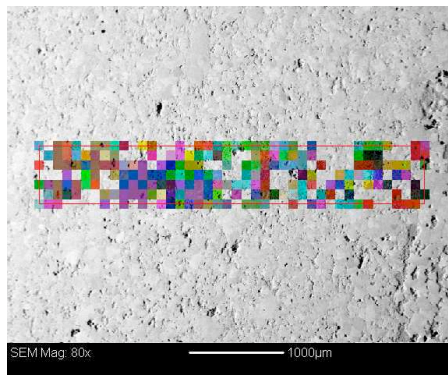
C: 4-2APass3

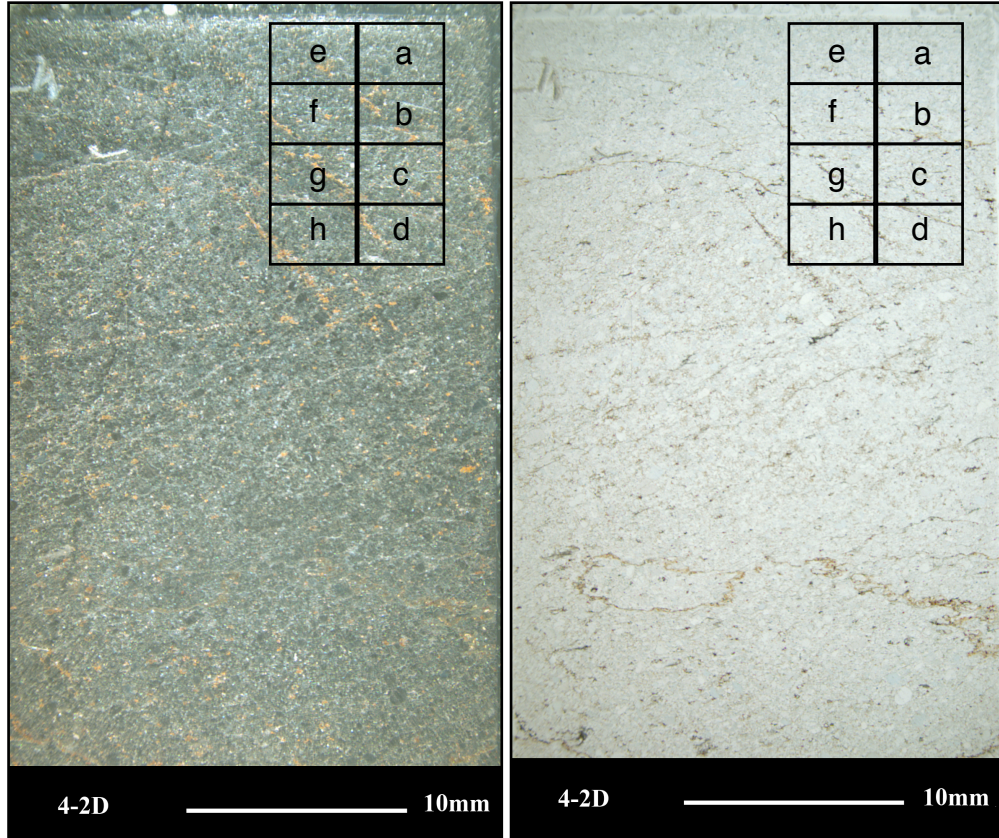


D: 4-2APass4

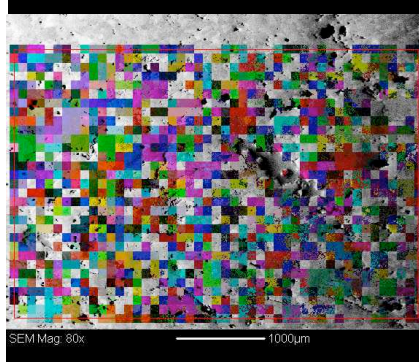
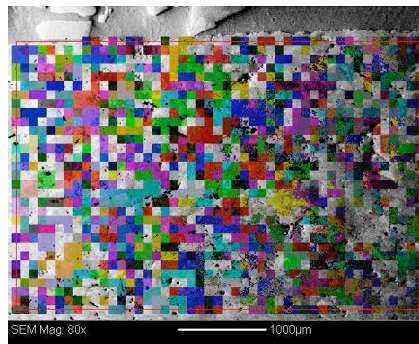


E: 4-2APass6

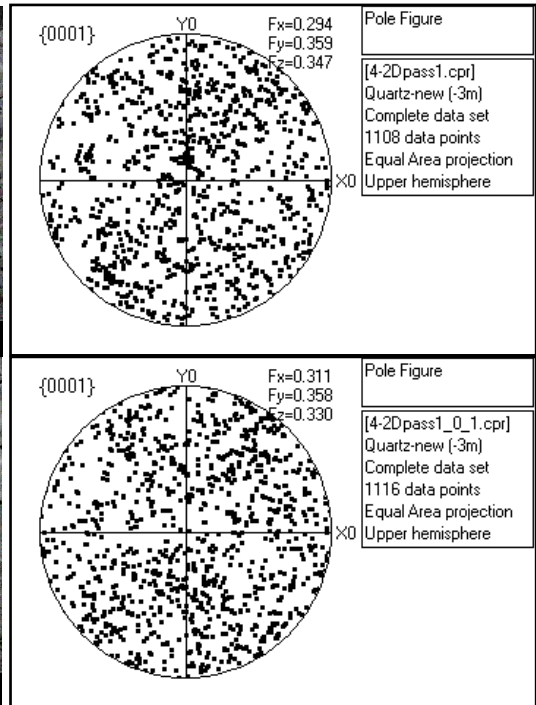




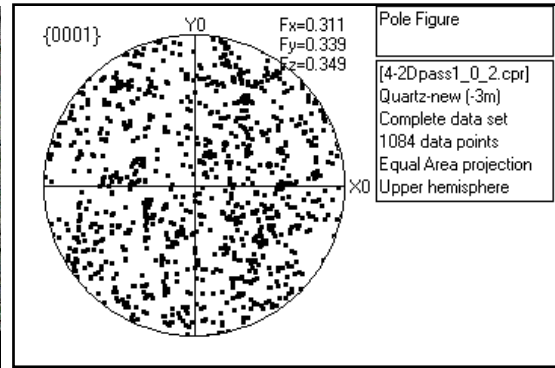
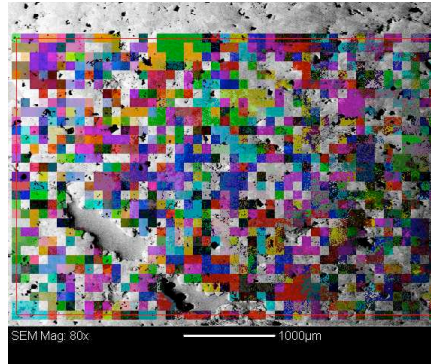
A: 4-2DPass1



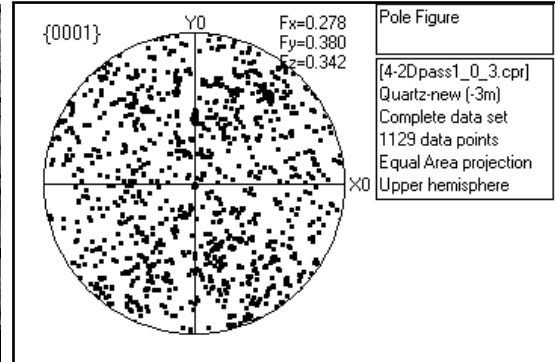
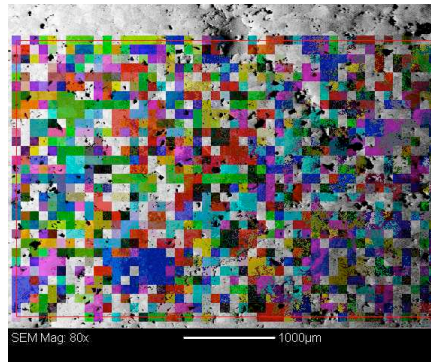
B: 4-2DPass1_0_1



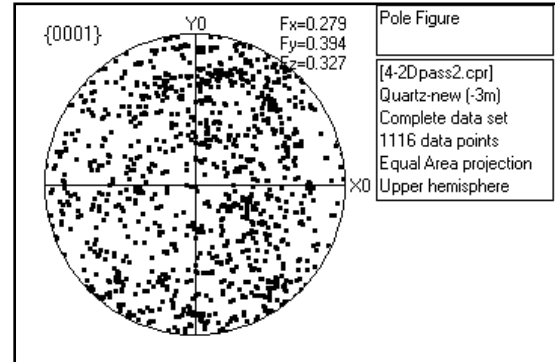
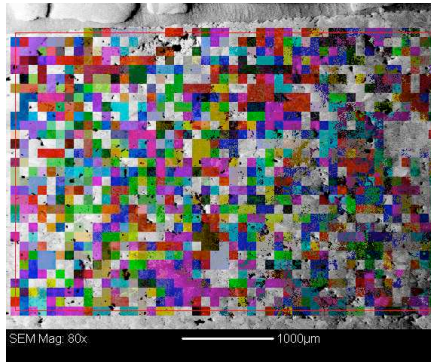
C: 4-2DPass1_0_2



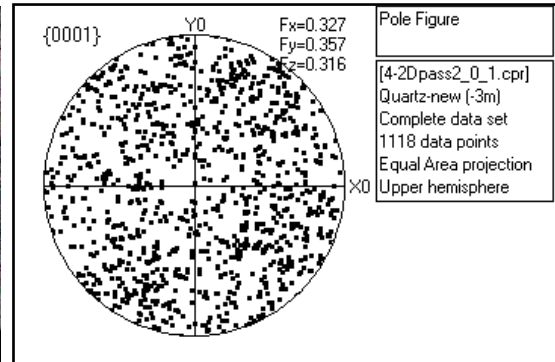
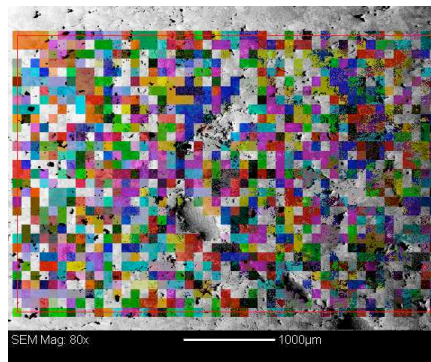
D: 4-2DPass1_0_3



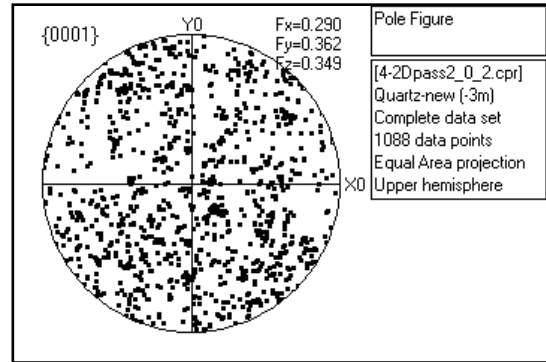
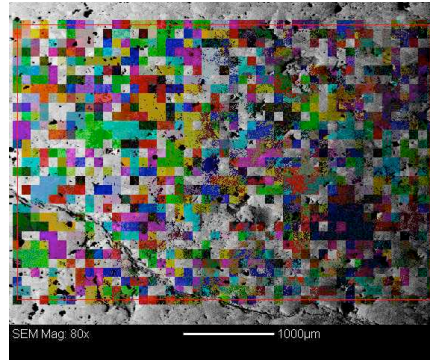
E: 4-2DPass2



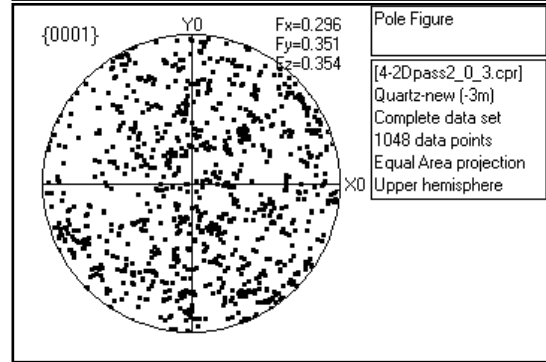
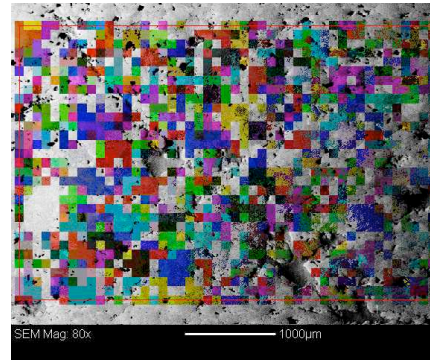
F: 4-2DPass2_0_1



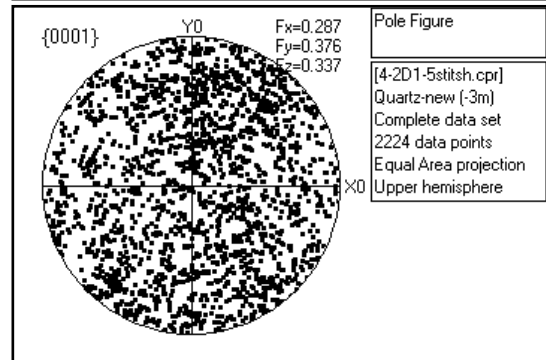
G: 4-2DPass2_0_2



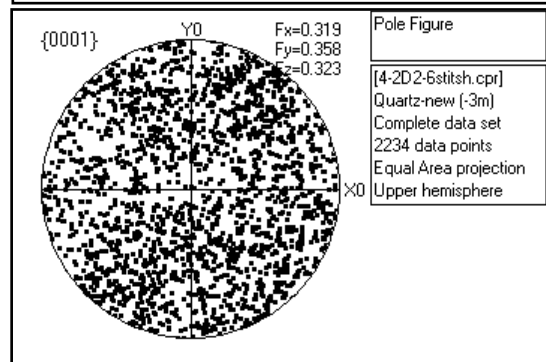
H: 4-2DPass2_0_3



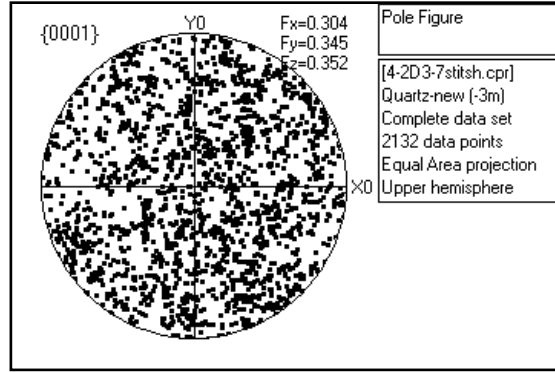
A+E: 4-2DPass1 and 4-2DPass2



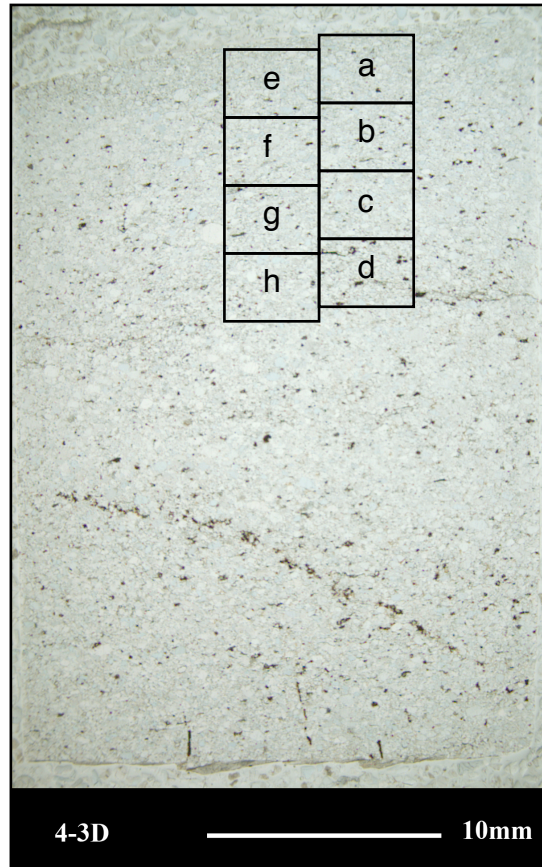
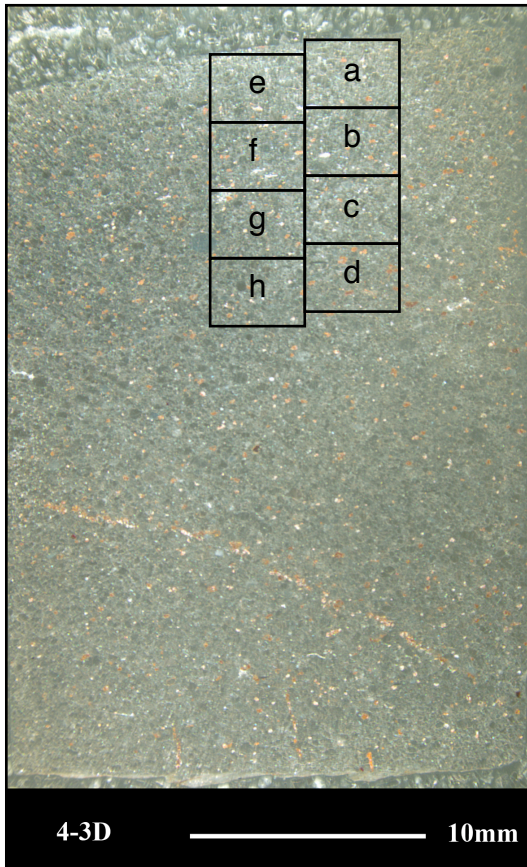
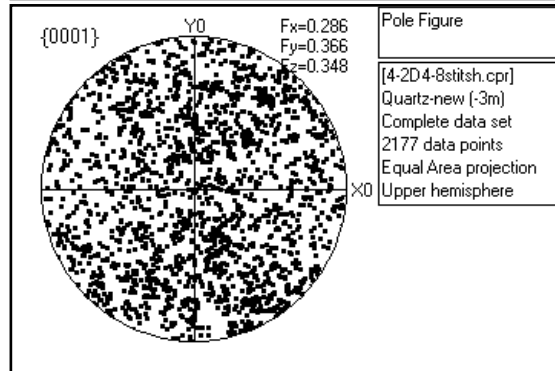
B+F: 4-2DPass1_0_1 and 4-2DPass2_0_1



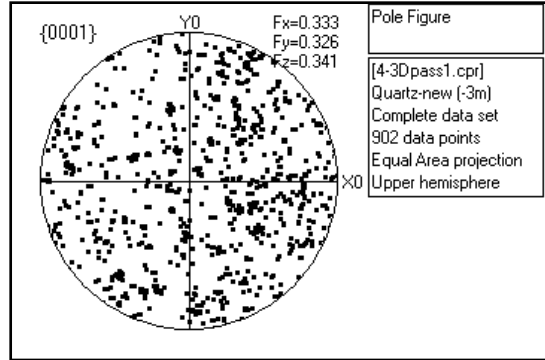
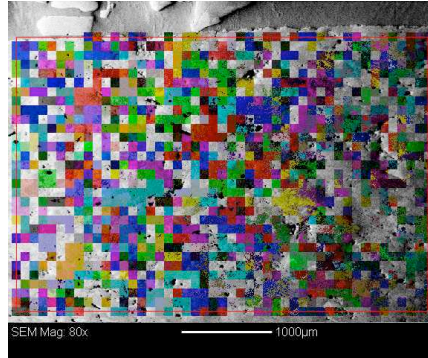
C+G: 4-2DPass1_0_2 and 4-2DPass2_0_2



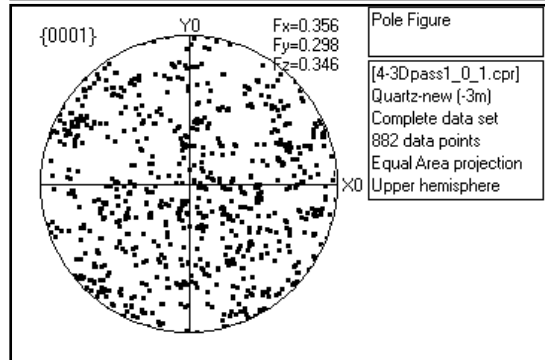
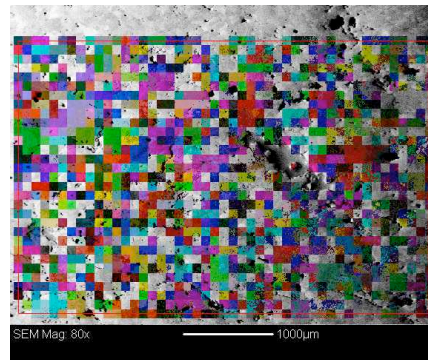
D+H: 4-2DPass1_0_3 and 4-2DPass2_0_3



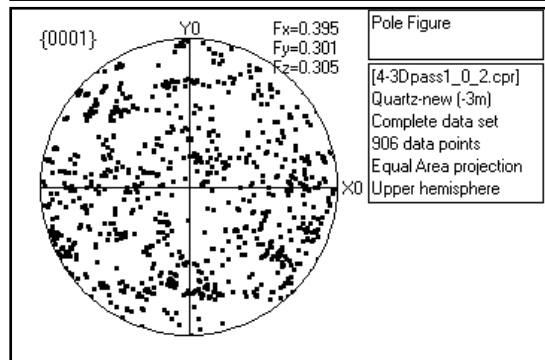
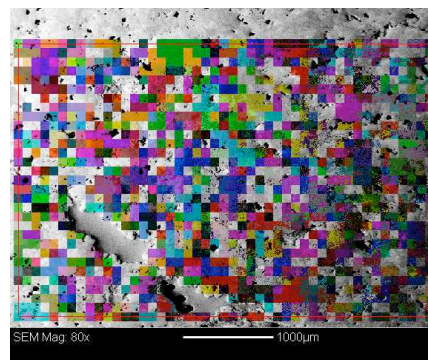
A: 4-3DPass1



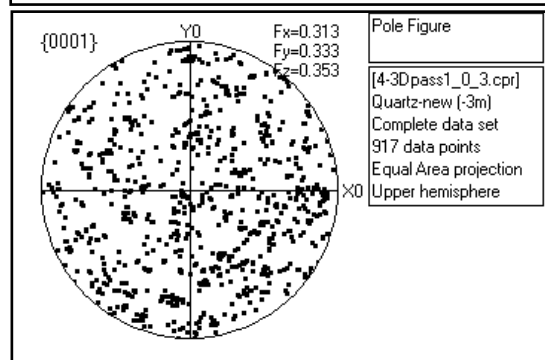
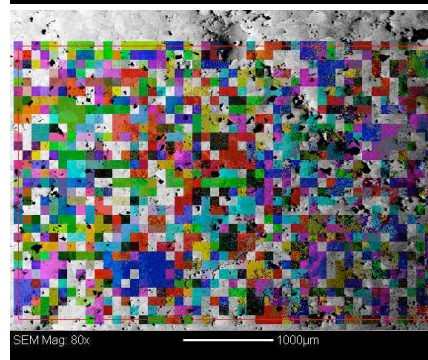
B: 4-3DPass1_0_1



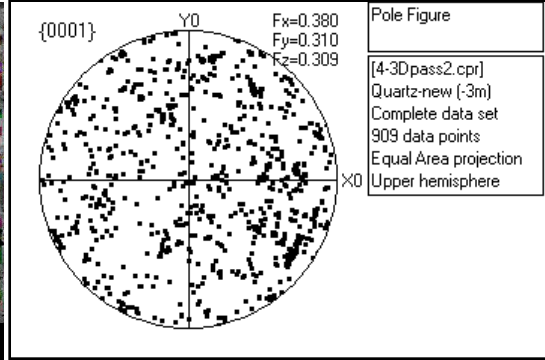
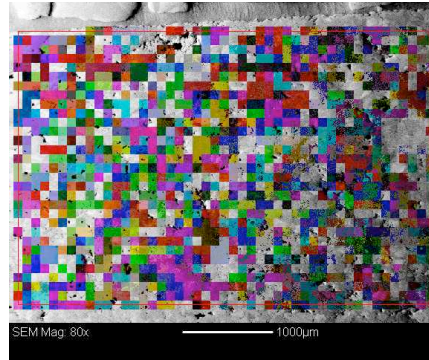
C: 4-3DPass1_0_2



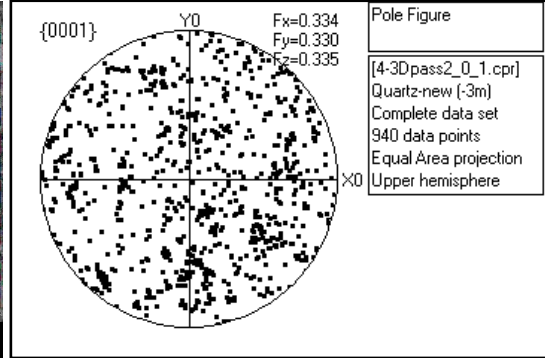
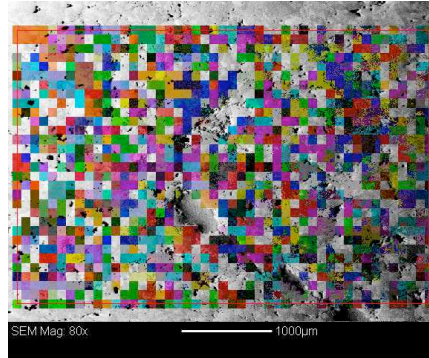
D: 4-3DPass1_0_3



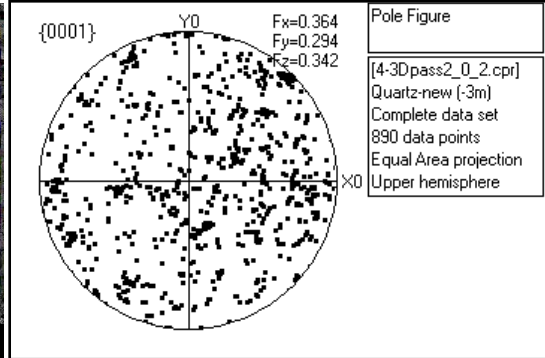
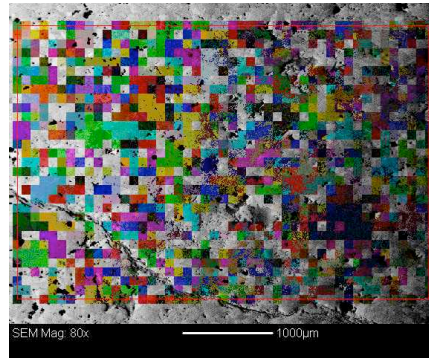
E: 4-3DPass2



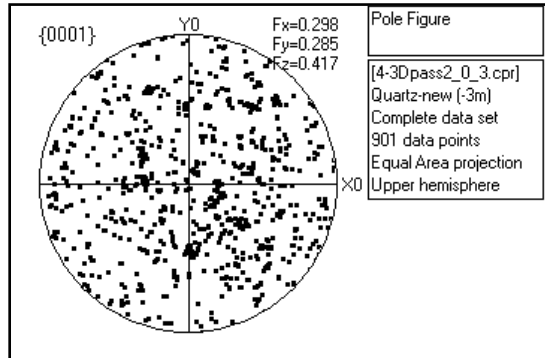
F: 4-3DPass2_0_1

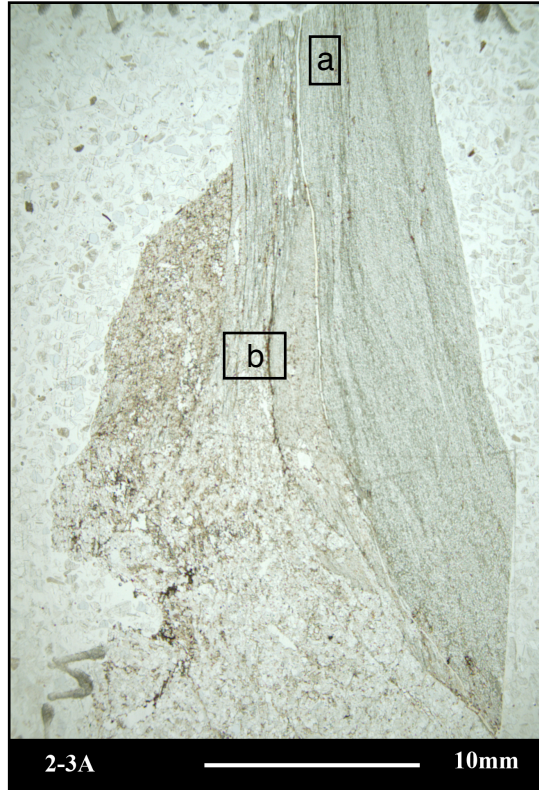
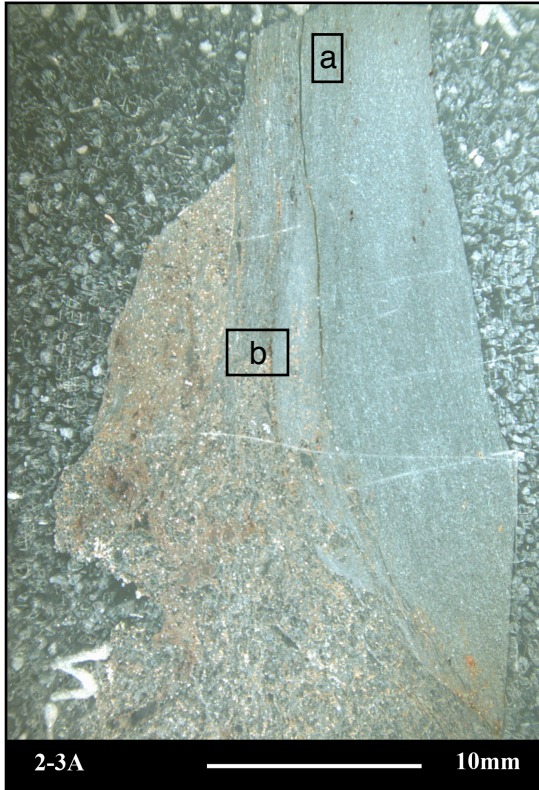


G: 4-3DPass2_0_2

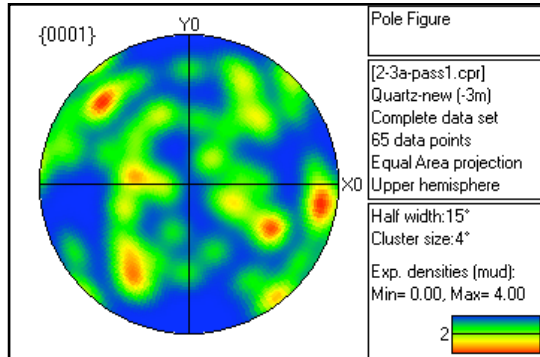
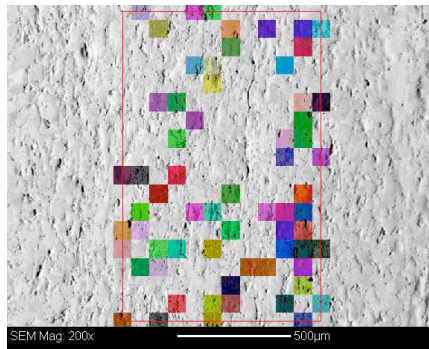


H: 4-3DPass2_0_3

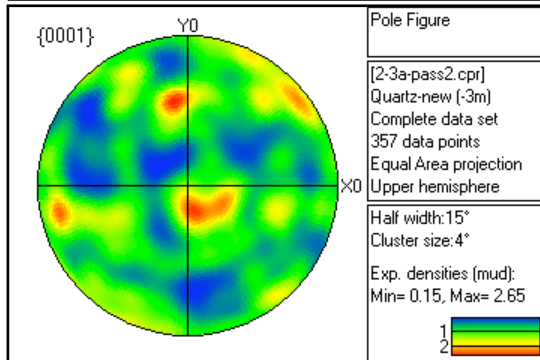
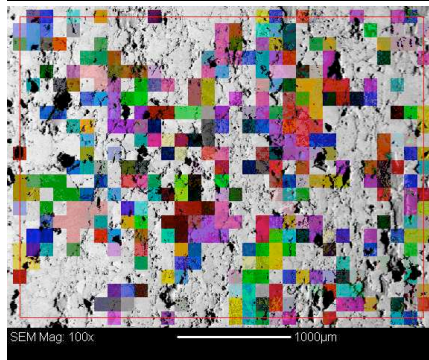


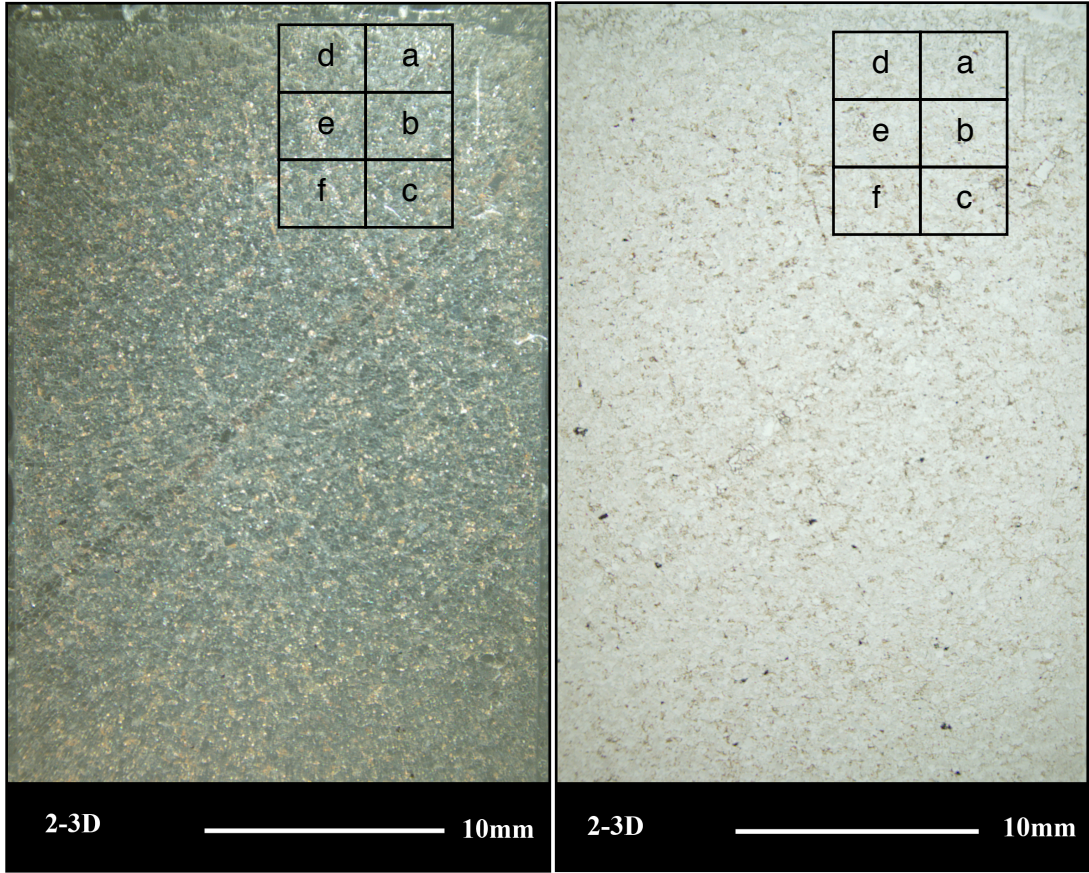


A: 2-3APass1

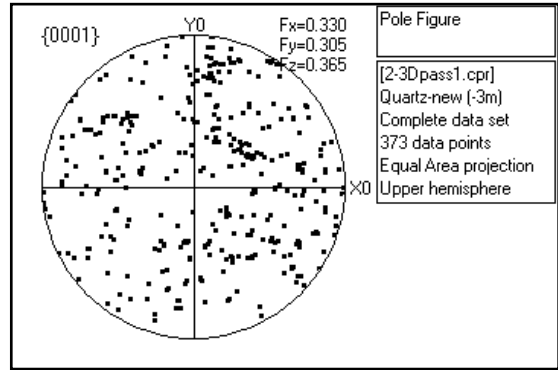
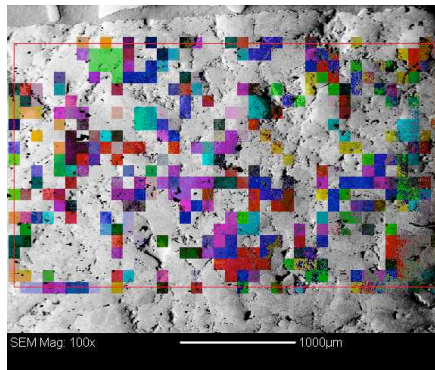


A: 2-3APass2

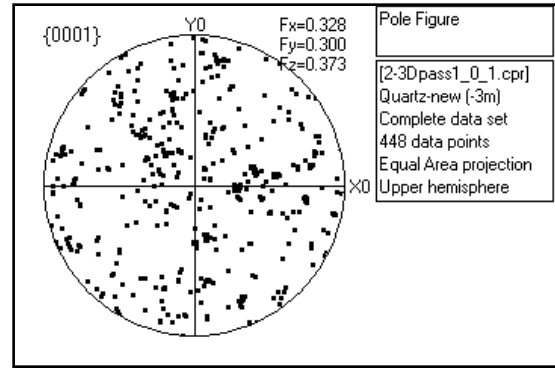
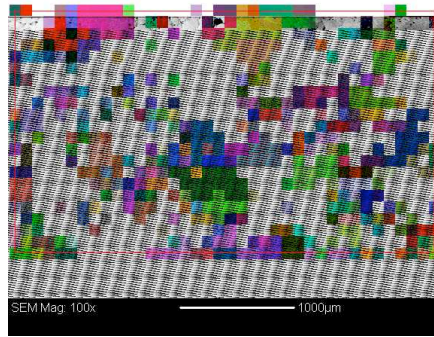




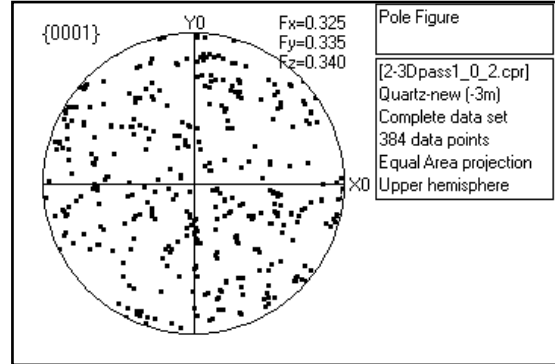
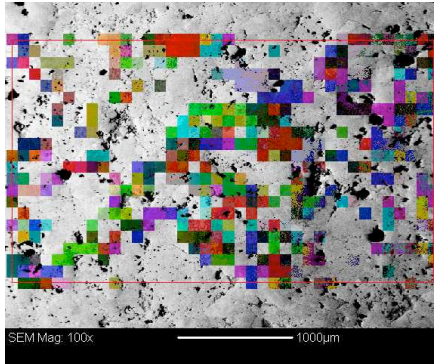
A: 2-3DPass1



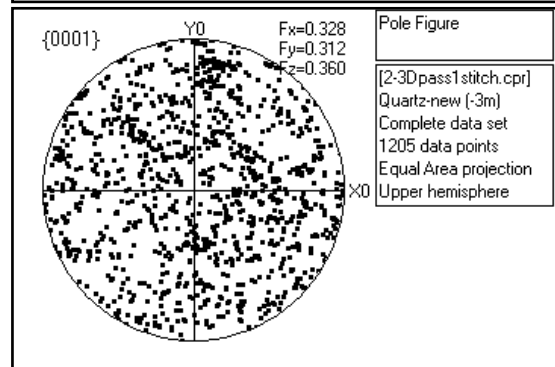
B: 2-3DPass1_0_1



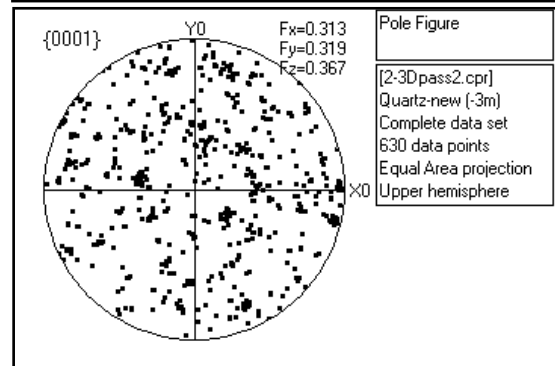
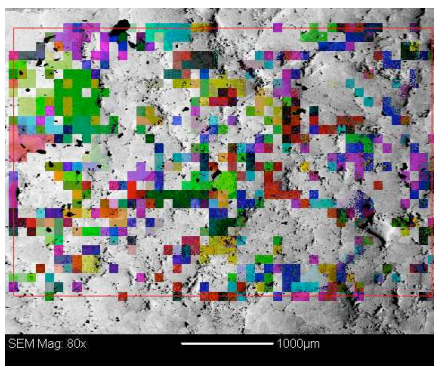
C: 2-3DPass1_0_2



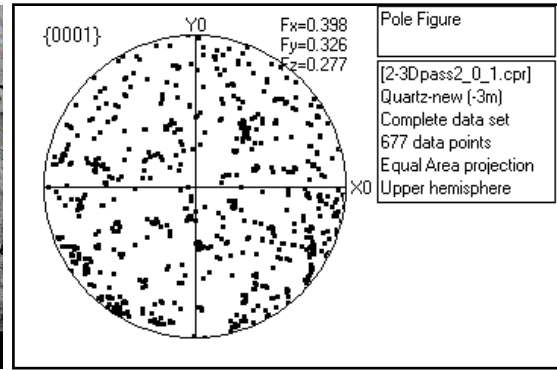
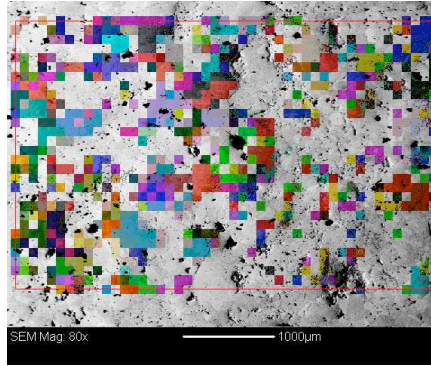
A+B+C: 2-3DPass1, 2-3DPass1_0_1, and 2-3DPass1_0_2



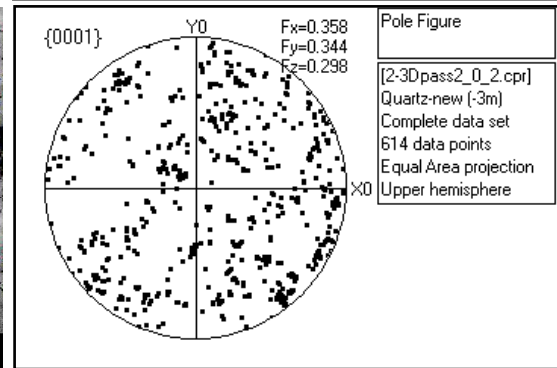
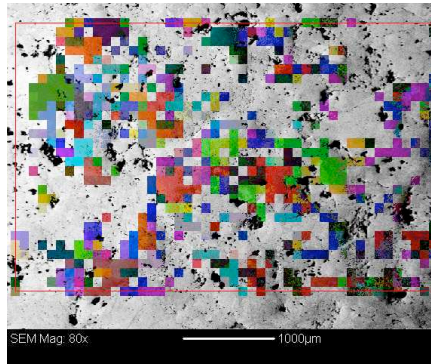
D: 2-3DPass2



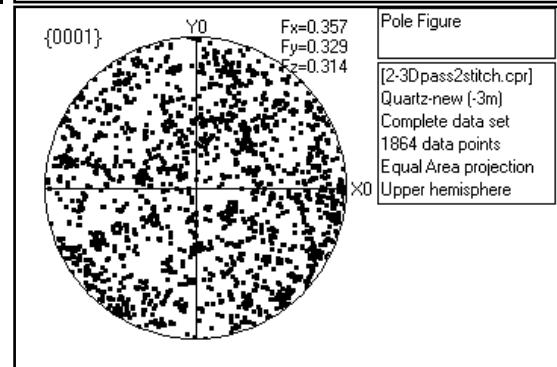
E: 2-3DPass2_0_1

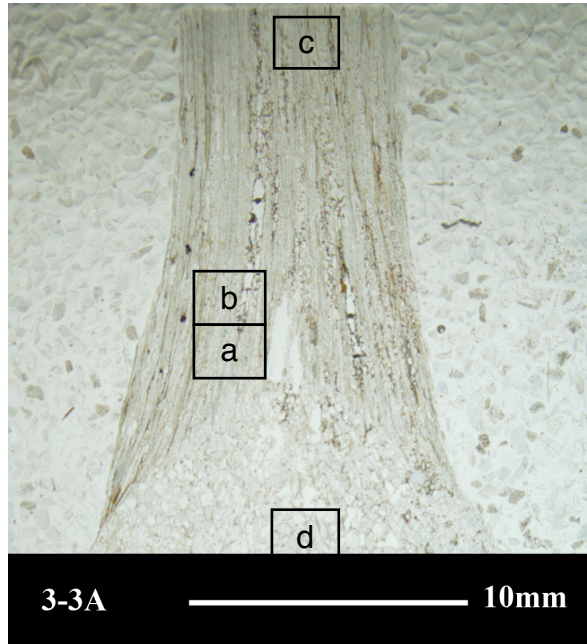
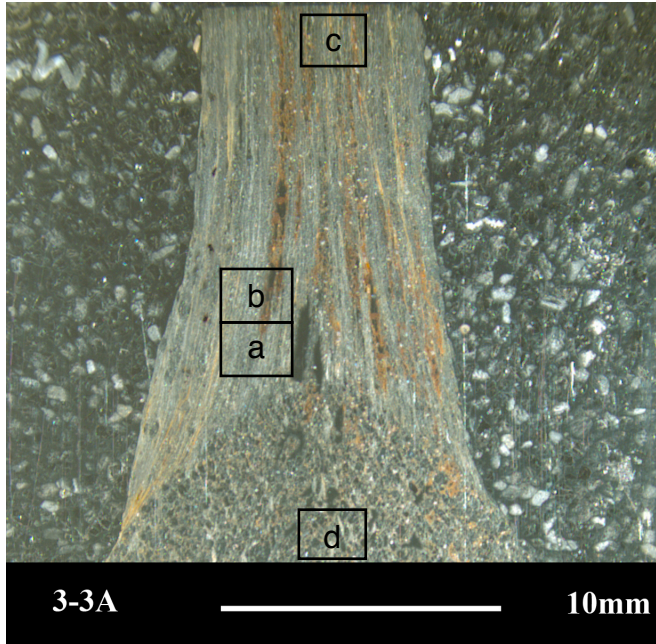


E: 2-3DPass2_0_2

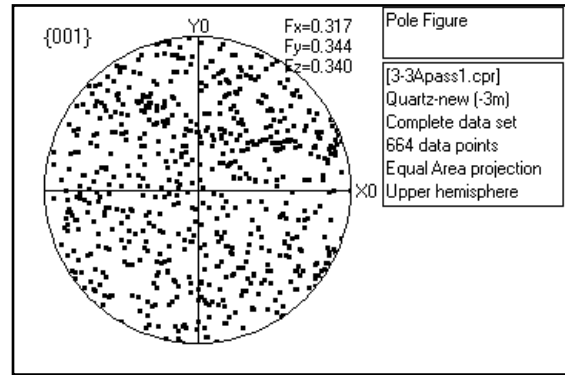
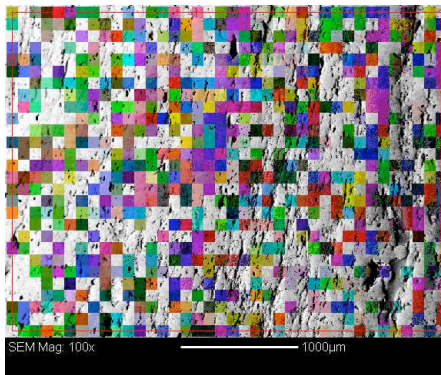


D+E+F: 2-3DPass2, 2-3DPass2_0_1, and 2-3DPass2_0_2

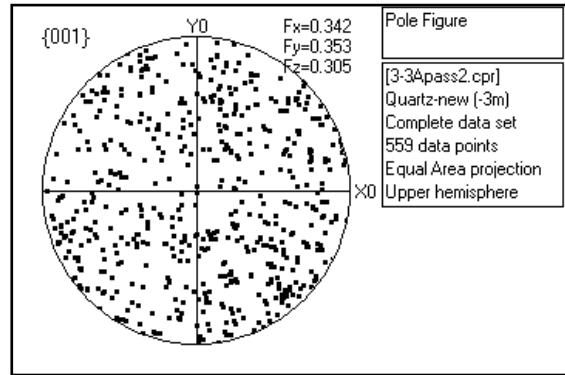
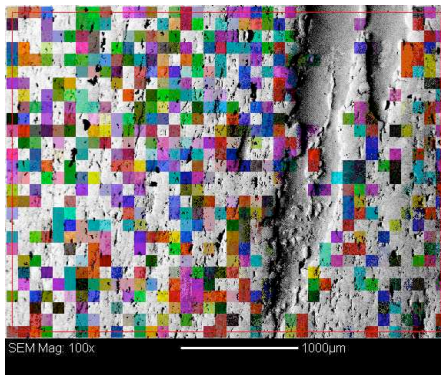




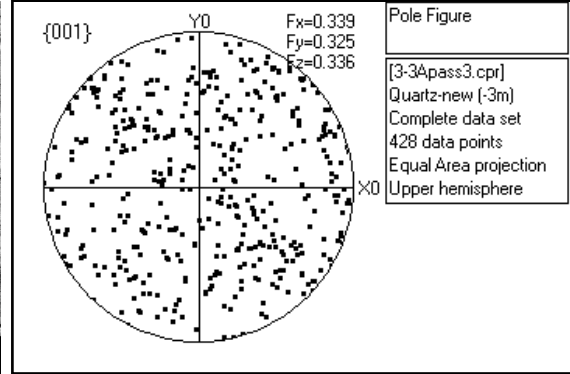
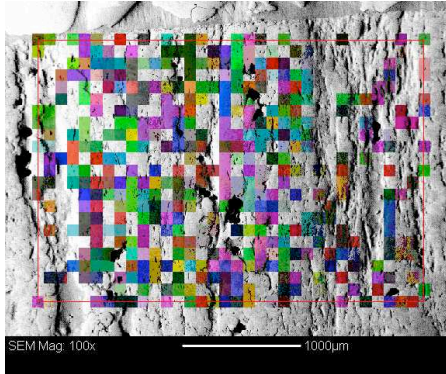
A: 3-3APass1



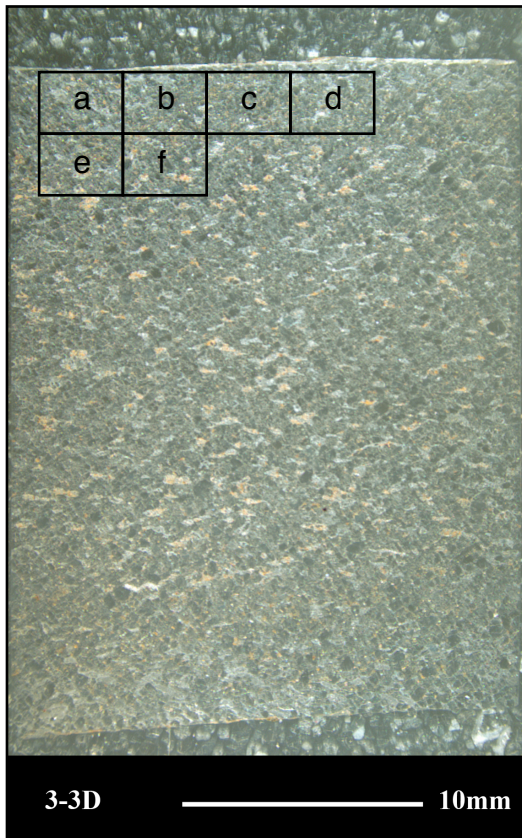
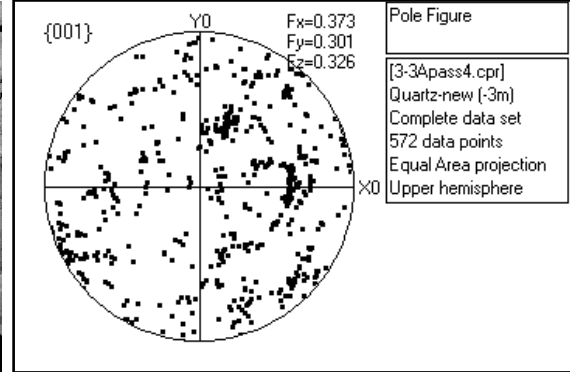
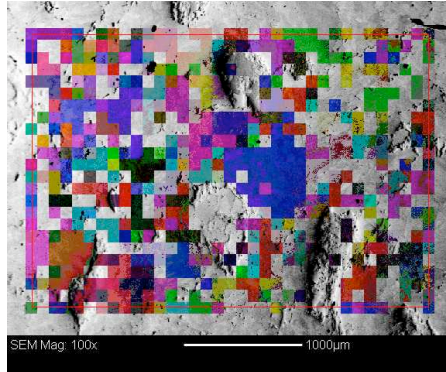
B: 3-3APass2



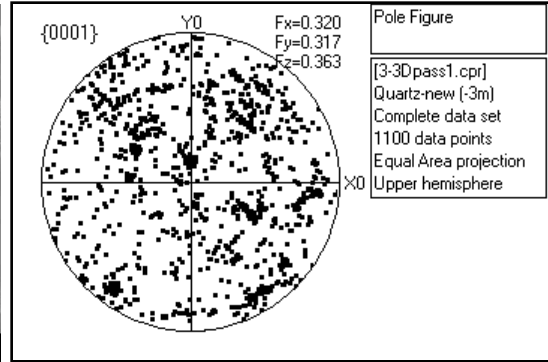
C: 3-3APass3



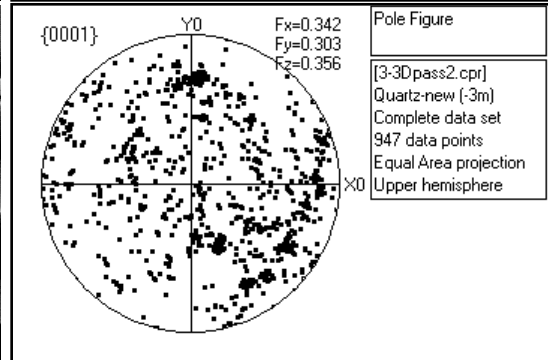
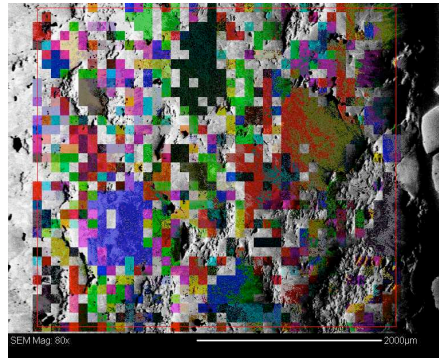
D: 3-3APass4



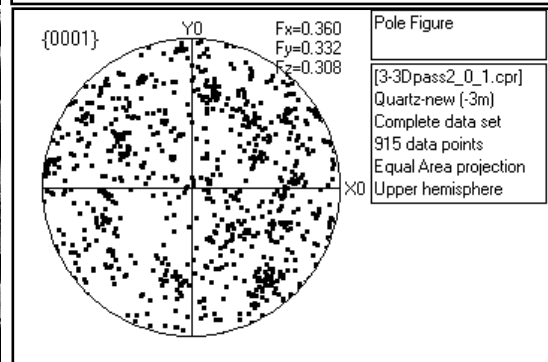
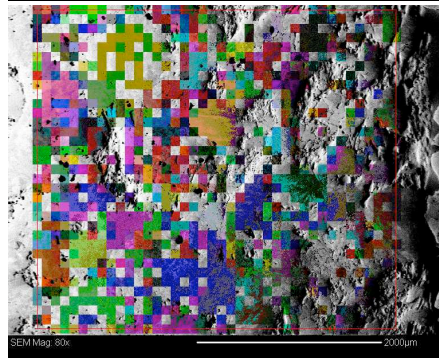
A: 3-3DPass1



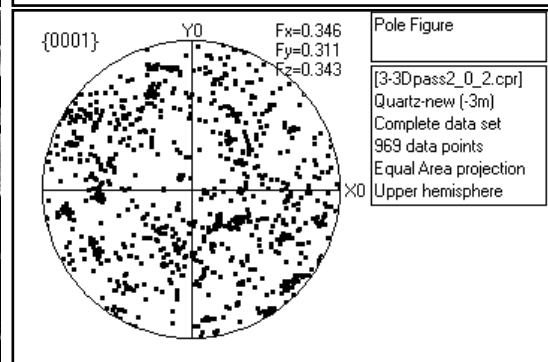
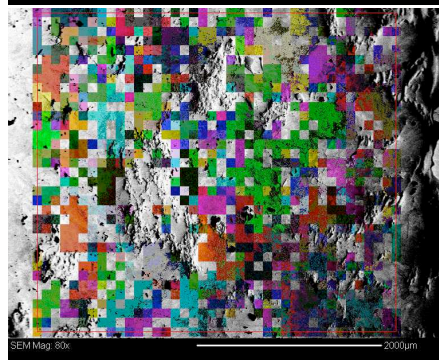
B: 3-3DPass2



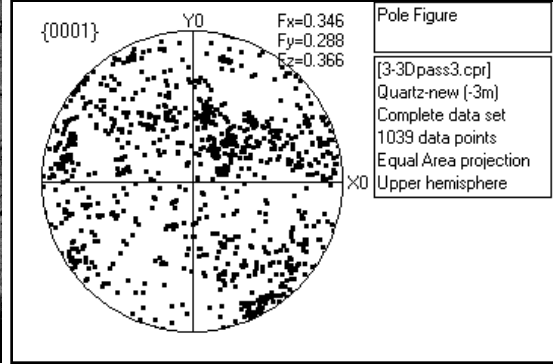
C: 3-3DPass2_0_1



D: 3-3DPass2_0_2



D: 3-3DPass3



D: 3-3DPass3_0_1

