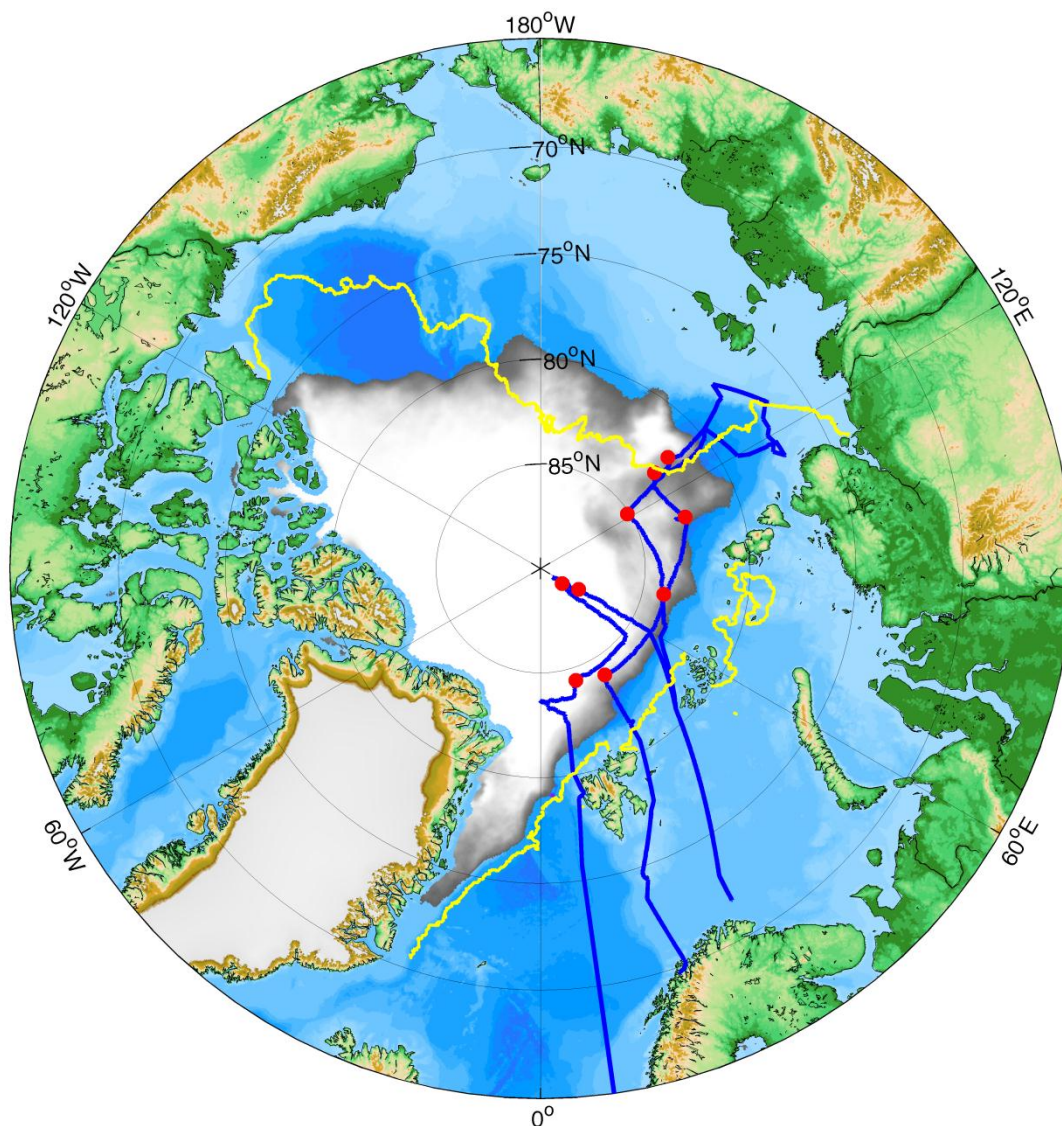


ICESTATIONS DURING ARKXXVII/3 - ICEARC 2012

FLOE COORDINATE SYSTEMS AND METEOROLOGICAL DATA



Christian Katlein^a, Marcel Nicolaus^a, Martin Schiller^a, Larysa Istomina^b, Scott Sørensen^c,
Stefan Hendricks^a, Thomas Krumpen^a, Ben Lange^a

^a Alfred-Wegener-Institut, Bremerhaven

^b Institute for Environmental Physics, Bremen

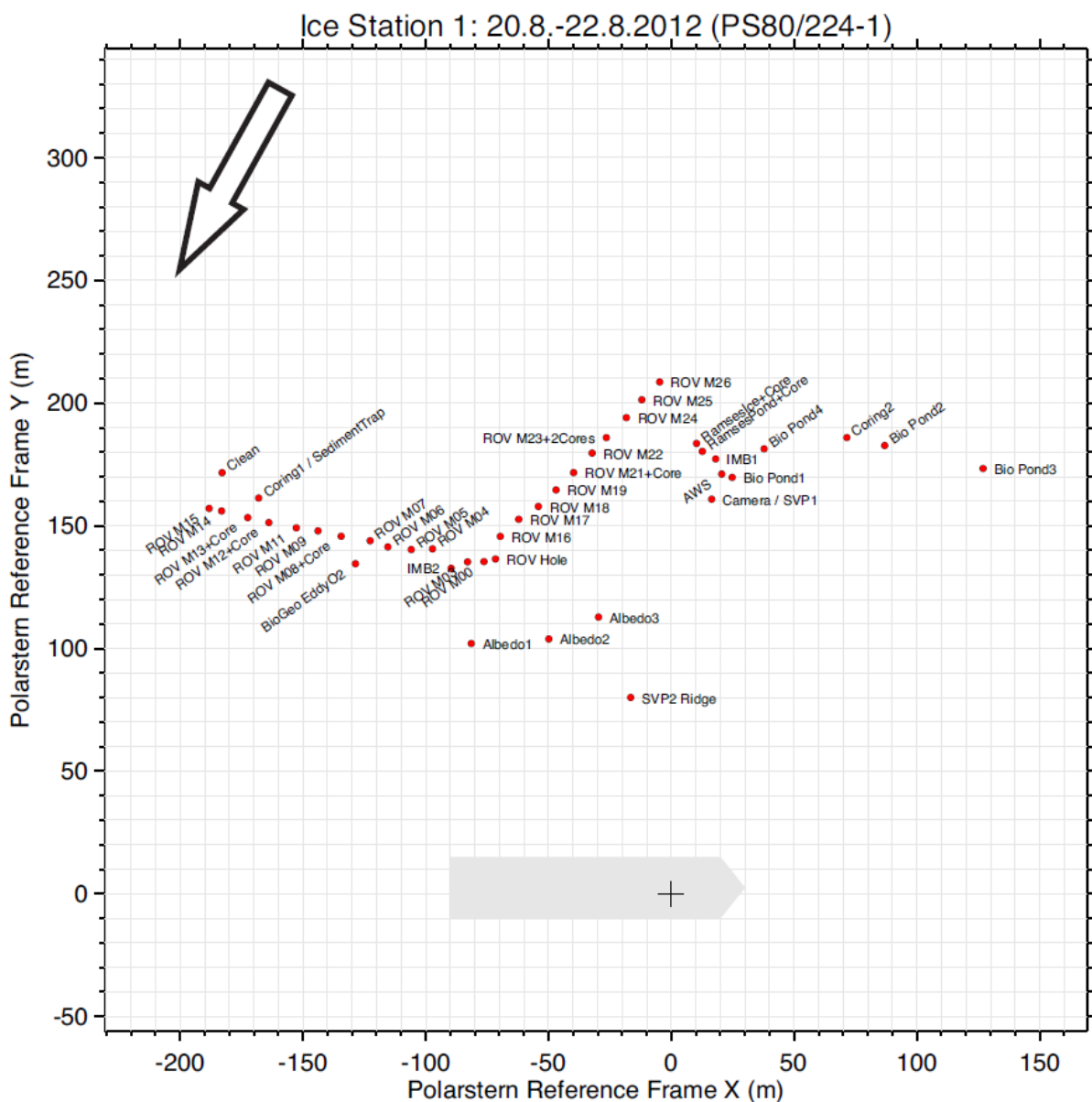
^c University of Delaware

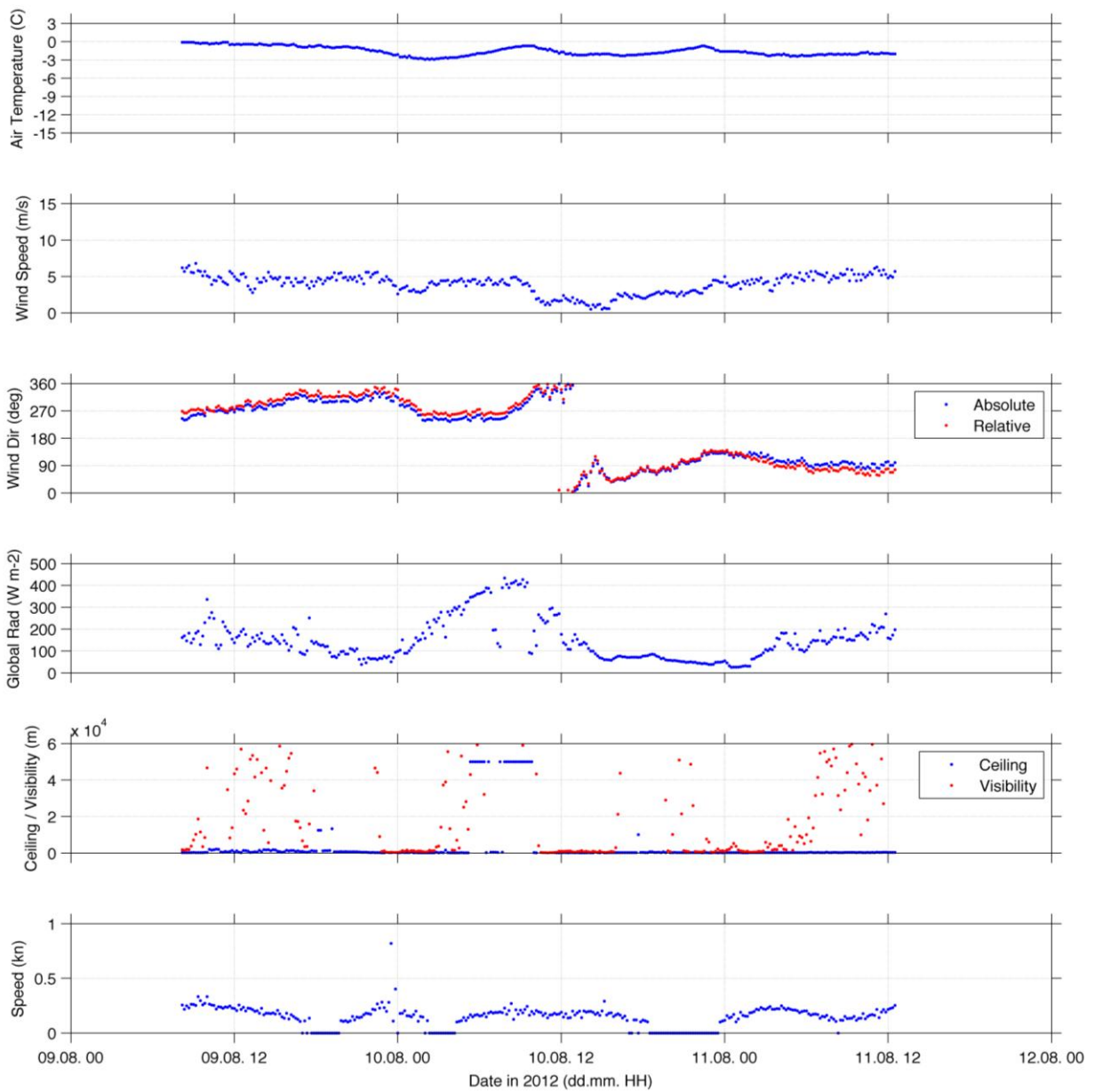
INTRODUCTION

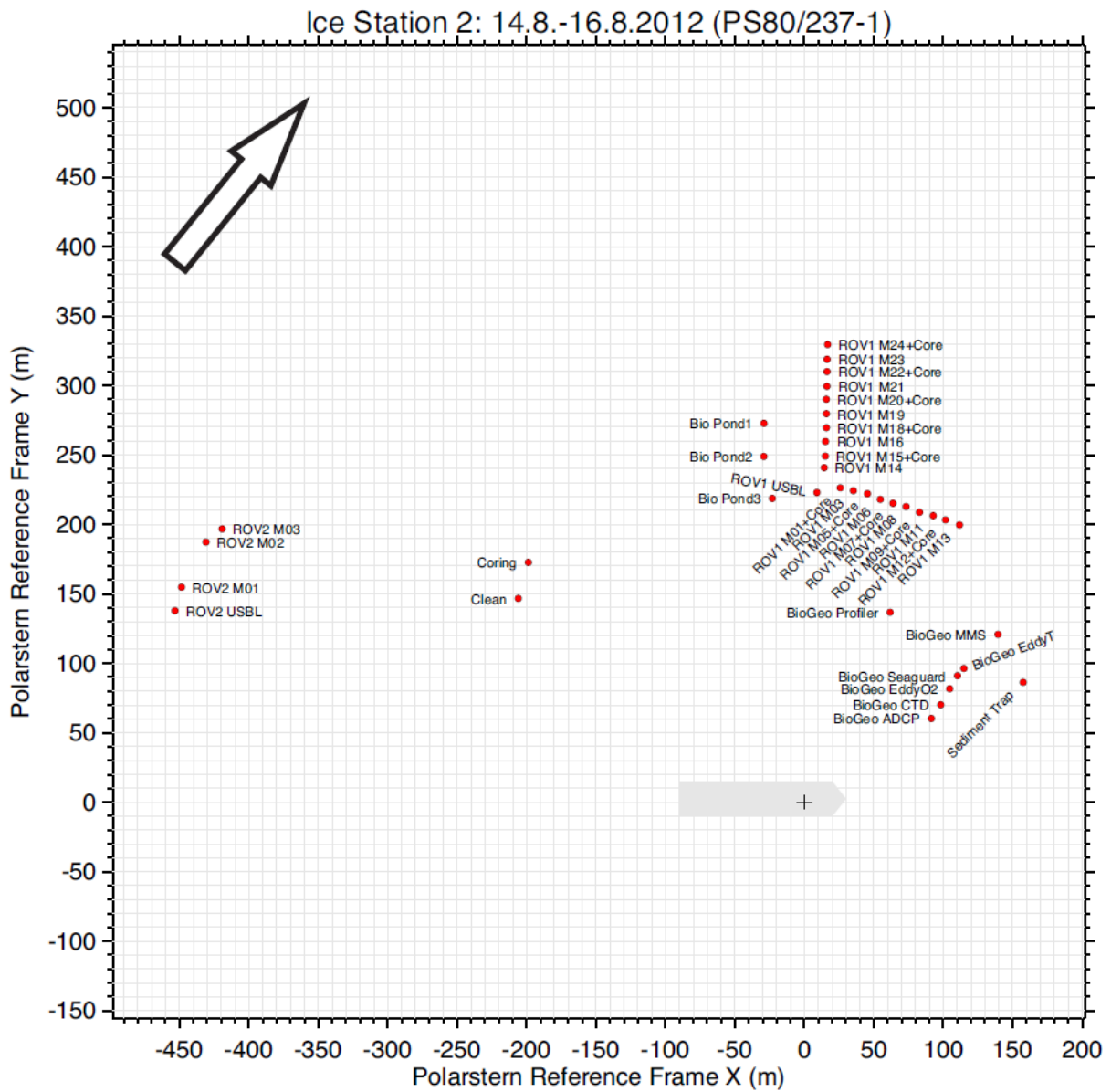
During all ice stations on ARK-27/3 (IceArc) a local floe coordinate system was established. This floe fixed coordinate system enabled the use of common coordinates for all different measurements on the floe. The coordinate system was used to describe the position of each measurement in the PANGAEA database. Origin of the coordinate system is the Trimble 1 GPS Antenna of *RV Polarstern*, with the x-axis aligned parallel to the ship's heading. In the following overview plots of all recorded positions are shown for each ice station. All taken measurements were documented in (Boetius et al. 2012, <http://doi.pangaea.de/10.1594/PANGAEA.792734>).

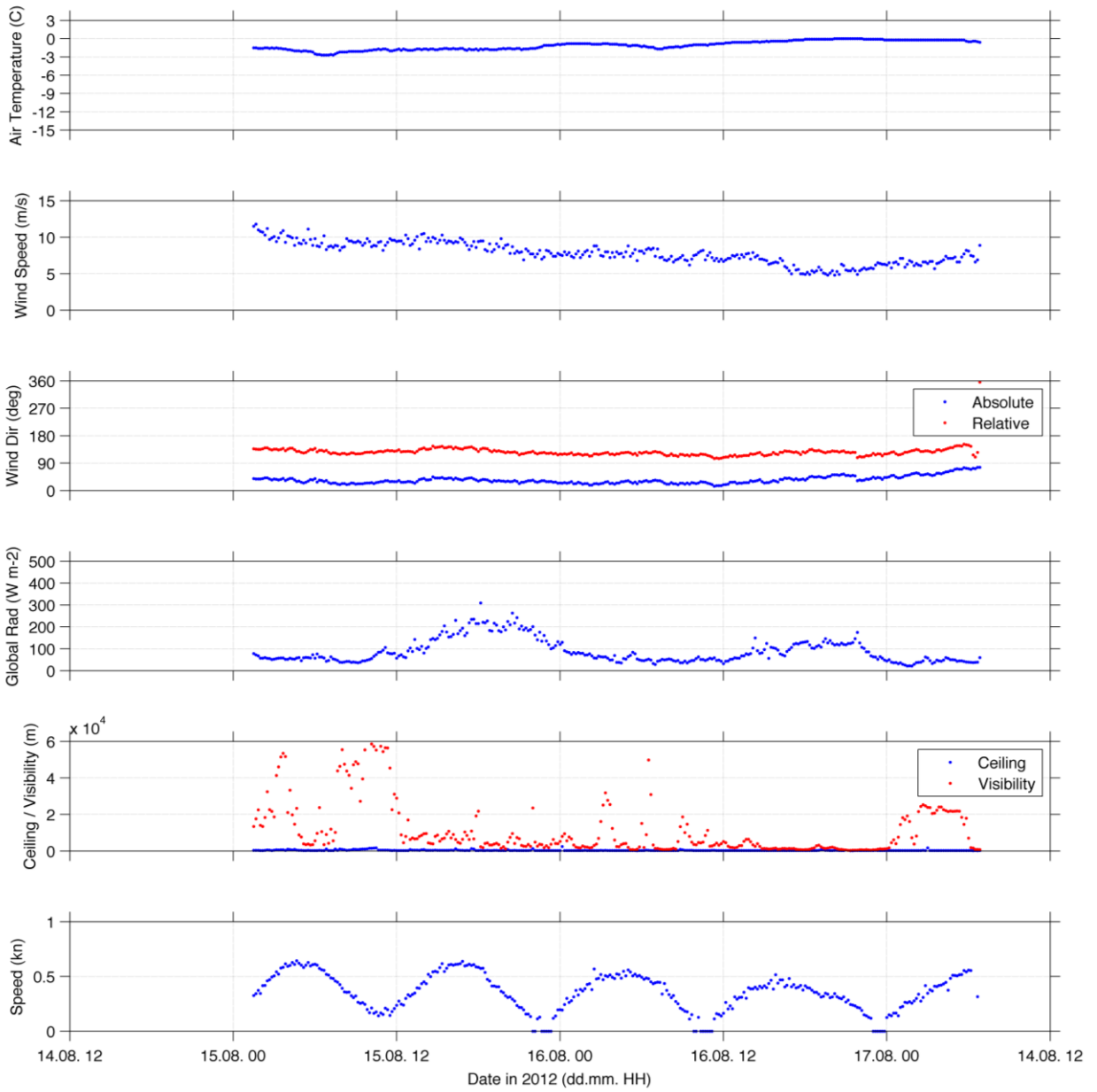
To ease data interpretation, we show also extracted plots for the times of ice stations from the meteorological data routinely acquired during the cruise. The complete dataset is available from (König-Langlo 2012, <http://doi.pangaea.de/10.1594/PANGAEA.802840>).

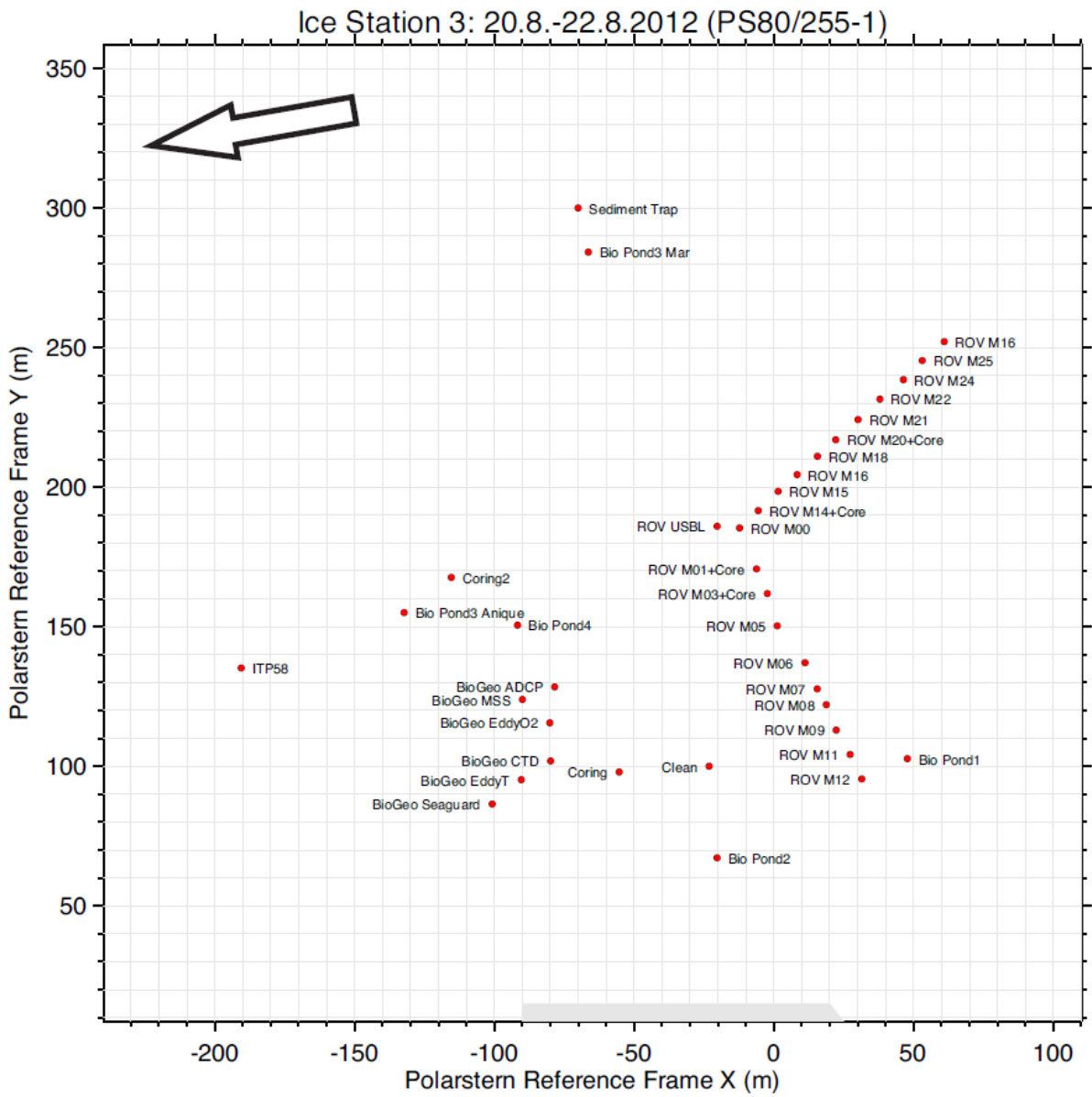
ICE-1

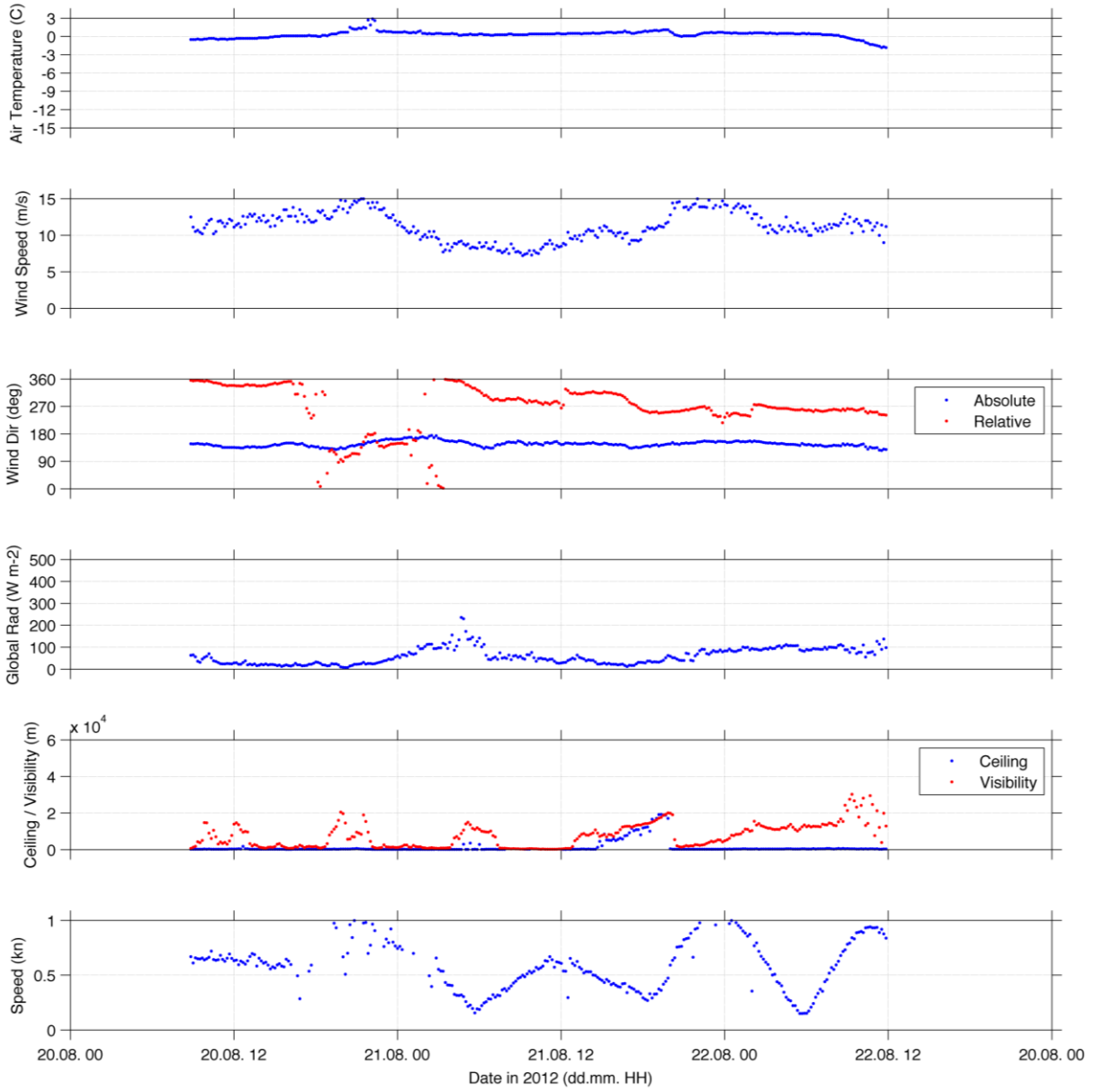


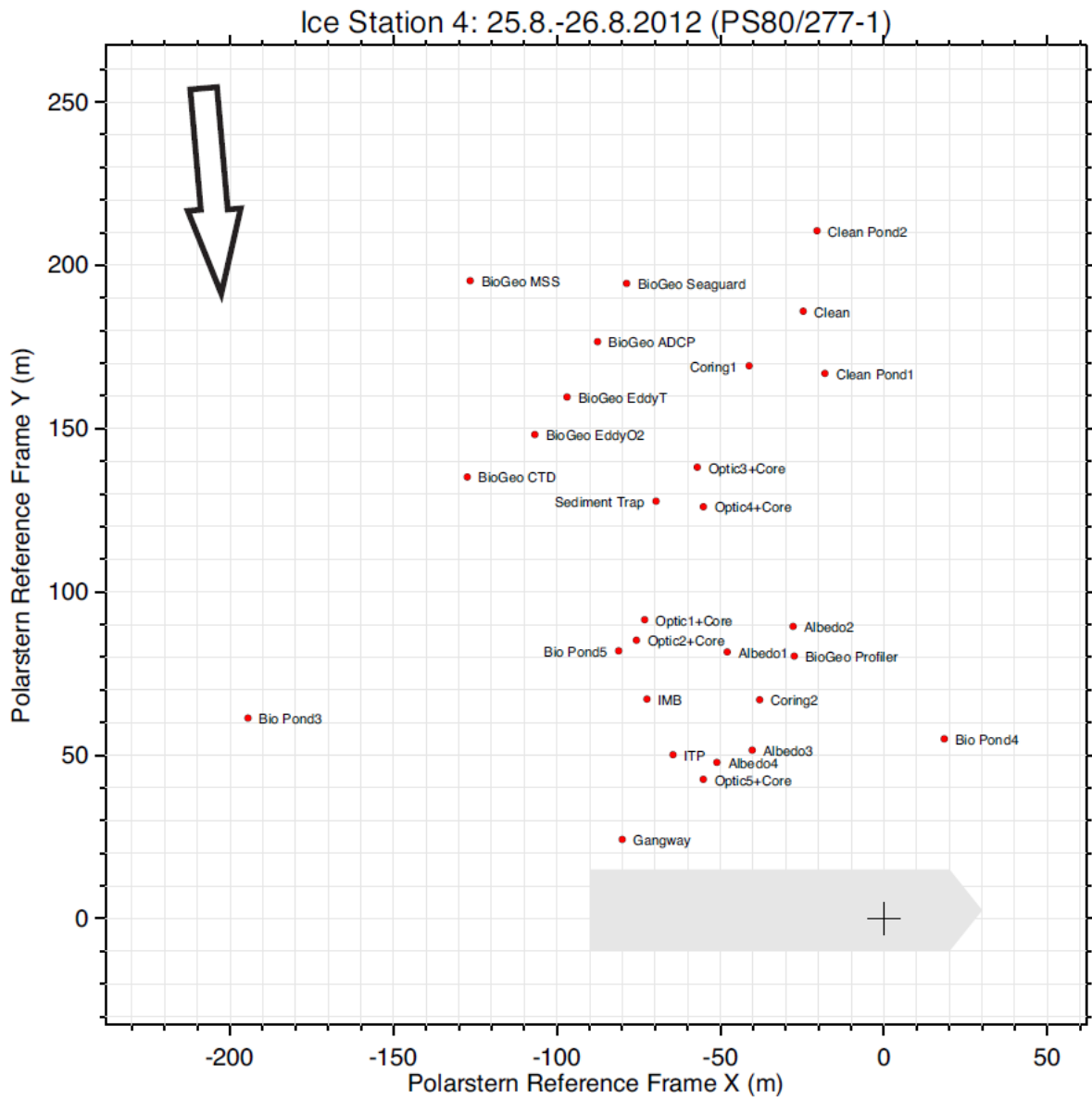


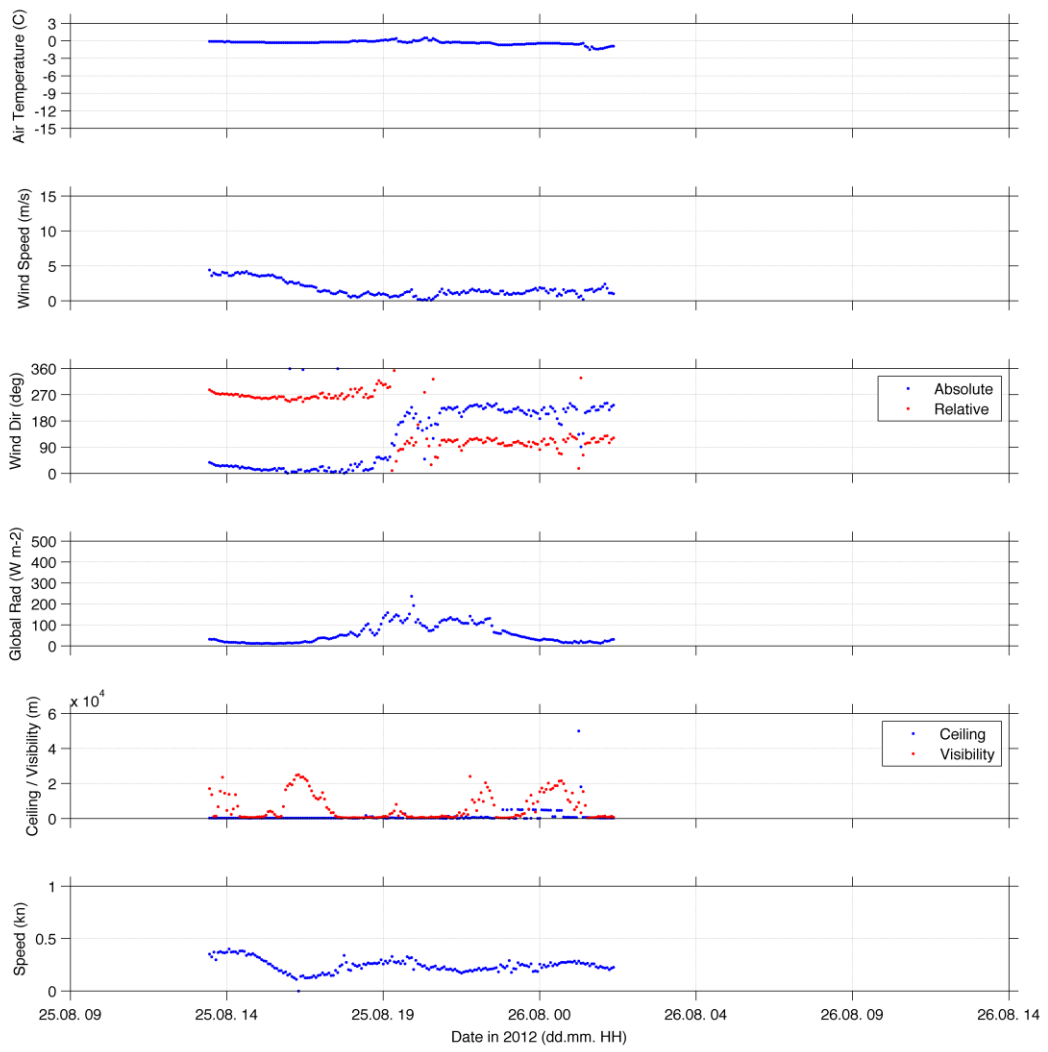


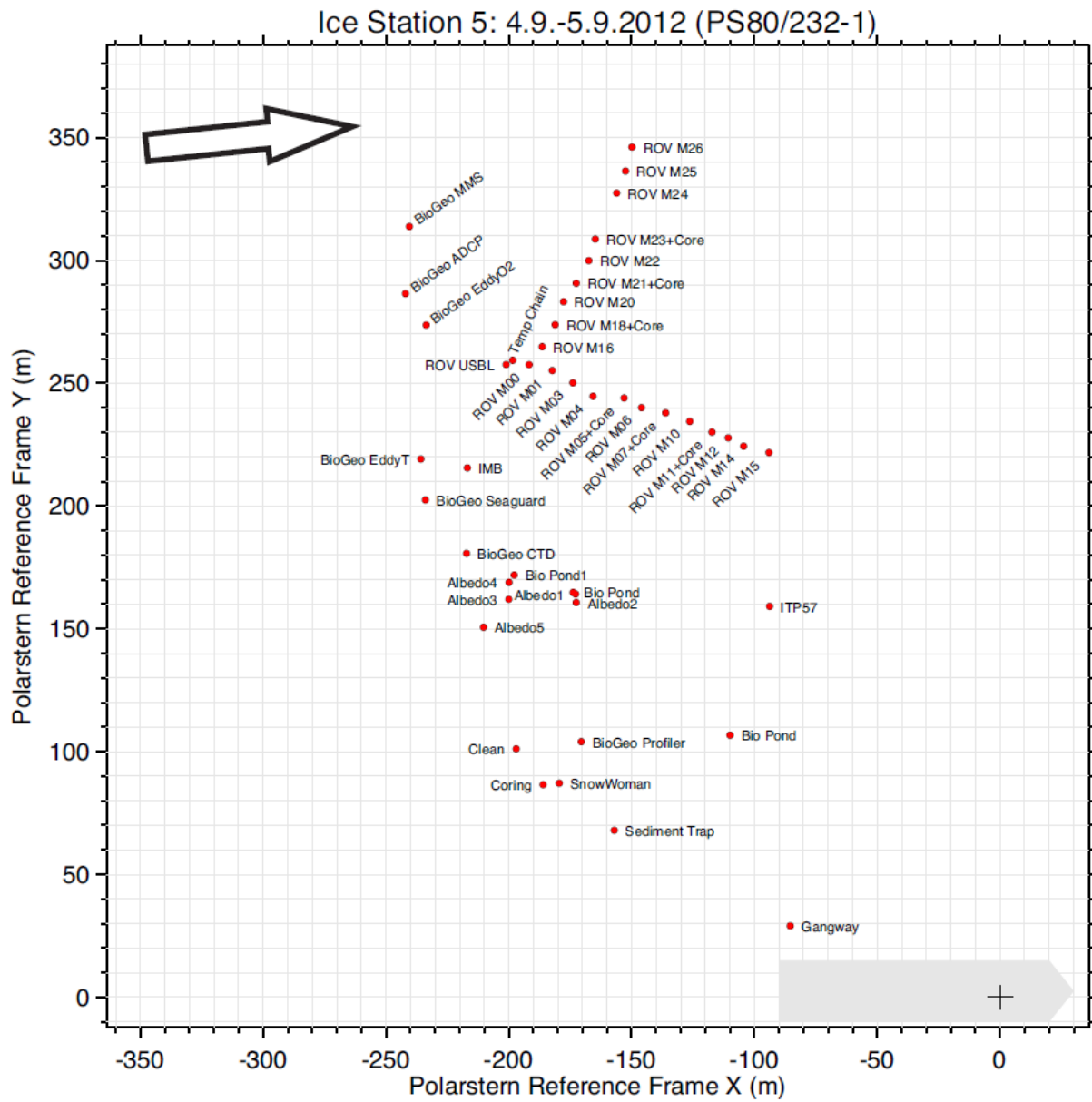


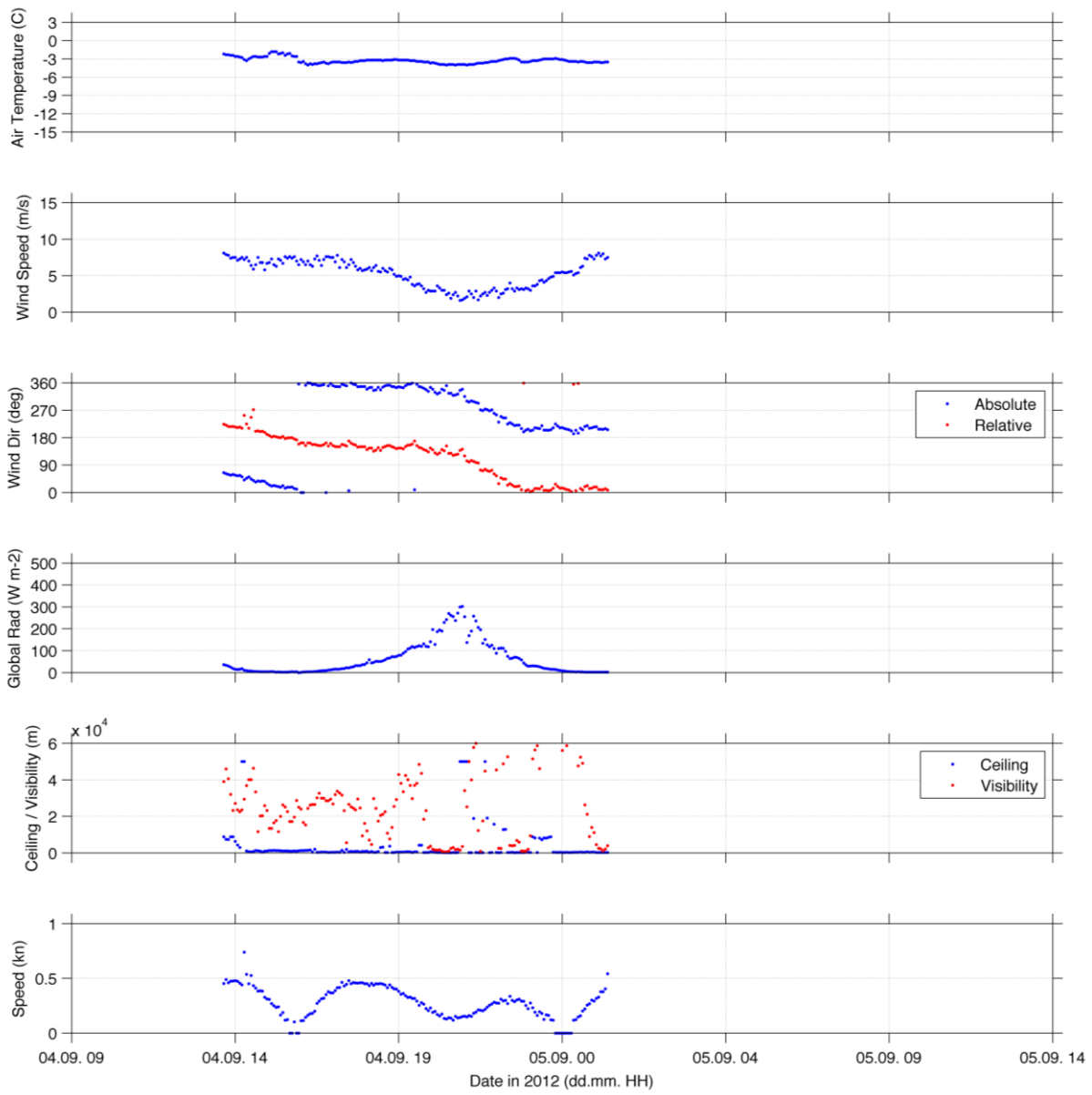


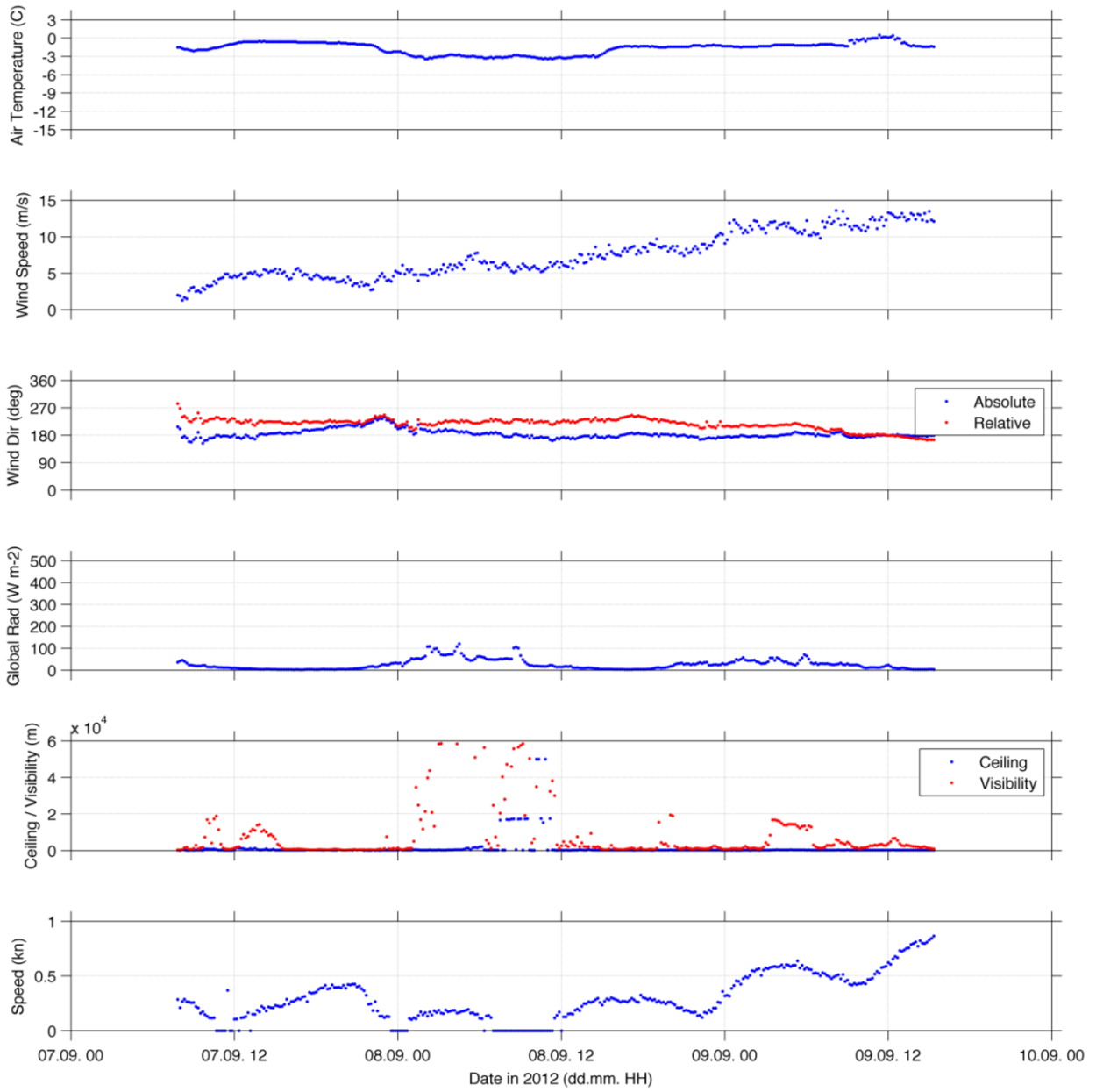


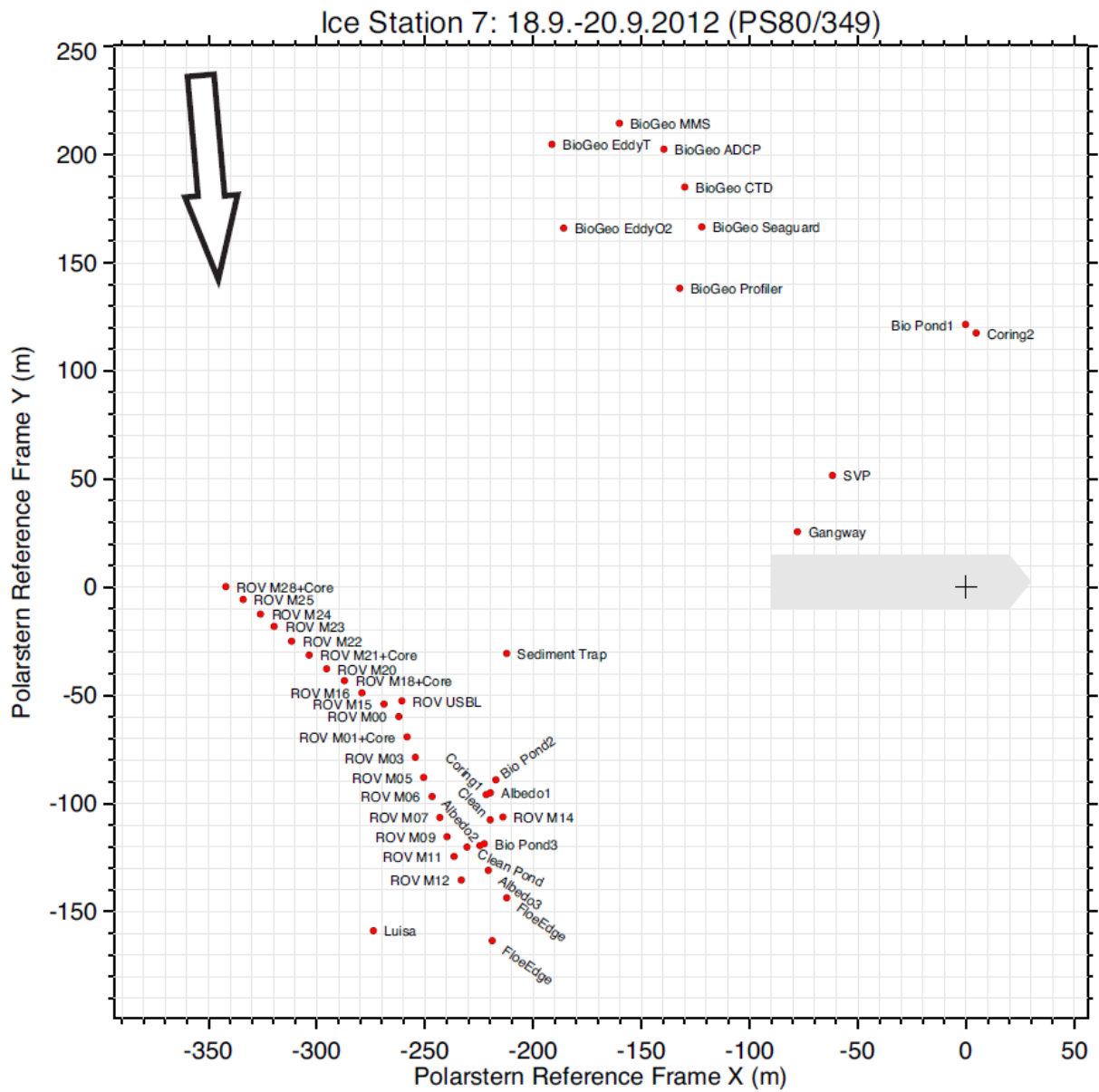


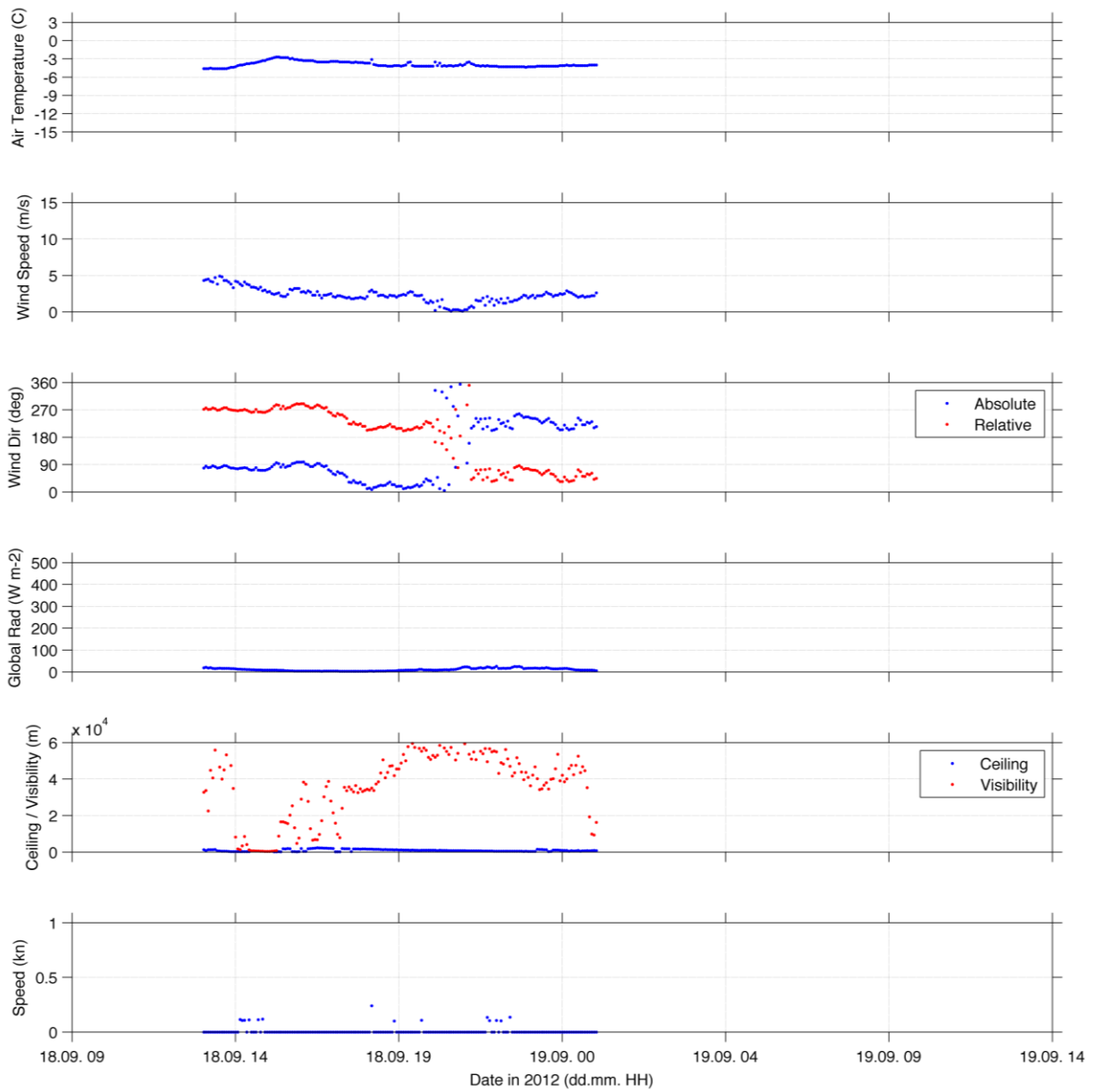


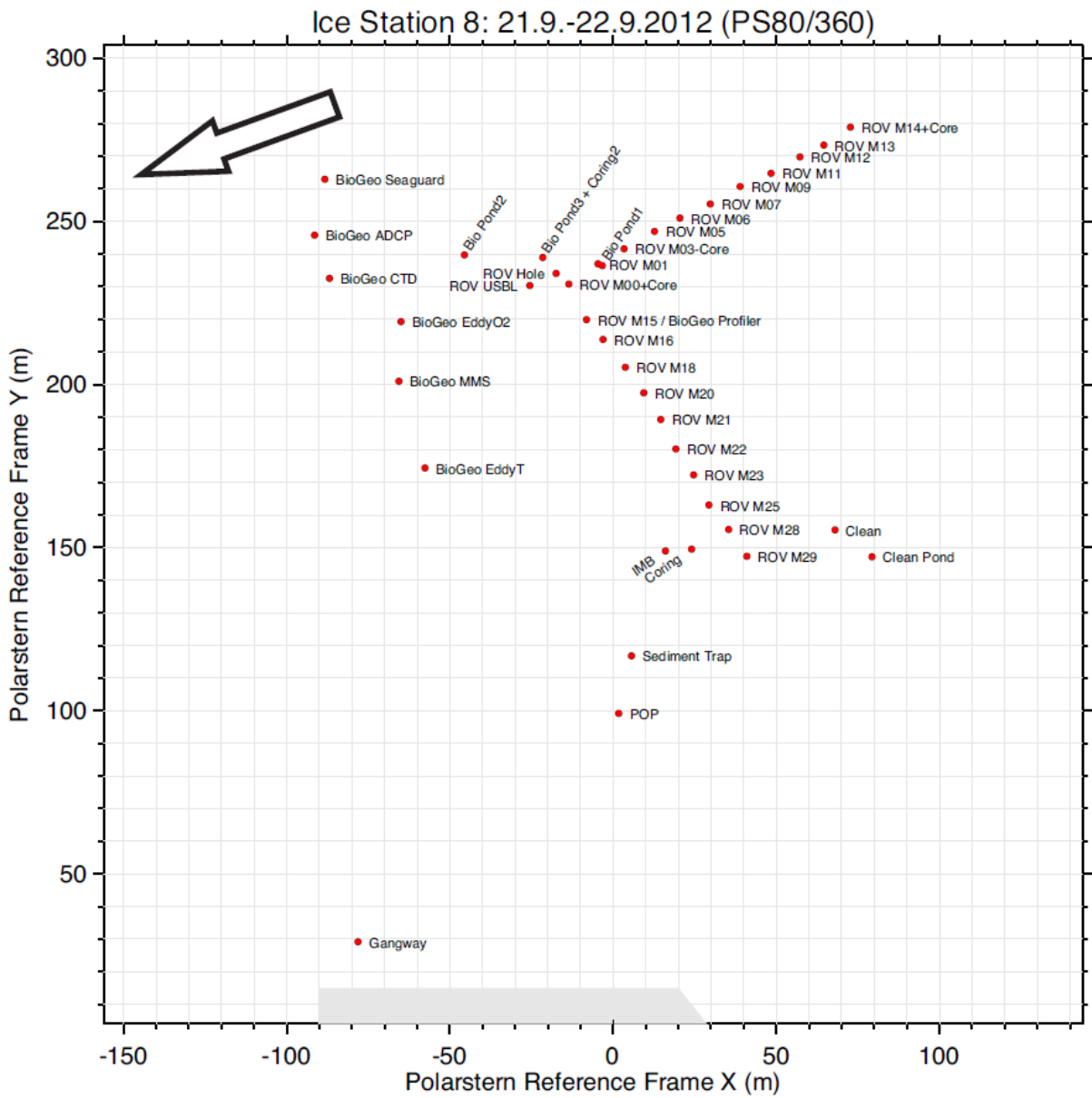


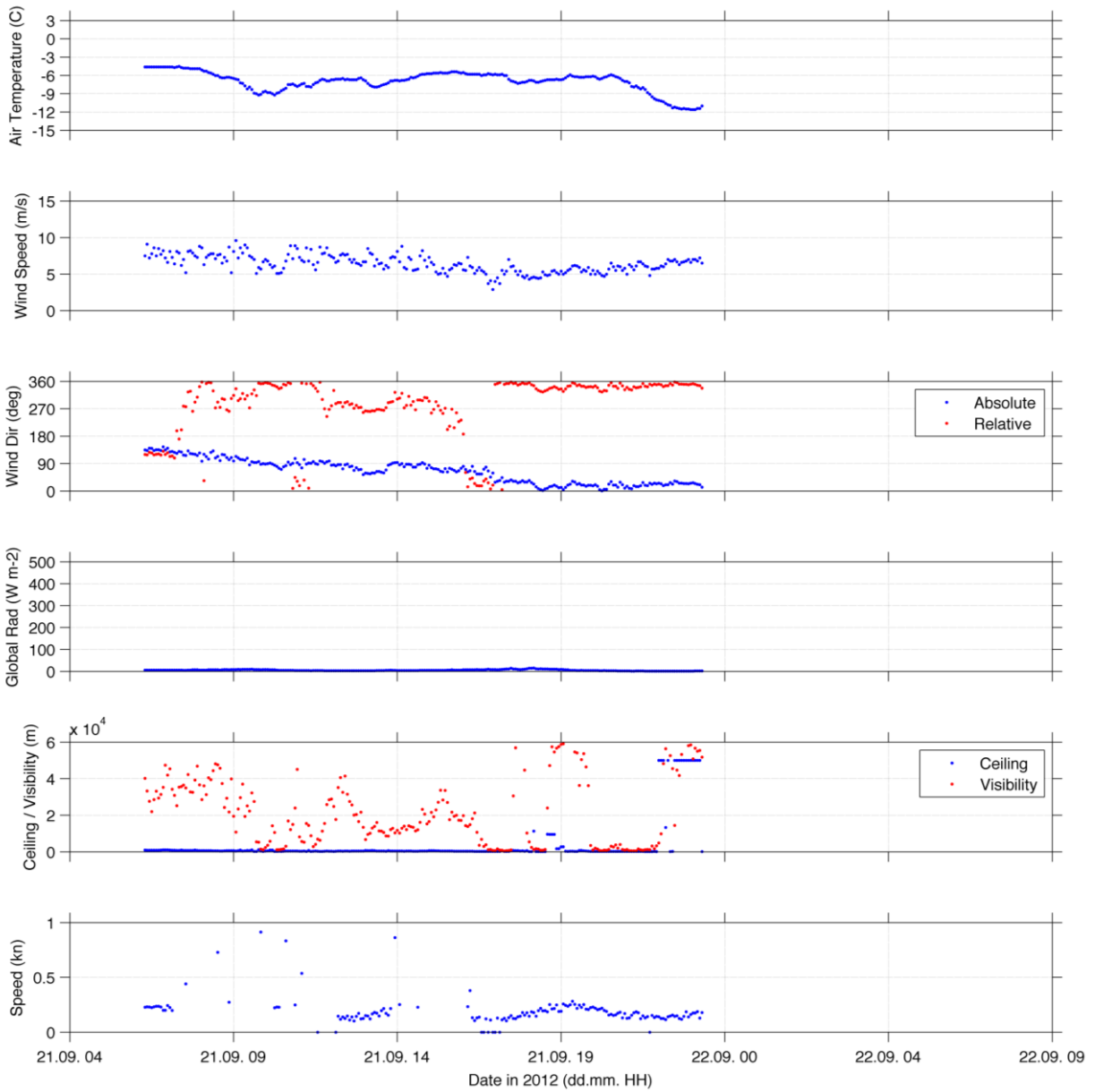


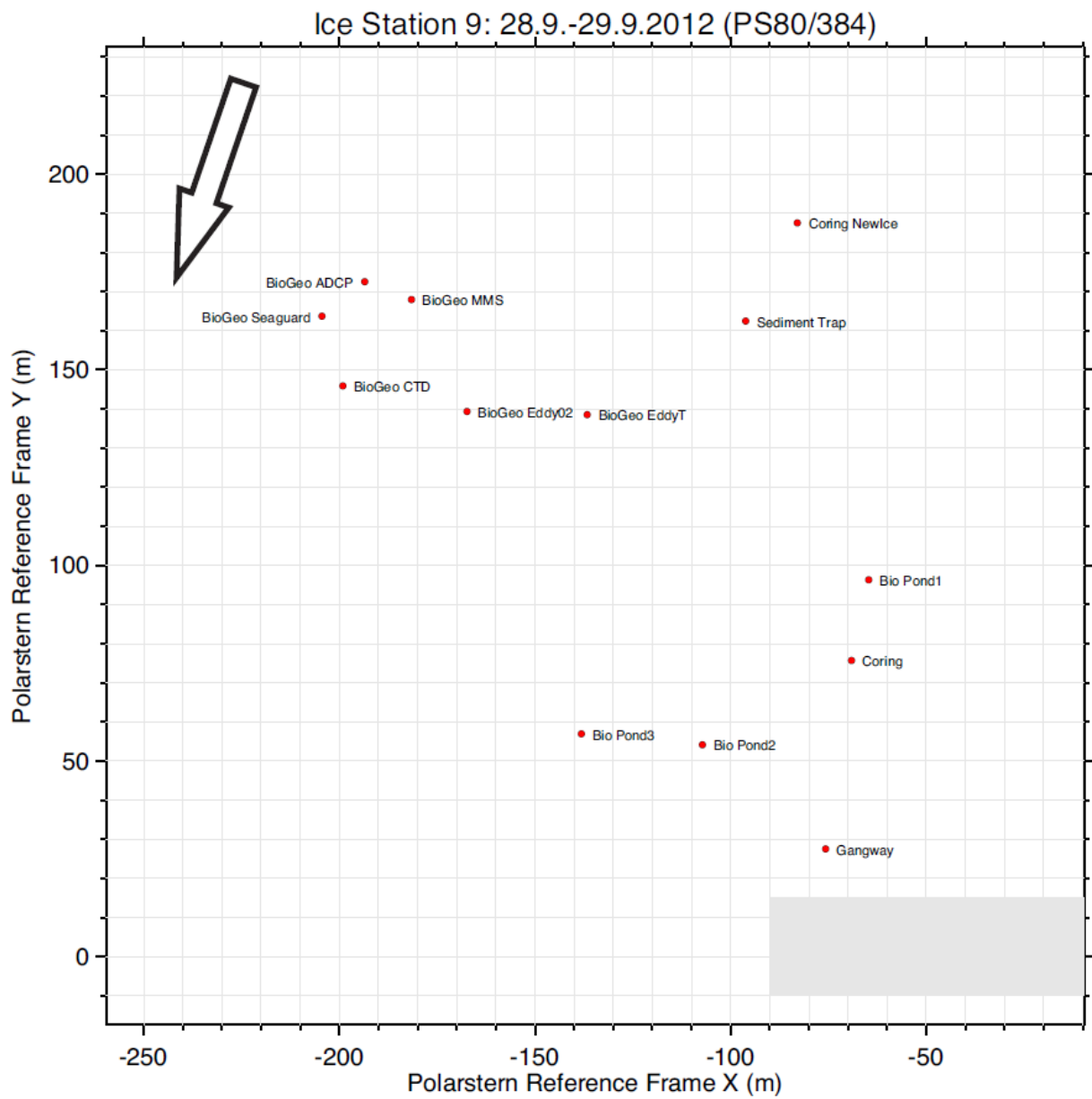












Ice Station 9: 28.9.-29.9.2012 (PS80/384) ROV Station

