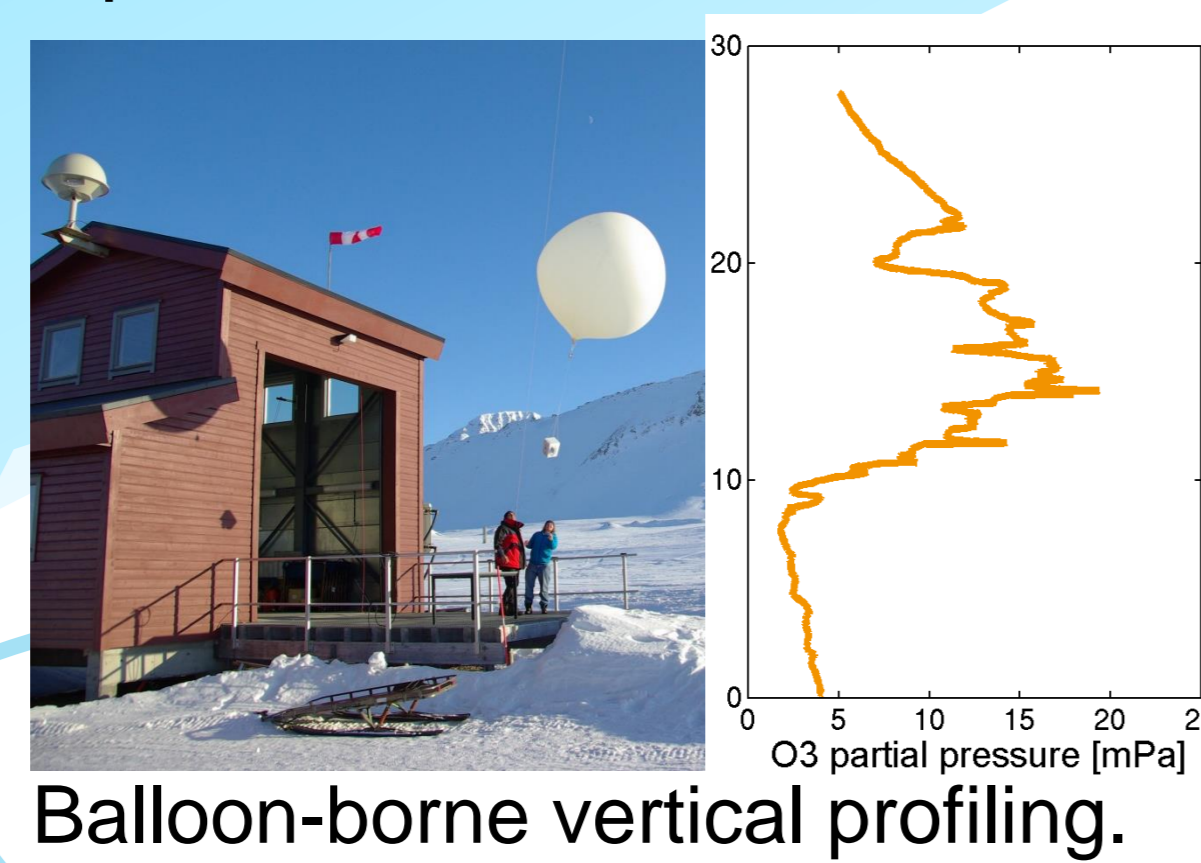
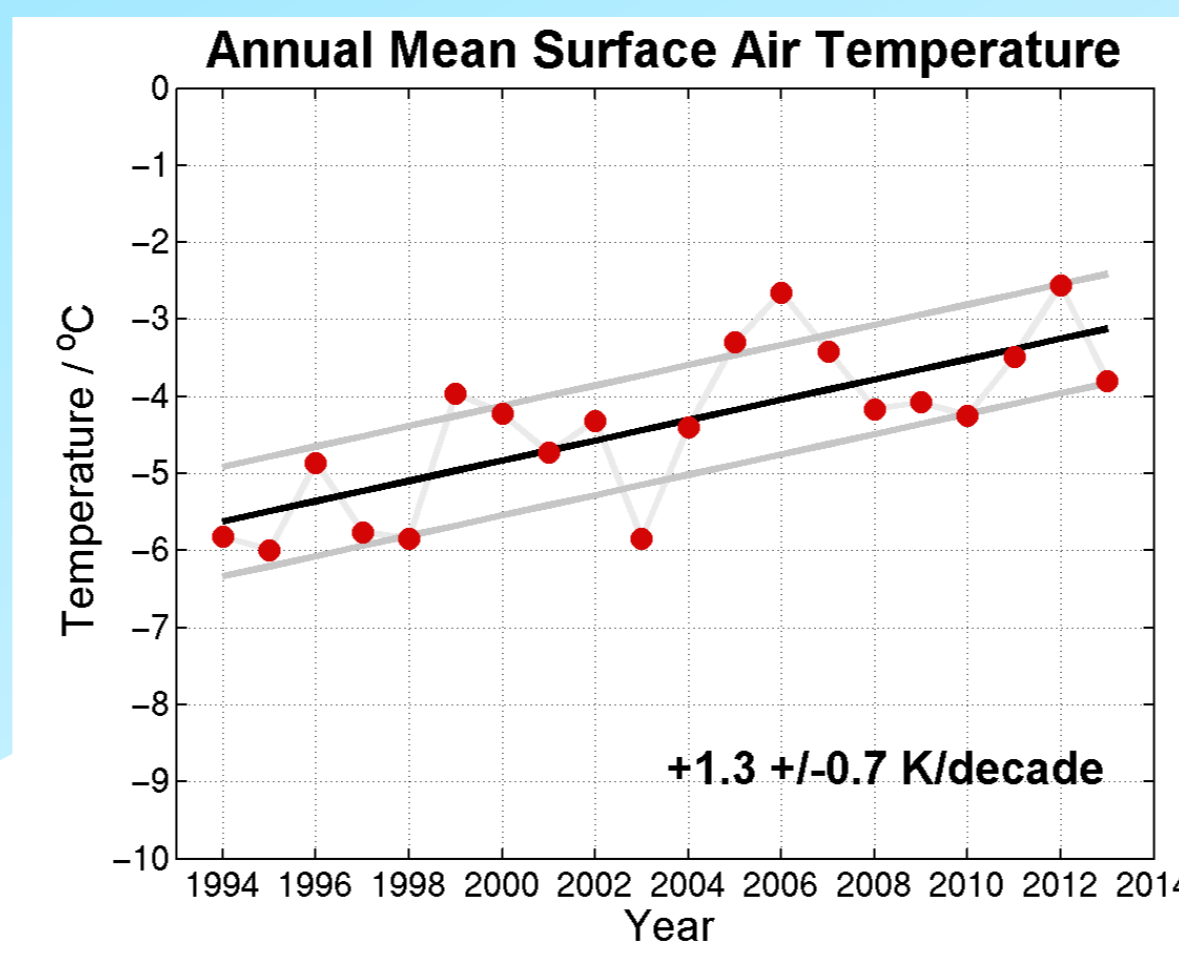


- ▶ AWIPEV is a joint French – German base collaborating with Dutch NWO
- ▶ Research at the AWIPEV Base covers a large field of modern polar research, including both long-term and short-term projects of atmospheric research, marine and terrestrial biology, and cryosphere research.
- ▶ Here we present long-term observatories contributing to various international networks and relevant EU projects.

[www.awipev.eu](http://www.awipev.eu)

## Atmospheric Observatory - Climate Research -

- LIDAR
- FTIR spectrometer
- Microwave radiometer
- DOAS spectrometer
- Sun & Star photometer
- UV-B spectrometer



Balloon-borne vertical profiling.

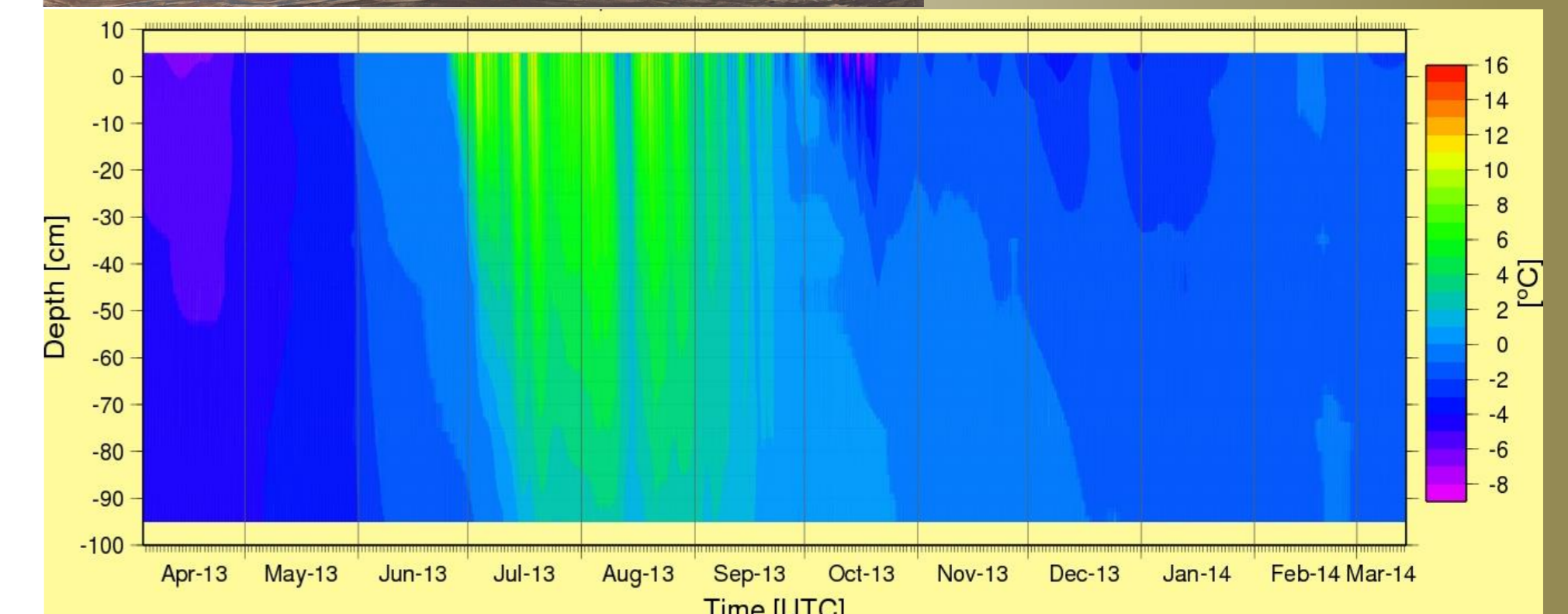


Meteorol. tower.

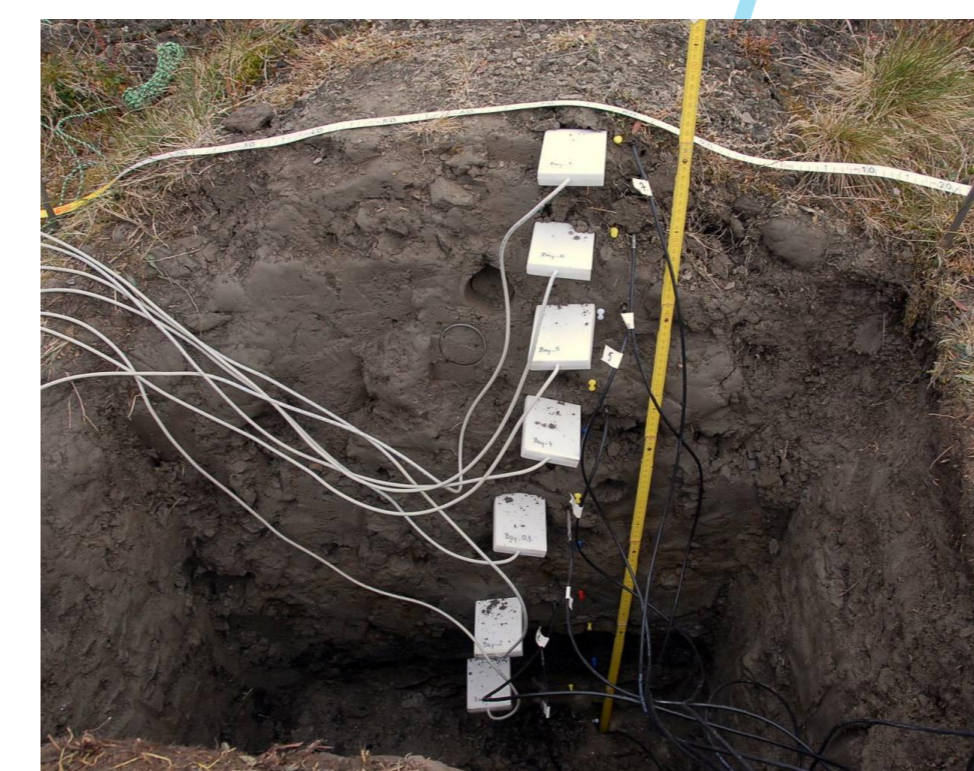
## Permafrost Observatory - Geoscience -



Bayelva station



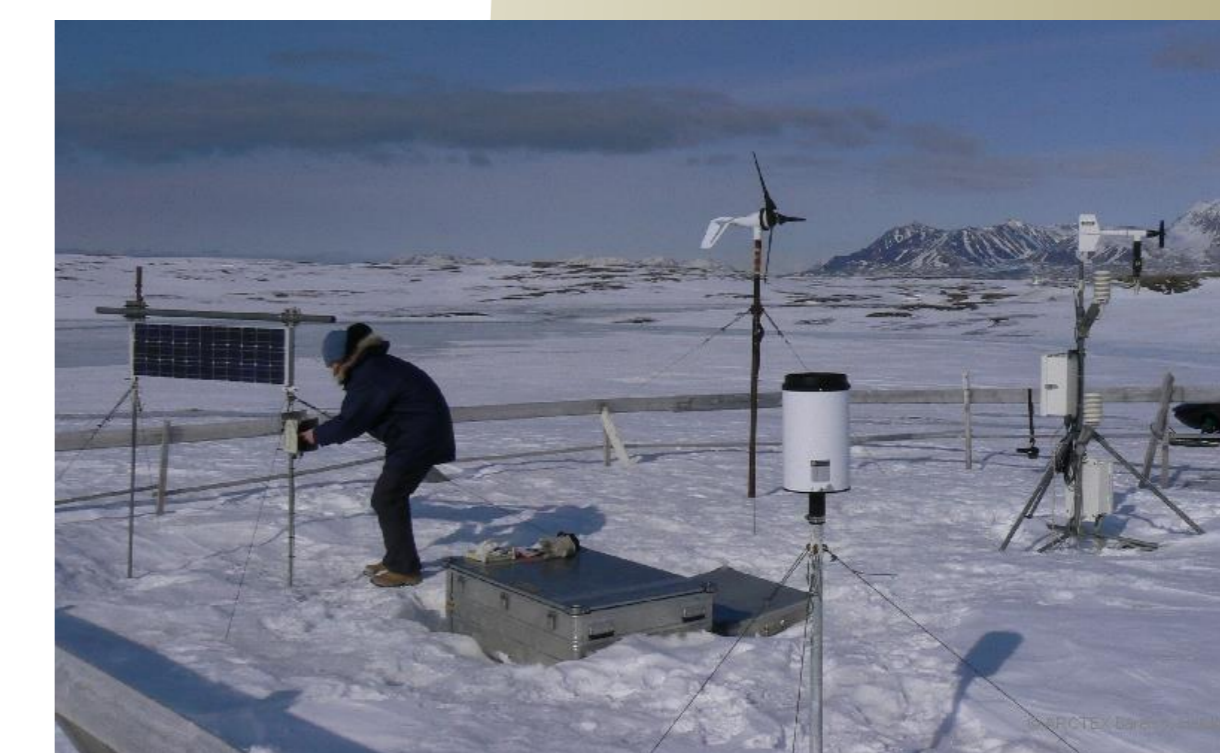
Annual cycle of soil temperature in the active layer.



Thermistors in the soil measure temperature and humidity profiles.



Eddy covariance system.



Further measurements: snow depth, rainfall, radiation and meteorological parameters.

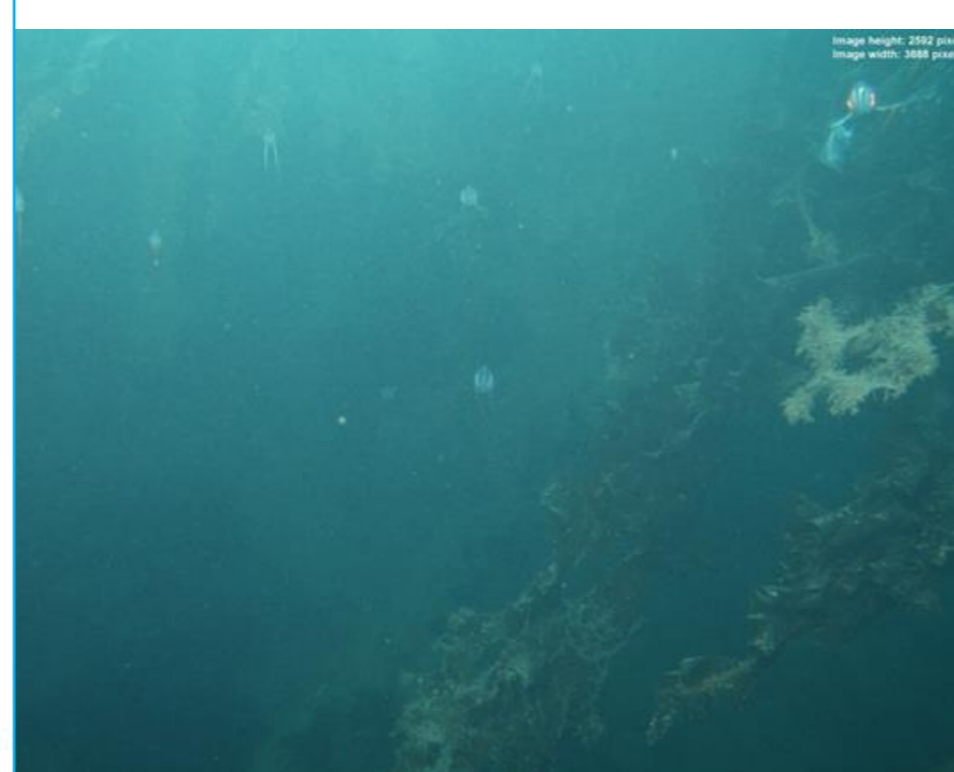
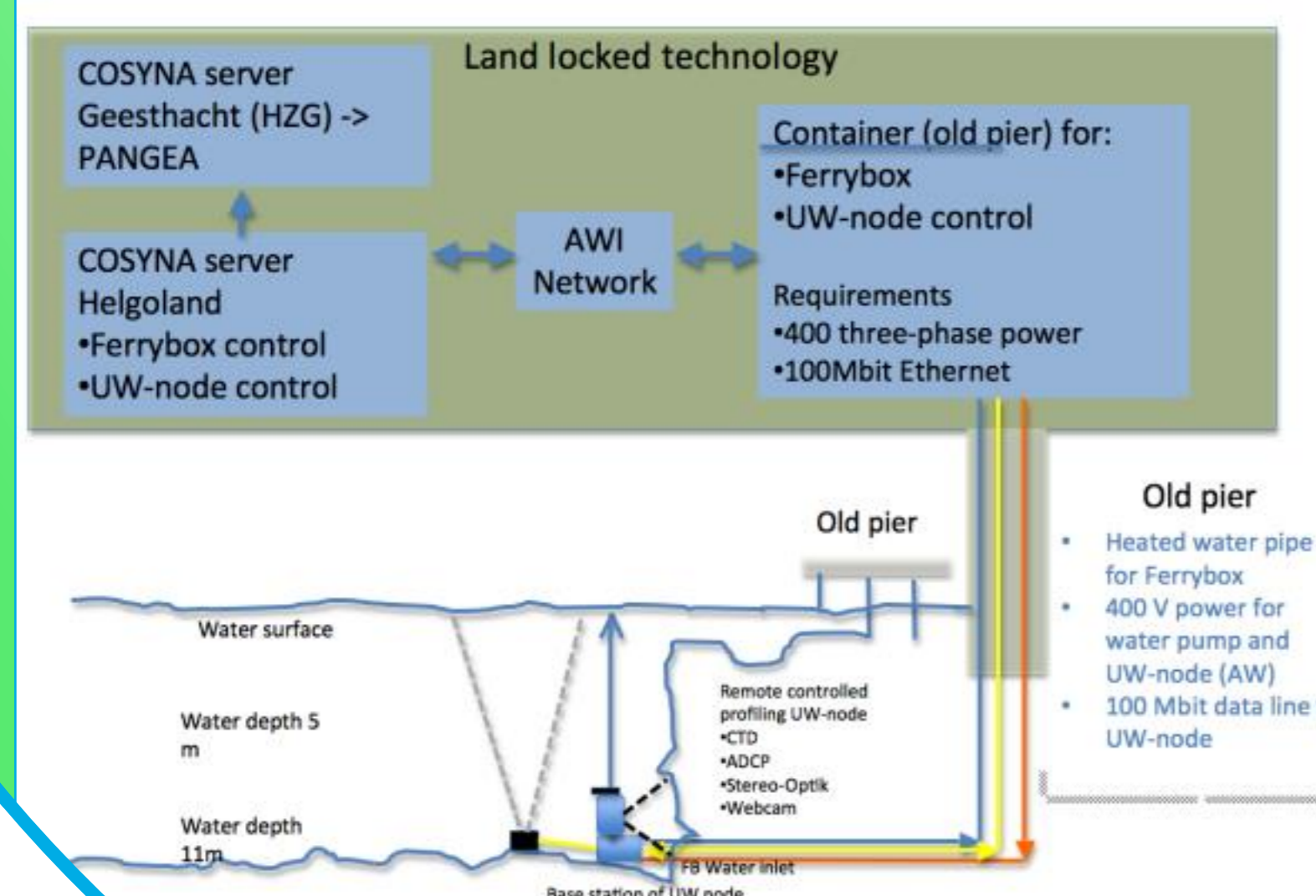
## Marine Underwater Observatory - Marine Biology -

- Scientific diving
- Probe analysis on site



The underwater elevator.

Principle of the measurement infrastructure.



Underwater camera view at the Old Pier.

- Continuous monitoring of oceanographic parameters
- CTD and Stereo Camera (vertically moving)
- Online data

