

Electromagnetic wave speed in polar ice: Validation of the CMP technique with high-resolution dielectric profiling and γ -density measurements

O. Eisen, U. Nixdorf, F. Wilhelms and H. Miller

Alfred-Wegener-Institut für Polar- und Meeresforschung Bremerhaven, Bremerhaven, Germany

Abstract

The accuracy of the travel time–velocity and travel time–depth profile derived from ground-penetrating radar (GPR) common-midpoint (CMP) surveys at different frequencies is investigated for the first time ever by direct comparison with the profile calculated from high resolution dielectric-profiling (DEP) ice core data. In addition, we compare two travel time profiles calculated from ice core density data by means of different dielectrical mixture models with the DEP based profile. CMP surveys were carried out at frequencies of 25, 50, 100 and 200 MHz near the new European deep drilling site DML05 in Dronning Maud Land, Antarctica, during the 1998/99 field season. An improved scanning capacitor for high resolution DEP and a γ -densimeter for density measurements were used to determine the complex dielectric constant and the density at 5 mm increments along the ice core B32, retrieved in 1997/98 at DML05. The comparisons with DEP and density based velocity series show that the CMP velocity series are slightly higher, but asymptotically approach the core based velocities with depth. Root-mean-square differences of the DEP velocity series range between 8% for the 25 MHz CMP and 2% in the case of the 200 MHz survey. Density based velocities differ from the DEP velocities by less than 1%. The travel time–depth series calculated from the interval velocities show a better agreement between all series than the velocity series. Differences are between 5.7 and 1.4% for the 25 and 200 MHz CMP measurements, and less than 0.6% for the density data. Based on these comparisons we evaluate the accuracy with which the depth of electromagnetic reflectors observed in common-offset profiles can be determined and discuss reasons for the observed differences between CMP- and core based profiles. Moreover, we compare the errors determined from the field measurements with those estimated from GPR system characteristics to provide a measure that can be used to estimate the accuracy of GPR analyses for the planning of GPR campaigns. Our results show that CMP surveys are a useful technique to determine the depth of radar reflectors in combination with common-offset measurements, especially on a region-wide basis.

INTRODUCTION

Radio-echo sounding (RES) is an active remote sensing method that has become a major tool for glaciological investigations (Bogorodsky and others, 1985). Whereas satellite-borne radar devices operating in the GHz bands yield information about the upper few centimeters to meters of the ice and snow surface, RES performed in the MHz to GHz bands is capable to penetrate up to several tens of meters to kilometers of ice.

RES devices are used to determine the inner state of the ice sheet (Fujita and others, 1999), bottom topography (Steinhage and others, 1999; Nixdorf and Göktas, 2001), to separate certain thermal regimes (Murray and others, 2000), transfer datings from ice cores to electromagnetic reflectors (Hempel and others, 2000), and get information about the accumulation (e.g. Richardson and others, 1997; Nereson and others, 2000; Siegert and Hodgkins, 2000) and strain history (Vaughan and others, 1999). Whereas some surveys try to make use of the frequency dependence of the dielectrical properties (Fujita and others, 1999), most applications analyse the depth and shape of internal reflectors. As the return signals are recorded as a function of travel time of the transmitted radar pulse, the latter application requires knowledge of the variation of the wave speed with depth in order to be able to convert the observed reflections from time to depth domain.

In this paper we compare the velocity of electromagnetic wave propagation in ice and the deduced travel time–depth relationship derived from four common-midpoint (CMP) surveys carried out at various frequencies at the site DML05 in Dronning Maud Land (DML), Antarctica, with results from new high resolution dielectric-profiling (DEP) data and two simple density based mixture models, the classical Looyenga (1965) model, which is based on theoretical considerations, and the empirical fit derived from field data given by Kovacs and others (1995).

Methods have been developed to determine

the velocity–depth function of electromagnetic waves propagating through ice. The most direct method involves the measurement of dielectrical properties along ice cores by means of DEP (Moore and Paren, 1987; Wilhelms and others, 1998), from which interval velocities can be calculated directly. Instead of the dielectrical properties, density profiles of an ice core can also be used to determine the electromagnetic wave speed from mixture models (Kovacs and others, 1995; Richardson and others, 1997).

Indirect techniques are usually carried out with ground penetrating radar (GPR) systems, using different approaches. The down-hole radar technique makes use of a borehole to record travel times as a function of depth of a reflecting target (e.g. Jezek and Roeloffs, 1983; Clarke and Bentley, 1994). Interval velocities can then be derived from the transmitter–target–receiver travel time as a function of depth. Although this type of measurement and the subsequent analysis is straightforward and less time consuming than those referred to previously, it still makes use of an existing hole.

A special case of radar wide-angle and reflection measurements is the common-midpoint (CMP) survey technique, well known from reflection seismic exploration (Yilmaz, 1987). As an indirect method this technique has been widely applied to single and multichannel GPR measurements in recent years (e.g. Fisher and others, 1992; Hempel and others, 2000; Murray and others, 2000). The CMP technique makes use of a special linear geometry setup such that the points of reflection at a certain depth remain the same for all transmitter–receiver offsets. The velocity–depth function can be inferred from the increase of travel time with offset, assuming near-horizontal reflectors.

Whereas the errors involved in calculating the velocity–depth profile from DEP and density models are rather small, a fair amount of time and logistic support for retrieving and processing the core is required. CMP measurements, on the other hand, can be carried out rapidly

and with little logistic support. As the dielectric properties depend in principle on temperature, the CMP technique has the advantage to take the in situ temperature into account, compared to ice core data that are processed at an ambient processing temperature. However, wavelengths typically on the order of meters result in lower resolution, and theoretical assumptions for CMP analysis introduce errors, when establishing a travel time–velocity profile from GPR measurements. The results of our investigations are used to evaluate the accuracy of the CMP travel time–velocity and travel time–depth functions with regard to the other methods, and to assess if the lower expenditure in the field justifies CMP application to determine the depth of electromagnetic reflectors.

DATA, EQUIPMENT AND METHODS

Data basis and GPR system

The European Project for Ice Coring in Antarctica (EPICA) aims to retrieve deep ice cores from two different regions of the Antarctic ice sheet (Dome Concordia and DML). During the 1998/99 EPICA pre-site survey in DML, GPR measurements were carried out simultaneously at two different frequencies on a traverse connecting the locations of ice cores drilled in earlier seasons. In addition to more than 4000 km of common-offset GPR profiles, six CMP measurements were obtained at different frequencies at several borehole locations along the traverse (Figure 1). Most CMP surveys were measured at the site DML05, close to the location of the forthcoming ice coring, from which a shallow 150 m ice core was retrieved during the 1997/98 season. The field processing of the ice core, hereafter referred to as B32, included high-resolution DEP and density measurements (Oerter and others, 2000). Together with the CMP data they form the basis for the investigations carried out in this paper.

The radar measurements were performed with a commercial RAMAC GPR set of the Swedish

company Malå Geoscience. The GPR device is a monopulse bistatic radar system with a maximum sample rate of 200 scans/s, a dynamic range of 150 dB, and can be operated at several frequencies. The data acquisition is organised by software from the same company, using a Husky PX5 personal computer. The antennae are connected to the control unit via fibre-optics cables, thus avoiding disturbing interferences of the transmitted wave with ohmic connectors. For all field measurements discussed here a linear profile line was set up with an azimuth of approximately 130° and ~100 m SE of the location of the core B32. Four CMPs were carried out with antenna frequencies of 25, 50, 100 and 200 MHz, using 512 stacks per trace and the geometric setup as given in Table 1.

CMP method with GPR

The CMP recording technique is usually employed to improve the signal-to-noise ratio with redundant recording during reflection seismic data acquisition (Garotta and Michon, 1967; Yilmaz, 1987), and has also been applied successfully to GPR surveys (Fisher and others, 1992; Greaves and others, 1996). In addition, multifold coverage with nonzero-offset recording yields velocity information about the subsurface. In the case of single-channel GPR, the redundancy is achieved by multiple offset coverage of the same subsurface point with one transmitter–receiver pair, positioned at the same distance from the center of a linear profile. Since the geometry of the setup is essential for the analysis, the offset x between both antennae is, for the sake of simplicity, usually increased in N equidistant intervals Δx , starting from a minimum offset x_0 up to a maximum offset $x_N = x_0 + N \Delta x$. At a given offset x from the profile center, the travel time $t(x)$ along the raypath from the transmitter to the depth point and back to the receiver at the surface is

$$t(x) = \sqrt{t^2(0) + x^2/v^2}, \quad (1)$$

where v is the velocity of the medium above the reflecting interface, and $t(0)$ is twice the travel time along the vertical path. Equation (1) describes a hyperbola in the plane of two-way travel time (TWT) vs offset. The difference between the two-way time $t(x)$ at a given offset x and the two-way zero offset time $t(0)$ is called normal moveout (NMO). When $t(x)$ and $t(0)$ are known, the velocity v can be calculated from Equation (1). With an estimated NMO velocity the travel times can be corrected to remove the influence of the offset, thus turning the reflection hyperbola in the radargram into a flat reflector.

To derive an expression for the vertical velocity distribution, assume a lateral homogeneous medium consisting of J horizontal layers of constant interval velocities v_1, v_2, \dots, v_J . The travel time from the transmitter to the depth point at the j -th layer and back to the receiver then becomes a function of layer thickness, velocity, and higher orders of the offset x . The root-mean-square (rms) velocity v_{rms} down to the j -th reflector is defined as (Yilmaz, 1987)

$$v_{\text{rms},j} = \sqrt{\frac{1}{t(0)} \sum_{i=1}^j v_i^2 \Delta t_i(0)}, \quad (2)$$

where $\Delta t_i(0)$ is the travel time through the i -th layer and $t(0) = \sum_{k=1}^j \Delta t_k(0)$. When the offset is small compared to depth, the travel time can be approximated by

$$t(x) = \sqrt{t^2(0) + x^2/v_{\text{rms}}^2}. \quad (3)$$

Comparing Equations (1) and (3), it can be seen that, in the so-called small-spread approximation, the velocity required for NMO correction is equal to the rms velocity.

CMP data processing

Data processing is carried out using Paradigm Geophysical FOCUS version 4.2 software. The processing stream for all measurements includes bandpass filtering and automatic gain control. An example for the CMP measured with the

200 MHz antennae after these processing steps is shown in Figure 2. These steps are followed by the definition of the trace geometry and a first estimate of the TWT-rms-velocity profile from the velocity spectrum using a stacked amplitude contour plot (Figure 2). Velocity estimates are not reliable at times greater than that at which the last coherent reflection occurs (e.g. below 1.2 μs in Figure 2). To improve the velocity model, reflection hyperbolae are manually fitted to prominent reflectors in the radargram by selecting points in the v_{rms} vs TWT domain. A final check of the velocity distribution is performed by investigating the NMO-corrected radargrams in the offset vs TWT domain, i.e. if all hyperbolic reflectors are transformed into flat events. As the final step we use the TWT-rms-velocity distribution to successively invert Equation (2) to obtain the interval velocities (Dix, 1955), which in turn are used to perform the travel time to depth conversion of the prominent horizons.

High-resolution DEP

The complex relative dielectric constant (DC) can be written as

$$\epsilon = \epsilon' - i\epsilon'' = \epsilon' - i\frac{\sigma}{\epsilon_0\omega}, \quad (4)$$

where the real part ϵ' is the ordinary relative permittivity of the medium. The imaginary part ϵ'' is the dielectric loss factor and can be expressed as a function of conductivity σ , circular frequency ω and the permittivity of vacuum ϵ_0 . The DC can be determined along an ice core by means of DEP (Moore and Paren, 1987). An improved DEP device developed by Wilhelms and others (1998), essentially a calibrated guarded scanning capacitor, was used at a frequency of 250 kHz to determine the complex DC along the ice core in 5 mm increments. The new version of the DEP device has a systematic accuracy of about 1% for each complex permittivity component. Sections with poor core quality, such as cracks or missing pieces, were removed from the data set.

The electromagnetic wave speed c in snow and ice obeys the general equation

$$c = c_0/\sqrt{\epsilon}, \quad (5)$$

with c_0 being the electromagnetic wave speed in vacuum. The DEP measurements indicate that the conductivity is of the order of 10^{-5} Sm^{-1} , implying that the imaginary part of the DC calculated from Equation (4) is about two orders of magnitude smaller than the real part. It can thus essentially be neglected for determining c from Equation (5) and the DEP data.

For each point of the DC–depth series we calculate the wave speed, resulting in a velocity–depth distribution. The linear interpolation of the velocity between the data points and the subsequent integration of the velocity distribution yields a propagation time for each data point, which, in analogy to the propagation of a transmitted radar pulse in ice, can be converted to a TWT.

γ -absorption density and mixture models

In dry ice density is the main factor affecting the real part of the DC (Robin and others, 1969). With the use of a mixture model that relates the ice density to the DC it is therefore possible to calculate the electromagnetic wave speed from the measured density. In addition to the DEP device, the measuring bench hosts a γ -densiometer as well, allowing quasi simultaneous measurements of the DC and density. The density of the core, being an air-ice mixture, was recorded in 5 mm increments with an accuracy of 10 kg m^{-3} , corresponding to $\sim 1.1\%$ for solid ice (Wilhelms, 2000). For the application of the γ -density to calculating the wave speed two relations are considered that connect density and permittivity; the model by Looyenga (1965) and the relation given by Kovacs and others (1995).

Looyenga (1965) derived a relation that connects density and permittivity of a constant mixture from a theoretical model. Application to polar ice yields an expression for the permittivity

of the mixture:

$$\epsilon' = \left(\frac{\rho}{\rho_{\text{ice}}} [\sqrt[3]{\epsilon'_{\text{ice}}} - 1] + 1 \right)^3 \quad (6)$$

Here, $\epsilon'_{\text{ice}} = 3.17$ is the permittivity and $\rho_{\text{ice}} = 917 \text{ kg m}^{-3}$ is the density of ice (Robin and others, 1969).

The empirical formula published by Robin and others (1969) was improved by Kovacs and others (1995) by comparing field measurements of the DC with density. Their study leads to the relation

$$\epsilon' = (1 + 0.845\rho)^2, \quad (7)$$

with a standard error of ± 0.031 for ϵ' ($\sim 1\%$ for ϵ'_{ice}).

Using the γ -density–depth series together with Equations (6) and (7) provides two series for ϵ' of the mixture. These are used to determine the velocity from Equation (5) and the TWT as explained for the DEP measurements.

COMPARISON OF THE ELECTROMAGNETIC WAVE SPEEDS

The CMP-processing sequence is performed for each of the four CMP measurements. Together with the DEP and density based interval velocity distributions, this results in seven different data sets for the TWT–interval velocity and TWT–depth distributions for the site of the ice core B32. For the sake of brevity the interval velocity is referred to as velocity, as only the interval velocities are considered.

Interval velocity

The spatial resolution of the three methods, DEP, mixture model and CMP analysis, varies between 5 mm for the ice core data to several tens of meters for the 25 MHz-CMP measurement (Table 1). In order to estimate the accuracy of the methods, it is appropriate to smooth the ice core based data series as follows.

The DEP and γ -density velocities are resampled with a linear interpolation on an equidistant

sample interval of 1 ns, and then smoothed with a cosine time domain filter with a filter length of 0.2 μs . The CMP velocities are plotted on mid-interval points and connected by straight lines representing a linear velocity gradient. Except for the 25 MHz-CMP the course of the velocities with TWT show a similar trend for all three methods, asymptotically approaching the wave speed of bubble free ice of 168 m (μs)⁻¹ (Figure 3). The velocities derived from the 25 MHz-CMP are systematically higher by ~ 10 m (μs)⁻¹ than the core measurements. Although the 50 and 100 MHz-CMP differ from the core measurements by up to 10 m (μs)⁻¹ as well, their agreement is better as they approach the latter to within 5 m (μs)⁻¹ below 1.1 μs . The 200 MHz-CMP compares best with the core measurements, with maximum difference of 6 m (μs)⁻¹. However, its velocity gradient is systematically larger, the velocities being generally higher above 0.35 μs and smaller below. The velocities derived from the three different types of core measurements agree very well, with differences mainly in the upper 0.3 μs and below 1.1 μs .

To quantitatively estimate the differences of the seven data sets and to account for the different resolution of the methods it is useful to consider the rms differences of the velocity curves. As the DEP method has the highest accuracy and resolution, the filtered DEP velocity profile is used to define a standard velocity series $v_{\text{int}}^{\text{DEP}}$. The relative rms differences of the velocities $\sigma_{v_{\text{int}}}$ are calculated by the equation

$$\sigma_{v_{\text{int}}} = \sqrt{\frac{1}{N-1} \sum_{j=1}^N \left(\frac{v_{\text{int},j} - v_{\text{int},j}^{\text{DEP}}}{v_{\text{int},j}^{\text{DEP}}} \right)^2}, \quad (8)$$

where $v_{\text{int},j}$ is the considered series of length N and $v_{\text{int},j}^{\text{DEP}}$ is the standard velocity series which is again resampled at the locations j of the considered series.

For the CMP velocities, the absolute rms differences vary between 7.8 and 1.8% for the 25 and 200 MHz-CMP, respectively (Table 2). The CMP rms differences show a trend to decrease with increasing frequency and number of data

points. The relative rms differences between the averaged density based velocities and the standard velocities are 0.7 and 0.3% for the Looyenga (1965) and the Kovacs and others (1995) mixture models, respectively.

Time to depth conversion

The TWT–depth relation is needed to convert the picked travel times of prominent reflectors detected in common-offset profiles to depth domain. As the TWT–depth relation is calculated by integrating the interval velocities, minor differences between the different profiles are smoothed out (Figure 4).

In analogy to Equation (8) we calculate the relative rms difference σ_z between the TWT–depth series of the different data sets and the standard TWT–depth series. For the definition of the standard depth series z^{DEP} as well as the calculation of σ_z we apply the same resampling and filtering as described above. The relative rms differences of the CMP TWT–depth functions are smaller than those of the relative rms velocity differences (Table 2). They decrease from 5.7% for the 25 MHz-CMP to 1.4% for the 200 MHz-CMP. Although the general trend is still that the rms difference decrease with increasing frequency, the 50 MHz CMP shows smaller differences than the one measured at 100 MHz. The rms differences calculated from the DEP and the Looyenga (1965) and Kovacs and others (1995) mixture models are 0.6 and 0.1%, respectively.

DISCUSSION

There could be several reasons for the observed discrepancies in the TWT–velocity and TWT–depth profiles from the different methods. In order to provide a quantitative uncertainty for the GPR measurements, individual errors arising from theoretical approximations and measurement devices are estimated to explain the observed errors.

In general the CMP velocities appear to be higher than the velocities calculated from DEP

and γ -density data. A systematic overestimation of velocities has also been noticed in former investigations (Jezek and Roeloffs, 1983; Morey and Kovacs, 1985). Whereas instrument related timing errors are made responsible for deviations from laboratory measurements carried out by Jezek and Roeloffs (1983), Morey and Kovacs (1985) attribute observed differences in travel times to curved ray paths, resulting from the refraction of the propagating radar pulse at boundaries of a changing DC, which is not accounted for in the hyperbolic Equation (3). In our case, timing errors can be ruled out as the device and the data were checked by various means. If a curved ray path would be responsible, then a deviation of the same order should be observed for all CMPs. Especially the good agreement of the 200 MHz-CMP with the core based profiles refute this explanation.

When dipping layers are present, the observed reflections of a low velocity event cannot be distinguished from a high velocity event with horizontal layering without further information (Yilmaz, 1987). To check whether the assumption of a horizontal subsurface geometry is justified in our case, prominent reflectors were picked from two common-offset GPR surveys carried out with the 200 MHz antennae, crossing at the location of B32. The detected reflectors are found to dip by some 4° relative to the surface around $1.1 \mu\text{s}$ and by less than 1° near $0.6 \mu\text{s}$ within 2 km of B32. As the CMP profiles were obtained approximately perpendicular to the gradient of the internal layers, dips of 4° and 1° cause the rms velocities used for NMO correction to be 0.25% and less than 0.1% higher than the true velocities, respectively (Yilmaz, 1987) (i.e. the interval velocities are slightly overestimated). These changes are smaller than the rms differences calculated above and only affect velocities below ~ 60 m. We therefore conclude that the slight dipping of the internal reflectors do not alter the TWT–depth function significantly.

The derivation of the hyperbolic Equation (3) presumed that the small-spread approximation

is valid, i.e. that the offset is small compared to depth. However, this prerequisite is violated for all CMP analyses for the uppermost reflectors, and above 100 m for the 25 and 50 MHz-CMP, thus explaining the observed trend that differences between CMP and DEP velocities are larger for smaller depth.

Other contributions to the observed differences arise from the CMP surveys. Due to the decrease in resolution with increasing wavelength the best agreement with the DEP profile results from the fitting of 22 individual hyperbolae in the 200 MHz-CMP, whereas only 6 hyperbolae are available for the 25 MHz-CMP. Lateral variations of the physical properties in the upper few meters of the ice sheet could contribute to deviations, likewise might the simple separation of the borehole location B32 and the CMP center point by 100 m. However, the quantitative influence of lateral inhomogenities can only be investigated by time consuming multi-channel GPR survey geometries (Fisher and others, 1992; Greaves and others, 1996).

The differences in the various TWT–depth functions result directly from the time-to-depth and depth-to-time conversion of the interval velocities from the CMP and core measurements, respectively. Because of the smoothing effect of the velocity integration the rms differences decrease (Table 2). To determine the accuracy of the depth of a reflector observed in the time domain, it is important to consider the errors involved with the picking of reflector phases. Different phases of prominent reflectors can be separated in the radargram, making it possible to determine the time at which the first phase occurs to within one half-cycle. Investigations of the direct waves show that the transmitted radar pulse wavelets at all frequencies consist of more than eight half cycles, each of which is about $\lambda/2$ long. Most of the energy of the wavelets are located in the first four half cycles, except for the 25 MHz pulse, where the main energy is distributed among six half cycles. During propagation, however, the transmitted wavelet is dis-

torted due to several mechanisms, the most important being interferences at different, closely spaced thin layers (Clough, 1977). In addition, especially at longer travel times, the energy decay due to geometric spreading and absorption is too large to be able to resolve the most energetic part of the wavelet. Considering these factors we conclude that the accuracy of the travel time at which a reflector occurs can only be determined to about half the length of the energetic half-cycles of the wavelet. For the system used in this study, this means that the real TWT of an reflector detected with the 200, 100 and 50 MHz antennae is accurate to within $\sim \lambda$ (0.8, 1.7, 3.4 m), and $\sim \frac{3}{2}\lambda$ (10 m) for the 25 MHz antennae.

The TWT to depth conversion on the basis of CMP surveys yields additional errors between 1.4 and 5.7%. For a reflector at a depth of 100 m detected at 200 MHz, this corresponds to an error of 1.4 m because of the uncertainty of the 200 MHz-CMP, and 0.9 m due to the shape of the wavelet and the processes involved during reflections. For the 25 MHz measurements, these errors increase to 5.7 and 10.5 m, respectively. Applying the relation by Kovacs and others (1995) to density profiles to calculate the TWT–depth relation produces a slightly better agreement with the DEP data than using the theoretical model by Looyenga (1965). Although the high resolution DEP technique is the most direct and accurate way to determine the permittivity, the systematic nature of the measurement error implies that the error of a single data point of 1% remains valid for the whole TWT–depth profile (Wilhelms, 2000).

CONCLUSION

The uncertainty involved in the time to depth conversion accuracy of electromagnetic reflectors by state of the art methods has been determined to result in a minimum error of 1%. Maximum errors depend on the used method and range between 1% for DEP, 1–2% for density based mixture models, and between 1.5 and 6% for CMP surveys. In general it can be stated that the er-

rors introduced by the time to depth conversion with a CMP analysis are of the same order as those related to the picking of reflection times.

The overall accuracy in depth of a reflector is determined by the wavelength and the shape of the wavelet of the transmitted pulse and the uncertainty of the method used for time–depth conversion. With the choice of an adequate high resolution of the GPR system, less than 4 m in our study, total errors range between 2 and 6% for depths around 100 m. However, errors could be as high as 12% when the wavelength is increased and the transmitted wavelet reaches a considerable fraction of the observation depth. This implies that higher frequencies should be used for the CMP surveys to resolve the velocity changes, most of which take place in the upper 60–80 m of the ice column. To get better insight into the processes coming along with electromagnetic reflections, it is necessary to carry out further investigations, e.g. by means of numerical calculations based on the measured complex DC. The comparison with real radargrams will provide the opportunity to derive more accurate estimations of the errors involved.

We conclude that the CMP method is suitable for estimating the depth of radar reflectors with sufficient accuracy. Compared to ice core measurements, it is a time saving technique, simple to be carried out, and does not require extensive logistics. CMP surveys are thus a useful tool to acquire region wide information of velocity distributions and time–depth relations, worth to become a standard application for glaciological GPR investigations.

ACKNOWLEDGMENTS

We thank Ian R. Joughin, Martin J. Siegert and one anonymous reviewer for their useful comments. The important contribution of the field parties during data acquisition is greatly acknowledged. The data would not have been acquired without the continuing maintenance of the radar system by Günter Stoof. Prepara-

tion of this work was supported by the Deutsche Forschungsgemeinschaft grant Ni493/1 and two scholarships of the Studienstiftung des Deutschen Volkes. This work is a contribution to the “European Project for Ice Coring in Antarctica” (EPICA), a joint ESF (European Science Foundation)/EC scientific programme, funded by the European Commission and by national contributions from Belgium, Denmark, France, Germany, Italy, the Netherlands, Norway, Sweden, Switzerland and the United Kingdom. This is EPICA publication no. 33.

References

- Bogorodsky, V., C. Bentley, and P. Gudmandsen (1985). *Radioglaciology*. D. Reidel Publishing Company, Dordrecht, Holland.
- Clarke, T. and C. Bentley (1994). High-resolution radar on Ice Stream B2, Antarctica: measurements of electromagnetic wave speed in firn and strain history from buried crevasses. *Annals of Glaciology* 20, 153–159.
- Clough, J. W. (1977). Radio echo sounding: reflections from internal layers in ice sheets. *J. Glaciol.* 18(78), 3–14.
- Dix, C. (1955). Seismic velocities from surface measurements. *Geophysics* 20(1), 68–86.
- Fisher, E., G. A. McMechan, and A. P. Annan (1992). Acquisition and processing of wide-aperture ground-penetrating radar data. *Geophysics* 57, 495–504.
- Fujita, S., H. Maeno, S. Uratsuka, T. Furukawa, S. Mae, Y. Fujii, and O. Watanabe (1999). Nature of radio echo layering in the Antarctic ice sheet detected by a two-frequency experiment. *J. Geophys. Res.* 104(B6), 13,013–13,024.
- Garotta, R. and D. Michon (1967). Continuous analysis of the velocity function and the move out corrections. *Geophysical Prospecting* 15(4), 584–597.
- Greaves, R., J. Lesmes, D.P. Lee, and M. Toksöz (1996). Velocity variations and water content estimated from multi-offset, ground-penetrating radar. *Geophysics* 61(3), 683–695.
- Hempel, L., F. Thyssen, N. Gundestrup, H. B. Clausen, and H. Miller (2000). A comparison of radio-echo sounding data and electrical conductivity of the GRIP ice core. *J. Glaciol.* 46(154), 369–374.
- Jezek, K. C. and E. A. Roeloffs (1983). Measurements of radar wave speeds in polar glacier using a down-hole radar target technique. *Cold Regions Science and Technology* 8, 199–208.
- Kovacs, A., A. Gow, and R. Morey (1995). The in-situ dielectric constant of polar firn revisited. *Cold Regions Science and Technology* 23, 245–256.
- Looyenga, H. (1965). Dielectric constant of heterogeneous mixtures. *Physica* 31(3), 401–406.
- Moore, J. and J. Paren (1987). New technique for dielectric logging of Antarctic ice cores. *Journal de Physique (Colloque C1)* 48(3), 155–160.
- Morey, R. M. and A. Kovacs (1985). Analysis of wide-angle reflection and refraction measurements. *CRREL Special Report 85-5*, 53–60.
- Murray, T., G. W. Stuart, P. J. Miller, J. Woodward, A. M. Smith, P. R. Porter, and H. Jiskoot (2000). Glacier surge propagation by thermal evolution at the bed. *J. Geophys. Res.* 105(B6), 13,491–13,507.
- Nereson, N. A., C. F. Raymond, R. W. Jacobel, and E. D. Waddington (2000). The accumulation pattern across Siple Dome, West Antarctica, inferred from radar-detected internal layers. *J. Glaciol.* 46(156), 75–87.
- Nixdorf, U. and F. Göktas (2001). Spatial depth distribution of the subglacial bed

- and internal layers in the ice around NGRIP, Greenland, derived with airborne RES. *J. Appl. Geophys.* 47, 175–182.
- Oerter, H., F. Wilhelms, F. Jung-Rothenhäusler, F. Göktas, H. Miller, W. Graf, and S. Sommer (2000). Accumulation rates in Dronning Maud Land as revealed by dielectrical-profiling measurements at shallow firn cores. *Ann. Glac.* 30, 27–34.
- Richardson, C., E. Aarholt, S.-E. Hamram, P. Holmlund, and E. Isaksson (1997). Spatial distribution of snow in western Dronning Maud Land, East Antarctica, mapped by a ground-based snow radar. *J. Geophys. Res.* 102(B9), 20,343–20,353.
- Robin, G. d. Q., S. Evans, and J. T. Bailey (1969). Interpretation of radio echo sounding in polar ice sheets. In *Philosophical Transactions of the Royal Society of London*, Volume 146 of A, pp. 437–505. Royal Society of London.
- Siegert, M. J. and R. Hodgkins (2000). A stratigraphic link across 1100 km of the Antarctic ice sheet between the Vostok ice-core site and Titan Dome (near South Pole). *Geophys. Res. Letters* 27(14), 2133–2136.
- Steinhage, D., U. Nixdorf, U. Meyer, and H. Miller (1999). New maps of the ice thickness and subglacial topography in Dronning Maud Land, Antarctica, determined by means of airborne radio echo sounding. *Ann. Glac.* 29, 267–272.
- Vaughan, D., H. Corr, C. Doake, and E. D. Waddington (1999). Distortion of isochronous layers in ice revealed by ground-penetrating radar. *Nature* 398, 323–326.
- Wilhelms, F. (2000). *Messung dielektrischer Eigenschaften polarer Eiskerne*, Volume 367 of *Berichte zur Polarforschung*. Alfred-Wegener-Institut für Polar- und Meeresforschung.
- Wilhelms, F., J. Kipfstuhl, H. Miller, K. Heinloth, and J. Firestone (1998). Precise dielectric profiling of ice cores: a new device with improved guarding and its theory. *J. Glaciol.* 44(146), 171–174.
- Yilmaz, O. (1987). *Seismic data processing*, Volume 2 of *Investig. Geophys.* Society of Exploration Geophysicist.
-
- O. Eisen, U. Nixdorf, F. Wilhelms and H. Miller, Alfred-Wegener-Institut für Polar- und Meeresforschung, Postfach 120161, 27515 Bremerhaven, Germany. (e-mail: oeisen@awi-bremerhaven.de)
-
- This preprint was prepared with AGU's L^AT_EX macros v4. File CMPvsDEP formatted November 20, 2001.

Table 1. Geometric setup and wavelet characteristics of the CMP surveys

f	x_0	x_N	Δx	λ_{ice}	λ_{ice}^w
MHz	m	m	m	m	m
25	10.0	290	5.0	6.7	20.1
50	4.0	300	4.0	3.4	11.8
100	1.0	98	1.0	1.7	8.4
200	1.0	70	0.5	0.8	4.2

f : TX, RX antennae frequency

x_0 : minimum offset

x_N : maximum offset

Δx : shot increment

λ_{ice} : wavelength in ice

λ_{ice}^w : length of transmitted wavlet in ice
(assuming $c_{\text{ice}} = 168 \text{ m } (\mu\text{s})^{-1}$)

Table 2. Root-mean-square differences of CMP and γ -absorption density data sets in relation to the standard DEP series

CMP/density data set	Number of data points	$\sigma_{v_{\text{int}}}$ %	σ_z %
25 MHz	6	7.8	5.7
50 MHz	13	3.0	2.2
100 MHz	14	5.1	3.7
200 MHz	22	1.8	1.4
Looyenga (1965)	1600	0.7	0.6
Kovacs and others (1995)	1600	0.3	0.1

Figure 1. Location map of the study area in Dronning Maud Land. The 1998/99 traverse radar profiles are drawn as solid lines. The location of firn cores at which CMP surveys were carried out are in bold typescript. The inset displays the location of the study area on the Antarctic continent.

Figure 2. Radargram of a CMP, carried out with the 200 MHz antennae, after bandpass filtering and applying an automatic gain control, and the corresponding spectrum of the rms velocity, calculated from stacked amplitudes. The direct wave, the ground wave, and more than 20 reflectors consisting of several phases are clearly visible in the radargram. In the velocity spectrum, the upper 0.18 ns are muted to avoid errors in the calculation from the overlapping of the first reflection and the ground wave.

Figure 3. Two-way travel time (TWT) vs velocity calculated from the CMP and ice core data, as described in the text. The raw velocity profile calculated from DEP measurements is plotted in light grey to illustrate the different resolutions and the effect of the filtering procedure. The vertical line at $168 \text{ m } (\mu\text{s})^{-1}$ indicates the electromagnetic wave speed in solid ice.

Figure 4. Two-way travel time (TWT) vs depth calculated by integrating the velocity profiles.

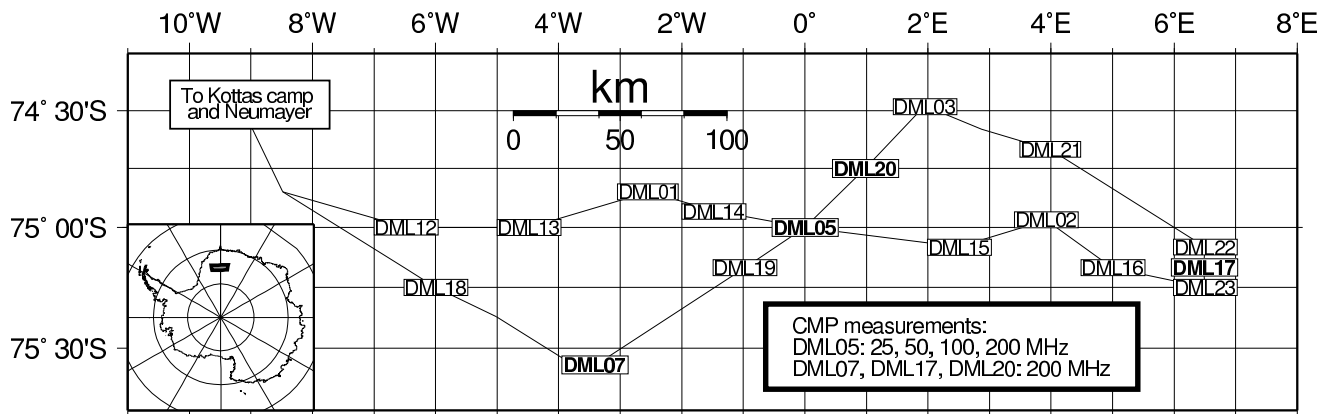


Figure 1.

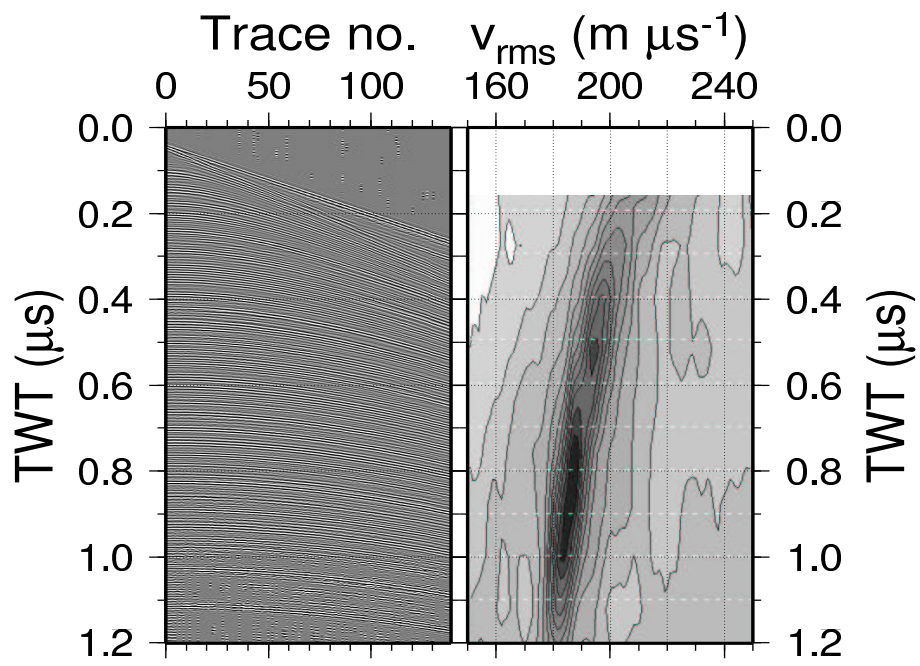


Figure 2.

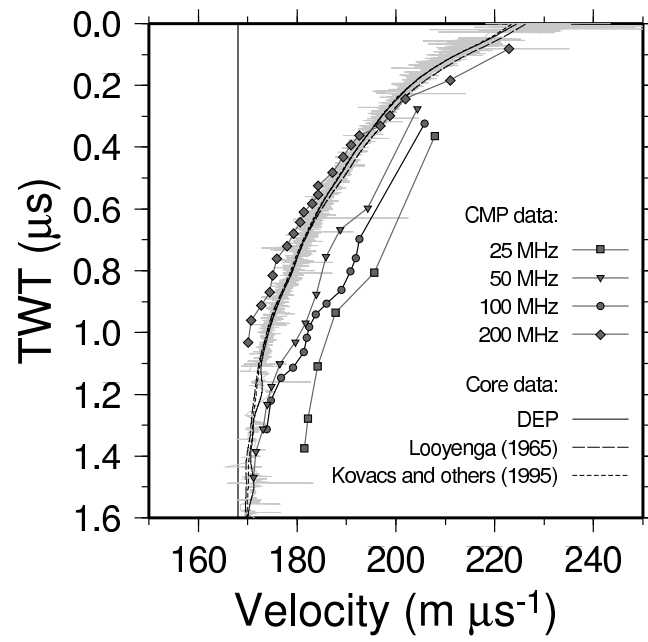


Figure 3.

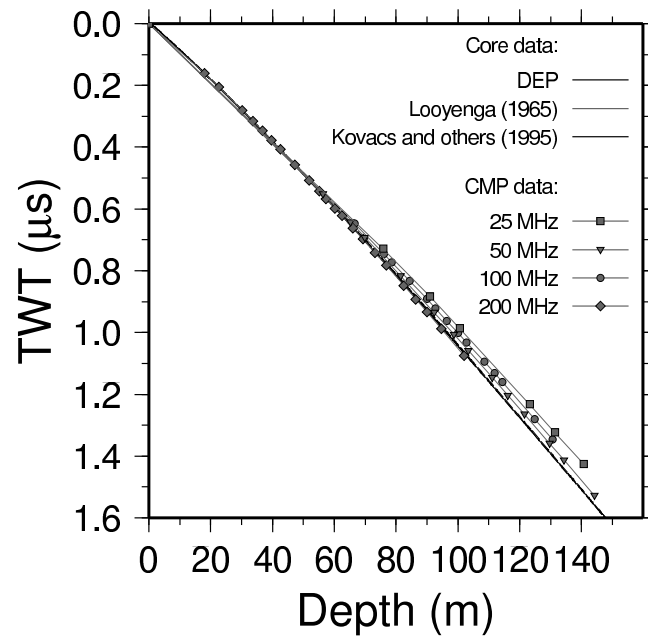


Figure 4.