

# SStopP – From sediment to top predator Influence of Seabed Characteristics on Benthos and Benthivorous birds

Food webs and diversity under global  
and regional change

Sabine Horn

# Background

CARL  
VON  
OSSJETZKY



 **AWI** ALFRED-WEGENER-INSTITUT  
HELMHOLTZ-ZENTRUM FÜR POLAR-  
UND MEERESFORSCHUNG

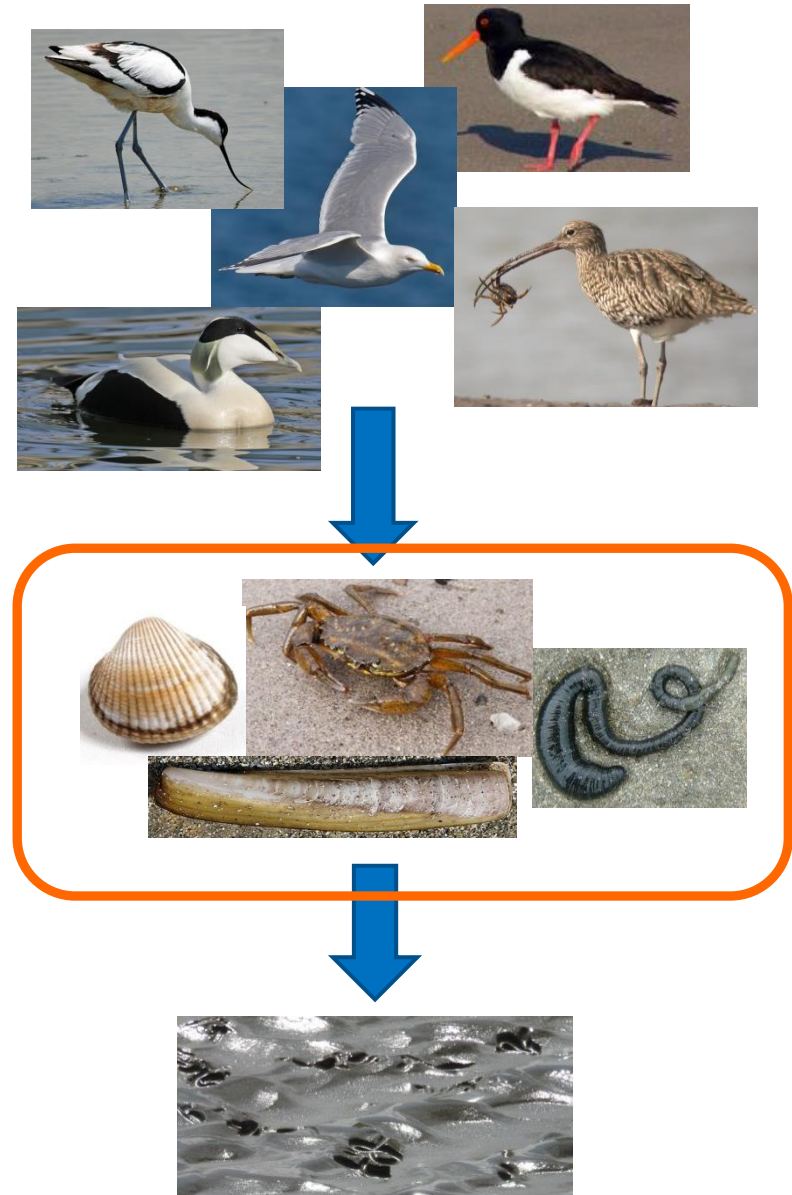


[www.awi.de](http://www.awi.de)



# Aims

- Influence of sediment type to feeding behaviour of birds
- Forecast future scenarios due to anthropogenic or natural changes
- Focus on mussel banks and seagrass meadows



# Project area

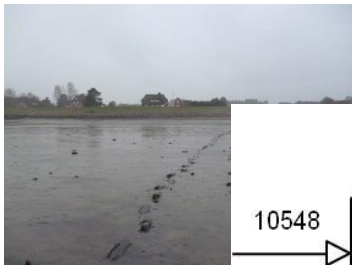
- High bird biodiversity



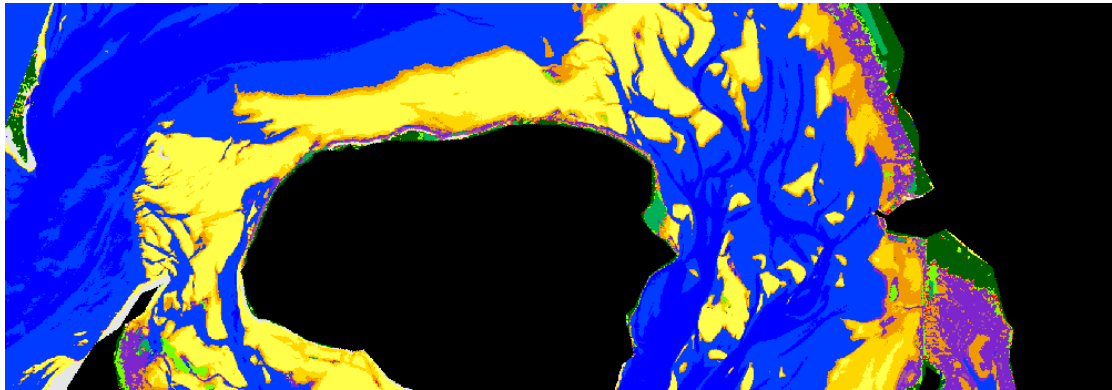
Wikimedia.org



# Habitats



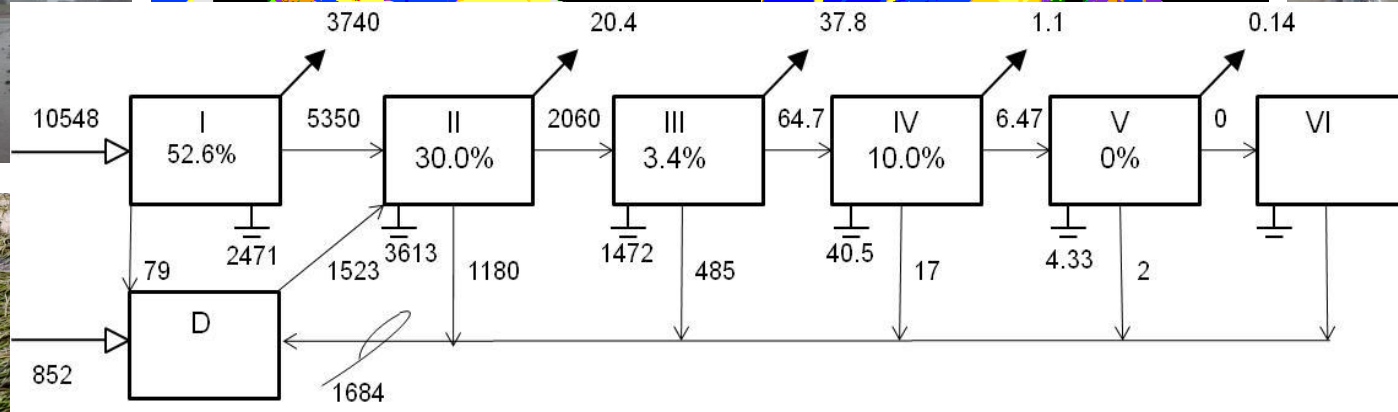
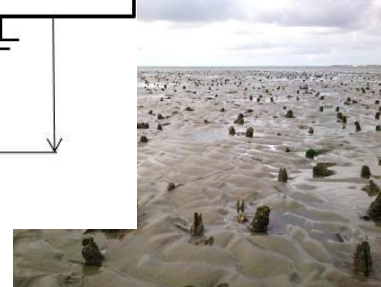
<http://flora.nhm-wien.ac.at>



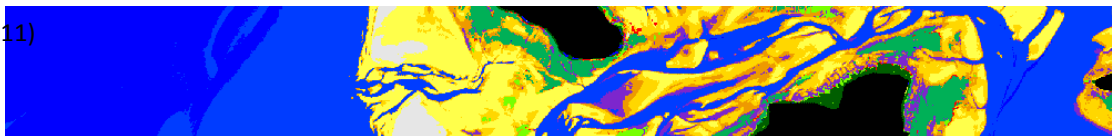
<http://www.wattenrat.de>



[ostseeecke.de](http://ostseeecke.de)

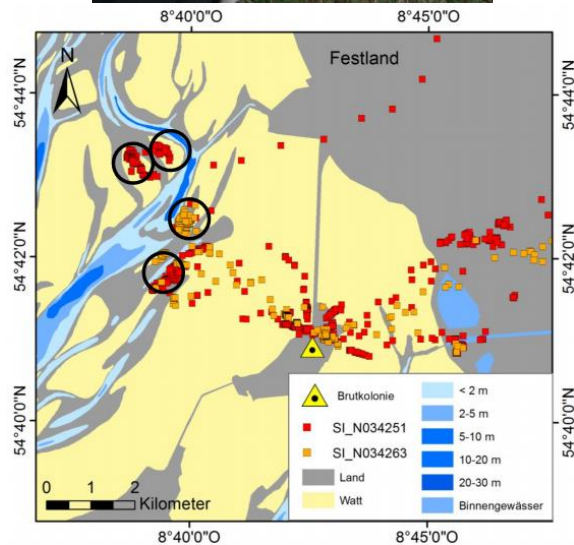


Asmus (2011)

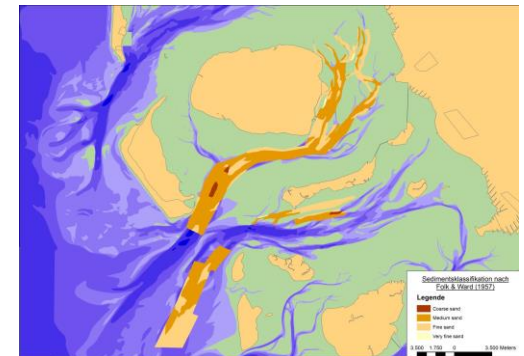
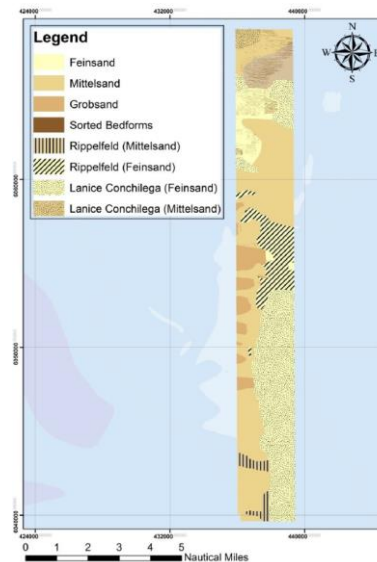


# Partner projects

- FTZ Büsum: Ornithology



- FTZ Büsum: Geology
- Uni Kiel: Geology



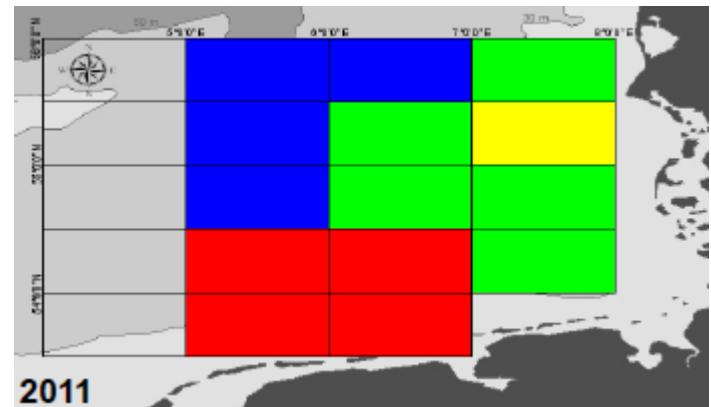
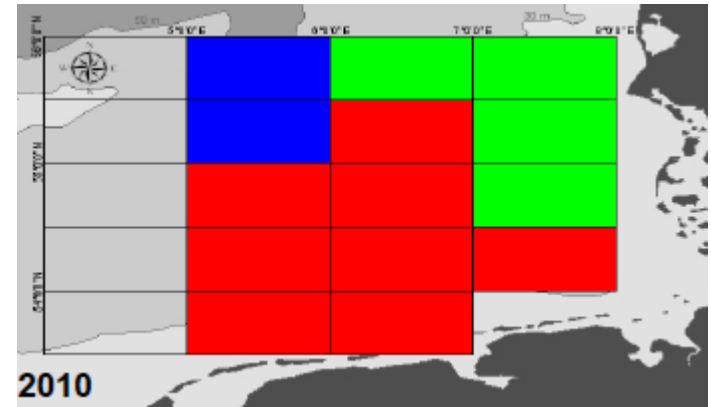
Thank you for your attention

A landscape photograph showing a wide expanse of water in the foreground, likely a beach or coastal area. In the middle ground, there is a sandy beach with a line of small, dark posts or markers. Behind the beach, there are low, rolling sand dunes covered with sparse, dry vegetation. The sky is a uniform, light blue-grey color, suggesting an overcast day.



# Master thesis

- Looked for changes in the community structure since last investigations
- Two years (2010/2011)
- Communities disturbed due to extreme cold winter but recovered in 2011
- Basically still the same infauna communities



□ Got interested in benthic organisms