

## ORIGINAL ARTICLE

# Hemolymph microbiome of Pacific oysters in response to temperature, temperature stress and infection

Ana Lokmer<sup>1,2</sup> and Karl Mathias Wegner<sup>1</sup>

<sup>1</sup>Helmholtz Centre for Polar and Marine Research, Alfred Wegener Institute, Coastal Ecology, Wadden Sea Station Sylt, List, Sylt, Germany and <sup>2</sup>GEOMAR Helmholtz Centre for Ocean Research Kiel, Evolutionary Ecology of Marine Fishes, Kiel, Germany

**Microbiota provide their hosts with a range of beneficial services, including defense from external pathogens. However, host-associated microbial communities themselves can act as a source of opportunistic pathogens depending on the environment. Marine poikilotherms and their microbiota are strongly influenced by temperature, but experimental studies exploring how temperature affects the interactions between both parties are rare. To assess the effects of temperature, temperature stress and infection on diversity, composition and dynamics of the hemolymph microbiota of Pacific oysters (*Crassostrea gigas*), we conducted an experiment in a fully-crossed, three-factorial design, in which the temperature acclimated oysters (8 or 22 °C) were exposed to temperature stress and to experimental challenge with a virulent *Vibrio* sp. strain. We monitored oyster survival and repeatedly collected hemolymph of dead and alive animals to determine the microbiome composition by 16s rRNA gene amplicon pyrosequencing. We found that the microbial dynamics and composition of communities in healthy animals (including infection survivors) were significantly affected by temperature and temperature stress, but not by infection. The response was mediated by changes in the incidence and abundance of operational taxonomic units (OTUs) and accompanied by little change at higher taxonomic levels, indicating dynamic stability of the hemolymph microbiome. Dead and moribund oysters, on the contrary, displayed signs of community structure disruption, characterized by very low diversity and proliferation of few OTUs. We can therefore link short-term responses of host-associated microbial communities to abiotic and biotic factors and assess the potential feedback between microbiota dynamics and host survival during disease.**

The ISME Journal advance online publication, 2 September 2014; doi:10.1038/ismej.2014.160

## Introduction

Over the last couple of decades, it has become clear that microbiota are of vital importance for survival, homeostasis and development of animals (McFall-Ngai *et al.*, 2013). Tight relationships between hosts and their symbionts even inspired a hologenome theory of evolution (Rosenberg *et al.*, 2007), proposing a holobiont—a host together with the associated microorganisms—as the unit of selection. One prominent service that microbiota provide for their hosts is protection from pathogens (Kamada *et al.*, 2013). However, in compromised hosts or under (un)favorable environmental conditions, the symbionts themselves can act as opportunistic pathogens (Garnier *et al.*, 2007; Cerf-Bensussan and

Gaboriau-Routhiau, 2010; Olson *et al.*, 2014). As disease has a large impact on population dynamics and evolution of affected organisms (Altizer *et al.*, 2003), it is important to understand how the environmental factors and stress affect the composition and function of microbiota and the outcome of host–microbe interactions.

Tissues of healthy marine invertebrates usually harbor species-rich microbial communities (Prieur *et al.*, 1990; Gomez-Gil *et al.*, 1998; Romero *et al.*, 2002; Gomez-Gil *et al.*, 2010; King *et al.*, 2012; Trabal *et al.*, 2012; Wegner *et al.*, 2013). This also applies to the hemolymph (Olafsen *et al.*, 1993; Garnier *et al.*, 2007, Wendling *et al.*, 2014)—the functional analog of blood in vertebrates (Bachere *et al.*, 2004). The presence of viable bacteria in the hemolymph of healthy oysters can influence the outcome of pathogen infections either by stimulating immunity or by competitive exclusion (Schmitt *et al.*, 2012); isolation of antimicrobial compounds of bacterial origin from oyster hemolymph has provided support for the latter hypothesis (Defer *et al.*, 2013). Yet oyster hemolymph microbiota have

Correspondence: A Lokmer, Helmholtz Centre for Polar and Marine Research, Alfred Wegener Institute, Coastal Ecology, Wadden Sea Station Sylt, Hafenstrasse 43, List, Sylt 25992, Germany.  
E-mail: alokmer@awi.de

Received 4 March 2014; revised 13 May 2014; accepted 19 July 2014

rarely been studied and so far only by means of culture-dependent methods (Olafsen *et al.*, 1993; Garnier *et al.*, 2007; Wendling *et al.*, 2014). However, neither cultivation nor molecular fingerprinting methods provide realistic estimates of community diversity and composition (Pedros-Alio, 2006; Bent and Forney, 2008). Next-generation sequencing, although by no means free of biases (Fierer and Lennon, 2011; Sergeant *et al.*, 2012; Cai *et al.*, 2013), enables detailed characterization of microbial community composition and dynamics, including rare phylotypes (Huse *et al.*, 2008) that can act as a seed bank and mediate community response to environmental change (Caporaso *et al.*, 2012; Pedros-Alio, 2012; Sjostedt *et al.*, 2012). Recently, amplicon sequencing has been used to characterize oyster gut (King *et al.*, 2012; Trabal Fernandez *et al.*, 2013) and gill microbiomes (Wegner *et al.*, 2013), resulting in higher estimates of  $\alpha$ -diversity and challenging the long-held view that the oyster microbiota are dominated mainly by pseudomonads and vibrios (Priour *et al.*, 1990; Olafsen *et al.*, 1993; Garnier *et al.*, 2007).

Temperature is an important factor in shaping microbial communities in marine abiotic and biotic habitats (for example, Fuhrman *et al.*, 2008). Shifts from mutualist- to pathogen-dominated communities due to global warming have already been reported (Ritchie, 2006), as well as an increase in occurrence of infectious diseases (Altizer *et al.*, 2013). At lower latitudes, warming usually implies crossing the upper limits of thermal tolerance and is almost certain to have adverse effects on the affected organisms (Lafferty *et al.*, 2004; Fan *et al.*, 2013). The outcome in temperate regions can be much less predictable, depending on thermal optima and ranges of hosts and pathogens (Thomas and Blanford, 2003). For example, temperatures over 20 °C are necessary for oyster summer mortalities to occur (Samain *et al.*, 2007; Watermann *et al.*, 2008), but it is low temperatures (<14 °C) that promote development of brown ring disease in clams (Paillard *et al.*, 2004).

Many temperature-dependent disease outbreaks have been linked to various *Vibrio* species (Lacoste *et al.*, 2001; Lee *et al.*, 2001; Garnier *et al.*, 2007; Cervino *et al.*, 2008; Elston *et al.*, 2008) that are commonly isolated from healthy marine animals (Priour *et al.*, 1990; Olafsen *et al.*, 1993; Gomez-Gil *et al.*, 1998; Iida *et al.*, 2000; Vega Thurber *et al.*, 2009; Trabal *et al.*, 2012; Zhao *et al.*, 2012). The effects of temperature on *Vibrio* spp. virulence have also been demonstrated experimentally (Kushmaro *et al.*, 1998; Wendling and Wegner, 2013), making this group a suitable candidate for experimentally exploring temperature-dependent host–pathogen interactions in the marine environment.

So far, most of the research on microbial dynamics in marine poikilotherms has been observational and focused on seasonal changes (Beleneva and Zhukova, 2009; Preheim *et al.*, 2011; Zurel *et al.*,

2011; Erwin *et al.*, 2012; Carlos *et al.*, 2013; Mahalaxmi *et al.*, 2013). However, seasonality does not equal temperature (Farcy *et al.*, 2007; Gilbert *et al.*, 2012) and experimental studies addressing the temperature-dependent short-term microbial dynamics, which may be highly relevant to development of disease, are mostly confined to corals and sponges (Vega Thurber *et al.*, 2009; Simister *et al.*, 2012; Fan *et al.*, 2013).

Although higher temperatures usually promote microbial growth including pathogens, acclimated eurythermic hosts may be well prepared to deal with them. *In vitro* experiments on oyster hemocytes revealed little change in immunocompetence over wide range of environmentally relevant temperatures (Ashton-Alcox and Ford, 1998; Gagnaire *et al.*, 2006). Temperature stress, on the other hand, severely compromised host defenses (Malham *et al.*, 2009), illustrating the need to examine temperature effects in broader context of animal condition and history. Mortalities observed in wild populations of marine poikilotherms are often due to complex interplay of multiple stressors, such as in the well-documented case of oyster summer mortalities, (for example, Samain *et al.*, 2007; Wendling and Wegner, 2013) or *Vibrio harveyi* infection in abalones (Travers *et al.*, 2008). Controlled experiments are therefore the only way to assess the importance and relative contributions of individual factors.

To examine how infection, temperature and temperature stress affect oyster survival and the composition and dynamics of hemolymph microbiota, we experimentally challenged Pacific oysters with a virulent *Vibrio* spp. strain and exposed them to different temperature treatments. We thus present experimental data describing the short-term microbial dynamics in response to abiotic and biotic stress in Pacific oysters. With the combination of the above experimental factors and a high temporal resolution of microbial community dynamics, we can now try to link changes in microbial communities to different stressors and host survival.

## Materials and methods

### *Biological material*

All oysters were collected in a Wadden Sea tidal flat in Königshafen, Germany (55° 1' 44" N, 8° 26' 3" E) and subsequently kept in flow-through aquaria in climate chambers set to either 22 °C (warm-acclimated) or 8 °C (cold-acclimated). To avoid temperature shock during the transfer to the laboratory, the warm-acclimated oysters were collected in late august 2010, while the cold-acclimated oysters of matching size were collected 10 days before the experiment (beginning of November 2010). Warm-acclimated oysters were fed three times a week using shellfish diet instant algae mix (Varicon Aqua Solutions Ltd., Malvern, UK).

For infection, we used the isolate *Vibrio* sp. D29w affiliated to *Vibrio orientalis/tubiashii* clade based on multilocus sequence typing sequencing (Thieltges *et al.*, 2013), which was obtained from hemolymph of the local oyster population. This isolate was shown to induce intermediate levels of mortality upon injection in adults at ambient temperatures (Thieltges *et al.*, 2013), but was highly virulent for larvae at elevated temperatures (Wendling *et al.*, 2014). We cultured bacteria overnight in 8 ml of soya-peptone medium at 25 °C and shaking at 240 r.p.m. Bacterial cells were then collected by centrifugation for 10 min at 5000 r.p.m., resuspended in fresh soya-peptone medium and adjusted to the concentration of  $2 \times 10^8$  cells per ml.

#### Experimental design and hemolymph sampling

The experiment was designed to examine the effects of temperature, temperature stress and infection in a fully crossed three-factorial design for duration of 7 days. A total of 48 oysters (24 animals from each acclimation group) were kept singly in aerated 2.5 l glass jars with no flow-through, after being randomly assigned to experimental treatments. The oysters were either left at their acclimation temperature or stressed by non-abrupt transfer (together with seawater, allowing for gradual temp. equalization) to the opposite temperature, resulting in four temperature treatments: cold-acclimated (CC), warm-acclimated (WW), cold-stressed (WC) and warm-stressed (CW). Half of the oysters in each of the four groups were injected either with *Vibrio* sp. D29w strain or with the pure soya-peptone medium. Injections of 500 µl ( $\sim 10^8$  bacteria) were applied into the adductor muscle with 23 × 1/4 gauge (dm 0.60 × 30 mm) needle introduced via a notch drilled on a ventral shell side. During the experiment, the oysters were kept individually in fully-aerated 2.5 jars filled with the filtered seawater (Supplementary File 1).

To examine the composition and dynamics of hemolymph microbiota, 200 µl of hemolymph was drawn from the adductor muscle just before the experiment and on the third, fifth and seventh day of the experiment. Samples were immediately stored on ice and transferred to  $-80$  °C as soon as possible. The oysters were checked for survival during hemolymph collection. To have a proxy for the abundance of vibrios, 4 µl of hemolymph was streaked on vibrio-selective TCBS (thiosulfate-citrate-bile-salts-sucrose) agar immediately after sampling, the plates were grown at 25 °C, and colony forming units were counted after 24 h cultivation.

#### DNA extraction and amplicon sequencing

DNA was extracted from 174 whole hemolymph samples (Table 1; Supplementary File 1) with the Illustra TriplePrep kit (GE Healthcare Life Sciences, Hamburg, Germany) according to the manufacturer's protocol. DNA concentration and purity were

**Table 1** Number of oysters and hemolymph samples (analyzed/collected) per treatment and sampling point

Treatment <sup>a</sup>	Sampling point (day)				Oysters per treatment	Samples per treatment
	0	3	5	7		
CC_0	6/6	6/6	6/6	6/6	6	24/24
CC_I	6/6	6/6 <sup>b</sup>	6/6 <sup>b,c</sup>	4/4 <sup>c</sup>	6	22/22 <sup>b,c</sup>
CW_0	6/6	6/6	6/6	6/6	6	24/24
CW_I	6/6	6/6 <sup>c</sup>	1/1	1/1	6	14/14 <sup>c</sup>
WC_0	6/6	5/6	5/6	6/6	6	22/24
WC_I	6/6	6/6	5/6 <sup>b</sup>	6/6 <sup>c</sup>	6	23/24 <sup>b,c</sup>
WW_0	6/6	6/6 <sup>c</sup>	3/5	4/5	6	19/22 <sup>c</sup>
WW_I	6/6	6/6	4/4 <sup>b</sup>	4/4 <sup>c</sup>	6	20/20 <sup>b,c</sup>
Total	48/48	47/48 <sup>b,c</sup>	36/40 <sup>b,c</sup>	37/38 <sup>c</sup>	48	168/174 <sup>b,c</sup>

Abbreviations: CC, cold acclimated; CW, warm stressed; WC, cold-stressed; WW, warm-acclimated.

<sup>a</sup>First letter denotes acclimation temperature, Second experimental temperature, followed by infection status.

<sup>b</sup>Moribund oysters included. Total moribund samples: 5/6.

<sup>c</sup>Dead oysters included. Total dead samples: 14/14.

checked with a Nanodrop ND-1000 spectrometer (peqlab, Erlangen, Germany) and all samples were adjusted to equal DNA concentration ( $5 \text{ ng } \mu\text{l}^{-1}$ ).

Ribosomal 16S rDNA V1-V2 region was amplified with a barcoded universal bacterial 27F (CTATGCGC CTTGCCAGCCCGCTCAG-MID-TCAGAGTTTGATC MTGGCTCAG)-338R (CGTATCGCCTCCCTCGCGCC ATCAG-MID-TGCTGCCTCCCGTAGGAGT) primer pair. Forward primers were marked with barcodes MID02 and MID03 and the reverse primers with MID01-MID98 (excluding MID09 and MID12). Each individual PCR including negative controls was coded by a unique combination of forward and reverse MIDs (Binladen *et al.*, 2007; Wegner, 2009). In all, 20-µl PCRs contained 1.5 mM MgCl<sub>2</sub>, 0.2 mM of each nucleotide, 0.2 µM of each primer, 0.5 unit of Taq polymerase (GoTaq Flexi DNAP; Promega, Mannheim, Germany) and 20 ng of DNA template. DNA was amplified using the following protocol: 1 min initial denaturation at 94 °C, 30 cycles of 40 s at 94 °C, 30 s at 55 °C, 30 s at 72 °C and final extension 2 min at 72 °C.

Quality of PCR products was checked on the QIAxcel system using a QIAxcel DNA Screening kit (Qiagen, Hilden, Germany). Equal amounts (10 µl) of each product were then pooled together and cleaned by ethanol precipitation. Pooled samples were finally adjusted to  $150 \text{ ng } \mu\text{l}^{-1}$  and sequenced at Roche GS-FLX 454 platform at the Institute of clinical molecular biology at the Christian-Albrechts-University Kiel, Germany.

#### Data analysis

*Processing of raw sequence data.* Raw reads were demultiplexed using modified Python scripts from the cogent package (Knight *et al.*, 2007). In short, original binary file (sff) was split into multiple sff files corresponding to individual samples allowing

for only perfect matches to both barcodes and primers and translated into sfftxt-files using Mothur (Schloss *et al.*, 2009). Quality control included denoising and chimera removal and was performed using the AmpliconNoise V1.23 pipeline (Quince *et al.*, 2011). Only flowgrams with a minimum length of 200 bp before the first noise signal were kept for further analysis. Initial cutoff value for removing sequencing noise was 0.01 and cluster size 60. No ambiguities were allowed and maximum homopolymer length was set to 7. PCR noise removal cutoff value was 0.08 with the cluster size of 30. Chimeras were identified with Perseus and sequences with probability higher than 50% of being chimeras were excluded from further analysis. A custom perl script was then used to trim primer sequences and create an input fasta file for further analysis.

Raw demultiplexed sequence data are available at European Nucleotide Archive under the study accession number PRJEB5702 (sample accession numbers ERR457899–ERR458074).

We used the QIIME pipeline (Caporaso *et al.*, 2010) to create operational taxonomic unit (OTU) tables and perform rarefaction, taxonomical composition assessment and phylogenetic diversity analyses. OTUs were picked with uclust (Edgar, 2010) at a 97% similarity threshold. Taxonomy was assigned with RDP classifier (Wang *et al.*, 2007) to the genus level, with 60% confidence using the 110 GreenGenes taxonomy 12\_10 (McDonald *et al.*, 2012) as a reference database. The sequences assigned to the genus *Vibrio* were then compared with 16S rDNA sequences obtained from cultured strains isolated from hemolymph of local oysters (courtesy of C Wendling) to identify OTU corresponding to the injected strain. We defined contaminants as OTUs with more than five reads in negative controls and removed them from further analysis. This threshold was chosen because negative control samples represented pools of several individual reactions and most sequences were represented with a single read. Sequences were aligned with mafft (Katoh *et al.*, 2002) and a phylogenetic tree was built using fasttree (Price *et al.*, 2010). We calculated rarefaction curves for Shannon, evenness, species richness and phylogenetic diversity (Faith, 1992) to assess the effects of sample sizes on these  $\alpha$ -diversity metrics.

#### Statistical analyses

All other statistical analyses were performed in R (R Core Team, 2013). Host survival analysis was conducted using the survival package (Therneau, 2013). For bacterial communities, we analyzed relative species abundance,  $\alpha$ - and  $\beta$ -diversity with the Vegan package (Oksanen *et al.*, 2013). Differences in  $\alpha$ -diversity patterns between treatments were analyzed using non-parametric tests and linear mixed models (nlme package; Pinheiro *et al.*, 2013). To assess  $\beta$ -diversity, we calculated Bray-Curtis and

weighted UniFrac distances (Hamady *et al.*, 2010) between the samples and analyzed them by non-metric multidimensional scaling (NMDS) and the *Adonis* implementation of Permanova (non-parametric permutational multivariate analysis of variance; Anderson, 2001). Results are reported for Bray-Curtis distances if not explicitly stated otherwise. We also determined how abundant or dominant ( $\geq 1\%$  of sample) community members contributed to explaining the variation between the treatments. To statistically examine taxonomical composition and identify phylotypes associated with individual treatments and conditions, we applied indicator species approach implemented in indicspecies package (Cáceres and Legendre, 2009).

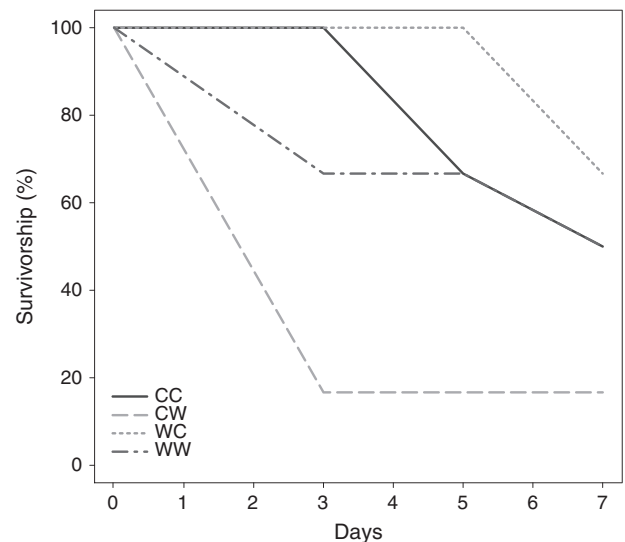
## Results

### *Oyster survival upon infection*

Experimental challenge with *Vibrio* sp. D29w resulted in 54% mortality of infected oysters, as opposed to a single death event in the control treatment ( $\chi^2(1) = 14.52$ ,  $P < 0.001$ , odds = 25.33 (3.10, 1195.27)). Survival analysis of infected oysters revealed significant differences between warm-stressed animals and all the other groups (Peto & Peto modification of the Gehan-Wilcoxon test,  $\chi^2(3) = 9$ ,  $P = 0.029$ ). Not only did the warm-stressed oysters experience the highest mortality, but they also died earlier, within the first 3 days of the experiment (Figure 1).

### *Hemolymph microbiome: general characteristics*

Results of sequence data processing are shown in Supplementary Table 1. Singletons (OTUs represented with a single read in the data set) and the samples with fewer than 100 reads were excluded

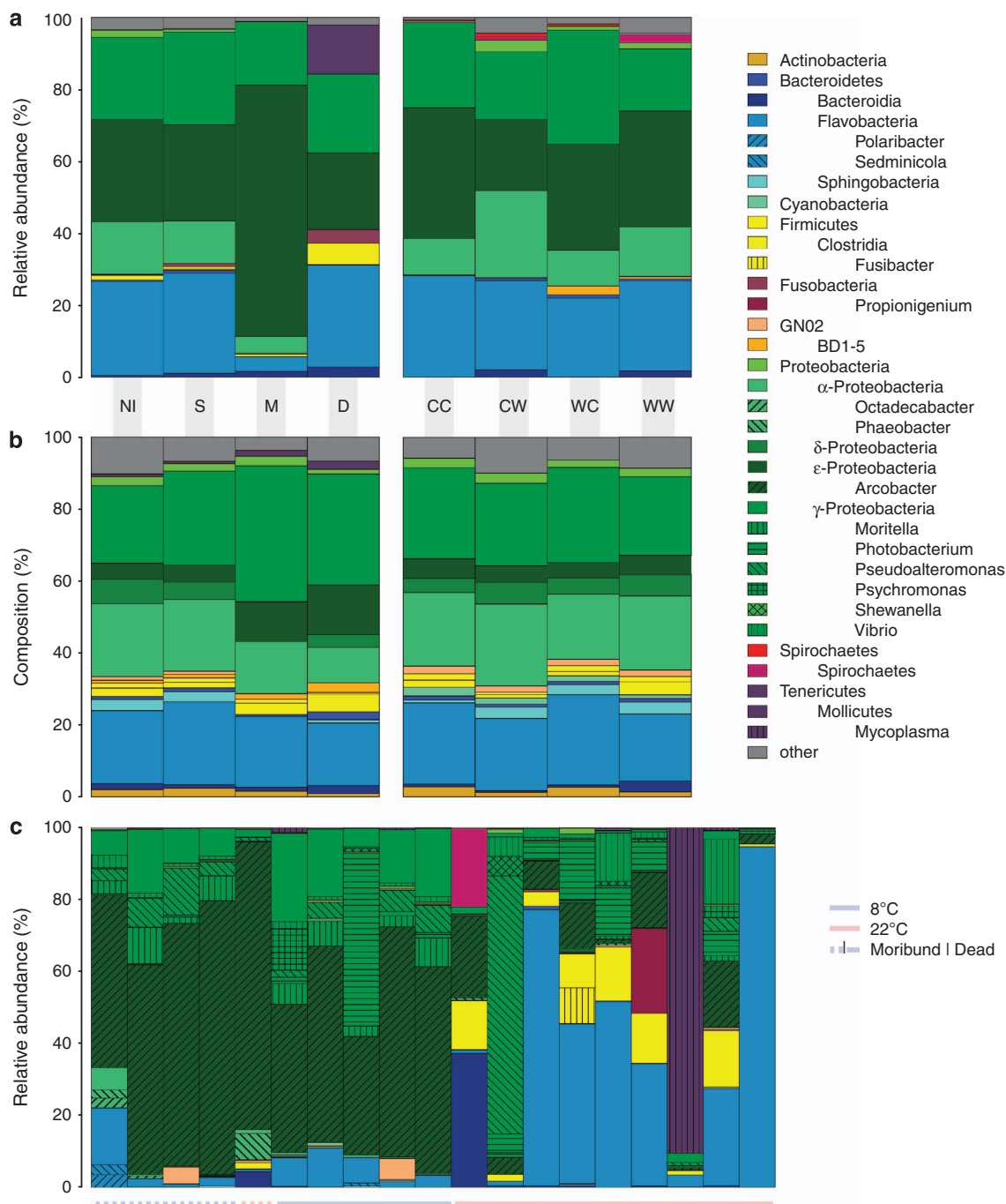


**Figure 1** Survival curves for infected oysters. CC, cold acclimated; CW, warm stressed; WC, cold-stressed; WW, warm-acclimated.

from further analyses. It is noteworthy that four out of six low-coverage libraries came from two uninfected oysters (Table 1; Supplementary File 1), suggesting that low number of reads in these cases may reflect the true absence of bacteria.

Phyla Proteobacteria and Bacteroidetes encompassed the bulk of OTU diversity and abundance (Figures 2a and b; Supplementary Figure 1). Relative

OTU abundances fitted well to Fisher's log-series distribution, both in the data set as a whole and in the individual samples (Kolmogorov–Smirnov test,  $D = 0.000\text{--}0.196$ ,  $P > 0.881$ , details not shown), indicating that few OTUs accounted for the majority of reads. The amount of variability in community composition explained by treatments was slightly higher when only abundant OTUs ( $\geq 1\%$ ), and



**Figure 2** (a) Relative abundance and (b) taxonomical composition (number of OTUs per taxon) at the class level of hemolymph microbiomes (days 3–7) grouped by oyster condition (left, all oysters) and temperature treatments (right, alive oysters). (c) Relative abundance of genera in individual moribund and dead oysters. CC, cold acclimated; CW, warm stressed; WC, cold-stressed; WW, warm-acclimated; NI, non-infected; S, survivors; M, moribund; D, dead.

not the complete data set were considered (Supplementary Figure 2).

Rarefaction curves of  $\alpha$ -diversity metrics show that Shannon's H and evenness—the indices we based our conclusions upon—were relatively stable even at the sampling depths of <100 reads. Furthermore, the relative differences between the treatments were fairly constant over a large range of sampling depths (Supplementary Figure 3). To assure negligible effects of sampling effort on  $\alpha$ - and  $\beta$ -diversity analyses, we generated 10 random subsets of 100 reads per sample and calculated correlations between the  $\alpha$ -diversity metrics (Spearman) and NMDS ordinations (Procrustes) based on subsets and the original data set. High correlation values indicated that our results were not influenced by differences in sampling depths of individual libraries (Supplementary Tables 2 and 3). The main analysis was thus based on the complete data set (excluding singletons) to keep the estimates of  $\alpha$ -diversity realistic and to avoid information loss.

The transfer from the flow-through system to the experimental conditions was followed by significant drop in OTU diversity of alive oysters (39% OTUs were found only on day 0; Figure 3a) contributing to a clear distinction between pre-experimental and experimental communities (Supplementary Figure 4a). Loss of rare OTUs (mean relative abundance of OTUs present only on day 0 was 0.29%, quartiles: 0.14%, 0.36%) and increase in dominance were reflected in substantially lower Shannon's H (median: day 0 = 4.545, days 3–7 = 3.059,  $W = 4931$ ,  $P < 0.001$ ,  $r = -0.718$ ) and evenness (median: day 0 = 0.899, days 3–7 = 0.675,  $W = 4836$ ,  $P < 0.001$ ,  $r = -0.720$ ), regardless of treatment (Figure 3a; Supplementary Figure 5). Since pre-experimental communities

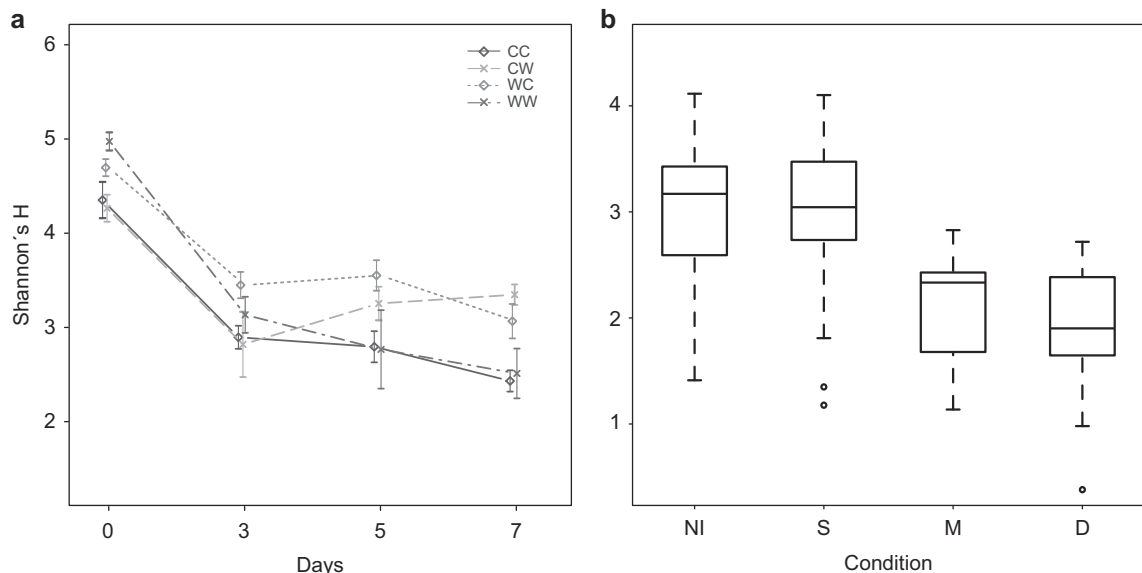
could not be meaningfully assigned to the tested groups, they were omitted from the analyses concerning the effects of experimental treatments and oyster condition.

#### Hemolymph microbiome: effects of infection

To describe effects of infection on hemolymph microbiota, we grouped the infected oysters into three categories: surviving (S, alive at the next sampling point), moribund (M, dead at the following sampling point) and dead (D). We refer to control and surviving oysters together as healthy (H).

Experimental challenge barely affected  $\alpha$ - (Table 2) and  $\beta$ -diversity (Table 3). Microbiomes from healthy oysters (H) formed largely overlapping clusters (Figure 4b), reflecting a comparatively small but significant effect of infection on  $\beta$ -diversity (Table 3). In contrast, moribund (M) and dead (D) oysters formed separate groups from healthy oysters in the NMDS plot (Figure 4a). M and D communities were characterized by proliferation of one or very few OTUs and therefore displayed very low  $\alpha$ -diversity (Figure 3b). At 8 °C, the microbiomes of dead oysters (D) closely resembled those of moribund animals (M, Figure 2c), whereas we observed more variation in community composition and an increase in anaerobic bacteria soon after death at 22 °C.

In contrast to our expectation, the microbiomes of moribund oysters were dominated by the genus *Arcobacter* and not, as expected, by *Vibrio* spp. (Figure 2c; Supplementary File 2). Overall, the infected oysters harbored more strains from other genera with described pathogenic species, such as *Photobacterium* and *Shewanella* (Supplementary File 2).



**Figure 3** Alpha-diversity, expressed as Shannon's H, in response to (a) temperature treatments over time and (b) to oyster condition. Infection is not shown for clarity. Only alive oysters are shown in (a); day 0 samples are omitted from (b). Error bars represent standard error of mean. CC, cold acclimated; CW, warm stressed; WC, cold-stressed; WW, warm-acclimated; NI, non-infected; S, survivors; M, moribund; D, dead.

The indicator species analysis revealed that higher *Vibrio* sp. D29w abundances were associated with infection (IndVal = 0.769,  $P = 0.017$ ), but not directly with mortality or disease (Supplementary File 2). Overall, the OTUs assigned to *Vibrionaceae* resp. genus *Vibrio* (including the injected strain) were common (present in 98.85%, resp. 92.26% of the samples), but not very abundant (5.1%, resp. 1.6% mean relative abundance). The presence of vibrios (other *Vibrionales* occasionally grow on TCBS agar, hence the taxonomically non-specific term) was lower (87.36%) when calculated from colony forming unit counts (Supplementary File 1). The discrepancy was most likely due to the low abundance coupled with the low volume of hemolymph plated. Unlike relative read abundances, higher colony forming unit counts were related to disease and death (generalized linear mixed model:  $Z = -2.61$ ,  $P = 0.009$  (moribund and dead) vs healthy parameter estimate:  $-0.249 \pm 0.095$ , confidence interval (CI) =  $(-0.436, -0.062)$ ; Supplementary Table 4).

*Hemolymph microbiome: effects of temperature and temperature stress*

Before the experiment, Shannon's H (median:  $8^\circ\text{C} = 4.228$ ,  $22^\circ\text{C} = 4.711$ ,  $W = 117$ ,  $P < 0.001$ ,  $r = -0.525$ ) and phylogenetic diversity indices (median:  $8^\circ\text{C} = 19.697$ ,  $22^\circ\text{C} = 28.216$ ,  $W = 81$ ,  $P < 0.001$ ,  $r = -0.652$ ) were higher in warm-acclimated communities, with no difference in evenness between the groups (median:  $8^\circ\text{C} = 0.653$ ,  $22^\circ\text{C} = 0.717$ ,  $W = 214$ ,  $P < 0.128$ ). During the experiment, only the phylogenetic component (phylogenetic diversity) of  $\alpha$ -diversity remained positively correlated with higher ambient temperature (Supplementary Figure 5; Supplementary Tables 5 and 6), indicating the presence of more rare, divergent phylotypes in warmer environment.

Both directions of temperature stress prevented a steady decrease in diversity and evenness that we observed in the acclimated communities (Figure 3a;

Table 2; Supplementary Figure 5). The effect became more pronounced toward the end of the experiment, indicating its persistence and reflecting the gradual and lagged microbiome response to stress. We expected that the OTUs present or dominating the acclimated communities were already established in hemolymph before the experiment, thus getting a head start; and that, in contrast, the temperature stress would facilitate colonization by new species and promote growth of rare or dormant OTUs. However, we found little support for this hypothesis, as the proportion of the OTUs that were dominant in experimental communities and already present at the beginning did not significantly differ between the warm-acclimated and stressed oysters, although it was higher for cold-acclimated microbiomes (Supplementary Table 7).

Acclimation and experimental temperature, as well as their interaction, considerably affected the composition of hemolymph microbiota throughout the experiment (Table 3). Ordination by NMDS clearly separated the communities by temperature treatments (Figure 4b). Ordination and PerMANOVA based on weighted UniFrac showed that little of phylogenetic  $\beta$ -diversity was attributable to the treatments (Supplementary Figures 2 and 4), reflecting similarity of the microbiome composition at above-OTU taxonomic levels. However, we found some indication for increase in potentially pathogenic genera in stressed oysters and at  $22^\circ\text{C}$  in general (Supplementary File 2).

To estimate how experimental treatments affected microbial dynamics, we used the area of polygons connecting all samples from a single oyster in the NMDS plot as a proxy for temporal stability: the smaller the area, the more stable the community. Analysis of variance confirmed the visual impression (Figure 4b) that microbiomes in the cold environment were more stable compared with microbiomes from the warm environment ( $F_{1,26} = 17.86$ ,  $P < 0.001$ ). Stress and infection, on the other hand, had no significant effect on temporal

**Table 2** Linear mixed model for treatment and condition effects on Shannon's H, day 0 samples excluded (AIC = 275.599, BIC = 320.717, logLik (d.f. = 17) = -120.800)

	Factors	d.f.	F <sup>a</sup>	Significant contrasts	Estimate	s.e.	2.5% CI	97.5% CI
Main effects	Acclimation temp.	1, 43	1.776					
	Experimental temp.	1, 43	2.547					
	Time	2, 62	0.735					
	Health status	2, 62	13.569***	Moribund and dead vs healthy	0.298	0.06	0.177	0.418
	Infection	1, 43	0.735					
Interaction terms	A. temp. × E. temp.	1, 43	14.280***	Stressed vs acclimated	-0.421	0.11	-0.646	-0.196
	A. temp. × Time	2, 62	1.407					
	E. temp. × Time	2, 62	4.954*	E. temp. on (day 3 vs days 5–7)	0.148	0.05	0.042	0.253
	A. temp. × E. temp. × Time	2, 62	3.361*	(Stress. vs acc.) on day 3 vs on days 5–7	-0.178	0.07	-0.321	-0.035
	Random intercept	Oyster				0.113	0.005	2.671

Abbreviations: AIC, akaike information criterion; BIC, bayesian information criterion; CI, confidence interval; d.f., degrees of freedom.  
\*Significance levels: \*  $\leq 0.05$ , \*\*\*  $< 0.001$ .

microbiome dynamics ( $F_{1,26} = 0.157$ ,  $P = 0.695$ ,  $F_{1,26} = 0.89$ ,  $P = 0.367$ ).

## Discussion

Host–pathogen interactions have an important role in population dynamics and evolution of organisms. Although microbes inherently differ in their pathogenic potential, a disease usually arises from a complex interplay of multiple factors. Here, we show that temperature represents a notable determinant of microbial dynamics in oyster hemolymph, and propose that the lower temporal stability of microbiomes at higher temperatures may

**Table 3** Adonis (Permanova) results for experimental communities (day 0 excluded) based on Bray-Curtis distances

	<i>d.f.</i>	<i>SS</i>	<i>MS</i>	<i>pseudoF</i>	$R^{2\text{a,b}}$
<i>Main effects</i>					
Acclimation temp.	1	3.308	3.308	12.152	0.076***
Experimental temp.	1	4.062	4.062	14.923	0.093***
Time	2	1.435	0.717	2.636	0.033***
Infection	1	0.853	0.853	3.133	0.020***
Health status	2	1.769	0.885	3.25	0.041***
<i>Interaction terms</i>					
A. temp. × E. temp.	1	1.154	1.154	4.239	0.026***
A. temp. × Time	2	0.729	0.365	1.34	0.017**
E. temp. × Time	2	1.034	0.517	1.899	0.024***
A. temp. × E. temp. × Time	2	0.672	0.336	1.235	0.015**
Residuals	105	28.579	0.272		0.656
Total	119	43.594			1

Abbreviations: MS, mean sum of squares; SS, sum of squares.

<sup>a</sup>Significance values based on 999 permutations.

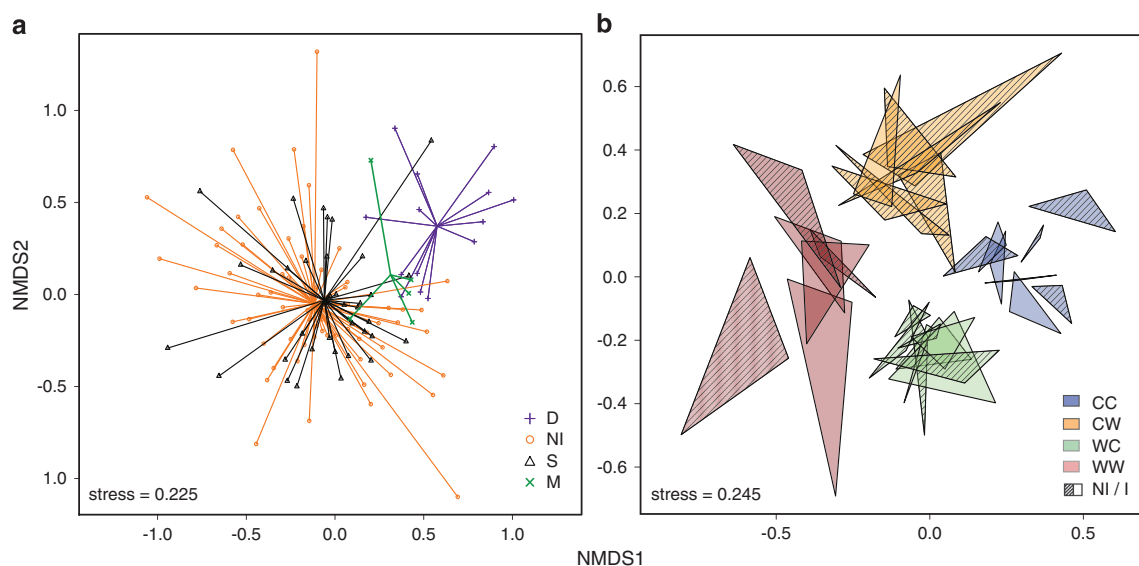
<sup>b</sup>Significance levels: \*\* < 0.01, \*\*\* < 0.001.

have contributed to the higher mortality of the heat-stressed hosts upon infection. We also show that a decrease in diversity and proliferation of opportunistic pathogens precede death, thus representing a good indicator of declining health.

### *Infection, microbiota and oyster health*

Higher mortality at 22 °C can be partially attributed to faster growth of the injected strain (Supplementary Figure 6) and/or to temperature-dependent increase in expression of virulence factors (Kimes *et al.*, 2012). The effect of absolute temperature, however, cannot account for the difference in mortality between stressed and acclimated oysters. Wang *et al.* (2012) reported synergic effects of heat stress and infection on scallop survival and attributed it to energetic stress. A similar mechanism may have played a role for the oyster mortality, because only heat stress, but not cold stress has been shown to increase energy consumption in Pacific oysters (Bougrier *et al.*, 1995; Malham *et al.*, 2009).

Injection of the virulent *Vibrio* sp. strain clearly caused mortality, but was also associated with an increased number of cultivable vibrios in the oyster hemolymph. In contrast, we could not directly link incidence or abundance of the injected strain in the sequenced libraries to disease (Supplementary File 2). For once, we cannot discriminate between sequences from active and inactive cells that would not cause disease (Williams *et al.*, 2009). Moreover, *Vibrio* spp. can have significant influence on the host health, despite the low relative abundance (Vega Thurber *et al.*, 2009). Still, low abundance of the injected strain suggests that other vibrios could



**Figure 4** NMDS plots of Bray-Curtis distances between the microbial communities (day 0 excluded): (a) grouped by oyster condition and (b) showing temporal stability and effects of treatments (alive oysters only). Each triangle represents an oyster with vertices representing days 3, 5 and 7 after the onset of experiment. CC, cold acclimated; CW, warm stressed; WC, cold-stressed; WW, warm-acclimated; NI, non-infected; S, survivors; M, moribund; D, dead.



have contributed to the mortalities, as the exogenous bacteria can be cleared quickly from the hemolymph (Parisi *et al.*, 2008), while stimulating growth of inactive residents (Froelich and Oliver, 2013).

The abundance of *Arcobacter* spp. in moribund oysters also suggests a pronounced role of the indirect effects for the mortalities (Hauton *et al.*, 1997). *Arcobacter* spp. is often found in association with marine organisms—ranging from bottle-nosed dolphins (Lima *et al.*, 2012), marine seaweeds (Hollants *et al.*, 2011), crabs (Givens *et al.*, 2013), mussels (Collado *et al.*, 2009), abalones (Tanaka *et al.*, 2004) and oysters (Romero *et al.*, 2002). The  $\epsilon$ -Proteobacteria are usually rare in coastal seawater and sediments (Campbell *et al.*, 2011; Gobet *et al.*, 2012), and they were rare in recent studies of oyster stomach (King *et al.*, 2012), gut (Trabal Fernandez *et al.*, 2013) and gill microbiota (Wegner *et al.*, 2013). Thus, the high abundance of *Arcobacter* spp. here could mean that these strains represent hemolymph-specific symbionts, which were not investigated in previous studies of oyster microbiota. *Arcobacter* spp. are often microaerophilic (Vandamme and Deley, 1991) and growth in the oysters could be facilitated by periodical valve closing (Sow *et al.*, 2011) or high variation in respiratory time activity (Bougrier *et al.*, 1998)—both of which may promote microaerophilic conditions. Dominance of *Arcobacter* spp. in moribund oysters, on the other hand, might have been a consequence of increased hypoxia due to disease-induced reduction of filtration activity (McHenery and Birkbeck, 1986). Nevertheless, the high abundance of *Arcobacter* spp. strains in moribund oysters, starved abalones (Tanaka *et al.*, 2004) and necrotic sponges (Fan *et al.*, 2013) may suggest their potential as opportunistic pathogens when occurring in high enough densities (Olson *et al.*, 2014). Dominance of *Arcobacter* spp. in unhealthy animals resulted in low microbial diversity, in contrast to the diverse microbiomes of infection survivors, which were barely distinguishable from controls (Figures 3b and 4b). This might reflect the crossing of a resilience threshold that a healthy community has against disturbance (Lozupone *et al.*, 2012). We cannot directly relate microbiome stability to disease resistance, but low diversity has repeatedly been found to coincide with impaired health in various animals (Garnier *et al.*, 2007; Chang *et al.*, 2008; Green and Barnes, 2010).

#### *Microbial community dynamics in relation to infection and temperature stress*

Warm temperatures can lead to higher heterogeneity in microbiome composition (Erwin *et al.*, 2012; Boutin *et al.*, 2013) and stress can favor shift toward more pathogen-dominated communities (Boutin *et al.*, 2013). Thus, the lower community stability at 22 °C (Figure 4b) and temperature- or stress-related increase in potentially pathogenic bacteria (Supplementary File 2) could have contributed to the

observed mortality pattern. However, microbiomes often remain stable and pathogen-free even in stressful conditions (Erwin *et al.*, 2012; Simister *et al.*, 2012; Pita *et al.*, 2013; Wegner *et al.*, 2013), indicating their potential role in host acclimation (Rosenberg *et al.*, 2007). Phylogenetic similarity of the microbiomes suggests a common origin from the local seawater microbiota (Lozupone *et al.*, 2007). The drop in diversity following the transfer to the non-flow-through conditions was associated with a loss of rare and probably transient OTUs, underlining the importance of immigration for the assembly of the hemolymph microbiome. However, the persistence of relatively rare, presumably resident bacteria—such as *Vibrio* spp. (Pruzzo *et al.*, 2005)—contrasts the loss of transient OTUs (Romero *et al.*, 2002) and indicates that the hemolymph microbiome is not a simple result of filter-feeding lifestyle. While the individual stability indicates the importance of host genotype for the community assembly (Wegner *et al.*, 2013), the fine-scale differences between the treatments also illustrate acclimation potential of the hemolymph microbiome. Multiple competing ecotypes usually coexist in bacterial populations (Cohan and Koeppel, 2008) and even the isolates with virtually identical 16s rRNA sequences are sometimes adapted to very different conditions (Cohan and Koeppel, 2008; Hall *et al.*, 2010). We cannot determine bacterial activity (Campbell *et al.*, 2011) nor function (Salles *et al.*, 2012) based on 16s rDNA sequences; moreover, our coverage is insufficient to capture very rare bacteria and thus estimate the full potential for community acclimation (Sjostedt *et al.*, 2012). Nevertheless, relatively high persistence of bacterial residents and the adjustments in fine-scale community composition following the environmental change could represent the microbiome's way to buffer the impact of environmental stress. Shifts in composition of the endogenous OTUs can thus prevent growth of external pathogens (Sjostedt *et al.*, 2012; Froelich and Oliver, 2013) and contribute to the maintenance of homeostasis.

The microbiome of warm-acclimated oysters might have been influenced by their extended time to acclimate to laboratory conditions. This bias would mainly influence day 0 samples, where we cannot discriminate between effects of temperature or acclimation. Since we can assume that cold acclimated oysters recovered from handling stress at the start of the experiment (Thompson *et al.*, 2012), we mainly focus on those results where oysters could unequivocally be assigned to experimental treatments (days 3–7) for our interpretation to avoid any such bias. During those stages of the experiment, the quick shift of communities in response to experimental conditions, the strong effect of experimental temperature (Supplementary Figures 2 and 3) and the similarity of microbiomes from surviving oysters in response to infection indicate that oyster history did not largely affect our results throughout the experiment.

Our detailed insight into short-term microbial dynamics of Pacific oyster hemolymph microbiota in response to environmental conditions and infection shows that temperature is indeed a master switch determining community structure and dynamics of oyster-associated microbiota. Microbial communities responded quickly to environmental change, but remained relatively stable within individuals for the duration of the experiment. Community disturbance by heat stress, coupled with host stress and faster bacterial growth at 22 °C may have acted in concert to cause high mortality rates. Stress can also amplify the direct immediate effects by giving rise to secondary opportunistic pathogens (for example, *Arcobacter*). Heat stress alone was not sufficient to cause mortality, showing that direct or indirect effects of pathogenic bacteria are necessary to induce mortality. To disentangle direct from indirect effects mediated by resident microbial communities further studies are needed for increasing the temporal resolution during the early phases of an infection to cover more bacterial communities associated with moribund oysters. The robustness of microbial communities against infection and plasticity in response to temperature suggest that the hemolymph microbiome can indeed have a vital role for host defense in changing environments.

## Conflict of Interest

The authors declare no conflict of interest.

## Acknowledgements

We thank Carolin C Wendling for *Vibrio* sp. sequences and the sequencing group of the Institute of Clinical Molecular Biology (IKMB) at the Christian-Albrechts-University Kiel for performing 454 sequencing. The group received infrastructural funding from the DFG Clusters of Excellence Future Ocean and Inflammation at Interfaces. This study was supported by the DFG (Deutsche Forschungsgemeinschaft) Emmy Noether Programme (We4641/1-3) and International Max Planck Research School for Evolutionary Biology.

## References

Altizer S, Harvell D, Friedle E. (2003). Rapid evolutionary dynamics and disease threats to biodiversity. *Trends Ecol Evol* **18**: 589–596.

Altizer S, Ostfeld RS, Johnson PT, Kutz S, Harvell CD. (2013). Climate change and infectious diseases: from evidence to a predictive framework. *Science* **341**: 514–519.

Anderson MJ. (2001). A new method for non-parametric multivariate analysis of variance. *Austral Ecol* **26**: 32–46.

Ashton-Alcox KA, Ford SE. (1998). Variability in molluscan hemocytes: a flow cytometric study. *Tissue Cell* **30**: 195–204.

Bachere E, Gueguen Y, Gonzalez M, De Lorgeril J, Garnier J, Romestand B. (2004). Insights into the anti-microbial defense of marine invertebrates: the penaeid shrimps and the oyster *Crassostrea gigas*. *Immunol Rev* **198**: 149–168.

Beleneva I, Zhukova N. (2009). Seasonal dynamics of cell numbers and biodiversity of marine heterotrophic bacteria inhabiting invertebrates and water ecosystems of the Peter the Great Bay, Sea of Japan. *Microbiology* **78**: 369–375.

Bent SJ, Forney LJ. (2008). The tragedy of the uncommon: understanding limitations in the analysis of microbial diversity. *ISME J* **2**: 689–695.

Binladen J, Gilbert MTP, Bollback JP, Panitz F, Bendixen C, Nielsen R *et al.* (2007). The use of coded PCR primers enables high-throughput sequencing of multiple homolog amplification products by 454 parallel sequencing. *PLoS One* **2**: e197.

Bougrier S, Geairon P, Deslous-Paoli J, Bacher C, Jonquières G. (1995). Allometric relationships and effects of temperature on clearance and oxygen consumption rates of *Crassostrea gigas* (Thunberg). *Aquaculture* **134**: 143–154.

Bougrier S, Collet B, Geairon P, Geffard O, Heral M, Deslous-Paoli JM. (1998). Respiratory time activity of the Japanese oyster *Crassostrea gigas* (Thunberg). *J Exp Mar Biol Ecol* **219**: 205–216.

Boutin S, Bernatchez L, Audet C, Derôme N. (2013). Network analysis highlights complex interactions between pathogen, host and commensal microbiota. *PLoS One* **8**: e84772.

Cáceres M, Legendre P. (2009). Associations between species and groups of sites: indices and statistical inference. *Ecology* **90**: 3566–3574.

Cai L, Ye L, Tong A, Lok S, Zhang T. (2013). Biased diversity metrics revealed by bacterial 16S pyrotags derived from different primer sets. *PLoS One* **8**: e53649.

Campbell BJ, Yu L, Heidelberg JF, Kirchman DL. (2011). Activity of abundant and rare bacteria in a coastal ocean. *Proc Natl Acad Sci USA* **108**: 12776–12781.

Caporaso JG, Kuczynski J, Stombaugh J, Bittinger K, Bushman FD, Costello EK *et al.* (2010). QIIME allows analysis of high-throughput community sequencing data. *Nat Methods* **7**: 335–336.

Caporaso JG, Paszkiewicz K, Field D, Knight R, Gilbert JA. (2012). The Western English Channel contains a persistent microbial seed bank. *ISME J* **6**: 1089–1093.

Carlos C, Torres TT, Ottoboni LM. (2013). Bacterial communities and species-specific associations with the mucus of Brazilian coral species. *Sci Rep* **3**: 1624.

Cerf-Bensussan N, Gaboriau-Routhiau V. (2010). The immune system and the gut microbiota: friends or foes? *Nat Rev Immunol* **10**: 735–744.

Cervino JM, Thompson FL, Gomez-Gil B, Lorence EA, Goreau TJ, Hayes RL *et al.* (2008). The *Vibrio* core group induces yellow band disease in Caribbean and Indo-Pacific reef-building corals. *J Appl Microbiol* **105**: 1658–1671.

Chang JY, Antonopoulos DA, Kalra A, Tonelli A, Khalife WT, Schmidt TM *et al.* (2008). Decreased diversity of the fecal Microbiome in recurrent *Clostridium difficile*-associated diarrhea. *J Infect Dis* **197**: 435–438.

Cohan FM, Koeppl AF. (2008). The origins of ecological diversity in prokaryotes. *Curr Biol* **18**: R1024–R1034.

Collado L, Cleenwerck I, Van Trappen S, De Vos P, Figueras MJ. (2009). *Arcobacter mytili* sp. nov., an

- indoxyl acetate-hydrolysis-negative bacterium isolated from mussels. *Int J Syst Evol Microbiol* **59**: 1391–1396.
- Defer D, Desriac F, Henry J, Bourgougnon N, Baudy-Floc'h M, Brilllet B *et al.* (2013). Antimicrobial peptides in oyster hemolymph: the bacterial connection. *Fish Shellfish Immunol* **34**: 1439–1447.
- Edgar RC. (2010). Search and clustering orders of magnitude faster than BLAST. *Bioinformatics* **26**: 2460–2461.
- Elston RA, Hasegawa H, Humphrey KL, Polyak IK, Hase CC. (2008). Re-emergence of *Vibrio tubiashii* in bivalve shellfish aquaculture: severity, environmental drivers, geographic extent and management. *Dis Aquat Organ* **82**: 119–134.
- Erwin PM, Pita L, Lopez-Legentil S, Turon X. (2012). Stability of sponge-associated bacteria over large seasonal shifts in temperature and irradiance. *Appl Environ Microbiol* **78**: 7358–7368.
- Faith DP. (1992). Systematics and conservation - on predicting the feature diversity of subsets of taxa. *Cladistics* **8**: 361–373.
- Fan L, Liu M, Simister R, Webster NS, Thomas T. (2013). Marine microbial symbiosis heats up: the phylogenetic and functional response of a sponge holobiont to thermal stress. *ISME J* **7**: 991–1002.
- Farcy E, Voiseux C, Lebel JM, Fievet B. (2007). Seasonal changes in mRNA encoding for cell stress markers in the oyster *Crassostrea gigas* exposed to radioactive discharges in their natural environment. *Sci Total Environ* **374**: 328–341.
- Fierer N, Lennon JT. (2011). The generation and maintenance of diversity in microbial communities. *Am J Bot* **98**: 439–448.
- Froelich B, Oliver J. (2013). Increases in the amounts of *Vibrio* spp. in oysters upon addition of exogenous bacteria. *Appl Environ Microbiol* **79**: 5208–5213.
- Fuhrman JA, Steele JA, Hewson I, Schwalbach MS, Brown MV, Green JL *et al.* (2008). A latitudinal diversity gradient in planktonic marine bacteria. *Proc Natl Acad Sci USA* **105**: 7774–7778.
- Gagnaire B, Frouin H, Moreau K, Thomas-Guyon H, Renault T. (2006). Effects of temperature and salinity on haemocyte activities of the Pacific oyster, *Crassostrea gigas* (Thunberg). *Fish Shellfish Immunol* **20**: 536–547.
- Garnier M, Labreuche Y, Garcia C, Robert M, Nicolas JL. (2007). Evidence for the involvement of pathogenic bacteria in summer mortalities of the Pacific oyster *Crassostrea gigas*. *Microb Ecol* **53**: 187–196.
- Gilbert JA, Steele JA, Caporaso JG, Steinbruck L, Reeder J, Temperton B *et al.* (2012). Defining seasonal marine microbial community dynamics. *ISME J* **6**: 298–308.
- Givens CE, Burnett KG, Burnett LE, Hollibaugh JT. (2013). Microbial communities of the carapace, gut, and hemolymph of the Atlantic blue crab, *Callinectes sapidus*. *Mar Biol* **160**: 2841–2851.
- Gobet A, Boer SI, Huse SM, van Beusekom JE, Quince C, Sogin ML *et al.* (2012). Diversity and dynamics of rare and of resident bacterial populations in coastal sands. *ISME J* **6**: 542–553.
- Gomez-Gil B, Tron-Mayen L, Roque A, Turnbull J, Inglis V, Guerra-Flores A. (1998). Species of *Vibrio* isolated from hepatopancreas, haemolymph and digestive tract of a population of healthy juvenile *Penaeus vannamei*. *Aquaculture* **163**: 1–9.
- Gomez-Gil B, Roque A, Lacuesta B, Rotllant G. (2010). Diversity of vibrios in the haemolymph of the spider crab *Maja brachydactyla*. *J Appl Microbiol* **109**: 918–926.
- Green TJ, Barnes AC. (2010). Bacterial diversity of the digestive gland of Sydney rock oysters, *Saccostrea glomerata* infected with the paramyxean parasite, *Marteilia sydneyi*. *J Appl Microbiol* **109**: 613–622.
- Hall EK, Singer GA, Kainz MJ, Lennon JT. (2010). Evidence for a temperature acclimation mechanism in bacteria: an empirical test of a membrane-mediated trade-off. *Funct Ecol* **24**: 898–908.
- Hamady M, Lozupone C, Knight R. (2010). Fast UniFrac: facilitating high-throughput phylogenetic analyses of microbial communities including analysis of pyrosequencing and PhyloChip data. *ISME J* **4**: 17–27.
- Hauton C, Williams J, Hawkins L. (1997). The effects of a live in vivo pathogenic infection on aspects of the immunocompetence of the common shore crab, *Carcinus maenas* (L.). *J Exp Mar Biol Ecol* **211**: 115–128.
- Hollants J, Leroux O, Leliaert F, Decleyre H, De Clerck O, Willems A. (2011). Who is in there? Exploration of endophytic bacteria within the siphonous green seaweed *Bryopsis* (Bryopsidales, Chlorophyta). *PLoS One* **6**: e26458.
- Huse SM, Dethlefsen L, Huber JA, Mark Welch D, Relman DA, Sogin ML. (2008). Exploring microbial diversity and taxonomy using SSU rRNA hypervariable tag sequencing. *PLoS Genet* **4**: e1000255.
- Iida Y, Honda R, Nishihara M, Muroga K. (2000). Bacterial flora in the digestive tract of cultured Pacific oyster. *Fish Pathol* **35**: 173–177.
- Kamada N, Chen GY, Inohara N, Nunez G. (2013). Control of pathogens and pathobionts by the gut microbiota. *Nat Immunol* **14**: 685–690.
- Katoh K, Misawa K, Kuma K, Miyata T. (2002). MAFFT: a novel method for rapid multiple sequence alignment based on fast Fourier transform. *Nucleic Acids Res* **30**: 3059–3066.
- Kimes NE, Grim CJ, Johnson WR, Hasan NA, Tall BD, Kothary MH *et al.* (2012). Temperature regulation of virulence factors in the pathogen *Vibrio coralliilyticus*. *ISME J* **6**: 835–846.
- King GM, Judd C, Kuske CR, Smith C. (2012). Analysis of stomach and gut microbiomes of the eastern oyster (*Crassostrea virginica*) from coastal Louisiana, USA. *PLoS One* **7**: e51475.
- Knight R, Maxwell P, Birmingham A, Carnes J, Caporaso JG, Easton BC *et al.* (2007). PyCogent: a toolkit for making sense from sequence. *Genome Biol* **8**: R171.
- Kushmaro A, Rosenberg E, Fine M, Ben Haim Y, Loya Y. (1998). Effect of temperature on bleaching of the coral *Oculina patagonica* by *Vibrio* AK-1. *Mar Ecol Prog Ser* **171**: 131–137.
- Lacoste A, Jalabert F, Malham S, Cueff A, Gelebart F, Cordevant C *et al.* (2001). A *Vibrio splendidus* strain is associated with summer mortality of juvenile oysters *Crassostrea gigas* in the Bay of Morlaix (North Brittany, France). *Dis Aquat Organ* **46**: 139–145.
- Lafferty KD, Porter JW, Ford SE. (2004). Are diseases increasing in the ocean?\*. *Annu Rev Ecol Evol Syst* **35**: 31–54.
- Lee KK, Liu PC, Chen YC, Huang CY. (2001). The implication of ambient temperature with the outbreak of vibriosis in cultured small abalone *Haliotis diversicolor supertexta* Lischke. *J Therml Biol* **26**: 585–587.
- Lima N, Rogers T, Acevedo-Whitehouse K, Brown MV. (2012). Temporal stability and species specificity in bacteria associated with the bottlenose dolphins respiratory system. *Environ Microbiol Rep* **4**: 89–96.

- Lozupone CA, Hamady M, Kelley ST, Knight R. (2007). Quantitative and qualitative beta diversity measures lead to different insights into factors that structure microbial communities. *Appl Environ Microbiol* **73**: 1576–1585.
- Lozupone CA, Stombaugh JI, Gordon JI, Jansson JK, Knight R. (2012). Diversity, stability and resilience of the human gut microbiota. *Nature* **489**: 220–230.
- Mahalaxmi B, Revathy K, Raghunathan C, Anjalai K, Suabshini A. (2013). Distribution of microbial population associated with crabs from Ennore seacoast Bay of Bengal north east coast of India. *Int J Curr Microbiol Appl Sci* **2**: 290–305.
- Malham S, Cotter E, O’Keeffe S, Lynch S, Culloty S, King J *et al.* (2009). Summer mortality of the Pacific oyster, *Crassostrea gigas*, in the Irish Sea: the influence of temperature and nutrients on health and survival. *Aquaculture* **287**: 128–138.
- McDonald D, Price MN, Goodrich J, Nawrocki EP, DeSantis TZ, Probst A *et al.* (2012). An improved Greengenes taxonomy with explicit ranks for ecological and evolutionary analyses of bacteria and archaea. *ISME J* **6**: 610–618.
- McFall-Ngai M, Hadfield MG, Bosch TC, Carey HV, Domazet-Looso T, Douglas AE *et al.* (2013). Animals in a bacterial world, a new imperative for the life sciences. *Proc Natl Acad Sci USA* **110**: 3229–3236.
- McHenerly JG, Birkbeck TH. (1986). Inhibition of filtration in *Mytilus edulis* L. by marine vibrios. *J Fish Dis* **9**: 257–261.
- Oksanen J, Blanchet FG, Kindt R, Legendre P, Minchin PR, O’Hara RB *et al.* (2013). vegan: Community Ecology Package, R package version 2.0-7 edn.
- Olafsen JA, Mikkelsen HV, Glaever HM, Hansen GH. (1993). Indigenous bacteria in hemolymph and tissues of marine bivalves at low-temperatures. *Appl Environ Microbiol* **59**: 1848–1854.
- Olson JB, Thacker RW, Gochfeld DJ. (2014). Molecular community profiling reveals impacts of time, space, and disease status on the bacterial community associated with the Caribbean sponge *Aplysina cauliformis*. *FEMS Microbiol Ecol* **87**: 268–279.
- Paillard C, Allam B, Oubella R. (2004). Effect of temperature on defense parameters in manila clam *Ruditapes philippinarum* challenged with *Vibrio tapetis*. *Dis Aquat Organ* **59**: 249–262.
- Parisi MG, Li H, Jouvett LB, Dyrnynda EA, Parrinello N, Cammarata M *et al.* (2008). Differential involvement of mussel hemocyte sub-populations in the clearance of bacteria. *Fish Shellfish Immunol* **25**: 834–840.
- Pedros-Alio C. (2006). Marine microbial diversity: can it be determined? *Trends Microbiol* **14**: 257–263.
- Pedros-Alio C. (2012). The rare bacterial biosphere. *Ann Rev Mar Sci* **4**: 449–466.
- Pinheiro J, Bates D, DebRoy S, Sarkar D, R Development Core Team. (2013). nlme: Linear and Nonlinear Mixed Effects Models, R package version 3.1-110 edn.
- Pita L, Erwin PM, Turon X, Lopez-Legentil S. (2013). Till Death Do Us Part: stable sponge-bacteria associations under thermal and food shortage stresses. *PLoS One* **8**: e80307.
- Preheim SP, Boucher Y, Wildschutte H, David LA, Veneziano D, Alm EJ *et al.* (2011). Metapopulation structure of Vibrionaceae among coastal marine invertebrates. *Environ Microbiol* **13**: 265–275.
- Price MN, Dehal PS, Arkin AP. (2010). FastTree 2—approximately maximum-likelihood trees for large alignments. *PLoS One* **5**: e9490.
- Prieur D, Nicolas JL, Plusquellec A, Vigneulle M. (1990). Interactions between bivalve mollusks and bacteria in the marine-environment. *Oceanogr Mar Biol* **28**: 277–352.
- Pruzzo C, Gallo G, Canesi L. (2005). Persistence of vibrios in marine bivalves: the role of interactions with haemolymph components. *Environ Microbiol* **7**: 761–772.
- Quince C, Lanzen A, Davenport RJ, Turnbaugh PJ. (2011). Removing noise from pyrosequenced amplicons. *BMC Bioinformatics* **12**: 38.
- R Core Team (2013). *R: A Language and Environment for Statistical Computing*. R Foundation for Statistical Computing: Vienna, Austria.
- Ritchie KB. (2006). Regulation of microbial populations by coral surface mucus and mucus-associated bacteria. *Mar Ecol Prog Ser* **322**: 1–14.
- Romero J, Garcia-Varela M, Lacleste JP, Espejo RT. (2002). Bacterial 16S rRNA gene analysis revealed that bacteria related to *Arcobacter* spp. constitute an abundant and common component of the oyster microbiota (*Tiostrea chilensis*). *Microb Ecol* **44**: 365–371.
- Rosenberg E, Koren O, Reshef L, Efrony R, Zilber-Rosenberg I. (2007). The role of microorganisms in coral health, disease and evolution. *Nat Rev Microbiol* **5**: 355–362.
- Salles JF, Le Roux X, Poly F. (2012). Relating phylogenetic and functional diversity among denitrifiers and quantifying their capacity to predict community functioning. *Front Microbiol* **3**: 209.
- Samain JF, Degremont L, Soletchnik P, Haure J, Bedier E, Ropert M *et al.* (2007). Genetically based resistance to summer mortality in the Pacific oyster (*Crassostrea gigas*) and its relationship with physiological, immunological characteristics and infection processes. *Aquaculture* **268**: 227–243.
- Sow M, Durrieu G, Briollais L, Ciret P, Massabuau JC. (2011). Water quality assessment by means of HFNI valvometry and high-frequency data modeling. *Environ Monit Assess* **182**: 155–170.
- Schloss PD, Westcott SL, Ryabin T, Hall JR, Hartmann M, Hollister EB *et al.* (2009). Introducing mothur: open-source, platform-independent, community-supported software for describing and comparing microbial communities. *Appl Environ Microbiol* **75**: 7537–7541.
- Schmitt P, Rosa RD, Duperthuy M, de Lorgeril J, Bachere E, Destoumieux-Garzon D. (2012). The Antimicrobial Defense of the Pacific Oyster, *Crassostrea gigas*. How diversity may compensate for scarcity in the regulation of resident/pathogenic microflora. *Front Microbiol* **3**: 160.
- Sergeant MJ, Constantinidou C, Cogan T, Penn CW, Pallen MJ. (2012). High-throughput sequencing of 16S rRNA gene amplicons: effects of extraction procedure, primer length and annealing temperature. *PLoS One* **7**: e38094.
- Simister R, Taylor MW, Tsai P, Fan L, Bruxner TJ, Crowe ML *et al.* (2012). Thermal stress responses in the bacterial biosphere of the Great Barrier Reef sponge, *Rhopaloeides odorabile*. *Environ Microbiol* **14**: 3232–3246.
- Sjostedt J, Koch-Schmidt P, Pontarp M, Canback B, Tunlid A, Lundberg P *et al.* (2012). Recruitment of members from

- the rare biosphere of marine bacterioplankton communities after an environmental disturbance. *Appl Environ Microbiol* **78**: 1361–1369.
- Tanaka R, Ootsubo M, Sawabe T, Ezura Y, Tajima K. (2004). Biodiversity and in situ abundance of gut microflora of abalone (*Haliotis discus hannai*) determined by culture-independent techniques. *Aquaculture* **241**: 453–463.
- Therneau TM. (2013). A Package for Survival Analysis in S, R package version 2.37-4 edn.
- Thieltges DW, Engelsma MY, Wendling CC, Wegner KM. (2013). Parasites in the Wadden Sea food web. *J Sea Res* **82**: 122–133.
- Thomas MB, Blanford S. (2003). Thermal biology in insect-parasite interactions. *Trends Ecol Evol* **18**: 344–350.
- Thompson EL, Taylor DA, Nair SV, Birch G, Coleman R, Raftos DA. (2012). Optimal acclimation periods for oysters in laboratory-based experiments. *J Mollus Stud* **78**: 304–307.
- Trabal N, Mazon-Suastegui JM, Vazquez-Juarez R, Asencio-Valle F, Morales-Bojorquez E, Romero J. (2012). Molecular analysis of bacterial microbiota associated with oysters (*Crassostrea gigas* and *Crassostrea corteziensis*) in different growth phases at two cultivation sites. *Microb Ecol* **64**: 555–569.
- Trabal Fernandez N, Mazon-Suastegui JM, Vazquez-Juarez R, Asencio-Valle F, Romero J. (2013). Changes in the composition and diversity of the bacterial microbiota associated with oysters (*Crassostrea corteziensis*, *Crassostrea gigas* and *Crassostrea sikamea*) during commercial production. *FEMS Microbiol Ecol* **88**: 69–83.
- Travers MA, Le Goic N, Huchette S, Koken M, Paillard C. (2008). Summer immune depression associated with increased susceptibility of the European abalone, *Haliotis tuberculata* to *Vibrio harveyi* infection. *Fish Shellfish Immunol* **25**: 800–808.
- Vandamme P, Deley J. (1991). Proposal for a New Family, Campylobacteraceae. *Int J Syst Bacteriol* **41**: 451–455.
- Vega Thurber R, Willner-Hall D, Rodriguez-Mueller B, Desnues C, Edwards RA, Angly F *et al.* (2009). Metagenomic analysis of stressed coral holobionts. *Environ Microbiol* **11**: 2148–2163.
- Wang Q, Garrity GM, Tiedje JM, Cole JR. (2007). Naive Bayesian classifier for rapid assignment of rRNA sequences into the new bacterial taxonomy. *Appl Environ Microbiol* **73**: 5261–5267.
- Wang X, Wang L, Zhang H, Ji Q, Song L, Qiu L *et al.* (2012). Immune response and energy metabolism of *Chlamys farreri* under *Vibrio anguillarum* challenge and high temperature exposure. *Fish Shellfish Immunol* **33**: 1016–1026.
- Watermann BT, Herlyn M, Daehne B, Bergmann S, Meemken M, Kolodzey H. (2008). Pathology and mass mortality of Pacific oysters, *Crassostrea gigas* (Thunberg), in 2005 at the East Frisian coast, Germany. *J Fish Dis* **31**: 621–630.
- Wegner KM. (2009). Massive parallel MHC genotyping: titanium that shines. *Mol Ecol* **18**: 1818–1820.
- Wegner KM, Volkenborn N, Peter H, Eiler A. (2013). Disturbance induced decoupling between host genetics and composition of the associated microbiome. *BMC Microbiol* **13**: 252.
- Wendling CC, Batista FM, Wegner MK. (2014). Persistence, seasonal dynamics and pathogenic potential of *Vibrio* communities from Pacific oyster hemolymph. *PLoS One* **9**: e94256.
- Wendling CC, Wegner KM. (2013). Relative contribution of reproductive investment, thermal stress and *Vibrio* infection to summer mortality phenomena in Pacific oysters. *Aquaculture* **412**: 88–96.
- Williams HR, Macey BM, Burnett LE, Burnett KG. (2009). Differential localization and bacteriostasis of *Vibrio campbellii* among tissues of the Eastern oyster, *Crassostrea virginica*. *Dev Comp Immunol* **33**: 592–600.
- Zhao J, Shi B, Jiang QR, Ke CH. (2012). Changes in gut-associated flora and bacterial digestive enzymes during the development stages of abalone (*Haliotis diversicolor*). *Aquaculture* **338**: 147–153.
- Zurel D, Benayahu Y, Or A, Kovacs A, Gophna U. (2011). Composition and dynamics of the gill microbiota of an invasive Indo-Pacific oyster in the eastern Mediterranean Sea. *Environ Microbiol* **13**: 1467–1476.

Supplementary Information accompanies this paper on The ISME Journal website (<http://www.nature.com/ismej>)