

# Master Track RV Polarstern ANT-XIX/5

## Data Processing Report

### Contents

|          |                          |          |
|----------|--------------------------|----------|
| <b>1</b> | <b>Introduction</b>      | <b>1</b> |
| <b>2</b> | <b>Workflow</b>          | <b>1</b> |
| <b>3</b> | <b>Sensor Layout</b>     | <b>2</b> |
| <b>4</b> | <b>Processing Report</b> | <b>3</b> |

Contact:

Dr. Rainer Knust

Alfred Wegener Institute

Columbusstrasse, D-27568 Bremerhaven, GERMANY

Tel: +49(471)4831-1709

Fax: +49(471)4831-1918

Mail: Polarstern-Coordination@awi.de

Processing Agency:

FIELAX

Gesellschaft für wissenschaftliche Datenverarbeitung mbH

Schleusenstr. 14, D-27568 Bremerhaven, GERMANY

Tel: +49 (0) 471 30015 0

Fax: +49 (0) 471 30015 22

Mail: info@fielax.de

|                       |          |                  |               |
|-----------------------|----------|------------------|---------------|
| Ref.: ANT19_5_nav.pdf | Vers.: 1 | Date: 2015/08/21 | Status: final |
|-----------------------|----------|------------------|---------------|

# 1 Introduction

This report describes the processing of raw data acquired by position sensors on board RV Polarstern during expedition ANT-XIX/5 to receive a validated master track which is used as reference of further expedition data.

# 2 Workflow

The different steps of processing and validation are visualized in figure 1. Unvalidated data of up to three sensors and ship-motion data are extracted from the DAVIS SHIP data base (<https://dship.awi.de>) in a 1-second interval. They are converted to ESRI point shapefiles and imported to ArcGIS. A visual screening is performed to evaluate data quality and remove outliers manually. The position data from each position sensor are centered to the destined master track origin by applying ship-motion data (angles of roll, pitch and heading) and lever arms. For all three resulting position tracks, a quality check is performed using a ship's speed filter and an acceleration filter. Filtered positions are flagged. In addition, a manual check is performed to flag obvious outliers. Those position tracks are combined to a single master track depending on a sensor priority list (by accuracy, reliability) and availability / applied exclusion of automatically or manually flagged of data. Missing data up to a time span of 60 seconds are linearly interpolated. To reduce the amount of points for overview maps the master track is generalized by using the Ramer-Douglas-Peucker algorithm. This algorithm returns only the most significant points from the track. Full master track and generalized master track are written to text files and imported to PANGAEA (<http://www.pangaea.de>) for publication.



Figure 1: Workflow of master track data processing

### 3 Sensor Layout

This chapter describes the position sensors mounted during this cruise.

#### Cruise details

|                               |  |
|-------------------------------|--|
| Vessel name                   | RV Polarstern  |
| Cruise name                   | ANT-XIX/5  |
| Cruise start                  | 03.04.2002 Punta Arenas  |
| Cruise end                    | 05.05.2002 Punta Arenas  |
| Cruise duration               | 33 days  |
| Master track reference point: | Resulting master track is referenced to <i>MINS installation point</i> . |

#### Position sensors

|                     |   |
|---------------------|---|
| Sensor name         | <b>Raytheon Anschuetz MINS2</b> , short: MINS   |
| Description         | Marine inertial navigation system with reference positions from Trimble DGPS  |
| Accuracy            | < 60 m CEP50 (with SPS GPS)   |
| Installation point  | Gravimeter room on F-Deck, close to COG   |
| Installation offset | Offset from master track reference point to sensor installation point<br>X Positive to bow 0.000 m<br>Y Positive to starboard 0.000 m<br>Z Positive upwards 0.000 m |

|                     |  |
|---------------------|--|
| Sensor name         | <b>Trimble Marine SPS461 (1)</b> , short: Trimble 1  |
| Description         | DGPS-Receiver, correction type DGPS RTCM 2.x, correction source DGPS Base via radio  |
| Accuracy            | Horizontal: $\pm 0.25$ m + 1 ppm & Vertical: $\pm 0.50$ m + 1 ppm  |
| Installation point  | Observation deck (starboard)   |
| Installation offset | Offset from master track reference point to sensor installation point<br>X Positive to bow 22.777 m<br>Y Positive to starboard -5.460 m<br>Z Positive upwards 21.525 m |

|                     |  |
|---------------------|--|
| Sensor name         | <b>Trimble Marine SPS461 (2)</b> , short: Trimble 2  |
| Description         | DGPS-Receiver, correction type DGPS RTCM 2.x, correction source DGPS Base via radio  |
| Accuracy            | Horizontal: $\pm 0.25$ m + 1 ppm & Vertical: $\pm 0.50$ m + 1 ppm  |
| Installation point  | Observation deck (port)  |
| Installation offset | Offset from master track reference point to sensor installation point<br>X Positive to bow 16.527 m<br>Y Positive to starboard 12.408 m<br>Z Positive upwards 21.538 m |

### Motion sensor

|                    |  |
|--------------------|--|
| Sensor name        | <b>Raytheon Anschuetz MINS2</b> , short: MINS                                |
| Description        | Marine inertial navigation system with reference positions from Trimble DGPS |
| Accuracy           | $\pm 0.02^\circ$ roll, $\pm 0.02^\circ$ pitch, $\pm 0.05^\circ$ heading      |
| Installation point | Gravimeter room on F-Deck, close to COG                                      |

## 4 Processing Report

### Database Extraction

|                 |                               |
|-----------------|-------------------------------|
| Data source     | DSHIP database (dship.awi.de) |
| Exported values | 2851141                       |
| First dataset   | 2002-04-03T00:32:37 UTC       |
| Last dataset    | 2002-05-05T23:59:00 UTC       |

### Centering & Motion Compensation

Each position track has been centered to the *MINS installation point* by applying the correspondent motion angles for heading, roll and pitch as well as the installation offsets from chapter 2. The motion data were acquired by Raytheon Anschuetz MINS2.

### Automatic Validation

The following thresholds were applied for the automatic flagging of the position data:

|                  |   |
|------------------|---|
| Speed            | Maximum 20 kn between two datapoints.             |
| Acceleration     | Maximum $1 \text{ m/s}^2$ between two datapoints. |
| Change of course | Maximum $5^\circ$ between two datapoints.         |

## Manual Validation

Obvious outliers were removed manually. For details see Processing Logbook of RV Polarstern (hdl:10013/epic.45909).

## Flagging result

|              | MINS    |         | Trimble 1 |         | Trimble 2 |         |
|--------------|---------|---------|-----------|---------|-----------|---------|
| Missing      | 16234   | 0.569%  | 33852     | 1.187%  | 27362     | 0.960%  |
| Speed        | 31796   | 1.115%  | 30735     | 1.078%  | 10753     | 0.377%  |
| Acceleration | 873945  | 30.652% | 148817    | 5.220%  | 42065     | 1.475%  |
| Course       | 1115898 | 39.139% | 902649    | 31.659% | 560683    | 19.665% |
| Manually     | 0       | 0.000%  | 0         | 0.000%  | 0         | 0.000%  |

## Master Track Generation

The master track is derived from the position sensors' data selected by priority.

Sensor priority used:

1. Trimble 2
2. Trimble 1
3. MINS

Filters applied: manual, speed, acceleration, course.

Distribution of position sensor data in master track:

| Sensor       | Data points | Percentage |
|--------------|-------------|------------|
| Total        | 2849184     | 99.931 %   |
| MINS         | 0           | 0.000 %    |
| Trimble 1    | 178910      | 6.279 %    |
| Trimble 2    | 2257066     | 79.218 %   |
| Interpolated | 390136      | 13.693 %   |
| Gaps         | 23072       | 0.810 %    |

## Remarks

None.

## Score

For each cruise, a score is calculated ranging from 0 (no data) to 100 (only very good data). the score for the cruise ANT-XIX/5 is 92.

## Generalization

The master track is generalized to receive a reduced set of the most significant positions of the track using the Ramer-Douglas-Peucker algorithm and allow a maximum tolerated distance between points and generalized line of 4 arcseconds.

Results:

|                              |             |
|------------------------------|-------------|
| Number of generalized points | 2171 points |
| Data reduction               | 99.9238 %   |

## Result files

### Report in XML format:

The XML contains all information of the master track generation in a machine-readable format. In addition a XSD schema file is provided.

### Master track text file:

The format is a plain text (tab-delimited values) file with one data row in 1 second interval.

|                  |   |                    |
|------------------|---|--------------------|
| Column separator | Tabulator "\t"                                |                    |
| Column 1         | Date and time expressed according to ISO 8601 |                    |
| Column 3         | Latitude in decimal format, unit degree       |                    |
| Column 4         | Longitude in decimal format, unit degree      |                    |
| Column 5         | Flag for data source                          |                    |
|                  | 1   | MINS               |
|                  | 2   | Trimble 1          |
|                  | 3   | Trimble 2          |
|                  | INTERP  | Interpolated point |
|                  | GAP   | Missing data       |

### Text file of the generalized master track:

The format is a plain text (tab-delimited values) file.

|                  |   |
|------------------|---|
| Column separator | Tabulator "\t"                                |
| Column 1         | Date and time expressed according to ISO 8601 |
| Column 2         | Latitude in decimal format, unit degree       |
| Column 3         | Longitude in decimal format, unit degree      |

### Processing Report:

This PDF document.

### Cruise map

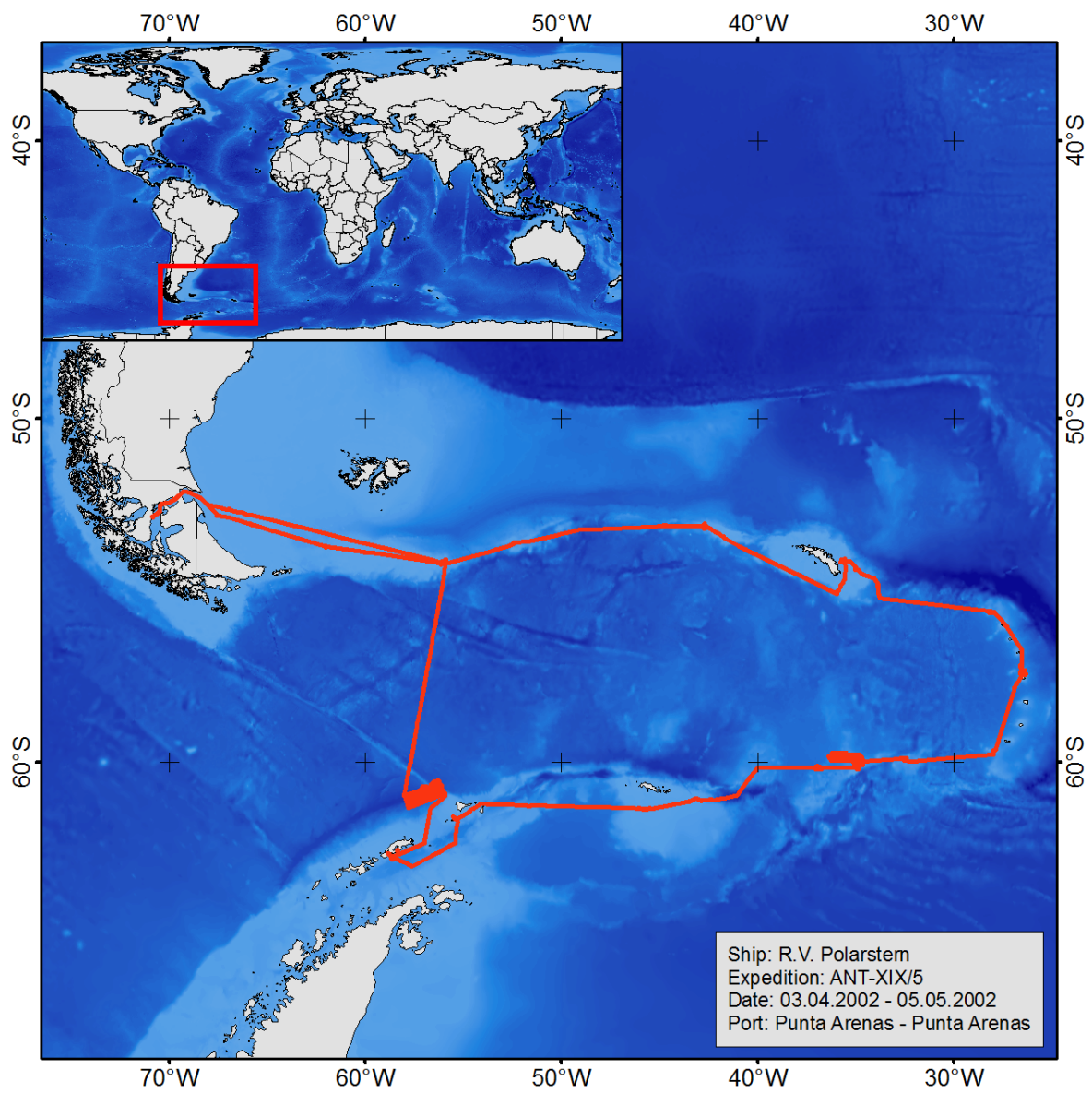


Figure 2: Map of the generalized master track