

ARTICLE

## A bloom of *Azadinium polongum* in coastal waters off Peru

Floración de *Azadinium polongum* en aguas costeras del Perú

Urban Tillmann<sup>1\*</sup>, Sonia Sánchez-Ramírez<sup>2</sup>, Bernd Krock<sup>1</sup> and Avy Bernales-Jiménez<sup>2</sup>

<sup>1</sup>Alfred Wegener Institute for Polar and Marine Research, Am Handelshafen 12, D-27570 Bremerhaven, Germany. \*urban.tillmann@awi.de

<sup>2</sup>Laboratorio de Fitoplancton y Producción Primaria, IMARPE, Esquina Gamarra y Gral. Valle s/n Chucuito, Callao, Perú

**Resumen.** Las especies dinofíceas del género *Azadinium* son conocidas por la producción potencial de azaspirácidos (AZAs), un grupo de toxinas microalgales que pueden causar intoxicación a través de mariscos. El incremento de registros globales de *Azadinium* indican una distribución bastante amplia de este género, sin embargo los datos cuantitativos de abundancia de las especies de familia Amphidomataceae son difíciles de encontrar. Como parte del programa de monitoreo bio-oceanográfico en aguas costeras peruanas frente a Chancay, se detectó y muestreó en febrero de 2014 una floración densa de *Azadinium*, con una temperatura de agua de mar alrededor de 20,5 °C y una salinidad de 35. Este es el primer reporte de una floración de *Azadinium* en el océano Pacífico con densidades celulares de hasta un millón de células por litro causante de una decoloración del agua de mar. Usando microscopía electrónica de barrido, se determinó como taxón responsable a *Azadinium polongum*. Esta especie previamente había sido detectada sólo en las Islas Shetland (Atlántico norte), localidad tipo y descrita como no productora de AZA. La población observada en campo se ajustó al cultivo tipo Shetland en la mayoría de los aspectos morfológicos. Sin embargo, a diferencia de este tipo de cultivo de *Az. polongum*, la primera placa intercalar de la población observada en el Pacífico, en ningún caso, estuvo en contacto con la primera placa precingular. Más aún, el tamaño y la forma de la segunda placa intercalar fue ligeramente diferente y muy variable en la población del Pacífico, ocurriendo en casi igual abundancia en configuración cuadra (es decir, en contacto con cuatro placas) o configuración penta (en contacto con cinco placas), un rasgo no reportado para el cultivo tipo de *Az. polongum*. La cromatografía líquida acoplada con espectrometría de masa no detectó AZA por encima del nivel de detección en la muestra de la floración, indicando que la especie peruana de *Az. polongum* puede considerarse como no productora de AZA.

**Palabras clave:** Floración algal, *Azadinium*, Perú

**Abstract.** Species of the dinophycean genus *Azadinium* are known for their potential production of azaspiracids (AZAs), a group of microalgal toxins that can cause shellfish poisoning. Increase of global *Azadinium* records indicates a rather wide distribution, but quantitative abundance data of species of Amphidomataceae are hardly available. Within the Peruvian bio-oceanographic monitoring program we detected and sampled a dense bloom of *Azadinium* in Peruvian coastal waters off Chancay in February 2014 at a water temperature of about 20.5 °C and a salinity of 35. With water discoloration and cell densities of *Azadinium* up to 1 million cells per liter this is the first *Azadinium* bloom record for the Pacific. The causative taxon was determined using scanning electron microscopy as *Azadinium polongum*, a species previously recorded only from the type locality, the Shetland Islands (north Atlantic) and described as non-AZA producer. The field population conformed to the Shetland type culture in most morphological aspects. However, the first intercalary plate of the Pacific field population without exception was not in contact with the first precingular plate, which is different to the type culture of *Az. polongum*. Moreover, the size and shape of the median intercalary plate was slightly different and very variable in the Pacific population, and occurred in about equal abundance in quadra- (*i.e.*, in contact with four other plates) or in penta-configuration (*i.e.*, in contact with five other plates), a feature not reported for the type culture of *Az. polongum*. Liquid chromatography coupled with mass spectrometry revealed no AZA above detection level in the bloom sample, indicating that the Peruvian *Az. polongum* can be regarded as a non-AZA producer.

**Key words:** Algal bloom, *Azadinium*, Peru

---

### INTRODUCTION

The Humboldt Current flowing along the west coast of South America is one of the major systems of the world, where cold, nutrient-rich upwelling water drives extraordinarily high rates of primary and secondary productivity. Especially off the coast

of Peru, upwelling occurs year round sustaining large fish stocks of mainly anchovy [*Engraulis ringens* (Jenyns, 1842)] and other species such as jack mackerel [*Trachurus murphyi* (Nichols, 1920)] and chub mackerel [*Scomber japonicus* (Houttuyn,

1782)], thus making marine fisheries a key component of Peru's economy (Sánchez 2000). During strong upwelling periods occurring typically in winter and spring, diatoms dominate the system, whereas dinoflagellates and other smaller sized flagellates are found during relaxation periods typically in summer and autumn (Ochoa *et al.* 2010). Diatoms are known to support a high and efficient food web transfer of primary production to fish (Cushing 1989). In contrast, many Dinophyceae or other planktonic flagellates are known for the production of potent toxins and other bioactive compounds and may form Harmful Algal Blooms (HABs) causing human health problems, massive killing of fishes, birds or mammals, and/or other ecosystem disruptions (Smayda 1997, Hallegraeff 2003, 2014).

Reports of HABs for the Humboldt Current system are most common off central Peru where red tides have been linked to fish and bird mortalities since the early 1800s (Trainer *et al.* 2010). High biomass blooms often accompanied by water discoloration (locally known as 'aguajes') and anoxia were mainly due to blooms of *Akashiwo sanguinea* (K.Hirasaka) G.Hansen & Moestrup (as *Gymnodinium splendens* Lebour) (Rojas de Mendiola 1979) in the 1970s and also *Prorocentrum* Ehrenberg (*Prorocentrum micans* Ehrenberg, *Prorocentrum gracile* Schütt) and *Tripos* Bory (*Tripos furca* (Ehrenberg) F. Gómez, *Tripos fusus* (Ehrenberg) F.Gómez) in the following decades (Sánchez & Delgado 1996). In recent years there is cumulating evidence on the presence of dinoflagellate species which produce toxins, including species of *Dinophysis* Ehrenberg and *Alexandrium* Halim (Ochoa *et al.* 2010, Trainer *et al.* 2010). Paralytic shellfish poisoning (PSP) caused by saxitoxin and its derivatives is one of the major concerns worldwide (Anderson *et al.* 2012), and a first record of PSP toxins in Peruvian shellfish was reported in 2003 (Antinori *et al.* 2003). *Alexandrium peruvianum* (Balech & Mendiola) Balech & Tangen, now considered synonym of *Alexandrium ostenfeldii* (Paulsen) Balech & Tangen (Kremp *et al.* 2014), was described as *Gonyaulax peruviana* Balech & B.R.E. de Mendiola from Callao (Peru), where red tides of the species occurred (Rojas de Mendiola 1979, Sánchez *et al.* 2004<sup>1</sup>). More recently, other species of *Alexandrium* were reported in the area for the first time, including *Alexandrium affine* (H.Inoue & Y.Fukuyo) Balech (Vera *et al.* 1999), and the potentially toxic species *Alexandrium tamiyavanichi* Balech (Bárcena-Martínez *et al.* 2013) and *Alexandrium minutum* Halim (Baylón *et al.* 2015).

For these large and conspicuous species it is difficult to evaluate if they have been recently introduced to the area or if they - as low abundance background species - had been overlooked previously. A plankton species list of the Peruvian coastal waters included a total of 208 dinoflagellate species (Ochoa *et al.* 1999) with the majority of species assigned to two large and conspicuous thecate generic lineages *Tripos* (as *Ceratium*) and *Protoperidinium* R.S. Bergh. However, biodiversity and distribution of the smaller size class of plankton species most probably has not been fully explored in the past, as identification of smaller and less conspicuous dinophytes is quite difficult and in many cases requires electron microscopy. An illustrative example is the small dinophycean genus *Azadinium* Elbrächter & Tillmann (Amphidomataceae). This taxon was discovered in 2009 driven by the targeted search for the planktonic source of azaspiracids (AZAs) (Krock *et al.* 2009) with the first species described being *Azadinium spinosum* Elbrächter & Tillmann (Tillmann *et al.* 2009). AZAs are a group of lipophilic marine biotoxins associated with human incidents of shellfish poisoning. This group of compounds was first isolated and identified 18 years ago from Irish shellfish (Satake *et al.* 1998) but now has been reported from numerous geographical sites, including the Pacific coast of the United States (Trainer *et al.* 2013), and both the Atlantic and Pacific coasts of South America with records from Brazil (Massucatto *et al.* 2014), Argentina (Turner & Goya 2015), and Chile (Álvarez *et al.* 2010, López-Rivera *et al.* 2010).

The knowledge on the diversity of *Azadinium* has increased rapidly and today eleven species have been described (Tillmann & Akselman 2016). Within the genus *Azadinium*, three species have been found to produce AZAs (*i.e.*, *Azadinium spinosum*, *Azadinium poporum* Tillmann & Elbrächter, *Azadinium dexteroporum* I.Percopo & A.Zingone (Krock *et al.* 2012, Rossi *et al.* 2017). AZAs have also been found in the related species *Amphidoma languida* Tillmann, Salas & Elbrächter (Tillmann *et al.* 2012b).

Just as for records of AZA in shellfish there is increasing evidence that species of *Azadinium* and *Amphidoma* F.Stein seem to have a wide geographical distribution in both coastal and open ocean areas of Atlantic and Pacific Oceans (Tillmann & Akselman 2016). Records from the Pacific include Korea (Potvin *et al.* 2012), China (Gu *et al.* 2013, Luo *et al.* 2013), New Zealand (Smith *et al.* 2016), and recently also northern Chile (Tillmann *et al.* 2017).

<sup>1</sup>Sánchez S, P Villanueva & L Carbajo. 2004. Distribution and concentration of *Alexandrium peruvianum* (Balech and de Mendiola) in the Peruvian coast (03°24' -18°20' LS) between 1982-2004. In: Abstracts, XI International Conference on Harmful Algal Blooms, Cape Town, South Africa, November 15-19, 2004: p. 227.

Knowledge on the occurrence and distribution of species is quite patchy and incomplete, and quantitative abundance data of Amphidomataceae are hardly available. Nevertheless, they have the potential to form dense blooms, as has been observed for a species of *Azadinium* from the Argentinean shelf almost 25 years ago (Akselman & Negri 2012). One of these old Argentinean bloom populations has retrospectively been identified to represent a quite diverse assemblage of different species of *Azadinium* and *Amphidoma* (Tillmann & Akselman 2016). Also related to South America, toxic isolates of *Az. poporum* were recently obtained from the south Atlantic (Argentina: Tillmann *et al.* 2016) and from the northern part (Gulf of Mexico: Luo *et al.* 2016). On the Pacific side of South America, there has been only one record of a species determined as *Az. spinosum*, from the coast of Mexico (Hernández-Becerril *et al.* 2012).

In January and February of 2014 stranding of different dead animal species, such as the small crustacean *Emerita analoga* (Stimpson, 1857), the bivalve *Semimytilus algosus* (Gould, 1859), the crab *Platyxanthus orbigny* (H. Milne Edwards & Lucas, 1843) and the anchovy *Engraulis ringens*, was observed along the central Peruvian coast line. These incidents prompted Instituto del Mar del Perú - IMARPE to implement the plankton survey 'Bio-oceanographic monitoring in the marine coastal area between Chancay and Supe' during February 2014, in order to search for the causes of these animal mortalities. During this monitoring a dense bloom of *Azadinium* in Peruvian coastal waters off Chancay was detected and sampled. This bloom was accompanied by water discoloration. As some species of *Azadinium* are known to produce azaspiracid toxins it was the aim of the present study to record the environmental settings of this bloom and to more specifically analyse the presence of AZA, as well as to identify the causative species.

## MATERIALS AND METHODS

### SAMPLING

A total of 11 stations located between 4 and 10 nautical miles off the shoreline were sampled (Fig. 1). Water transparency was estimated using a Secchi disc. At each station surface water samples (taken with a bucket) and water samples from 10 m depth (taken with a 5 L Niskin bottle sampler) were obtained. Temperature and salinity of these samples were determined with a SBE 19plus CTD (Sea-Bird Electronics). From each water sample 80 mL were fixed with buffered formalin (2% final concentration) for quantitative plankton analysis. At station 2 where suspicious plankton densities were observed, one liter

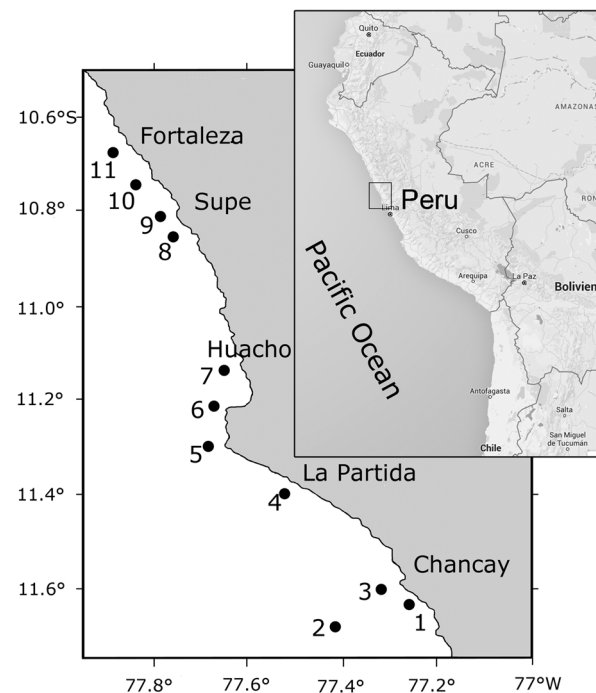
from surface and another from 20 m depth samples were collected on filters (GF/C, 25 mm diameter, Whatman). Filters were stored frozen in liquid nitrogen at -80 °C until they were shipped for azaspiracid analysis to Germany.

## ANALYSIS

### OXYGEN, NUTRIENTS, CHLOROPHYLL, AND WIND ANALYSIS

The following parameters were estimated from the water samples: Dissolved oxygen using a modified Winkler method (Carrit & Carpenter 1966); dissolved inorganic nutrients ( $\text{NO}_3$ ,  $\text{NO}_2$ ,  $\text{PO}_4$ ,  $\text{SiO}_4$ ) according to Strickland & Parsons (1972) and UNESCO (1983) by using an Perkin Elmer Lambda 40 spectrophotometer; and chlorophyll according to the fluorometric approach of Holm-Hansen *et al.* (1965) using a Turner Designs 10 AU Fluorometer.

Upwelling dynamics between 1 and 13 February 2014 were evaluated using the wind satellite information obtained by the ASCAT scatterometer and the resulting Hovmöller diagrams from wind intensity and speed anomalies. The coastal upwelling index (Bakun and Parrish 1982) along 40 km of the Peruvian coastal line (9° to 12°S) was analyzed.



**Figure 1. Study area and location of sampling sites along the Peruvian coast / Área de estudio y ubicación de estaciones de muestreo a lo largo de la costa peruana**

The spatial resolution of this information is ~25 km and the frequency is daily. The information is stored in binary files of structured type and metadata (called, NetCDF files). Wind information of ASCAT satellite is freely accessible and can be obtained from the following link <ftp://ftp.ifremer.fr/ifremer/cersat/> (Source: ASCAT, prepared by Santa Rosa Coastal Laboratory and the Marine Hydrophysics Laboratory, IMARPE).

#### PLANKTON ANALYSIS

Quantitative plankton analyses were performed using the sedimentation technique (Karlson *et al.* 2010), in 50 mL chambers, sedimented over 24 hours. The analysis was performed with an inverted microscope (NIKON ECLIPSE TE 300). Abundant species and species less than 50 µm were counted on a longitudinal transect with 500 x magnification (corresponding to a sample volume of 0.61 mL), and less abundant and larger organisms (> 50 µm) species were counted in the whole chamber with 125 x magnification. Results are expressed as cells L<sup>-1</sup>. Photographs were taken with a digital camera 5.0 MP (Novel Optics, HDCE Series) connected to a compound microscope (NIKON ECLIPSE E400) using software Scope Image 9.0.

#### ELECTRON MICROSCOPY

For station 2, a detailed scanning electron microscope (SEM) analysis was performed to determine the causative species of a dense bloom of a small dinophyte. For this purpose, 30 mL formalin-fixed bottle samples from 0 and 10 m depth were concentrated to a combined final volume of 2 mL by sedimentation. Subsamples were subsequently collected on polycarbonate filters (Millipore, 25 mm Ø, 3 µm pore-size) in a filter funnel where all subsequent washing and dehydration steps were carried out. Eight washings (2 mL MilliQ-deionized water each) were followed by a dehydration series in ethanol (30, 50, 70, 80, 95 and 100%; 15 min each). Filters were dehydrated with hexamethyldisilazane (HMDS), initially 1:1 HMDS:EtOH followed by 2 × 100% HMDS, and stored under gentle vacuum in a desiccator. Finally, filters were mounted on stubs, sputtercoated with gold-palladium (Emscope SC500, Ashford, UK) and viewed under a SEM (FEI Quanta FEG 200, Eindhoven, the Netherlands). SEM micrographs were presented on a black background using Adobe Photoshop 6.0 (Adobe Systems, San Jose, California, USA)

#### ANALYSIS OF AZASPIRACIDS

##### EXTRACTION FROM FILTERS

Glass fiber filters were transferred into cryovials containing 0.9 g lysing matrix D (Thermo Savant, Illkirch, France) and

subsequently homogenized in 500 µL methanol by two times reciprocal shaking at maximum speed (6.5 m s<sup>-1</sup>) for 45 s in a Bio101 FastPrep instrument (Thermo Savant, Illkirch, France). After homogenization, samples were centrifuged at 16,100 x g at 4 °C for 15 min. The supernatants were transferred to spin-filters (0.45 µm pore-size, Millipore Ultrafree, Eschborn, Germany) and centrifuged for 30 s at 800 x g. Filtrates were transferred to autosampler vials for analysis by liquid chromatography coupled tandem mass spectrometry (LC-MS/MS).

#### SINGLE REACTION MONITORING (SRM) MEASUREMENTS

Water was deionized and purified (Milli-Q, Millipore, Eschborn, Germany) to 18 MΩ cm<sup>-1</sup> or better quality. Formic acid (90%, p.a.), acetic acid (p.a.) and ammonium formate (p.a.) were purchased from Merck (Darmstadt, Germany). The solvents, methanol and acetonitrile, were high performance liquid chromatography (HPLC) grade (Merck, Darmstadt, Germany).

Mass spectral experiments were performed to survey for a wide array of AZAs with an analytical system consisting of an AB-SCIEX-4000 Q Trap, triple quadrupole mass spectrometer equipped with a TurboSpray interface coupled to an Agilent model 1100 LC. The LC equipment included a solvent reservoir, in-line degasser (G1379A), binary pump (G1311A), refrigerated autosampler (G1329A/G1330B), and temperature-controlled column oven (G1316A).

Separation of AZAs (5 µL sample injection volume) was performed by reverse-phase chromatography on a C8 phase. The analytical column (50 × 2 mm) was packed with 3 mm Hypersil BDS 120 Å (Phenomenex, Aschaffenburg, Germany) and maintained at 20 °C. The flow rate was 0.2 mL min<sup>-1</sup>, and gradient elution was performed with two eluents, where eluent A was water and B was acetonitrile/water (95:5 v/v), both containing 2.0 mM ammonium formate and 50 mM formic acid. Initial conditions were 8 min column equilibration with 30% B, followed by a linear gradient to 100% B in 8 min and isocratic elution until 18 min with 100% B then returning to initial conditions until 21 min (total run time: 29 min).

AZA profiles were determined in one period (0–18) min with curtain gas: 10 psi, CAD: medium, ion spray voltage: 5500 V, temperature: ambient, nebulizer gas: 10 psi, auxiliary gas: off, interface heater: on, declustering potential: 100 V, entrance potential: 10 V, exit potential: 30 V. SRM experiments were carried out in positive ion mode by selecting the transitions shown in Table 2.



### PRECURSOR ION EXPERIMENTS

Precursors of the fragments  $m/z$  348,  $m/z$  360 and  $m/z$  362 were scanned in the positive ion mode from  $m/z$  400 to 950 under the following conditions: curtain gas: 10 psi, CAD: medium, ion spray voltage: 5500 V, temperature: ambient, nebulizer gas: 10 psi, auxiliary gas: off, interface heater: on, declustering potential: 100 V, entrance potential: 10 V, collision energy: 70 V, exit potential: 12 V.

## RESULTS

### PHYSICAL AND CHEMICAL PARAMETERS

Surface temperature in the area ranged from 18–21 °C (Table 1) and revealed three different sub-areas. High surface temperature (20.5–21 °C) was observed south (Stat. 1–3), whereas temperature north of Punta Salinas (Stat. 6 and 7) was distinctly lower (18–19 °C). Surface temperature in the northern part (Stat. 8–11) and in the southern area (Stat. 4 and

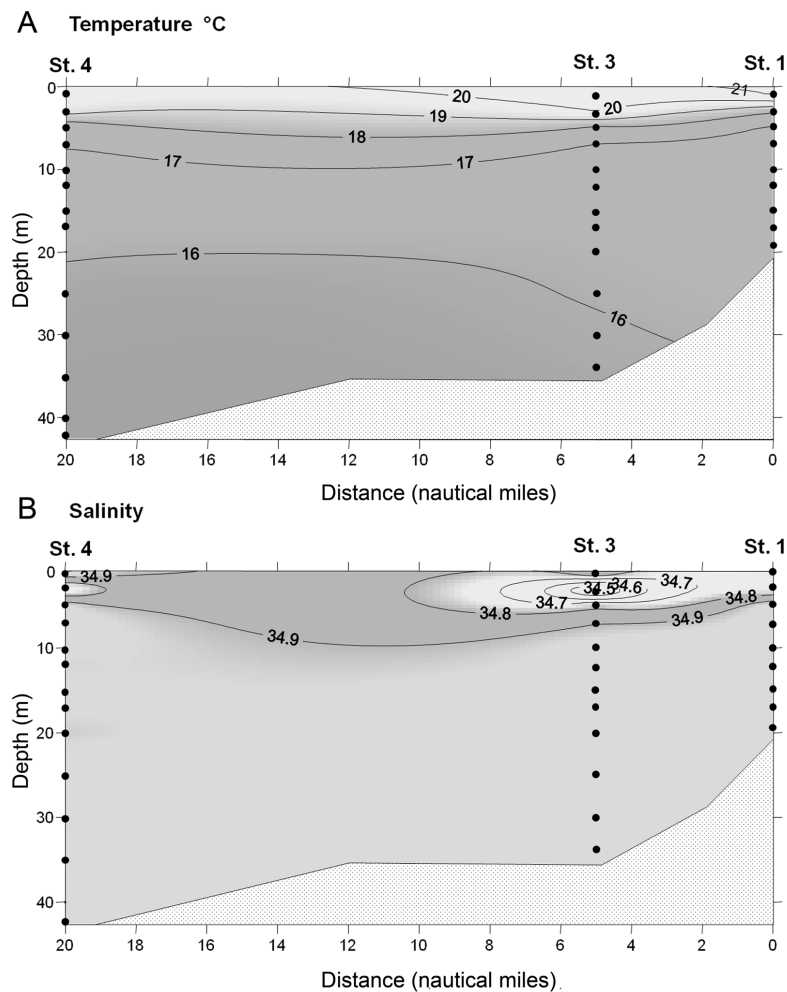
5) were between 19 °C and 20 °C. Surface salinity was higher in the southern part (34.9–35.0) and slightly lower in the northern part, reaching 35.0 (Table 1). CTD vertical profiles analyzed for a southern coastal transect from Chancay to La Partida (St. 1, 3 and 4, Fig. 2) showed a moderate thermocline formed by 5 isotherms (17–21 °C) in the layer of 0 to 10 m depth. Salinity values showed the presence of a mixing process between Cold Coastal Waters (CCW) and waters from Chancay River up to 6 m depth in station 3. Under this layer of seawater, CCW predominated with homogeneous salinity of 34.9 and temperatures of 16–17 °C.

Dissolved oxygen in surface waters in the area ranged from 1.9 to 8.8 mL L<sup>-1</sup> (Table 1). Low oxygen concentrations of 1.9 to 3.3 mL L<sup>-1</sup> were observed in the middle of the area off Huacho (Station 5–7). Low transparency was observed in the north (Stat. 9, 10 and 11) and southern part (Stat. 2 and 3) of the study area (Table 1).

**Table 1. Physical and chemical data of surface temperature, Secchi depth, salinity, oxygen, nitrate (NO<sub>3</sub>), phosphate (PO<sub>4</sub>), silicate (SiO<sub>4</sub>) and chlorophyll *a* (Chl *a*). For location of stations see Fig. 1 / Datos físicos y químicos de temperatura superficial, profundidad de disco Secchi; salinidad; datos químicos: oxígeno, nitrato (NO<sub>3</sub>), fosfato (PO<sub>4</sub>), silicato (SiO<sub>4</sub>) y clorofila *a* (Chl *a*). Para la localización de estaciones ver Fig. 1**

Stat	Latitude (S) Longitude (W)	Depth [m]	Surf. temp. [°C]	Secchi depth [m]	Sample depth [m]	Sal.	Oxygen [mL L <sup>-1</sup> ]	Chl <i>a</i> [µg L <sup>-1</sup> ]	NO <sub>3</sub> [µm]	PO <sub>4</sub> [µm]	SiO <sub>4</sub> [µm]
1	11°38.04'; 77°15.51'	20	21.0	3.0	0	34.95	8.78	0.57	35.28	2.40	4.81
					10	35.02	1.06	0.13	22.77	6.13	2.50
2	11°40.90'; 77°24.61'	81	20.8	1.5	0	35.01	7.85	2.02	5.11	4.05	2.12
					10	35.07	1.30	0.18	4.50	4.63	1.54
3	11°35.99'; 77°18.97'	41	20.5	2.0	0	35.00	5.54	2.58	3.80	3.73	1.83
					10	35.04	0.66	0.05	24.10	4.85	4.42
4	11°24.00'; 77°31.55'	44	19.8	2.5	0	35.02	6.76	1.89	23.40	2.29	1.06
					10	35.03	1.09	0.05	33.90	4.58	5.00
5	11°17.97'; 77°41.03'	60	19.5	3.5	0	35.02	3.33	nd	nd	nd	nd
6	11°12.87'; 77°41.39'	52	18.8	4.5	0	35.00	2.94	nd	nd	nd	nd
7	11°08.14'; 77°39.27'	28	18.0	6.0	0	34.01	1.89	0.23	38.30	4.79	3.37
					10	34.20	1.62	0.18	26.78	4.85	1.63
8	10°51.18'; 77°45.61'	35	19.4	2.5	0	35.01	6.53	1.37	28.81	3.41	4.23
					10	35.05	0.98	0.46	26.25	4.90	4.13
9	10°48.62'; 77°47.31'	26	19.6	2.0	0	34.97	6.64	1.32	14.98	3.25	1.73
					10	35.02	1.17	0.10	30.29	5.17	3.65
10	10°44.57'; 77°50.16'	19	19.5	2.0	0	34.11	5.81	nd	nd	nd	nd
11	10°40.55'; 77°53.20'	19	19.2	2.0	0	34.43	6.32	1.24	26.56	2.77	1.35
					10	34.90	2.03	0.70	29.44	4.37	4.04

Surf. temp.: surface temperature, Sal.; salinity, nd: no data



**Figure 2.** CTD vertical profile of temperature (A) and salinity (B) for a southern coastal transect from station 1 (Chancay) to station 4 (La Partida). See Fig. 1 for the location of sampling stations / Perfil vertical de temperatura (A) y salinidad (B) obtenido a partir de datos de CTD para el transecto costero del área sur desde estación 1 (Chancay) hasta estación 4 (La Partida). Ver Figura 1 para ubicación de estaciones de muestreo

Concentrations of nutrients are compiled in Table 1. Phosphate concentration at the surface ranged from 2.3–4.8  $\mu\text{mol L}^{-1}$  and subsurface concentration at 10 m were slightly higher (4.4–6.1  $\mu\text{mol L}^{-1}$ ). Nitrate concentration varied almost tenfold, with concentrations ranging from 3.8–38.3  $\mu\text{mol L}^{-1}$ . Lowest concentrations were observed in surface waters off Chancay (Stat. 2 and 3) whereas higher nitrate concentrations prevailed off Huacho (Stat. 7, surface), Pativilca (Stat. 11), and La Partida (Stat. 4, 10 m depth). Silicate was generally lower in concentration, ranging from 1.1–4.8  $\mu\text{mol L}^{-1}$  at the surface and 1.5–5.0  $\mu\text{mol L}^{-1}$  at 10 m depth (Table 1).

During February 01<sup>th</sup> and 08<sup>th</sup>, moderate wind speed (4.5–6.5  $\text{m s}^{-1}$ ) was registered and produced positive anomalies

(+1.5–2.0  $\text{m s}^{-1}$ ). Weak winds of 2.5–3.5  $\text{m s}^{-1}$  with neutral wind speed anomalies (-0.5–0.5  $\text{m s}^{-1}$ ) were recorded on February 9<sup>th</sup>. These conditions of moderate wind from the beginning of February caused the coastal upwelling, which was maintained active from 9°S to 12°S.

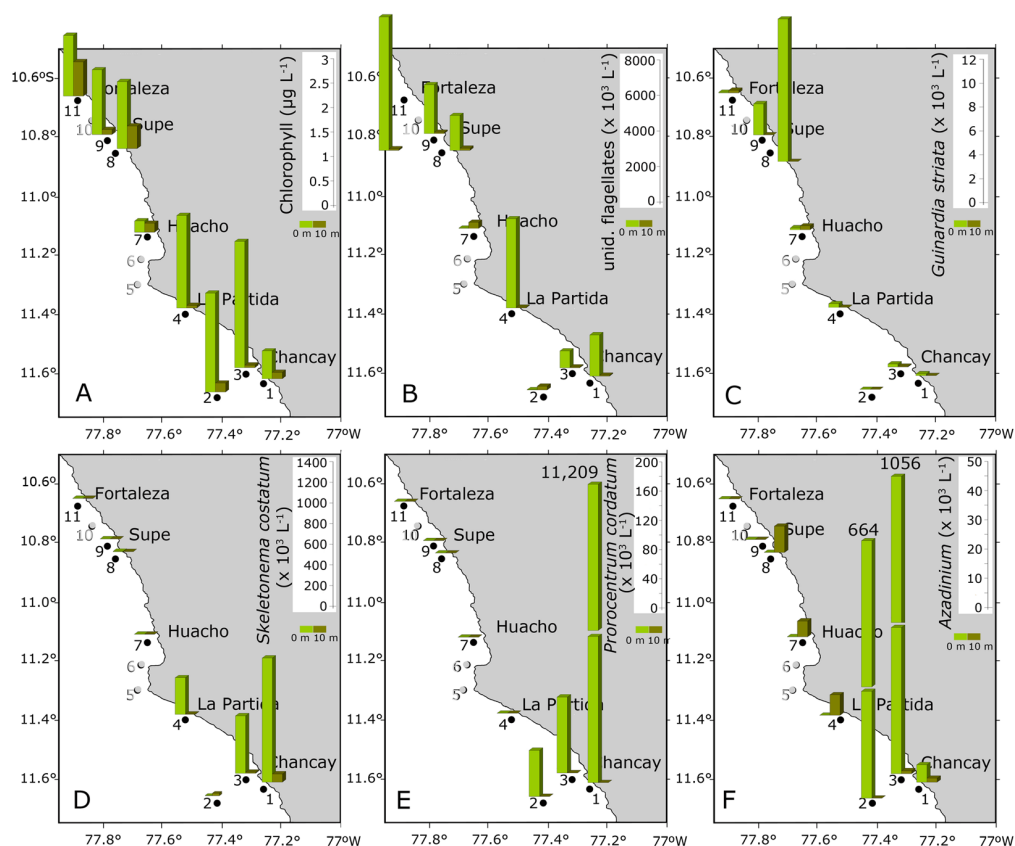
#### PLANKTON COMMUNITIES

Chlorophyll ranged from 0.05 to 2.58  $\mu\text{g Chl } a \text{ L}^{-1}$  (Table 1) with highest values found in the surface samples of southern stations 2 and 3 (Fig. 3A). The microplankton communities in the study area were mainly dominated by diatoms, with *Skeletonema costatum* (Greville) Cleve, *Leptocylindrus danicus* Cleve, *Leptocylindrus minimus* Gran, *Thalassiosira*

**Table 2. Mass transitions  $m/z$  (Q1>Q3 mass) and their respective AZAs / Espectrometría de masa  $m/z$  (Q1>Q3 masa) y AZAs correspondientes**

Mass transition	Toxin	Collision energy (CE) [V]
716>698	AZA-33	40
816>798	AZA-39	40
816>348	AZA-39	70
828>658	AZA-3	70
828>810	AZA-3	40
830>812	AZA-38	40
830>348	AZA-38	70
842>672	AZA-1	70
842>824	AZA-1, AZA-40	40
842>348	AZA-40	70
844>826	AZA-4, AZA-5	40
846>828	AZA-37	40
846>348	AZA-37	70
854>670	AZA-41	70
856>672	AZA-2	70
856>838	AZA-2	40
858>840	AZA-7, AZA-8,	40
858>348	AZA-9, AZA-10, AZA-36, AZA-36	70
868>362	Undescribed	70
870>852	Me-AZA-2, AZA-42	40
872>854	AZA-11, AZA-12	40

*subtilis* (Ostenfeld) Gran, and *Thalassionema nitzschioides* (Grunow) Mereschkowsky, as the most abundant species. Among Dinophyceae, large thecate species like *Protoperidinium depressum* (Baily) Balech and *Tripos furca* were present, as well as a number of species of the genus *Prorocentrum*, i.e., *Prorocentrum cordatum* (Ostenfeld) J.D.Dodge, *Prorocentrum gracile* and *Prorocentrum micans* [for a full table of phytoplankton species and abundances see Suppl. 1]. Phytoplankton species were differently distributed in the area. Small (< 10  $\mu\text{m}$ ) unidentified flagellates had highest abundances of up to  $2 \times 10^6$  cells  $\text{L}^{-1}$  in the north and off La Partida (Fig. 3B). Some diatom species, as exemplarily shown for *Guinardia striata* (Stolterfoth) Hasle, were highly abundant in the northern part only (Fig. 3C), whereas others (e.g., *Skeletonema costatum*; Fig. 3D) were almost completely restricted to the southern area. Among Dinophyceae, a notably dense bloom of *P. cordatum* (Fig. 3E) was recorded. It had a peak density of  $>11 \times 10^6$  cells  $\text{L}^{-1}$  that occurred at station 1, with cells densities at the neighbouring stations 2 and 3 being more than one order of magnitude lower.



**Figure 3. Distribution and abundance of (A) chlorophyll  $a$ , (B) unidentified flagellates, (C) *Guinardia striata*, (D) *Skeletonema costatum*, (E) *Prorocentrum cordatum*, and (F) *Azadinium* spp. / Distribución y abundancia de (A) clorofila  $a$ , (B) flagelados no-identificados, (C) *Guinardia striata*, (D) *Skeletonema costatum*, (E) *Prorocentrum cordatum*, y (F) *Azadinium* spp.**

## THE AZADINIUM BLOOM

At two stations off Chancay (stations 2 and 3), a dense bloom of a small thecate dinoflycean species identified as *Azadinium* was observed (Fig. 3F). This bloom was accompanied by a reddish-brown discoloration of the water. Using light microscopy the causative species (Fig. 4A, B) was provisionally identified and reported as '*Azadinium* cf. *spinosum*' based on general size and shape and on the presence of a short antapical spine. Cell size of formalin fixes cells in light microscopy (LM) was estimated to range from 12.0 to 16.2  $\mu\text{m}$  in length (mean 14.6  $\pm$  1.5 SD; n = 15) and from 7.2 to 10.2  $\mu\text{m}$  in width (mean 8.7  $\pm$  1.4 SD; n = 15).

Because species of the genus *Azadinium* are known as producers of azaspiracids, samples taken at station 2 (0 and 10 m depth) were analysed for the presence of these toxins by LC-MS/MS. However, no known AZAs (Table 2) were detected in the samples. Considering the density of *Azadinium* at station 2 ( $6.64 \times 10^5$  cells  $\text{L}^{-1}$ ), the limit of detection (LOD) for these measurements was determined as 0.02 fg cell $^{-1}$ . In order to test for yet unknown AZA variants, precursor ion scans of the characteristic AZA fragments  $m/z$  348, 360 and 362 were performed, but resulted negative. The LOD of precursor ion fragments is significantly higher as of the more sensitive SRM experiments and was determined as 1 fg cell $^{-1}$ . In summary, the *Azadinium* bloom species reported here can be regarded as a non AZA-producer.

Species of *Azadinium* are small and rather difficult to be identified at species level by LM, so a detailed study using electron microscopy was performed.

## ELECTRON MICROSCOPY

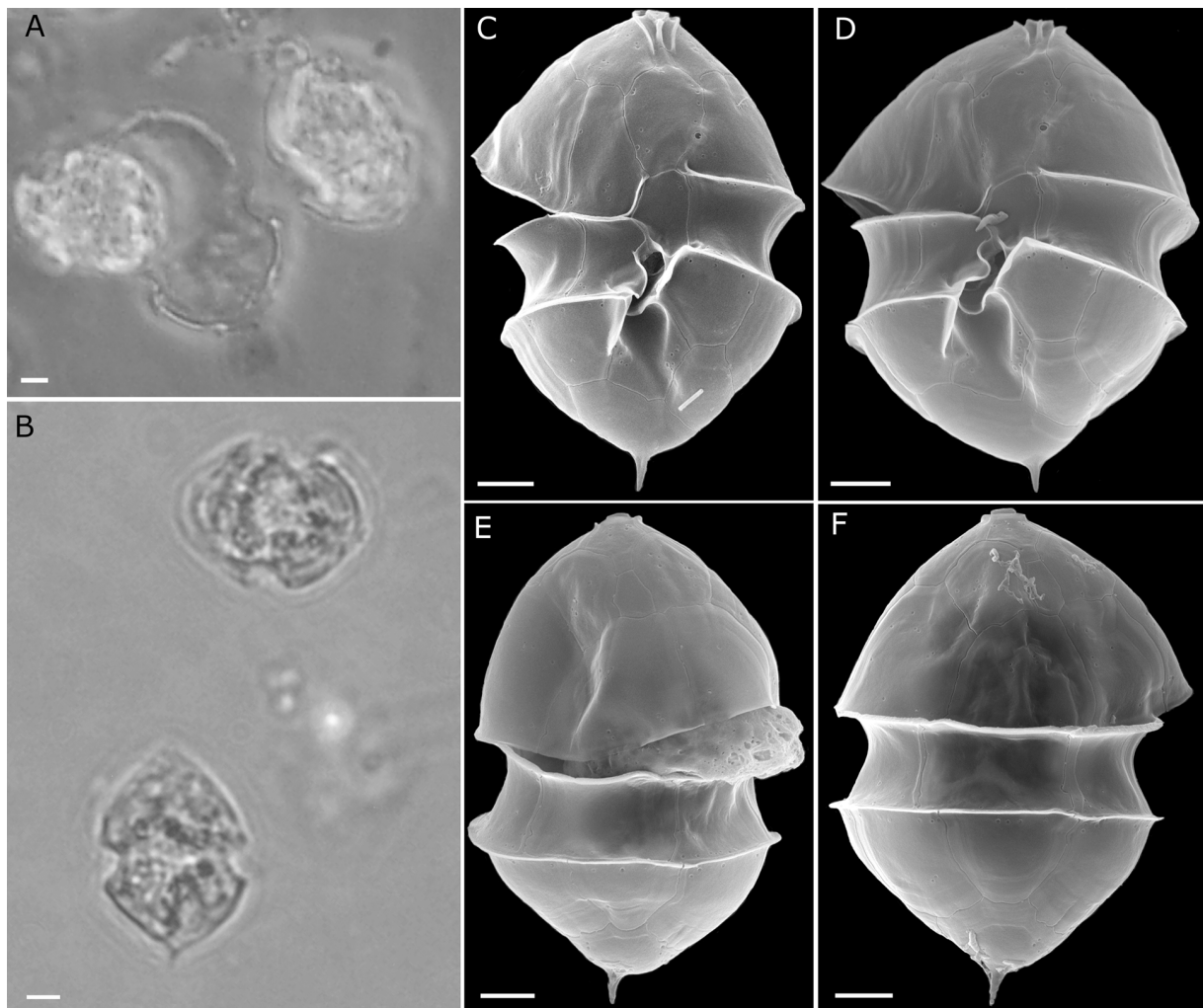
In the subsample of station 2 analysed with SEM, a large number of cells (> 100) of *Azadinium* were inspected. All specimens that had distinctive features in view presented the same morphotype, which we determined here as *Azadinium polongum* Tillmann. The cells were ovoid and slightly dorsoventrally compressed (Fig. 4C–F). Cells varied in size, ranging from 13.5 to 20.7  $\mu\text{m}$  in length (mean: 16.9  $\pm$  1.6  $\mu\text{m}$ , n = 69) and 10.0 to 15.3  $\mu\text{m}$  in epithelial width (mean: 12.8  $\pm$  1.3  $\mu\text{m}$ ; n = 49), with a length/width ratio of 1.3  $\pm$  0.1  $\mu\text{m}$  (1.1–1.5, n = 48). A single antapical spine almost symmetrically formed the termination of a hemispherical to conical shaped hypotheca (Figs. 4C–F; 6E–G). Occasionally, the spine arose from a small bump (Fig. 6G). The length of the spine was 1.2  $\pm$  0.2  $\mu\text{m}$  (0.7–1.6, n = 63). A ventral pore was located at the border of Plate 1' and 1'', at the lower third level of the epitheca, embedded in a cavity of Plate 1'' (Figs. 4C, D; 5A). This pore has a distinct outer rim measuring 0.34  $\pm$  0.01  $\mu\text{m}$  (n = 8) in diameter.

The first apical plate 1' had an ortho pattern and was progressively narrowed in its anterior part and ended in a slender tip abutting the pore plate (Fig. 5A, G). Both lateral apical plates 2' and 4' clearly invaded the ventral area, with their tapering posterior ends pointing toward the sulcus (Figs. 4C, D; 5A). The dorsal apical plate 3' was elongated in its posterior part where it abutted the small intercalary plate 2a (Figs. 4E, F; 5E, F). Three anterior intercalary plates were arranged more or less symmetrically on the dorsal side of the epitheca. The small second intercalary plate (2a) occurred in two different arrangements, either tetragonal almost symmetrically located above plate 3'' (Figs. 4E, 5E), or in a penta-configuration (*i.e.*, plate 2a was pentagonal) with plate 2a in contact to 3'' and 4'' (Figs. 4F, 5F). For a total number of 59 cells where plate 2a was visible, 31 cells (51%) had a tetragonal, and 28 cells (47%) had a pentagonal configuration, respectively. The first (1') and last (6'') precingular plates both contacted only four epithelial plates (*i.e.*, plate 1' was not in contact to plate 1a) (Fig. 5B–E). This was the case for all 63 cells where this epithelial area was visible.

The episome ended with a conspicuous apical pore complex (APC) (Fig. 5G–J). The apical pore was covered by a cover plate and was located in the dorsal part of an elongated pore plate, the latter having a roundish dorsal part that was considerable prolonged ventrally. A conspicuous rim bordered the dorsal and lateral margins of the pore plate with the lateral rim running almost parallel in its distal end. Ventrally the pore plate abutted the first apical plate and the X-plate, which was slender and elongated (Fig. 5H, J). The X-plate had a very characteristic three-dimensional structure, with finger-like protrusions contacting the cover plate (Fig. 5H, I). The elongated pore plate was 2.34  $\pm$  0.11  $\mu\text{m}$  in length (n = 5) and 1.68  $\pm$  0.13  $\mu\text{m}$  in width (n = 14).

The cingulum was wide [3.4  $\pm$  0.3  $\mu\text{m}$  (2.7–4.4, n = 65)], descending, displaced by about half of its width, and was composed of six comparably sized plates (Fig. 6A, C). The deeply concave sulcus (Figs. 4C, D; 6B–D) was composed of 5 sulcal plates with two smaller and centrally located sulcal plates forming a concave central pocket (Fig. 6B–D). The hypotheca consisted of 6 postcingular plates and 2 antapical plates (Fig. 6A).

For most of the plates, the pattern and arrangement of *Az. polongum* in the bloom field sample was rather stable. Nevertheless, the shape of single plates was somewhat variable as exemplarily compiled in Figure 7 for the central intercalary plate 2a. This plate was rectangular in quadra arrangement or mainly triangular in its posterior part when in pentagonal arrangement. However, rarely the posterior part of a pentagonal 2a plate was rounded (Fig. 7J), or the anterior part of a



**Figure 4.** *Azadinium polongum* from Station 2. LM (A, B), and SEM (D–F) micrographs, in ventral (C, D) or dorsal (E, F) view. Scale bars = 2  $\mu\text{m}$  / *Azadinium polongum* de la estación 2. Microfotografías de microscopio de luz (A, B), y microscopio electrónico de barrido (D–F), en vista ventral (C, D) o vista dorsal (E, F). Barras de escala = 2  $\mu\text{m}$

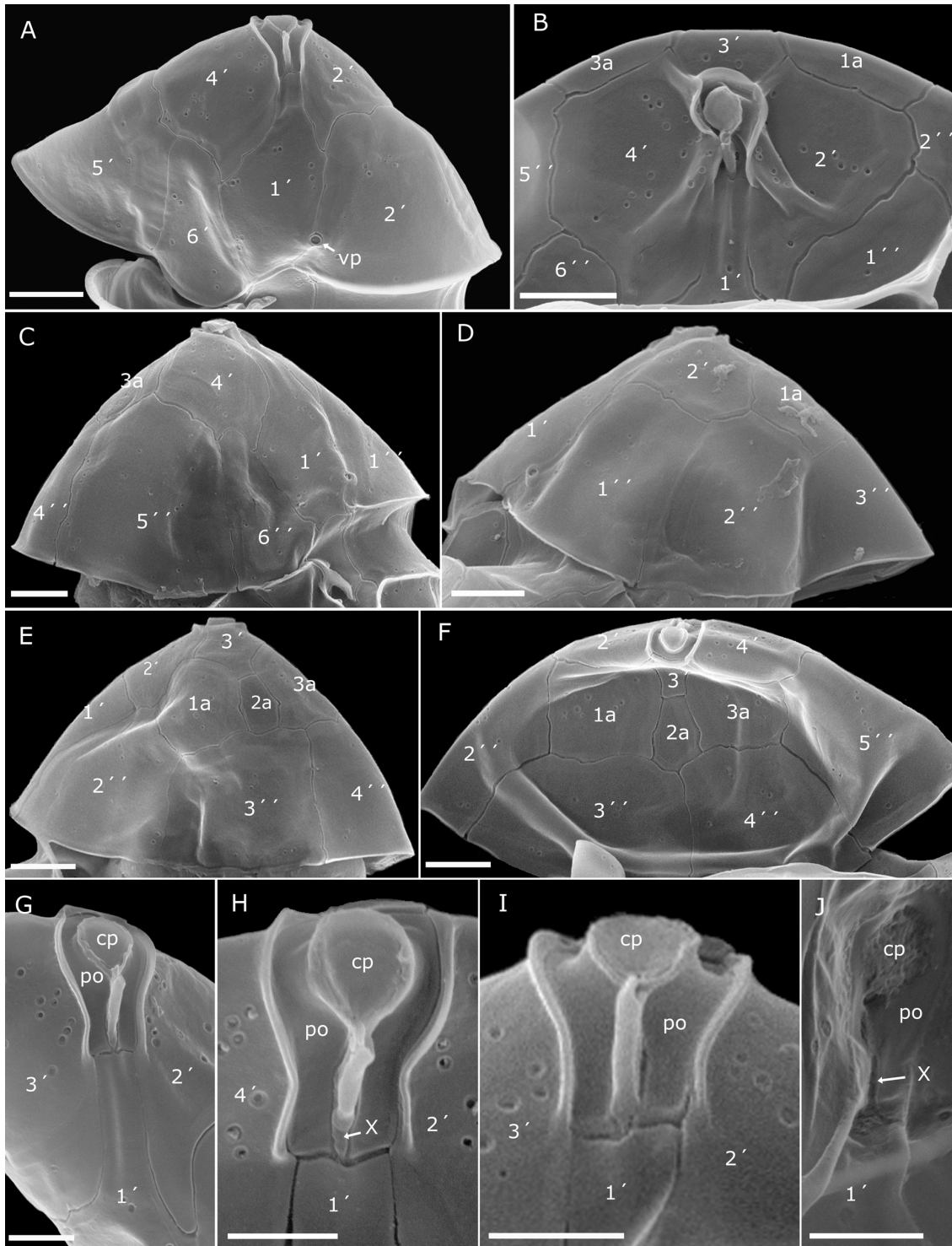
tetragonal plate was triangularly pointed (Fig. 7E). Exceptionally plate 2a was displaced and not in touch to plate 3' anymore (Fig. 7F). Rounded convexities in the sutures of plate 2a were mostly present but quite differently expressed on both or just one of the lateral sides (Fig. 7).

## DISCUSSION

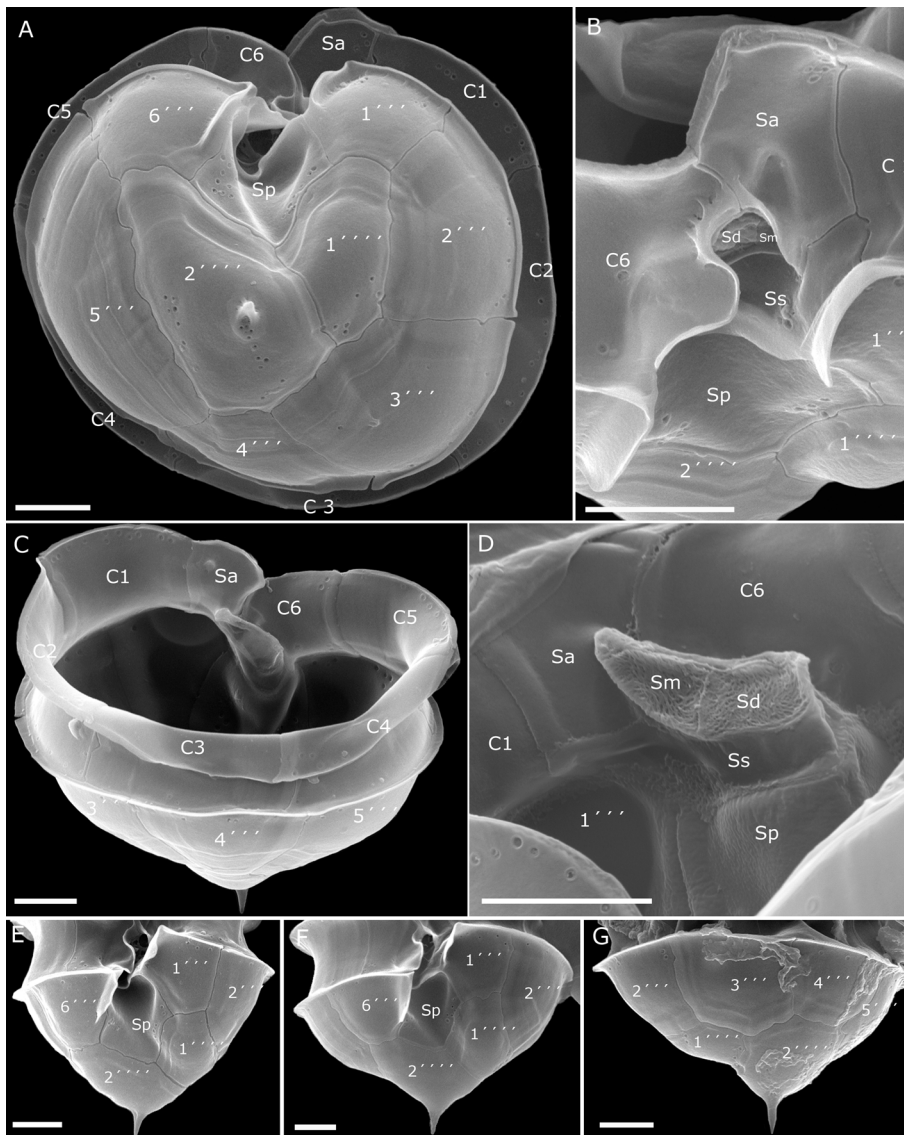
The oceanographic conditions off the Peruvian coast during 2014 were heavily influenced by atmospheric fluctuations and the arrival of different Kelvin waves, impacting in the coastal upwelling system. These conditions started during austral spring of 2013, with Kelvin waves recorded in January, March, April

and May/June in 2014. The coastal area was affected by a reduction in the nutrients availability in the surface layer, and death and migrations of a number of different marine organisms mainly in the northern and central zones of the Peruvian coast was observed (IMARPE 2014, Graco *et al.* 2016).

During February 2014, when the bloom of *Azadinium* off Chancay occurred, upwelled waters between 10.6°S and 11.4°S were identified. These waters were distributed from Fortaleza to La Partida, while high surface temperatures (20.5–21 °C) were registered to the south of Charimar and Chancay, as a result of warming that was observed in the Peruvian coast (IMARPE 2014). Nitrate and phosphate



**Figure 5.** *Azadinium polongum*. SEM micrographs of different cells. (A–F) Epithea in ventral (A), apical (B), right lateral (C), left lateral (D), and dorsal (E, F) view. Note that plate 2a is four-sided (quadra configuration) in (E) and five-sided (penta configuration) in (F). (G–J) Detailed view of the apical pore complex in external (G–I) and internal (J) view. Po = apical pore plate; X = X-plate; cp = cover plate. Scale bars = 2 μm / *Azadinium polongum*, microfotografías de microscopio electrónico de barrido de distintas células. (A–F) Epiteca en vista ventral (A), apical (B), lateral derecho (C), lateral izquierdo (D), y vista dorsal (E, F). Nótese que la placa 2a es de configuración cuadra en (E) y penta en (F). (G–J) Vista detallada del complejo del poro apical en vista externa (G–I) e interna (J). Po = placa del poro apical; X = placa X; cp = placa de cubierta. Barras de escala = 2 μm

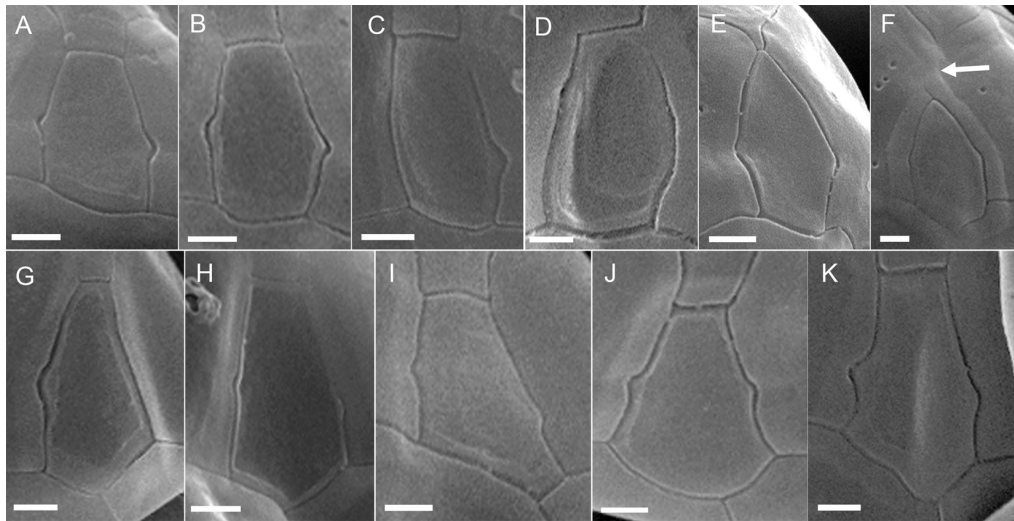


**Figure 6. *Azadinium polongum*. SEM micrographs of different cells. (A) Antapical view of hypothecal plates. (B–C) Details of the sulcal plate arrangement in ventral (B) and internal (C) view. (D) Dorsal view of the hypotheca showing the series of cingular plates. C = Series of cingular plates; Sa = anterior sulcal plate; Sp = posterior sulcal plate; Ss = left sulcal plate; Sm = median sulcal plate; Sd = right sulcal plate). (E–G) Variability in shape of the antapex of the cell. Scale bars = 2  $\mu\text{m}$  / *Azadinium polongum*. Microfotografías de células distintas en microscopio electrónico de barrido. (A) Vista antapical de placas hipotecales. (B–C) Detalles de la disposición de las placas sulcales en vista ventral (B) e interna (C). (D) Vista dorsal de la hipoteca mostrando la serie de placas cingulares. C = Serie de placas cingulares; Sa = placa sulcal anterior; Sp = placa sulcal posterior; Ss = placa sulcal izquierda; Sm = placa sulcal media; Sd = placa sulcal derecha). (E–G) Variabilidad de forma del antápex de la célula. Barras de escala = 2  $\mu\text{m}$**

concentration at that time were in normal high ranges for the season (austral summer). Low silicate concentration in the upper layer agreed with low values usually registered in austral summer (1.0  $\mu\text{m}$ ), which were caused by diatom blooms that deplete this nutrient (Zuta & Guillén 1970, Graco *et al.* 2007). In the southern area off Chancay, nitrate concentrations were significantly lower compared to other stations and correspond

with the location of the *Azadinium* bloom. This bloom attracted attention because of the suspicious reddish-brown water discoloration and high abundances and dominance of a small thecate dinoflagellate. Based on the general cell size, shape, and the identification of a single antapical spine, the first LM observations led to the provisional designation of the bloom species as *Az. cf. spinosum*. Since *Az. spinosum*





**Figure 7. *Azadinium polongum*.** SEM micrographs of different cells. (A–K) Variability in shape of the dorsal apical plate 2a. (A–F) Plate 2a four-sided in quadra configuration. (G–K) Plate 2a five-sided in penta configuration. Note that in (F) plate 2a is displaced and without contact to plate 3' (white arrow). Scale bars = 0.5  $\mu\text{m}$  / *Azadinium polongum*. Microfotografías de células distintas en microscopio electrónico de barrido. (A–K) Variabilidad de la placa apical dorsal 2a. (A–F) Placa 2a en configuración cuadra. (G–K) Placa 2a en configuración penta. Nótese que en (F) la placa 2a está desplazada y carece de contacto con la placa 3' (flecha blanca). Barras de escala = 0,5  $\mu\text{m}$

is a source species of AZAs (Tillmann *et al.* 2009) and thus is on the IOC-UNESCO taxonomic reference list of harmful micro alga (<<http://www.marinespecies.org/hab/aphia.php?p=taxdetails&id=391509>>), it encouraged us to more specifically look for the presence of AZAs and to more precisely identify the causative species.

Species of Amphidomataceae are very similar in general size and shape and are furthermore rather similar to a number of small species of *Heterocapsa*, so reliable identification of fixed cells of *Azadinium* from field samples is problematic. However, there is a need to unambiguously identify and quantify the species to distinguish toxigenic species from their non-toxic relatives. This task is challenging because AZA-producing and non-toxic species are known to co-exist in the same water mass (Tillmann *et al.* 2010, 2012a). The determination of diagnostic morphological characteristics in *Azadinium*, such as details of the plate number and arrangement, or the location of a ventral pore, ultimately requires electron microscopy.

Our SEM investigation revealed that the Peruvian bloom corresponded to *Azadinium polongum*, a non-toxic species. This is the first record of the genus *Azadinium* in Peru, and the first record of *Az. polongum* in the Pacific Ocean. Up to now the species had been only documented when described in 2012 from its type locality, the Shetland Islands, in the North Atlantic (Tillmann *et al.* 2012a).

Moreover, our study is the first record of a high abundance bloom of *Azadinium* in the Pacific Ocean.

But first it is important to discuss why we classified the bloom species as *Az. polongum*. Morphological features important for *Azadinium* species designation include the number of apical and intercalary plates, the presence of an antapical spine, and most importantly, the position of the ventral pore (Tillmann & Akselman 2016). This pore found in *Azadinium* is a hole distinctly larger than regular thecal pores and is surrounded by a platelet-like structure. This pore has a species specific position on the ventral part of the epitheca and is thus reported as the ventral pore (vp) (for a compilation of morphological details of all species of *Azadinium* see Tillmann & Akselman 2016). Whereas many *Azadinium* species have the vp located close or inside of the apical pore plate, there are three species where the vp is located much more posteriorly at the suture of plate 1' with 1'', as it is found in the Peruvian bloom specimens. These are *Azadinium obesum* Tillmann & Elbrächter, *Az. spinosum*, and *Az. polongum*. *Az. obesum* is clearly different as it lacks an antapical spine, which is found for both *Az. spinosum* and *Az. polongum*. For the type of *Az. polongum* the position of the vp was described as more posteriorly positioned compared to *Az. spinosum*, being located in the lower third epitheca between plate 1' and 1'' (Tillmann *et al.* 2012a). Moreover, in *Az. polongum* the ventral pore is clearly located on the suture and is embedded in a cavity of plate 1'', whereas in



*Az. spinosum* it is located within the 1' plate and is connected to the suture of 1' and 1'' by a narrow slit (Tillmann *et al.* 2009). It has been emphasized that the most distinctive feature of *Az. polongum* is the shape of the pore plate, which allows a separation of *Az. polongum* (elongated pore plate) from other *Azadinium* species (round to ellipsoid pore plate). Related to this, the shape of the X-plate is elongated in *Az. polongum*, but round to ellipsoidal in other *Azadinium* species. All specimens observed in the field sample thus conformed to the description and diagnosis of *Az. polongum* with respect to the presence of an antapical spine, the position of the ventral pore, and the elongated shape of both the pore plate and the X-plate, which justify our designation of the Peru blooms species as *Az. polongum*.

It should be noted that a number of morphological details deviate from the type material and thus will be discussed in more detail. In terms of cell shape and size the Pacific population of *Az. polongum* was very similar to the type culture ShetB2. Size estimates of the Peruvian bloom species using LM (12.0–16.2 µm cell length, and 7.2–10.2 cell width) were slightly smaller than size measurements using SEM (13.5–20.7 µm cell length; 10.0–15.3 µm in epithelial width). Increased width of cells in SEM might occur when thecae partly collapse leading to more flat cells compared to undeformed cells which are only little if at all dorsoventrally compressed. A slightly different range of cell length probably is due to the higher number of cells measured under SEM. In any case, median cell length of *Az. polongum* estimated here with SEM (16.9 µm) was slightly larger than median cell length of the type culture ShetB2 (13.0 µm), indicating small morphometric differences between both populations.

There was a main difference between the *Az. polongum* type culture ShetB2 and the Pacific population concerning the plate arrangement. The first intercalary plate (1a) of the Pacific specimens was without exception not in contact with the first precingular plate (1''). Arrangement of these two plates has been discussed as a species-specific feature, and plates 1a and 1'' being separated by the second apical plate has been observed for *Azadinium cuneatum* Tillmann & Nézan, *Az. obesum*, and *Az. concinnum* Tillmann & Nézan only. Our result now indicate that this feature can be variable within a species, but molecular data on the Pacific population are needed to generally evaluate the level of evolutionary identity or divergence of such geographically separated populations.

For the type culture ShetB2 of *Az. polongum* the second intercalary plate (2a) was always tetragonal and in contact with four plates (quadra configuration), including only one precingular plate (the dorsal plate 3'). For the field population of Peru,

however, we found the arrangement of plate 2a to be variable; in about half of the specimens it was pentagonal and contacting plates 3'' and 4''. An intraspecific variability of plate 2a arrangement is known for other *Azadinium* species. For the type culture 3D6 of *Az. cuneatum*, a quadra-configuration of the intercalary plate 2a was most abundant, but a penta-configuration was present in a significant percentage of cells (up to 40%) as well (Tillmann *et al.* 2014b). Within a field population of *Azadinium luciferelloides* Tillmann & Akselman, also both arrangements of plate 2a were observed, but here a pentagonal plate 2a was a very rare exception (Tillmann & Akselman 2016). Variability and deviation in plate patterns and arrangements are often discussed as culture artifacts. Our data provide evidence that intraspecific variability in plate arrangements can be common and abundant in a field population. The presence of both quadra- and penta-configuration of plate 2a within a single species has also been described for field populations of *Peridiniella danica* (Paulsen) Y.B. Okolodkov & J.D. Dodge (Okolodkov & Dodge 1995), although here, conspecificity of the different types is not confirmed.

Variability within the *Az. polongum* field population pertained not only to plate arrangement but also to the shape of plate 2a (Fig. 7), which has also been previously reported for the bloom population of *Az. luciferelloides* (Tillmann & Akselman 2016). The second intercalary plate of the type culture of *Az. polongum* has been described as being particularly small and located at the posterior tip of a small and elongated plate 3'. However, with the high variability of plate 2a shape, this feature was not obvious within the Pacific field population.

In addition to some morphological differences, the Pacific population of *Az. polongum* is likely to have quite different ecological requirements. The type culture of *Az. polongum* was isolated from the Shetland Islands (North Atlantic) at a water temperature of 10 °C, and in culture grows well at 10 °C but rapidly declined at 20 °C (Tillmann *et al.* 2012a). As the Pacific bloom of *Az. polongum* occurred in summer at sea surface temperatures of ca. 20 °C, this is an indication that the Atlantic and Pacific populations may have different temperature requirements.

Our report of high densities of up to one million cells of *Az. polongum* per liter is a first bloom record for a species of *Azadinium* in the Pacific Ocean. Generally, quantitative abundance data of Amphidomataceae species are hardly available. Even for Ireland, the country most seriously hit by elevated AZA concentrations in shellfish with concomitant losses for the shellfish industry (Salas *et al.* 2011), very little quantitative data are available almost ten years after the identification of the

toxin source organism. The only quantitative data published so far regarding Ireland are from a time series from Killary Harbour (Tillmann *et al.* 2014a). They indicate that even during high AZA toxin concentrations (*i.e.*, above the regulatory limit of 1.6 µg per g of shellfish meat), abundance of 'Azadinium-like' cells in the water reached values lower than 25,000 cells L<sup>-1</sup>. Conspicuous blooms of *Az. spinosum* in Ireland are unlikely to go unnoticed considering the intense Irish phytoplankton monitoring program. It seems obvious that relatively low cell densities of toxigenic *Azadinium* are sufficient to cause high AZA accumulations in shellfish. Reports of *Azadinium* from other areas generally indicate rather low cell abundances (Tillmann *et al.* 2014b). At three stations off Chile (South Pacific Ocean), the presence of the toxigenic *Az. poporum* was detected with densities below 7,000 cells L<sup>-1</sup> (Tillmann *et al.* 2017). A 3-year time series based on qPCR of *Az. poporum* from Shiwa Bay (South Korea), showed the regular presence of the species, always with low densities and peak concentrations of about 5,000 cells L<sup>-1</sup> (Potvin *et al.* 2013).

The only other available records of dense *Azadinium* blooms come from the 1990s from the South Atlantic Ocean, where densities up to 9 x 10<sup>6</sup> cells L<sup>-1</sup> were reported (Akselman & Negri 2012, Akselman *et al.* 2014). These blooms from 1990, 1991 and 1998, however, were different from the Peruvian bloom in several aspects. First, the Argentinean blooms were observed quite offshore at the shelf margin (*ca.*, 100–250 m water depth), whereas the Peruvian bloom occurred in more shallow waters close to the coast. Second, few available data on vertical distribution of *Azadinium* during the South Atlantic blooms indicate highest abundance of *Azadinium* in deeper waters (25 m depth), whereas cells of the Peruvian blooms were concentrated at the surface, with very low concentrations found at 10 m depth. Third, all three blooms in Argentina occurred in spring at water temperatures of about 6–10 °C (Akselman *et al.* 2014), that is quite different to the summer bloom off Chancay occurring at a water temperature slightly above 20 °C. Finally, the species causing the blooms are different. At least one of the blooms in Argentina was dominated by a new species, *Az. luciferelloides*, which was accompanied by lower densities of many other Amphidomatacean species, but not *Az. polongum* (Tillmann & Akselman 2016). In contrast, the bloom of Peru was only composed of *Az. polongum*.

No AZAs were detected in the Peruvian bloom sample. Thus, given the high cell density and the sensitivity of the LC-MS/MS method, the Peruvian *Az. polongum* can be regarded as a non-AZA producer. This is in line with the negative AZA result for the type culture of *Az. polongum* (Tillmann *et al.* 2012a) and confirms the notion that only 4 species of Amphidomataceae produce these toxins (*Az. spinosum*, *Az.*

*poporum*, *Az. dexteropoum*, *Amphidoma languida*). Nevertheless, cultures of South Pacific *Azadinium* are needed in order to clarify the AZA production potential of local species and finally evaluate the risk potential of AZA shellfish contamination.

Although chemical analysis indicate that azaspiracids were not present in the bloom and thus the local *Az. polongum* must be considered as non-toxigenic, the present *Azadinium* bloom is an alert for coastal monitoring. There is a potential risk that other AZA producing species might be present along the Peruvian coast, as a high diversity of the genus, including AZA-producing and non-producing species, has been reported for other areas before (Tillmann *et al.* 2010, Tillmann & Akselman 2016, Kim *et al.* 2017). Regular monitoring programs performed along the Peruvian coast since the bloom event in 2014 have not revealed the presence of *Azadinium* again, but occurrence, development, and bloom formation of plankton, and especially of particular plankton species, can be sporadic, intermittent and generally difficult to predict, especially in light of the continuously ongoing environmental and climate change.

#### ACKNOWLEDGEMENT

Thanks to the personnel of the IMARPE Phytoplankton laboratory for the support in the analysis of the samples, to Eng. Francisco Ganoza, Coordinator of the Laboratory of Huacho / IMARPE for the logistical facilities, and to IMARPE Physical Oceanography Area for giving CTD data, surface physical parameters and satellite wind data. Thanks to Wolfgang Drebing for technical support in AZA analysis. Financial support was provided by the PACES research program of the Alfred Wegener Institute as part of the Helmholtz Foundation initiative in Earth and Environment.

#### LITERATURE CITED

- Akselman R & RM Negri. 2012. Blooms of *Azadinium* cf. *spinosum* Elbrächter et Tillmann (Dinophyceae) in northern shelf waters of Argentina, Southwestern Atlantic. *Harmful Algae* 19: 30-38.
- Akselman R, RM Negri & E Cozzolino. 2014. *Azadinium* (Amphidomataceae, Dinophyceae) in the Southwest Atlantic: *In situ* and satellite observations. *Revista de Biología Marina y Oceanografía* 49: 511-526.
- Álvarez G, E Uribe, P Ávalos, C Mariño & J Blanco. 2010. First identification of azaspiracid and spirolides in *Mesodesma donacium* and *Mulinia edulis* from Northern Chile. *Toxicon* 55: 638-641.
- Anderson DM, TJ Alpermann, AD Cembella, Y Collos, E Masseret & M Montresor. 2012. The globally distributed genus *Alexandrium*: Multifaceted roles in marine ecosystems and impacts on human health. *Harmful Algae* 14: 10-35.

- Antinori JA, LM Sánchez-Ycochea, JA Mendoza, O Flores & D Ascón. 2003.** Monitoring of harmful microalgae and phycotoxins in Peru: first report of PSP toxins in shellfish. In: Villalba A, B Reguera, JL Romalde & R Beiras (eds). Proceedings of the 4th International Conference on Molluscan Shellfish Safety, pp. 203-210. Consellería de Pesca e Asuntos Marítimos da Xunta da Galicia and IOC-UNESCO, Santiago de Compostela.
- Bárcena-Martínez V, J López-Hidalgo, J Rojas-Fox, M Baylón-Coritoma, LM Sánchez-Ycochea & O Flores-Salmón. 2013.** *Alexandrium tamiyavanichi* on the north coast of Perú. *Harmful Algae News* 47: 24-25.
- Bakun A & RH Parrish. 1982.** Turbulence, transport, and pelagic fish in the California and Peru currents systems. *CALCOFI Report* 23: 99-112.
- Baylón M, S Sánchez, V Bárcena, J López & E Mamani. 2015.** First record of potentially toxic dinoflagellate, *Alexandrium minutum* Halim 1960, from Peruvian coast. *Revista Peruana de Biología* 22: 113-118.
- Carrit DE & JH Carpenter. 1966.** Comparison and evaluation of currently employed modifications of the Winkler method for determining dissolved oxygen in seawater; a NASCO report. *Journal of Marine Research* 24: 286-318.
- Cushing DH. 1989.** A difference in structure between ecosystems in strongly stratified waters and in those that are only weakly stratified. *Journal of Plankton Research* 11: 1-13.
- Graco M, J Ledesma, G Flores & M Girón. 2007.** Nutrients, oxygen and biogeochemical processes in the Humboldt upwelling current system off Peru. *Revista Peruana de Biología* 14: 117-128.
- Graco M, D Correa, W García & M Sarmiento. 2016.** Impactos del ENSO en la biogeoquímica del sistema de afloramiento frente a Perú central, febrero 2013-diciembre 2015. *Boletín Trimestral Oceanográfico* 2: 2-6.
- Gu H, Z Luo, B Krock, M Witt & U Tillmann. 2013.** Morphology, phylogeny and azaspiracid profile of *Azadinium poporum* (Dinophyceae) from the China Sea. *Harmful Algae* 21/22: 64-75.
- Hallegraeff GM. 2003.** Harmful algal blooms: A global overview. In: Hallegraeff GM, D Anderson & AD Cembella (eds). *Manual on harmful marine microalgae*, pp. 25-49. UNESCO, Paris.
- Hallegraeff GM. 2014.** Harmful algae and their toxins: Progress, paradoxes and paradigm shifts. In: Rossini GP (ed). *Toxins and biologically active compounds from microalgae*, pp. 3-20. CRC Press, Boca Raton.
- Hernández-Becerril DU, SA Barón-Campis & S Escobar-Morales. 2012.** A new record of *Azadinium spinosum* (Dinoflagellata) from the tropical Mexican Pacific. *Revista de Biología Marina y Oceanografía* 47: 553-557.
- Holm-Hansen O, CJ Lorenzen, RW Holmes & JDH Strickland. 1965.** Fluorometric determination of chlorophyll. *Journal du Conseil International pour l'Exploration de la Mer* 30: 3-15.
- IMARPE. 2014.** Informe sobre la situación actual del stock norte-centro de la anchoveta peruana a octubre del 2014. Of. N° PCD-100-522. 2014 PRODUCE /IMP, 44 pp. IMARPE, Callao.
- Karlson B, C Cusack & E Bresnan. 2010.** Microscopic and molecular methods for quantitative phytoplankton analysis. *IOC Manuals and Guides* 55: 1-110. UNESCO, Paris.
- Kim JW, U Tillmann, NG Adams, B Krock, WL Stutts, JR Deeds, MS Han & VL Trainer. 2017.** Identification of *Azadinium* species and a new azaspiracid from *Azadinium poporum* in Puget Sound, Washington State, USA. *Harmful Algae* 68: 152-167.
- Kremp A, P Tahvanainen, W Litaker, B Krock, S Suikkanen, CP Leaw & C Tomas. 2014.** Phylogenetic relationships, morphological variation, and toxin pattern in the *Alexandrium ostenfeldii* (Dinophyceae) complex: implications for species boundaries and identities. *Journal of Phycology* 50: 81-100.
- Krock B, U Tillmann, U John & AD Cembella. 2009.** Characterization of azaspiracids in plankton size-fractions and isolation of an azaspiracid-producing dinoflagellate from the North Sea. *Harmful Algae* 8: 254-263.
- Krock B, U Tillmann, D Voß, BP Koch, R Salas, M Witt, E Potvin & HJ Jeong. 2012.** New azaspiracids in Amphidomataceae (Dinophyceae): proposed structures. *Toxicon* 60: 830-839.
- López-Rivera A, K O'Callaghan, M Moriarty, D O'Driscoll, B Hamilton, M Lehane, KJ James & A Furey. 2010.** First evidence of azaspiracids (AZAs): A family of lipophilic polyether marine toxins in scallops (*Argopecten purpuratus*) and mussels (*Mytilus chilensis*) collected in two regions of Chile. *Toxicon* 55: 692-701.
- Luo Z, H Gu, B Krock & U Tillmann. 2013.** *Azadinium dalianense*, a new dinoflagellate from the Yellow Sea, China. *Phycologia* 52: 625-636.
- Luo Z, B Krock, KN Mertens, AM Price, RE Turner, NN Rabalais & H Gu. 2016.** Morphology, molecular phylogeny and azaspiracid profile of *Azadinium poporum* (Dinophyceae) from the Gulf of Mexico. *Harmful Algae* 55: 56-65.
- Massucatto A, AL Siqueira-Pilotto & MA Schramm. 2014.** Investigaçao da presença de Azaspirácidos em recursos pesqueiros do Canal do Linguado. *Seminário de Pesquisa, Extensão e Inovação do Instituto Federal Santa Catarina*. <<http://eventoscientificos.ifsc.edu.br/index.php/sepei/sepei2014/paper/viewFile/407/398>>
- Ochoa N, O Gómez, S Sánchez & E Delgado. 1999.** Diversidad de diatomeas y dinoflagelados marinos del Perú. *Boletín del Instituto del Mar del Perú* 18: 1-14.
- Ochoa N, MH Taylor, S Purca & E Ramos. 2010.** Intra- and interannual variability of nearshore phytoplankton biovolume and community changes in the northern Humboldt Current system. *Journal of Plankton Research* 32: 843-855.
- Okolodkov YB & JD Dodge. 1995.** Redescription of the planktonic dinoflagellate *Peridiniella danica* (Paulsen) comb. nov. and its distribution in the N.E. Atlantic. *European Journal of Phycology* 30: 299-306.
- Potvin É, HJ Jeong, NST Kang, U Tillmann & B Krock. 2012.** First report of the photosynthetic dinoflagellate genus *Azadinium* in the Pacific Ocean: Morphology and molecular characterization of *Azadinium* cf. *poporum*. *Journal of Eukaryotic Microbiology* 59: 145-156.

- Potvin É, YJ Hwang, YD Yoo, JS Kim & HJ Jeong. 2013.** Feeding by heterotrophic protists and copepods on the photosynthetic dinoflagellate *Azadinium* cf. *poporum* from western Korean waters. *Aquatic Microbial Ecology* 68: 143-158.
- Rojas de Mendiola B. 1979.** Red tides along the Peruvian coast. In: Taylor DL & HH Seliger (eds). *Toxic dinoflagellate blooms*, pp. 183-190. Elsevier, New York.
- Rossi R, C Dell'Aversano, B Krock, P Ciminiello, I Percopo, U Tillmann, V Soprano & A Zingone. 2017.** Mediterranean *Azadinium dexteroporum* (Dinophyceae) produces AZA-35 and six novel azaspiracids: a structural study by a multi-platform mass spectrometry approach. *Analytical and Bioanalytical Chemistry* 409: 1121-1134.
- Salas R, U Tillmann, U John, J Kilcoyne, A Burson, C Cantwell, P Hess, T Jauffrais & J Silke. 2011.** The role of *Azadinium spinosum* (Dinophyceae) in the production of Azaspiracid Shellfish Poisoning in mussels. *Harmful Algae* 10: 774-783.
- Sánchez G. 2000.** Peru. In: Sheppard C (ed). *Seas at the Millennium: An environmental evaluation*, pp. 687-697. Pergamon, Amsterdam.
- Sánchez S & E Delgado. 1996.** Mareas rojas en el área del Callao (12°S) 1980-1995. Informe Progresivo, Instituto del Mar del Perú 44: 19-37.
- Satake M, K Ofuji, K James, A Furey & T Yasumoto. 1998.** New toxic events caused by Irish mussels. In: Reguera B, J Blanco, ML Fernández & T Wyatt (eds). *Harmful Algae*, pp. 468-469. Xunta de Galicia, International Oceanographic Commission of UNESCO, Santiago de Compostela.
- Smayda TJ. 1997.** Harmful algal blooms: their ecophysiology and general relevance to phytoplankton blooms in the sea. *Limnology and Oceanography* 42: 1137-1153.
- Smith KF, L Rhodes, DT Harwood, J Adamson, C Moisan, R Munday & U Tillmann. 2016.** Detection of *Azadinium poporum* in New Zealand: the use of molecular tools to assist with species isolations. *Journal of Applied Phycology* 28: 1125-1132.
- Strickland J & T Parsons. 1972.** Practical handbook of seawater analysis. Fisheries Research Board of Canada, Bulletin 167: 1-311.
- Tillmann U & R Akselman. 2016.** Revisiting the 1991 algal bloom in shelf waters off Argentina: *Azadinium luciferelloides* sp. nov. (Amphidomataceae, Dinophyceae) as the causative species in a diverse community of other amphidomataceans. *Phycological Research* 64: 160-175.
- Tillmann U, M Elbrächter, B Krock, U John & A Cembella. 2009.** *Azadinium spinosum* gen. et sp. nov. (Dinophyceae) identified as a primary producer of azaspiracid toxins. *European Journal of Phycology* 44: 63-79.
- Tillmann U, M Elbrächter, U John, B Krock & A Cembella. 2010.** *Azadinium obesum* (Dinophyceae), a new nontoxic species in the genus that can produce azaspiracid toxins. *Phycologia* 49: 169-182.
- Tillmann U, S Söhner, E Nézan & B Krock. 2012a.** First record of *Azadinium* from the Shetland Islands including the description of *A. polongum* sp. nov. *Harmful Algae* 20: 142-155.
- Tillmann U, R Salas, M Gottschling, B Krock, D O'Driscoll & M Elbrächter. 2012b.** *Amphidoma languida* sp. nov. (Dinophyceae) reveals a close relationship between *Amphidoma* and *Azadinium*. *Protist* 163: 701-719.
- Tillmann U, R Salas, T Jauffrais, P Hess & J Silke. 2014a.** AZA: The producing organisms, Biology and trophic transfer. In: Botana LM (ed). *Seafood and freshwater Toxins*, pp. 773-798. CRC Press, Boca Raton.
- Tillmann U, M Gottschling, E Nézan, B Krock & G Bilien. 2014b.** Morphological and molecular characterization of three new *Azadinium* species (Amphidomataceae, Dinophyceae) from the Irminger Sea. *Protist* 165: 417-444.
- Tillmann U, M Borel, F Barrera, R Lara, B Krock, G Almandoz & N Trefault. 2016.** *Azadinium poporum* (Dinophyceae) from the South Atlantic off the Argentinean coast produce AZA-2. *Harmful Algae* 51: 40-55.
- Tillmann U, N Trefault, B Krock, G Parada-Pozo, R De la Iglesia & M Vásquez. 2017.** Identification of *Azadinium poporum* (Dinophyceae) in the Southeast Pacific: morphology, molecular phylogeny, and azaspiracid profile characterization. *Journal of Plankton Research* 39: 350-367.
- Trainer VL, GC Pitcher, B Reguera & TJ Smayda. 2010.** The distribution and impacts of harmful algal bloom species in eastern boundary upwelling systems. *Progress in Oceanography* 85: 33-52.
- Trainer VL, L Moore, BD Bill, NG Adams, N Harrington, J Borchert, DAM Da Silva & BTL Eberhard. 2013.** Diarrhetic shellfish toxins and other lipophilic toxins of human health concern in Washington State. *Marine Drugs* 11: 1815-1835.
- Turner AD & AB Goya. 2015.** Occurrence and profiles of lipophilic toxins in shellfish harvested from Argentina. *Toxicon* 102: 32-42.
- UNESCO. 1983.** Chemical methods for use in marine environmental monitoring. Intergovernmental Oceanographic Commission. IOC Manuals and Guides 12: 1-53.
- Vera G, S Fraga, JM Franco & G Sánchez. 1999.** First record in Peru of the dinoflagellate *Alexandrium affine* Inoue and Fukuyo. Informe Progresivo, Instituto del Mar del Perú 105: 3-12.
- Zuta S & O Guillén. 1970.** Oceanografía de las aguas costeras del Perú. *Boletín Instituto del Mar del Perú* 2: 157-324.

Received 21 April 2017 and accepted 4 December 2017

Associate Editor: Pilar Muñoz M.

**Supplement 1. Phytoplankton species and abundances, February 2014 (for location of stations see Fig. 1) / Especies de fitoplancton y abundancias celulares, febrero 2014 (para localización de estaciones vea Fig. 1)**

Station	1		2		3		4		7		8		9		11	
	0	10	0	10	0	10	0	10	0	10	0	10	0	10	0	10
Sea Surface temperature (°C)	21.0		20.8		20.5		19.8		18.0		19.4		19.6		19.2	
Plankton volume (mL m <sup>-3</sup> )	0.166	n.d.	0.483	n.d.	n.d.	n.d.	0.030	n.d.	0.664	n.d.	0.709	n.d.	0.377	n.d.	0.573	n.d.
Chlorophyll (µg L <sup>-1</sup> )	0.57	0.13	2.02	0.18	2.58	0.05	1.89	0.05	0.23	0.18	1.37	0.46	1.32	0.10	1.24	0.70
<b>Diatoms (cells L<sup>-1</sup>)</b>																
<i>Achnanthes longipes</i>	0	0	0	0	0	0	0	0	0	0	140	0	0	0	0	0
<i>Actinocyclus</i> sp.	0	0	0	0	0	440	40	2,000	940	3,480	0	3,400	0	3,760	0	140
<i>Actinoptychus senarius</i>	0	80	0	0	0	0	140	0	40	0	0	0	0	40	0	0
<i>Amphiprora</i> sp.	580	16,360	560	0	2,520	480	48,680	620	80	1,760	360	400	440	200	20	200
<i>Amphora</i> sp.	1,720	300	640	1,760	2,080	400	2,580	960	240	320	980	80	280	20	240	0
<i>Cerataulina pelagica</i>	0	0	0	200	6,080	0	0	0	0	0	0	0	0	0	0	0
<i>Chaetoceros affinis</i>	100	0	1,720	1,640	0	0	12,120	960	0	240	2,180	240	300	0	200	680
<i>Chaetoceros compressus</i>	0	0	0	0	320	0	0	0	0	0	0	0	0	0	0	0
<i>Chaetoceros danicus</i>	0	0	0	0	40	0	0	0	0	0	0	0	0	0	0	0
<i>Chaetoceros debilis</i>	0	0	0	680	0	0	0	0	0	0	0	0	0	0	0	0
<i>Chaetoceros didymus</i>	0	140	0	0	0	0	0	560	0	0	520	0	640	0	0	0
<i>Chaetoceros lorenzianus</i>	0	0	0	0	0	0	0	0	0	0	460	0	0	120	0	0
<i>Chaetoceros</i> sp.	0	0	7,000	0	0	0	0	0	0	0	0	0	0	0	0	0
<i>Coscinodiscus centralis</i>	0	0	0	0	0	0	0	0	0	0	0	0	0	40	60	0
<i>Coscinodiscus granii</i>	0	0	0	0	0	0	0	40	0	0	20	100	0	20	40	0
<i>Coscinodiscus perforatus</i>	0	40	0	0	20	0	40	60	120	0	500	320	320	420	740	120
<i>Cyclotella</i> sp.	100	0	0	0	0	0	80	0	480	0	0	380	220	80	0	0
<i>Cylindroteca closterium</i>	103,000	0	1,120	720	37,000	360	32,400	2,400	160	80	1,920	320	1,600	0	1,440	300
<i>Dactyliosolen fragilissimus</i>	1,420	0	0	40	0	0	7,040	0	0	0	660	0	0	0	40	0
<i>Detonula pumila</i>	240	0	0	0	0	0	0	0	0	0	0	0	0	0	0	0
<i>Ditylum brightwellii</i>	680	80	160	320	1,240	320	5,200	340	80	0	180	20	0	0	0	0
<i>Entomoneis alata</i> v. <i>alata</i>	640	20	1,560	8,000	1,040	480	5,380	1,100	220	960	140	320	60	400	20	440
<i>Eucampia zoodiacus</i>	1,560	0	80	500	0	0	14,040	1,040	0	8,080	6,320	28,100	6,340	0	0	0
<i>Fragilariopsis doliolus</i>	0	0	200	0	0	320	80	23,200	1,500	560	80	0	100	120	0	6,020
<i>Guinardia delicatula</i>	0	0	0	240	0	0	0	0	0	0	0	0	300	0	0	0

**Supplement 1. Continued / Continuación**

**Phytoplankton species and abundances, February 2014 (for location of stations see Fig. 1) / Especies de fitoplancton y abundancias celulares, febrero 2014 (para localización de estaciones vea Fig. 1)**

Station	1		2		3		4		7		8		9		11	
	0	10	0	10	0	10	0	10	0	10	0	10	0	10	0	10
<i>Guinardia striata</i>	140	0	0	0	240	60	300	0	140	320	11,920	0	2,600	0	40	220
<i>Rhizosolenia robusta</i>	0	0	0	0	0	0	0	20	0	0	0	0	0	0	0	0
<i>Gyrosigma</i> sp.	20	0	0	0	40	0	0	40	0	0	0	0	0	0	0	0
<i>Hemiaulus sinensis</i>	0	0	0	0	0	280	1,080	0	0	0	500	1,120	0	0	0	0
<i>Lauderia annulata</i>	0	0	0	0	0	0	1,280	0	0	0	100	0	60	0	300	0
<i>Leptocylindrus danicus</i>	409,000	60	16,520	0	74,000	0	264,000	940	80	0	4,120	0	1,320	0	1,240	0
<i>Leptocylindrus minimus</i>	0	0	0	0	0	0	201,000	0	0	0	0	0	0	0	0	0
<i>Licmophora abbreviata</i>	0	0	0	0	0	0	0	0	0	0	0	0	0	20	0	0
<i>Lithodesmium undulatum</i>	0	240	0	1,040	53,000	600	4,620	320	0	0	2,260	2,240	840	180	740	580
<i>Navicula</i> sp.	0	0	0	2,000	0	0	0	0	0	0	0	0	0	0	0	220
<i>Odontella aurita</i>	0	240	0	0	0	0	0	0	0	160	0	2,900	0	320	0	0
<i>Planktoniella sol</i>	0	0	40	0	0	0	0	80	260	160	100	40	20	160	20	140
Pennatae	0	400	0	480	0	320	1,000	0	1,000	0	3,000	0	0	1,000	0	0
<i>Pleurosigma</i> sp.	0	140	120	40	40	360	40	760	640	1,840	40	2,380	20	700	0	240
<i>Proboscia alata</i>	20	0	0	0	0	0	40	40	0	0	180	0	0	0	0	0
<i>Proboscia alata</i> var <i>indica</i>	0	0	0	0	0	0	0	0	0	80	0	0	0	0	0	0
<i>Pseudo-nitzschia seriata</i> (complejo)	0	0	0	0	0	0	180	0	0	0	0	0	0	0	0	0
<i>Pseudosolenia calcar-avis</i>	0	0	0	0	0	0	0	40	0	0	20	0	0	0	0	0
<i>Rhizosolenia chunii</i>	0	0	0	0	0	0	200	0	0	0	0	0	0	0	0	0
<i>Rhizosolenia robusta</i>	0	0	0	40	0	0	0	0	0	0	40	0	20	0	0	0
<i>Rhizosolenia styliformis</i>	0	0	0	0	0	0	40	0	0	0	0	0	0	0	0	0
<i>Roperia tessellata</i>	0	0	0	0	0	0	0	0	0	0	0	60	0	0	0	0
<i>Skeletonema costatum</i>	1,201,000	79,000	5,440	35,240	556,000	9,600	354,000	2,520	0	320	3,480	0	0	0	0	460
<i>Thalassionema frauenfeldii</i>	0	120	0	0	1,280	0	160	0	0	0	60	0	140	0	0	0
<i>Thalassionema nitzschioides</i>	11,720	2,260	7,760	23,840	105,000	3,720	8,040	6,680	8,040	7,040	133,000	3,560	125,000	2,300	123,000	14,360
<i>Thalassiosira angulata</i>	0	0	0	160	0	0	0	0	0	880	0	20	0	0	0	180
<i>Thalassiosira anguste-lineata</i>	560	0	0	0	0	0	2,680	0	3,500	520	1,440	42,200	620	7,640	760	180
<i>Thalassiosira mendiolana</i>	0	0	0	0	120	0	0	0	0	29,120	0	2,040	0	0	0	120
<i>Thalassiosira subtilis</i>	372,000	8,640	36,000	143,000	204,000	11,600	2,250	115,000	34,360	6,760	32,480	7,460	11,800	5,700	7,760	251,000
<i>Thalassiosira</i> sp.	400	0	0	0	0	0	0	0	0	21,280	0	0	0	420	0	324,000
<i>Thalassiotrix longissima</i>	20	20	0	0	0	0	120	20	0	0	0	0	0	0	0	0
Total diatoms	2,104,920	108,140	78,920	219,240	1,044,060	29,340	968,850	159,740	51,880	83,960	207,200	97,700	153,040	23,660	136,660	599,600

Supplement 1. Continued / Continuación

Phytoplankton species and abundances, February 2014 (for location of stations see Fig. 1) / Especies de fitoplancton y abundancias celulares, febrero 2014 (para localización de estaciones vea Fig. 1)

Station	1		2		3		4		7		8		9		11	
	0	10	0	10	0	10	0	10	0	10	0	10	0	10	0	10
<b>Dinoflagellates (cells L<sup>-1</sup>)</b>																
<i>Azadinium</i> sp.	6,000	1,380	664,000	0	1,056,000	1,000	0	7,000	0	5,440	0	9,000	0	0	0	0
<i>Tripos azoricum</i>	0	0	0	0	0	0	0	20	0	0	0	0	0	0	0	0
<i>Tripos buceros</i>	200	100	40	1,200	120	0	160	0	20	640	80	1,820	0	340	0	0
<i>Tripos dens</i>	0	0	40	0	160	0	20	0	0	0	0	0	0	0	0	200
<i>Tripos furca</i>	0	0	80	0	4,160	0	820	220	1,480	1,320	180	40	140	20	80	4,840
<i>Tripos fusus</i> var. <i>fusus</i>	0	0	0	20	0	0	0	160	380	240	0	0	0	0	0	220
<i>Tripos</i> sp. (atípico)	0	0	0	0	0	40	0	0	0	0	0	0	0	0	0	0
<i>Dinophysis acuminata</i>	0	0	0	0	80	0	40	500	40	400	0	60	0	100	0	100
<i>Dinophysis caudata</i>	0	0	40	80	640	0	120	2,000	1,400	840	20	260	20	60	0	4,140
<i>Dinophysis rotundata</i>	40	0	0	0	0	0	20	20	40	80	0	0	0	80	0	0
<i>Dinophysis tripos</i>	0	0	0	0	0	0	0	20	0	0	0	0	0	0	0	40
<i>Diplopeltopsis minor</i>	860	0	0	0	0	0	60	0	480	0	0	0	200	0	180	0
<i>Gonyaulax spinifera</i>	0	0	0	0	80	0	0	0	0	0	0	0	0	0	0	0
<i>Gymnodiales</i> spp.	60	0	43,000	92,000	19,000	1,560	2,000	0	0	0	0	540	0	6,000	0	3,500
<i>Gymnodinium lohmanni</i>	100	80	520	360	320	1,280	160	60	0	0	0	160	0	0	0	0
<i>Gymnodinium</i> sp.	0	0	0	5,200	0	17,680	0	0	0	0	0	0	0	0	0	0
<i>Karlodinium</i> sp.	0	0	0	0	0	0	0	0	0	6,320	0	0	0	0	0	0
<i>Oxyphysis oxytoxoides</i>	0	0	40	0	160	0	0	140	0	80	0	0	0	0	0	0
<i>Podolampas palmipes</i>	0	0	0	0	0	0	0	40	0	0	0	20	0	0	0	0
<i>Pronoctiluca pelagica</i>	0	0	0	0	0	120	0	0	0	0	0	0	0	0	0	0
<i>Prorocentrum gracile</i>	2,160	0	3,680	0	5,360	0	520	40	20	0	0	0	60	0	20	0
<i>Prorocentrum</i> cf. <i>dentatum</i>	40	0	0	0	0	0	0	0	0	0	0	0	0	0	0	0
<i>Prorocentrum micans</i>	860	20	2,360	0	19,840	0	9,480	1,740	4,400	560	20	120	240	20	2,460	120
<i>Prorocentrum cordatum</i>	11,208,000	0	63,000	0	104,000	120	0	0	0	0	0	0	0	0	0	0
<i>Protoperidinium</i> sp.	2,000	0	0	0	0	0	0	0	0	0	0	0	0	0	0	0
<i>Protoperidinium conicoides</i>	20	0	0	0	0	0	0	0	60	0	0	0	0	0	0	0
<i>Protoperidinium conicum</i>	260	20	0	0	600	0	100	80	40	0	20	20	0	160	0	480
<i>Protoperidinium crassipes</i>	0	0	40	0	80	0	0	200	0	720	0	0	0	20	0	180
<i>Protoperidinium depressum</i>	20	0	80	0	80	0	140	0	240	0	0	0	0	20	0	60
<i>Protoperidinium excentricum</i>	0	0	40	0	80	0	140	80	40	80	0	0	0	20	0	180
<i>Protoperidinium leonis</i>	20	0	40	20	200	0	20	0	0	0	0	0	0	0	0	0
<i>Protoperidinium longispinum</i>	60	0	40	120	40	0	20	480	160	240	20	20	40	100	20	220
<i>Protoperidinium mendiolae</i>	0	20	0	0	480	0	0	0	0	0	0	0	0	0	0	0

**Supplement 1. Continued / Continuación**

**Phytoplankton species and abundances, February 2014 (for location of stations see Fig. 1) / Especies de fitoplancton y abundancias celulares, febrero 2014 (para localización de estaciones vea Fig. 1)**

Station	1		2		3		4		7		8		9		11	
	0	10	0	10	0	10	0	10	0	10	0	10	0	10	0	10
<i>Protoperidinium minutum</i>	0	0	0	20	0	0	0	20	0	0	0	0	0	0	0	0
<i>Protoperidinium oblongum</i>	40	0	0	0	0	0	160	0	20	0	0	0	0	0	0	0
<i>Protoperidinium obtusum</i>	20	0	40	0	120	0	60	20	60	0	20	0	0	20	0	100
<i>Protoperidinium oceanicum</i>	40	0	0	0	0	0	20	0	0	80	0	0	40	20	0	0
<i>Protoperidinium pellucidum</i>	20	0	40	0	80	0	240	60	680	0	0	0	200	0	100	200
<i>Protoperidinium pentagonum</i>	0	0	0	0	0	0	0	0	0	80	0	0	0	0	0	80
<i>Protoperidinium peruvianum</i>	0	0	0	0	0	0	0	0	0	80	0	0	0	0	0	0
<i>Protoperidinium steinii</i>	0	0	0	0	0	0	0	0	0	0	0	0	0	0	0	100
<i>Scrippsiella trochoidea</i>	260	0	80	240	320	0	240	1,180	6,480	0	0	0	0	20	0	120
<i>Pyrocystis elegans</i>	40	0	0	0	160	0	40	20	20	0	0	0	0	0	0	20
<i>Pyrophacus horologicum</i>	20	0	0	80	120	0	160	40	80	0	40	0	0	0	0	0
Total dinoflagellates	1,122,140	1,620	777,200	99,340	1,212,280	21,800	14,740	14,140	16,140	17,200	400	12,060	940	7,000	2,860	14,900
<b>Other flagellates (cell L<sup>-1</sup>)</b>																
<i>Dictyocha fibula</i>	2,540	380	560	400	640	1,240	320	10,120	41,000	5,040	60	500	180	3,840	140	520
<i>Octactis octonaria</i>	0	0	0	0	0	0	0	20	60	400	0	0	0	80	0	160
<i>Emiliana huxleyi</i>	0	0	23,000	0	0	0	0	0	0	0	0	0	0	0	0	0
<i>Eutreptiella gymnastica</i>	180	0	80	0	0	0	520	0	0	0	0	40	40	80	4,680	220
<i>Leucocryptos marina</i>	0	0	0	8,000	24,000	0	0	2,000	4,000	2,000	0	0	0	0	0	1,000
Flagellates (not determined)	2,342,000	46,000	13,130	212,000	940,000	136,000	5,025,000	37,000	9,000	340,000	1,968,000	121,000	2,752,000	72,000	7,515,000	84,500
TOTAL other flagellates (cells L <sup>-1</sup> )	2,344,720	46,380	36,690	220,400	964,640	137,240	5,025,840	49,120	54,060	347,440	1,968,060	121,540	2,752,220	76,000	7,519,820	86,400
<b>Total phytoplankton (cells L<sup>-1</sup>)</b>	<b>15,670,780</b>	<b>156,140</b>	<b>892,890</b>	<b>539,680</b>	<b>3,220,980</b>	<b>188,380</b>	<b>6,009,430</b>	<b>223,020</b>	<b>122,080</b>	<b>448,600</b>	<b>2,175,660</b>	<b>2,313,000</b>	<b>2,906,200</b>	<b>106,660</b>	<b>7,659,340</b>	<b>700,900</b>