

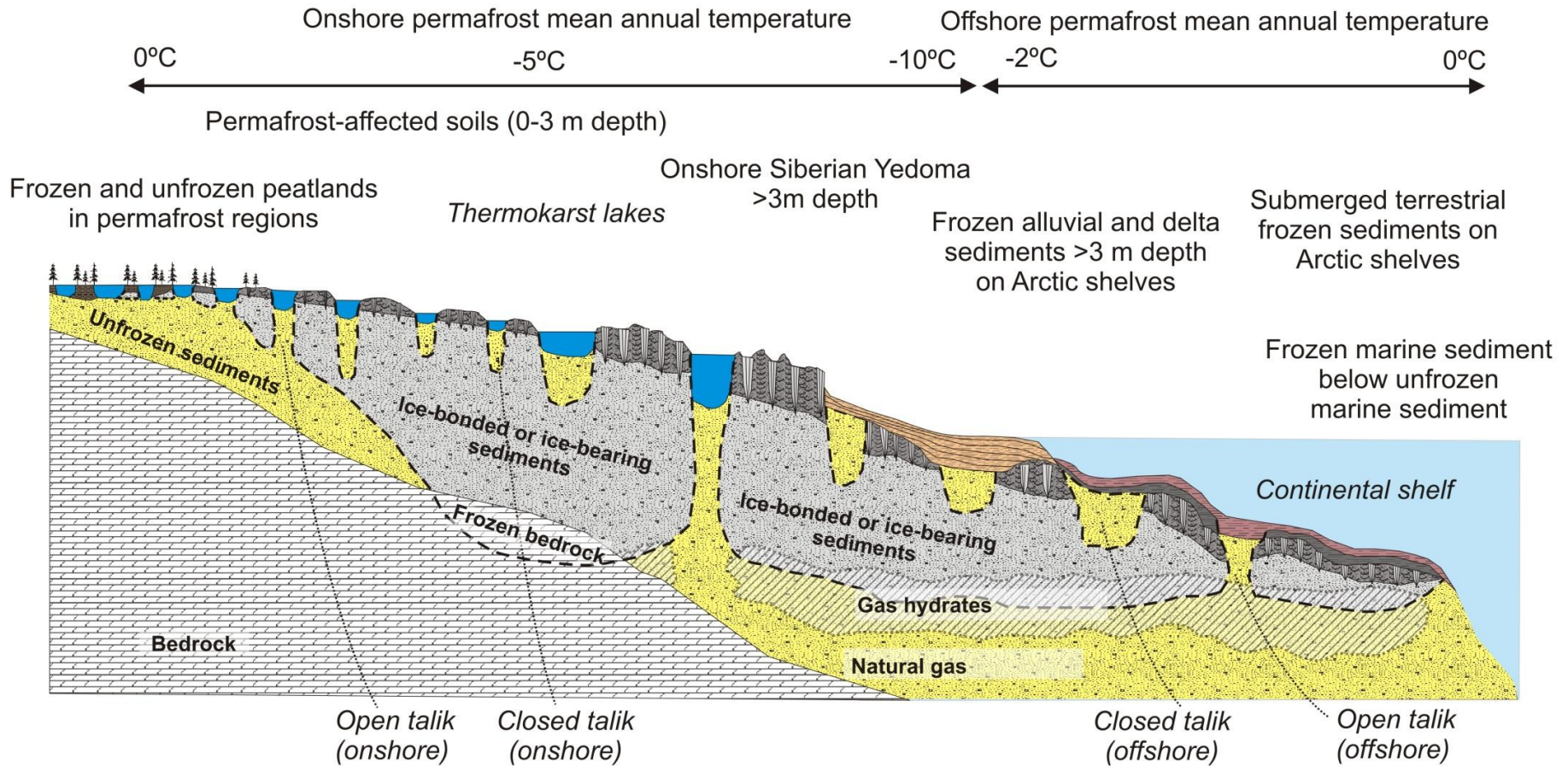
Subsea Permafrost

Подводная Мерзлота

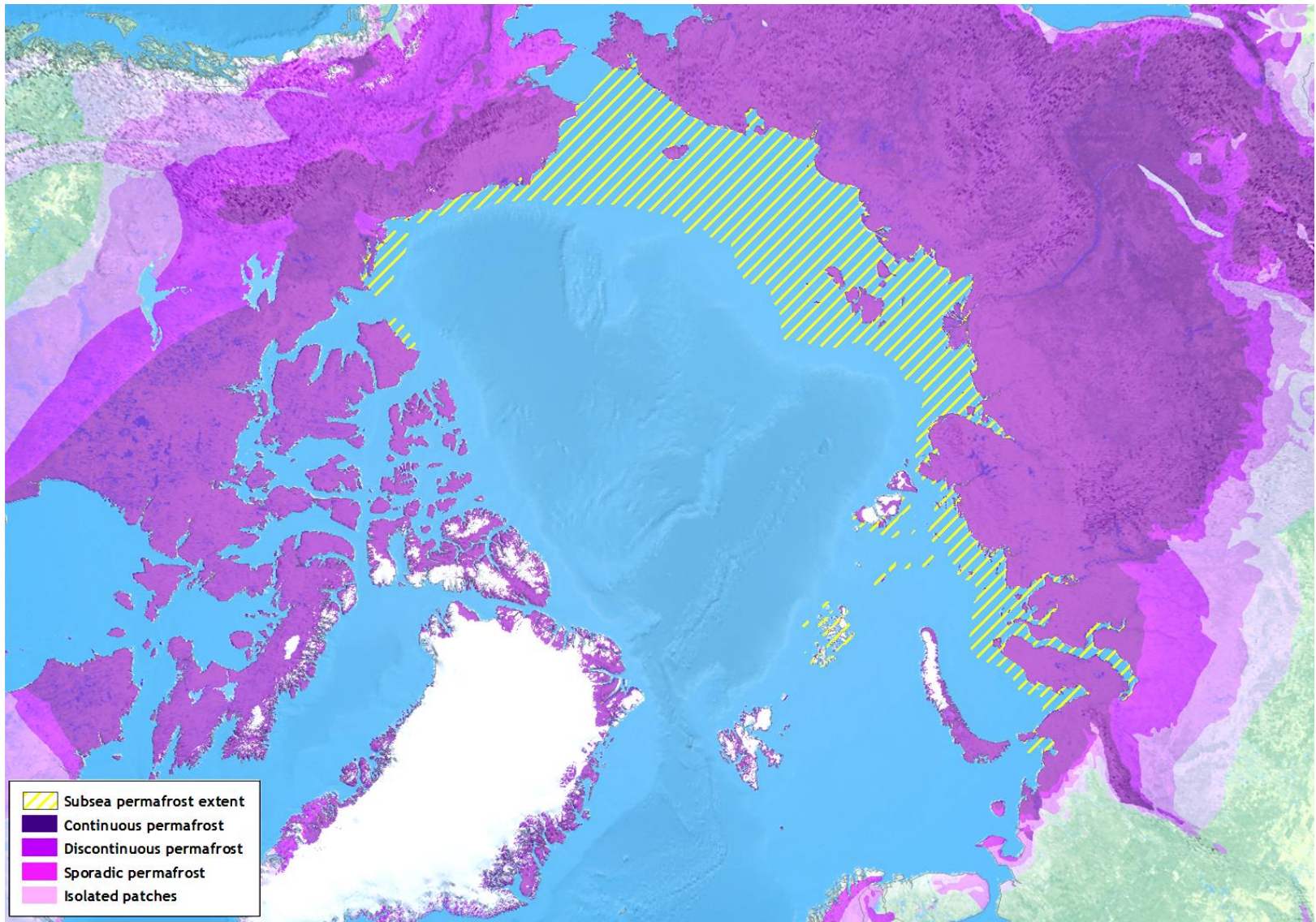
P. P. Overduin,
H.-W. Hubberten & M. N. Grigoriev



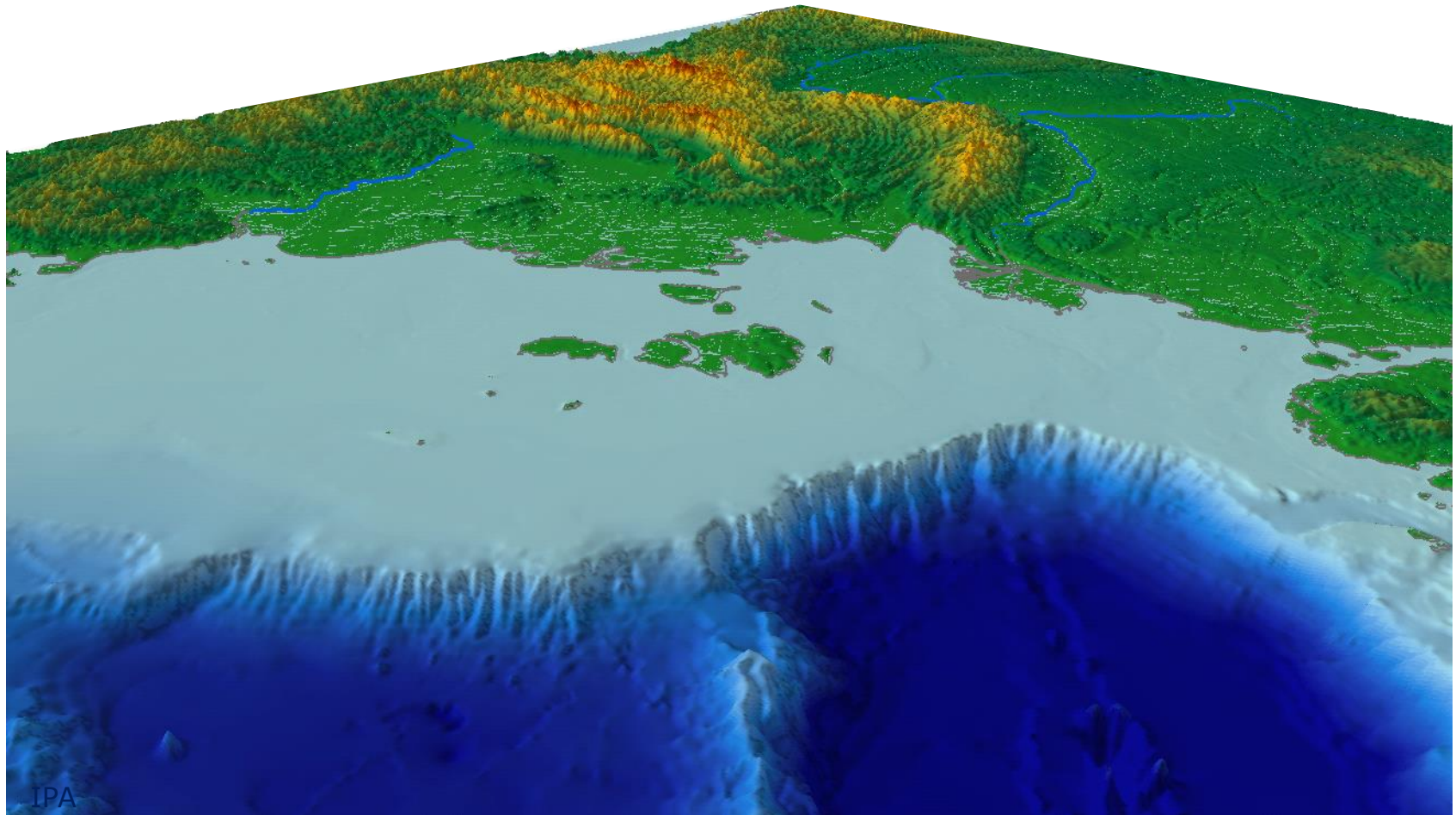
Subsea permafrost



Grosse et al. (2011)

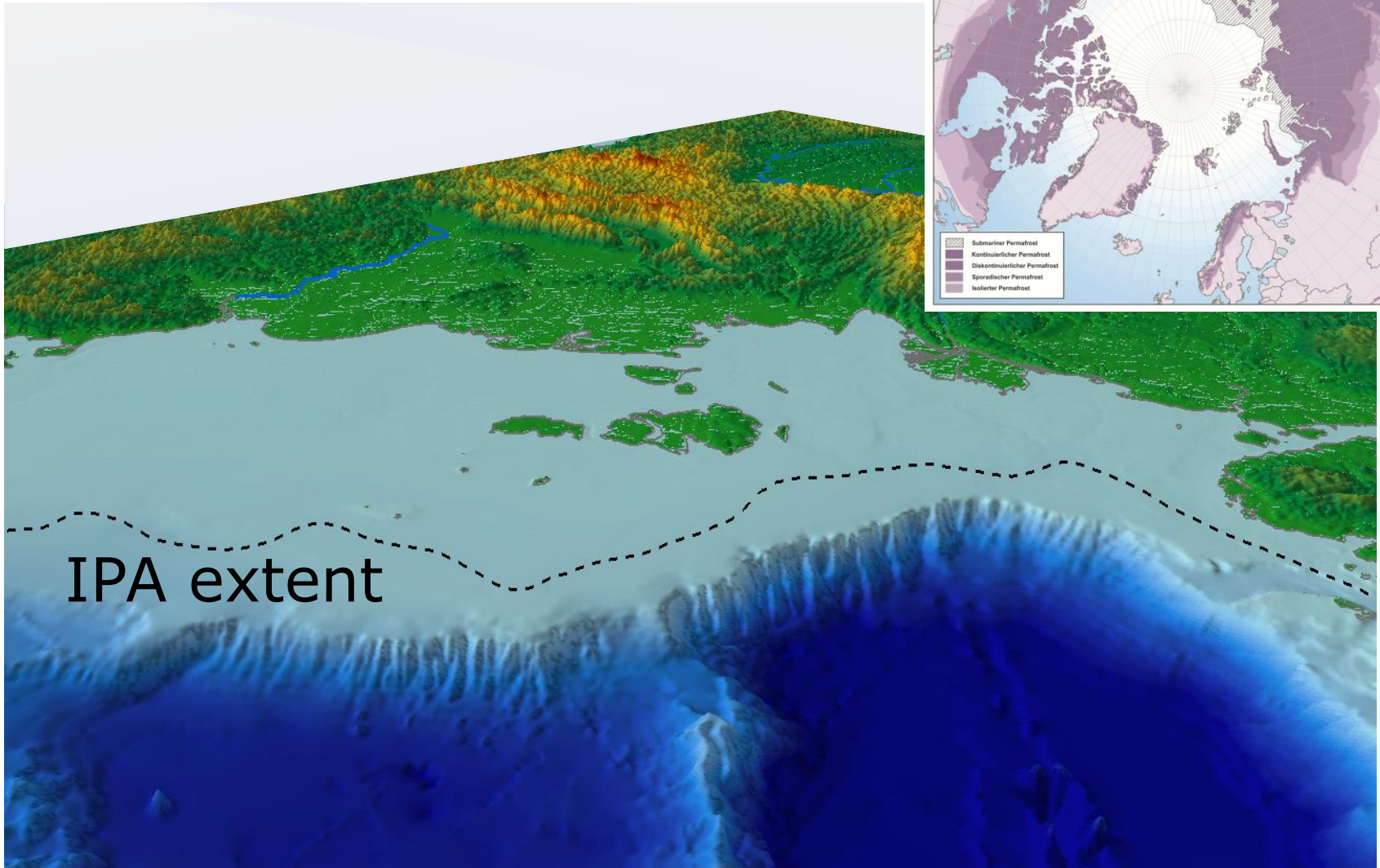


East Siberian Shelf



IPA

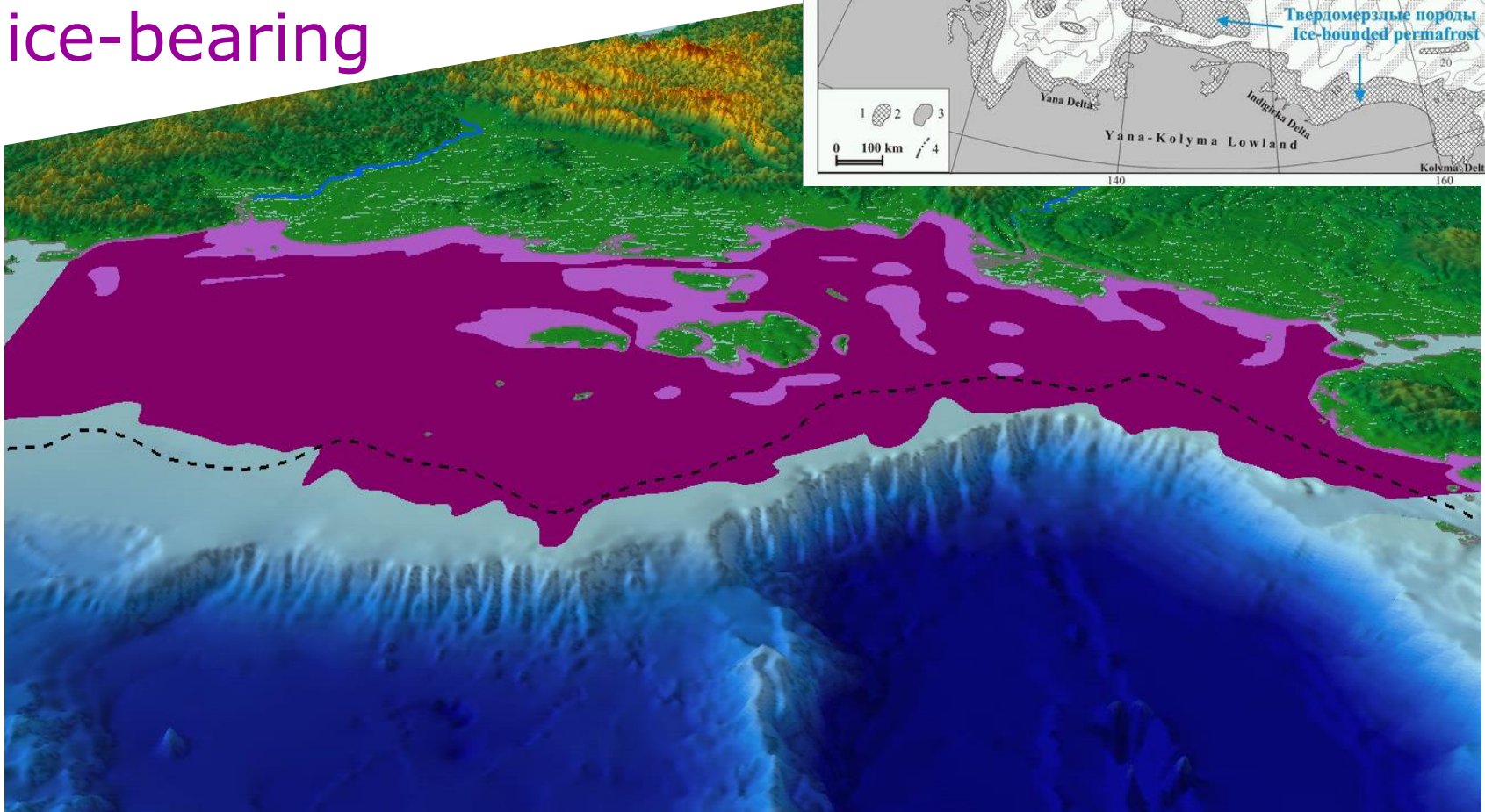
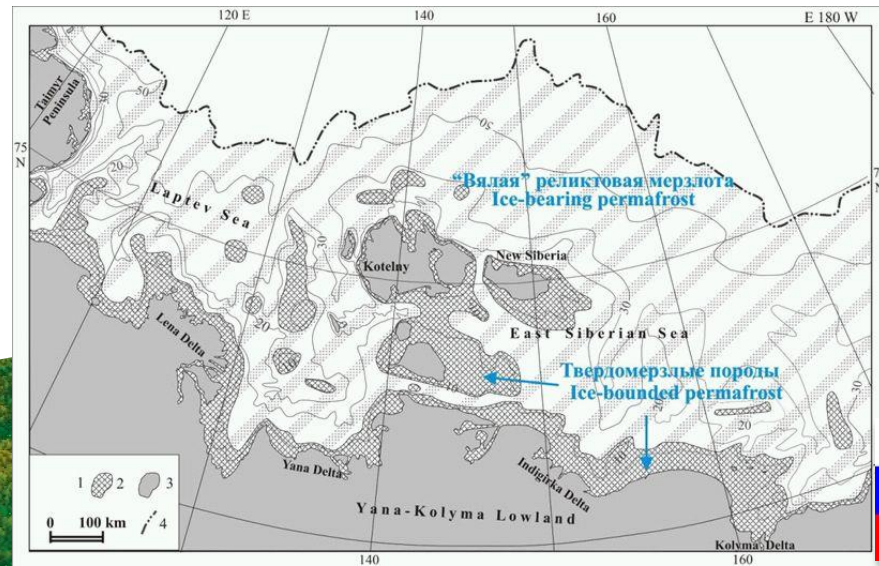
East Siberian Shelf IPA Permafrost Extent



Brown et al. (1997)

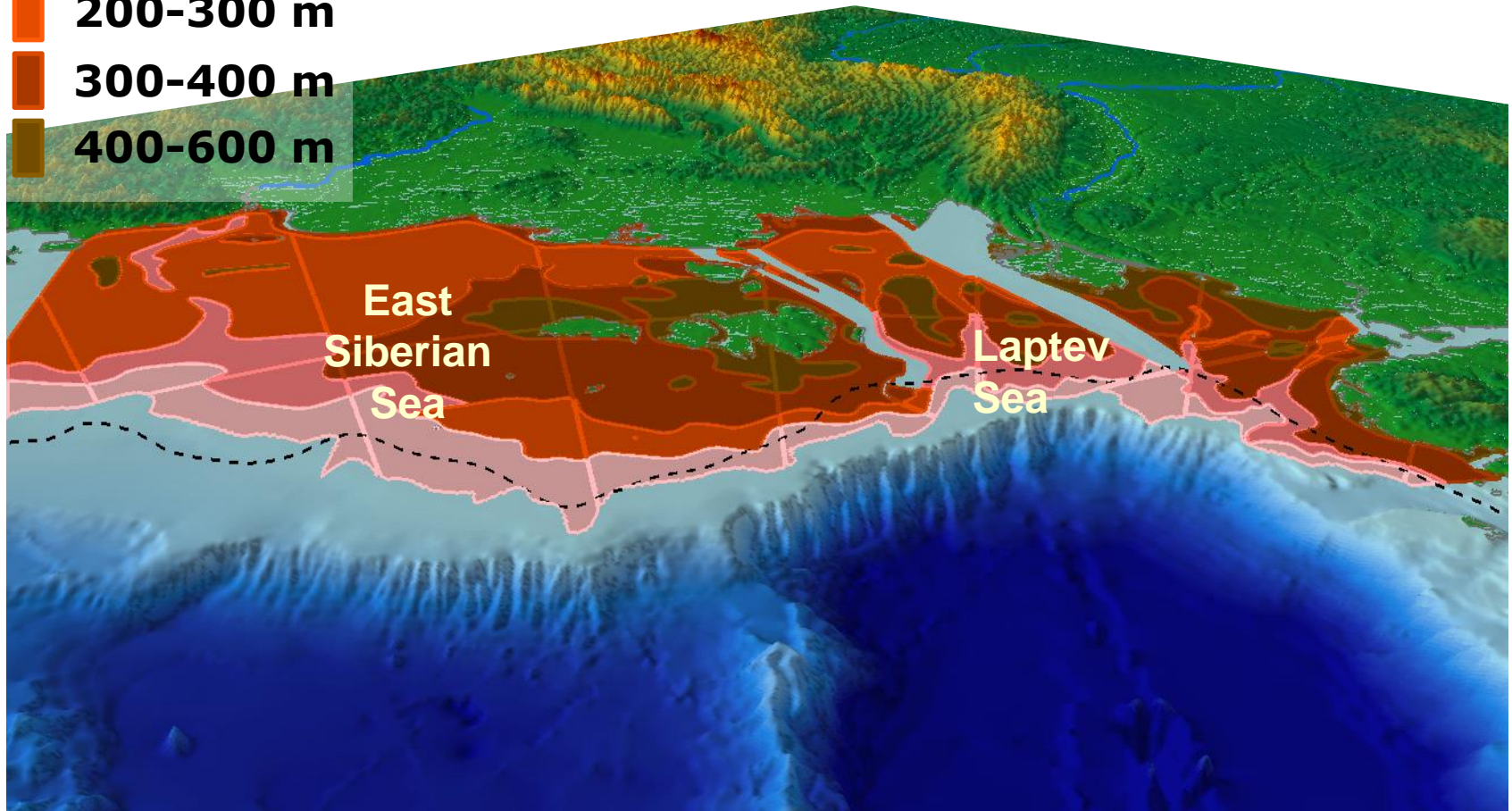
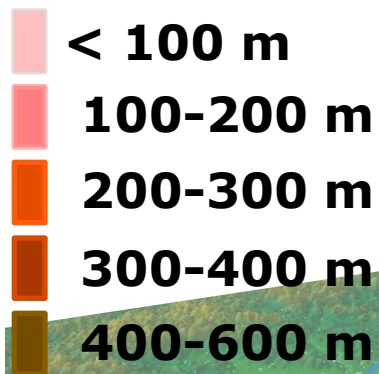
East Siberian Shelf Modelled Extent

ice-bonded
ice-bearing



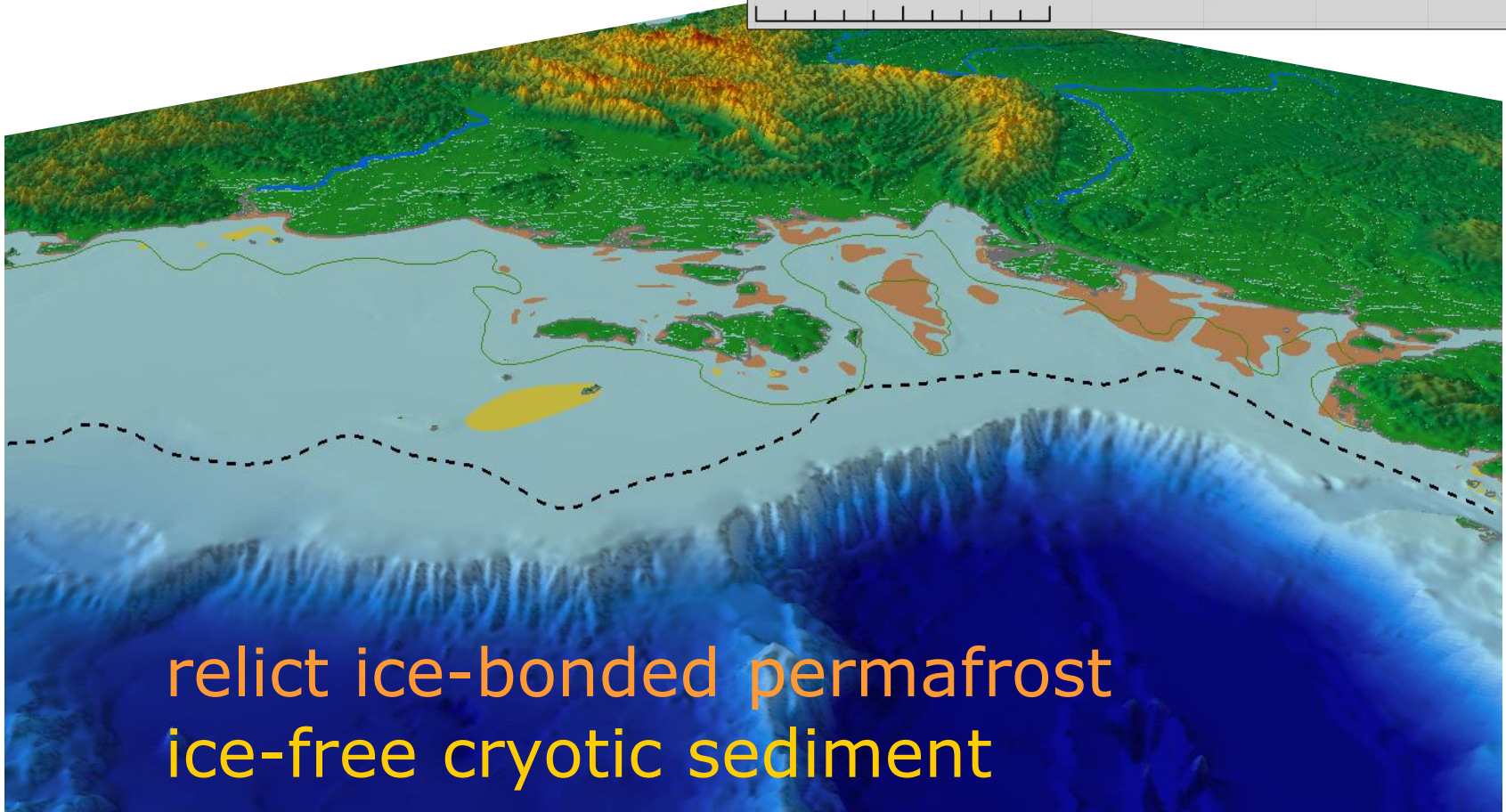
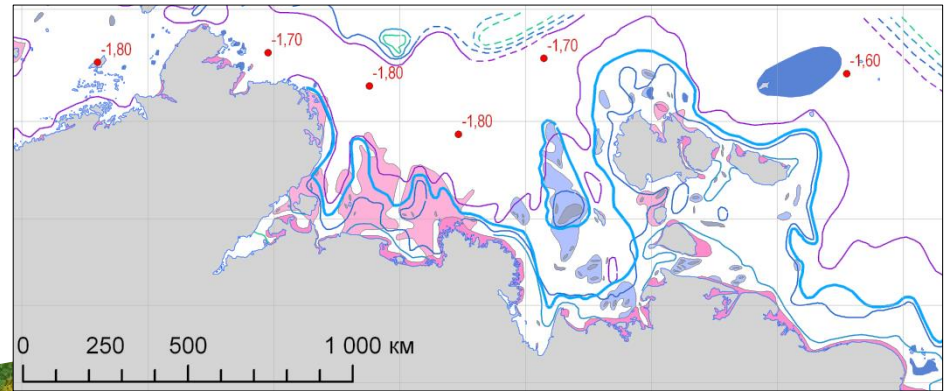
Hubberten & Romanovskii (2003)

Modelled Thickness



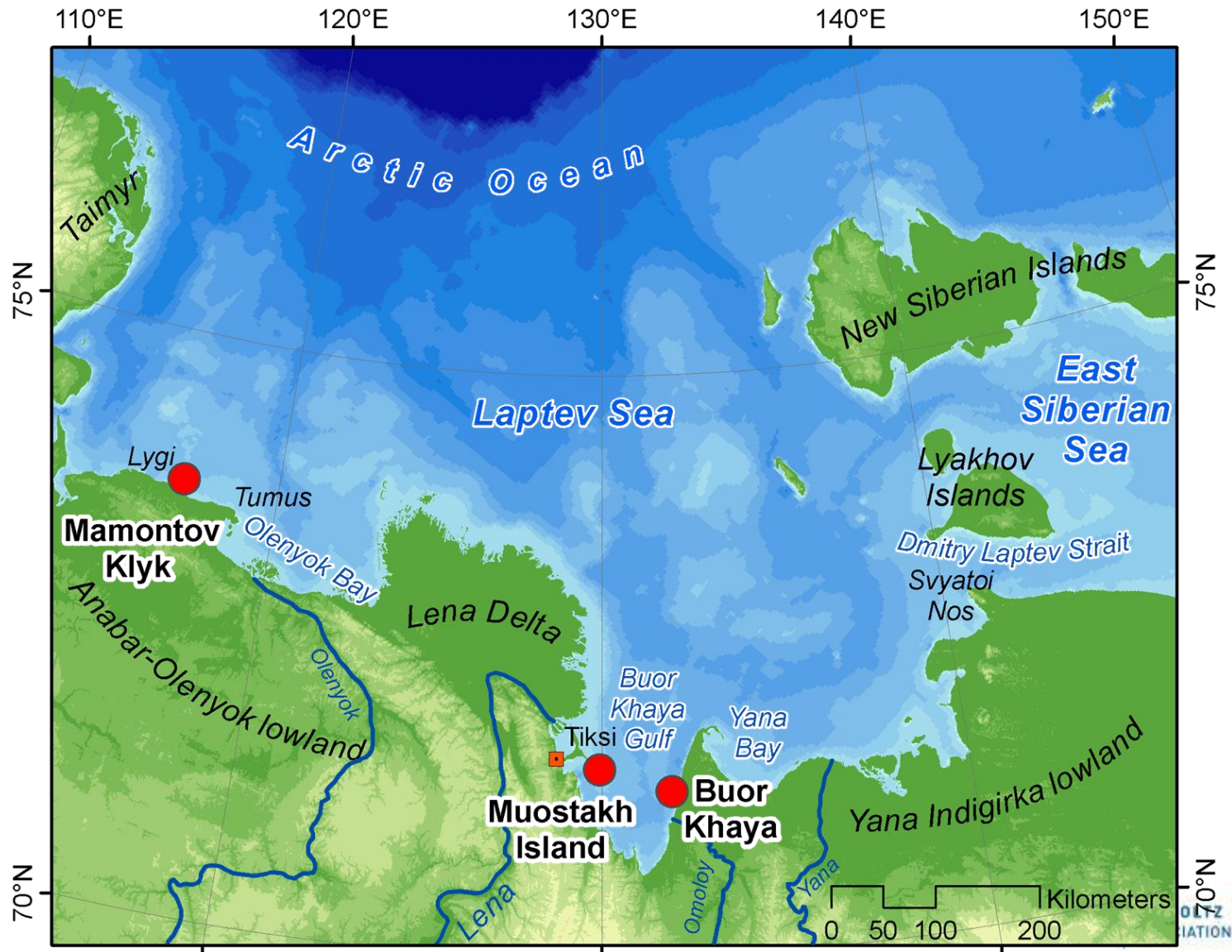
Romanovskii, Hubberten, Gavrilov, Eliseeva, Tipenko (2005)

East Siberian Shelf Modelled Extent

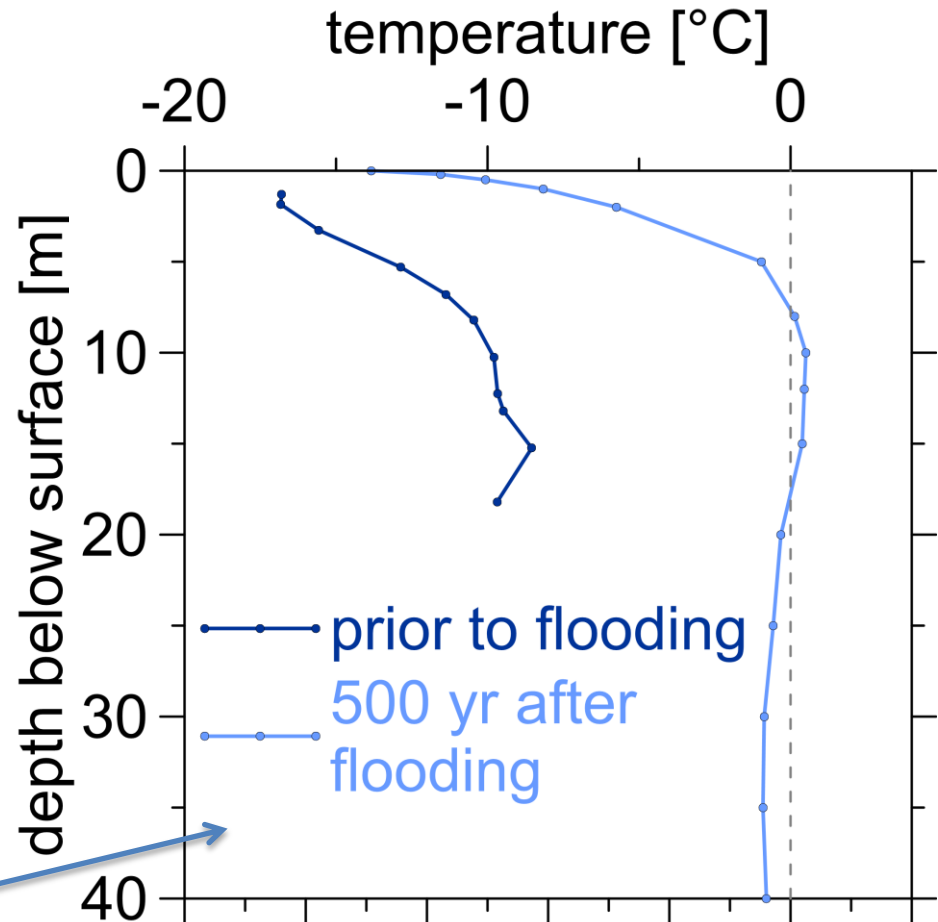
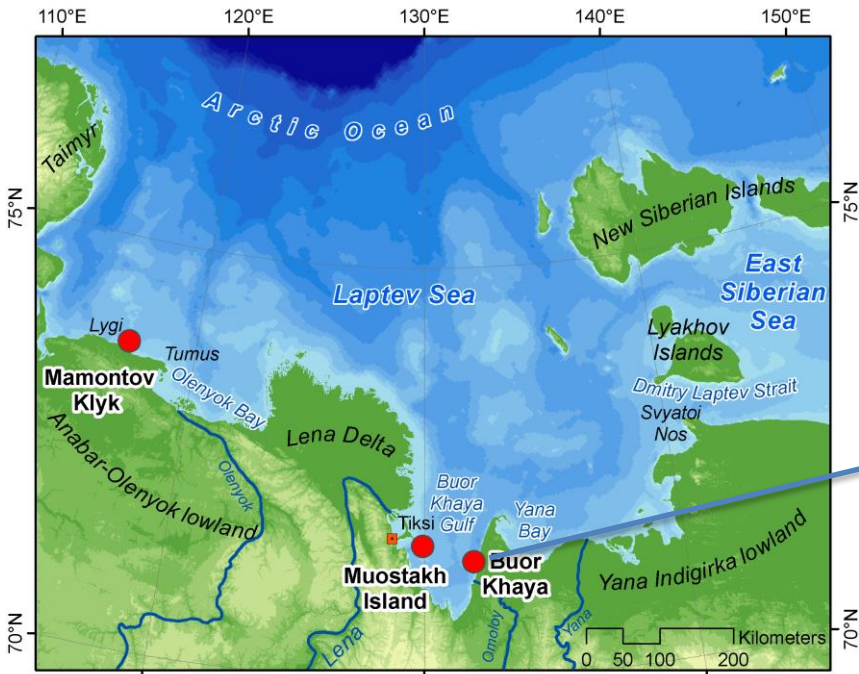


Zhigariyev (1997)

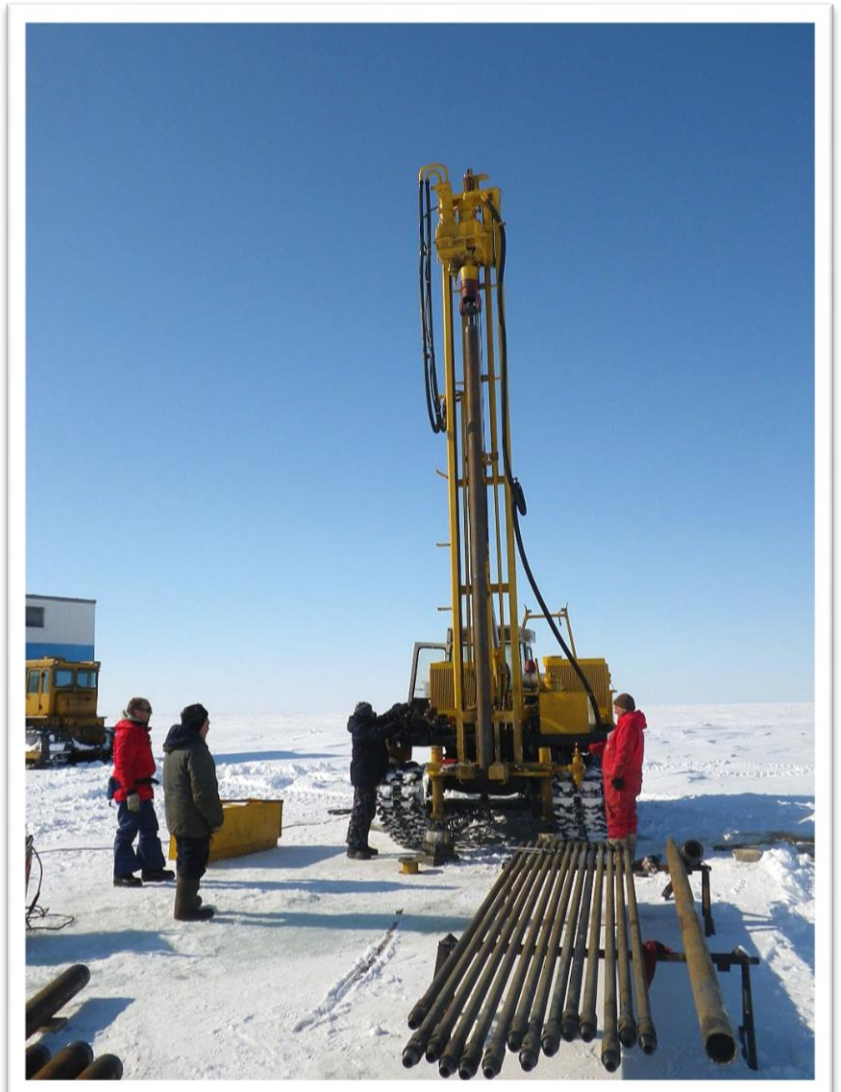
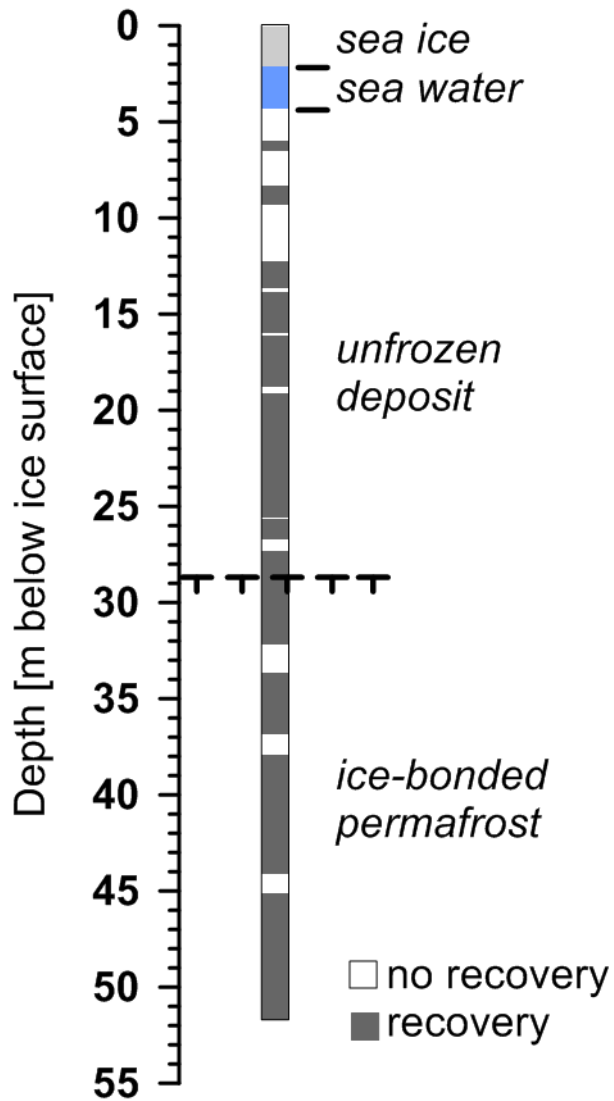
Drilling in coastal waters



Degradation follows flooding ALFRED-WEGENER-INSTITUT HELMHOLTZ-ZENTRUM FÜR POLAR- UND MEERESFORSCHUNG



Drilling method



Sediment

