

# Airborne Mapping and Laser Scanning of Trail Valley Creek and Inuvik-Tuktoyaktuk-Highway, NWT, Canada



Your feed back is desired!



- Please help us by using this online survey to decide on products that are helpful or of interest for you
- Use the QR code or: <https://www.surveymonkey.de/r/FYNGHQB>
- The survey is anonymous and only takes you 2 minutes!

## Background

- During August 2018, Airborne Laser Scanning (ALS) and high resolution photographic mapping was carried out using Alfred Wegener Institute's POLAR 5 science aircraft.
- Focus areas were Trail Valley Creek (TVC) research watershed and the Inuvik-Tuktoyaktuk-Highway (ITH; red lines in background figure).
- Point cloud data and RGB and NIR images were acquired at a flying height of about 2900 ft a.g.l, flying speed of ~120 kn, swath width of about 900 m. Resolution of images up to 7 cm.
- This flight survey was a repeat survey of the 2016 airborne POLAR 5 mission (Anders et al. 2018).

POLAR 5 at Inuvik



Inside the POLAR 5

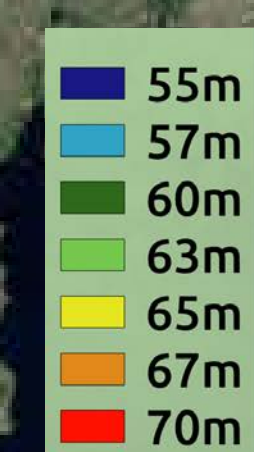
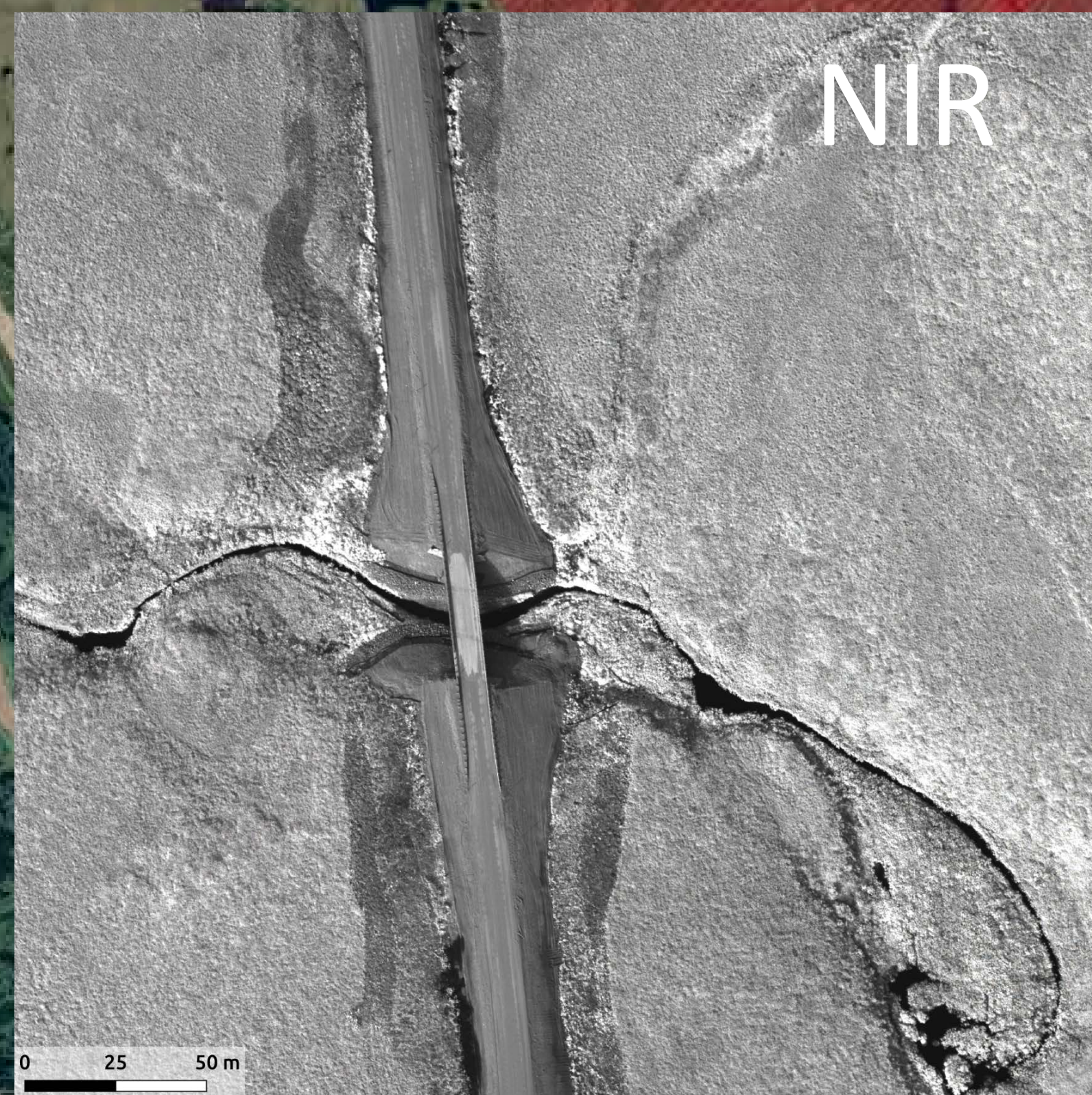


Trail Valley Creek

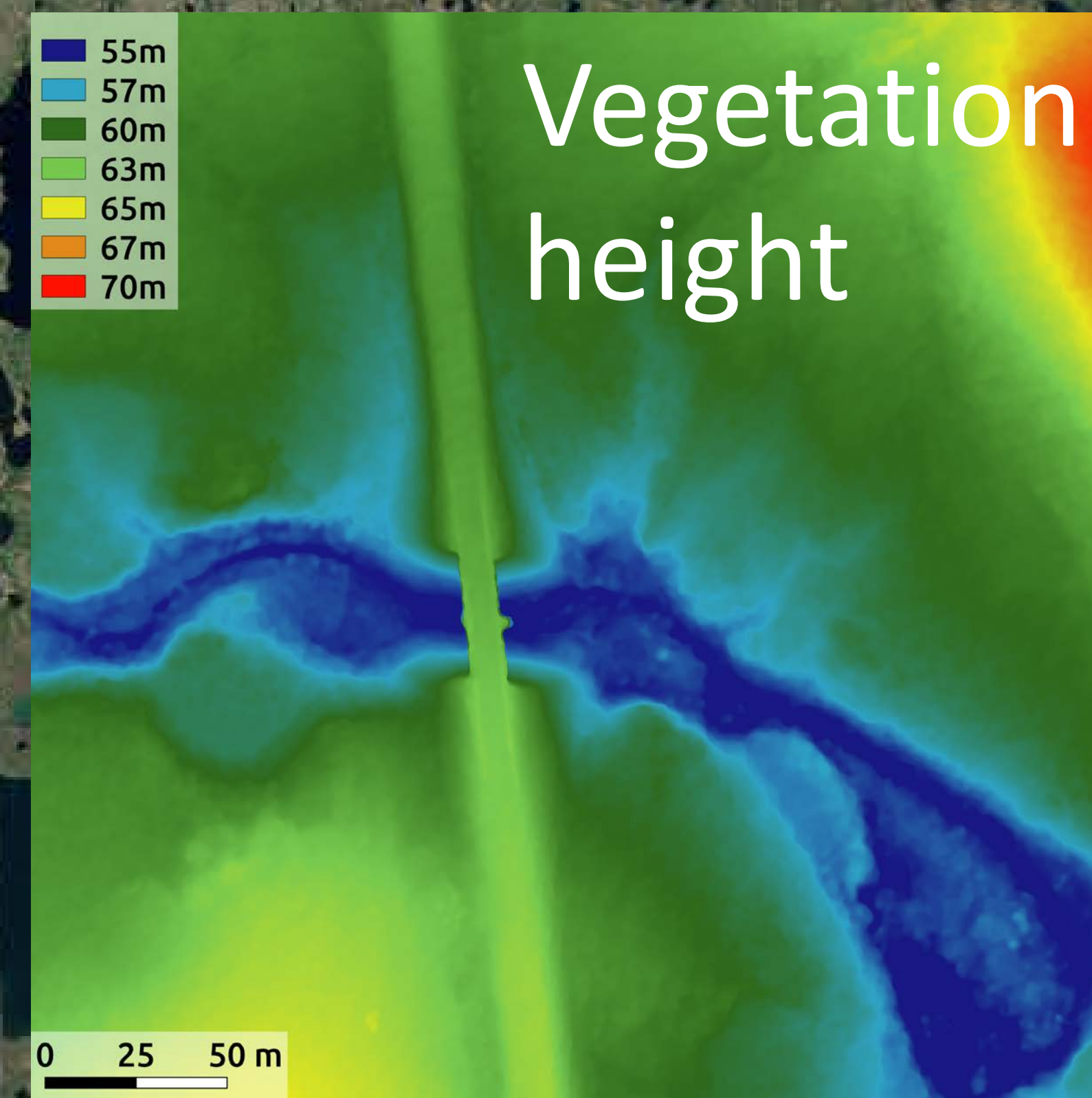
RGB



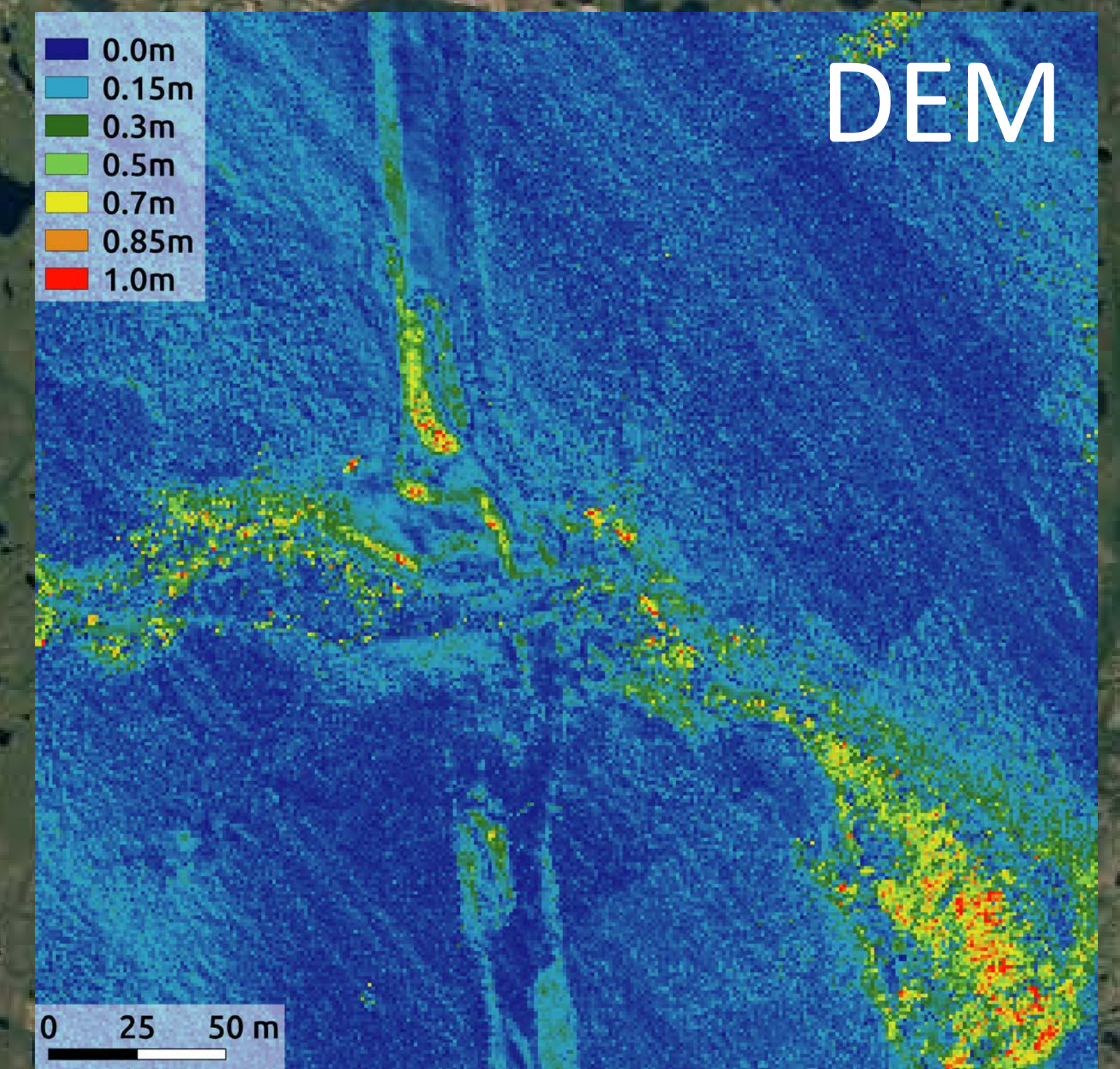
NIR



Vegetation height



DEM



Examples of aerial survey products at bridge at Trail Valley Creek

Julia Boike, Inge Grünberg, Stephan Lange  
Alfred Wegener Institute  
Helmholtz Center for Polar and Marine Research  
Telegrafenberg A45, 14473 Potsdam, Germany  
Contact: [Julia.boike@awi.de](mailto:Julia.boike@awi.de)

Inuvik

0 10 20 km