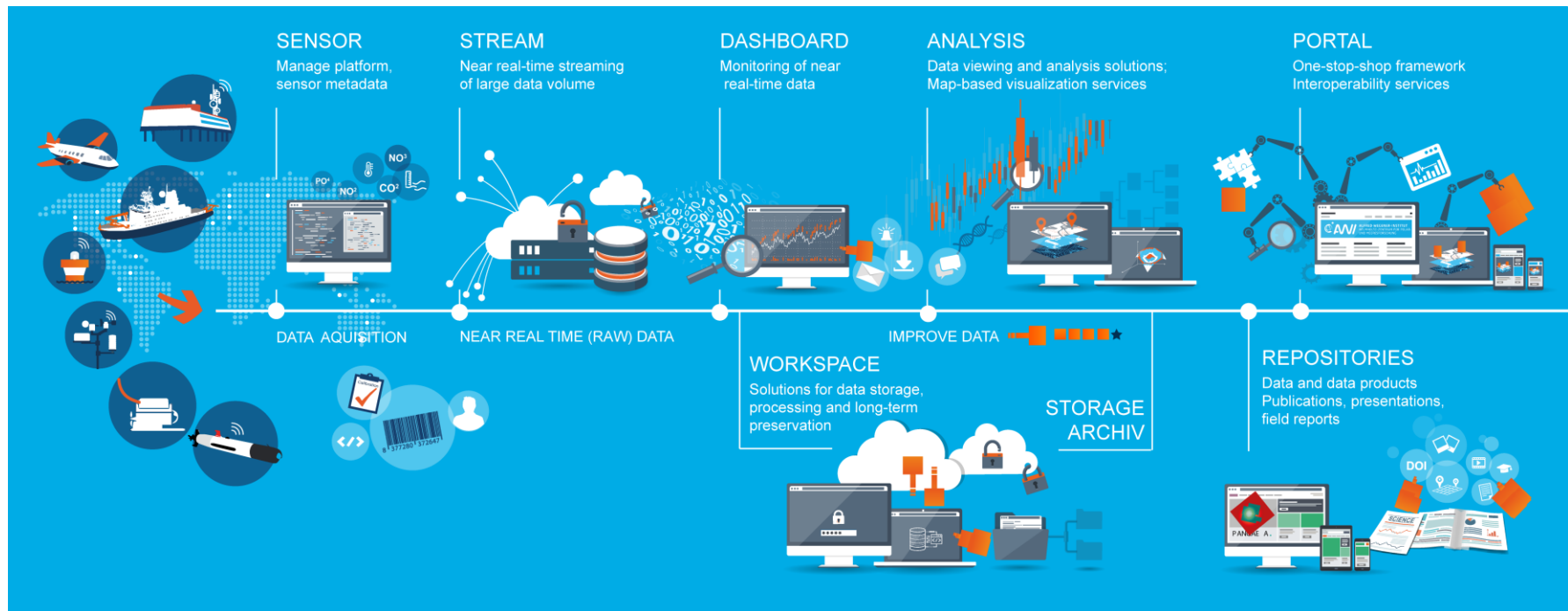




- Classification in the O2A concept
- What is Sensor Web?
- Structure of an Item
- Platform Types
- Collections
- Device URNs
- Reassignment
- Clone
- REST-API

Classification in the O2A concept



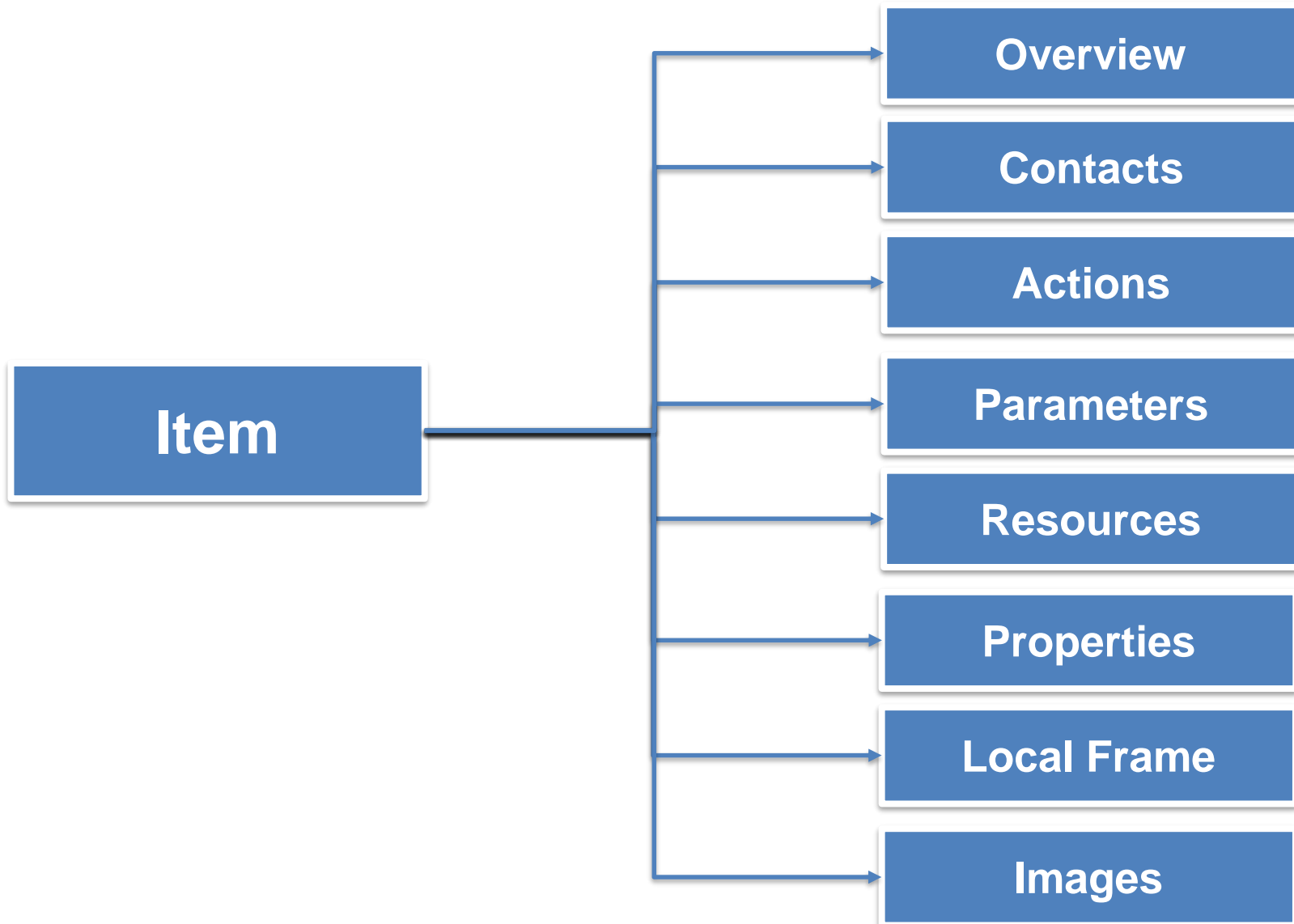
What is Sensor Web?



- Sensor Web manages metadata of
 - research platforms
 - sensors

- Sensor Web does not manage measurement data

Structure of an Item



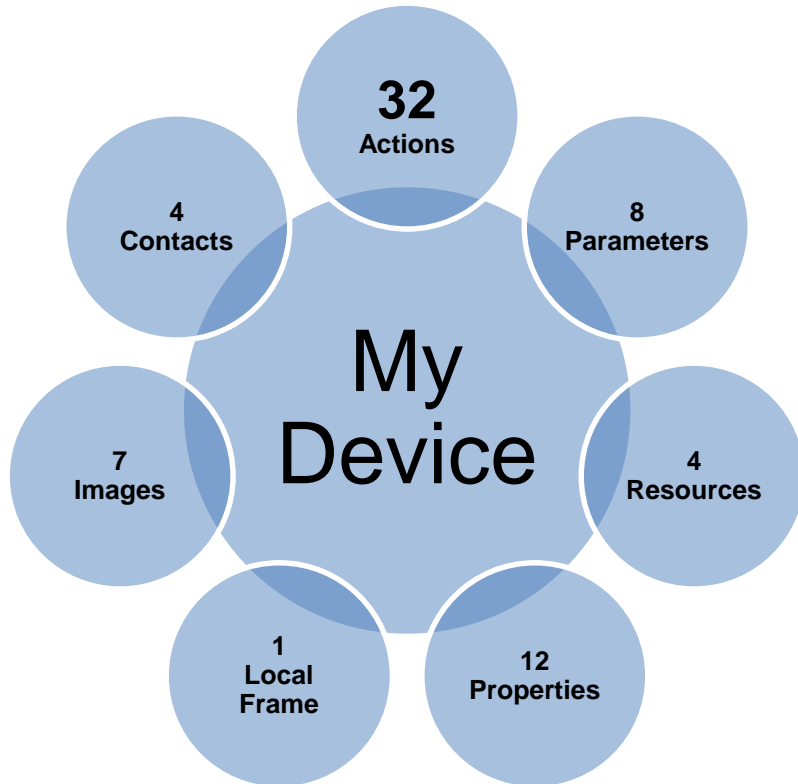
Structure of an Item (Contact Roles)



- Data Provider
- Data Scientist
- Engineer in Charge
- Principal Investigator

- Special function of roles:
 - Editor (can edit items)
 - Owner (special contact of the institute)
 - dship connector

Versioning



Versioning



SENSOR (2004). Platform metadata for Vessel Polarstern.
Configuration from 2004-06-03 02:00:00.
Alfred Wegener Institute for Polar and Marine Research.
<https://hdl.handle.net/10013/sensor.7bdbc478-a4c9-4eb9-917d-9a89ee098774>

Item versions can be used
for referencing in publications

Structure of an Item (Action Types)



- Calibration (create version)
- Comissioned (create version)
- Configuration
- Decomissioned
- Deployment (create version)
- Information
- Maintenance
- Mission
- Mount (create version)
- Partial failure
- Recovery
- Total failure

Platform Types



- Aircraft
- Buoy
- Laboratory
- Mooring
- Pack Ice
- Satellite
- Small Boat
- Station
- Towed System
- Vehicle
- Vessel
- unassigned

Collections



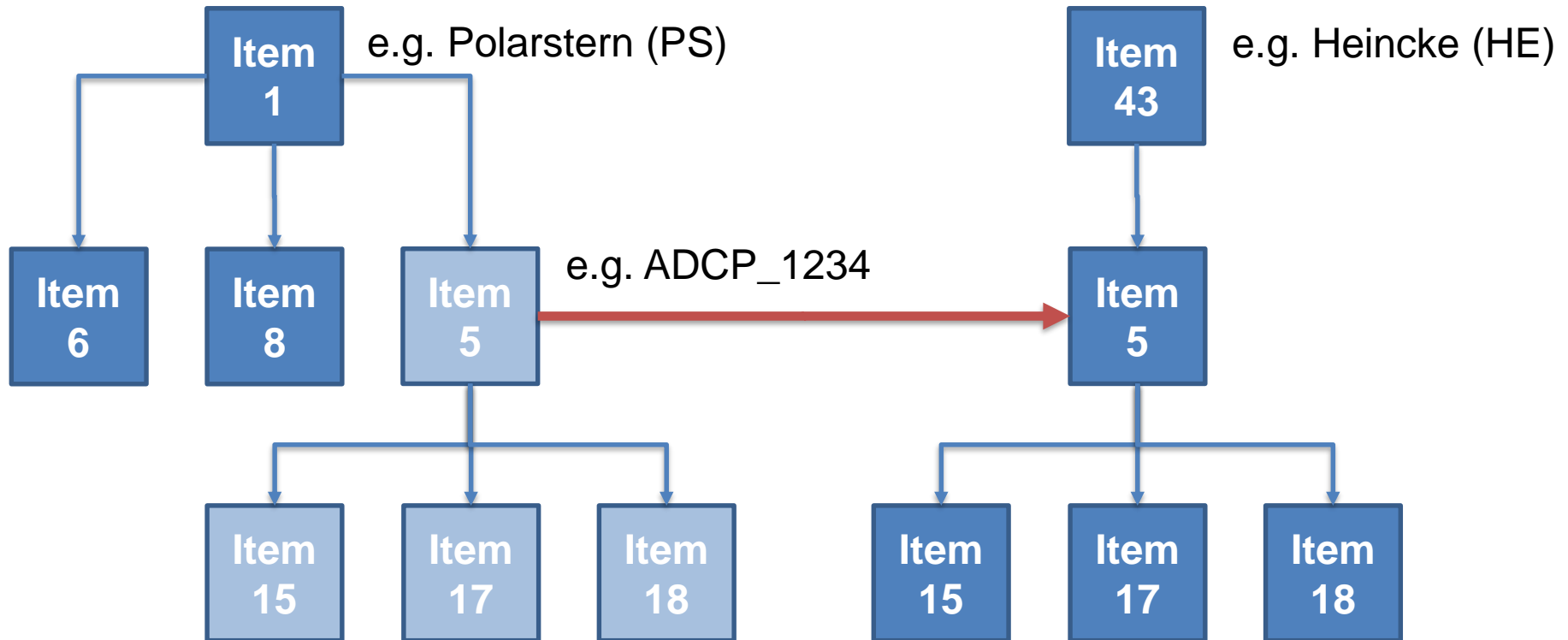
- MOSAiC-Aircraft
- MOSAiC-ATMOS
- MOSAiC-BGC
- MOSAiC-ECO
- MOSAiC-ICE
- MOSAiC-Modelling
- MOSAiC-OCEAN
- MOSAiC-RemoteSensing

Device URNs



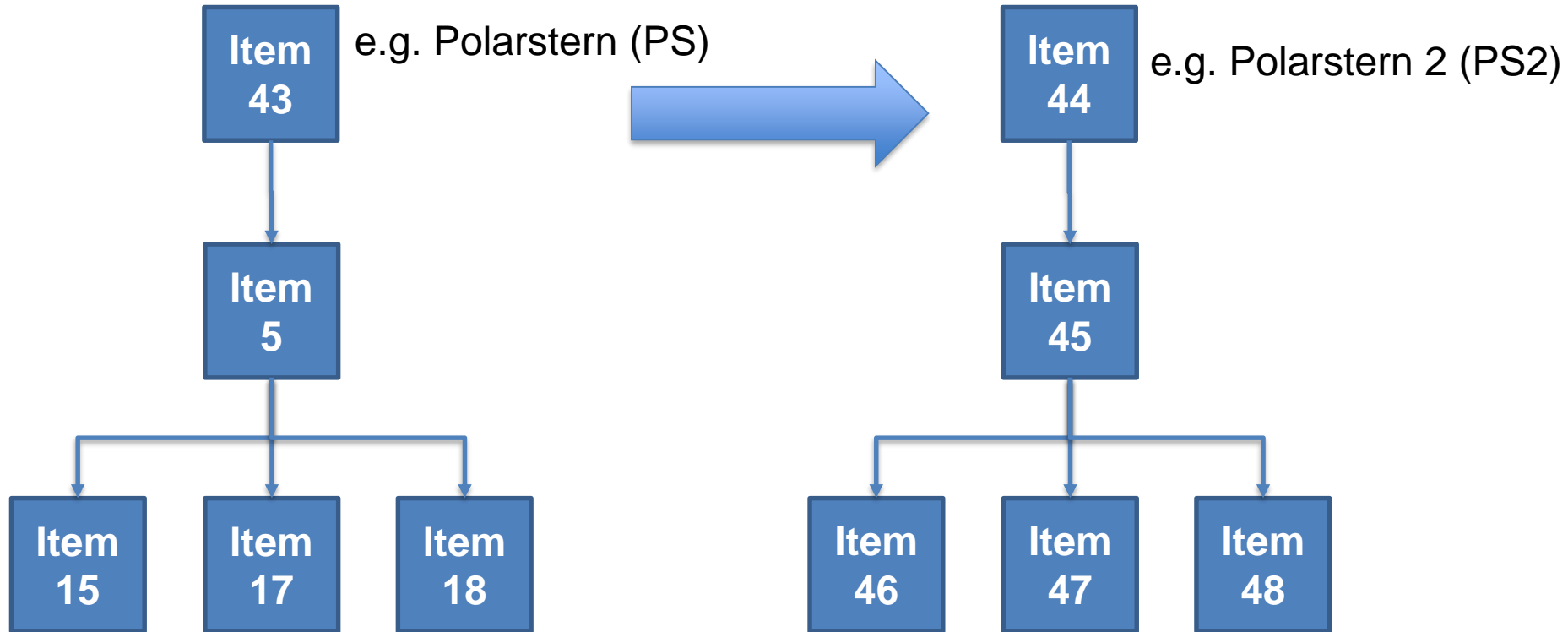
- URN (Uniform Resource Name)
 - Unique name of a item
 - Example: vessel:ps:adcp
 - Composed of short names
 - The path to your data is based on the URN
 - Example: .../vessel/ps/adcp
 - It is human readable in contrast to a numeric ID
- Short name
 - catchy abbreviations of your item name
 - Polarstern -> PS
 - Acoustic Doppler Current Profiler -> ADCP
 - can't be edited by a user, only admins can change the short name

Reassignment

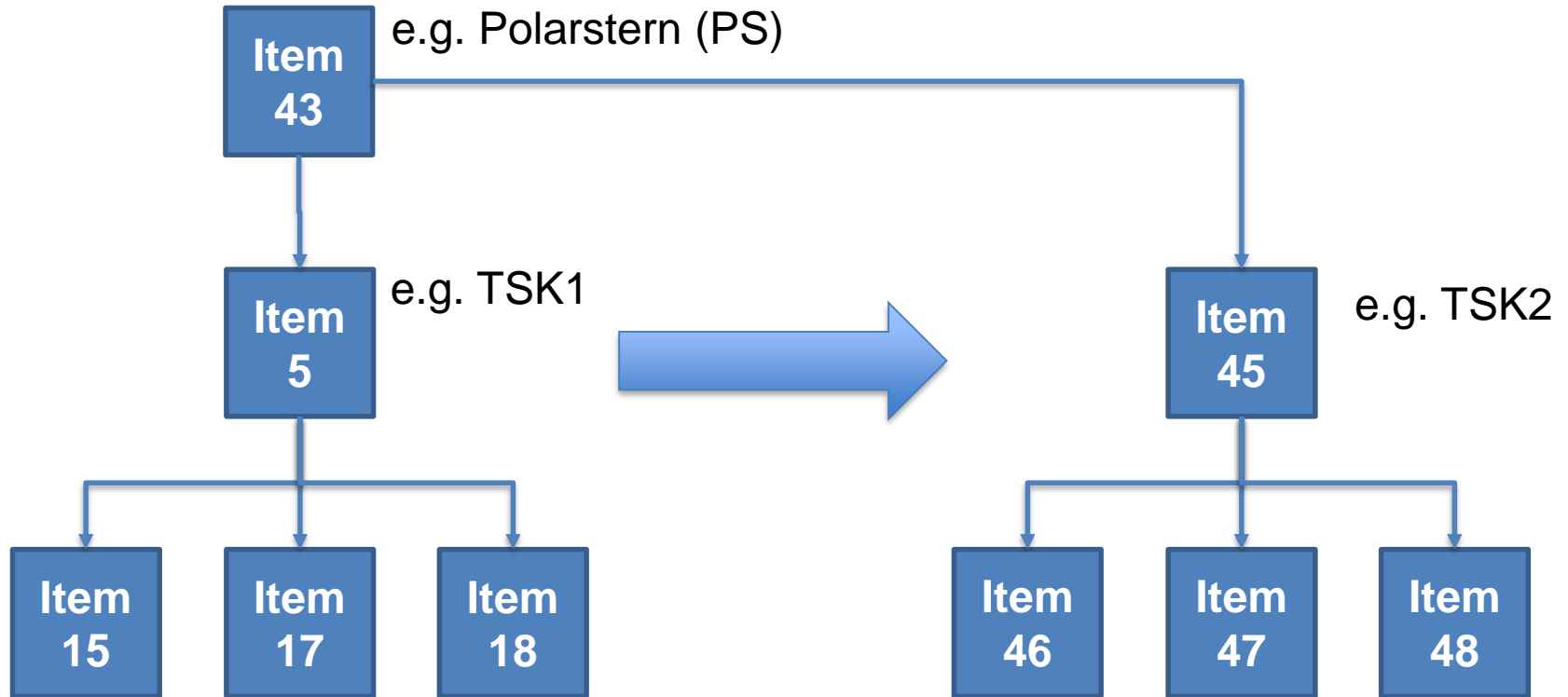


Device URN change from vessel:**ps**:adcp_1234 to vessel:**he**:adcp_1234

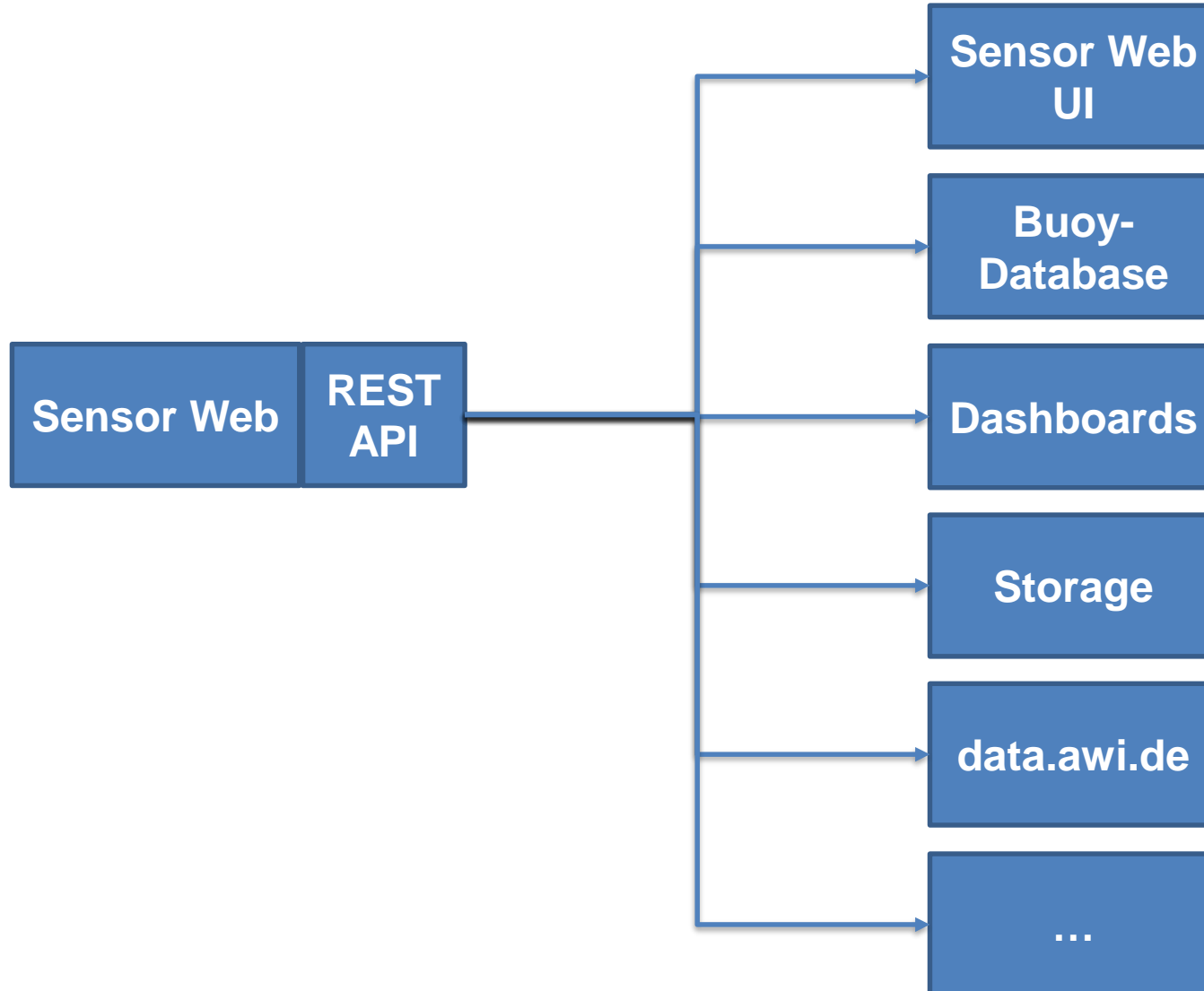
Clonen



Clonen



REST API



- *Live Presentation*
- See also: <https://sensor.awi.de/?site=tutorial>

**Thank you
for Listening**