

# Supporting Information for ”AMOC recovery in a multi-centennial scenario using a coupled atmosphere-ocean-ice sheet model”

L. Ackermann<sup>1</sup>, C. Danek<sup>1</sup>, P. Gierz<sup>1</sup>, and G. Lohmann<sup>1</sup>

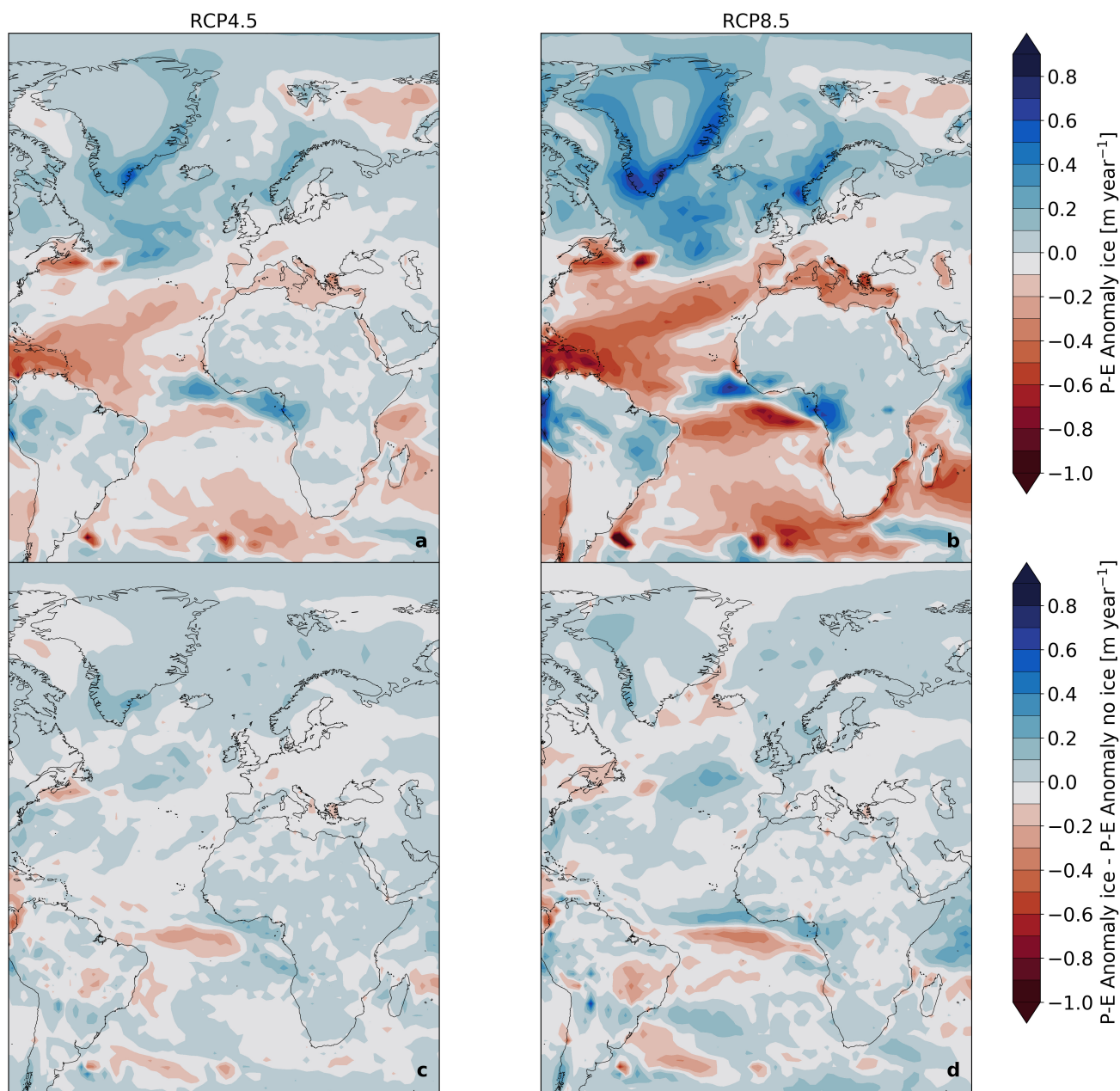
<sup>1</sup>Alfred-Wegener-Institut, Helmholtz-Zentrum für Polar- und Meeresforschung, Bremerhaven, Germany

## Contents of this file

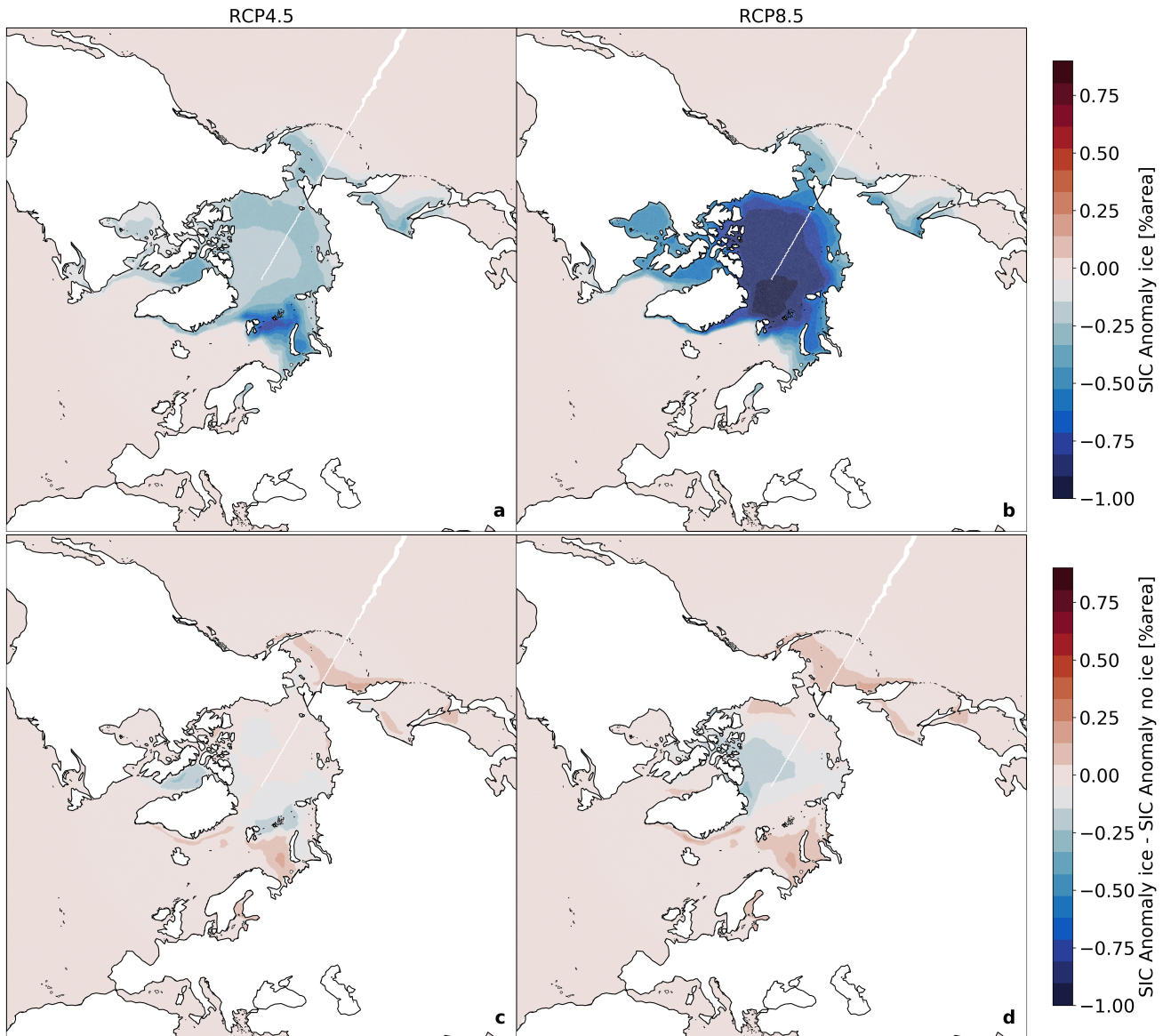
1. Figures S1 to S3

**Introduction** Supporting material for the model results from future scenario runs with AWI-ESM-1.1-LR and AWI-ESM-1.2-LR

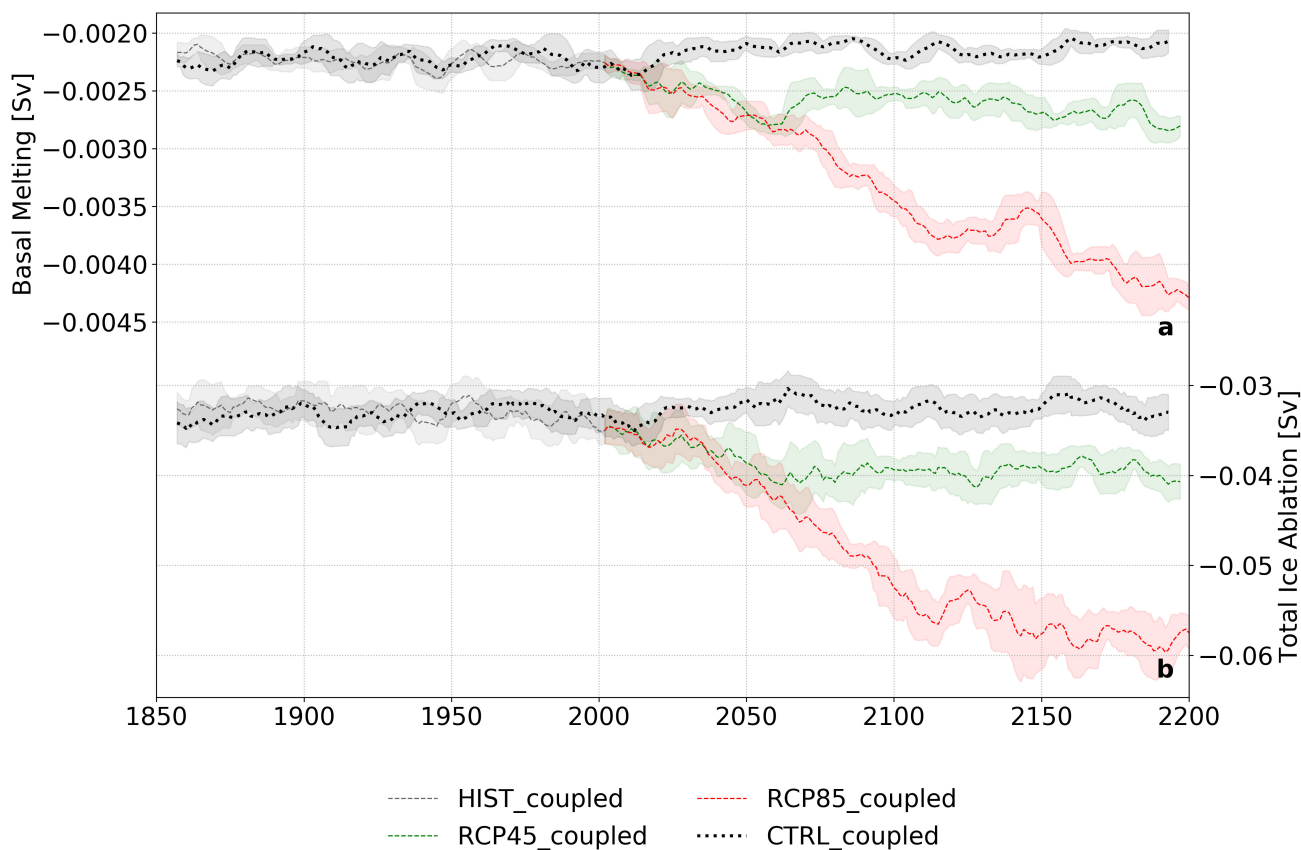
---



**Figure S1.** Anomalies in precipitation minus evaporation for 2170-2199 for a-b) the coupled model results minus the control state, c-d) the coupled model results minus the uncoupled results.



**Figure S2.** Anomalies in sea ice concentration for 2170-2199 for a-b) the coupled model results minus the control state, c-d) the coupled model results minus the uncoupled results. The values indicate the relative change in area covered by sea ice.



**Figure S3.** Timeseries of 11-year mean for a) basal melting, b) total ablation as sum of runoff and discharge for the Greenland Ice Sheet for the different scenarios run with the coupled model.