

Long-term Arctic peatland dynamics, vegetation and climate history of the Pur-Taz region, Western Siberia

DOROTHY PETEET, ANDREI ANDREEV, WILLIAM BARDEEN AND FRANCESCA MISTRETTA

BOREAS



Peteet, D., Andreev, A., Bardeen, W. & Mistretta, F. 1998 (June): Long-term Arctic peatland dynamics, vegetation and climate history of the Pur-Taz region, Western Siberia. *Boreas*, Vol. 27, pp. 115–126. Oslo. ISSN 0300-9483.

Stratigraphic analyses of peat composition, LOI, pollen, spores, macrofossils, charcoal and AMS ages are used to reconstruct the peatland, vegetation and climatic dynamics in the Pur-Taz region of western Siberia over 5000 years (9300–4500 BP). Section stratigraphy shows many changes from shallow lake sediment to different combinations of forested or open sedge, moss, and *Equisetum* fen and peatland environments. Macrofossil and pollen data indicate that *Larix sibirica* and *Betula pubescens* trees were the first to arrive, followed by *Picea obovata*. The dominance of *Picea* macrofossils 6000–5000 BP in the Pur-Taz peatland along with regional *Picea* pollen maxima indicate warmer conditions and movement of the spruce treeline northward at this time. The decline of pollen and macrofossils from all of these tree species in uppermost peats suggests a change in the environment less favorable for their growth, perhaps cooler temperatures and/or less moisture. Of major significance is the evidence for old ages of the uppermost peats in this area of Siberia, suggesting a real lack of peat accumulation in recent millennia or recent oxidation of uppermost peat.

Dorothy Peteet, NASA/Goddard Institute for Space Studies, 2880 Broadway, New York, NY 10025, USA and Lamont Doherty Earth Observatory, Palisades, NY 10964, USA; Andrei Andreev, NASA/Goddard Institute for Space Studies, 2880 Broadway, New York, NY, USA and Institute of Geography RAS, Staromonetny 29, Moscow, 109017 Russia; William Bardeen and Francesca Mistretta, Lamont Doherty Earth Observatory, Palisades, New York 10964, USA; received 14th October 1997, accepted 4th May 1998.

Arctic and boreal peatlands are important components of climate change because they play a key role in the terrestrial/atmospheric carbon balance (Billings 1987). Peatlands are large sources and sinks of greenhouse gases, most notably carbon dioxide and methane (Billings 1987; Matthews & Fung 1987; Schlesinger 1990). The Arctic is highly sensitive to climate change (Chapin *et al.* 1980; Hansen *et al.* 1993) and may respond to greenhouse warming either with positive feedbacks (more trace gas production) or negative feedbacks (more carbon storage) due to complex interactions involving permafrost limits, fire, nutrient mineralization rates, and water-table changes. Whether or not the Arctic tundra is presently acting as a carbon source or sink is controversial (Oechel *et al.* 1993; Keeling *et al.* 1996).

The northern peatlands of Russia comprise one of the largest carbon resources on earth (Gorham 1991). Botch *et al.* (1994) estimate the long-term (apparent) rate of carbon accumulation as 52 Tg C/yr. We investigate the local and regional vegetational history of the Pur-Taz region, western Siberia, in order to understand past, current and future peatland dynamics within a particular regional paleoclimatic setting.

Of particular interest is the balance of carbon accumulation versus decay in northern continental peatlands today. Little is known of the long-term (millennial) history of permafrost peatland accumulation/decay rates in the acrotelm (predominantly oxic surface layer) and the catotelm (anoxic lower layer) because of the difficulty in dating acrotelm peat and the lack of high-resolution ¹⁴C dating of peat profiles.

While dynamic peat models (Olsen 1963; Clymo 1984, 1991) postulate a decrease in rate of accumulation resulting in a limit to peat-bog growth, several recent studies have failed to show a decrease in rate of accumulation over millennia (Charman *et al.* 1994; Belyea & Warner 1996; Kuhry & Vitt 1996). Thus it is important to establish the rates of peat accumulation over millennia, and to determine the age of upper surface peats.

The northern part of Pur-Taz interfluvial region (Fig. 1) was chosen for a study of the history of the vegetation because of its proximity to the northern limits of birch, larch and spruce trees (*Arealy derev'ev i kustarnikov* SSSR 1977). Examination of the peat, pollen, macrofossil, charcoal, and loss-on-ignition history of a peat section from the Molodoto Lakes region, between the Pur and Taz Rivers, provides a long-term view of vegetation dynamics, peatland change, fire, and climate history at the Arctic treeline.

Setting

The site is located at 66°42' N, 79°44' E, to the east of the Ob River and to the west of the Yenisey River (Fig. 1), an area of low elevation peatlands that span many kilometers between the Pur and Taz Rivers. Depth to permafrost in the summer is about 30 cm today, suggesting that the frozen lower peat is not available for carbon exchange. Numerous thermokarst lakes occur in this region, and many of them are connected by small streams. Most of the lakes are shallow, probably because of the relatively brief sea-

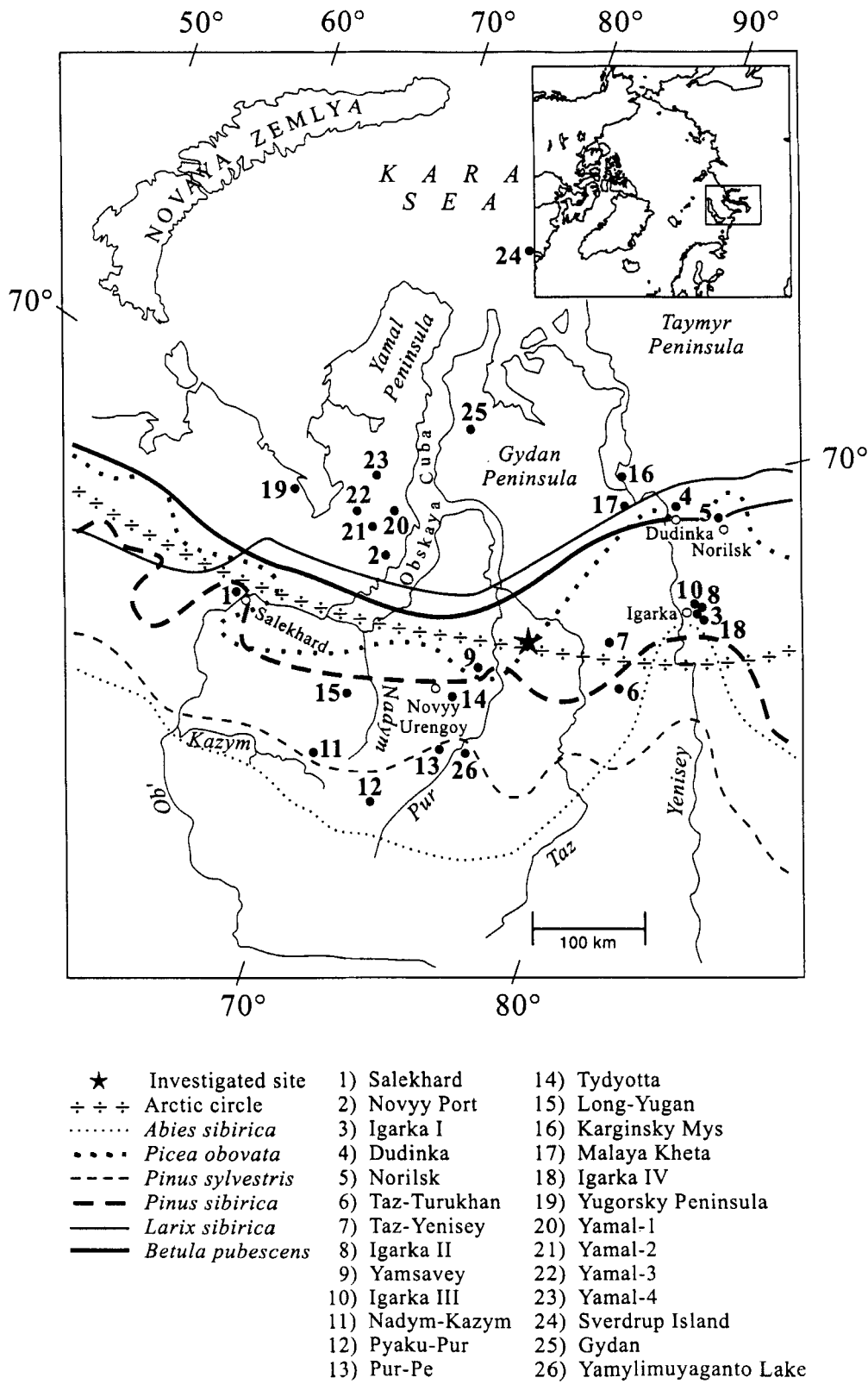


Fig. 1. Study region of western Siberia including the investigated site (this paper), previous palaeostudy sites, and modern treeline limits.

Table 1. AMS Radiocarbon dates and macrofossils dated from the investigated site.

Lab No.	Depth (cm)	Sample type	Age
CAMS-24132	25–30	<i>Betula nana</i> twig	4570 ± 60
CAMS-24133	85–90	<i>Betula nana</i> twig	4920 ± 60
CAMS-24134	168–173	<i>Betula</i> twig	6830 ± 60
CAMS-2427	263–268	<i>Betula</i> sect. <i>Albae</i> bark & wood	8370 ± 60
CAMS-2428	339–344	<i>Betula</i> and <i>Larix</i> twigs	9200 ± 60

sonal span available for thermokarst melting and possible infilling by reworked peat. Banks of peat were exposed along the shore of a large lake, which is continuing to expand by thermokarst processes. Our studied section was taken from one of the frozen exposures along the lake.

The region is designated as a forest-tundra zone underlain by continuous permafrost. *Larix sibirica* is the dominant tree, with rare *Picea obovata* forming an open parkland forest in the southern part of the region. *Betula nana*, *Alnus fruticosa* and *Salix* spp. are the most abundant shrubs today.

On the modern peatland surface *Ledum palustre*, *Carex*, *Polytrichum* and *Cladonia* dominate along with *Vaccinium uliginosum* and *Rubus chamaemorus*. In drier areas, lichens predominate.

Climate

Average July temperature is 13–14°C, and January mean temperatures range from –26 to –28°C, resulting in an annual temperature of –8 to –9°C. The frost-free period is about 75 days, from mid-June until 21–30 August (*Klimaticheskiiy atlas SSSR* 1960). However, annual precipitation is about 450–500 mm (100 mm during the winter), which makes it a relatively humid climate, resulting in a thick snow cover (about 70–80 cm) which prevents more severe permafrost (Shevelyova & Khomichevskaya 1967).

Geomorphology and glacial history

Two competing hypotheses exist concerning the geomorphic development in this part of Siberia. One suggests that the northern part of the West Siberian plain has not been glaciated for the last 40–50 000 years (Danilov 1987; Faustova & Velichko 1992; Astakhov 1998). Based upon investigations of lithology and geomorphology, Danilov (1987) suggests that widely distributed stones were transported into this region by sea ice during the Karga transgression of the Kara Sea 50 000–30 000 BP. Their petrology indicates that to the east of the Taz River, the stones originated from the Putoran Mountains and the Taymyr Peninsula. West of the Ob, the stones originated from the Ural Mountains. During the LGM (last glacial maximum) the Kara Sea shelf would have been free from ice and well-drained (Faustova & Velichko 1992). Supporting evidence for

this view is given by Michel (1998) based on $\delta^{18}\text{O}$ of ground ice in the region, and on scanning electron microscopy of Pleistocene sands (Mahaney 1998).

In an alternative viewpoint, Grossvald (1980, 1998) and Arkhipov & Volkova (1994) and Arkhipov (1998) believe that this area was covered by an ice sheet during the last glacial, which had its center in the Kara Sea area. This ice sheet would have resulted in blockage of the Ob and Yenisey Rivers, forming sand, silt, and clay lake sediments in this area.

Field and laboratory methods

The thickest peat exposures measured were up to 3.44 m, and one section was selected for detailed sampling. A monolith was collected, first by cleaning with a shovel to expose frozen peat, then by cutting 100 cc blocks of contiguous samples at 3–5 cm and transferring them to sample bags. The samples were later refrigerated. A total of 70 samples was collected for analysis of LOI, peat composition, pollen and spores, plant macrofossils and AMS radiocarbon dating. LOI was measured following procedures outlined in Dean (1974). Pollen and spores were concentrated from 1 cm³ sediment subsamples. Processing included KOH deflocculation, HCl and heavy liquid separation (Berglund & Ralska-Jasiewiczowa 1986) followed by acetolysis and mounting in glycerin. A minimum of 300 pollen grains was counted; spores were tallied in addition. Determination of relative frequency of pollen was calculated based upon the total pollen sum, and percentage of spores was based upon a sum of pollen and spores. *Betula* pollen was identified according to criteria developed for Eurasian birches by N. Filina (1976, 1978). The pore cavity of *B. sect. Nanae* is very small and the ektexine is thin. In contrast, the pore cavity of *B. sect. Albae* is larger and the ektexine thicker. The pollen grains of *B. sect. Fruticosa* are between the two types and are not easy to establish with certainty.

Macrofossils were separated from their organic matrix by soaking 50 cm³ of peat overnight in 5% KOH, then washing with water through 0.5- and 0.25 mm-mesh screens. The constituent needles, leaves, seeds, other plant parts and charcoal were stored in water and refrigerated. Macrofossil composition is shown per 50 cm³ of sample. Nomenclature for vascular plants follows Czerepanov (1995). Hand-picked, identified terrestrial macrofossils were selected for AMS ¹⁴C dating (Table 1). All dates discussed are in the radiocarbon time-scale.

Results

Peat composition, % LOI and peat accumulation

The section lithology (Fig. 2) indicates that underlying clay sediments are overlain by a sequence of sedge stem matrices and *Carex* seeds up to 320 cm with overlying moss (*cf. Calliergon*) – sedge mixtures up to about 215 cm depth. Sediments from 215 to 140 cm are predominantly sedge – *Equisetum*, wood-*Equisetum-Sphagnum*, *Sphagnum*, and wood-sedge-*Sphagnum* peat layers. A more decomposed, sandy wood-*Equisetum-Sphagnum* zone is present between 140 and 70 cm, also distinctive due the presence of black round fungal sclerotia. The upper 70 cm exhibits a return to woody *Sphagnum* peat, with *Sphagnum* present up to about 10 cm, above which the surface moss *Polytrichum cf. commune* dominates.

The LOI curve (Fig. 2) shows that the transition from clay to sedge peat at 340 cm is abrupt. The peat

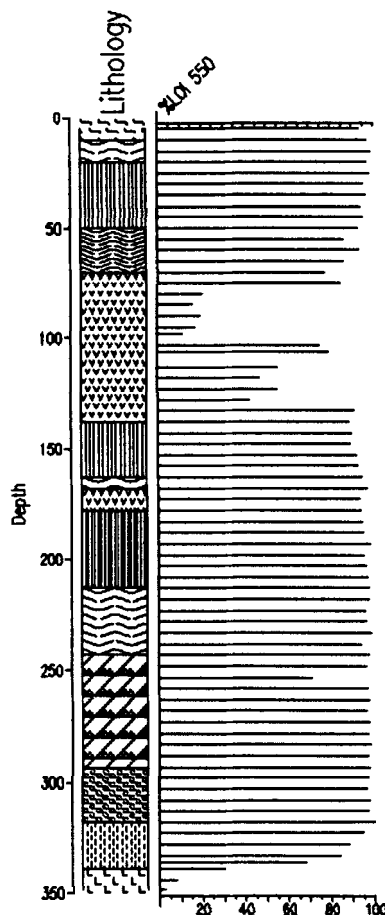


Fig. 2. Peat composition and % loss-on-ignition (LOI) at 550°C.

stratigraphy shows very high organic matter up to about 130 cm, where sand mixed with the peat lowers the % LOI. A return to high organic matter at 75 cm depth continues to the top of the section.

The sediment accumulation curve (Fig. 3) shows a rather gradual accumulation curve from 9200 BP to 4900 BP (0.8–0.4 mm yr⁻¹), and a higher rate from 4900 years to 4570 BP (1.7 mm/yr). From 25 cm to the surface, it is clear that accumulation dropped sharply (0.05 mm yr⁻¹).

Plant macrofossils

PT-I (9200–8700 BP, 344–315 cm). The base of the section (Fig. 4) is AMS-dated to 9200 ± 60 BP (Table 1) and the presence of clay, *Nuphar luteum* seeds, *Hippuris* seeds, *Potamogeton* seeds and bryozoan strobilata indicate a shallow lake environment. Diatoms from the bottom clay layer reveal a mixture of fresh-water and poorly preserved marine taxa, the majority being fresh-water (L. Burckle, pers. comm.). It is not possible to determine whether the marine diatoms are of eolian origin or *in situ*; their presence is inconclusive in supporting the suggestion of a Kargian age (35 000–26 000 BP) Kara Sea transgression in the region (Danilov 1987). The basal charcoal may indicate a local pyric origin for the formation of the lake, as fire today plays a significant role in lake formation in permafrost regions (Zoltai 1993). *Larix sibirica* needles, seeds and a cone scale, along with *Betula pubescens* seeds and bracts are present.

PT-IIa (8700–8000 BP, 315–250 cm). The peat stratigraphy is a mixture of moss (*cf. Calliergon*) and sedges and reveals a complete lack of aquatic macrofossils. *Oxycoccus microcarpus* leaves, fruits, and seeds, *Vaccinium uliginosum* and *Andromeda polifolia* seeds and *Betula nana* seeds and bracts are present. *Larix* needles and seeds are dominant, along with *Betula pubescens* seeds and bracts, strikingly well-preserved *Betula sp.* (*cf. B. fruticosa* – a possible hybrid between *Betula pubescens* and *Betula nana*) bracts.

PT-IIb (8000–7300 BP, 255–195 cm) reveals a wetter environment, with the dominance of *Sphagnum*, and seeds of *Carex*, *Comarum palustre*, *Calla palustris*, and *Menyanthes trifoliata*. Polypodiaceae pinnae are present. *Larix* needles and seeds, *Betula pubescens* seeds and bracts occur throughout this zone. *Picea obovata* needles and sterigmata first appear.

PT-III (7300–6900 BP, 195–175 cm). *Larix* needles are greatly diminished in this zone and there are also fewer *Betula pubescens* macrofossils. In contrast, two

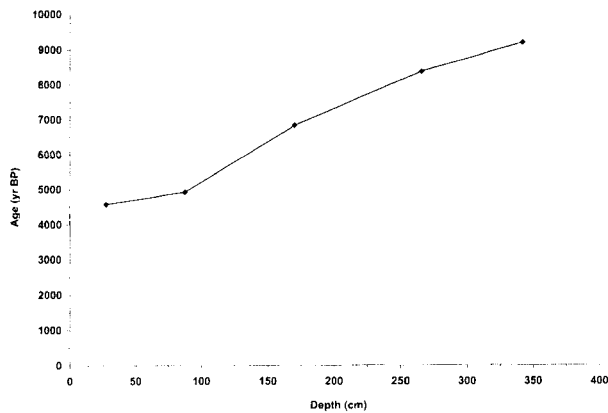


Fig. 3. Age-depth curve for the site using linear interpolation between AMS ^{14}C -dated levels. We give all dates in uncalibrated ^{14}C ages for ease in comparison with other studies.

distinctive types of *Carex* seeds (trigonous and lenticular) are present, along with seeds of *Comarum palustre*, *Lysimachia thyrsiflora*, *Menyanthes trifoliata*, *Hippuris*, *Potamogeton* and *Daphnia epiphia*.

PT-IV (6900–5200 BP, 175–100 cm). *Picea* needles dominate this zone, while *Betula* seeds and bracts are noticeably scarce. *Larix* needles are present until about 160 cm depth, approximately 6600 BP, when they disappear in the macrofossil record. Both types of *Carex* seeds are present, along with *Rubus cf. arcticus* and *Rubus cf. saxatilis* seeds, a Caryophyllaceae seed, and several *Menyanthes* seeds. Noticeable in this zone are fungal sclerotia, charcoal, and well-decomposed wood fragments.

PT-V (5200–4700 BP, 100–50 cm). The absence of *Picea* needles and very few *Betula pubescens* seeds are notable in this zone, which is dominated by lenticular *Carex* seeds, some trigonous *Carex* seeds, *Comarum palustris* seeds, *Viola* seeds, and at the top of the zone, *Menyanthes* seeds. *Equisetum* peat dominates from 80 to 50 cm.

PT-VI (4700–4300 BP, 50–10 cm). This zone is characterized by a few *Carex* seeds of both types, a few wingless *Betula* seeds, the appearance of *Andromeda* seeds, and many *Chamaedaphne calyculata* seeds.

PT-VII (4300 to modern, 10–0 cm). The top zone is modern, and contains no recognizable macrofossils other than moss (*cf. Polytrichum*), a charred leaf, and moss capsules.

Pollen zones

Pollen zone 1 Larix-Betula (9200–9150 BP, 344–337 cm). This zone (Fig. 5) is notable for its large amounts of *Larix* pollen (about 20%) and high percentages of both *Betula* sect. *Albae* and *Betula* sect. *Nanae*.

Pollen zone 2 Larix-Betula-Picea-Sphagnum (9150–8500 BP, 337–280 cm). This zone displays the first appearance of *Picea* pollen, large amounts of *Betula* pollen, and maximal amounts of *Sphagnum* spores. Minor occurrences of *Pinus* are attributed to long-distance transport. Peaks in Cyperaceae and Polypodiaceae also occur.

Pollen zone 3 Picea-Betula-Larix (8500–7500 BP, 280–210 cm). A sustained increase in *Picea* pollen coincides with a decline in *Larix* pollen, though *Larix* maintains its presence throughout the zone. A decline in *Betula* sect. *Albae* pollen is paralleled by increases in *Betula* sect. *Nanae* and Cyperaceae pollen, while *Sphagnum* spores are low throughout most of the mid-zone. The upper portion of the zone shows an increase in *Sphagnum* spores.

Pollen zone 4 Picea-Betula (7500–6100 BP, 210–135 cm). This zone is dominated again by *Betula* sect. *Albae* pollen, with lower amounts of *Larix* and *Betula* sect. *Nanae*, and fluctuating percentages of *Picea* and Cyperaceae pollen. Poaceae pollen increases, and *Equisetum*, Polypodiaceae and *Sphagnum* spores fluctuate.

Pollen zone 5 Picea-Betula-Ranunculaceae-Equisetum (6100–4700 BP, 135–50 cm). There is a drop in *Larix* and *Picea* pollen in this zone, but *Abies sibirica* pollen makes its first appearance. *Betula* sect. *Albae* is still dominant, and less *Betula* sect. *Nanae* is present. Distinctive to this zone is the presence of Ranunculaceae pollen, along with major increases in Polypodiaceae at the base of the zone, followed by a drop in Polypodiaceae and major dominance of *Equisetum* spores.

Pollen zone 6 Betula-Picea-Ericales-Sphagnum (4700 BP to modern, 50–0 cm). This zone records maximum values of *Abies* pollen, sustained values of *Picea* and *Betula* sect. *Albae* pollen, maximum values of Cyperaceae and Ericales pollen, a marked drop in *Equisetum* spores, and large increases in *Sphagnum* spores.

Discussion

Peatland and vegetational history

The discussion of peatland types through time follows a progression of hydrological changes, associated with changes in nutrient content, pH, aeration and degree of canopy cover. When viewed in a regional context through comparison with other sites (with bulk ^{14}C dates), patterns of regional climatic change are also revealed within the local peatland stratigraphy.

Shallow lake (9250–9200 BP). – At 9250 BP, the lake was largely surrounded by *Larix sibirica* and *Betula pubescens* trees, with some shrubby *Betula nana*. *Larix*

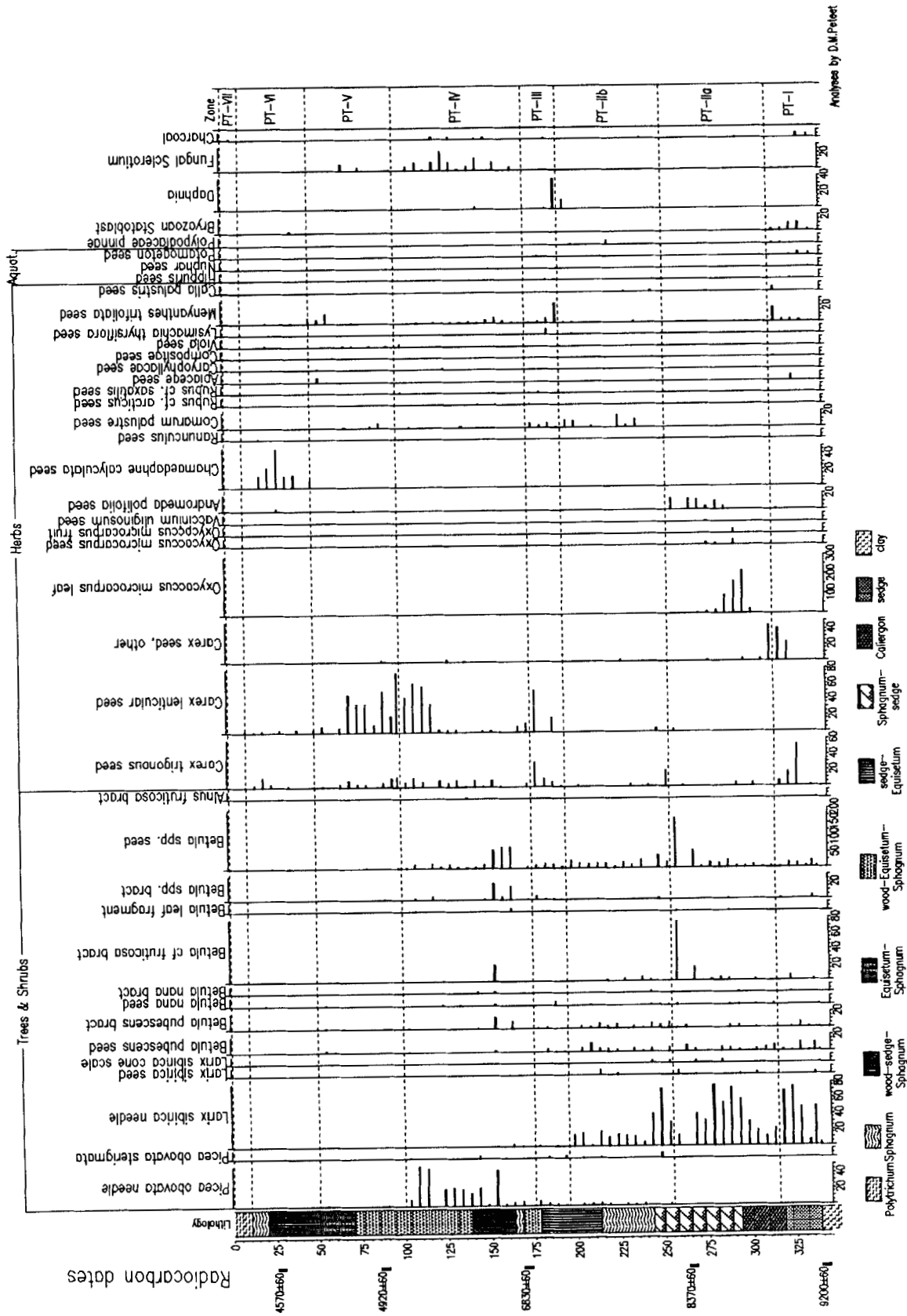


Fig. 4. Macrofossil stratigraphy, Pur-Taz Section, western Siberia. Concentrations are numbers per 50 cm³ per sample. Key for lithological units is shown in Fig. 5.

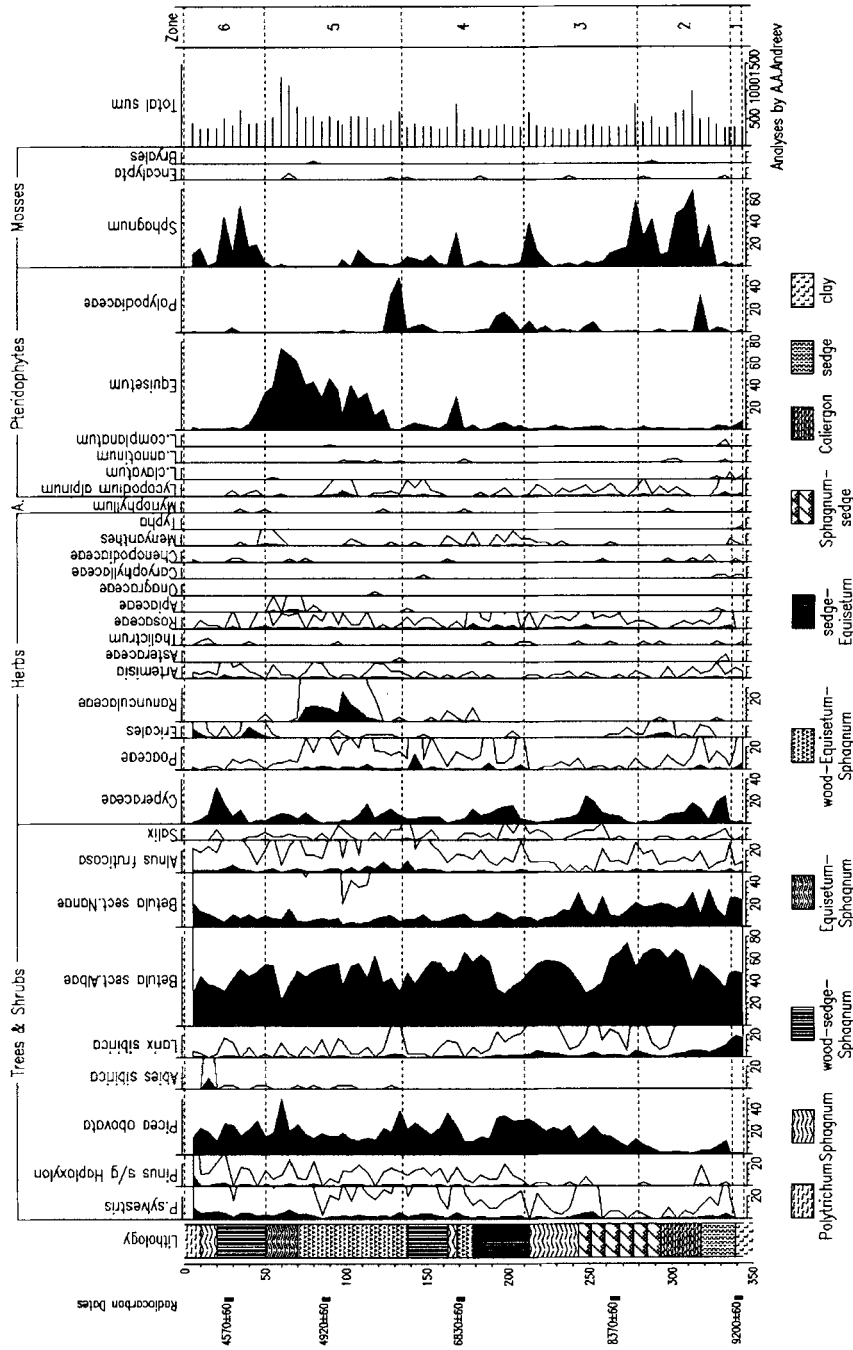


Fig. 5. Pollen and spore stratigraphy, Pur-Taz Section, western Siberia.

may have been present in the region as early as 15 000 BP, according to one date from wood on the Gydan Peninsula (site 25) of $15\,000 \pm 250$ BP. Other larch dates from the Gydan are $10\,000 \pm 70$ BP, LU-1153; 9730 ± 100 BP, MGU-763 (Ukrainitseva 1982) and $10\,500 \pm 500$ BP, IM-671, (Belorusova et al. 1987) from the Taymyr Peninsula.

Although *Larix* is an important forest species in this region today, its history is not well known because of its poor representation in pollen diagrams. Rare even in surface samples from larch forests throughout Siberia (Vas'kovsky 1957; Popova 1961; Giterman 1963; Savvinova 1975; Andreev & Klimanov 1989), *Larix* low pollen frequency does not reflect its true abundance in a forest. Thus, even scant larch pollen in pollen records are interpreted as reflecting widespread *Larix* distribution.

The initial presence of *Larix* and *Betula pubescens* in the region, and even as far north as the Gydan and Taymyr Peninsulas, indicates that summers in the late-glacial and early Holocene were warm enough to support trees. The presence of lower sea level resulting in exposure of Arctic shelves and the existence of a continuously frozen Arctic Ocean until the early Holocene contributed to a more continental climate. Warmer summers and colder winters due to Milankovitch forcing (Berger 1978) would have also favored *Larix* growth. Modern distribution of larch extends to northeastern Yakutia with winter lows as cold as -60°C today (Karavaev & Skryabin 1971). The large numbers of Siberian rivers which empty into the Arctic Ocean would have facilitated migration northward, because the open, warmer, well-drained river sands and silts would have favored seed germination and establishment.

Several locations in the region demonstrate widespread early Holocene peat initiation at this time. For example, near Igarka (Fig. 1, site 10), the bottom of a peat section was dated at 9480 ± 120 BP (Levkovskaya et al. 1970). The basal age of a peat section from the Nadym-Kazym Rivers watershed (site 11) was dated to 9000 ± 50 BP, IGAN-387 (Khotinsky & Klimanov 1985). A number of peat cores were investigated using pollen, macrofossil and radiocarbon analyses on the Pyaku-Pur, Pur-Pe, and Tydyotta River valleys (the western tributaries of the Pur River) and Long-Yugan River valley, the western tributary of the Nadym River (sites 12–15). The oldest radiocarbon date is 9320 ± 120 BP, LU-934 (Malyasova et al. 1991).

To the north, ^{14}C dates from the Yamal Peninsula (sites 20–23) of $10\,700 \pm 140$ BP, LU-1042; 9600 ± 160 BP, LG-30; 9300 ± 100 BP, GIN-2442; 9230 ± 50 BP, GIN-2479, published by Vasil'chuk et al. (1983) and from Sverdrup Island, Kara Sea (site 24), of $11\,640 \pm 40$ BP, GIN-7625, $10\,490 \pm 380$ BP, GIN-7626, and 9770 ± 280 BP, GIN-7627 (Andreev et al.

1997) suggest that peat accumulation was locally initiated as early as the late-glacial.

Forested, wet sedge fen (9200–8700 BP). – A wet sedge fen characterized the area, as evidenced by the change from floating aquatics (*Nuphar*) to emergents (*Hippuris*), the sedge matrix with *Carex* achenes, and the appearance of *Calla palustris* and *Menyanthes trifoliata*. *Larix* pollen percentages drop with increasing percentages of Cyperaceae, but abundant larch macrofossils indicate its dominance at the site until about 7300 BP. *Betula cf. fruticosa* makes its first appearance.

The initial increase of *Picea* pollen is indicative of the movement of *Picea* into the region. The increase in *Picea* pollen about 9150 BP suggests that *Picea* reached the region at this time, and other nearby studies support this view. In particular, studies from a peat section near Igarka (site 10) (Levkovskaya et al. 1970) contain abundant *Picea* pollen, which appears to correlate with undated peat sections sampled by Katz & Katz (1947, 1958) near Novyy Port, Salekhard, Norilsk, Dudinka, Igarka and in the Taz-Turukhan Rivers watershed areas (sites 1–6). These data appear also to correlate with undated sections investigated by P'yavchenko (1971) in the Taz-Yenisey watershed (site 7) and near Igarka (site 8) and with samples from the Yamsavey River valley (site 9) (Levkovskaya 1966). The radiocarbon date from the Levkovskaya et al. (1970) section (site 10) suggests that spruce forest was well established by 9200 ± 40 BP. The pollen record from the Nadym-Kazym Rivers watershed (site 11) shows a peak of *Picea* pollen below a peat layer, dated to 8660 ± 50 BP, IGAN-389 (Khotinsky & Klimanov 1985).

Movement of *Picea obovata* into the region suggests increasing moisture and warmth, because today the limit of *Picea* is to the south of *Larix* and *Betula pubescens*. Regionally, there is an increase of spruce pollen between 9000 and 4500 BP. The oldest radiocarbon-dated spruce macrofossils (wood and cones) from a large area of West Siberia are dated to 8800–8400 BP (MacDonald et al. submitted).

Forested, Sphagnum-Calliergon and Sphagnum-sedge peatland (8700 to 8000 BP). – *Sphagnum* and *cf. Calliergon* moss are abundant in the lower part and in the upper part *Sphagnum-sedge* is dominant. Ericaceous species such as *Andromeda polifolia*, *Oxycoccus microcarpus* and *Vaccinium uliginosum* suggest that the peatland became raised above the water table. The pH probably dropped. *Larix* and *Betula pubescens* continued to dominate the forest, and *Betula cf. fruticosa* became extremely abundant around 8100 BP.

The first appearance of *Picea* macrofossils about 8000 BP suggests a warmer and perhaps moister climate overall compared with previous millennia and with today. The mid-Holocene *Picea* dominance is

also seen in pollen stratigraphy from peats along the tributaries of the Pur River and the Long-Yugan River (sites 12–15) (Malyasova *et al.* 1991). Around the mouth of the Mayala Kheta River (site 17) *Picea* pollen and macrofossils are also abundant in peat layers dated to 8500 ± 250 BP, GIN-26; 6800 ± 250 BP, GIN-25; and 4610 ± 250 , LE-382 (Alekseeva *et al.* 1965; Kind 1974). Near Igarka (site 18), *Picea* macrofossils were dated to 8210 ± 250 BP, KRYL-126 and 5180 ± 250 BP, KRYL-125 (Koshkarova 1986).

We note a peak in *Betula* sect. *Nanae* pollen between about 8300 and 8000 BP, which may correlate with the large increase in *Betula* cf. *fruticosa* macrofossils, slight coolings at about the same time at site 17 (Kind 1974), site 11 (Khotinsky & Klimanov 1985) and other locations in Northern Eurasia (Andreev & Klimanov 1989; Andreev *et al.* 1993, 1995; Klimanov & Levina 1989; Velichko *et al.* 1997). Alternatively, it may be a local occurrence. Whether or not these indications of cooling are precisely correlative needs future study.

Forested, wet Equisetum fen (8000–6900 BP). – A drop in peatland ericaceous species and an increase in *Comarum palustre*, *Calla palustris*, *Hippuris*, *Lysimachia thyrsiflora*, *Menyanthes trifoliata* and *Daphnia* headshields suggest shallow water and more flow of water and nutrients through the site, resulting in a fen. Large numbers of wingless *Betula* seeds reveal a higher level of oxidation, which contributed to seed degradation, thus supporting this interpretation. The decline in larch pollen and macrofossils around 7300 BP is paralleled by the slight rise in *Picea* macrofossils.

Forested, dry Equisetum-sedge fen (6900–6100 BP). – Spruce becomes dominant at the site, and many spruce woody remains are present along with spruce needles. *Equisetum* is very abundant, as is evident in both the spore and peat stratigraphy. Sedge, *Rubus* cf. *arcticus*, *Rubus* cf. *saxatilis* and *Menyanthes* are also present. The rising increase in fungal sclerotia and these *Rubus* species reflects the overall drier conditions, although the presence of *Menyanthes* suggests that small pools were also present. The appearance of a few charcoal pieces indicates that fire was a local environmental factor, in contrast to the lack of charcoal in earlier deposits.

Forested, Equisetum-sandy-sedge fen (6100–5200 BP). – The LOI curve shows a marked drop in organic matter, which is visible in the sediment as very sandy grains mixed with the *Equisetum*-sedge peat. The sand is well mixed throughout the peat and we interpret this phase as indicative of strong winter winds contributing sand from riverbanks or terraces. Alternatively, spring floods may have resulted in local transport of sand to the peatland. The presence of

Caryophyllaceae and *Viola* seeds suggests a drier environment locally.

Abies pollen appears for the first time, but it probably was south of our site. Its arrival correlates well with *Abies* pollen data from sites 12–15 to the southwest investigated by Malyasova *et al.* (1991). The appearance of *Abies sibirica* pollen along with increases in *Alnus fruticosa* pollen suggests enhanced mid-Holocene atmospheric moisture with warmth. *Abies* pollen maxima of 10% about 4500 BP may indicate that the northern limit of *Abies* was close to the site.

Quantitative reconstructions of temperature from regional pollen records (Khotinsky & Klimanov 1985) indicate that the warmest time in the area during the Holocene was 6000–5000 BP. This is approximately the same time as the dominance of *Picea* macrofossils at our site (Fig. 4) and sites 17, 18 (Fig. 1). *Picea* macrofossils are restricted to this interval at site 16, which indicates northward treeline movement. The decline in *Betula pubescens* macrofossils at our site at this time is probably local, because the pollen record indicates that *Betula* was still present regionally.

Pinus sylvestris and *Pinus sibirica*, which both have their northern limit to the south (Fig. 1) today, moved into the southern part of this region much later than *Picea* in the latter half of the Holocene and did not extend as far north as *Picea*. We did not find macrofossils of these trees in our section, but slight increases in pollen (windblown) about 8000–4500 BP suggest that they also were migrating northward with the increasing warmth. To the south at Yamylimyaganto Lake (site 26) in the Pur River valley near Urengoi where pine grows today (Subetto *et al.* 1995), the appearance of *Pinus sylvestris* about 2800 BP and its subsequent increase to 30% reveals slow migration northward throughout the Holocene.

Open, sedge-moss fen (5200–4300 BP). – A return to wet, more organic-rich fen conditions is evident from the high organic content in the top 70 cm of the core, the drop in woody fragments, the total disappearance of tree macrofossils, the abundance of *Chamaedaphne calyculata* seeds, the presence of *Menyanthes*, and an increase in *Sphagnum* spores.

Open, dry cf. Polytrichum-lichen community (4300 to modern). – Very dry conditions are evident from well-decomposed peat with no fragments other than cf. *Polytrichum* and charcoal. The striking lack of mosses and macrofossils and the presence of charcoal suggest that recent drought may have contributed to oxidation of the uppermost peat.

The age of 4570 ± 60 BP at 25–30 cm depth in our peat corresponds with the evidence of peat degradation or lack of accumulation regionally in recent millennia, possibly suggesting a drier climate or other conditions less favorable for peat accumulation. Peat

from a section near Igarka (site 10) was dated to 6030 ± 70 BP at 40 cm depth (Levkovskaya *et al.* 1970). A peat sample from Karaginsky Mys (site 16) shows an age of 2420 ± 150 BP, SOAN-55, at 20 cm depth (Levina & Nikitin 1973; Firsov *et al.* 1974). A date of 3800 ± 40 BP, IGAN-392, was also retrieved from peat at 20 cm depth at site 11. Near this site, a date of 4900 ± 50 BP, GIN-2292, from another palsa at a depth of 20–30 cm demonstrates another mid-Holocene age for near-surface peat (Khotinsky & Klimanov 1985). On the Yugorsky Peninsula a date of 4140 ± 70 BP, WAT-2995 was obtained from peat at 10–15 cm depth (Andreev *et al.* in press). A number of sites from the Gydan Peninsula also show old ages for surface peats: 6520 ± 60 BP, GIN-3624 at 20 cm depth; 3230 ± 60 BP, GIN-3620 at 20 cm depth; and 3760 ± 100 BP, GIN-3599 at 30 cm depth (Vasil'chuk, 1992).

It is also significant that similar old ages for surface peats are seen in the Canadian Arctic and Subarctic (Zoltai & Tarnocai 1975; Vardy *et al.* 1997), supporting the contention that arctic peatlands may be presently acting as more of a source of carbon to the atmosphere than a sink (Warner *et al.* 1993; Belyea & Warner 1996). The reason for the lack of accumulation in recent millennia in Canada has been attributed to climatic cooling (Terasmae 1972), and the mechanisms may involve feedbacks such as less growth due to decreased nutrient mineralization (Bridgham *et al.* 1995), elevated drier peats due to increased permafrost action (Zoltai & Tarnocai 1975), or increased oxidation due to increased winds. Evidence for neoglacial cooling in recent millennia is also found in subarctic coastal Alaskan peatlands (Heusser *et al.* 1985; Peteet 1986, 1991) and glacial records from the St. Elias Mountains, Alaska (Denton & Karlen 1973) as well as Ellesmere Island, Canada (Koerner & Fisher 1990).

Significance of peatland, arboreal and paleoclimate changes

1. This high-resolution, complex record of peatland changes demonstrates the high degree of variability in peatland growth over a span of over 5000 years in a permafrost environment. Because the area today is mapped as continuous permafrost in this part of western Siberia, we attribute many of the changes in peat type to be a result of local hydrological changes (thermokarst action, stream movement), or even beaver activity (Levina & Nikitin 1973) within a changing climate. However, the proximity of discontinuous permafrost to the south (Shpolyanskaya 1981) suggests that during the early Holocene discontinuous permafrost may have affected this region, resulting in palsas and collapse scars (Zoltai 1993). Further high-

resolution research on West Siberian peatlands should reveal whether the peatland stratigraphic patterns we found from 9300–4500 BP are repeated, and therefore represent regional rather than local conditions.

2. The migration of trees into this region is expressed at our site by the macrofossil pattern of *Larix sibirica* and *Betula pubescens* arrival, followed by *Picea obovata*. The decline of pollen from all of these trees in the uppermost peats, along with the modern absence of *Betula pubescens* and *Picea* growth locally, suggests a change in the environment less favorable for their growth; perhaps cooler temperatures and/or less moisture.

3. The role of fire appears to be a minor one in the history of this peatland, except possibly in the initiation of the early Holocene lake sediments. This minor pyric role contrasts with the fire history in Finnish peatlands, where more than half of the carbon loss in peatlands is attributed to fire (Tolonen *et al.* 1992). Charcoal is more abundant, though still scarce, in the wooded phase between 6500 and 5500 BP, which may reflect the greater local influence of fire in a better-drained forest environment in contrast to the previously moister environments. However, the top of the peat section also contains a charred leaf, suggesting recent fire with the drier, more decomposed peat and some *cf. Polytrichum* remains. This surface charcoal could reflect destruction of surface peats by fire and the pyric origin of modern lakes on the landscape.

4. Overall, the sedimentation rates from 9100 to 4500 BP are not extremely different between tie-points, as Fig. 3 demonstrates, until the top 30 cm is reached. At this age of 4530 BP, we do not know whether peat accumulation suddenly slowed dramatically, with accumulation almost balanced by degradation, or whether the peat which accumulated to the present has been only very recently oxidized.

5. Of major significance is evidence for surprisingly old ages of the uppermost peat in this part of Siberia. These results suggest a clear lack of peat accumulation in recent millennia, either due to very low net productivity, or alternatively, recent oxidation of fossil peats. The reasons for these changes are complex, and future studies of additional peat sections involving bulk density, C/N ratios, and bryophyte species identification are needed to further examine the role of Siberian peatlands in the carbon cycle.

Acknowledgements. – We greatly appreciate the field assistance given by many colleagues in 1991. We thank Olga Morozova for bryophyte identification, Lloyd Burckle for diatom identification, Elaine Stock for processing pollen, Maxwell Kelley for laboratory assistance, Lily Del Valle for drafting skills, and Mary Edwards, an anonymous reviewer, and the editor for helpful comments on the manuscript. A NASA interdisciplinary grant to Dorothy Peteet, a Lamont summer internship to William Bardeen, and an NRC Research Associateship award to Andrei Andreev supported this research. This is Lamont Doherty contribution number 5783.

References

- Alekseeva, V. A., Kind, N. B., Matveeva, O. V. & Troitsky, C. A. 1965: New data concerning the absolute chronology of the Upper Pleistocene and the Holocene in Siberia. *Doklady AN SSSR* 160(5), 1233–1236 (in Russian).
- Andreev, A. A. & Klimanov, V. A. 1989: Vegetation and climate history of Central Yakutia during the Holocene and the Late Pleistocene. In Ivanov, B. F. & Palymsky, B. F. (eds.): *Formirovaniye rel'efa, korelyatnykh otlozheniy i rossyppei Severo-Vostoka SSSR*, 28–51. SVKNII, Magadan (in Russian).
- Andreev, A. A., Klimanov, V. A., Ospennikov, E. N. & Sulerzhitsky, L. D. 1993: Paleoenvironmental conditions of Southern Yakutia during the Holocene and the Late Pleistocene. *Izvestiya Akademii Nauk SSSR, seria geograficheskaya* 6, 89–100 (in Russian).
- Andreev, A. A., Velichko, A. A. & Klimanov, V. A. 1995: Environmental changes in tundra and forest zones of Northern Eurasia during the last 12 000 yr. In Buzkin, M. I. (ed.): *Dinamika ekosistem i evolutsiya biosfery* 2, 105–118. Paleontological Institute RAN, Moscow (in Russian).
- Andreev, A. A., Tarasov, P. E., Romanenko, F. A. & Sulerzhitsky, L. D. 1997: The Younger Dryas pollen records from Sverdrup Island (Kara sea). *Quaternary International* 41/42, 135–139.
- Andreev, A. A., Tarasov, P. E., Romanenko, F. A., Sulerzhitsky, L. D. & Terekhov, K. I. in press: Vegetation development on the west coast of Baidaratskaya Guba during the Late Pleistocene and Holocene. *Stratigrafiya i geologicheskije korrelatsii* (in Russian).
- Arealy derev'ev i kystarnkov SSSR 1977* (Trees and Shrub Distributions of USSR) V. 1. 164 pp. Nauka, Leningrad. (in Russian).
- Arkhipov, S. A. 1998: Stratigraphy and paleogeography of the Sartan glaciation in west Siberia. *Quaternary International* 45/46, 29–42.
- Arkhipov, S. A. & Volkova, V. S. 1994: *Geologicheskaya istoriya, landshafity i klimatyi pleistotsena Zapadnoi Sibiri* (Geological history, pleistocene landscapes and climates in West Siberia), NIZ OIGGM SO RAN. 105 pp. Novosibirsk (in Russian).
- Astakhov, V. 1998: The last ice sheet of the Kara Sea: terrestrial constraints on its age. *Quaternary International* 45/46, 19–28.
- Astakhov, V. I. & Isayeva, L. L. 1988: The 'ice hill': An example of 'retarded deglaciation' in Siberia. *Quaternary Science Reviews* 7(1), 29–40.
- Belyea, L. R. & Warner, B. G. 1996: Temporal scale and the accumulation of peat in a Sphagnum bog. *Canadian Journal of Botany* 74, 366–377.
- Belorusova, Zh. M., Lovelius, N. V. & Ukraintseva, V. V. 1987: Regional characteristics of the Holocene environmental changes on Taymyr Peninsula. *Botanicheskij Zhurnal* 72(5), 610–618 (in Russian).
- Berger, A. L. 1978: Long-term variations of daily insolation and Quaternary climatic changes. *Journal of Atmospheric Sciences* 35, 2362–2367.
- Berglund, B. E. & Ralska-Jasiewiczowa 1986: Pollen analysis and pollen diagrams. In Berglund, B. E. (ed.): *Handbook of Holocene Palaeoecology and Palaeohydrology*, 455–484. Interscience, New York.
- Billings, W. D. 1987: Carbon balance of Alaskan tundra and taiga ecosystems: past, present and future. *Quaternary Science Reviews* 6, 165–177.
- Botch, M. S., Kobak, K. I., Vinson, T. S. & Kolchugina, T. P. 1994: Carbon pools and accumulation in peatlands of the former Soviet Union. *Global Biogeochemical Cycles* 9(1), 37–46.
- Bridgham, S. D., Johnston, C. A., Pastor, J. & Updegraff, K. 1995: Potential feedbacks of northern wetlands on climate change. *Bioscience* 45, 262–274.
- Chapin, F. S., Miller, P. C., Billings, W. D. & Coyne, P. I. 1980: Carbon and nutrient budget and their control in coastal tundra. In Brown, J., Miller, P. C., Tieszen, L. L. & Bunnell, F. K. (eds.): *An Arctic Ecosystem, the Coastal Tundra at Barrow, Alaska*, 458–484. Dowden, Hutchinson & Ross, Stroudsburg, Pa.
- Charman, D. J., Aravena, R. & Warner, B. G. 1994: Carbon dynamics in a forested peatland in north-eastern Ontario, Canada. *Journal of Ecology* 82, 55–62.
- Clymo, R. S. 1984: The limits to peat growth. *Philosophical Transactions of the Royal Society of London B. Biological Science* 303, 605–654.
- Clymo, R. S. 1991: Peat growth. In Shane, L. C. K. & Cushing, E. J. (eds.): *Quaternary Landscapes*, 76–112. University of Minneapolis Press, Minneapolis.
- Czerepanov, S. K. 1995: Vascular Plants of Russia and Adjacent States (The Former USSR). 516 pp. Cambridge University Press, UK.
- Danilov, I. D. 1987: The hypothesis of ice sheet glaciation of Arctic shelf and nearby plains of Northern Eurasia. *Izvestia AN SSSR seria geograficheskaya* 2, 80–88 (in Russian).
- Dean, W. Jr. 1974: Determination of carbonate and organic matter in calcareous sediments and sedimentary rocks by loss on ignition: comparison with other methods. *Journal of Sedimentary Petrology* 44, 242–248.
- Denton, G. & Karlen, W. K. 1973: Holocene climatic variations – their patterns and probable cause. *Quaternary Research* 3, 155–205.
- Faustova, M. A. & Velichko, A. A. 1992: Dynamics of the last glaciation in northern Eurasia. *Sveriges Geologiska Undersökning, Seria Ca* 81, 113–118.
- Filina, M. I. 1978: Pollen morphology of Siberian and Far Eastern birches. Pollen of Sect. *Fruticosae* Rgl. In: Grichuk, V. P. *Palynologicheskije Issledovaniya na severo - Vostoke SSSR*, 102–110. Vladivostok, Publishing House DVNTS (in Russian).
- Filina, M. I. 1976: Pollen morphology of Siberian and far eastern birches. Pollen of Sect. *Nanae* Rgl. *Bulleten MOIP, otdel biolog.* 81(3), 230–238 (in Russian).
- Firsov, L. V., Troitsky, S. L., Levina, T. P. & Panychev, V. A. 1974: Radiocarbon dates of the geochronology laboratory of the Institute of Geology and Geophysics. *Byulleten Komissii po izucheniyu chetvertichnogo perioda* 38, 190–197 (in Russian).
- Giterman, R. E. 1963: *Etapy razvitiya chetvertichnoi rastitel'nosti Yakutii i ikh znachenie dlya stratigrafii* (Stages of vegetation development in Yakutia and their significance for stratigraphy). *Trudy Geologicheskogo Instituta AN SSSR* 78, 192 pp. (in Russian).
- Gorham, E. 1991: Northern Peatlands: role in carbon cycle and probable responses to climatic warming. *Ecological Applications* 1, 182–195.
- Grosswald, M. G. 1980: Late Weichselian ice sheet of northern Eurasia. *Quaternary Research* 13, 1–32.
- Grosswald, M. G. 1998: Late-Weichselian ice sheets in Arctic and Pacific Siberia. *Quaternary International* 45/46, 3–18.
- Hansen, J., Lacs, A., Ruedy, R., Sato, M. & Wilson, H. 1993: How sensitive is the world's climate? *National Geographic Research and Exploration* 9, 142–158.
- Heusser, C. J., Heusser, L. E. & Peteet, D. M. 1985: Late Quaternary climate changes on the American North Pacific coast. *Nature* 315, 485–487.
- Karavaev, M. P. & Skryabin, S. Z. 1971: *Rastitel'nyi mir Yakutii* (Vegetation of Yakutia). 126 pp. Yakutian Publishing House, Yakutsk (in Russian).
- Katz, N. Ya. & Katz, S. V. 1947: Vegetation history of wetlands in Northern Siberia as an indicator of postglacial landscape changes. *Trudy Instituta Geografii* 37, 331–348 (in Russian).
- Katz, N. Ya. & Katz, S. V. 1958: A contribution to the history of the flora and the vegetation of North-West Siberia in the Late- and Postglacial time. *Botanicheskij Zhurnal* 43(7), 998–1014 (in Russian).
- Keeling, C. D., Chin, J. F. S. & Whorf, T. P. 1996: Increased activity of northern vegetation inferred from atmospheric CO₂ measurements. *Nature* 382, 146–149.

- Khotinsky, N. A. & Klimanov, V. A. 1985: Radiocarbon age and climate conditions of the palsa mires development on Nadym-Kazym interfluvium during the Holocene. In Elina, G. A. (ed.): *Voprosy ekologii rasteniy bolot, bolotnykh mestoobitaniy i torfyanykh zalezhei*, 132–140. Karelsky Filial AN SSSR, Petrozavodsk (in Russian).
- Kind, N. V. 1974: Geokhronologia pozdnego antropogena po izotopnym dannym (Geochronology of the Late Antropogene by isotope data). *Trudy Geologicheskogo Instituta AN SSSR* 257, 255 pp. (in Russian).
- Klimanov, V. A. & Levina, T. P. 1989: Climatic changes during the Holocene in West Siberia (Yentarnyy peat section). In Ivanov, B. F. & Palymsky, B. F. (eds.): *Formirovanie rel'efa, korelyatnykh otlozheniy i rosspey Severo-Vostoka SSSR*, 21–27. SVKNII, Magadan (in Russian).
- Klimaticheskii atlas SSSR* (Climatic Atlas of the USSR) 1960: *Gidrometeoizdat*. 365 pp. Moscow (in Russian).
- Koerner, R. M. & Fisher, D. A. 1990: A record of Holocene summer climate from a Canadian high-Arctic ice core. *Nature* 343, 630–631.
- Koshkarova, V. L. 1986: *Semennye flory torfyanikov Sibiri* (Seed floras of wetlands in Siberia). 121 pp. Nauka, Novosibirsk (in Russian).
- Kuhry, P. & Vitt, D. H. 1996: Fossil carbon/nitrogen ratios as a measure of peat decomposition. *Ecology* 77(1), 271–275.
- Levina, T. P. & Nikitin, V. P. 1973: Paleobotanic characteristics of a Holocene peatland of Mys Karginy area on Yenisey River. In Saks V. V. (ed.): *Pleistotsen Sibiri i sosednikh oblastei*, 80–85. Nauka, Moscow (in Russian).
- Levkovskaya, G. M. 1966: New palynological data from Late Glacial and Holocene deposits on the north of West Siberia. In Saks, V. V. (ed.): *Verkhniy pleistotsen. Stratigrafiya i absolynaya geokhronologia*, 182–184. Moscow, Nauka (in Russian).
- Levkovskaya, G. M., Kind, N. V., Zavel'sky, F. S. & Forova, V. C. 1970: Radiocarbon age of peatlands near Igarka and Holocene stratigraphy of West Siberia. *Byulleten kommissii po izucheniyu chetvertichnogo perioda* 37, 94–101 (in Russian).
- MacDonald, G. M., Kremenetski, C. V., Velichko, A. A., Cwynar, L. C., Riding, R. T., Goleva, A. A., Andreev, A. A., Borisova O. K., Edwards T. W. D., Hammarlund D., Szeicz, J. M., Forman, S. & Gattaulin, V. I. (submitted): Eurasian treeline change linked to the North Atlantic. *Nature*.
- Mahaney, W. C. 1998: Scanning electron microscopy of Pleistocene sands from Yamal and Taz Peninsulas, Ob River estuary, northwestern Siberia. *Quaternary International* 45/46, 49–57.
- Malyasova, E. S., Novikov, S. M. & Usova, L. I. 1991: Dynamics of peat accumulation and the formation of palsa mires in Western Siberia. *Botanichesky Zhurnal* 76(9), 1227–1237 (in Russian).
- Matthews, E. & Fung, I. 1987: Methane emission from natural wetlands: global distribution, area, and environmental characteristics of sources. *Global Biogeochemical Cycles* 1, 61–86.
- Michel, F. A. 1998: The relationship of massive ground ice and the late Pleistocene history of northwest Siberia. *Quaternary International* 45/46, 43–48.
- Oechel, W. C., Hastings, S. J., Vourlitis, G., Jenkins, M., Riechers, G. & Grulke, N. 1993: Recent change of Arctic tundra ecosystems from a net carbon dioxide sink to a source. *Nature* 361, 520–523.
- Olson, J. S. 1963: Energy storage and the balance of producers and decomposers in ecological systems. *Ecology* 44, 322–341.
- Peteet, D. M. 1986: Modern pollen rain and vegetational history of the Malaspina Glacier district, Alaska. *Quaternary Research* 24, 100–120.
- Peteet, D. M. 1991: Postglacial migration history of lodgepole pine near Yakutat, Alaska. *Canadian Journal of Botany* 69, 786–796.
- Popova, A. I. 1961: Surface pollen spectra of modern vegetation communities of Central Yakutia. In Komarov, V. I. (ed.): *Materialy po rastytelnosti Yakutii*, 3–6. Publishing House of AN USSR, Leningrad (in Russian).
- P'yavchenko, N. I. 1971: Investigation of paleogeography of West Siberia during the Holocene. In Neishtadt M. I. (ed.): *Palinologia golotsena*, 139–156. Nauka, Moscow (in Russian).
- Savvinova, G. M. 1975: Pollen spectra from different types of herb communities of Central Yakutia. In Ivanov V. I. (ed.): *Palynologicheskie materialy k stratigrafii osadochnykh otlozheniy Yakutii*, 98–112. Yakutian Publishing House, Yakutsk (in Russian).
- Schlesinger, W. H. 1990: Evidence from chronosequence studies for a low carbon potential of soils. *Nature* 348, 232–234.
- Shevelova, N. S. & Khomichevskaya L. S. 1967: *Geokriologicheskie uslovia Yeniseiskogo severa* (Geocryological conditions of Northern Yenisey), Nauka, Moscow, 127 pp. (in Russian).
- Shpolyanskaya, N.A. 1981: *Vechnaya merzlota v Zapadnoi Sibiri i tendentsii ee razvitiia* (The frozen zone of the lithosphere of West Siberia and tendencies of its development). 168 pp. Moscow University Press, Moscow (in Russian).
- Subetto, D. A., Arslanov, Kh. A., Davydova, N. N., Pushenko, M. Ya. & Khomutova, V. I. 1995: Yamylymyaganto Lake, Pur River valley. In Davydova, N. N., Martinson G. G. & Sevastyanov, D. V. (eds.): *Istoriya ozer Aziatskogo severa. (Seria: Istoriya ozer)*, 46–51. Nauka, St. Petersburg (in Russian).
- Terasmae, J. 1972: Muskeg as a climate-controlled ecosystem. *Proceeding of 14th Muskeg Research Conference. Kingston. 1971. Natural Research Council Technical. Memorandum* 102, 147–158.
- Tolonen, K., Vasander, H., Damman, A. W. H. & Clymo, R. S. 1992: Rate of apparent and true carbon accumulation in boreal peatlands. *Proceeding of 9th International Peat Congress, Uppsala, Sweden, 22–26 June 1992, Volume 1*, 319–333.
- Ukrainseva, V. V. 1982: The environment and conditions of mammoth death in the upper part of the Yuribei River (Gydan Peninsula). In Vereshagin, N. K. (ed.): *Yuribeiskiy mamont*, 19–29. Nauka, Moscow (in Russian).
- Vardy, S. R., Warner, B. G. & Aravena, R. 1997: Holocene climate effects on the development of peatland on the Tuktoyaktuk Peninsula, Northwest territories. *Quaternary Research* 47, 90–104.
- Vasil'chuk, Yu.K. 1992: *Izotopno-kislородnyi sostav podzemnykh l'dov (opyt paleokriologicheskikh rekonstruktsiy) Tom 2* (Oxygen isotope composition of ground ice application to paleogeocryological reconstructions). 170 pp. Vol. 2, Moscow (in Russian).
- Vasil'chuk, Yu.K., Petrova, E.A. & Serova, A.K. 1983: Some characteristics of Yamal paleogeography during the Holocene. *Byulleten kommissii po izucheniyu chetvertichnogo perioda* 52, 73–89 (in Russian).
- Vas'kovsky, A. P. 1957: Pollen spectra of vegetation communities in the extreme Northeast of USSR and their significance for Quaternary vegetation reconstruction. *Materialy po geologii i poleznym iskopaemym Severo-Vostoka SSSR* 11, 130–178, Magadan (in Russian).
- Velichko, A. A., Andreev, A. A. & Klimanov, V. A. 1997: The dynamics of climate and vegetation in the tundra and forest zone during the Late Glacial and Holocene. *Quaternary International* 41/42, 71–96.
- Warner, B. G., Clymo, R. S. & Tolonen, K. 1993: Implications of peat accumulation at Point Escuminac, New Brunswick. *Quaternary Research* 39, 245–248.
- Zoltai, S. C. 1993: Cyclic development of permafrost in the peatlands of Northwestern Alberta, Canada. *Arctic and Alpine Research* 25, 240–246.
- Zoltai S. C. & Tarnocai C. 1975: Perennially frozen peatlands in the western Arctic and Subarctic of Canada. *Canadian Journal of Earth Sciences* 12, 28–43.