

# Estimating biological parameters of a size-dependent NPZD ecosystem model

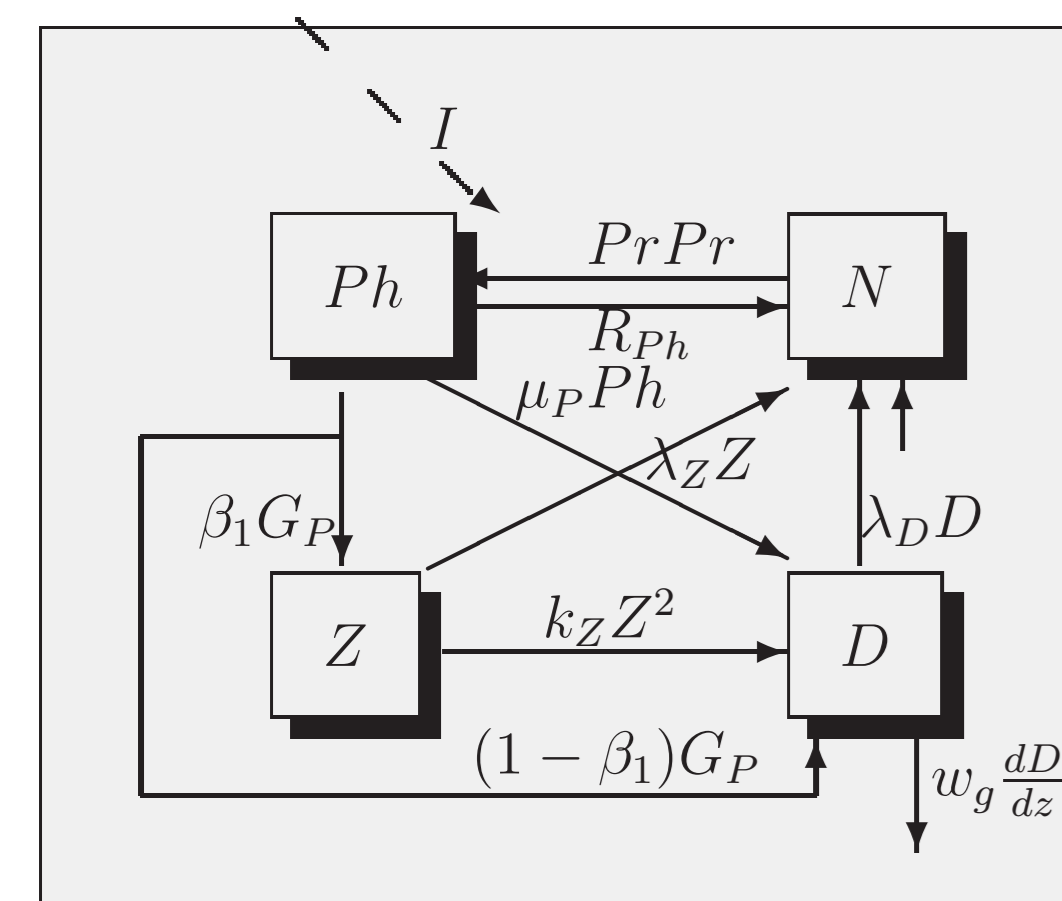
S. Losa<sup>1</sup>, J. Schröter<sup>1</sup>, M. Wenzel<sup>1</sup>, I. Kriest<sup>2</sup>, A. Oschlies<sup>3</sup>

<sup>1</sup>AWI, Bremerhaven, Germany; <sup>2</sup>IFM-GEOMAR, Kiel, Germany;  
<sup>3</sup>School of Ocean and Earth Science, University of Southampton, UK  
 sloza@awi-bremerhaven.de

## Abstract

A new 1-dimensional 4-compartment biogeochemical model is developed by I. Kriest and A. Oschlies within the MERSEA project. Implicitly accounting for phytoplankton different size classes, the new model is one more attempt to describe the dynamics of phytoplankton Ph, zooplankton Z, nutrients N and detritus D under different physics given one (a unique) set of biological parameters. The model is calibrated with and validated against time series data collected at 6 locations of the World Ocean. Here we apply the Sequential Importance Resampling filter (Rubin, 1988) for the parameter optimization problem (Kivman, 2003). Several nonparametrical statistics criteria are presented and used for estimating "goodness" of the model to data fit.

## 1 Model



In the model, phytoplankton is presented by a spectrum of different sizes. Thus, some of the parameterized biogeochemical process- in particular, phytoplankton growth and exudation, - are size-dependent. (We will refer to the model as SD NPZD).

Figure 1. NPZD model schematic diagram.

## 2 Data

The model is constrained by monthly mean data of the Bermuda Atlantic Time-series Study (BATS 32°N, 65°W), Ocean Weather station PAPA (50°N, 145°W), Equatorial Pacific Ocean (EqPac, 0°S, 140°W), the North Atlantic Bloom Experiment (NABE, 47°N, 20°W), the Arabian Sea C station (AS-C, 10°N, 65°E), the Ross Sea (63.2°S, 170°W) particularly, by measurements of dissolved inorganic nitrogen and chlorophyll concentrations.

## 3 Model calibration and validation

Nonparametrical (distribution free) rank statistics (based on "rank order") is used as criteria of "goodness" of model-to-data fit:

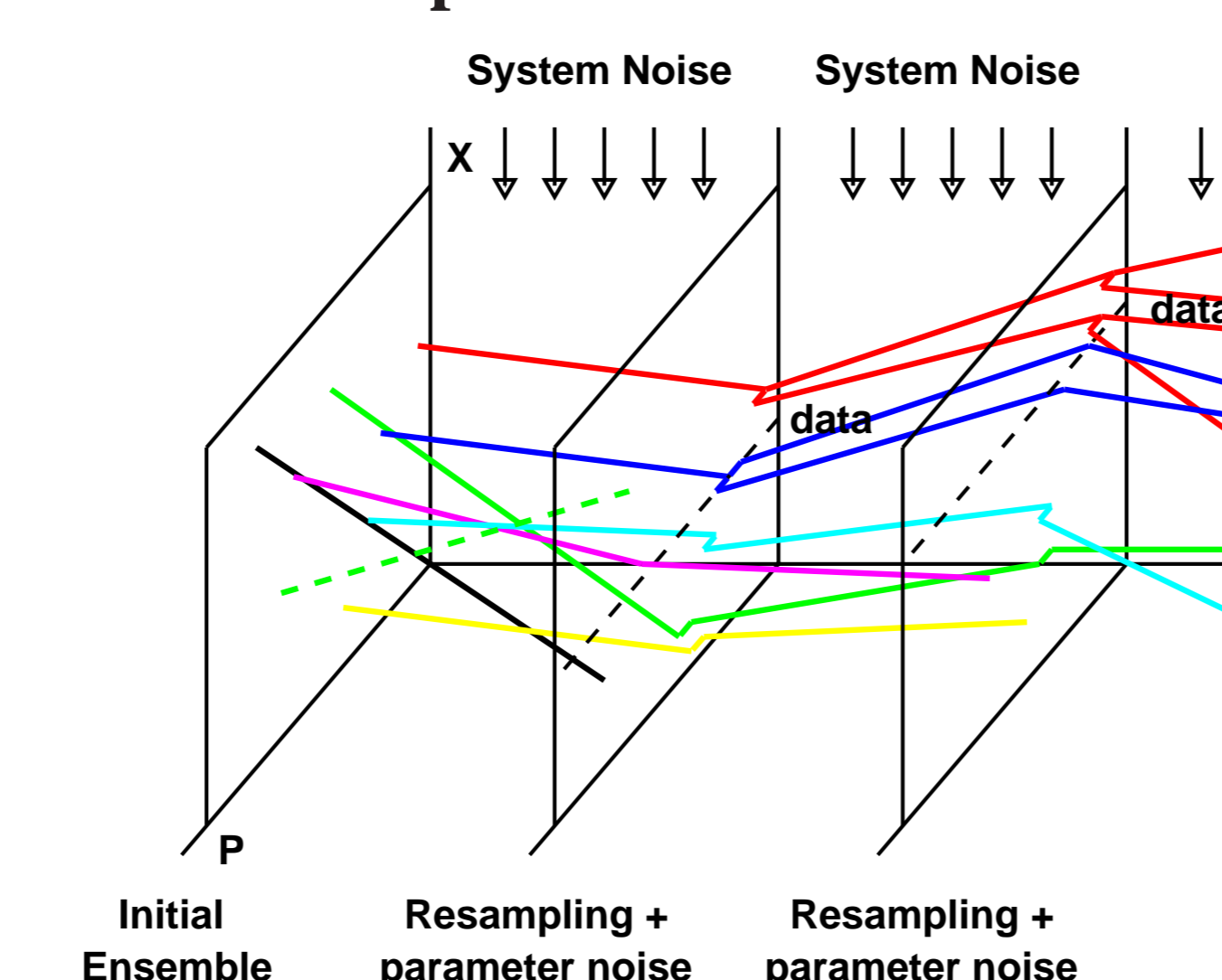
$r_{sp}$	Spearman Rank Correlation Coefficient, a measure of the strength of the associations between model components and data	$r_{sp} = 1 - 6 \sum \frac{d^2}{N(N^2-1)}$ , $d$ are differences in statistical ranks of respective variables
$W$	Wilcoxon test shows whether the model solution and data are of the same distributions (have same median value)	$W = (T - 0.25N(N-1) \pm 0.5) \sqrt{\frac{24}{N(N-1)(2N+1)}}$ , $T$ is a sum of negative (or positive) ranks, $N$ is the number of data
$MW$	Mann-Whitney U criterion tests whether all modes of data distribution and distribution of model results are similar and sampled equally well	$U = N^2 + \frac{N(N+1)}{2} - R_1$ , $MW = (U - 0.5N^2) \sqrt{\frac{12}{N^2(2N+1)}}$ , $R_1$ is the sum of model (or data) ranks

## Optimized model parameters

Symbol	Parameter, P	Initial value	Optimal value	Units
$\alpha$	Initial slope of the P-I curve	0.025	0.05	$(W m^{-2})^{-1}$
$\mu_P$	Phytoplankton mortality	0.03	0.01	$day^{-1}$
$\mu_Z$	maximum zooplankton grazing rate	2.00	1.05	$day^{-1}$
$k_G$	Zooplankton ingestion half-saturation constant	0.50	0.50	$mmolN m^{-3}$
$k_Z$	quadratic zooplankton mortality	0.20	0.42	$mmolN m^{-3}$
$\lambda_Z$	Zooplankton excretion rate	0.03	0.026	$day^{-1}$
$\lambda_D$	detritus remineralization rate	0.05	0.068	$day^{-1}$

Figure 2. (to the right) SIRF scheme.  $X = \{N, Ph, Z, D\}$ . Probability on the  $k$  ensemble  $\psi = \{X, P\}$  member to be resampled is equal to  $w^k = p(d|\psi_k) / \sum p(d|\psi_k)$ ,  $p(d|\psi_k) = (1 + (X^k - data)^2 \sigma_{data}^{-2})^{-1}$ ,  $\sigma_{data}$  is the error levels of the observations.

## Parameter optimization method



## 4 Results of simultaneous tuning the size dependent NPZD model for all the noted locations

**Model forcing:** solar radiation is calculated according to Brock (1981); mixing is assumed to be  $2592 m^2 d^{-1}$  in the upper mixed layer (monthly mean upper mixed layer depths are extracted from Levitus, 1994), then decreasing within 10m to  $2.592 m^2 d^{-1}$ ; nitrate concentrations at the upper boundary of the seasonal pycnocline are taken from Conkright et al (2002).

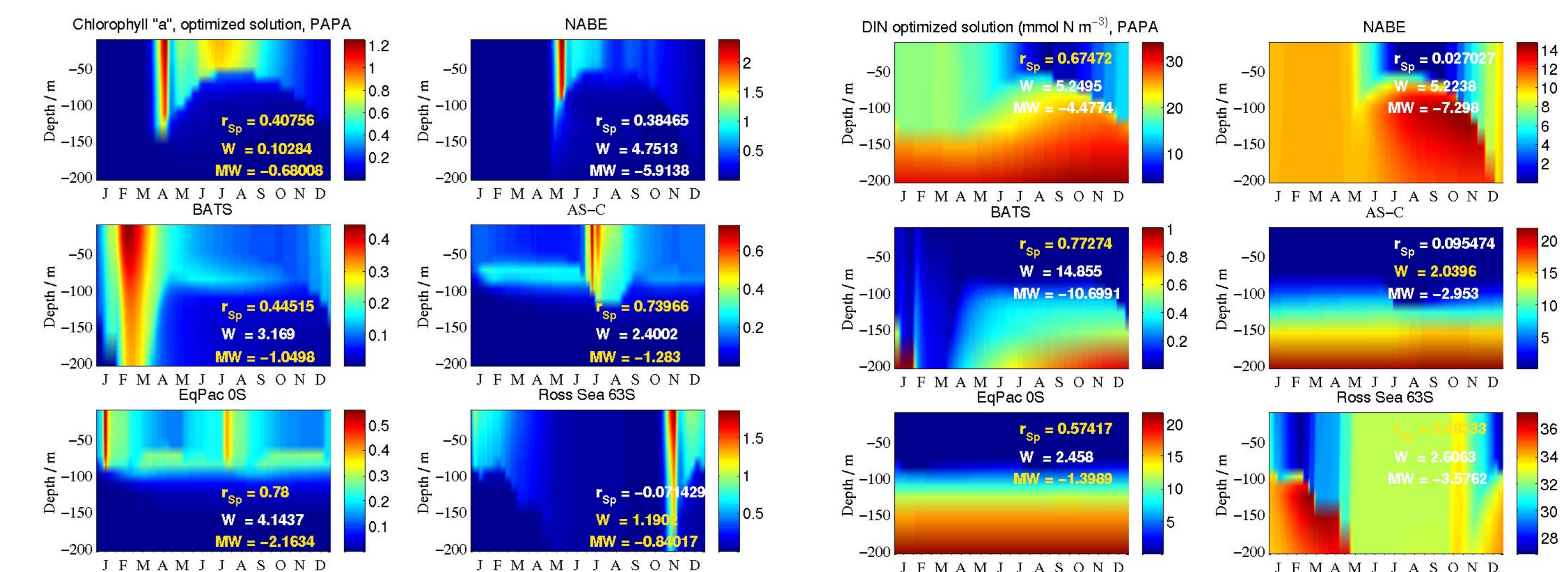


Figure 3. Chlorophyll "a" and dissolved inorganic nitrogen simulated by the size-dependent NPZD eco model at 6 sites.

The statistics criteria values of yellow color indicate sufficient agreement between model and observed concentrations, with respect to a certain criterion.

Comparing the quality of SD NPZD ecosystem model performance against a similar experiment carried out with a simple (not account for phytoplankton size structure) NPZD model version.

Table 1. Agreement between model (simple and SD versions) and observed chlorophyll "a"

Stat. criteria	PAPA		NABE		BATS		AS-C		EqPac.		Ross Sea	
	simple	SD	simple	SD	simple	SD	simple	SD	simple	SD	simple	SD
$r_{sp}$	0.72	0.41	0.88	0.38	0.05	0.45	-0.19	0.74	0.79	0.78	-0.07	-0.07
$MW$	-3.98	-0.68	-6.65	-5.91	-18.58	-1.05	-1.95	-1.29	-0.16	-2.16	-0.84	-0.84
$W$	2.92	0.10	4.77	4.75	11.97	3.17	1.77	2.4	1.53	4.14	0.91	1.19
notes						improved		improved				

Table 2. Agreement between model (simple and SD versions) and observed DIN concentrations

Stat. criteria	PAPA		NABE		BATS		AS-C		EqPac.		Ross Sea	
	simple	SD	simple	SD	simple	SD	simple	SD	simple	SD	simple	SD
$r_{sp}$	0.52	0.67	0.51	0.027	0.59	0.77	-0.60	0.095	0.56	0.57	-0.90	-0.90
$MW$	-9.15	-4.47	-7.30	-7.30	-9.85	-10.7	-4.55	-2.95	-2.41	-1.40	-3.50	-3.57
$W$	7.77	5.25	5.22	5.22	10.30	14.85	3.28	2.04	6.27	2.45	2.60	2.60
notes		improved						improved		improved		

## 5 Conclusions

Even with the slightly improved version of the biogeochemical model, it is still hardly, if ever, possible to reproduce the observed ecosystem dynamics under different environmental conditions given just one biological parameter set.

## References

- [1] Conkright, M.E., Garcia, H.E., O'Brien, T.D., Locarnini, R.A., Boyer, T.P., Antonov, J., 2002. World Ocean Atlas, Vol 4, Nutrients. Washington, D.C.: NOAA 52.
- [2] Levitus, S. and Boyer, T.P., 1994. World Ocean Atlas. Temperature. Washington, D.C.: NOAA 4.
- [3] Kivman, G.A., 2003. Sequential parameter estimation for stochastic systems. *Nonlinear Process. Geophys.* 10, 253-256.
- [4] Rubin D.B., 1988. Using the SIR algorithm to simulate posterior distribution, in Bayesian Statistics 3 (Eds. J.M. Bernardo, M.H. Degroot, D.V. Lindleyand, A.F.M. Smith). Oxford Univ. Press.,395-402.