



## PS70 (ARK-XXII/2) processing log

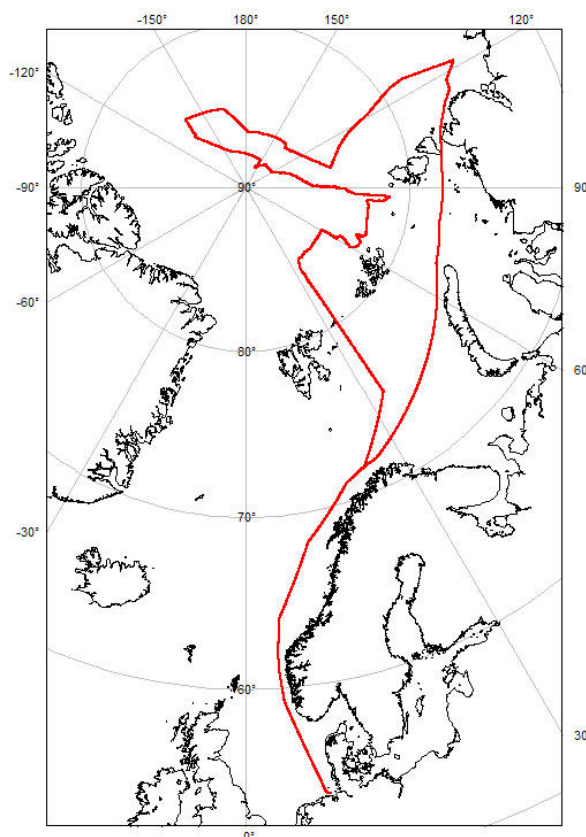
Sediment echosounder data (Atlas Parasound)

### **a) Original data**

The original Atlas Parasound data (ASD and PS3-files) was held on LTO tape. Only the SLF (secondary low frequency) data set was stored and used for processing. Data volume is 107 GB for ASD-files and 11.6GB for PS3-files.

### **b) Navigation**

The file headers of Atlas Parasound PS3-files contain the original navigation recorded at expedition time. No further processing was made.



**Figure 1: Map showing the positions (red points) extracted from PODAS system.**

### **c) Processing**

The ASD files as well as the PS3-files are published as TAR archives of data sets containing approx. 4 hours each. No further processing was performed.

### **d) Data visualization with SeNT**

The SeNT (Se suite for Windows NT) program (Universität Bremen, Hanno Keil) was used to create plots of the Parasound data.

The Parasound data was plotted as 'pixel per shot'. These plots were saved as GIF image files. The plots partly contain 'data gaps' visible as white blocks. No further analysis was performed.