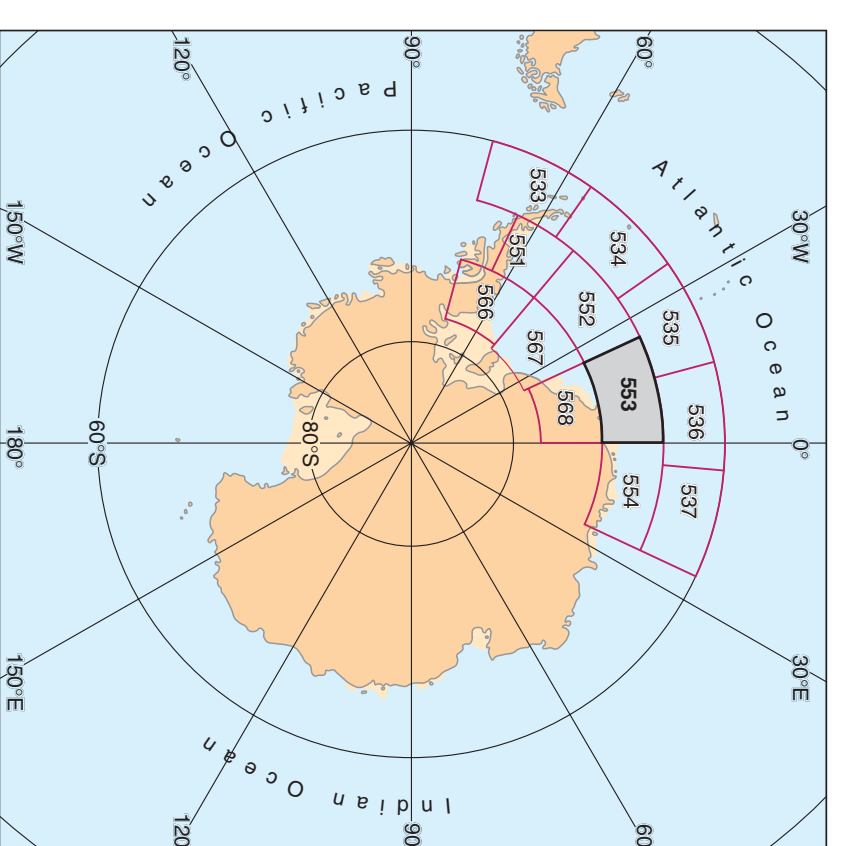
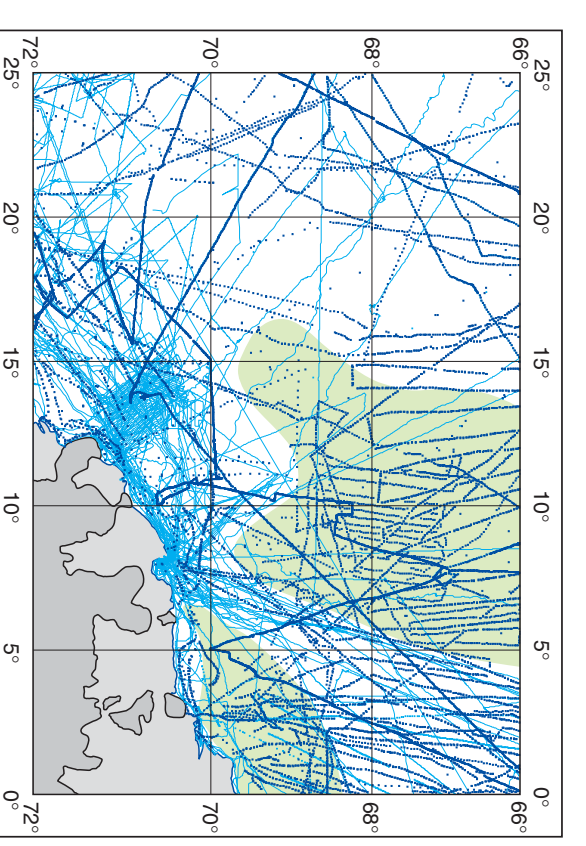


Sheet Index of the AWI BCWS



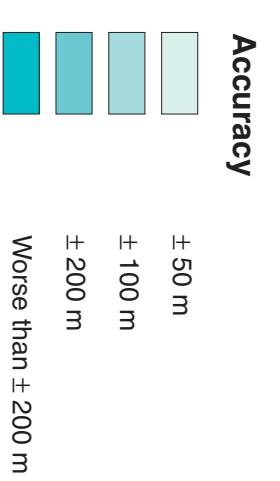
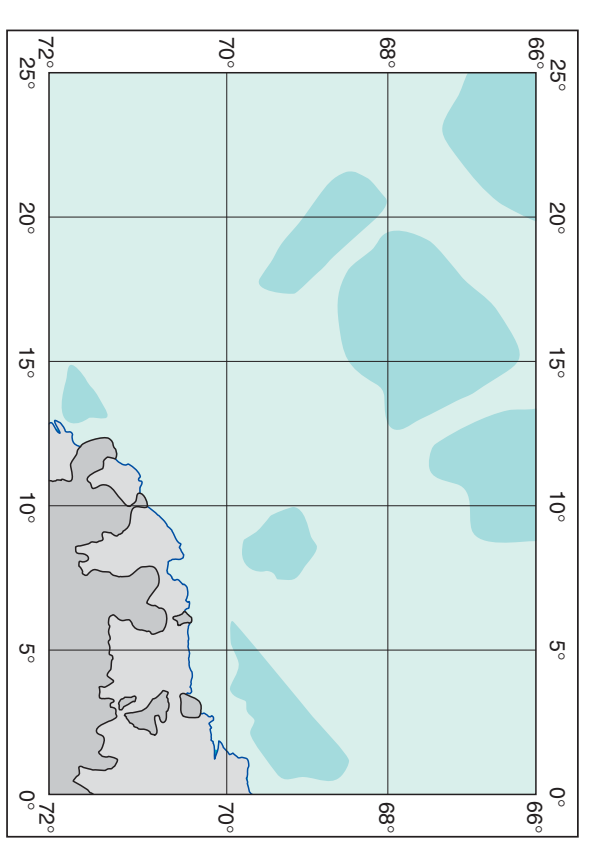
This chart is a bathymetric chart of the Weddell Sea, Antarctica, at a scale of 1:1 000 000. It is part of the AWI Bathymetric Chart Series (BCWS) and is sheet 553. The chart shows the bathymetry of the Weddell Sea, including the continental shelf, continental slope, and deep-sea floor. The chart is based on data from various sources, including the International Bathymetric Chart of the Arctic Ocean (IBCAO) and the International Bathymetric Chart of the Antarctic (IBCAO). The chart is a vector-based chart and is suitable for use in GIS applications. The chart is a part of the AWI Bathymetric Chart Series (BCWS) and is sheet 553. The chart is based on data from various sources, including the International Bathymetric Chart of the Arctic Ocean (IBCAO) and the International Bathymetric Chart of the Antarctic (IBCAO). The chart is a vector-based chart and is suitable for use in GIS applications.

Data Sources and References



Data Source	Area	Time	Scale
IBCAO	Arctic	2000	1:100 000
IBCAO	Antarctic	2000	1:100 000
Hydrographic Commission	Various	Various	Various
Scientific Operations	Various	Various	Various
Geological Survey	Various	Various	Various

Accuracy of Bathymetric Depths



The bathymetric chart is based on data from various sources, including the International Bathymetric Chart of the Arctic Ocean (IBCAO) and the International Bathymetric Chart of the Antarctic (IBCAO). The chart is a vector-based chart and is suitable for use in GIS applications. The chart is a part of the AWI Bathymetric Chart Series (BCWS) and is sheet 553. The chart is based on data from various sources, including the International Bathymetric Chart of the Arctic Ocean (IBCAO) and the International Bathymetric Chart of the Antarctic (IBCAO). The chart is a vector-based chart and is suitable for use in GIS applications.

