

# Ice matters

*Arctic and Antarctic under-ice communities linking  
sea ice with the pelagic food web*

Hauke Flores, J. A. van Franeker, C. David, B. Lange,  
V. Siegel, S. Kruse, B. Hunt, E. A. Pakhomov, ...

# Outline

## 1. Introduction

## 2. The sea ice – food web link

a) Lessons from the Antarctic ice underside

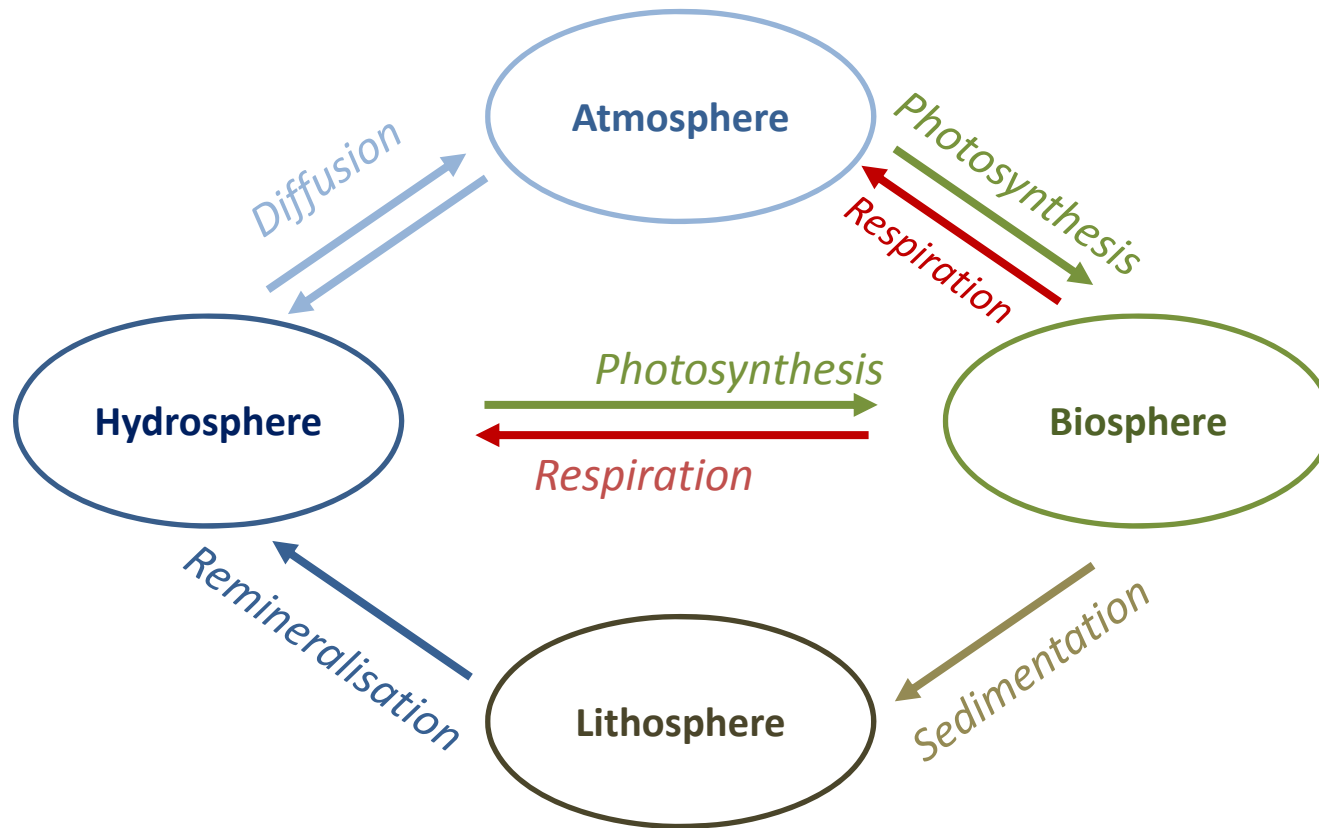
b) First insights from a field study in the Arctic

## 3. Ideas on future European research



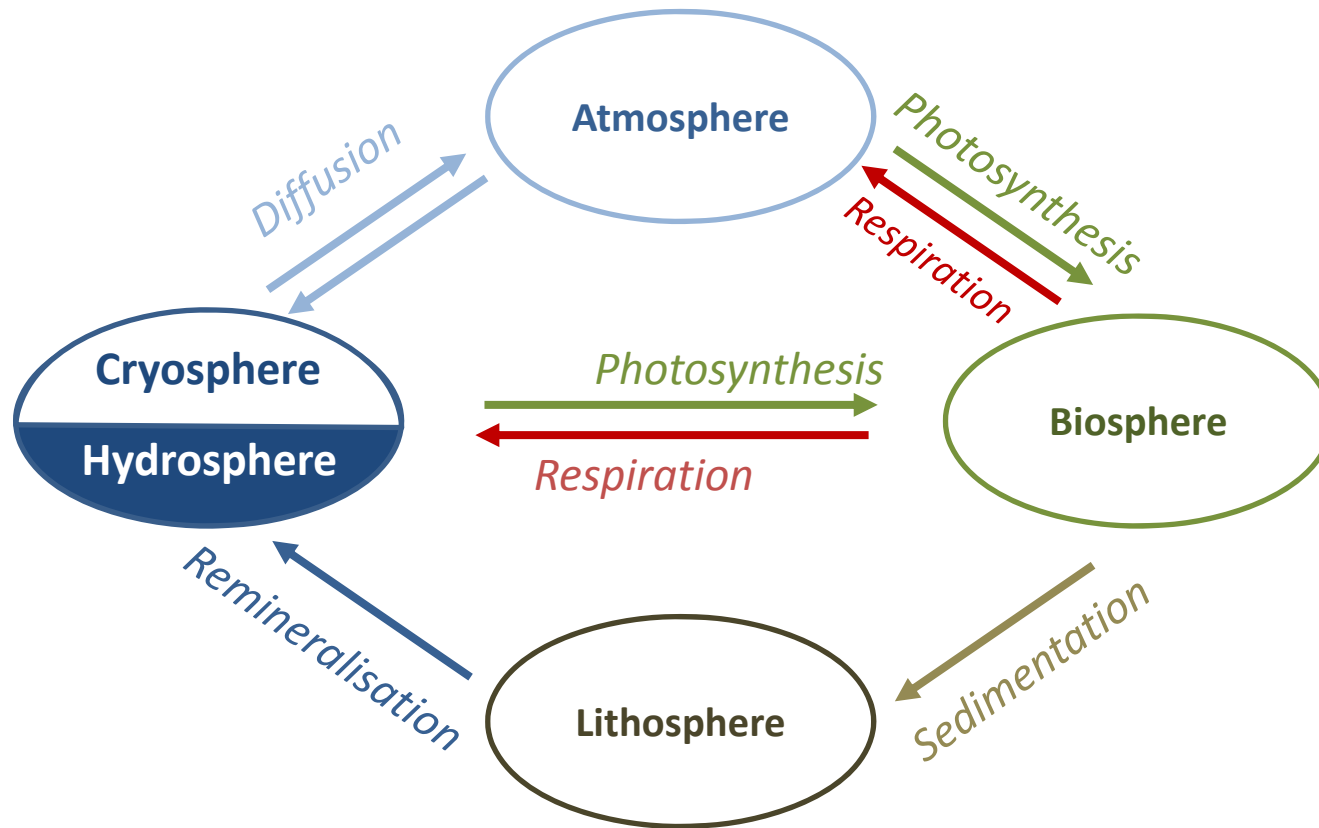
# Biogeochemical cycling in Polar ecosystems

*How will change affect the structure and function of polar ecosystems and biogeochemical cycles?*



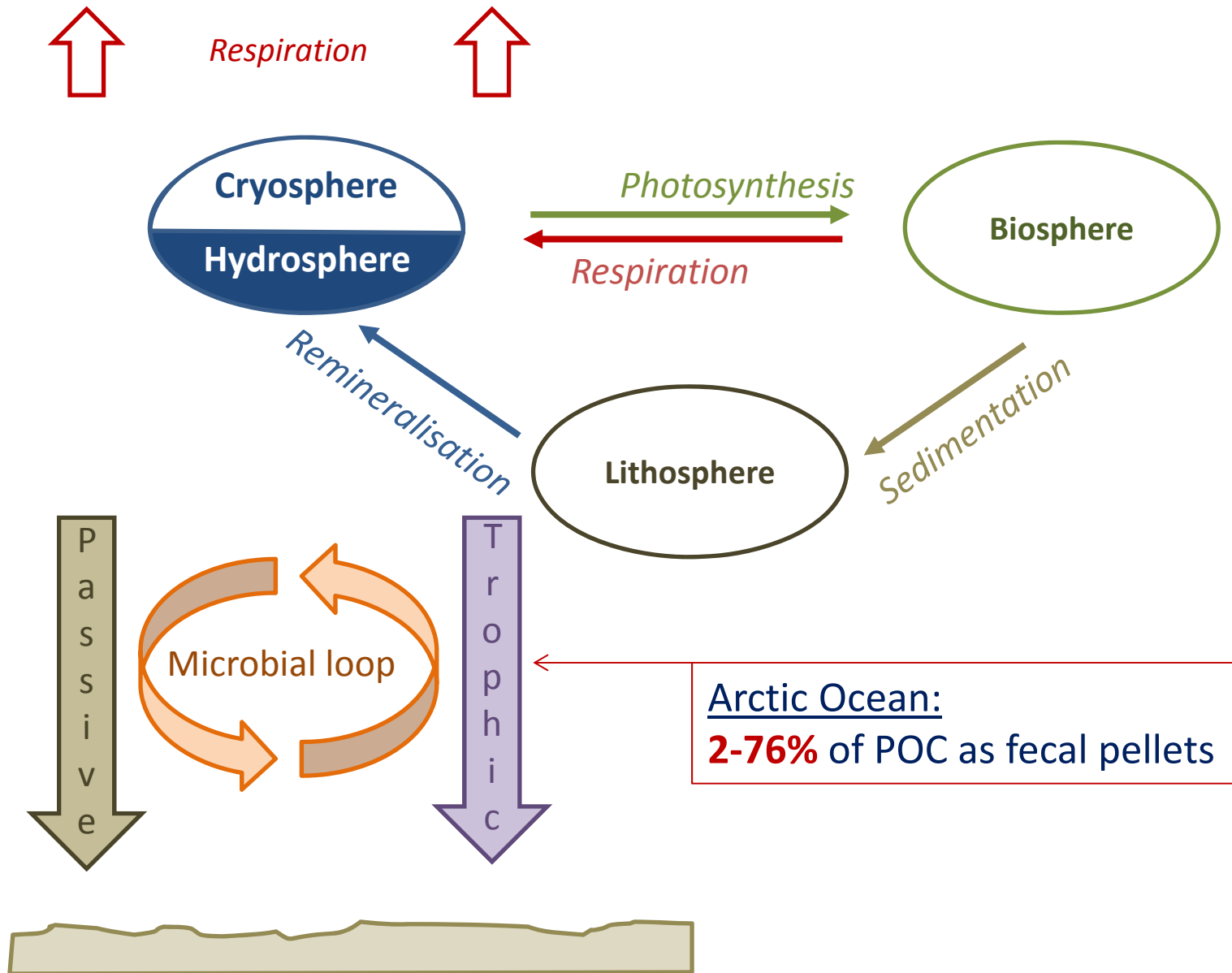
# Biogeochemical cycling in Polar ecosystems

*How will change affect the structure and function of polar ecosystems and biogeochemical cycles?*

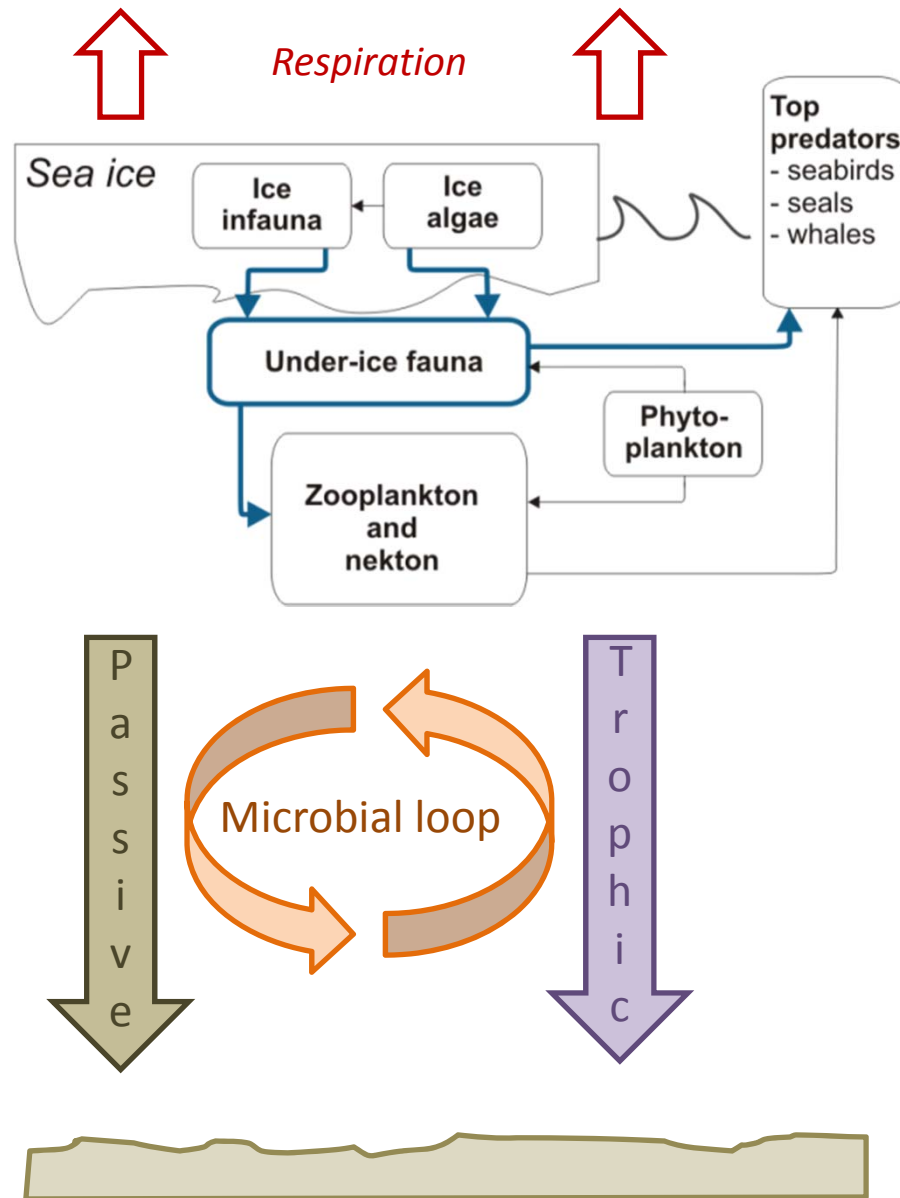




# Sea ice – food web transition



# Sea ice – food web transition

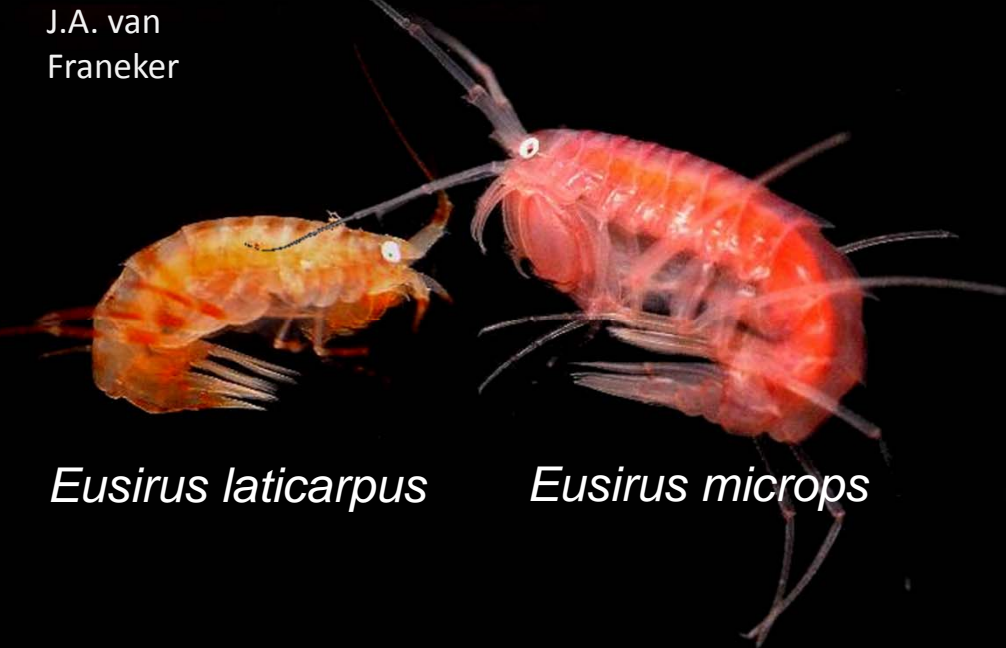


*Euphausia superba*



**Antarctic**

J.A. van Franeker



*Eusirus laticarpus*

*Eusirus microps*

Bluhm UAF/CoML

*Boreogadus saida*



**Arctic**

*Gammarus wilkitzkii*



*Apherusa glacialis*

Arcodiv.org

Bluhm&Gradinger UAF/CoML

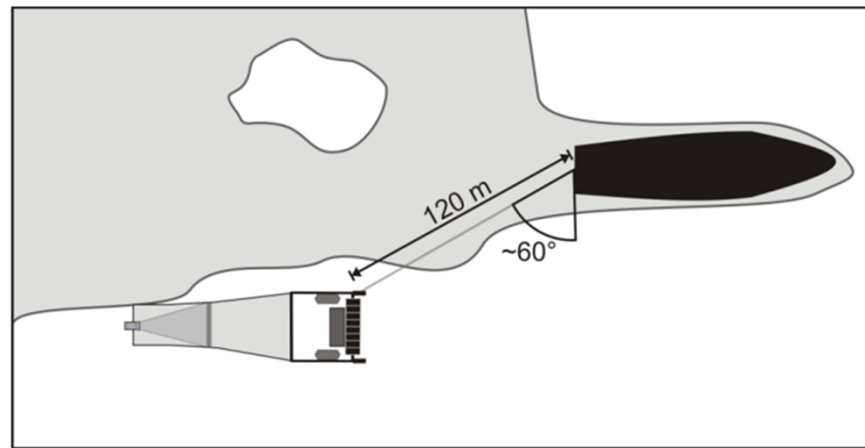
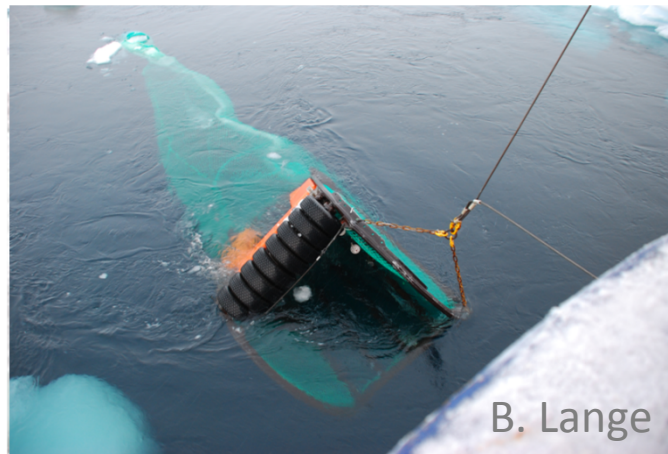
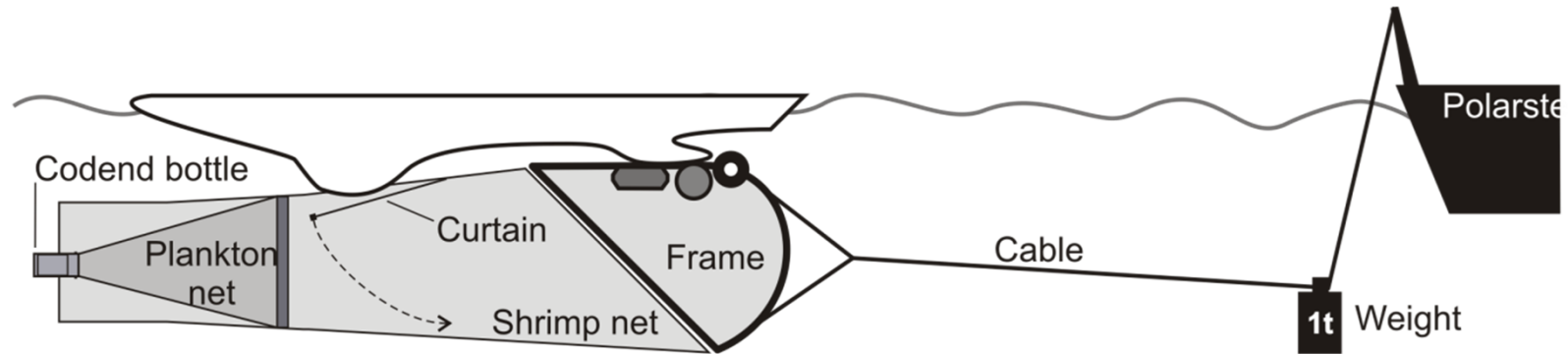


*Onissimus glacialis*

Arcodiv.org

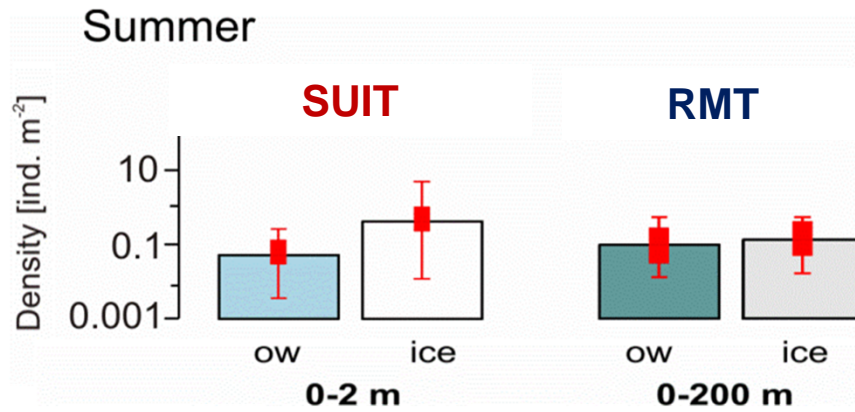
# Sea ice-associated fauna

# The Surface and Under-Ice Trawl (SUIT)

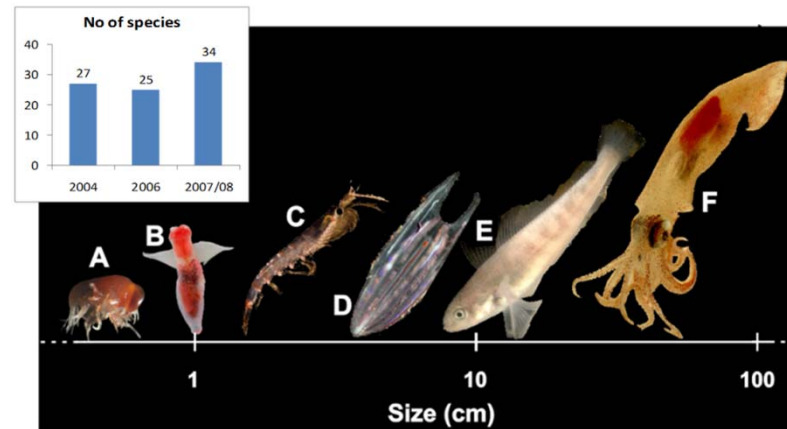
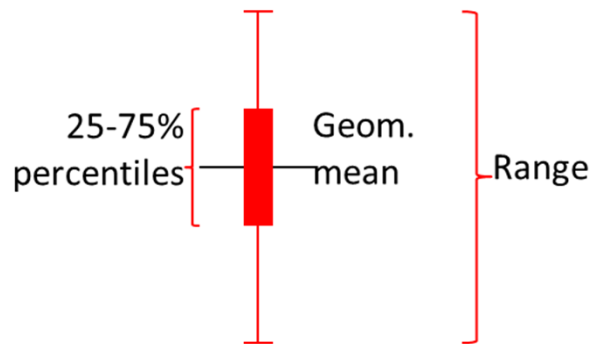




# Sea ice - an attractive habitat

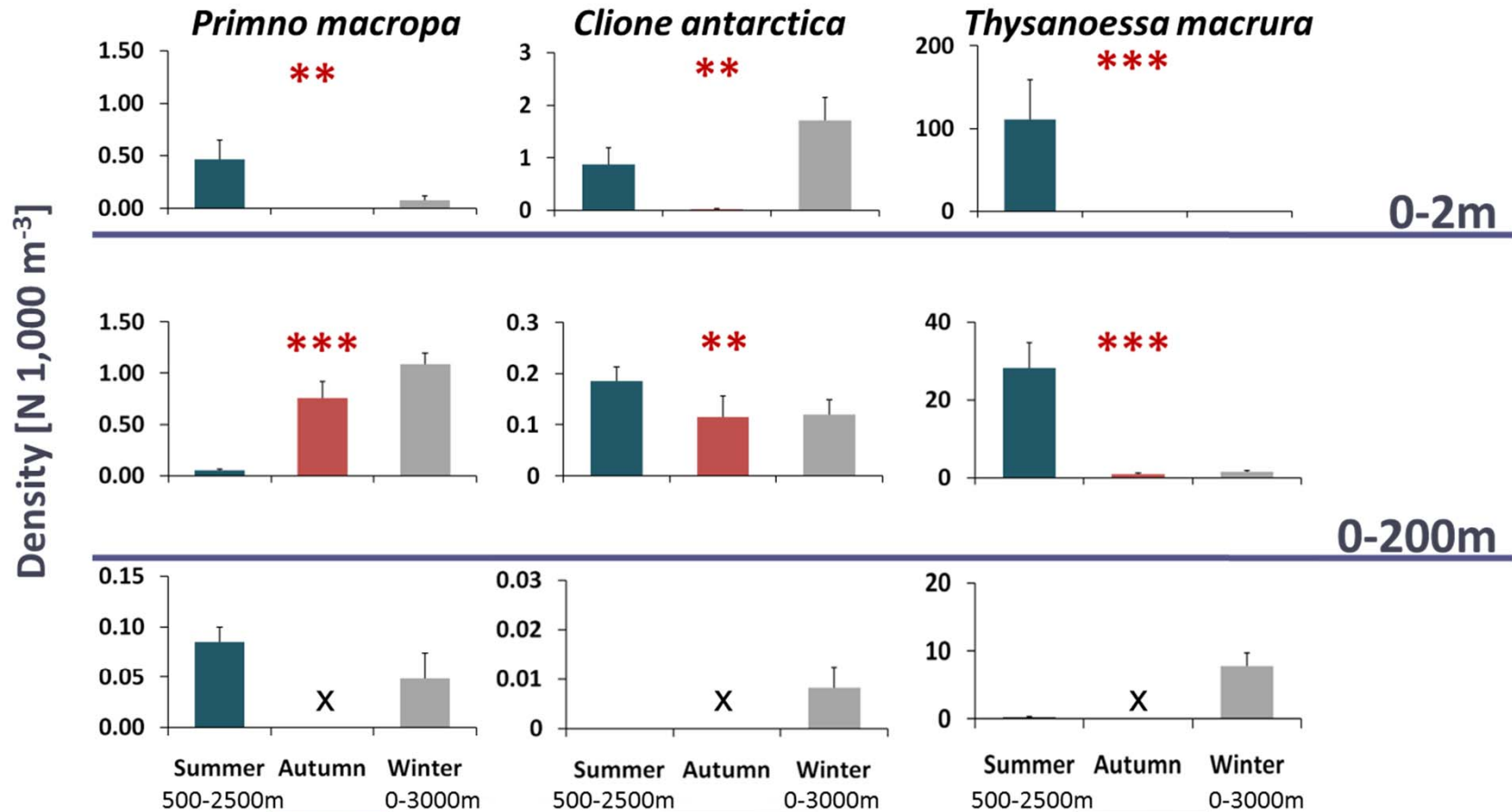


## Antarctic krill



Flores et al. (2012) PLoS ONE

# Sea ice – and seasonal depth distribution

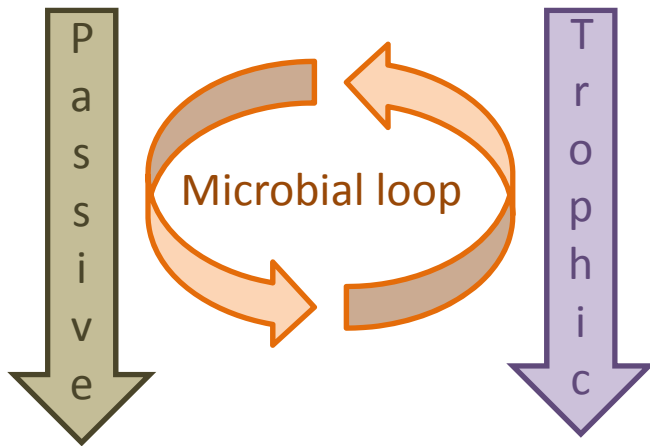
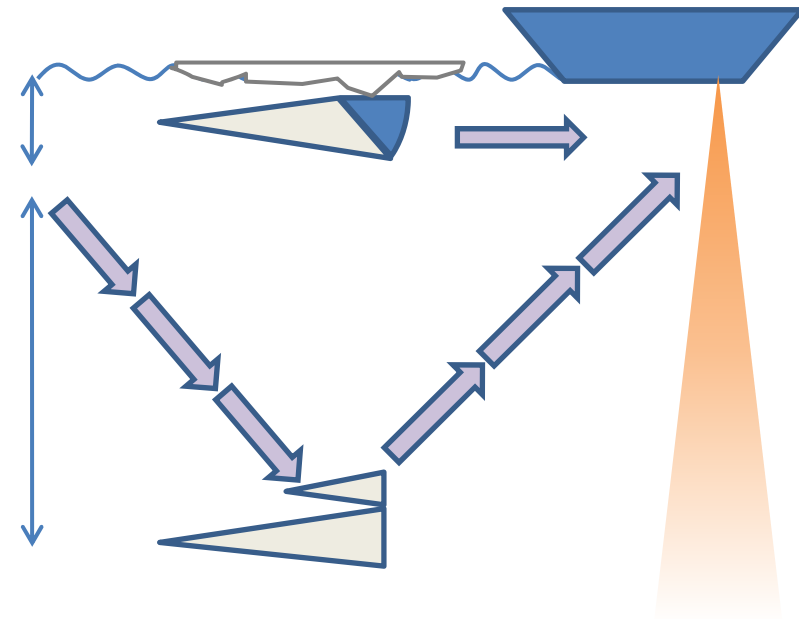
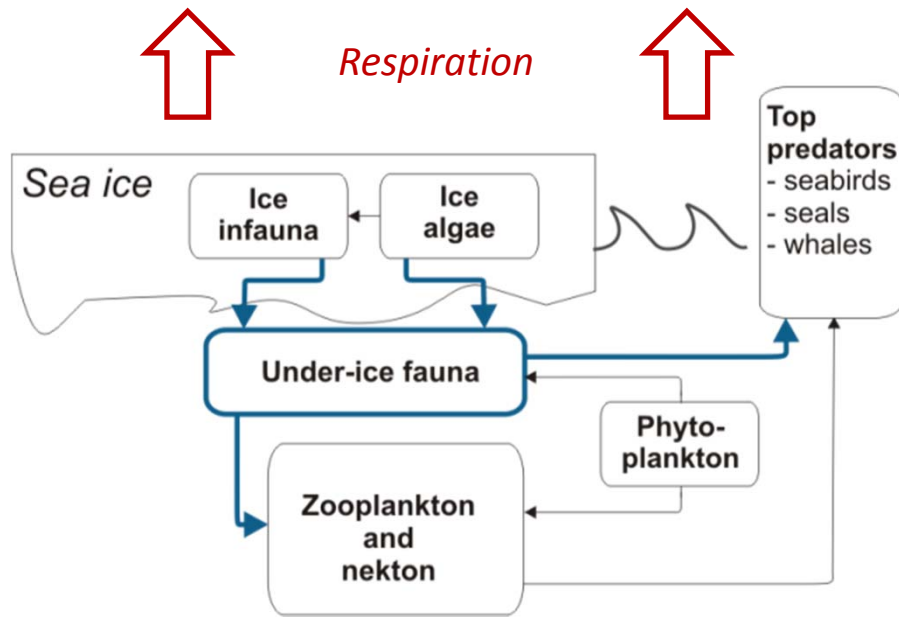


ANOVA :  
 \*  $p < 0.05$   
 \*\*  $p < 0.01$   
 \*\*\*  $p < 0.001$   
 ns = not significant  
 x = no data

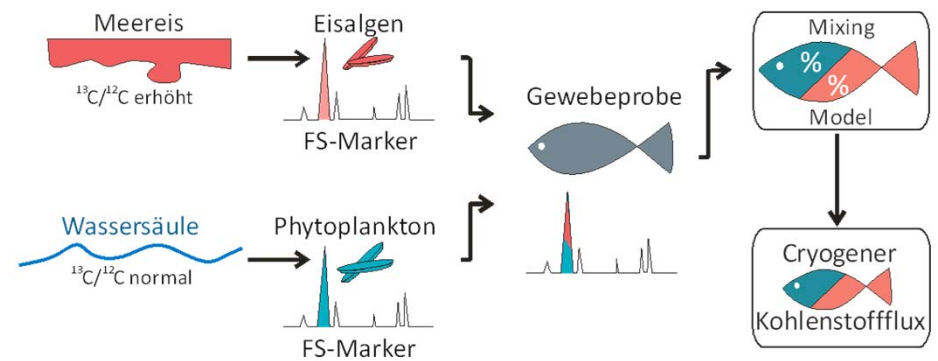


**0-3000m**  
 Error Bars: S.E.

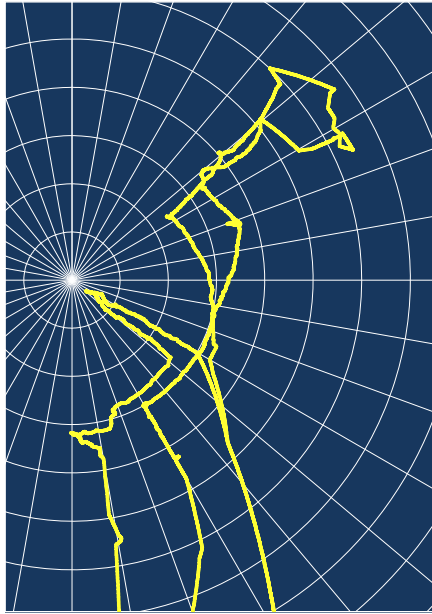
# How design?



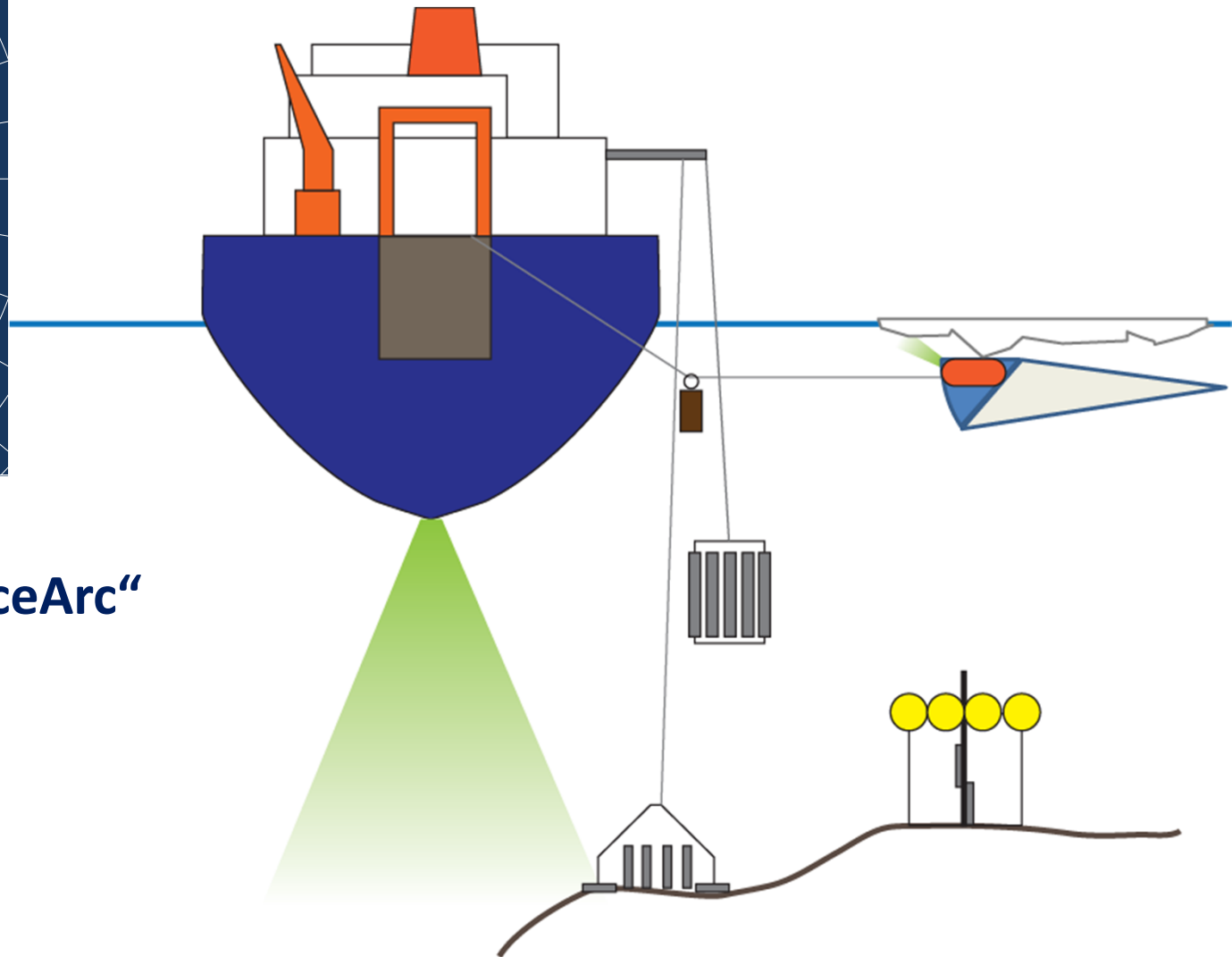
## Biomarkers / tracers



# Multi-disciplinary surveys

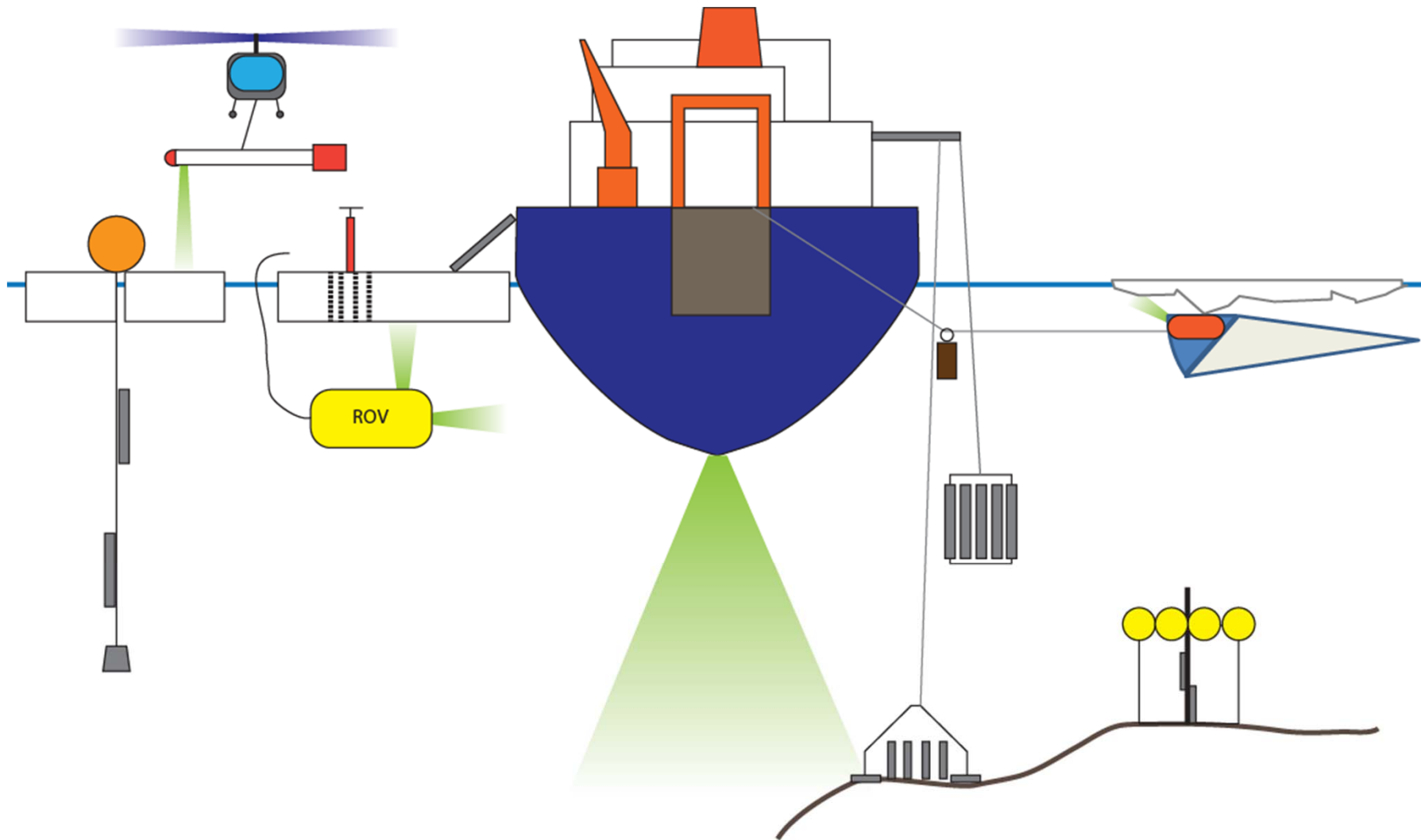


ARK XXVII/3 "IceArc"

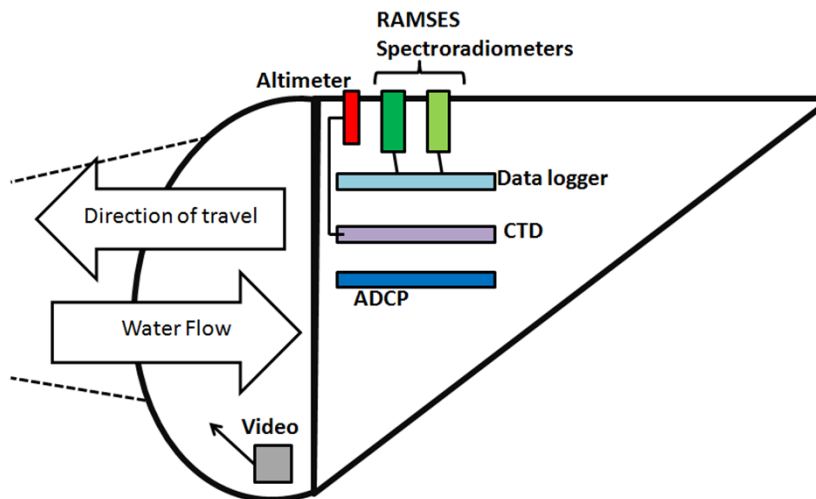
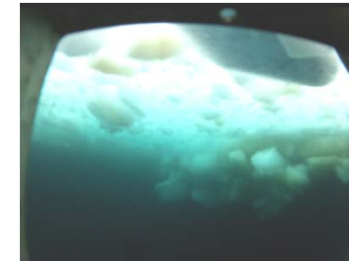
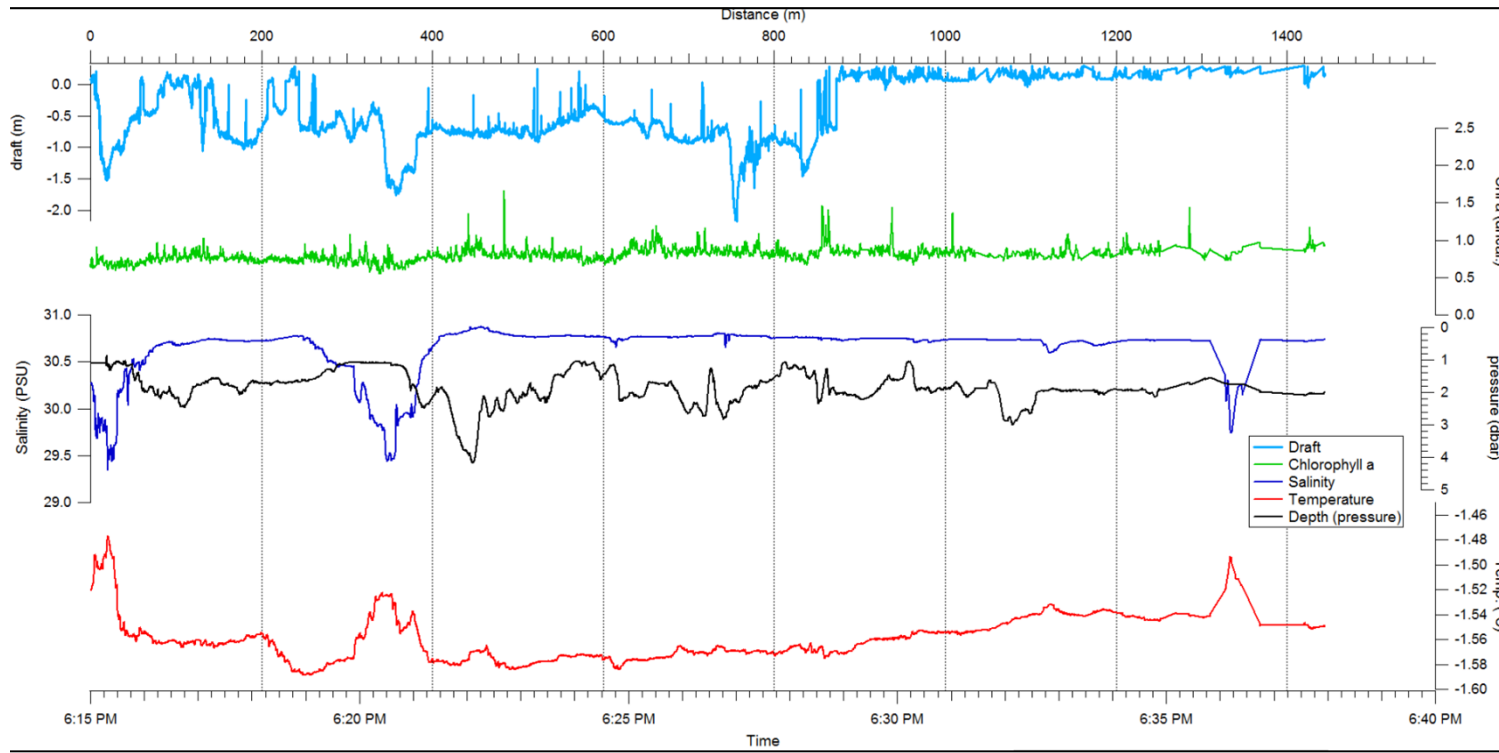




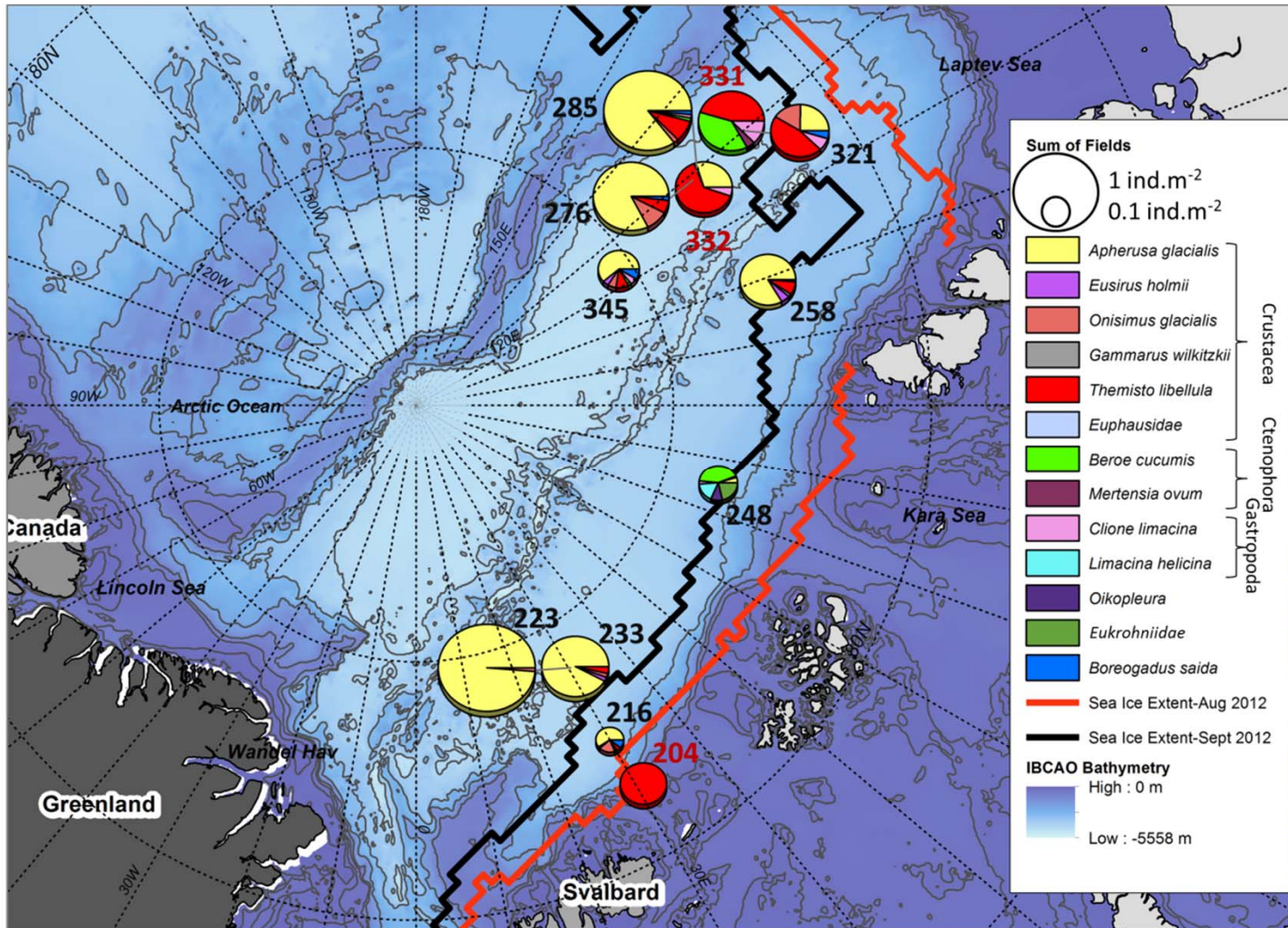
# Multi-disciplinary surveys



# Linking data



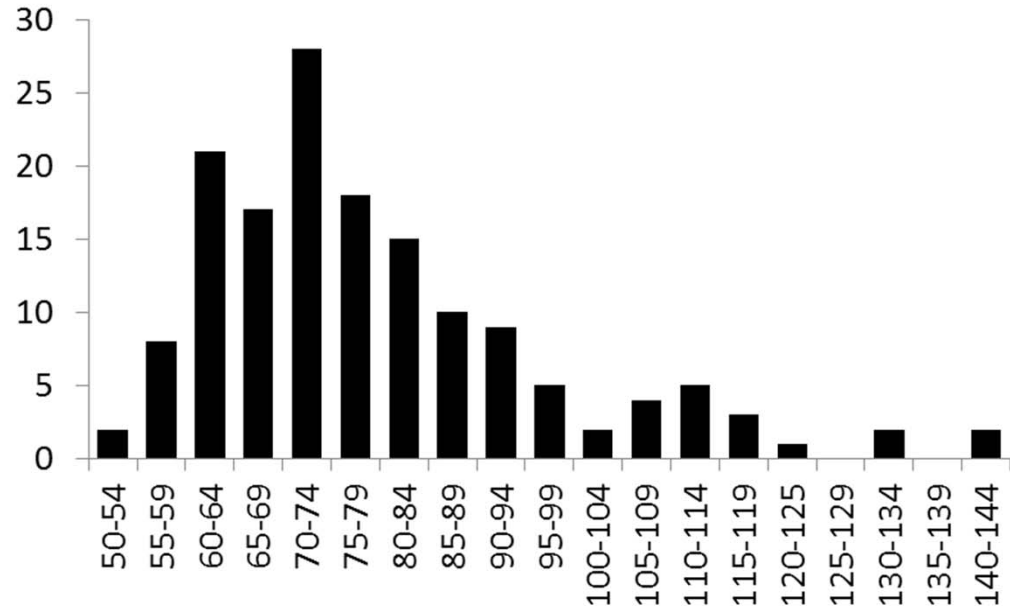
# First glimpse at Arctic under-ice communities



Species composition at the first 12 SUIT hauls during ARK XXVII/3.

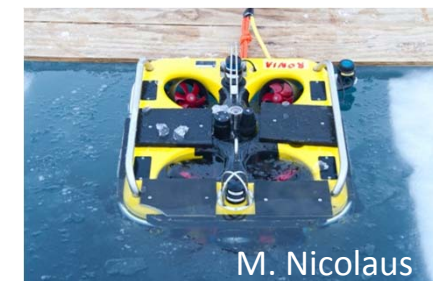
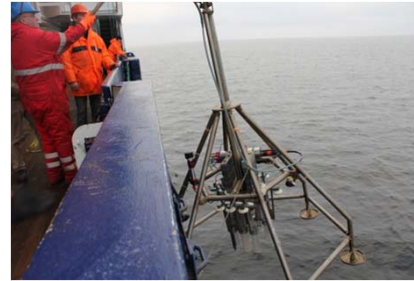
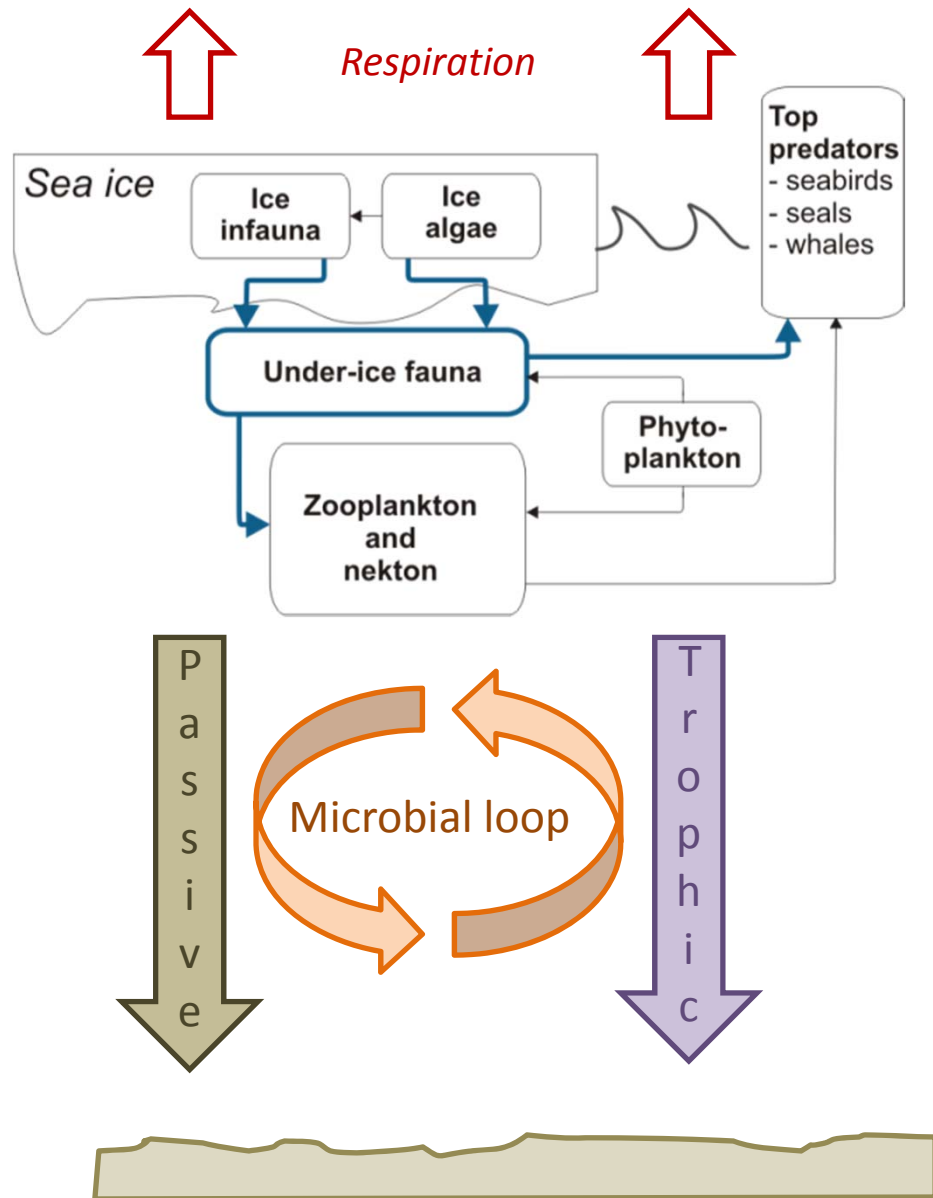


# Polar cod





# Pre-design!



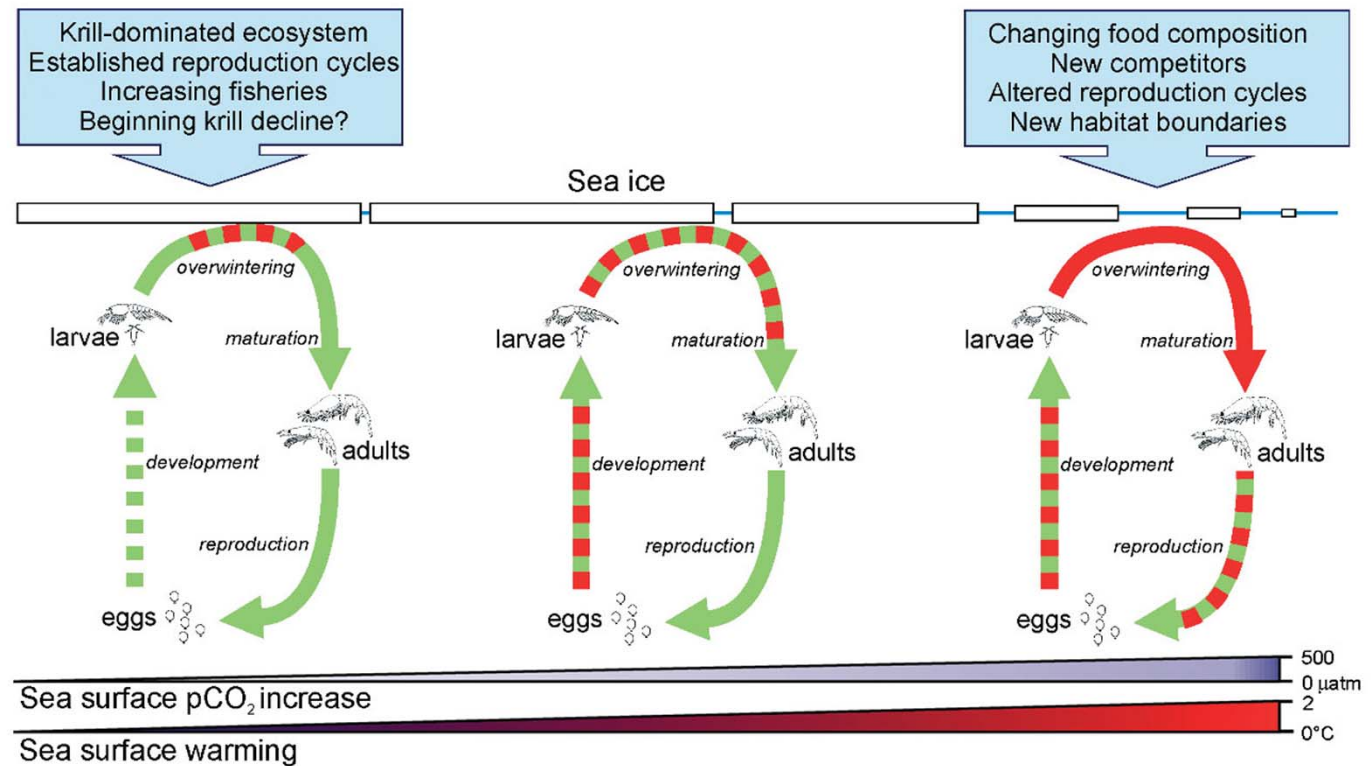
# Towards a EU research strategy

- Pre-designed multi-disciplinary surveys
- Pre-designed data management
- Long-term committment

# Towards a EU research strategy

- Model organisms
- Their role in the food web & carbon cycling
- Bi-polar comparisons

Antarctic krill  
Under scenarios  
Of environmental  
change







*Thank you.*

SUIT on-deck crew, *Polarstern ARK XXVII/3*