

PO 08 33  
1530



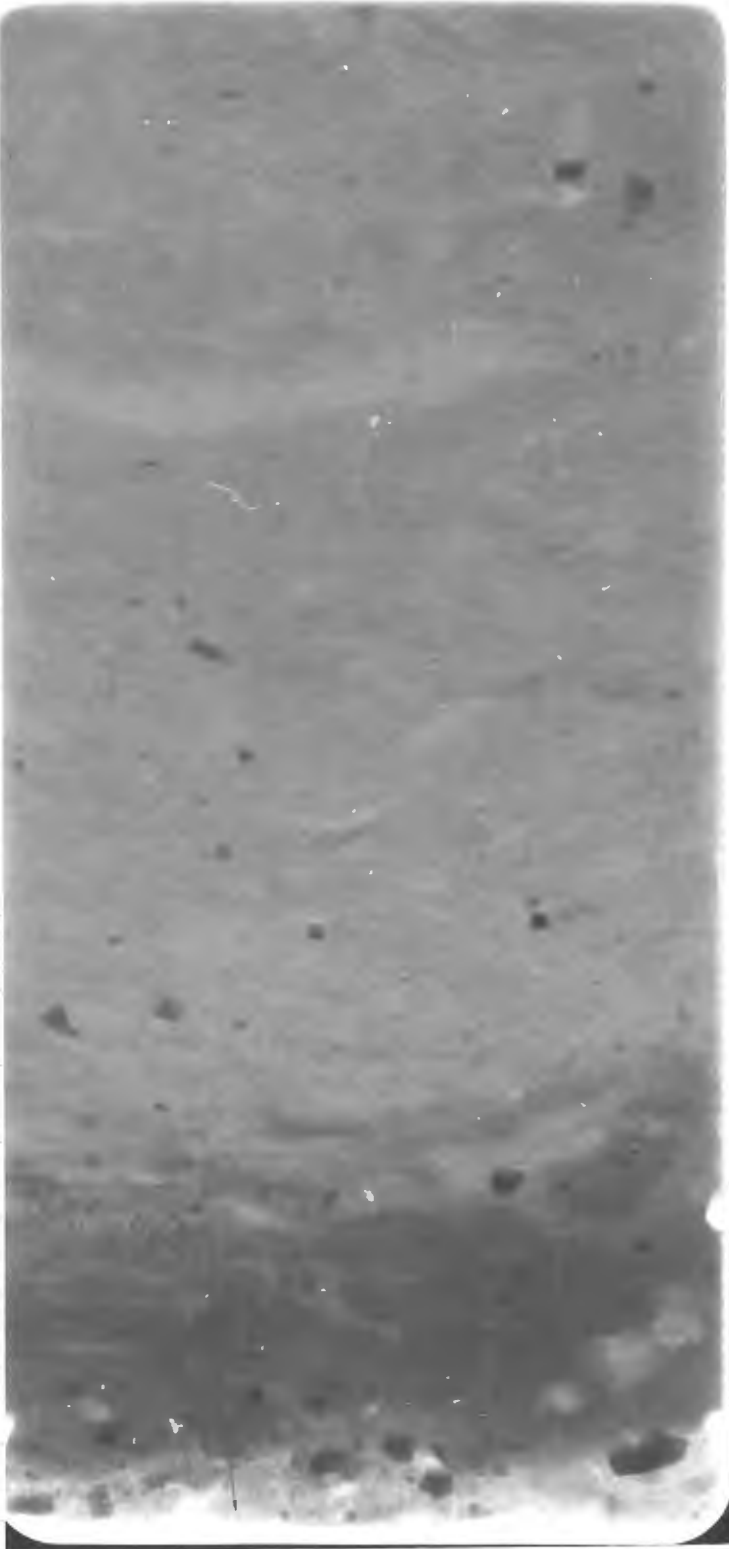
0

5

10

→

20



PO 08 33  
1531



20



25



30

35  
40  
45

50

55

60

65



70

40cm



PO 08 33  
1532



40

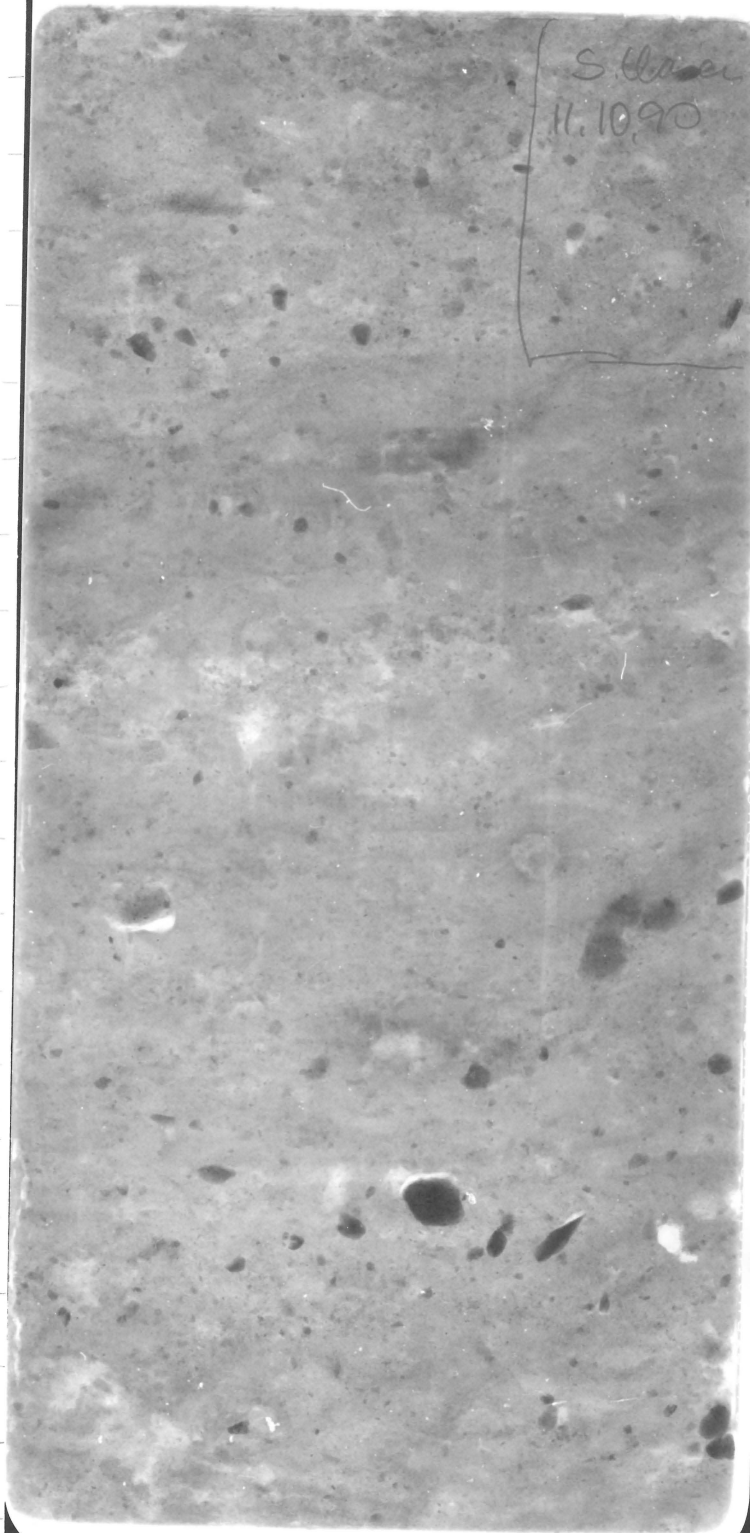
S. H. Green  
11.10.90

45

50

55

60



PO 08 33  
1533



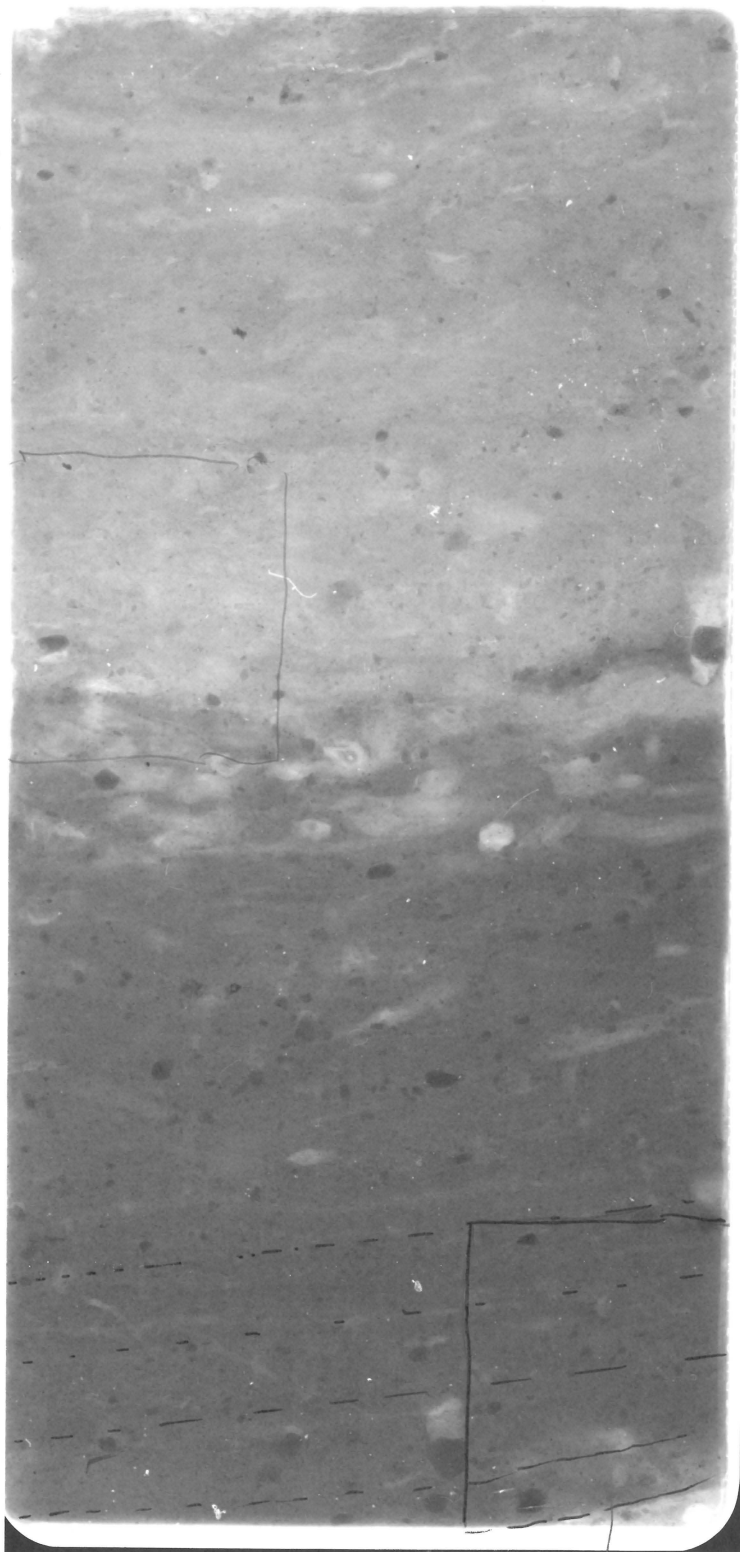
60

65

70

75

80



Close  
1110.90

PO 08 33  
1534



81

80

11a



cutting

25

DOL 4 89-91

90

DOL 4 90-91

DOL 4 91-92

DOL 4 92-93

DOL 4 93-94

~~DOL 4~~ 94-95

95

→ 9596

class  
111090

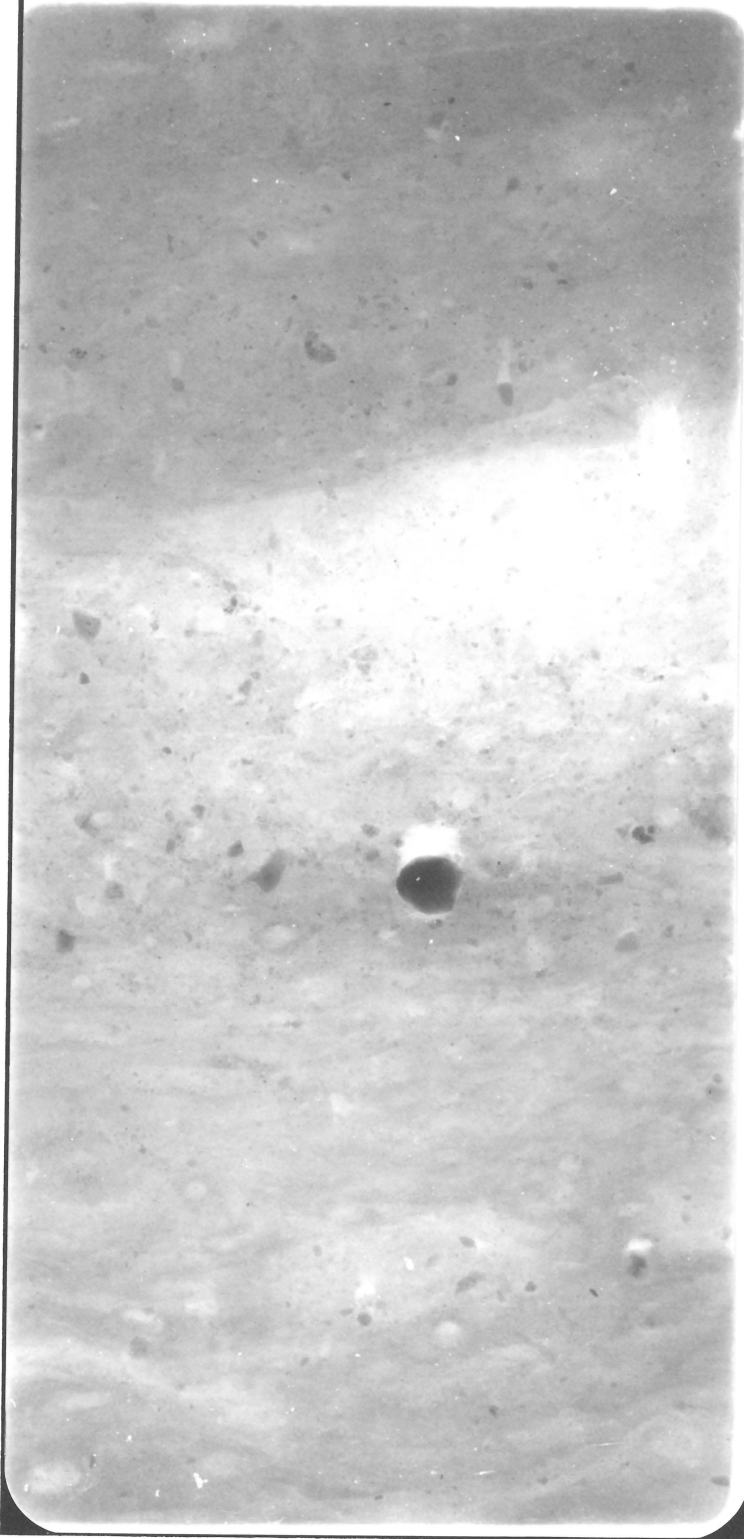
100



PO 08 33  
1535



100

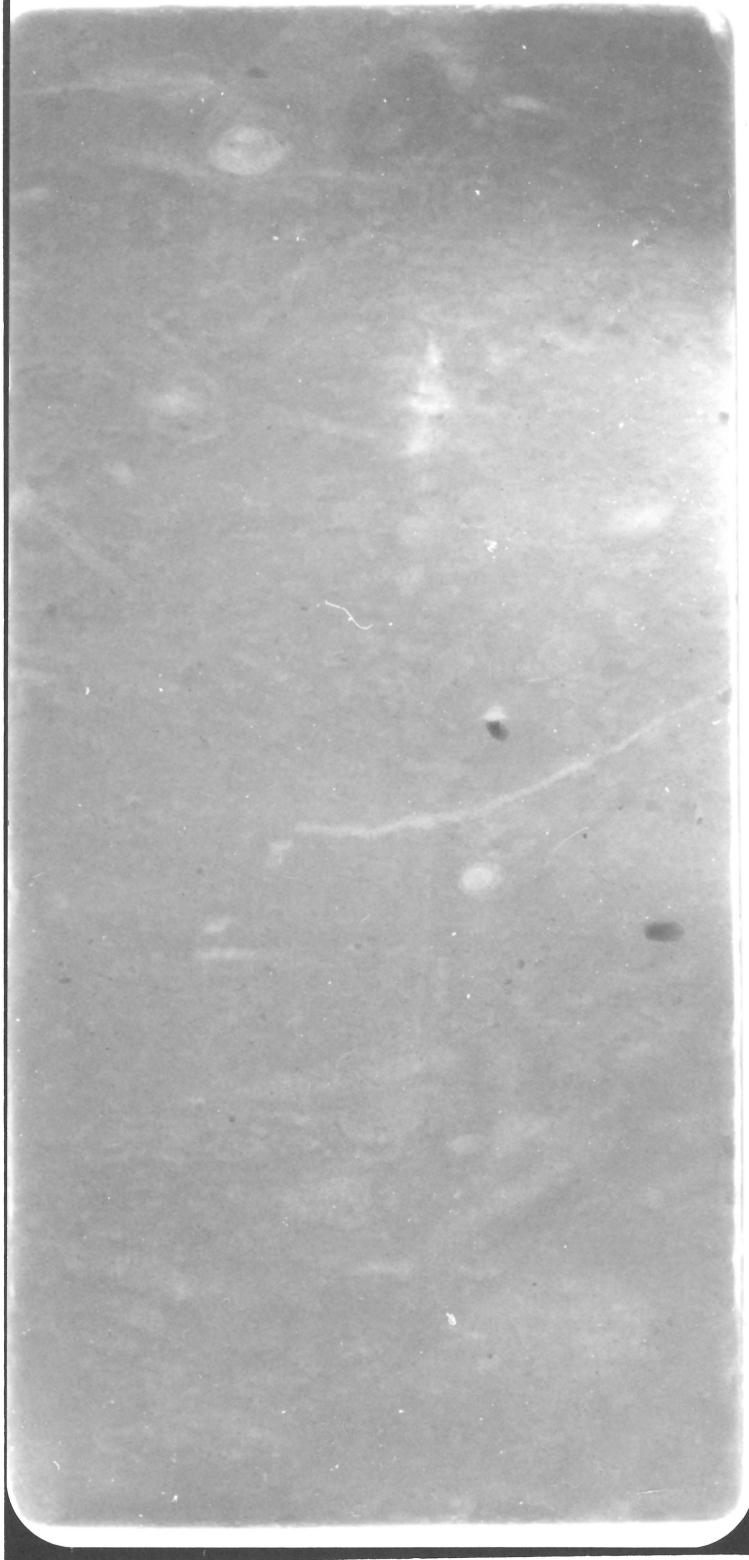


120

PO 08 33  
1536



120



140

PO 08 33  
1537



140



160



PO 08 33  
1538



160



180

PO 08 33  
1539



180

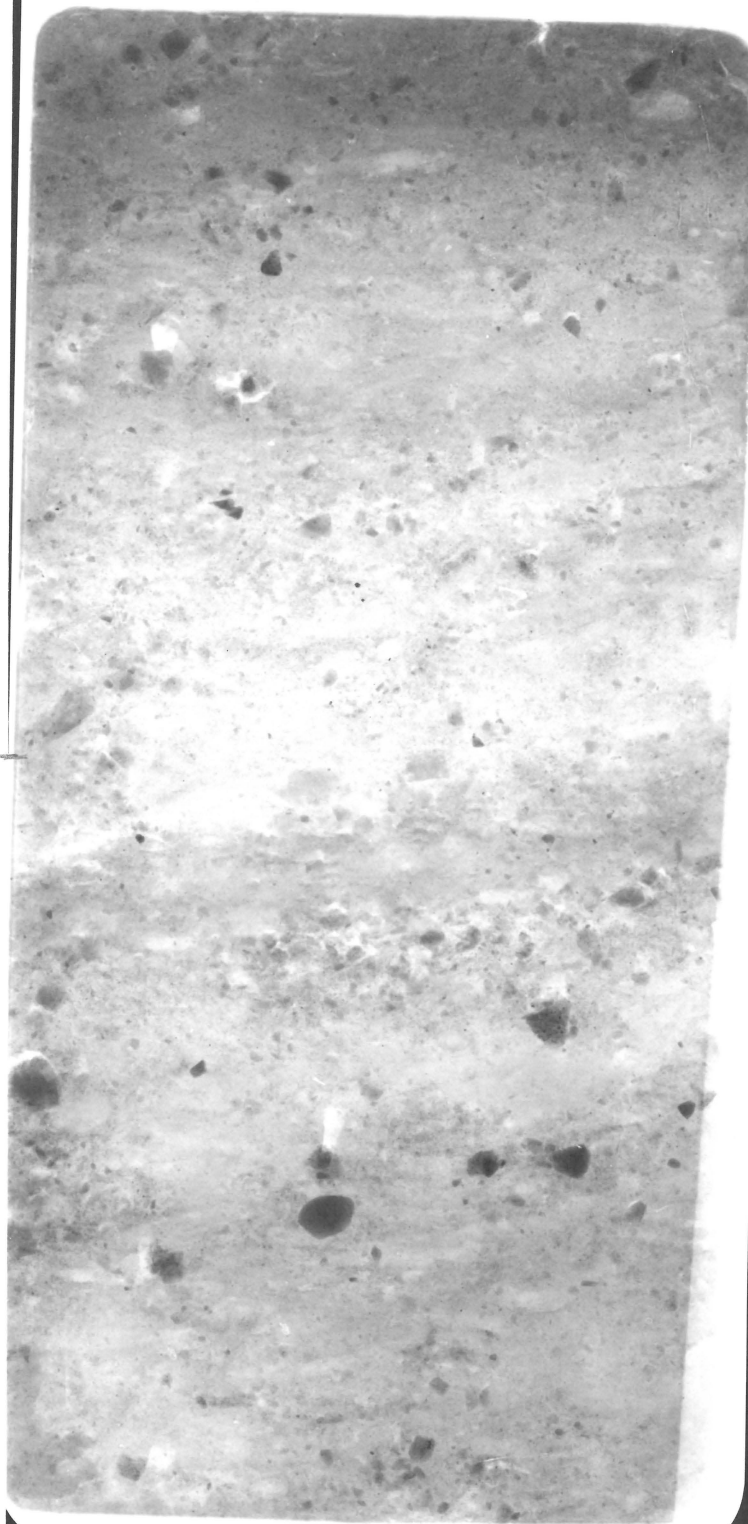


200

PO 08 33  
1540



200

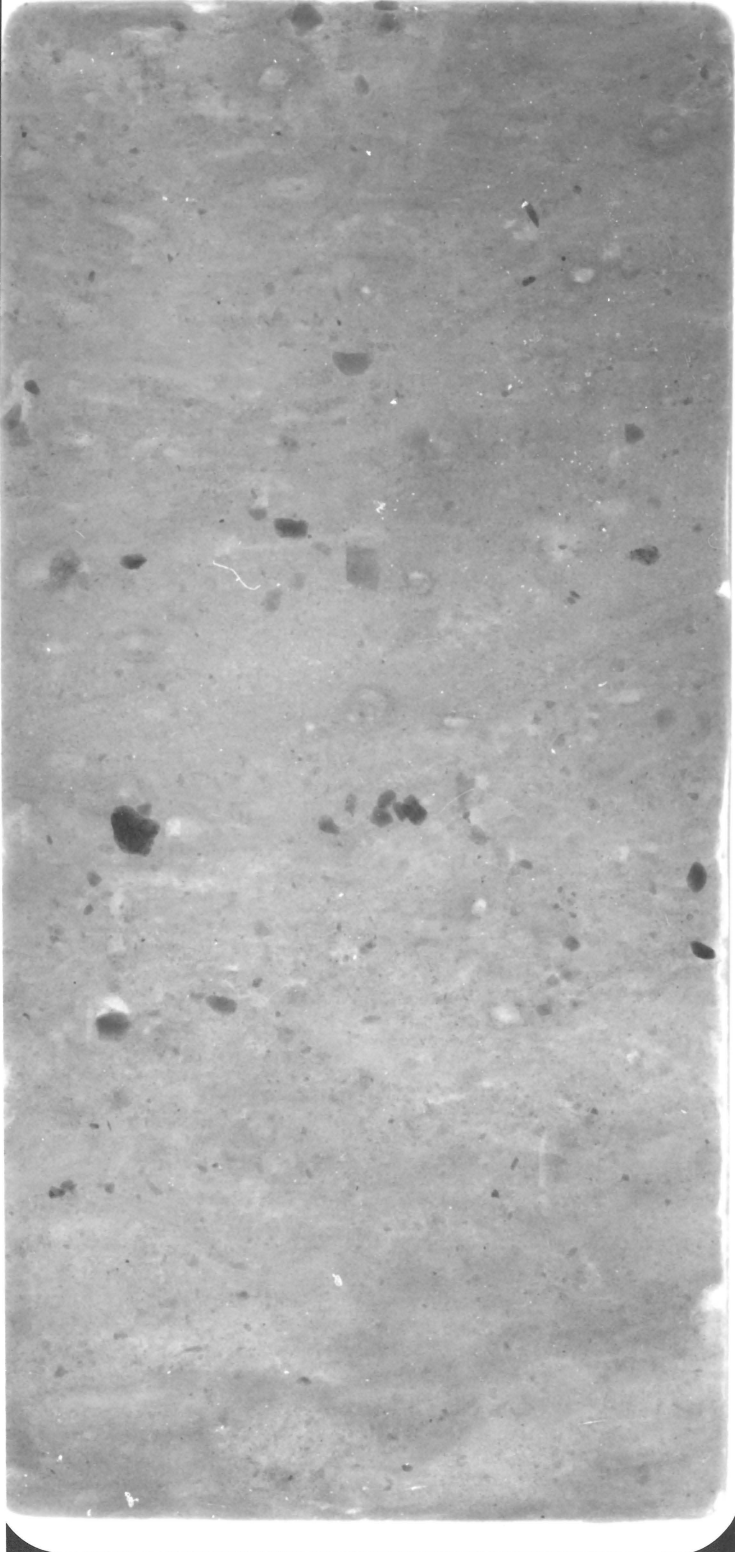


210

PO 08 33  
1541



220



240

PO 08 33  
1542



240



260

PO 08 33  
1543



260

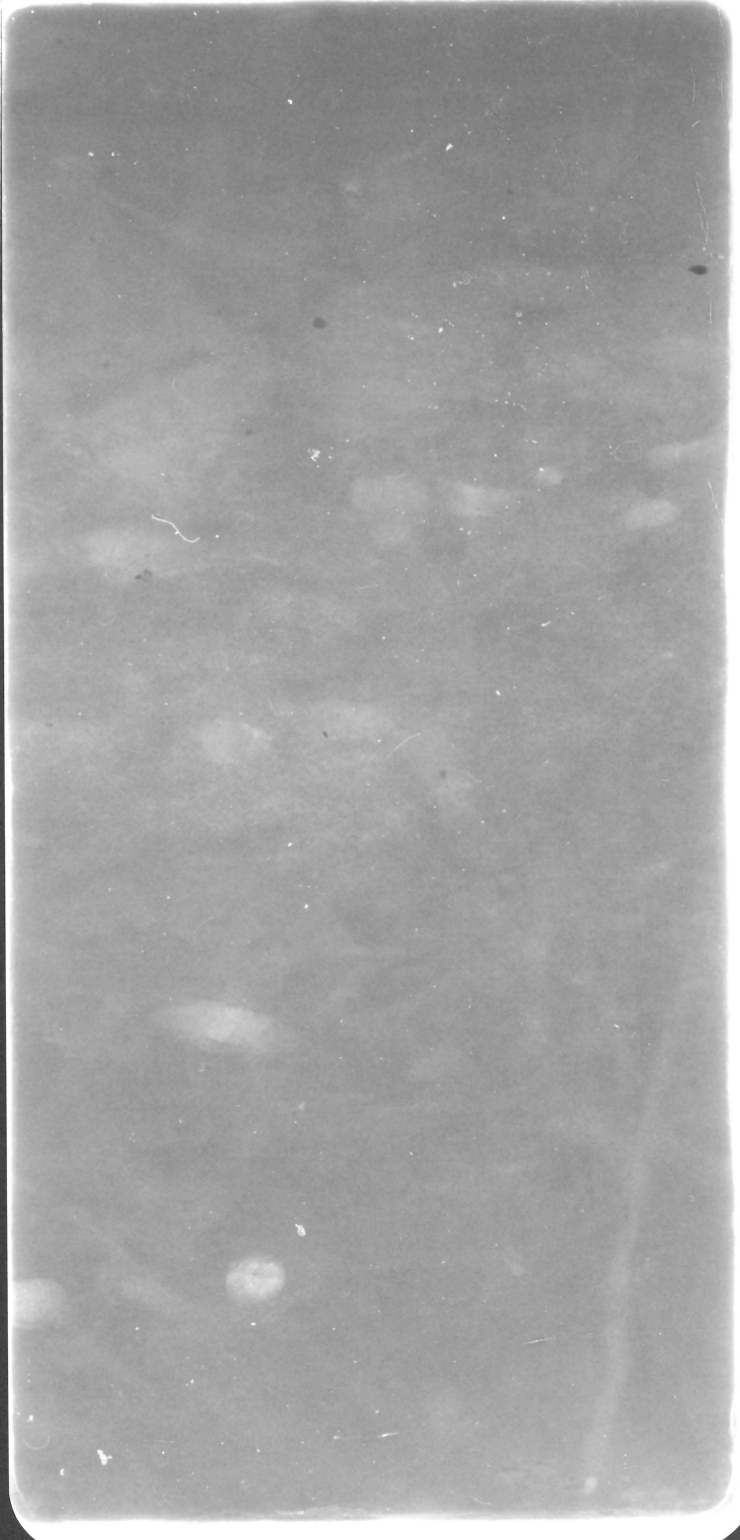


280

PO 08 33  
1544



200

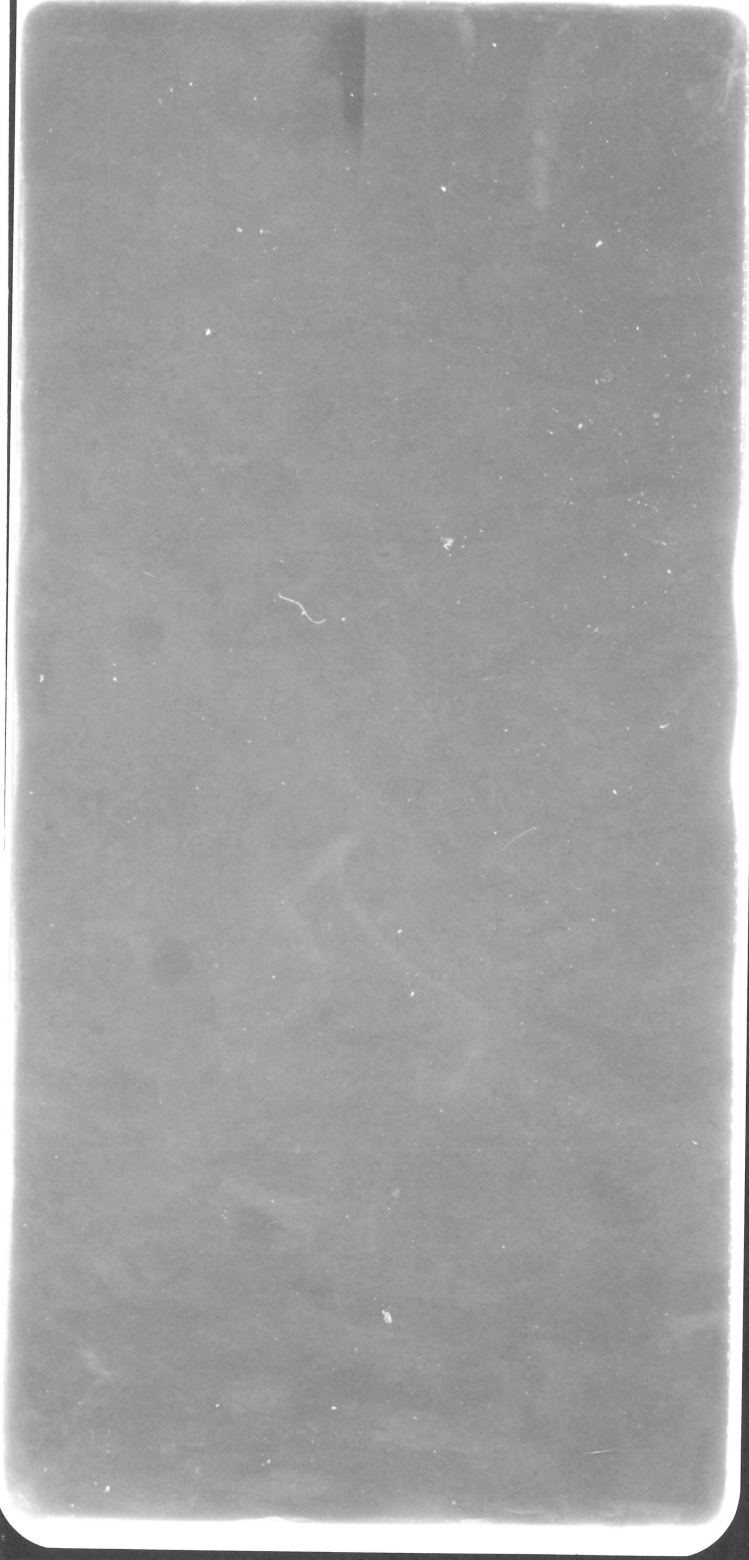


300

PO 08 33  
1545



300



320



PO 08 33  
1546



320



340

PO 08 33  
1547



340

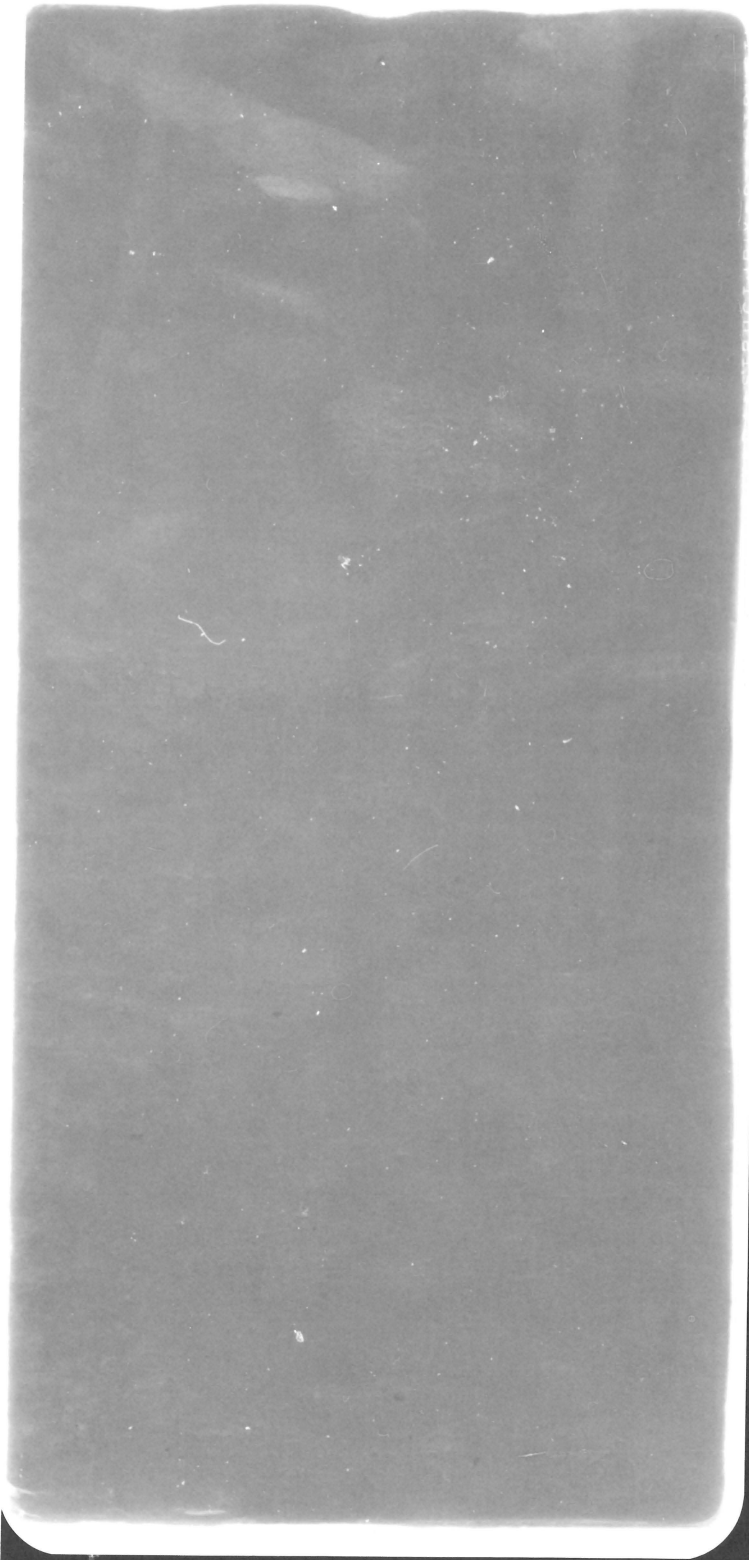


360

PO 08 33  
1548



360



380

PO 08 33  
1549



380



400

PO 08 33  
1550



400



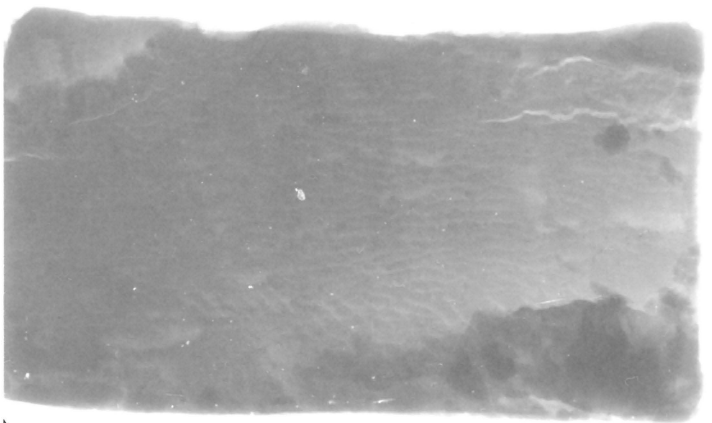
420



PO 08 33  
1552



440



445

Ende Oberes Tor

PO 08 33  
1553



unteres Teil  
445



465 cm

unregelmäßige Schichtdicke  
(schlechte Probenahme)



PO 08 33  
1554



465



485

*Schichtdicke der Probe unregelmäßig*

PO 08 33  
1555



485



505

→ unregelmäßige Schichtdicke

PO 08 33  
1556



505



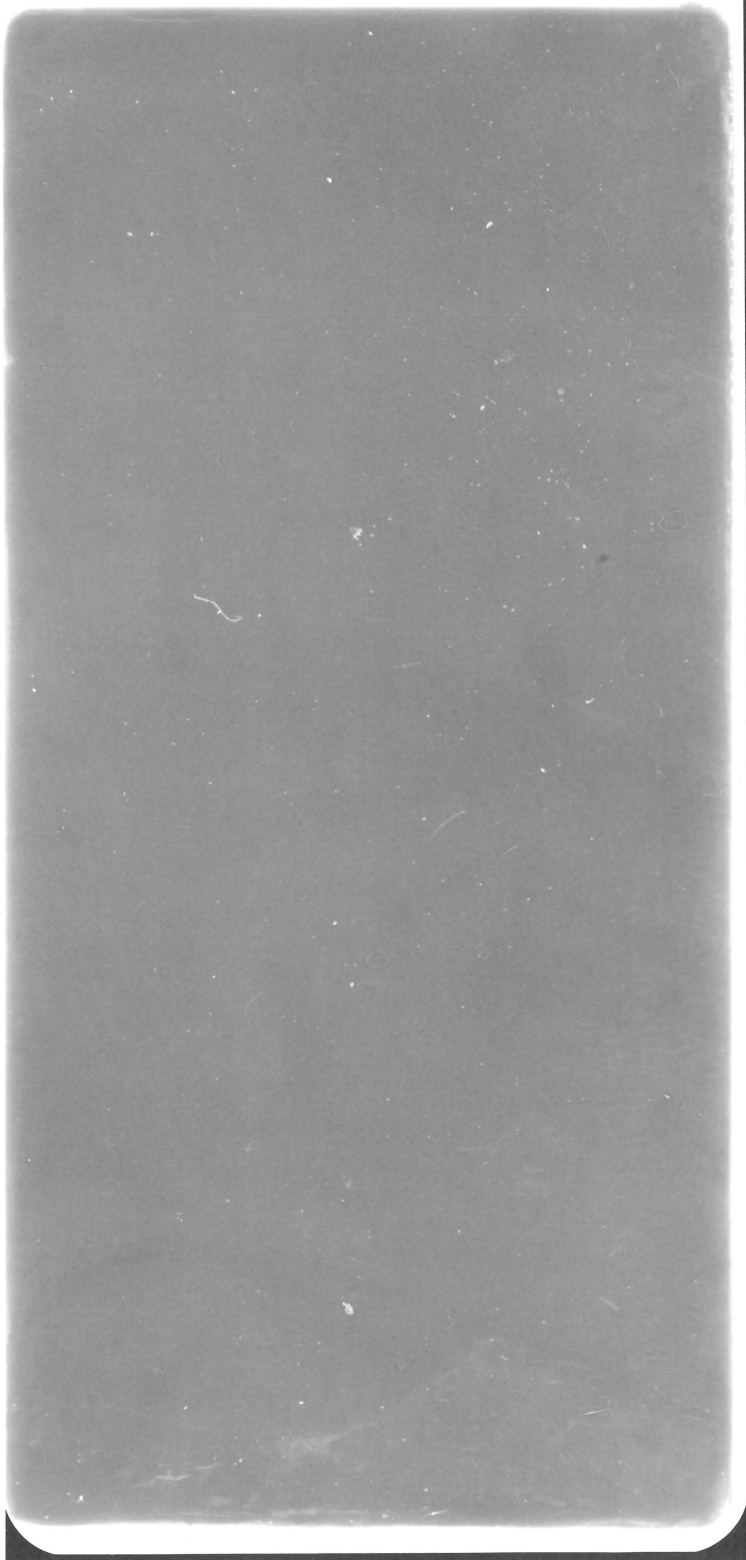
525

→ unregelmäßige Schichtdicke

PO 08 33  
1557



525



545

PO 08 33  
1558



545

565

PO 08 33  
1559



565

585

PO 08 33  
1560



585

605

PO 08 33  
1561



605

625



PO 08 33  
1562



625



645

PO 08 33  
1563



645



665

PO 08 33  
1564



665

685

PO 08 33  
1565



685

705

PO 08 33  
1566



705



725

PO 08 33  
1567



725

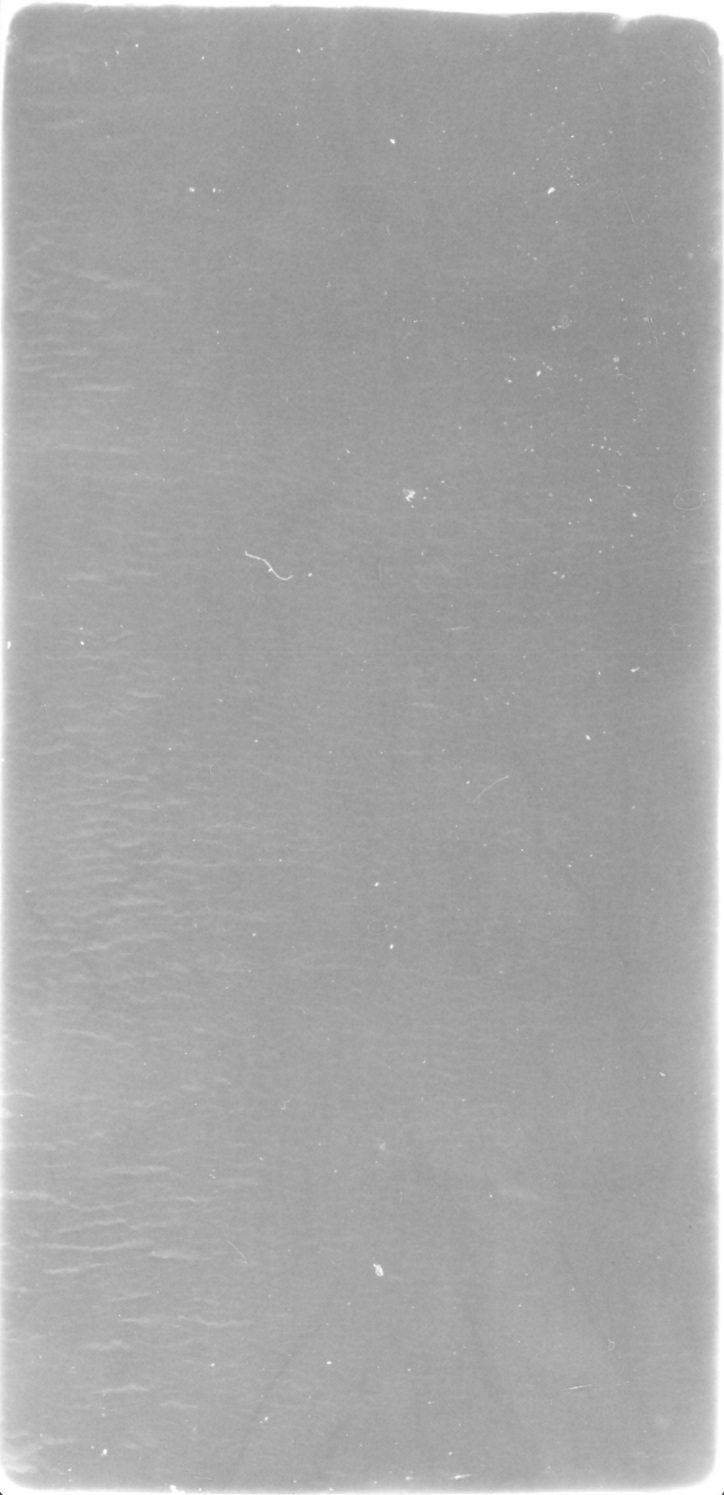


745

PO 08 33  
1568



745

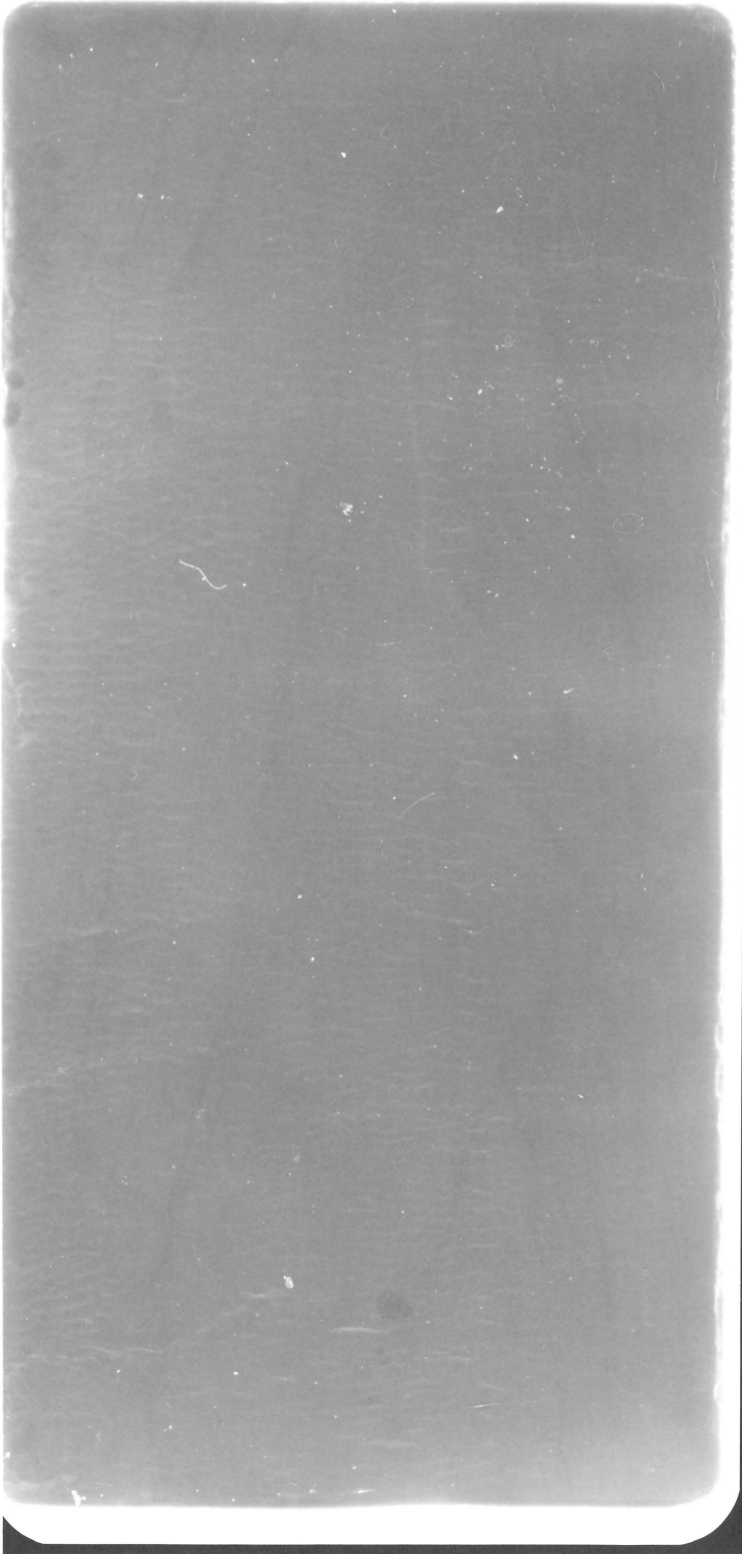


765

PO 08 33  
1569



765



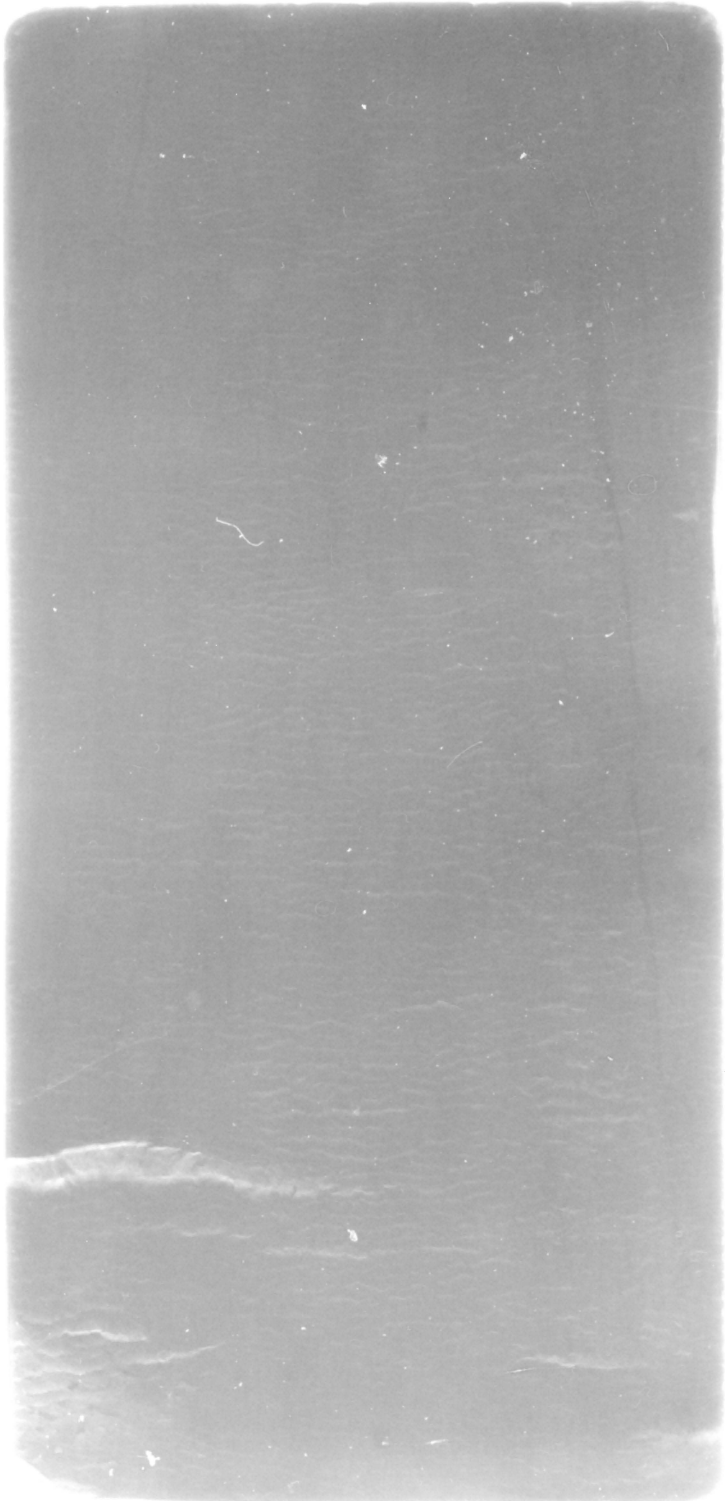
785



PO 08 33  
1570



785



805

PO 08 33  
1571



805



825

