

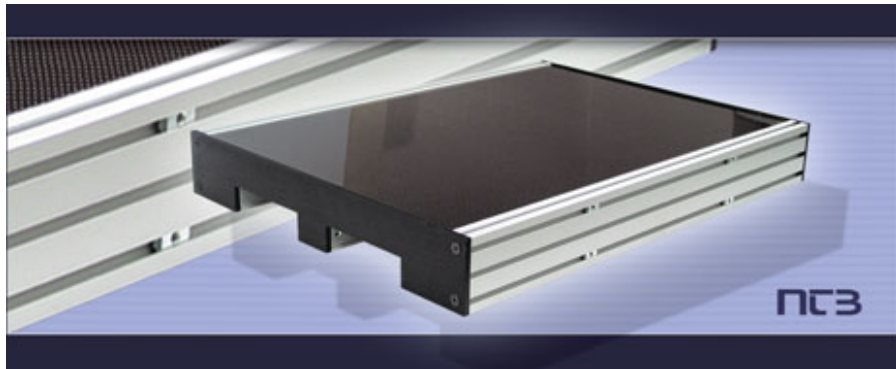
- ▶ Home
- ▶ Video presentations
- ▶ Company
- ▼ Products
 - ▶ Dig. linescan camera
 - ▼ Dig. x-ray scanner
 - ▶ General description
 - ▶ Technical data
 - ▶ U-shape camera
 - ▶ MCU-manipulator
 - ▶ X-ray imaging software
 - ▶ X-ray applications
 - ▶ Contact
 - ▶ Imprint

Products >> Digital x-ray scanner >> General description



■ ■ **HIGH RESOLUTION AND WIDE DYNAMIC RANGE SIMULTANEOUSLY** ■ ■

[Technical data >>](#)



- | | |
|---|--|
| ■ ■ Low operating costs
no film and no processing | ■ ■ Wide dynamic range
12 bit A/D conversion |
| ■ ■ Large scanning area
up to 471 mm x 471 mm | ■ ■ Easy to use
with intuitive software |
| ■ ■ High resolution
12 pixel/mm = 83 μ m | |

■ The new generation of x-ray scanners EZ 240 to EZ 480 allow the user to take high quality digital x-ray images. All scanners of the EZ series offer high resolution and wide dynamic range simultaneously.

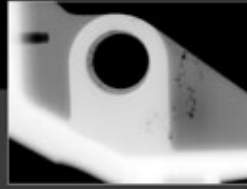
■ The x-ray scanner eliminates the need for film processing. No overhead costs for film, chemicals and waste disposal. No costs for additional equipment like film processor or light box.

■ Acquired images are instantly displayed on the connected PC, where the integrated software provides user-friendly functions to evaluate, process and store the images. The robust mechanics combined with the compact design makes the scanners suitable for laboratory use as well as for industrial applications.

■ Using intern networks and the world wide web allow fast and easy transfer of acquired images to different spheres of competence.

[top of page | print](#)

[Technical data >>](#)



- ▶ Home
- ▶ Video presentations
- ▶ Company
- ▼ Products
 - ▶ Dig. linescan camera
 - ▼ Dig. x-ray scanner
 - ▶ General description
 - ▶ Technical data
 - ▶ U-shape camera
 - ▶ MCU-manipulator
 - ▶ X-ray imaging software
 - ▶ X-ray applications
 - ▶ Contact
 - ▶ Imprint

Products >> Digital x-ray scanner >> Technical data



■ ■ ■ **HIGH RESOLUTION AND WIDE DYNAMIC RANGE SIMULTANEOUSLY** ■ ■ ■

<< General description

■ ■ ■ **Technical Data** ■ ■ ■

Type of scanner	EZ 240	EZ 320	EZ 400	EZ 480
Image size in mm	236 x 236	314 x 314	393 x 393	471 x 471
Image resolution in pixel	2782 x 2782	3710 x 3710	4638 x 4638	5566 x 5566
Dimensions in mm	320 x 360 x 71	400 x 440x71	478 x 520 x 71	556 x 600 x 71
Resolution	12 pixel/mm = 83 µm			
A/D conversion	12 bit = 4096 greylevels			
Integration time per line	1 ms - 1100 ms		2 ms - 1100 ms	
Max. scanning speed	83 mm/s			
Radiation energy range	10 kV - 160 kV (higher energy on request)			
Power supply	110 V / 230 V			
Operating system	Windows NT / 2000 / XP			

<< General description

top of page | print

:: Imprint :: Contact :: Sitemap ::