

Effects of experimental CO₂ leakage on solubility and transport of seven trace metals in seawater and sediment.

Murat V. Ardelan, Eiliv Steinnes, Syverin Lierhagen and Sven Ove Linde

Supporting information

Figure S1

Figure S2

Figure S3

Figure S4

Figure S5

Figure S6

Figure S7

Figure S8

pH, TIC, Tot. Alk and pCO₂

pH and total alkalinity (Talk) were measured regularly with a combined glass electrode with an Ag/AgCl reference electrode (Radiometer), and partial pressure /fugacity of CO₂ (pCO₂), and total inorganic carbon (TIC) were calculated based on the measurements of pH and total alkalinity (Öztürk et al, 2003). The pH electrode was calibrated using NBS buffer solutions at 6 °C. In order to convert measured pH (pH_{NBS}) to pH_{total}, the apparent activity coefficient of H⁺ (f_{H+}) was determined by four-point titration of 50 ml seawater by 15 ml standard acid with normality in the range of 0.008–0.014N HCl. Partial pressure /fugacity of CO₂ (P_{CO2}), TIC was calculated after conversion of pH_{NBS} to pH_{total} (Öztürk et al, 2003).

References

1. Öztürk, M., Vadstein, O., and Sakshaug, E. 2003. The effects of enhanced phytoplankton production on iron speciation and removal in mesocosm phases in a landlocked basin of Hopavågen, Norway. *Marine Chemistry* 84:3-17.

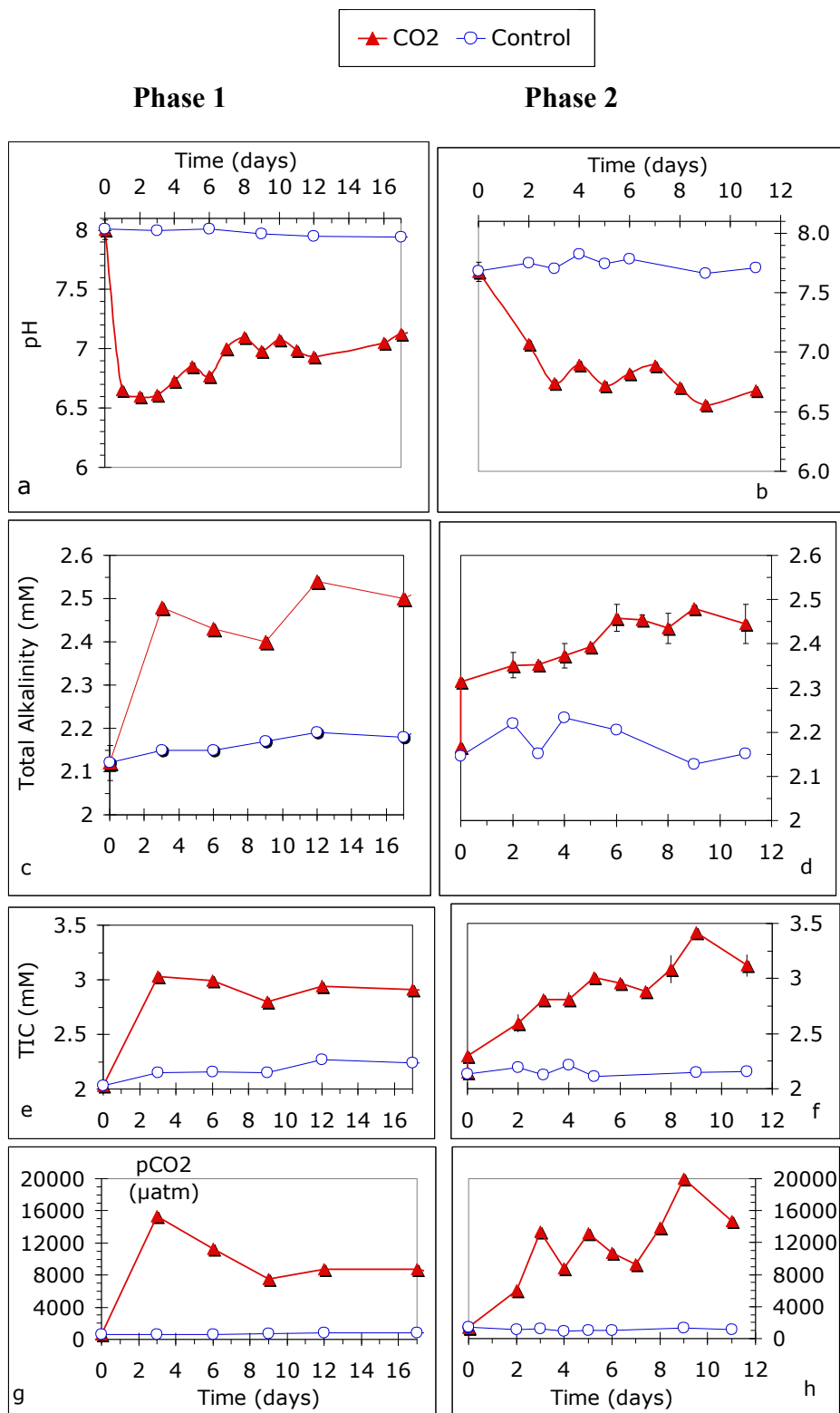


Figure S1.: Variation of pH (a and b), total alkalinity (c and d), Total inorganic carbon (e and f) and partial pressure/fugacity of CO₂ (pCO₂) (g and h) during both phases in CO₂ seepage (full triangles) and in the control (open circles) chambers

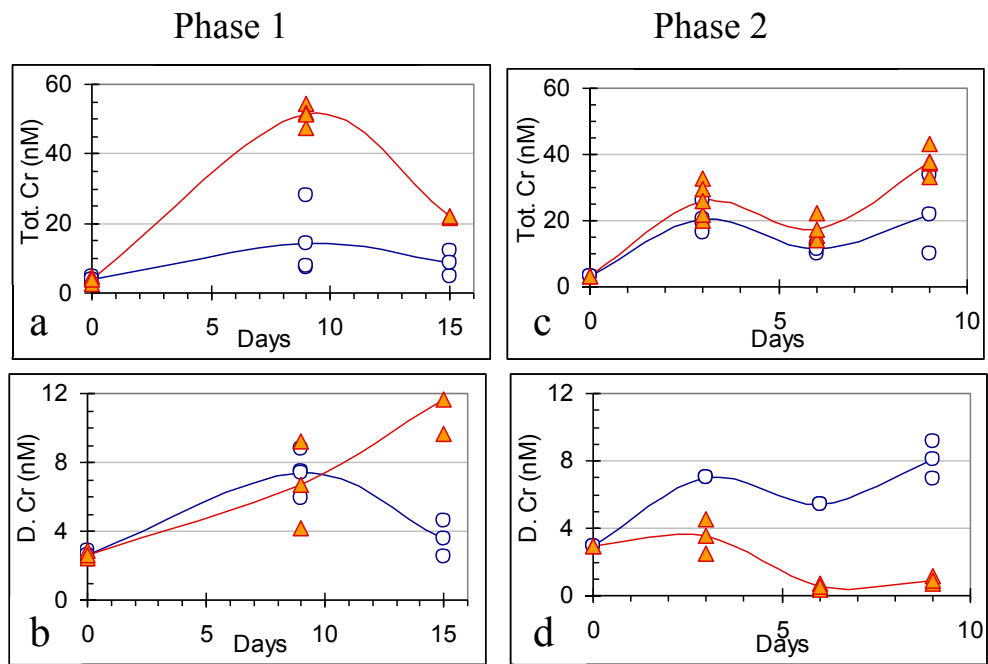


Figure S3: Concentrations of total Cr (Tot. Cr) and dissolved Cr (D.Cr) in water during the first (a, b) and second (c, d) phases in CO₂ seepage (full triangles) and in the control (open circles) chambers.

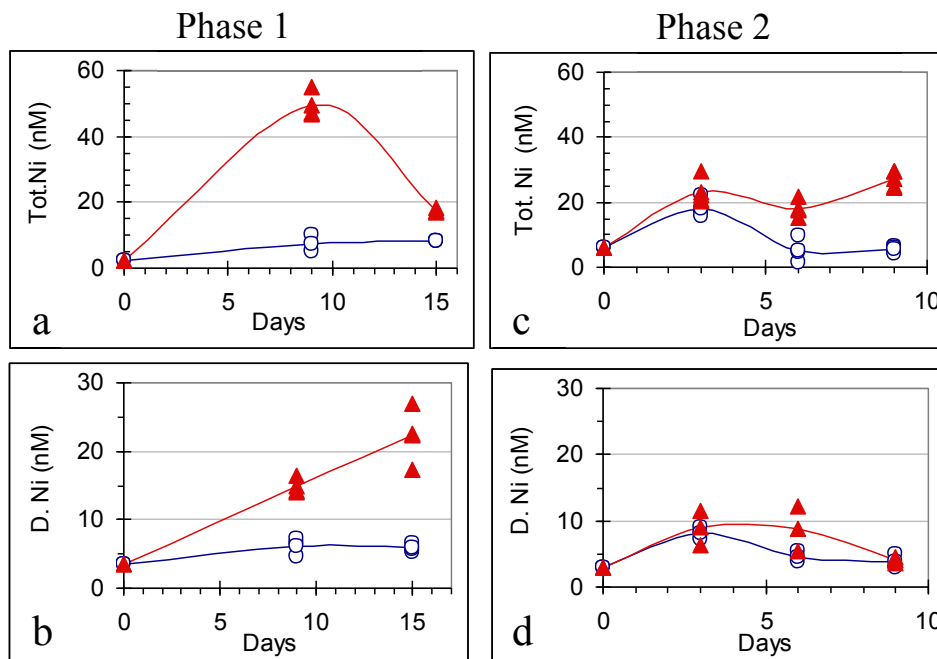


Figure S4: Concentrations of total Ni (Tot. Ni), and dissolved Ni (D.Ni) in water during the first (a, b) and second (c, d) phases in CO₂ seepage (full triangles) and in the control (open circles) chambers.

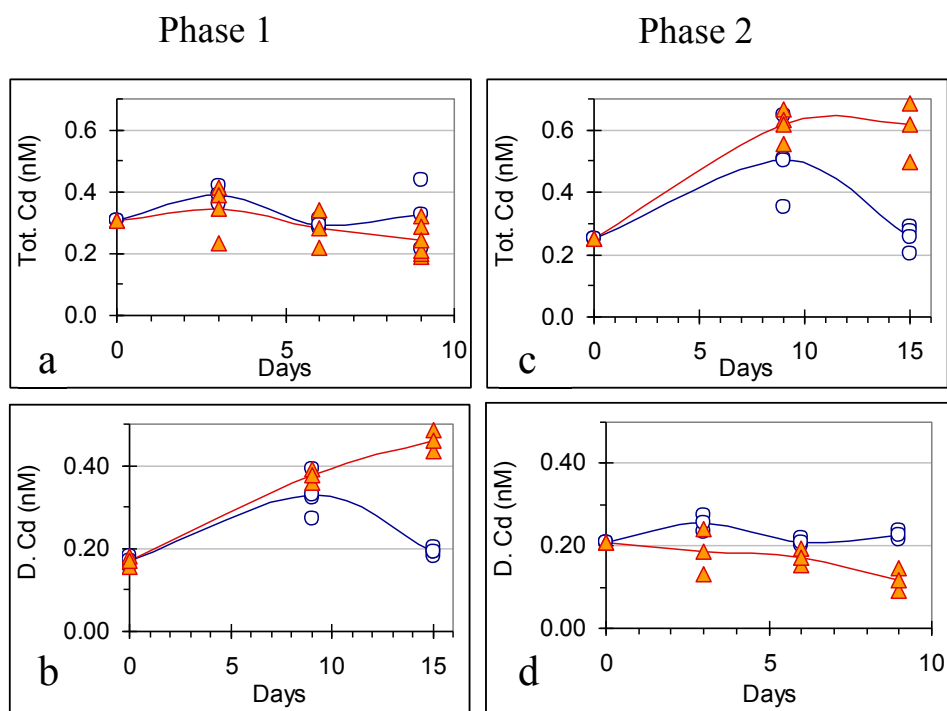


Figure S5: Concentrations of total Cd (Tot.Cd) and dissolved Cd (DCd) in water during the first (a, b) and second (c, d) phases in CO₂ seepage (full triangles) and in the control (open circles) chambers.

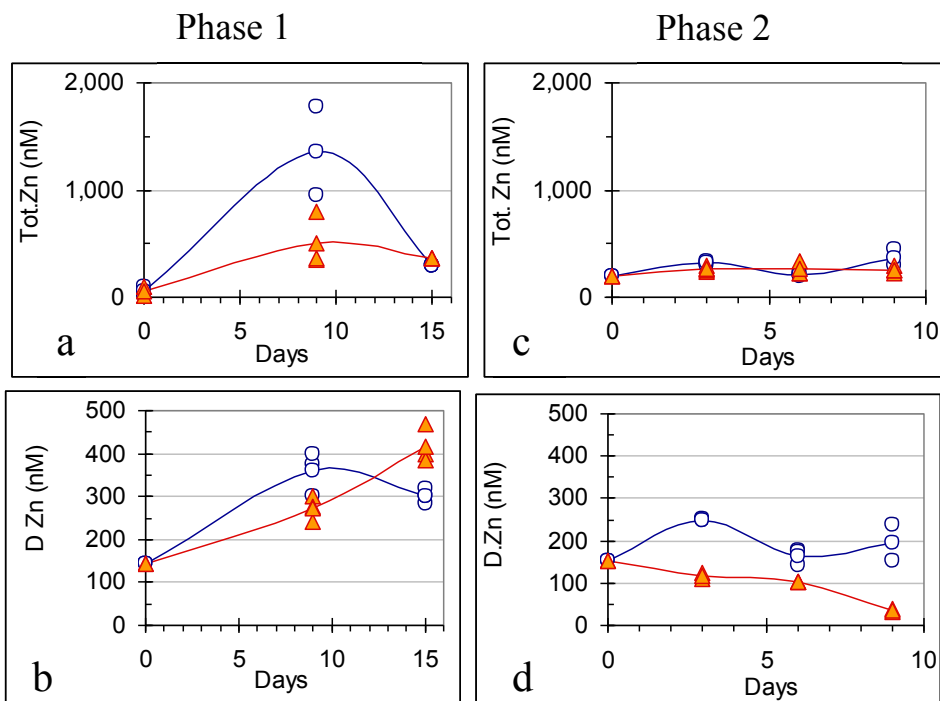


Figure S6: Concentrations of total Zn (Tot.Zn) and dissolved Zn(D.Zn) in water during the first (a, b) and second (c, d) phases in CO₂ seepage(full triangles) and in the control (open circles) chambers.

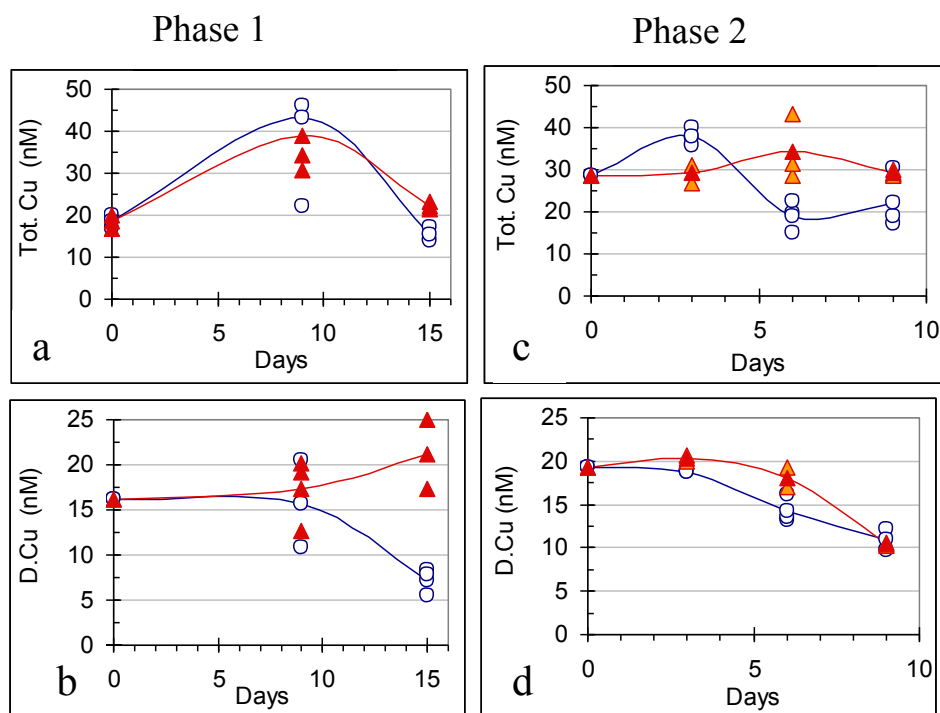


Figure S7: Concentrations of total Cu (Tot.Cu) and dissolved Cu (D.Cu) in water during the first (a, b) and second (c, d) phases in CO₂ seepage (full triangles) and in the control (open circles) chambers.

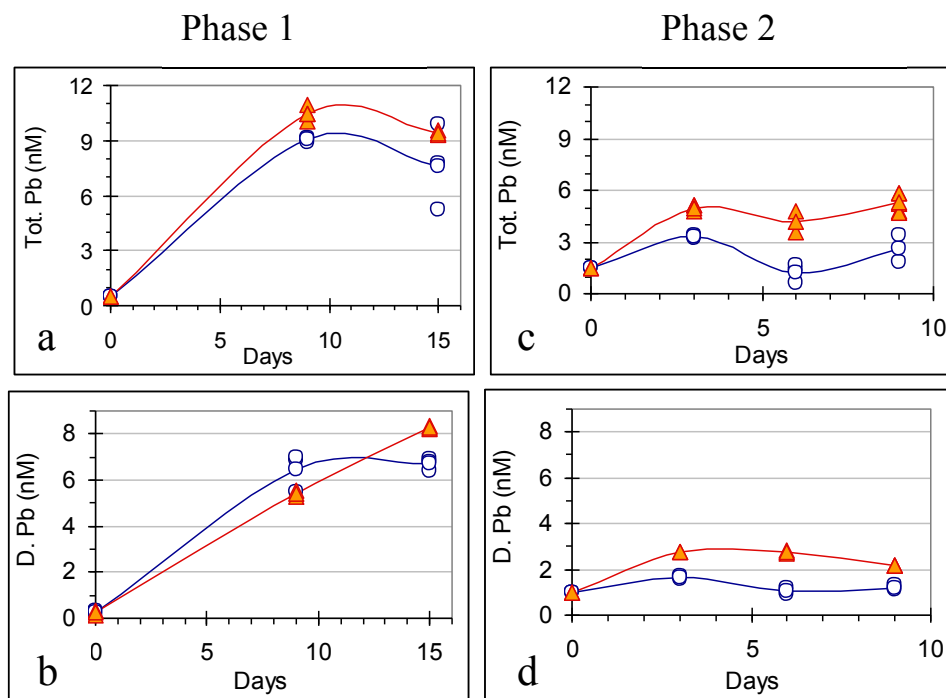


Figure S8: Concentrations of total Pb (Tot.Pb) and dissolved Pb (D.Pb) in water during the first (a, b) and second (c, d) phases in CO₂ seepage (full triangles) and in the control (open circles) chambers.