

BSRN Station Description

Station Manager

Grant Hodgetts

Station scientist currently in charge

Jonathan Tamlyn

WMO Observing Station number 03808

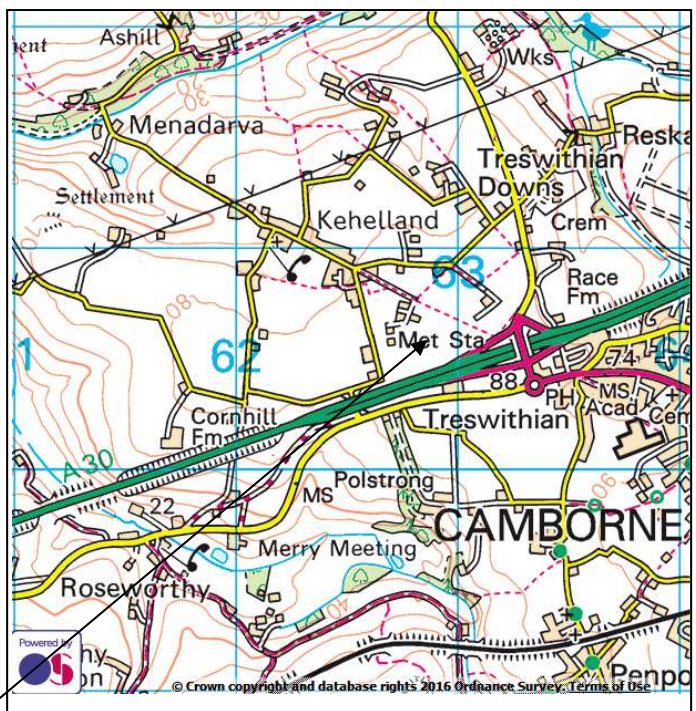


Station Location

Latitude 052 12 43 North
Longitude 005 17 38 West
Elevation 90 metres ASL

Camborne, England.

Situated in open countryside approximately 2 Km north west of the town centre of Camborne. Much of the land within 3 Km is below 100 M except where the land rises to 169M to the South east. Further afield the land to the west and north slopes slightly toward the coast approximately 5 Km distant. To the south the land is generally level with some hills about 160M and to the east the highest hill is 225Metres approximately 7Km away..



Camborne BSRN site

BSRN Station Description

Located on the roof of the Met Office building close to the town of Camborne.

A well exposed site



Google Street View
Surrounded by several meteorological instruments. Ground cover mostly grass.

Climate.

Temperate maritime

10 yearly averages:

Max temp 13.4 °C

Min Temp 8.3 °C

9.5 days of frost.

rainfall 1061 mm.

Sunshine 1664.9

Days of rain 151.2

Wind speed averages 10.8 knots.

Descriptive map of surrounding 2KM Radius (Google Maps)



Located approximately 2 KM to the north west of the town centre of Camborne.

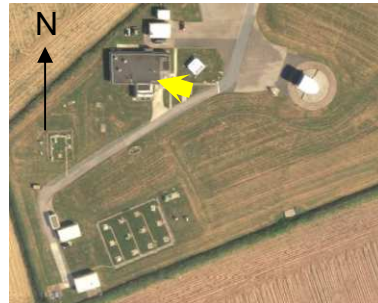
The surrounding area is mostly agricultural. Except to the east and south east which is built up residential and urban type.

The ground within 2 KM is generally undulating flat countryside with a few hills rising to 120 metres above mean sea level.

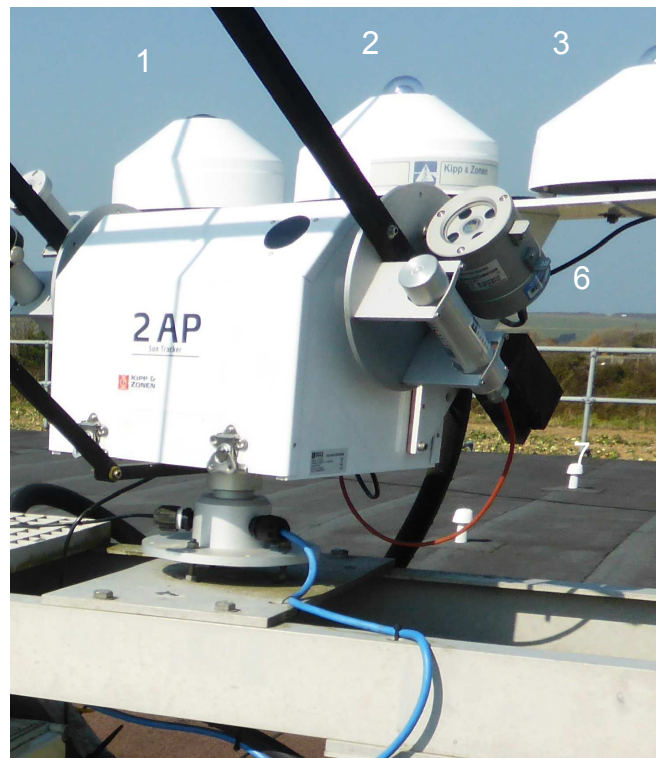
BSRN Site Description

- 1 Kipp & Zonen CRG4 Shaded Pyrgeometer
- 2 Kipp & Zonen CM21 shaded pyranometer
Diffuse Radiation
- 3 Kipp & Zonen CM21 pyranometer Global Radiation
- 4 Kipp & Zonen CHP1 Pyheliometer Direct Irridiance
- 5 Kipp & Zonen CHP1 Pyheliometer with shield
Direct Irridiance
- 6 Middledon Solar SP02 Sunphotometer
- 7 Kipp & Zonen Sunsensor

Instrument location



Description of meteorological instruments



North



North East



East



South



South West



West

BSRN Station Views



North

Roof of building with various aerials



East

Radiosonde balloon shed in centre and Boundary Layer Wind Profiler (White) Just visible on the left centre.



South



West

Showing the mushroom aerial used for Radiosonde signal reception and conical aerial for GPS Vapour measurement. The second bench has Cimel Sunphotometer, Kipp & Zonen Pyranometer (CM11) and Sunshine duration sensor (CSD 3)

Additional Observing Programmes

UV Measurement for Health Protection England (Health Protection Agency)

Full Meteorological measurements

Radiosonde soundings are routinely launched at Camborne twice daily at 2315 UTC and 1115 UTC.

Boundary Layer Wind Profiler

UK monitoring and nuclear emergency response system

GPS Water Vapour