

# Surface T/S Data RV "Heincke"

## HE330

### Data Processing Report

#### Contents

<b>1</b>	<b>Introduction</b>	<b>1</b>
<b>2</b>	<b>Workflow</b>	<b>1</b>
<b>3</b>	<b>Cruise details</b>	<b>2</b>
<b>4</b>	<b>Sensor</b>	<b>2</b>
<b>5</b>	<b>Processing Report</b>	<b>3</b>

Contact:

Gerd Rohardt

Alfred-Wegener-Institute

Am Handelshafen 12, D-27570 Bremerhaven, GERMANY

Mail: [info@awi.de](mailto:info@awi.de)

Processing Agency:

FIELAX

Schleusenstr. 14, D-27568 Bremerhaven, GERMANY

Mail: [info@fielax.de](mailto:info@fielax.de)

Ref.: HE330_TSG.pdf	Vers.: 1	Date: 2016/04/11	Status: final
---------------------	----------	------------------	---------------

# 1 Introduction

This report describes the processing of raw data acquired by the thermosalinograph on board RV "Heincke" during expedition HE330 to receive cleaned up and drift corrected salinity data.

# 2 Workflow

The different steps of processing are visualized in Figure 2. Unvalidated data of sensor, internal and external temperature are extracted from the DAVIS SHIP data base (<https://dship.awi.de>) in a 1-second interval for cruises from 2009 to 2014. The Salinity was calculated by applying the Practical Salinity Scale 1978 (PSS-78). Furthermore the sound velocity was derived by using the Del Grosso equation.

As first step, a basic cleanup was performed to remove missing or flagged data. Since the salinity measurements in coastal areas (e.g. rivers and ports) are less reliable, measurements in a buffer of 2 nautical miles (NM) along the coast are filtered. In the norwegian area (fjords) the buffer is set to 200 meters (0.108 NM). After the exclusion of data outside the speed interval of 0.5 kn to 15 kn, the salinity is driftcorrected with lab calibration data. In the next processing step the difference between the external and internal temperature is taken to identify an improper usage of the thermosalinograph. This filter is ignored if more than 90% of the data would get removed. After despiking, a visual screening is performed to enhance the data quality. In the last step the temporal resolution is reduced to 5-minutes-means.

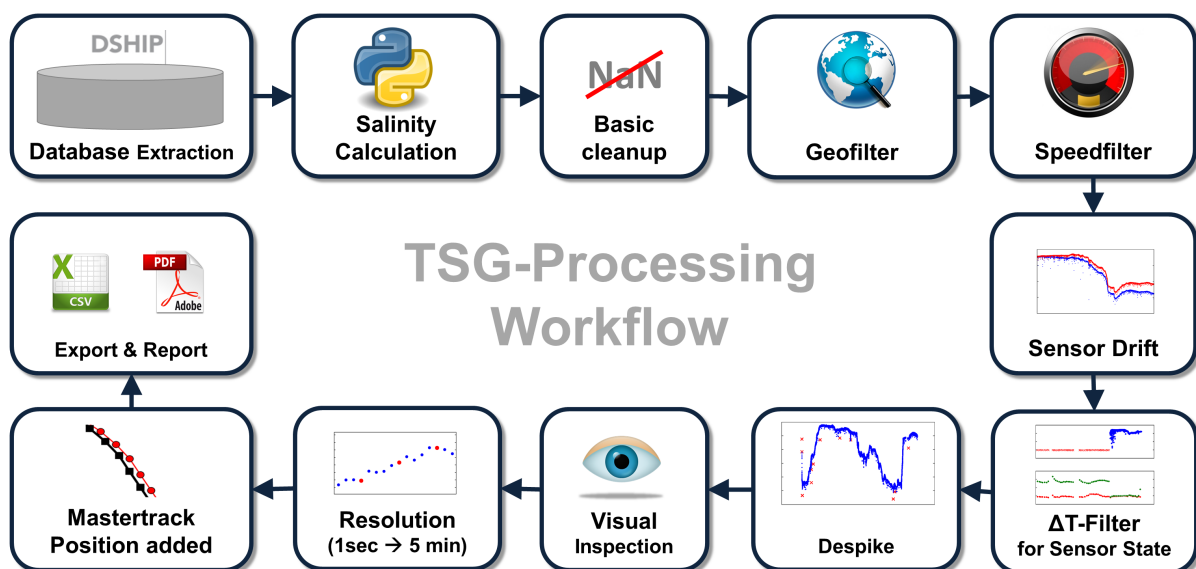


Figure 1: Workflow of TSG data processing

### 3 Cruise details

Vessel name      RV "Heincke"  
 Cruise name     HE330  
 Cruise start     26.06.2010 Bremerhaven  
 Cruise end       08.07.2010 Bremerhaven  
 Cruise duration  12 days

### 4 Sensor

Thermosalinograph:   Seabird SEACAT SBE21 (SN: 3333)  
 External Temperature:  SBE38

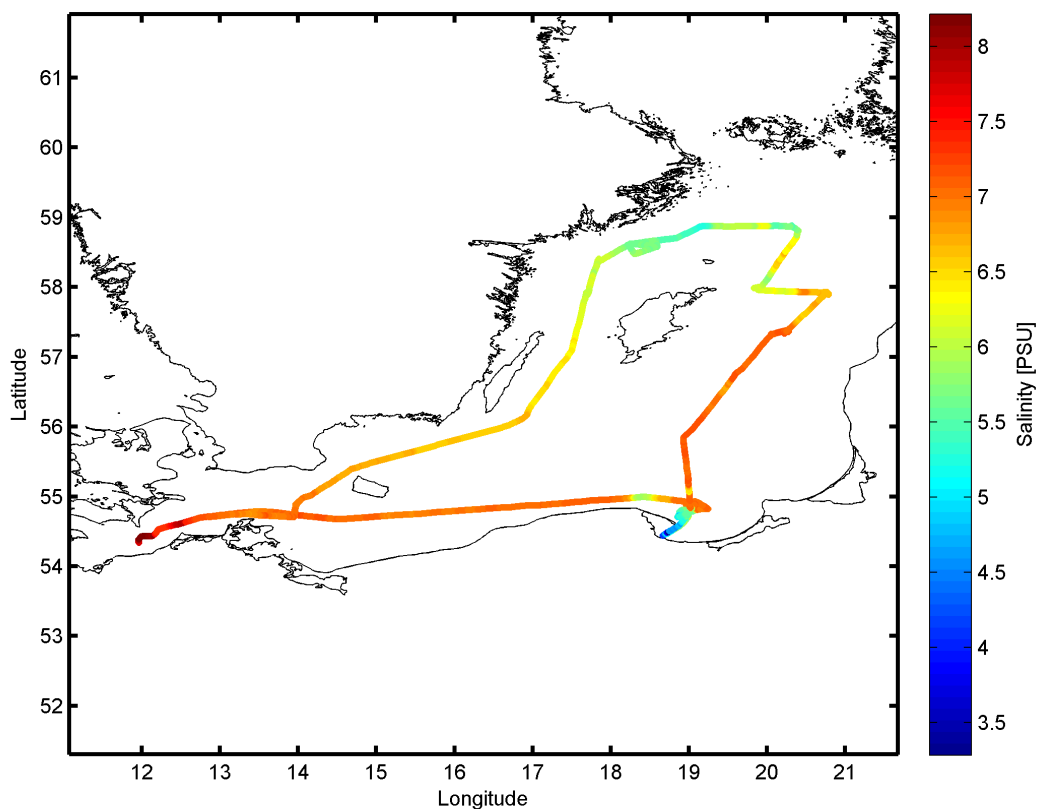


Figure 2: Cruisemap of HE330.

## 5 Processing Report

### Database Extraction

Data source	DSHIP database (dship.awi.de)
Exported values	1036801
First dataset	2010-06-26T00:00:03 UTC
Last dataset	2010-07-08T00:00:00 UTC

### Automatic Validation

The following thresholds were applied for the automatic flagging of the position data:

Min. speed	Minimum 0.5 kn between two datapoints.
Max. speed	Maximum 15 kn between two datapoints.
GeoBuffer	0.1080 NM around Norway, 2 NM anywhere else
Temperature	Maximum T-difference of 5 K.

### Flagging result

Filter	Data left (abs.)	Data left (rel.)	Data removed (abs.)	Data removed (rel.)
Raw data	1036801	100 %	—	—
Basic	949055	91.54 %	87746	8.46 %
Geo	908714	87.65 %	128087	12.35 %
Speed	704455	67.95 %	332346	32.05 %
Temperature	704455	67.95 %	332346	32.05 %
Despike	681963	65.78 %	354838	34.22 %
Manual	678139	65.41 %	358662	34.59 %
5-min-Mean	2932	0.28 %	1033869	99.72 %

### Sensordrift

Last calibration	07.01.2009
Current calibration	19.05.2011
Start of deployment	09.03.2009
End of deployment	03.05.2011
Scaled drift	-5.4904e-004 [PSU/month]
Minimal offset	8.5718e-003 [PSU]
Maximal offset	8.7727e-003 [PSU]

## Process evolution

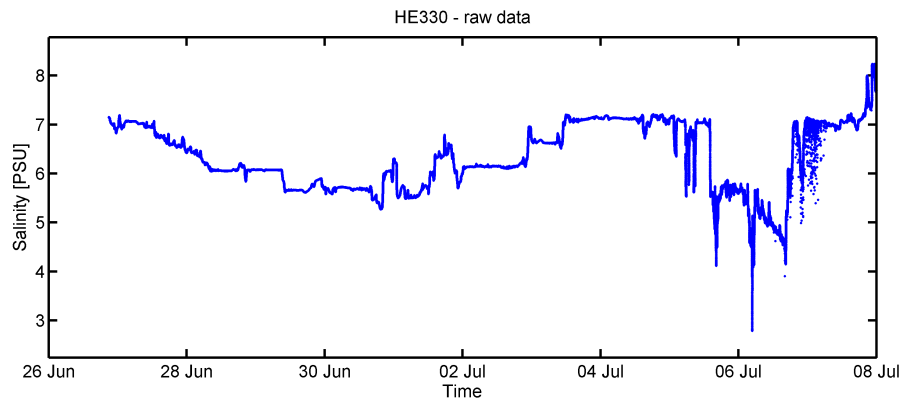


Figure 3: Raw salinity data.

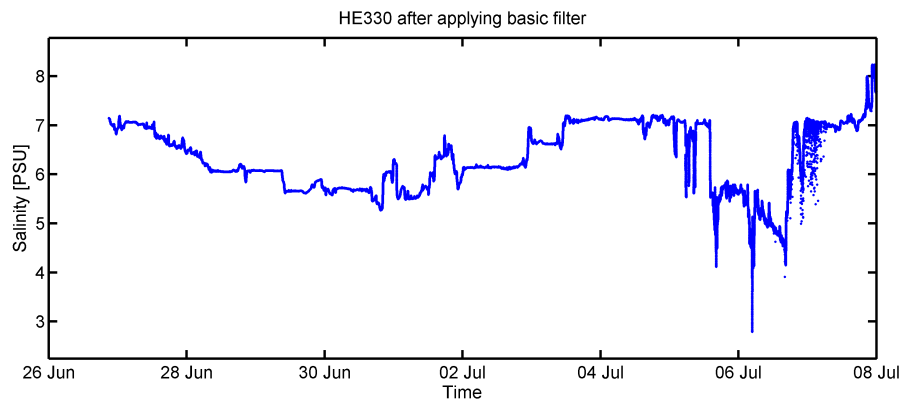


Figure 4: Salinity after basic filter.

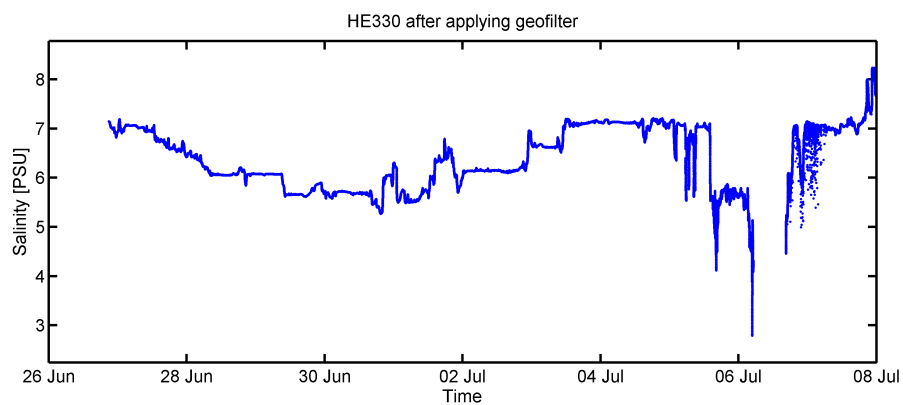


Figure 5: Salinity after geofilter.

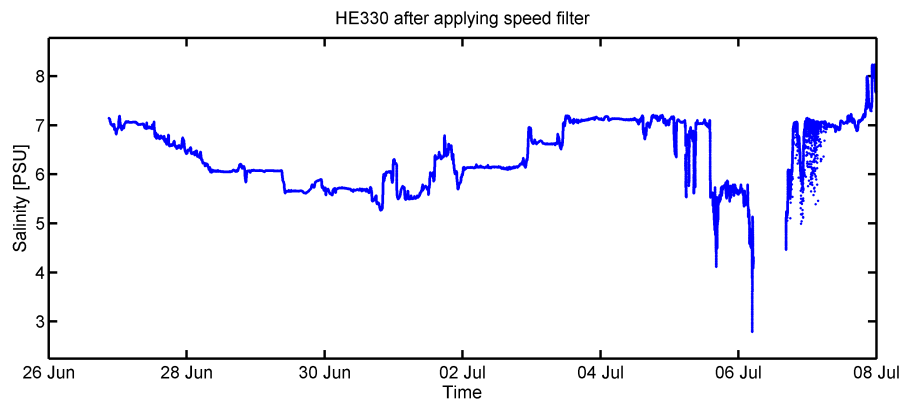


Figure 6: Salinity after speed filter.

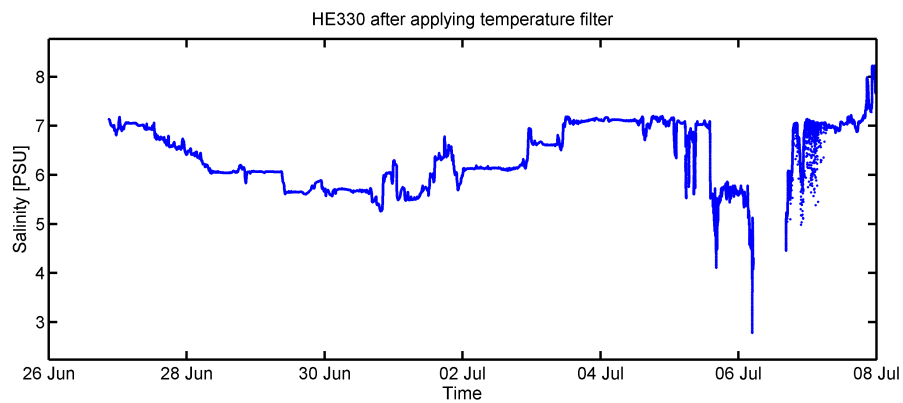


Figure 7: Salinity after temperature filter.

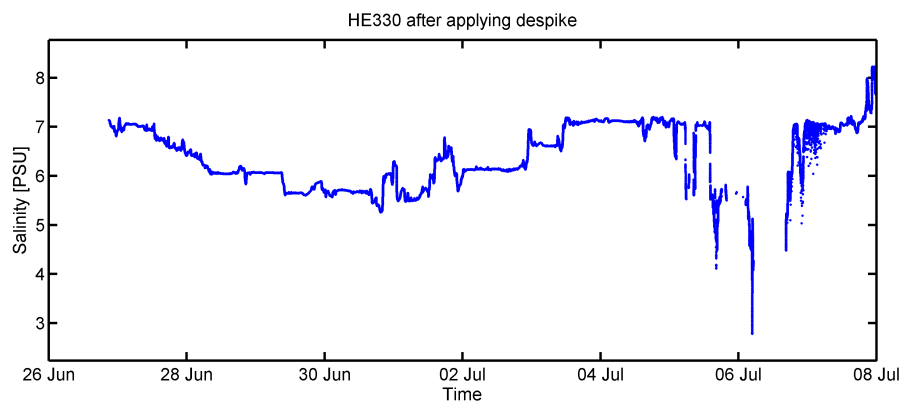


Figure 8: Salinity after despiking.

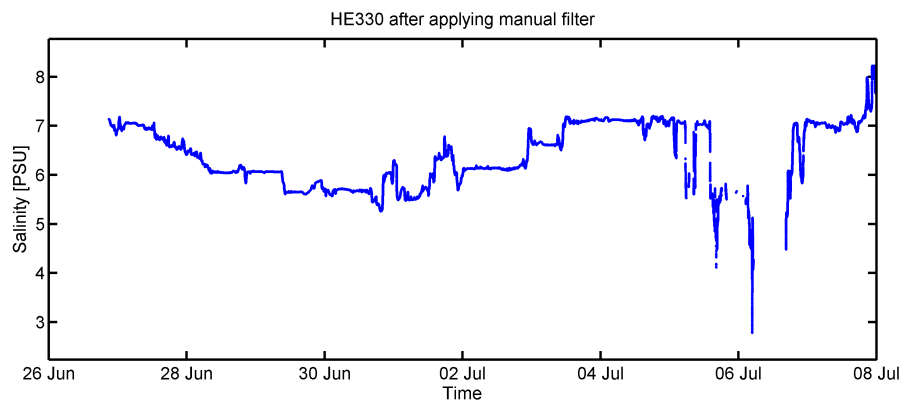


Figure 9: Salinity after manual filter.

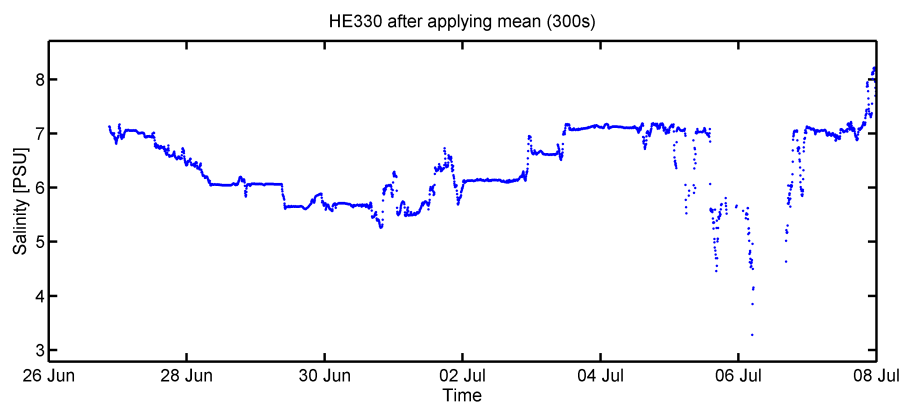


Figure 10: Salinity in 5-min-mean values.

## Result file

Text File (HE330\_surf\_oce.tab):

The format is a plain text (tab-delimited values) file.

Column separator	Tabulator "\t"
Column 1	Date and time expressed according to ISO 8601
Column 3	Latitude in decimal format, unit degree
Column 4	Longitude in decimal format, unit degree
Column 5	Depth below water surface, unit meter
Column 6	Temperature, unit degree
Column 7	Salinity, unit PSU

Processing Report (HE330\_TSG.pdf):

This PDF document.