

Manuscript Number: ANBEH-D-16-00994R2

Title: Slow to change? Individual fidelity to three-dimensional foraging habitats in southern elephant seals, *Mirounga leonina*

Article Type: UK Research paper

Corresponding Author: Dr. Trevor McIntyre,

Corresponding Author's Institution: University of Pretoria

First Author: Trevor McIntyre

Order of Authors: Trevor McIntyre; Marthán Bester; Horst Bornemann; Cheryl Tosh; Nico de Bruyn

Abstract: Slow to change? Individual fidelity to three-dimensional foraging habitats in southern elephant seals, *Mirounga leonina*

Long-term fidelity to foraging areas may have fitness benefits to individuals, particularly in unpredictable environments. However, such strategies may result in short-term energetic losses and delay responses to fast environmental changes. We used satellite tracking data and associated diving data to record the habitat use of nine individual southern elephant seals (*Mirounga leonina*) over 34 winter migrations. By assessing overlap in two- and three-dimensional home ranges we illustrate strong long-term (up to seven year) fidelity to foraging habitat. Furthermore, a repeatability statistic and hierarchical clustering exercise provided evidence for individual specialization of foraging migration strategies. We discuss the possible influences of stable long-term foraging migration strategies on the adaptability of individual elephant seals to rapid environmental change. Our results further illustrate the need for more long-term longitudinal studies to quantify the influence of individual-level site familiarity, fidelity and specialization on population-level resource selection and population dynamics.

**Title:** Slow to change? Individual fidelity to three-dimensional foraging habitats in southern elephant seals, *Mirounga leonina*

**Authors:** Trevor McIntyre<sup>1</sup> (corresponding author), Marthán N. Bester<sup>1</sup>, Horst Bornemann<sup>2</sup>, Cheryl A. Tosh<sup>1</sup>, P. J. Nico de Bruyn<sup>1</sup>

**Addresses:**

1. Mammal Research Institute, Department of Zoology and Entomology, University of Pretoria, Private Bag X20, Hatfield, 0028, South Africa.
2. Alfred Wegener Institute Helmholtz Centre for Polar and Marine Research, Biosciences, Benthic-Pelagic Processes, PO Box 120161, 27515 Bremerhaven, Germany.

**Author for correspondence:** Trevor McIntyre  
e-mail: [tmcintyre@zoology.up.ac.za](mailto:tmcintyre@zoology.up.ac.za)  
tel: +27 (0)12 420 4608

14 February 2017

Editor  
*Animal Behaviour*

Dear Editor

#### SUBMISSION OF REVISED MANUSCRIPT

Appended please find the revised manuscript now entitled: **“Slow to change? Individual fidelity to three-dimensional foraging habitats in southern elephant seals, *Mirounga leonina*”**.

We have now completed a revision of the above-mentioned manuscript and addressed all of the editor’s remarks as follows:

1. Put keywords in alphabetical order.

>> **Done – please see Abstract document**

2. Take the figures out of the text and upload them separately. Similarly, put all the tables together after the references. Figure captions should be collected together and placed after the references and tables in the manuscript. They must not be on the same page as the figure or uploaded as figures.

>> **Done - please refer to the highlighted document.**

3. Tables should have a short one-sentence title above the table and other information should be placed below the table.

>> **Done - please refer to the highlighted document.**

4. 'N' should be a capital letter in italics.

>> **Done - all places where this was done are highlighted in the highlight document.**

5. Table 2. Remove the internal horizontal line.

>> **Done. However, we retained an underlining of the “50% 3D-UD” for clarity. Please advise should you require any further amendments here.**

6. Use double line spacing in the references.

>> **Done.**

7. For software references such as Calenge 2015 add the website address.

>> **Done - please refer to the highlighted reference list.**

We also attach a version of the new manuscript, highlighting the changes/corrections made, as well as a ‘clean’ version of the revised manuscript.

We trust that we have adequately addressed the all comments and wish to thank you again for your attention to this manuscript.

Trevor McIntyre & co-authors

Mammal Research Institute, Department of Zoology & Entomology  
University of Pretoria, South Africa  
Tel: +27-12-4204608  
Mobile: +27-78-0243511  
E-mail: [tmcintyre@zoology.up.ac.za](mailto:tmcintyre@zoology.up.ac.za)

## **Highlights**

- We recorded the oceanic behaviour of focal elephant seals over multiple years
- Seals displayed long-term fidelity to three-dimensional migration strategies
- Individual specialization was evident in foraging migrations
- The reported high fidelity may limit the adaptability of individuals

## 1 **Introduction**

2 Many species display foraging site fidelity, returning repeatedly to the same foraging areas  
3 (e.g. Augé, Chilvers, Moore, & Davis, 2014; Weber et al., 2015), even when habitat quality is  
4 sub-optimal (Krebs, 1971; Merkle, Cherry, & Fortin, 2015). Fidelity to foraging areas may  
5 have long-term advantages for individual fitness, particularly in unpredictable environments  
6 (Switzer, 1993). For example, animals may return to foraging areas because they are familiar  
7 with resources (Greenwood, 1980) and able to exploit comparatively productive areas,  
8 resulting in long-term energetic gains. Animals may also return to certain areas because they  
9 are familiar with potential refuges and able to avoid predation (Clarke et al., 1993; Forrester,  
10 Casady, & Wittmer, 2015). The benefits of long-term site fidelity may have short-term costs  
11 if sufficient food cannot be found in temporally heterogeneous environments (Bradshaw,  
12 Hindell, Sumner, & Michael, 2004). More significant fitness costs of site fidelity may be  
13 incurred when animals are unable to respond to short- and medium term changes in food  
14 availability by switching between foraging patches (e.g. Newell, 1999; Whisson, Dixon,  
15 Taylor, & Melzer, 2016). Once an individual has learned a behaviour it may be hesitant to  
16 change or to adopt new foraging strategies, especially if the associated risks are great. The  
17 risks of looking for new foraging patches may be particularly great if foraging patches are far  
18 apart or are of unpredictable quality.

19

20 Individual animals sometimes display individual-level foraging fidelity, where the  
21 intra-individual variation in space use is less than the inter-individual variation in space use  
22 within a population (Wakefield et al., 2015). Individual-level foraging fidelity may be a type  
23 of individual specialization, best explained by phenotypic trade-offs when specialization in  
24 one strategy results in the inability to efficiently perform an alternative strategy (Bolnick et  
25 al., 2003). Various foraging behaviours such as prey recognition, capture ability, digestive

26 capacity and predator avoidance strategies may be affected. The existence of individual-level  
27 specialization, in terms of site fidelity and dietary specialization, has long been recognized  
28 but rarely explicitly considered in ecological studies (Piper, 2011).

29  
30 Foraging site fidelity has been widely illustrated in marine vertebrates, including  
31 marine birds (e.g. Baylis et al., 2015), turtles (e.g. Carman et al., 2016), fish (e.g. Gannon et  
32 al., 2015) and marine mammals (e.g. Vermeulen et al., 2016). Pinnipeds in particular often  
33 display high levels of foraging site fidelity (e.g. Arthur et al., 2015; Baylis et al., 2015; Wege,  
34 Tosh, de Bruyn, & Bester, 2016). Fidelity to large-scale foraging areas was demonstrated for  
35 southern elephant seals (*Mirounga leonina*), but individual seals that were faithful to foraging  
36 areas did not show mass gain benefits (Bradshaw et al., 2004). However, it was proposed that  
37 returning to generally more productive areas could result in benefits over longer timescales  
38 (Bradshaw et al., 2004). Also, Authier et al. (2012) illustrated that lower variation in the  
39 isotopic foraging niche of male southern elephant seals covaried positively with estimated  
40 lifespans, thereby suggesting lifetime fitness benefits associated with foraging fidelity in this  
41 species. While these reports provide valuable insights, little information is available  
42 regarding the foraging area fidelity of individual elephant seals over the long term (3+ years)  
43 and no information exists on fidelity to specific foraging strategies used to exploit the vertical  
44 dimension.

45  
46 Animal space use is typically quantified in two dimensions, despite the fact that  
47 most animals also use space in a vertical dimension (i.e. by flying, diving or burrowing).  
48 Incorporating the vertical component into representations of space use may provide novel  
49 ecological insights and have conservation management benefits (Tracey et al., 2014). Habitat  
50 use studies have attempted to incorporate the vertical dimension through separate analyses of

51 vertical metrics without incorporating spatial position (2-dimensions). Some recent studies,  
52 particularly on marine predators, have incorporated the vertical behaviour component (e.g.  
53 spherical first-passage time, Bailleul, Lesage, & Hammill, 2010). More recently, three  
54 dimensional utilization distributions (3D UD) quantified vertical space use and home range  
55 overlap of sharks (Simpfendorfer, Olsen, Heupel, & Moland, 2012) and birds (Cooper,  
56 Sherry, & Marra, 2014).

57

58 Southern elephant seals have a circumpolar distribution and their foraging behaviour  
59 is closely linked to their specific haul-out sites (Hindell et al., 2016). Elephant seals display a  
60 high degree of fidelity to their haul-out sites (Hofmeyr, Kirkman, Pistorius, & Bester, 2012),  
61 which may be an important indication of learned behaviour in these animals. Here we assess  
62 (1) the persistence of migration site fidelity in southern elephant seals; (2) fidelity to a three-  
63 dimensional environment, particularly the water depths exploited; and (3) the individual  
64 repeatability and specialization of migration strategies. We predicted that foraging site  
65 fidelity in elephant seals would decay over the long-term, due to the spatiotemporally patchy  
66 nature of their prey distribution (i.e. that site fidelity would persist only as long as prey  
67 patches persist – Kamil, 1983). Fidelity to three-dimensional environments was expected to  
68 be lower, both as a result of variation in the vertical distribution of prey items, as well as the  
69 influences of physiological development and ageing on the dive capacity of seals. Finally, the  
70 propensity for Marion Island's elephant seals to forage in deep ocean areas, south-west of the  
71 island (Hindell et al., 2016; Oosthuizen, Bester, Altwegg, McIntyre, & de Bruyn, 2015) led to  
72 a prediction of limited individual-level specialization in migration strategies.

73

## 74 **Methods**

### 75 *Ethical Note*

76 The research described refers to an Antarctic seal species, the southern elephant seal. It  
77 conforms to Antarctic Treaty legislation and to the SCAR Code of Conduct for the Use of  
78 Animals for Scientific Purposes in Antarctica (ATCM XXXIV 2011). We adhere to the  
79 ‘Guidelines for the use of animals in research’ as published in *Animal Behaviour* (1990, 41,  
80 183–186) and the laws of the country where the research was conducted. All flipper tagging  
81 and satellite device deployment/retrieval procedures were reviewed and approved by the  
82 Animal Use and Care Committee and more recently the renamed Animal Ethics Committee  
83 of the University of Pretoria (AUCC 040827-024; AUCC 040827-023 and EC077-15), and  
84 fieldwork was performed under Prince Edward Island’s Research Permits R8-04 and R04-08.  
85 All dive and track data are available via the PANGAEA Data Publisher for Earth &  
86 Environmental Science ([doi:10.1594/PANGAEA.871448](https://doi.org/10.1594/PANGAEA.871448)).

87

#### 88 *Track data and filtering*

89 As part of a series of tracking projects between April 2004 and February 2013, we deployed  
90 95 satellite-relay data loggers (either Series 9000 SRDLs, or CTD-SRDLs, Sea Mammal  
91 Research Unit, University of St Andrews, Scotland) on southern elephant seals of both sexes  
92 hauled out at sub-Antarctic Marion Island (46° 54’S; 37° 45’E). These instruments provided  
93 track locations (obtained via Service Argos estimates), basic time-depth profiles of  
94 approximately 20 dives per day and a maximum of four temperature-depth profiles per day  
95 (Boehme et al., 2009).

96

97 Uniquely marked (de Bruyn, Tosh, Oosthuizen, Phalanndwa, & Bester, 2008) seals  
98 were immobilized using a handheld syringe, extended by a length of drip-tubing, to deliver a  
99 calculated dose of ketamine based on a visual estimation of the seal’s mass (Bester, 1988).

100 Seals were then observed from a distance until the anticipated end of the induction period



101 (about 20 min post-injection), and then approached for the first time to assess the depth of  
102 anaesthesia by evaluating reactions to stimuli (e.g. slight noise and touch) (Bornemann et al.,  
103 2013). As soon as the seals tolerated physical stimuli, their eyes were covered with a towel to  
104 protect against solar radiation and minimise unnecessary stimuli. Transmitters were glued  
105 onto the fur of the heads of the seals using a quick-setting epoxy resin (Field et al., 2012).  
106 The heaviest of these devices (CTD-SRDLs) weighed 545 g, representing 0.19% of the  
107 average post-moult departure mass of female elephant seals from this population (Postma,  
108 Bester, & De Bruyn, 2013). After their post-migration return to the island, data transmitting  
109 devices were either removed from sedated animals by shaving them off the fur or shed  
110 naturally with the pelage during the annual moult. No short-term deleterious effects were  
111 evident with immobilization, device deployment or retrieval, while tracking devices attached  
112 to elephant seals are known not to affect individual mass gain or survival in the long term  
113 (McMahon, Field, Bradshaw, White, & Hindell, 2008). We report on a subset of the resultant  
114 dataset, after retaining data from 34 post-moult migrations (as opposed to post-breeding  
115 migrations, Le Boeuf & Laws, 1994) from nine individual seals (two males and seven  
116 females) that successfully carried instruments over multiple winter migrations (Table 1).  
117 Only tracks with data for a minimum period of 30 days were included. Seals in this sample  
118 provided tracking and dive data for a median of three migrations (range: 2 – 7), each  
119 migration covering a median period of 223 days (range: 38 – 292).

120

121 All statistical analyses were undertaken in the R programming environment (Team,  
122 2016). Track data were filtered to remove estimated locations that required swim speeds in  
123 excess of 3.5 m/s and/or creating spikes in the track with angles smaller than 15° and 25°  
124 with extensions greater than 2,500 m and 5,000 m, respectively (Freitas, Lydersen, Fedak, &  
125 Kovacs, 2008).

126

127 *Inter-annual and multi-year fidelity*

128 Fidelity to home ranges was expressed as the overlap in 95% kernel density utilization  
129 distributions (UD) of two dimensional location data (latitude and longitude) and three  
130 dimensional diving data (latitude, longitude and dive depth). The two dimensional UD's were  
131 calculated using an *ad hoc* smoothing parameter, which assumes a bivariate normal UD in the  
132 R package '*adehabitatHR*' (Calenge, 2015). Overlap of two-dimensional UD's was calculated  
133 following Arthur et al. (Arthur et al., 2015), using Bhattacharyya's affinity (BA) for a general  
134 measure of similarity between UD estimates.

135

136         Daily median dive depth values were calculated for each two dimensional location  
137 to create a three dimensional dataset. We divided the datasets into daytime and nocturnal  
138 dives, as southern elephant seals often display diel vertical migration (e.g. Biuw et al., 2010;  
139 McIntyre, Bornemann, Plötz, Tosh, & Bester, 2011). Three dimensional kernel density  
140 utilisation distributions (3D-UD) were estimated in the '*ks*' package (Duong, 2016), using a  
141 two-stage plug-in method, developed by Duong and Hazelton (2003) and applied by  
142 Simpfendorfer et al. (2012) and Cooper et al. (2014) amongst others. We calculated overlap  
143 in 95% 3D-UD's both inter-annually and over multiple years (multi-year) for individual seals,  
144 following Simpfendorfer et al. (2012). Inter-annual overlap is the overlap for tracks from  
145 consecutive years (e.g. overlap between 2006 and 2007; 2007 and 2008 etc.), while multi-  
146 year overlap was calculated between tracks separated by a year or more (e.g. overlap between  
147 2006 and 2008; 2006 and 2009 etc.).

148

149 *Repeatability*

150 We applied a repeatability statistic to a series of track and behavioural metrics to assess  
151 individual behavioural consistency compared to the behaviours displayed by all the seals in  
152 the dataset. This repeatability statistic was calculated, making use of an intra-class correlation  
153 coefficient (Wolak, Fairbairn, & Paulsen, 2012), following McFarlane Tranquila et al.  
154 (2014). Accordingly, among-groups variance ( $s_A^2$ ) and within-individual variance  
155 components ( $s^2$ ) are derived from a linear mixed-effects model (R package ‘*psychometric*’).  
156 Repeatability ( $r$ ) was then calculated as:

$$r = \frac{s_A^2}{(s^2 + s_A^2)}$$

157 where high  $r$  values ( $> 0.5$ ) indicate consistent individual behaviours.

158

159 The repeatability statistic was applied to the following track and behavioural  
160 metrics: (1) the daytime and nocturnal 95% and 50% 3D-UDs incorporating the dive depths  
161 of tracked seals; (2) the maximum distance travelled away from Marion Island per migration  
162 and (3) the bearing of the location at the maximum distance away from Marion Island.

163

#### 164 *Hierarchical clustering*

165 We explored the possibility of individually specific migration strategies (consistent long term  
166 behaviour) using a hierarchical clustering approach. A principal components analysis (PCA)  
167 was first applied to a series of track- and dive metrics to generate a single metric  
168 representative of an overall strategy. Six daily metrics were included in the PCA: (1) median  
169 daytime dive depth; (2) median night-time dive depth; (3) diel vertical migration (defined as  
170 the difference between daytime and night-time median dive depths); (4) distance from  
171 Marion Island; (5) bearing from Marion Island; and (6) mean speed of travel (mean speed of  
172 travel between all locations associated with a specific day). The first five principal  
173 components explained 93.7% of the variance. The relative contribution of each principal

174 component to a single, weighted metric was determined from the loadings of the PCA output.  
175 This value was used in a hierarchical clustering analysis, using Ward's clustering criterion  
176 (Ward, 1963) on a Euclidean distance matrix.

177

## 178 **Results**

### 179 *Home range overlap*

180 Seven of the nine seals tracked over multiple migrations had overlapping 95% UD's that  
181 encompassed more than 50% of their home ranges (UD overlap > 0.5) (Fig. 1). Two  
182 individual seals tracked twice in non-consecutive years (RR217:2009, 2011 and  
183 YY039:2008, 2011), had comparatively disparate UD's, characterised by small areas of  
184 overlap (0.31 and 0.19 respectively, Table 1). Mean inter-annual overlap of 95% UD's was  
185  $0.73 \pm 0.14$  (Table 1). Overlap of UD's for multi-year periods were slightly lower at  $0.61 \pm$   
186  $0.18$ . Inter-annual overlap of 95% UD's was consistently high for individuals tracked over  
187 consecutive migrations, with a minimum overlap of  $0.65 \pm 0.17$  (maximum of  $0.91 \pm 0.03$ ).  
188 Multi-year overlap was more variable, ranging from 0.19 to 0.92 (Table 1).

189

### 190 *Three-dimensional UD overlap*

191 The mean inter-annual overlap of 95% 3D-UD's was  $0.54 \pm 0.15$  for daytime dives and  $0.57 \pm$   
192  $0.15$  for nocturnal dives. Overlap was slightly lower for multi-year periods at  $0.45 \pm 0.17$  for  
193 daytime dives and  $0.47 \pm 0.15$  for nocturnal dives. Five of the six seals that were tracked in  
194 consecutive years, recorded 95% 3D-UD's that overlapped by 60% - 71%. Individual  
195 variation was evident, with some seals using very similar three-dimensional spaces over long  
196 time periods (e.g. YY189, Fig. 2, Table 2), while others used slightly different depths  
197 between years (e.g. GG335, Fig. 2, Table 2) and others used completely different depths (e.g.  
198 PO225, Fig. 2, Table) despite substantial overlap in the two dimensional 95% UD (Fig. 1).

199 Areas of restricted movement or 50% 3D-UDs overlapped much less and was more variable  
200 between seals (Table 2), although two seals (PO043 and OO052) had similar areas of  
201 restricted movement and diving behaviours in consecutive years (50% 3D-UDs overlap =  
202 approximately 60%).

203

204 Two seals (PO225 and GG335) used similar oceanographic areas (2-D UD) (Fig. 1)  
205 but had very different diving behaviours (3-D –UD) (Fig. 2) in their subsequent migrations.  
206 GG335 dived to varied depths but maintained a substantial overlap in 3D-UDs over the 5  
207 years that it was tracked. This seal employed two general diving strategies, performing  
208 deeper dives in the last two migrations (2011, 2012), compared to the preceding three years  
209 (Fig. 2). PO225 dived to variable depths during its 2007 migration but used more specific  
210 depth layers in 2011.

211

#### 212 *Repeatability*

213 All repeatability ( $r$ ) values were larger than 0.5 (Table 3), suggesting consistency in  
214 individual behaviours. The lowest value (0.53) was calculated for track bearings of the point  
215 furthest away from Marion Island, indicating least consistency for this metric. All other  $r$   
216 values were equal to or larger than 0.6 (Table 3), indicating high levels of consistency in the  
217 three-dimensional area sizes used by seals and distances travelled away from Marion Island.

218

#### 219 *Hierarchical clustering*

220 Five principal components (PCs) explained 93.7% of the variance in our dataset and included  
221 both horizontal movement and vertical dive behaviour metrics. PC1 was most strongly  
222 associated with DVM, PC2 with distance and bearing from Marion Island + night-time dive

223 depths, PC3 with daytime dive depths, PC4 with travel speed and PC5 with bearing and  
224 distance.

225

226 Hierarchical clustering revealed three distinct migration strategies used by the  
227 tracked seals (Fig. 3), and multiple tracks of individual seals tended to group together in the  
228 same clusters (e.g. OO052, GG335). Two individuals (WW061 and RR217) grouped in two  
229 different clusters. Seals grouping into specific clusters generally foraged in the same areas.  
230 For example, GG335 (2007) and WW061 (2008) both travelled in a westerly direction away  
231 from Marion Island (and further), compared to their other migrations (Fig. 1). These  
232 migrations clustered with all of the migrations recorded for OO021 (Fig. 3), which used a  
233 similar spatial area (Fig. 1).

234

235 Migrations in cluster 1 (C1) covered a wide latitudinal range, from the Subtropical  
236 Front in the north to south of the APF (Fig. 3). Migrations in cluster 3 (C3) were  
237 characterised by the greatest distances away from Marion Island, but restricted to latitudes  
238 south of the Subantarctic Front, with many of the tracks concentrated south of the Antarctic  
239 Polar Front (APF). Cluster two (C2) comprised of tracks from one seal (OO052), which used  
240 a small area adjacent to Marion Island during all five of its post-moult migrations.

241

## 242 **Discussion**

243 Studies of fidelity to migration strategies over long-distances and long time periods, are often  
244 restricted to few migrations (e.g. two or three) (Mingozzi, Mencacci, Cerritelli, Giunchi, &  
245 Luschi, 2016), although a few recent studies have successfully tracked seasonally migrating  
246 birds over multiple years (e.g. Berthold et al., 2002; Lopez-Lopez et al., 2014; Vardanis,  
247 Nilsson, Klaassen, Strandberg & Alerstam, 2016). Similarly, individual foraging site fidelity

248 in elephant seals has only been studied from a small number of migrations, not separated by  
249 more than one or two years (e.g. Bradshaw et al., 2004; Simmons, 2008). In one study, a  
250 single northern elephant seal, *M. angustirostris*, followed the same path in 2006 as it did 11  
251 years previously in 1995; although the North American continent predisposes migration by  
252 this species to a westerly bearing away from haulout sites (Costa, Breed, & Robinson, 2012).  
253 Our study followed a small number of individual seals and reports on continued fidelity over  
254 long distances and time periods not reported before. Seals tracked in our sample showed high  
255 overlap in 95% UD, even over extended periods of up to seven years – averaging more than  
256 60% for both consecutive and non-consecutive migrations (Table 1). The long-term fidelity  
257 to oceanographic areas used by seals included their use of the vertical environment, and  
258 overlap in 95% 3D-UDs averaged more than 45% over multi-year comparisons and more  
259 than 50% for consecutive years.

260

261 Individual-level flexibility in inter-annual migration routes has been illustrated for  
262 some migrating birds known to forage on prey items that are variably distributed (Vardanis,  
263 Nilsson, Klaassen, Strandberg & Alerstam, 2016), although the drivers of such flexibility  
264 remain unknown. Bradshaw et al. (2004) were unable to link foraging success of tracked  
265 southern elephant seals to the likelihood that they would alter their foraging strategies,  
266 suggesting that elephant seals do not follow the win-stay/lose-switch rule (Shields, Cook,  
267 Hebblethwaite, & Wiles-Ehmann, 1988) over shorter time periods. Alternatively, they  
268 suggested that elephant seals would benefit over longer periods by returning to areas with  
269 generally increased productivity. While the condition of seals tracked in our sample is  
270 unknown and we were unable to assess the impacts of migration strategies, the long-term  
271 fidelity to migration patterns and oceanographic areas apparently supports the hypothesis of  
272 Bradshaw et al. (2004) that the win-stay/lose-switch rule does not apply over multiple

273 migrations in elephant seals. However, the reasonably small sample size we report on here  
274 does not exclude the possibility that tracked seals rarely encountered such poor foraging  
275 success as to prompt any switches in strategy.

276

277           Two seals in our sample (PO225 and GG335) displayed much more overlap in  
278 their 2D UD<sub>s</sub>, compared to their 3-D UD<sub>s</sub> (Figs. 1 and 2). GG335 evidently switched its  
279 depth use strategy once between 2010 and 2011, performing deeper dives in 2011 and 2012  
280 when compared to the earlier tracks. The two migrations of PO225 (2007; 2011) were 3 years  
281 apart, limiting any hypotheses on the development of dive behaviour. However, it is unlikely  
282 that the observed differences in diving behaviour are due to ontogenic development of diving  
283 capacity (Bennett, McConnell, & Fedak, 2001), because this seal was first tracked as an  
284 adult, eight year old male and diving capacity does not develop substantially once a seal  
285 reaches maturity (Grundling, 2014). Elephant seal dive strategies may change within-  
286 migrations (e.g. Bester, Bornemann, & McIntyre, in press; Biuw et al., 2010; McIntyre,  
287 Anson, et al., 2011), indicating that elephant seals are often able to exploit localised prey  
288 patches at different depths. The dissimilar diving behaviour seen in different migrations of  
289 PO225 and GG335 further suggests an element of inter-annual plasticity in foraging  
290 strategies. Long-term longitudinal tracking investigations are needed to explore these shifts in  
291 diving strategies.

292

293           Seal behaviours in our study showed high levels of individual repeatability (*r*).  
294 Combined with the outputs of the clustering exercise, these results suggest a high level of  
295 individual specialization in migration behaviour. Individual variation in southern elephant  
296 seal behaviours, and other marine predators, has been acknowledged and recently accounted  
297 for in behavioural modelling exercises (e.g. Farnsworth et al., 2015; Massie et al., 2016;



298 Stillfried, Belant, Svoboda, Beyer, & Kramer-Schadt, 2015). Moreover, recent studies have  
299 illustrated consistency and specialization in individual behaviour (e.g. Wakefield et al.,  
300 2015). Southern elephant seals employ various foraging strategies, exploiting shallow water  
301 masses associated with the Kerguelen Plateau, and the Antarctic Peninsula, or using deep,  
302 open water regions in the Southern Ocean (Hindell et al., 2016). Female elephant seals in the  
303 Antarctic Peninsula region display individual behavioural and foraging niche specialization  
304 with substantial within-migration behavioural plasticity (Hückstädt et al., 2012). Similarly,  
305 Marion Island elephant seals use three broad migration strategies (clusters) (Fig. 3), which  
306 were identified from diel vertical migration patterns, dive depths, and distance and bearing  
307 from Marion Island.

308

#### 309 *Implication of long-term fidelity and individual specialization*

310 The Southern Ocean is rapidly changing with a generally warming and freshening trend  
311 leading to expected poleward shifts in the distribution of lower trophic level consumers  
312 (Constable et al., 2014). The long-term spatial fidelity of elephant seals, including three-  
313 dimensional environments (this study), has potential implications for our understanding of  
314 their behavioural response to disturbance. The origin of fidelity described here is unknown  
315 and is not analysed in detail. However, site familiarity and fidelity may develop if juvenile  
316 elephant seals are successful during their first foraging migration (Bradshaw et al., 2004).  
317 This would suggest that environmental conditions experienced in early migrations may have  
318 consequences for future migration strategies (Dall, Bell, Bolnick, & Ratnieks, 2012). Juvenile  
319 southern elephant seals tracked from Marion Island generally travel due west, irrespective of  
320 year, and focus their foraging behaviour along bathymetric features, frontal zones and meso-  
321 scale eddies (Tosh et al., 2012; 2015), adding to their familiarity of the surrounding ocean.  
322 While the intra-migration dive behaviour of southern elephant seals is known to respond to

323 changes in the temperature structure of the water column and associated changes in the  
324 distribution of potential prey items (Guinet et al., 2014; McIntyre, Ansorge, et al., 2011), the  
325 long-term fidelity to foraging areas and diving behaviour may limit coarser-scale movement  
326 and behavioural adaptations of individual elephant seals to rapid environmental changes,  
327 although this requires further investigation. Similarly, other taxa such as seabirds and marine  
328 turtles, which rely on site-specific information gained early in life, may be more vulnerable to  
329 rapid environmental change and other anthropogenic disturbances (Hipfner, 2008; Vander  
330 Zanden et al., 2016; Wakefield et al., 2015). Future research needs to elucidate the role of  
331 long-term behavioural adaptations in individual elephant seals in response to rapid  
332 environmental change, particularly through long-term longitudinal monitoring of fitness  
333 consequences associated with behavioural changes in relation to environmental differences.

334

335           Our results show the value of long-term data on known individuals for illustrating  
336 individual repeatability, and potentially specialization, in the migration strategies of animals.  
337 Tracking studies are often used for conservation planning and environmental management  
338 purposes (e.g. Jabour et al., 2016). Such studies can benefit from incorporating seasonal  
339 variation in habitat use of target species (Braham et al., 2015), as well as samples  
340 representing substantial spatial variation (Mazor, Beger, McGowan, Possingham, & Kark,  
341 2016). However, while the influence of individual differences on our understanding of animal  
342 ecology is recognised (Dall et al., 2012), it is seldom implemented in population-level  
343 studies. Bolnick et al (2011) highlights that individual specialisation or phenotypic expression  
344 can have serious implications for studies on the ecology, evolution and conservation of  
345 populations. For example, resource selection models which assume foragers are informed  
346 about their total surroundings to select the most favourable areas would benefit from  
347 incorporating effects associated with individual familiarity and fidelity (Wakefield et al.,

348 2015). Our study provides further support to the call for long-term longitudinal research  
349 quantifying the influence of site familiarity, site fidelity and resource specialization on animal  
350 population dynamics.

351

352

353

354 **References**

**Comment [TM1]:** Spacing revised to double-spacing throughout the reference list

- 355 Arthur, B., Hindell, M., Bester, M., Trathan, P., Jonsen, I., Staniland, I., ... Lea, M.-A.  
356 (2015). Return customers: foraging site fidelity and the effect of environmental  
357 variability in wide-ranging Antarctic fur seals. *Plos One*, *10*, e0120888.  
358 doi:10.1371/journal.pone.0120888
- 359 ATCM (2011) SCAR's Code of Conduct for the Use of Animals for Scientific Purposes in  
360 Antarctica. IP53, Agenda Item CEP 8c, presented by SCAR during XXXIV Antarctic  
361 Treaty Consultative Meeting, Buenos Aires, Argentina, 20 June - 21 July 2011, 4pp.  
362 [http://www.scar.org/scar\\_media/documents/science/atcm34\\_ip053\\_CofC\\_Animals.pdf](http://www.scar.org/scar_media/documents/science/atcm34_ip053_CofC_Animals.pdf)
- 363 Augé, A. A., Chilvers, B. L., Moore, A. B., & Davis, L. S. (2014). Importance of studying  
364 foraging site fidelity for spatial conservation measures in a mobile predator. *Animal*  
365 *Conservation*, *17*, 61–71. doi:10.1111/acv.12056
- 366 Authier, M., Bentaleb, I., Ponchon, A., Martin, C., & Guinet, C. (2012). Foraging fidelity as a  
367 recipe for a long life: foraging strategy and longevity in male southern elephant seals.  
368 *PloS One*, *7*(4), e32026. doi:10.1371/journal.pone.0032026
- 369 Bailleul, F., Lesage, V., & Hammill, M. O. (2010). Spherical First Passage Time: A tool to  
370 investigate area-restricted search in three-dimensional movements. *Ecological*  
371 *Modelling*, *221*, 1665–1673.
- 372 Baylis, A. M. M., Orben, R. A., Arnould, J. P. Y., Peters, K., Knox, T., Costa, D. P., &  
373 Staniland, I. J. (2015). Diving deeper into individual foraging specializations of a large  
374 marine predator, the southern sea lion. *Oecologia*, *179*(4), 1053–1065.  
375 doi:10.1007/s00442-015-3421-4
- 376 Baylis, A. M. M., Orben, R. A., Pistorius, P., Brickle, P., Staniland, I., & Ratcliffe, N. (2015).  
377 Winter foraging site fidelity of king penguins breeding at the Falkland Islands. *Marine*  
378 *Biology*, *162*, 99–110. doi:10.1007/s00227-014-2561-0

379 Bennett, K. A., McConnell, B. J., & Fedak, M. (2001). Diurnal and seasonal variations in the  
380 duration and depth of the longest dives in southern elephant seals (*Mirounga leonina*):  
381 possible physiological and behavioural constraints. *Journal of Experimental Biology*,  
382 204, 649–662.

383 Berthold, P., v. d. Bossche, W., Jakubiec, Z., Kaatz, C., Kaatz, M. & Querner, U. (2002).  
384 Long-term satellite tracking sheds light upon variable migration strategies of White  
385 Storks (*Ciconia ciconia*). *Journal of Ornithology*, 143, 489-495.

386 Bester, M. N. (1988). Marking and monitoring studies of the Kerguelen stock of southern  
387 elephant seals *Mirounga leonina* and their bearing on biological research in the Vestfold  
388 Hills. *Hydrobiologia*, 165, 269–277.

389 Bester, M. N., Bornemann, H., & McIntyre, T. (n.d.). Antarctic marine mammals and sea ice.  
390 In D. N. Thomas & G. S. Dieckman (Eds.), *Sea Ice* (3rd ed.). Oxford: Wiley-Blackwell.

391 Biuw, M., Nøst, O. A., Stien, A., Zhou, Q., Lydersen, C., & Kovacs, K. M. (2010). Effects of  
392 hydrographic variability on the spatial, seasonal and diel diving patterns of southern  
393 elephant seals in the eastern Weddell Sea. *PLoS ONE*, 5(11), e13816.  
394 doi:10.1371/journal.pone.0013816

395 Boehme, L., Lovell, P., Biuw, M., Roquet, F., Nicholson, J., Thorpe, S. E., ... Fedak, M.  
396 (2009). Technical Note: Animal-borne CTD-Satellite Relay Data Loggers for real-time  
397 oceanographic data collection. *Ocean Science*, 5, 685–695.

398 Bolnick, D. I., Amarasekare, P., Araujo, M. S., R, B., Levine, J. M., Novak, M., ... Vasseur,  
399 D. A. (2011). Why intraspecific trait variation matters in community ecology. *Trends in*  
400 *Ecology and Evolution*, 26(4), 183–192. doi:10.1016/j.tree.2011.01.009

401 Bolnick, D. I., Svanbäck, R., Fordyce, J. A., Yang, L. H., Davis, J. M., Hulsey, C. D., &  
402 Forister, M. L. (2003). The ecology of individuals: incidence and implications of  
403 individual specialization. *The American Naturalist*, 161(1), 1–28.

404 Bradshaw, C. J. A., Hindell, M. A., Sumner, M. D., & Michael, K. J. (2004). Loyalty pays:  
405 potential life history consequences of fidelity to marine foraging regions by southern  
406 elephant seals. *Animal Behaviour*, 68, 1349–1360.

407 Braham, M., Miller, T., Duerr, A. E., Lanzone, M., Fesnock, A., LaPre, L., ... Katzner, T.  
408 (2015). Home in the heat: Dramatic seasonal variation in home range of desert golden  
409 eagles informs management for renewable energy development. *Biological*  
410 *Conservation*, 186, 225–232. doi:10.1016/j.biocon.2015.03.020

411 Calenge, C. (2015). Home Range Estimation in R : the adehabitatHR Package. Retrieved  
412 from <https://cran.r-project.org/web/packages/adehabitatHR/index.html>

413 Carman, V. G., Bruno, I., Maxwell, S., Álvarez, K., Albareda, D., Acha, E. M., & Campagna,  
414 C. (2016). Habitat use, site fidelity and conservation opportunities for juvenile  
415 loggerhead sea turtles in the Río de la Plata, Argentina. *Marine Biology*, 163.  
416 doi:10.1007/s00227-015-2795-5

417 Clarke, M. F., da Silva, K. B., Lair, H., Pocklington, R., Kramer, D. L., & McLaughlin, R. L.  
418 (1993). Site familiarity affects escape behaviour of the eastern chipmunk, *Tamias*  
419 *striatus*. *Oikos*, 66(3), 533–537.

420 Constable, A. J., Melbourne-Thomas, J., Corney, S. P., Arrigo, K. R., Barbraud, C., Barnes,  
421 D. K. A., ... Ziegler, P. (2014). Climate change and Southern Ocean ecosystems I : how  
422 changes in physical habitats directly affect marine biota. *Global Change Biology*.  
423 doi:10.1111/gcb.12623

424 Cooper, N. W., Sherry, T. W., & Marra, P. P. (2014). Modeling three-dimensional space use  
425 and overlap in birds. *Auk*, 131, 681–693. doi:10.1642/AUK-14-17.1

426 Costa, D. P., Breed, G. A., & Robinson, P. W. (2012). New insights into pelagic migrations :  
427 implications for ecology and conservation. *Annual Review of Ecology, Evolution, and*  
428 *Systematics*, 43, 73–96. doi:10.1146/annurev-ecolsys-102710-145045

429 Dall, S. R. X., Bell, A. M., Bolnick, D. I., & Ratnieks, F. L. W. (2012). An evolutionary  
430 ecology of individual differences. *Ecology Letters*, *15*, 1189–1198. doi:10.1111/j.1461-  
431 0248.2012.01846.x

432 de Bruyn, P. J. N., Tosh, C. A., Oosthuizen, W. C., Phalanndwa, M. V., & Bester, M. N.  
433 (2008). Temporary marking of unweaned southern elephant seal (*Mirounga leonina* L.)  
434 pups. *South African Journal of Wildlife Research*, *38*(2), 133–137.

435 Duong, T. (2016). Package “ks”. Retrieved from [https://cran.r-](https://cran.r-project.org/web/packages/ks/index.html)  
436 [project.org/web/packages/ks/index.html](https://cran.r-project.org/web/packages/ks/index.html)

437 Duong, T., & Hazelton, M. (2003). Plug-in bandwidth matrices for bivariate kernel density  
438 estimation. *Journal of Nonparametric Statistics*, *15*(1), 17–30.  
439 doi:10.1080/10485250306039

440 Farnsworth, M. L., Dickson, B. G., Zachmann, L. J., Hegeman, E. E., Cangelosi, A. R.,  
441 Jackson, T. G. J., & Scheib, A. F. (2015). Short-term space-use patterns of translocated  
442 Mojave desert tortoise in southern California. *PLoS ONE*, *10*(9), e0134250.  
443 doi:10.1371/journal.pone.0134250

444 Field, I. C., Harcourt, R. G., Boehme, L., Bruyn, P. J. N. De, Charrassin, J.-B., McMahon, C.  
445 R., ... Hindell, M. a. (2012). Refining instrument attachment on phocid seals. *Marine*  
446 *Mammal Science*, *28*(3), E325–E332. doi:10.1111/j.1748-7692.2011.00519.x

447 Forrester, T. D., Casady, D. S., & Wittmer, H. U. (2015). Home sweet home: fitness  
448 consequences of site familiarity in female black-tailed deer. *Behavioral Ecology and*  
449 *Sociobiology*, *69*, 603–612. doi:10.1007/s00265-014-1871-z

450 Freitas, C., Lydersen, C., Fedak, M., & Kovacs, K. M. (2008). A simple new algorithm to  
451 filter marine mammal Argos locations. *Marine Mammal Science*, *24*(2), 315–325.

452 Gannon, R., Payne, N. L., Suthers, I. M., Gray, C. A., Meulen, D. E. Van Der, & Taylor, M.  
453 D. (2015). Fine-scale movements , site fidelity and habitat use of an estuarine dependent

454 sparid. *Environmental Biology of Fishes*, 98, 1599–1608. doi:10.1007/s10641-015-0385-  
455 5

456 Greenwood, B. Y. P. J. (1980). Mating systems, philopatry and dispersal in birds and  
457 mammals. *Animal Behaviour*, 28, 1140–1162.

458 Grundling, A. (2014). *Ontogeny of southern elephant seal ( Mirounga leonina ) dive*  
459 *behaviour*. **B.Sc. hons. thesis**, University of Pretoria.

460 Guinet, C., Vacquié-garcia, J., Picard, B., Bessigneul, G., Lebras, Y., Dragon, A. C., ...  
461 Bailleul, F. (2014). Southern elephant seal foraging success in relation to temperature  
462 and light conditions : insight into prey distribution. *Marine Ecology Progress Series*,  
463 499, 285–301. doi:10.3354/meps10660

464 Hindell, M. A., McMahon, C. R., Bester, M. N., Boehme, L., Costa, D., Fedak, M. A., ...  
465 Charrassin, J.-B. (2016). Circumpolar habitat use in the southern elephant seal:  
466 implications for foraging success and population trajectories. *Ecosphers*, 7(May),  
467 e01213. doi:10.1002/ecs2.1213

468 Hipfner, J. M. (2008). Matches and mismatches: ocean climate, prey phenology and breeding  
469 success in a zooplanktivorous seabird. *Marine Ecology Progress Series*, 368, 295–304.  
470 doi:10.3354/meps07603

471 Hofmeyr, G. J. G., Kirkman, S. P., Pistorius, P. A., & Bester, M. N. (2012). Natal site fidelity  
472 by breeding female southern elephant seals in relation to their history of participation in  
473 the winter haulout. *African Journal of Marine Science*, 34(3), 373–382.

474 Hückstädt, L. A., Koch, P. L., McDonald, B. I., Goebel, M. E., Crocker, D. E., & Costa, D. P.  
475 (2012). Stable isotope analyses reveal individual variability in the trophic ecology of a  
476 top marine predator, the southern elephant seal. *Oecologia*, 169(2), 395–406.  
477 doi:10.1007/s00442-011-2202-y



478 Jabour, J., Lea, M.-A., Goldsworthy, S. D., Melcher, G., Sykes, K., & Hindell, M. A. (2016).  
479 Marine telemetry and the conservation and management of risk to seal species in Canada  
480 and Australia. *Ocean Development & International Law*, 47(3), 255–271.  
481 doi:10.1080/00908320.2016.1194094

482 Kamil, A. C. (1983). Optimal foraging theory and the psychology of learning. *American*  
483 *Zoologist*, 23(2), 291–302.

484 Krebs, J. R. (1971). Territory and breeding density in the Great Tit, *Parus Major L.* *Ecology*,  
485 52(1), 2–22.

486 Le Boeuf, B. J., & Laws, R. M. (1994). *Elephant Seals: Population Ecology, Behavior, and*  
487 *Physiology*. Berkeley: University of California Press.  
488 doi:http://ark.cdlib.org/ark:/13030/ft7b69p131/

489 López-López, P., García-Ripollés, C. & Urios, V. (2014). Individual repeatability in timing  
490 and spatial flexibility of migration routes of trans-Saharan migratory raptors. *Current*  
491 *Zoology*, 60(5), 642-652.

492 Massie, P. P., McIntyre, T., Ryan, P. G., Bester, M. N., Bornemann, H., & Ansorge, I. J.  
493 (2016). The role of eddies in the diving behaviour of female southern elephant seals.  
494 *Polar Biology*, 39, 297–307. doi:10.1007/s00300-015-1782-0

495 Mazor, T., Beger, M., McGowan, J., Possingham, H. P., & Kark, S. (2016). The value of  
496 migration information for conservation prioritization of sea turtles in the Mediterranean.  
497 *Global Ecology and Biogeography*, 25, 540–552. doi:10.1111/geb.12434

498 McFarlane Tranquilla, L. A., Montevecchi, W. A., Fifield, D. A., Hedd, A., Gaston, A. J.,  
499 Robertson, G. J., & Phillips, R. A. (2014). Individual winter movement strategies in two  
500 species of Murre (*Uria* spp.) in the Northwest Atlantic. *PLoS ONE*, 9(4).  
501 doi:10.1371/journal.pone.0090583

502 McIntyre, T., Ansorge, I. J., Bornemann, H., Plötz, J., Tosh, C. A., & Bester, M. N. (2011).  
503 Elephant seal dive behaviour is influenced by ocean temperature: implications for  
504 climate change impacts on an ocean predator. *Marine Ecology Progress Series*, 441,  
505 257–272. doi:10.3354/meps09383

506 McIntyre, T., Bornemann, H., Plötz, J., Tosh, C. A., & Bester, M. N. (2011). Water column  
507 use and forage strategies of female southern elephant seals from Marion Island. *Marine*  
508 *Biology*, 158(9), 2125–2139. doi:10.1007/s00227-011-1719-2

509 McMahan, C. R., Field, I. C., Bradshaw, C. J. A., White, G. C., & Hindell, M. A. (2008).  
510 Tracking and data-logging devices attached to elephant seals do not affect individual  
511 mass gain or survival. *Journal of Experimental Marine Biology and Ecology*, 360, 71–  
512 77.

513 Merkle, J. A., Cherry, S. G., & Fortin, D. (2015). Bison distribution under conflicting  
514 foraging strategies: site fidelity vs. energy maximization. *Ecology*, 96(7), 1793–1801.

515 Mingozzi, T., Mencacci, R., Cerritelli, G., Giunchi, D., & Luschi, P. (2016). Living between  
516 widely separated areas: Long-term monitoring of Mediterranean loggerhead turtles  
517 sheds light on cryptic aspects of females spatial ecology. *Journal of Experimental*  
518 *Marine Biology and Ecology*, 485, 8–17. doi:10.1016/j.jembe.2016.08.007

519 Newell, G. R. (1999). Responses of Lumholtz’s tree-kangaroo ( *Dendrolagus lumholtzi* ) to  
520 loss of habitat within a tropical rainforest fragment. *Biological Conservation*, 91, 181–  
521 189.

522 Oosthuizen, W. C., Bester, M. N., Altwegg, R., McIntyre, T., & de Bruyn, P. J. N. (2015).  
523 Decomposing the variance in southern elephant seal weaning mass: partitioning  
524 environmental signals and maternal effects. *Ecosphere*, 6(August), 1–22.

525 Piper, W. H. (2011). Making habitat selection more “familiar” : a review. *Behavioral Ecology*  
526 *and Sociobiology*, 65, 1329–1351. doi:10.1007/s00265-011-1195-1

527 Postma, M., Bester, M. N., & De Bruyn, P. J. N. (2013). Spatial variation in female southern  
528 elephant seal mass change assessed by an accurate non-invasive photogrammetry  
529 method. *Antarctic Science*, 25(6), 731–740. doi:10.1017/S0954102013000059

530 R Core Team (2016). R: A language and environment for statistical computing. R Foundation  
531 for Statistical Computing, Vienna, Austria. Retrieved from <http://www.r-project.org>

532 Shields, W. M., Cook, J. R., Hebblethwaite, M. L., & Wiles-Ehmann, S. S. (1988). Ideal free  
533 coloniality in the swallows. In C. N. Slobodkin (Ed.), *The Ecology of Social*  
534 *Behavior* (pp. 189–228). San Diego: Academic Press.

535 Simmons, S. E. (2008). *Environmental and individual effects on the foraging success of an*  
536 *apex predator, the northern elephant seal (Mirounga angustirostris)*. Ph.D. thesis,  
537 University of California, Santa Cruz.

538 Simpfendorfer, C. A., Olsen, E. M., Heupel, M. R., & Moland, E. (2012). Three-dimensional  
539 kernel utilization distributions improve estimates of space use in aquatic animals.  
540 *Canadian Journal of Fisheries and Aquatic Sciences*, 69, 565–572. doi:10.1139/F2011-  
541 179

542 Stillfried, M., Belant, J. L., Svoboda, N. J., Beyer, D. E., & Kramer-Schadt, S. (2015). When  
543 top predators become prey: Black bears alter movement behaviour in response to  
544 hunting pressure. *Behavioural Processes*, 120, 30–39. doi:10.1016/j.beproc.2015.08.003

545 Swart, S., & Speich, J. (2010). An altimetry-based gravest empirical mode south of Africa: 2.  
546 Dynamic nature of the Antarctic Circumpolar Current fronts. *Journal of Geophysical*  
547 *Research*, 115.

548 Switzer, P. V. (1993). Site fidelity in predictable and unpredictable habitats. *Evolutionary*  
549 *Ecology*, 7, 533–555.

550 Tosh, C. A., de Bruyn, P. J. N., Steyn, J., Bornemann, H., van den Hoff, J., Stewart, B. S., ...  
551 Bester, M. N. (2015). The importance of seasonal sea surface height anomalies for

552 foraging juvenile southern elephant seals. *Marine Biology*, 162(10), 2131–2140.  
553 doi:10.1007/s00227-015-2743-4

554 Tosh, C. A., Steyn, J., Bornemann, H., van den Hoff, J., Stewart, B., Plötz, J., & Bester, M.  
555 (2012). Marine habitats of juvenile southern elephant seals from Marion Island. *Aquatic*  
556 *Biology*, 17(1), 71–79. doi:10.3354/ab00463

557 Tracey, J. A., Sheppard, J., Zhu, J., Wei, F., Swaisgood, R. R., & Fisher, R. N. (2014).  
558 Movement-Based estimation and visualization of space use in 3D for wildlife ecology  
559 and conservation. *PLoS ONE*, 9(7), e101205. doi:10.1371/journal.pone.0101205

560 Vander Zanden, H. B., Bolten, A. B., Tucker, A. D., Hart, K. M., Lamont, M. M., Fujisaki, I.,  
561 ... Bjorndal, K. A. (2016). Biomarkers reveal sea turtles remained in oiled areas  
562 following the Deepwater Horizon oil spill. *Ecological Applications*, 26(7), 2145–2155.  
563 doi:10.1002/eap.1366

564 Vardanis, Y., Nilsson, J.-Å., Klaassen, R. H. G., Strandberg, R. & Alerstam, T. (2016)  
565 Consistency in long-distance bird migration: contrasting patterns in time and space for  
566 two raptors. *Animal Behaviour*, 113, 177-187.

567 Vermeulen, E., Balbiano, A., Belenguer, F., Colombil, D., Failla, M., Intrieri, E., & Bräger,  
568 S. (2016). Site-fidelity and movement patterns of bottlenose dolphins ( *Tursiops*  
569 *truncatus* ) in central Argentina : essential information for effective conservation.  
570 *Aquatic Conservation: Marine and Freshwater Ecosystems*, (January 2015).  
571 doi:10.1002/aqc.2618

572 Wakefield, E. D., Cleasby, I. R., Bearhop, S., Bodey, T. W., Davies, R. D., Miller, P. I., ...  
573 Hamer, K. C. (2015). Long-term individual foraging site fidelity — why some gannets  
574 don' t change their spots. *Ecology*, 96(11), 3058–3074.

575 Ward, J. H. J. (1963). Hierarchical grouping to optimize an objective function. *Journal of the*  
576 *American Statistical Association*, 58(301), 236–244.

577 Weber, N., Duengkae, P., Fahr, J., Dechmann, D. K. N., Phengsakul, P., Khumbucha, W., ...  
578 Newman, S. (2015). High-resolution GPS tracking of Lyle's flying fox between temples  
579 and orchards in central Thailand. *The Journal of Wildlife Management*, 79(6), 957–968.  
580 doi:10.1002/jwmg.904

581 Wege, M., Tosh, C. A., de Bruyn, P. J. N., & Bester, M. N. (2016). Cross-seasonal foraging  
582 site fidelity of subantarctic fur seals: implications for marine conservation areas. *Marine*  
583 *Ecology Progress Series*, 554, 225–239. doi:10.3354/meps11798

584 Whisson, D. A., Dixon, V., Taylor, M. L., & Melzer, A. (2016). Failure to respond to food  
585 resource decline has catastrophic consequences for koalas in a high-density population  
586 in southern Australia. *PLoS ONE*, 11(1), 1–12. doi:10.1371/journal.pone.0144348

587 Wolak, M. E., Fairbairn, D. J., & Paulsen, Y. R. (2012). Guidelines for estimating  
588 repeatability. *Methods in Ecology and Evolution*, 3, 129–137. doi:10.1111/j.2041-  
589 210X.2011.00125.x

590

591

## 592 Tables

593 **Table 1: Elephant seals tracked over multiple migrations.**

Tag	Sex	N	Age at deployments	Years successfully tracked	Inter-annual UD overlap	Multi-year UD overlap
GG335	F	6	7,8,9,10,11,12	2007,2008,2009,2010,2011,2012	0.65 ± 0.17	0.57 ± 0.15
OO021	F	3	5,6,7	2007,2008,2009	0.91 ± 0.03	0.92
OO052	M	5	4,5,6,9,11	2006,2007,2008,2011,2013	0.74 ± 0.09	0.64 ± 0.19
PO043	F	3	8,9,10	2007,2008,2009	0.69 ± 0.13	0.48
PO225	M	2	8,12	2007,2011	-	0.74
RR217	F	2	4,6	2009,2011	-	0.31
WW061	F	4	7,10,11,12	2008,2011,2012,2013	0.87 ± 0.09	0.58 ± 0.19
YY039	F	2	4,7	2008,2011	-	0.19
YY189	F	7	2,3,4,5,6,8,9	2006,2007,2008,2009,2010,2012,2013	0.71 ± 0.09	0.64 ± 0.19

594 Mean (± SD) overlap in inter-annual utilization distributions, as well as mean (± SD) overlap

595 in multiple-year utilization distributions, are reported. Only tracks over periods of more than

596 30 days (median: 223, range: 38 – 292) were included.

597

598 **Table 2: Inter-annual and multi-year overlap in 95% and 50% three-dimensional utilization**  
 599 **distributions (3D-UDs) for southern elephant seals.**

<i>Tag</i>	<i>N</i>	<u>95% 3D-UD</u>		Multi-year	
		<i>Inter-annual</i>		<i>Day</i>	<i>Night</i>
		<i>Day</i>	<i>Night</i>		
GG335	6	0.43 ± 0.1	0.51 ± 0.15	0.41 ± 0.15	0.48 ± 0.11
OO021	3	0.56 ± 0.09	0.58 ± 0.14	0.38	0.5
OO052	5	0.66 ± 0.2	0.63 ± 0.24	0.47 ± 0.16	0.45 ± 0.13
PO043	3	0.71	0.71	-	-
PO225	2	-	-	0.3	0.29
RR217	2	-	-	0.23	0.25
WW061	4	0.56	0.66	0.28 ± 0.07	0.35 ± 0.01
YY039	2	-	-	0.09	0.04
YY189	7	0.61 ± 0.14	0.62 ± 0.11	0.51 ± 0.17	0.52 ± 0.15
		<b>0.54 ± 0.15</b>	<b>0.57 ± 0.15</b>	<b>0.45 ± 0.17</b>	<b>0.47 ± 0.15</b>
		<u>50% 3D-UD</u>			
GG335	6	0.12 ± 0.07	0.25 ± 0.22	0.14 ± 0.17	0.19 ± 0.15
OO021	3	0.38 ± 0.05	0.44 ± 0.02	0.21	0.26
OO052	5	0.57 ± 0.04	0.62 ± 0.41	0.29 ± 0.31	0.24 ± 0.27
PO043	3	0.62	0.62	-	-
PO225	2	-	-	0.07	0.08
RR217	2	-	-	0	0
WW061	4	0.22	0.56	0.02 ± 0.03	0
YY039	2	-	-	0	0
YY189	7	0.37 ± 0.22	0.44 ± 0.14	0.22 ± 0.2	0.3 ± 0.19
		<b>0.31 ± 0.21</b>	<b>0.39 ± 0.23</b>	<b>0.2 ± 0.22</b>	<b>0.22 ± 0.2</b>

601 **Table 3: Repeatability (*r*) values of habitat use parameters.**

<b>Parameter</b>	<b>Repeatability (<i>r</i>)</b>
Daytime 95% 3D UD (kernel volume)	0.62
Night-time 95% 3D UD (kernel volume)	0.60
Daytime 50% 3D UD (kernel volume)	0.61
Night-time 50% 3D UD (kernel volume)	0.67
Maximum distance travelled from MI	0.62
Bearing of maximum distance point from MI	0.53

602 **Repeatability (*r*) values were calculated from intra-class correlation coefficients.**

603

604



605 **Figure captions.**

606

607 **Figure 1:** Post-moult track locations for nine southern elephant seals tracked over multiple  
608 years. The grey-shaded polygon represents the overlap between the 95% kernel density  
609 utilization distributions for all tracks.

610

611 **Figure 2:** Three-dimensional kernel density utilization distributions (3D-UDs) over multiple  
612 years for five southern elephant seals. Darker shading indicates 50% 3D-UDs and lighter  
613 shading 95% 3D-UDs.

614

615 **Figure 3:** Hierarchical cluster analysis of migration strategies of southern elephant seals  
616 tracked over multiple post-moult migrations, illustrating the three identified behavioural  
617 clusters (C1-C3). Locations of migrations identified in each of the clusters are presented in  
618 the three maps. Positions of all track locations not within a particular cluster are illustrated in  
619 light grey. PO225 is represented in only one migration, due to a comparatively low number of  
620 recorded daytime dive depths in 2007. STF = Subtropical Front, SAF = Subantarctic Front,  
621 APF = Antarctic Polar Front. Frontal locations were determined from Swart & Speich (2010).

## 1 **Introduction**

2 Many species display foraging site fidelity, returning repeatedly to the same foraging areas  
3 (e.g. Augé, Chilvers, Moore, & Davis, 2014; Weber et al., 2015), even when habitat quality is  
4 sub-optimal (Krebs, 1971; Merkle, Cherry, & Fortin, 2015). Fidelity to foraging areas may  
5 have long-term advantages for individual fitness, particularly in unpredictable environments  
6 (Switzer, 1993). For example, animals may return to foraging areas because they are familiar  
7 with resources (Greenwood, 1980) and able to exploit comparatively productive areas,  
8 resulting in long-term energetic gains. Animals may also return to certain areas because they  
9 are familiar with potential refuges and able to avoid predation (Clarke et al., 1993; Forrester,  
10 Casady, & Wittmer, 2015). The benefits of long-term site fidelity may have short-term costs  
11 if sufficient food cannot be found in temporally heterogeneous environments (Bradshaw,  
12 Hindell, Sumner, & Michael, 2004). More significant fitness costs of site fidelity may be  
13 incurred when animals are unable to respond to short- and medium term changes in food  
14 availability by switching between foraging patches (e.g. Newell, 1999; Whisson, Dixon,  
15 Taylor, & Melzer, 2016). Once an individual has learned a behaviour it may be hesitant to  
16 change or to adopt new foraging strategies, especially if the associated risks are great. The  
17 risks of looking for new foraging patches may be particularly great if foraging patches are far  
18 apart or are of unpredictable quality.

19

20 Individual animals sometimes display individual-level foraging fidelity, where the  
21 intra-individual variation in space use is less than the inter-individual variation in space use  
22 within a population (Wakefield et al., 2015). Individual-level foraging fidelity may be a type  
23 of individual specialization, best explained by phenotypic trade-offs when specialization in  
24 one strategy results in the inability to efficiently perform an alternative strategy (Bolnick et  
25 al., 2003). Various foraging behaviours such as prey recognition, capture ability, digestive

26 capacity and predator avoidance strategies may be affected. The existence of individual-level  
27 specialization, in terms of site fidelity and dietary specialization, has long been recognized  
28 but rarely explicitly considered in ecological studies (Piper, 2011).

29

30 Foraging site fidelity has been widely illustrated in marine vertebrates, including  
31 marine birds (e.g. Baylis et al., 2015), turtles (e.g. Carman et al., 2016), fish (e.g. Gannon et  
32 al., 2015) and marine mammals (e.g. Vermeulen et al., 2016). Pinnipeds in particular often  
33 display high levels of foraging site fidelity (e.g. Arthur et al., 2015; Baylis et al., 2015; Wege,  
34 Tosh, de Bruyn, & Bester, 2016). Fidelity to large-scale foraging areas was demonstrated for  
35 southern elephant seals (*Mirounga leonina*), but individual seals that were faithful to foraging  
36 areas did not show mass gain benefits (Bradshaw et al., 2004). However, it was proposed that  
37 returning to generally more productive areas could result in benefits over longer timescales  
38 (Bradshaw et al., 2004). Also, Authier et al. (2012) illustrated that lower variation in the  
39 isotopic foraging niche of male southern elephant seals covaried positively with estimated  
40 lifespans, thereby suggesting lifetime fitness benefits associated with foraging fidelity in this  
41 species. While these reports provide valuable insights, little information is available  
42 regarding the foraging area fidelity of individual elephant seals over the long term (3+ years)  
43 and no information exists on fidelity to specific foraging strategies used to exploit the vertical  
44 dimension.

45

46 Animal space use is typically quantified in two dimensions, despite the fact that  
47 most animals also use space in a vertical dimension (i.e. by flying, diving or burrowing).  
48 Incorporating the vertical component into representations of space use may provide novel  
49 ecological insights and have conservation management benefits (Tracey et al., 2014). Habitat  
50 use studies have attempted to incorporate the vertical dimension through separate analyses of

51 vertical metrics without incorporating spatial position (2-dimensions). Some recent studies,  
52 particularly on marine predators, have incorporated the vertical behaviour component (e.g.  
53 spherical first-passage time, Bailleul, Lesage, & Hammill, 2010). More recently, three  
54 dimensional utilization distributions (3D UD) quantified vertical space use and home range  
55 overlap of sharks (Simpfendorfer, Olsen, Heupel, & Moland, 2012) and birds (Cooper,  
56 Sherry, & Marra, 2014).

57

58 Southern elephant seals have a circumpolar distribution and their foraging behaviour  
59 is closely linked to their specific haul-out sites (Hindell et al., 2016). Elephant seals display a  
60 high degree of fidelity to their haul-out sites (Hofmeyr, Kirkman, Pistorius, & Bester, 2012),  
61 which may be an important indication of learned behaviour in these animals. Here we assess  
62 (1) the persistence of migration site fidelity in southern elephant seals; (2) fidelity to a three-  
63 dimensional environment, particularly the water depths exploited; and (3) the individual  
64 repeatability and specialization of migration strategies. We predicted that foraging site  
65 fidelity in elephant seals would decay over the long-term, due to the spatiotemporally patchy  
66 nature of their prey distribution (i.e. that site fidelity would persist only as long as prey  
67 patches persist – Kamil, 1983). Fidelity to three-dimensional environments was expected to  
68 be lower, both as a result of variation in the vertical distribution of prey items, as well as the  
69 influences of physiological development and ageing on the dive capacity of seals. Finally, the  
70 propensity for Marion Island's elephant seals to forage in deep ocean areas, south-west of the  
71 island (Hindell et al., 2016; Oosthuizen, Bester, Altwegg, McIntyre, & de Bruyn, 2015) led to  
72 a prediction of limited individual-level specialization in migration strategies.

73

## 74 **Methods**

### 75 *Ethical Note*

76 The research described refers to an Antarctic seal species, the southern elephant seal. It  
77 conforms to Antarctic Treaty legislation and to the SCAR Code of Conduct for the Use of  
78 Animals for Scientific Purposes in Antarctica (ATCM XXXIV 2011). We adhere to the  
79 ‘Guidelines for the use of animals in research’ as published in *Animal Behaviour* (1990, 41,  
80 183–186) and the laws of the country where the research was conducted. All flipper tagging  
81 and satellite device deployment/retrieval procedures were reviewed and approved by the  
82 Animal Use and Care Committee and more recently the renamed Animal Ethics Committee  
83 of the University of Pretoria (AUCC 040827-024; AUCC 040827-023 and EC077-15), and  
84 fieldwork was performed under Prince Edward Island’s Research Permits R8-04 and R04-08.  
85 All dive and track data are available via the PANGAEA Data Publisher for Earth &  
86 Environmental Science (doi:10.1594/PANGAEA.871448).

87

#### 88 *Track data and filtering*

89 As part of a series of tracking projects between April 2004 and February 2013, we deployed  
90 95 satellite-relay data loggers (either Series 9000 SRDLs, or CTD-SRDLs, Sea Mammal  
91 Research Unit, University of St Andrews, Scotland) on southern elephant seals of both sexes  
92 hauled out at sub-Antarctic Marion Island (46° 54’S; 37° 45’E). These instruments provided  
93 track locations (obtained via Service Argos estimates), basic time-depth profiles of  
94 approximately 20 dives per day and a maximum of four temperature-depth profiles per day  
95 (Boehme et al., 2009).

96

97 Uniquely marked (de Bruyn, Tosh, Oosthuizen, Phalanndwa, & Bester, 2008) seals  
98 were immobilized using a handheld syringe, extended by a length of drip-tubing, to deliver a  
99 calculated dose of ketamine based on a visual estimation of the seal's mass (Bester, 1988).

100 Seals were then observed from a distance until the anticipated end of the induction period

101 (about 20 min post-injection), and then approached for the first time to assess the depth of  
102 anaesthesia by evaluating reactions to stimuli (e.g. slight noise and touch) (Bornemann et al.,  
103 2013). As soon as the seals tolerated physical stimuli, their eyes were covered with a towel to  
104 protect against solar radiation and minimise unnecessary stimuli. Transmitters were glued  
105 onto the fur of the heads of the seals using a quick-setting epoxy resin (Field et al., 2012).  
106 The heaviest of these devices (CTD-SRDLs) weighed 545 g, representing 0.19% of the  
107 average post-moult departure mass of female elephant seals from this population (Postma,  
108 Bester, & De Bruyn, 2013). After their post-migration return to the island, data transmitting  
109 devices were either removed from sedated animals by shaving them off the fur or shed  
110 naturally with the pelage during the annual moult. No short-term deleterious effects were  
111 evident with immobilization, device deployment or retrieval, while tracking devices attached  
112 to elephant seals are known not to affect individual mass gain or survival in the long term  
113 (McMahon, Field, Bradshaw, White, & Hindell, 2008). We report on a subset of the resultant  
114 dataset, after retaining data from 34 post-moult migrations (as opposed to post-breeding  
115 migrations, Le Boeuf & Laws, 1994) from nine individual seals (two males and seven  
116 females) that successfully carried instruments over multiple winter migrations (Table 1).  
117 Only tracks with data for a minimum period of 30 days were included. Seals in this sample  
118 provided tracking and dive data for a median of three migrations (range: 2 – 7), each  
119 migration covering a median period of 223 days (range: 38 – 292).

120

121 All statistical analyses were undertaken in the R programming environment (Team,  
122 2016). Track data were filtered to remove estimated locations that required swim speeds in  
123 excess of 3.5 m/s and/or creating spikes in the track with angles smaller than 15° and 25°  
124 with extensions greater than 2,500 m and 5,000 m, respectively (Freitas, Lydersen, Fedak, &  
125 Kovacs, 2008).

126

127 *Inter-annual and multi-year fidelity*

128 Fidelity to home ranges was expressed as the overlap in 95% kernel density utilization  
129 distributions (UD) of two dimensional location data (latitude and longitude) and three  
130 dimensional diving data (latitude, longitude and dive depth). The two dimensional UD were  
131 calculated using an *ad hoc* smoothing parameter, which assumes a bivariate normal UD in the  
132 R package '*adehabitatHR*' (Calenge, 2015). Overlap of two-dimensional UD was calculated  
133 following Arthur et al. (Arthur et al., 2015), using Bhattacharyya's affinity (BA) for a general  
134 measure of similarity between UD estimates.

135

136         Daily median dive depth values were calculated for each two dimensional location  
137 to create a three dimensional dataset. We divided the datasets into daytime and nocturnal  
138 dives, as southern elephant seals often display diel vertical migration (e.g. Biuw et al., 2010;  
139 McIntyre, Bornemann, Plötz, Tosh, & Bester, 2011). Three dimensional kernel density  
140 utilisation distributions (3D-UD) were estimated in the '*ks*' package (Duong, 2016), using a  
141 two-stage plug-in method, developed by Duong and Hazelton (2003) and applied by  
142 Simpfendorfer et al. (2012) and Cooper et al. (2014) amongst others. We calculated overlap  
143 in 95% 3D-UDs both inter-annually and over multiple years (multi-year) for individual seals,  
144 following Simpfendorfer et al. (2012). Inter-annual overlap is the overlap for tracks from  
145 consecutive years (e.g. overlap between 2006 and 2007; 2007 and 2008 etc.), while multi-  
146 year overlap was calculated between tracks separated by a year or more (e.g. overlap between  
147 2006 and 2008; 2006 and 2009 etc.).

148

149 *Repeatability*

150 We applied a repeatability statistic to a series of track and behavioural metrics to assess  
151 individual behavioural consistency compared to the behaviours displayed by all the seals in  
152 the dataset. This repeatability statistic was calculated, making use of an intra-class correlation  
153 coefficient (Wolak, Fairbairn, & Paulsen, 2012), following McFarlane Tranquila et al.  
154 (2014). Accordingly, among-groups variance ( $s_A^2$ ) and within-individual variance  
155 components ( $s^2$ ) are derived from a linear mixed-effects model (R package ‘*psychometric*’).  
156 Repeatability ( $r$ ) was then calculated as:

$$r = \frac{s_A^2}{(s^2 + s_A^2)}$$

157 where high  $r$  values ( $> 0.5$ ) indicate consistent individual behaviours.

158

159 The repeatability statistic was applied to the following track and behavioural  
160 metrics: (1) the daytime and nocturnal 95% and 50% 3D-UDs incorporating the dive depths  
161 of tracked seals; (2) the maximum distance travelled away from Marion Island per migration  
162 and (3) the bearing of the location at the maximum distance away from Marion Island.

163

#### 164 *Hierarchical clustering*

165 We explored the possibility of individually specific migration strategies (consistent long term  
166 behaviour) using a hierarchical clustering approach. A principal components analysis (PCA)  
167 was first applied to a series of track- and dive metrics to generate a single metric  
168 representative of an overall strategy. Six daily metrics were included in the PCA: (1) median  
169 daytime dive depth; (2) median night-time dive depth; (3) diel vertical migration (defined as  
170 the difference between daytime and night-time median dive depths); (4) distance from  
171 Marion Island; (5) bearing from Marion Island; and (6) mean speed of travel (mean speed of  
172 travel between all locations associated with a specific day). The first five principal  
173 components explained 93.7% of the variance. The relative contribution of each principal



174 component to a single, weighted metric was determined from the loadings of the PCA output.  
175 This value was used in a hierarchical clustering analysis, using Ward's clustering criterion  
176 (Ward, 1963) on a Euclidean distance matrix.

177

## 178 **Results**

### 179 *Home range overlap*

180 Seven of the nine seals tracked over multiple migrations had overlapping 95% UD's that  
181 encompassed more than 50% of their home ranges (UD overlap > 0.5) (Fig. 1). Two  
182 individual seals tracked twice in non-consecutive years (RR217:2009, 2011 and  
183 YY039:2008, 2011), had comparatively disparate UD's, characterised by small areas of  
184 overlap (0.31 and 0.19 respectively, Table 1). Mean inter-annual overlap of 95% UD's was  
185  $0.73 \pm 0.14$  (Table 1). Overlap of UD's for multi-year periods were slightly lower at  $0.61 \pm$   
186  $0.18$ . Inter-annual overlap of 95% UD's was consistently high for individuals tracked over  
187 consecutive migrations, with a minimum overlap of  $0.65 \pm 0.17$  (maximum of  $0.91 \pm 0.03$ ).  
188 Multi-year overlap was more variable, ranging from 0.19 to 0.92 (Table 1).

189

### 190 *Three-dimensional UD overlap*

191 The mean inter-annual overlap of 95% 3D-UD's was  $0.54 \pm 0.15$  for daytime dives and  $0.57 \pm$   
192  $0.15$  for nocturnal dives. Overlap was slightly lower for multi-year periods at  $0.45 \pm 0.17$  for  
193 daytime dives and  $0.47 \pm 0.15$  for nocturnal dives. Five of the six seals that were tracked in  
194 consecutive years, recorded 95% 3D-UD's that overlapped by 60% - 71%. Individual  
195 variation was evident, with some seals using very similar three-dimensional spaces over long  
196 time periods (e.g. YY189, Fig. 2, Table 2), while others used slightly different depths  
197 between years (e.g. GG335, Fig. 2, Table 2) and others used completely different depths (e.g.  
198 PO225, Fig. 2, Table) despite substantial overlap in the two dimensional 95% UD (Fig. 1).

199 Areas of restricted movement or 50% 3D-UDs overlapped much less and was more variable  
200 between seals (Table 2), although two seals (PO043 and OO052) had similar areas of  
201 restricted movement and diving behaviours in consecutive years (50% 3D-UDs overlap =  
202 approximately 60%).

203

204 Two seals (PO225 and GG335) used similar oceanographic areas (2-D UD) (Fig. 1)  
205 but had very different diving behaviours (3-D –UD) (Fig. 2) in their subsequent migrations.  
206 GG335 dived to varied depths but maintained a substantial overlap in 3D-UDs over the 5  
207 years that it was tracked. This seal employed two general diving strategies, performing  
208 deeper dives in the last two migrations (2011, 2012), compared to the preceding three years  
209 (Fig. 2). PO225 dived to variable depths during its 2007 migration but used more specific  
210 depth layers in 2011.

211

### 212 *Repeatability*

213 All repeatability ( $r$ ) values were larger than 0.5 (Table 3), suggesting consistency in  
214 individual behaviours. The lowest value (0.53) was calculated for track bearings of the point  
215 furthest away from Marion Island, indicating least consistency for this metric. All other  $r$   
216 values were equal to or larger than 0.6 (Table 3), indicating high levels of consistency in the  
217 three-dimensional area sizes used by seals and distances travelled away from Marion Island.

218

### 219 *Hierarchical clustering*

220 Five principal components (PCs) explained 93.7% of the variance in our dataset and included  
221 both horizontal movement and vertical dive behaviour metrics. PC1 was most strongly  
222 associated with DVM, PC2 with distance and bearing from Marion Island + night-time dive

223 depths, PC3 with daytime dive depths, PC4 with travel speed and PC5 with bearing and  
224 distance.

225

226 Hierarchical clustering revealed three distinct migration strategies used by the  
227 tracked seals (Fig. 3), and multiple tracks of individual seals tended to group together in the  
228 same clusters (e.g. OO052, GG335). Two individuals (WW061 and RR217) grouped in two  
229 different clusters. Seals grouping into specific clusters generally foraged in the same areas.  
230 For example, GG335 (2007) and WW061 (2008) both travelled in a westerly direction away  
231 from Marion Island (and further), compared to their other migrations (Fig. 1). These  
232 migrations clustered with all of the migrations recorded for OO021 (Fig. 3), which used a  
233 similar spatial area (Fig. 1).

234

235 Migrations in cluster 1 (C1) covered a wide latitudinal range, from the Subtropical  
236 Front in the north to south of the APF (Fig. 3). Migrations in cluster 3 (C3) were  
237 characterised by the greatest distances away from Marion Island, but restricted to latitudes  
238 south of the Subantarctic Front, with many of the tracks concentrated south of the Antarctic  
239 Polar Front (APF). Cluster two (C2) comprised of tracks from one seal (OO052), which used  
240 a small area adjacent to Marion Island during all five of its post-moult migrations.

241

## 242 **Discussion**

243 Studies of fidelity to migration strategies over long-distances and long time periods, are often  
244 restricted to few migrations (e.g. two or three) (Mingozzi, Mencacci, Cerritelli, Giunchi, &  
245 Luschi, 2016), although a few recent studies have successfully tracked seasonally migrating  
246 birds over multiple years (e.g. Berthold et al., 2002; Lopez-Lopez et al., 2014; Vardanis,  
247 Nilsson, Klaassen, Strandberg & Alerstam, 2016). Similarly, individual foraging site fidelity

248 in elephant seals has only been studied from a small number of migrations, not separated by  
249 more than one or two years (e.g. Bradshaw et al., 2004; Simmons, 2008). In one study, a  
250 single northern elephant seal, *M. angustirostris*, followed the same path in 2006 as it did 11  
251 years previously in 1995; although the North American continent predisposes migration by  
252 this species to a westerly bearing away from haulout sites (Costa, Breed, & Robinson, 2012).  
253 Our study followed a small number of individual seals and reports on continued fidelity over  
254 long distances and time periods not reported before. Seals tracked in our sample showed high  
255 overlap in 95% UD<sub>s</sub>, even over extended periods of up to seven years – averaging more than  
256 60% for both consecutive and non-consecutive migrations (Table 1). The long-term fidelity  
257 to oceanographic areas used by seals included their use of the vertical environment, and  
258 overlap in 95% 3D-UD<sub>s</sub> averaged more than 45% over multi-year comparisons and more  
259 than 50% for consecutive years.

260

261 Individual-level flexibility in inter-annual migration routes has been illustrated for  
262 some migrating birds known to forage on prey items that are variably distributed (Vardanis,  
263 Nilsson, Klaassen, Strandberg & Alerstam, 2016), although the drivers of such flexibility  
264 remain unknown. Bradshaw et al. (2004) were unable to link foraging success of tracked  
265 southern elephant seals to the likelihood that they would alter their foraging strategies,  
266 suggesting that elephant seals do not follow the win-stay/lose-switch rule (Shields, Cook,  
267 Hebblethwaite, & Wiles-Ehmann, 1988) over shorter time periods. Alternatively, they  
268 suggested that elephant seals would benefit over longer periods by returning to areas with  
269 generally increased productivity. While the condition of seals tracked in our sample is  
270 unknown and we were unable to assess the impacts of migration strategies, the long-term  
271 fidelity to migration patterns and oceanographic areas apparently supports the hypothesis of  
272 Bradshaw et al. (2004) that the win-stay/lose-switch rule does not apply over multiple

273 migrations in elephant seals. However, the reasonably small sample size we report on here  
274 does not exclude the possibility that tracked seals rarely encountered such poor foraging  
275 success as to prompt any switches in strategy.

276

277           Two seals in our sample (PO225 and GG335) displayed much more overlap in  
278 their 2D UD<sub>s</sub>, compared to their 3-D UD<sub>s</sub> (Figs. 1 and 2). GG335 evidently switched its  
279 depth use strategy once between 2010 and 2011, performing deeper dives in 2011 and 2012  
280 when compared to the earlier tracks. The two migrations of PO225 (2007; 2011) were 3 years  
281 apart, limiting any hypotheses on the development of dive behaviour. However, it is unlikely  
282 that the observed differences in diving behaviour are due to ontogenic development of diving  
283 capacity (Bennett, McConnell, & Fedak, 2001), because this seal was first tracked as an  
284 adult, eight year old male and diving capacity does not develop substantially once a seal  
285 reaches maturity (Grundling, 2014). Elephant seal dive strategies may change within-  
286 migrations (e.g. Bester, Bornemann, & McIntyre, in press; Biuw et al., 2010; McIntyre,  
287 Ansorge, et al., 2011), indicating that elephant seals are often able to exploit localised prey  
288 patches at different depths. The dissimilar diving behaviour seen in different migrations of  
289 PO225 and GG335 further suggests an element of inter-annual plasticity in foraging  
290 strategies. Long-term longitudinal tracking investigations are needed to explore these shifts in  
291 diving strategies.

292

293           Seal behaviours in our study showed high levels of individual repeatability ( $r$ ).  
294 Combined with the outputs of the clustering exercise, these results suggest a high level of  
295 individual specialization in migration behaviour. Individual variation in southern elephant  
296 seal behaviours, and other marine predators, has been acknowledged and recently accounted  
297 for in behavioural modelling exercises (e.g. Farnsworth et al., 2015; Massie et al., 2016;

298 Stillfried, Belant, Svoboda, Beyer, & Kramer-Schadt, 2015). Moreover, recent studies have  
299 illustrated consistency and specialization in individual behaviour (e.g. Wakefield et al.,  
300 2015). Southern elephant seals employ various foraging strategies, exploiting shallow water  
301 masses associated with the Kerguelen Plateau, and the Antarctic Peninsula, or using deep,  
302 open water regions in the Southern Ocean (Hindell et al., 2016). Female elephant seals in the  
303 Antarctic Peninsula region display individual behavioural and foraging niche specialization  
304 with substantial within-migration behavioural plasticity (Hückstädt et al., 2012). Similarly,  
305 Marion Island elephant seals use three broad migration strategies (clusters) (Fig. 3), which  
306 were identified from diel vertical migration patterns, dive depths, and distance and bearing  
307 from Marion Island.

308

#### 309 *Implication of long-term fidelity and individual specialization*

310 The Southern Ocean is rapidly changing with a generally warming and freshening trend  
311 leading to expected poleward shifts in the distribution of lower trophic level consumers  
312 (Constable et al., 2014). The long-term spatial fidelity of elephant seals, including three-  
313 dimensional environments (this study), has potential implications for our understanding of  
314 their behavioural response to disturbance. The origin of fidelity described here is unknown  
315 and is not analysed in detail. However, site familiarity and fidelity may develop if juvenile  
316 elephant seals are successful during their first foraging migration (Bradshaw et al., 2004).  
317 This would suggest that environmental conditions experienced in early migrations may have  
318 consequences for future migration strategies (Dall, Bell, Bolnick, & Ratnieks, 2012). Juvenile  
319 southern elephant seals tracked from Marion Island generally travel due west, irrespective of  
320 year, and focus their foraging behaviour along bathymetric features, frontal zones and meso-  
321 scale eddies (Tosh et al., 2012; 2015), adding to their familiarity of the surrounding ocean.  
322 While the intra-migration dive behaviour of southern elephant seals is known to respond to

323 changes in the temperature structure of the water column and associated changes in the  
324 distribution of potential prey items (Guinet et al., 2014; McIntyre, Ansorge, et al., 2011), the  
325 long-term fidelity to foraging areas and diving behaviour may limit coarser-scale movement  
326 and behavioural adaptations of individual elephant seals to rapid environmental changes,  
327 although this requires further investigation. Similarly, other taxa such as seabirds and marine  
328 turtles, which rely on site-specific information gained early in life, may be more vulnerable to  
329 rapid environmental change and other anthropogenic disturbances (Hipfner, 2008; Vander  
330 Zanden et al., 2016; Wakefield et al., 2015). Future research needs to elucidate the role of  
331 long-term behavioural adaptations in individual elephant seals in response to rapid  
332 environmental change, particularly through long-term longitudinal monitoring of fitness  
333 consequences associated with behavioural changes in relation to environmental differences.

334

335           Our results show the value of long-term data on known individuals for illustrating  
336 individual repeatability, and potentially specialization, in the migration strategies of animals.  
337 Tracking studies are often used for conservation planning and environmental management  
338 purposes (e.g. Jabour et al., 2016). Such studies can benefit from incorporating seasonal  
339 variation in habitat use of target species (Braham et al., 2015), as well as samples  
340 representing substantial spatial variation (Mazor, Beger, McGowan, Possingham, & Kark,  
341 2016). However, while the influence of individual differences on our understanding of animal  
342 ecology is recognised (Dall et al., 2012), it is seldom implemented in population-level  
343 studies. Bolnick et al (2011) highlights that individual specialisation or phenotypic expression  
344 can have serious implications for studies on the ecology, evolution and conservation of  
345 populations. For example, resource selection models which assume foragers are informed  
346 about their total surroundings to select the most favourable areas would benefit from  
347 incorporating effects associated with individual familiarity and fidelity (Wakefield et al.,

348 2015). Our study provides further support to the call for long-term longitudinal research  
349 quantifying the influence of site familiarity, site fidelity and resource specialization on animal  
350 population dynamics.

351

352

353



354 **References**

- 355 Arthur, B., Hindell, M., Bester, M., Trathan, P., Jonsen, I., Staniland, I., ... Lea, M.-A.  
356 (2015). Return customers: foraging site fidelity and the effect of environmental  
357 variability in wide-ranging Antarctic fur seals. *Plos One*, *10*, e0120888.  
358 doi:10.1371/journal.pone.0120888
- 359 ATCM (2011) SCAR's Code of Conduct for the Use of Animals for Scientific Purposes in  
360 Antarctica. IP53, Agenda Item CEP 8c, presented by SCAR during XXXIV Antarctic  
361 Treaty Consultative Meeting, Buenos Aires, Argentina, 20 June - 21 July 2011, 4pp.  
362 [http://www.scar.org/scar\\_media/documents/science/atcm34\\_ip053\\_CofC\\_Animals.pdf](http://www.scar.org/scar_media/documents/science/atcm34_ip053_CofC_Animals.pdf)
- 363 Augé, A. A., Chilvers, B. L., Moore, A. B., & Davis, L. S. (2014). Importance of studying  
364 foraging site fidelity for spatial conservation measures in a mobile predator. *Animal*  
365 *Conservation*, *17*, 61–71. doi:10.1111/acv.12056
- 366 Authier, M., Bentaleb, I., Ponchon, A., Martin, C., & Guinet, C. (2012). Foraging fidelity as a  
367 recipe for a long life: foraging strategy and longevity in male southern elephant seals.  
368 *PloS One*, *7*(4), e32026. doi:10.1371/journal.pone.0032026
- 369 Bailleul, F., Lesage, V., & Hammill, M. O. (2010). Spherical First Passage Time: A tool to  
370 investigate area-restricted search in three-dimensional movements. *Ecological*  
371 *Modelling*, *221*, 1665–1673.
- 372 Baylis, A. M. M., Orben, R. A., Arnould, J. P. Y., Peters, K., Knox, T., Costa, D. P., &  
373 Staniland, I. J. (2015). Diving deeper into individual foraging specializations of a large  
374 marine predator , the southern sea lion. *Oecologia*, *179*(4), 1053–1065.  
375 doi:10.1007/s00442-015-3421-4
- 376 Baylis, A. M. M., Orben, R. A., Pistorius, P., Brickle, P., Staniland, I., & Ratcliffe, N. (2015).  
377 Winter foraging site fidelity of king penguins breeding at the Falkland Islands. *Marine*  
378 *Biology*, *162*, 99–110. doi:10.1007/s00227-014-2561-0

379 Bennett, K. A., McConnell, B. J., & Fedak, M. (2001). Diurnal and seasonal variations in the  
380 duration and depth of the longest dives in southern elephant seals (*Mirounga leonina*):  
381 possible physiological and behavioural constraints. *Journal of Experimental Biology*,  
382 204, 649–662.

383 Berthold, P., v. d. Bossche, W., Jakubiec, Z., Kaatz, C., Kaatz, M. & Querner, U. (2002).  
384 Long-term satellite tracking sheds light upon variable migration strategies of White  
385 Storks (*Ciconia ciconia*). *Journal of Ornithology*, 143, 489-495.

386 Bester, M. N. (1988). Marking and monitoring studies of the Kerguelen stock of southern  
387 elephant seals *Mirounga leonina* and their bearing on biological research in the Vestfold  
388 Hills. *Hydrobiologia*, 165, 269–277.

389 Bester, M. N., Bornemann, H., & McIntyre, T. (n.d.). Antarctic marine mammals and sea ice.  
390 In D. N. Thomas & G. S. Dieckman (Eds.), *Sea Ice* (3rd ed.). Oxford: Wiley-Blackwell.

391 Biuw, M., Nøst, O. A., Stien, A., Zhou, Q., Lydersen, C., & Kovacs, K. M. (2010). Effects of  
392 hydrographic variability on the spatial, seasonal and diel diving patterns of southern  
393 elephant seals in the eastern Weddell Sea. *PLoS ONE*, 5(11), e13816.  
394 doi:10.1371/journal.pone.0013816

395 Boehme, L., Lovell, P., Biuw, M., Roquet, F., Nicholson, J., Thorpe, S. E., ... Fedak, M.  
396 (2009). Technical Note: Animal-borne CTD-Satellite Relay Data Loggers for real-time  
397 oceanographic data collection. *Ocean Science*, 5, 685–695.

398 Bolnick, D. I., Amarasekare, P., Araujo, M. S., R, B., Levine, J. M., Novak, M., ... Vasseur,  
399 D. A. (2011). Why intraspecific trait variation matters in community ecology. *Trends in*  
400 *Ecology and Evolution*, 26(4), 183–192. doi:10.1016/j.tree.2011.01.009

401 Bolnick, D. I., Svanbäck, R., Fordyce, J. A., Yang, L. H., Davis, J. M., Hulsey, C. D., &  
402 Forister, M. L. (2003). The ecology of individuals: incidence and implications of  
403 individual specialization. *The American Naturalist*, 161(1), 1–28.

404 Bradshaw, C. J. A., Hindell, M. A., Sumner, M. D., & Michael, K. J. (2004). Loyalty pays:  
405 potential life history consequences of fidelity to marine foraging regions by southern  
406 elephant seals. *Animal Behaviour*, *68*, 1349–1360.

407 Braham, M., Miller, T., Duerr, A. E., Lanzone, M., Fesnock, A., LaPre, L., ... Katzner, T.  
408 (2015). Home in the heat: Dramatic seasonal variation in home range of desert golden  
409 eagles informs management for renewable energy development. *Biological*  
410 *Conservation*, *186*, 225–232. doi:10.1016/j.biocon.2015.03.020

411 Calenge, C. (2015). Home Range Estimation in R : the adehabitatHR Package. Retrieved  
412 from <https://cran.r-project.org/web/packages/adehabitatHR/index.html>

413 Carman, V. G., Bruno, I., Maxwell, S., Álvarez, K., Albareda, D., Acha, E. M., & Campagna,  
414 C. (2016). Habitat use, site fidelity and conservation opportunities for juvenile  
415 loggerhead sea turtles in the Río de la Plata, Argentina. *Marine Biology*, *163*.  
416 doi:10.1007/s00227-015-2795-5

417 Clarke, M. F., da Silva, K. B., Lair, H., Pocklington, R., Kramer, D. L., & McLaughlin, R. L.  
418 (1993). Site familiarity affects escape behaviour of the eastern chipmunk, *Tamias*  
419 *striatus*. *Oikos*, *66*(3), 533–537.

420 Constable, A. J., Melbourne-Thomas, J., Corney, S. P., Arrigo, K. R., Barbraud, C., Barnes,  
421 D. K. A., ... Ziegler, P. (2014). Climate change and Southern Ocean ecosystems I : how  
422 changes in physical habitats directly affect marine biota. *Global Change Biology*.  
423 doi:10.1111/gcb.12623

424 Cooper, N. W., Sherry, T. W., & Marra, P. P. (2014). Modeling three-dimensional space use  
425 and overlap in birds. *Auk*, *131*, 681–693. doi:10.1642/AUK-14-17.1

426 Costa, D. P., Breed, G. A., & Robinson, P. W. (2012). New insights into pelagic migrations :  
427 implications for ecology and conservation. *Annual Review of Ecology, Evolution, and*  
428 *Systematics*, *43*, 73–96. doi:10.1146/annurev-ecolsys-102710-145045

429 Dall, S. R. X., Bell, A. M., Bolnick, D. I., & Ratnieks, F. L. W. (2012). An evolutionary  
430 ecology of individual differences. *Ecology Letters*, *15*, 1189–1198. doi:10.1111/j.1461-  
431 0248.2012.01846.x

432 de Bruyn, P. J. N., Tosh, C. A., Oosthuizen, W. C., Phalanndwa, M. V, & Bester, M. N.  
433 (2008). Temporary marking of unweaned southern elephant seal (*Mirounga leonina* L.)  
434 pups. *South African Journal of Wildlife Research*, *38*(2), 133–137.

435 Duong, T. (2016). Package “ks”. Retrieved from [https://cran.r-](https://cran.r-project.org/web/packages/ks/index.html)  
436 [project.org/web/packages/ks/index.html](https://cran.r-project.org/web/packages/ks/index.html)

437 Duong, T., & Hazelton, M. (2003). Plug-in bandwidth matrices for bivariate kernel density  
438 estimation. *Journal of Nonparametric Statistics*, *15*(1), 17–30.  
439 doi:10.1080/10485250306039

440 Farnsworth, M. L., Dickson, B. G., Zachmann, L. J., Hegeman, E. E., Cangelosi, A. R.,  
441 Jackson, T. G. J., & Scheib, A. F. (2015). Short-term space-use patterns of translocated  
442 Mojave desert tortoise in southern California. *PLoS ONE*, *10*(9), e0134250.  
443 doi:10.1371/journal.pone.0134250

444 Field, I. C., Harcourt, R. G., Boehme, L., Bruyn, P. J. N. De, Charrassin, J.-B., McMahon, C.  
445 R., ... Hindell, M. a. (2012). Refining instrument attachment on phocid seals. *Marine*  
446 *Mammal Science*, *28*(3), E325–E332. doi:10.1111/j.1748-7692.2011.00519.x

447 Forrester, T. D., Casady, D. S., & Wittmer, H. U. (2015). Home sweet home: fitness  
448 consequences of site familiarity in female black-tailed deer. *Behavioral Ecology and*  
449 *Sociobiology*, *69*, 603–612. doi:10.1007/s00265-014-1871-z

450 Freitas, C., Lydersen, C., Fedak, M., & Kovacs, K. M. (2008). A simple new algorithm to  
451 filter marine mammal Argos locations. *Marine Mammal Science*, *24*(2), 315–325.

452 Gannon, R., Payne, N. L., Suthers, I. M., Gray, C. A., Meulen, D. E. Van Der, & Taylor, M.  
453 D. (2015). Fine-scale movements , site fidelity and habitat use of an estuarine dependent

454 sparid. *Environmental Biology of Fishes*, 98, 1599–1608. doi:10.1007/s10641-015-0385-  
455 5

456 Greenwood, B. Y. P. J. (1980). Mating systems, philopatry and dispersal in birds and  
457 mammals. *Animal Behaviour*, 28, 1140–1162.

458 Grundling, A. (2014). *Ontogeny of southern elephant seal ( Mirounga leonina ) dive*  
459 *behaviour*. B.Sc. hons. thesis, University of Pretoria.

460 Guinet, C., Vacqu  -garcia, J., Picard, B., Bessigneul, G., Lebras, Y., Dragon, A. C., ...  
461 Bailleul, F. (2014). Southern elephant seal foraging success in relation to temperature  
462 and light conditions : insight into prey distribution. *Marine Ecology Progress Series*,  
463 499, 285–301. doi:10.3354/meps10660

464 Hindell, M. A., McMahon, C. R., Bester, M. N., Boehme, L., Costa, D., Fedak, M. A., ...  
465 Charrassin, J.-B. (2016). Circumpolar habitat use in the southern elephant seal:  
466 implications for foraging success and population trajectories. *Ecosphere*, 7(May),  
467 e01213. doi:10.1002/ecs2.1213

468 Hipfner, J. M. (2008). Matches and mismatches: ocean climate, prey phenology and breeding  
469 success in a zooplanktivorous seabird. *Marine Ecology Progress Series*, 368, 295–304.  
470 doi:10.3354/meps07603

471 Hofmeyr, G. J. G., Kirkman, S. P., Pistorius, P. A., & Bester, M. N. (2012). Natal site fidelity  
472 by breeding female southern elephant seals in relation to their history of participation in  
473 the winter haulout. *African Journal of Marine Science*, 34(3), 373–382.

474 H  ckst  dt, L. A., Koch, P. L., McDonald, B. I., Goebel, M. E., Crocker, D. E., & Costa, D. P.  
475 (2012). Stable isotope analyses reveal individual variability in the trophic ecology of a  
476 top marine predator, the southern elephant seal. *Oecologia*, 169(2), 395–406.  
477 doi:10.1007/s00442-011-2202-y

478 Jabour, J., Lea, M.-A., Goldsworthy, S. D., Melcher, G., Sykes, K., & Hindell, M. A. (2016).  
479 Marine telemetry and the conservation and management of risk to seal species in Canada  
480 and Australia. *Ocean Development & International Law*, 47(3), 255–271.  
481 doi:10.1080/00908320.2016.1194094

482 Kamil, A. C. (1983). Optimal foraging theory and the psychology of learning. *American*  
483 *Zoologist*, 23(2), 291–302.

484 Krebs, J. R. (1971). Territory and breeding density in the Great Tit, *Parus Major* L. *Ecology*,  
485 52(1), 2–22.

486 Le Boeuf, B. J., & Laws, R. M. (1994). *Elephant Seals: Population Ecology, Behavior, and*  
487 *Physiology*. Berkeley: University of California Press.  
488 doi:http://ark.cdlib.org/ark:/13030/ft7b69p131/

489 López-López, P., García-Ripollés, C. & Urios, V. (2014). Individual repeatability in timing  
490 and spatial flexibility of migration routes of trans-Saharan migratory raptors. *Current*  
491 *Zoology*, 60(5), 642-652.

492 Massie, P. P., McIntyre, T., Ryan, P. G., Bester, M. N., Bornemann, H., & Ansorge, I. J.  
493 (2016). The role of eddies in the diving behaviour of female southern elephant seals.  
494 *Polar Biology*, 39, 297–307. doi:10.1007/s00300-015-1782-0

495 Mazor, T., Beger, M., McGowan, J., Possingham, H. P., & Kark, S. (2016). The value of  
496 migration information for conservation prioritization of sea turtles in the Mediterranean.  
497 *Global Ecology and Biogeography*, 25, 540–552. doi:10.1111/geb.12434

498 McFarlane Tranquilla, L. A., Montevecchi, W. A., Fifield, D. A., Hedd, A., Gaston, A. J.,  
499 Robertson, G. J., & Phillips, R. A. (2014). Individual winter movement strategies in two  
500 species of Murre (*Uria* spp.) in the Northwest Atlantic. *PLoS ONE*, 9(4).  
501 doi:10.1371/journal.pone.0090583

502 McIntyre, T., Ansorge, I. J., Bornemann, H., Plötz, J., Tosh, C. A., & Bester, M. N. (2011).  
503 Elephant seal dive behaviour is influenced by ocean temperature: implications for  
504 climate change impacts on an ocean predator. *Marine Ecology Progress Series*, *441*,  
505 257–272. doi:10.3354/meps09383

506 McIntyre, T., Bornemann, H., Plötz, J., Tosh, C. A., & Bester, M. N. (2011). Water column  
507 use and forage strategies of female southern elephant seals from Marion Island. *Marine*  
508 *Biology*, *158*(9), 2125–2139. doi:10.1007/s00227-011-1719-2

509 McMahan, C. R., Field, I. C., Bradshaw, C. J. A., White, G. C., & Hindell, M. A. (2008).  
510 Tracking and data–logging devices attached to elephant seals do not affect individual  
511 mass gain or survival. *Journal of Experimental Marine Biology and Ecology*, *360*, 71–  
512 77.

513 Merkle, J. A., Cherry, S. G., & Fortin, D. (2015). Bison distribution under conflicting  
514 foraging strategies: site fidelity vs. energy maximization. *Ecology*, *96*(7), 1793–1801.

515 Mingozi, T., Mencacci, R., Cerritelli, G., Giunchi, D., & Luschi, P. (2016). Living between  
516 widely separated areas: Long-term monitoring of Mediterranean loggerhead turtles  
517 sheds light on cryptic aspects of females spatial ecology. *Journal of Experimental*  
518 *Marine Biology and Ecology*, *485*, 8–17. doi:10.1016/j.jembe.2016.08.007

519 Newell, G. R. (1999). Responses of Lumholtz’s tree-kangaroo ( *Dendrolagus lumholtzi* ) to  
520 loss of habitat within a tropical rainforest fragment. *Biological Conservation*, *91*, 181–  
521 189.

522 Oosthuizen, W. C., Bester, M. N., Altwegg, R., McIntyre, T., & de Bruyn, P. J. N. (2015).  
523 Decomposing the variance in southern elephant seal weaning mass: partitioning  
524 environmental signals and maternal effects. *Ecosphere*, *6*(August), 1–22.

525 Piper, W. H. (2011). Making habitat selection more “familiar” : a review. *Behavioral Ecology*  
526 *and Sociobiology*, *65*, 1329–1351. doi:10.1007/s00265-011-1195-1

527 Postma, M., Bester, M. N., & De Bruyn, P. J. N. (2013). Spatial variation in female southern  
528 elephant seal mass change assessed by an accurate non-invasive photogrammetry  
529 method. *Antarctic Science*, 25(6), 731–740. doi:10.1017/S0954102013000059

530 R Core Team (2016). R: A language and environment for statistical computing. R Foundation  
531 for Statistical Computing, Vienna, Austria. Retrieved from <http://www.r-project.org>

532 Shields, W. M., Cook, J. R., Hebblethwaite, M. L., & Wiles-Ehmann, S. S. (1988). Ideal free  
533 coloniality in the swallows. In C. N. Slobodchikoff (Ed.), *The Ecology of Social*  
534 *Behavior* (pp. 189–228). San Diego: Academic Press.

535 Simmons, S. E. (2008). *Environmental and individual effects on the foraging success of an*  
536 *apex predator, the northern elephant seal (Mirounga angustirostris)*. Ph.D. thesis,  
537 University of California, Santa Cruz.

538 Simpfendorfer, C. A., Olsen, E. M., Heupel, M. R., & Moland, E. (2012). Three-dimensional  
539 kernel utilization distributions improve estimates of space use in aquatic animals.  
540 *Canadian Journal of Fisheries and Aquatic Sciences*, 69, 565–572. doi:10.1139/F2011-  
541 179

542 Stillfried, M., Belant, J. L., Svoboda, N. J., Beyer, D. E., & Kramer-Schadt, S. (2015). When  
543 top predators become prey: Black bears alter movement behaviour in response to  
544 hunting pressure. *Behavioural Processes*, 120, 30–39. doi:10.1016/j.beproc.2015.08.003

545 Swart, S., & Speich, J. (2010). An altimetry-based gravest empirical mode south of Africa: 2.  
546 Dynamic nature of the Antarctic Circumpolar Current fronts. *Journal of Geophysical*  
547 *Research*, 115.

548 Switzer, P. V. (1993). Site fidelity in predictable and unpredictable habitats. *Evolutionary*  
549 *Ecology*, 7, 533–555.

550 Tosh, C. A., de Bruyn, P. J. N., Steyn, J., Bornemann, H., van den Hoff, J., Stewart, B. S., ...  
551 Bester, M. N. (2015). The importance of seasonal sea surface height anomalies for



552 foraging juvenile southern elephant seals. *Marine Biology*, 162(10), 2131–2140.  
553 doi:10.1007/s00227-015-2743-4

554 Tosh, C. A., Steyn, J., Bornemann, H., van den Hoff, J., Stewart, B., Plötz, J., & Bester, M.  
555 (2012). Marine habitats of juvenile southern elephant seals from Marion Island. *Aquatic*  
556 *Biology*, 17(1), 71–79. doi:10.3354/ab00463

557 Tracey, J. A., Sheppard, J., Zhu, J., Wei, F., Swaisgood, R. R., & Fisher, R. N. (2014).  
558 Movement-Based estimation and visualization of space use in 3D for wildlife ecology  
559 and conservation. *PLoS ONE*, 9(7), e101205. doi:10.1371/journal.pone.0101205

560 Vander Zanden, H. B., Bolten, A. B., Tucker, A. D., Hart, K. M., Lamont, M. M., Fujisaki, I.,  
561 ... Bjorndal, K. A. (2016). Biomarkers reveal sea turtles remained in oiled areas  
562 following the Deepwater Horizon oil spill. *Ecological Applications*, 26(7), 2145–2155.  
563 doi:10.1002/eap.1366

564 Vardanis, Y., Nilsson, J.-Å., Klaassen, R. H. G., Strandberg, R. & Alerstam, T. (2016)  
565 Consistency in long-distance bird migration: contrasting patterns in time and space for  
566 two raptors. *Animal Behaviour*, 113, 177-187.

567 Vermeulen, E., Balbiano, A., Belenguer, F., Colombil, D., Failla, M., Intrieri, E., & Bräger,  
568 S. (2016). Site-fidelity and movement patterns of bottlenose dolphins ( *Tursiops*  
569 *truncatus* ) in central Argentina : essential information for effective conservation.  
570 *Aquatic Conservation: Marine and Freshwater Ecosystems*, (January 2015).  
571 doi:10.1002/aqc.2618

572 Wakefield, E. D., Cleasby, I. R., Bearhop, S., Bodey, T. W., Davies, R. D., Miller, P. I., ...  
573 Hamer, K. C. (2015). Long-term individual foraging site fidelity — why some gannets  
574 don' t change their spots. *Ecology*, 96(11), 3058–3074.

575 Ward, J. H. J. (1963). Hierarchical grouping to optimize an objective function. *Journal of the*  
576 *American Statistical Association*, 58(301), 236–244.

577 Weber, N., Duengkae, P., Fahr, J., Dechmann, D. K. N., Phengsakul, P., Khumbucha, W., ...  
578 Newman, S. (2015). High-resolution GPS tracking of Lyle's flying fox between temples  
579 and orchards in central Thailand. *The Journal of Wildlife Management*, 79(6), 957–968.  
580 doi:10.1002/jwmg.904

581 Wege, M., Tosh, C. A., de Bruyn, P. J. N., & Bester, M. N. (2016). Cross-seasonal foraging  
582 site fidelity of subantarctic fur seals: implications for marine conservation areas. *Marine*  
583 *Ecology Progress Series*, 554, 225–239. doi:10.3354/meps11798

584 Whisson, D. A., Dixon, V., Taylor, M. L., & Melzer, A. (2016). Failure to respond to food  
585 resource decline has catastrophic consequences for koalas in a high-density population  
586 in southern Australia. *PLoS ONE*, 11(1), 1–12. doi:10.1371/journal.pone.0144348

587 Wolak, M. E., Fairbairn, D. J., & Paulsen, Y. R. (2012). Guidelines for estimating  
588 repeatability. *Methods in Ecology and Evolution*, 3, 129–137. doi:10.1111/j.2041-  
589 210X.2011.00125.x

590

591

592 **Tables**593 **Table 1:** Elephant seals tracked over multiple migrations.

Tag	Sex	N	Age at deployments	Years successfully tracked	Inter-annual UD overlap	Multi-year UD overlap
GG335	F	6	7,8,9,10,11,12	2007,2008,2009,2010,2011,2012	0.65 ± 0.17	0.57 ± 0.15
OO021	F	3	5,6,7	2007,2008,2009	0.91 ± 0.03	0.92
OO052	M	5	4,5,6,9,11	2006,2007,2008,2011,2013	0.74 ± 0.09	0.64 ± 0.19
PO043	F	3	8,9,10	2007,2008,2009	0.69 ± 0.13	0.48
PO225	M	2	8,12	2007,2011	-	0.74
RR217	F	2	4,6	2009,2011	-	0.31
WW061	F	4	7,10,11,12	2008,2011,2012,2013	0.87 ± 0.09	0.58 ± 0.19
YY039	F	2	4,7	2008,2011	-	0.19
YY189	F	7	2,3,4,5,6,8,9	2006,2007,2008,2009,2010,2012,2013	0.71 ± 0.09	0.64 ± 0.19

594 Mean ( $\pm$  SD) overlap in inter-annual utilization distributions, as well as mean ( $\pm$  SD) overlap  
595 in multiple-year utilization distributions, are reported. Only tracks over periods of more than  
596 30 days (median: 223, range: 38 – 292) were included.

597 **Table 2:** Inter-annual and multi-year overlap in 95% and 50% three-dimensional utilization  
 598 distributions (3D-UDs) for southern elephant seals.

<i>Tag</i>	<i>N</i>	<b><u>95% 3D-UD</u></b>			
		<b>Inter-annual</b>		<b>Multi-year</b>	
		<b><i>Day</i></b>	<b><i>Night</i></b>	<b><i>Day</i></b>	<b><i>Night</i></b>
<b>GG335</b>	6	0.43 ± 0.1	0.51 ± 0.15	0.41 ± 0.15	0.48 ± 0.11
<b>OO021</b>	3	0.56 ± 0.09	0.58 ± 0.14	0.38	0.5
<b>OO052</b>	5	0.66 ± 0.2	0.63 ± 0.24	0.47 ± 0.16	0.45 ± 0.13
<b>PO043</b>	3	0.71	0.71	-	-
<b>PO225</b>	2	-	-	0.3	0.29
<b>RR217</b>	2	-	-	0.23	0.25
<b>WW061</b>	4	0.56	0.66	0.28 ± 0.07	0.35 ± 0.01
<b>YY039</b>	2	-	-	0.09	0.04
<b>YY189</b>	7	0.61 ± 0.14	0.62 ± 0.11	0.51 ± 0.17	0.52 ± 0.15
		<b>0.54 ± 0.15</b>	<b>0.57 ± 0.15</b>	<b>0.45 ± 0.17</b>	<b>0.47 ± 0.15</b>
<b><u>50% 3D-UD</u></b>					
<b>GG335</b>	6	0.12 ± 0.07	0.25 ± 0.22	0.14 ± 0.17	0.19 ± 0.15
<b>OO021</b>	3	0.38 ± 0.05	0.44 ± 0.02	0.21	0.26
<b>OO052</b>	5	0.57 ± 0.04	0.62 ± 0.41	0.29 ± 0.31	0.24 ± 0.27
<b>PO043</b>	3	0.62	0.62	-	-
<b>PO225</b>	2	-	-	0.07	0.08
<b>RR217</b>	2	-	-	0	0
<b>WW061</b>	4	0.22	0.56	0.02 ± 0.03	0
<b>YY039</b>	2	-	-	0	0
<b>YY189</b>	7	0.37 ± 0.22	0.44 ± 0.14	0.22 ± 0.2	0.3 ± 0.19
		<b>0.31 ± 0.21</b>	<b>0.39 ± 0.23</b>	<b>0.2 ± 0.22</b>	<b>0.22 ± 0.2</b>

600 **Table 3:** Repeatability (*r*) values of habitat use parameters.

<b>Parameter</b>	<b>Repeatability (<i>r</i>)</b>
Daytime 95% 3D UD (kernel volume)	0.62
Night-time 95% 3D UD (kernel volume)	0.60
Daytime 50% 3D UD (kernel volume)	0.61
Night-time 50% 3D UD (kernel volume)	0.67
Maximum distance travelled from MI	0.62
Bearing of maximum distance point from MI	0.53

601 Repeatability (*r*) values were calculated from intra-class correlation coefficients.

602

603 **Figure captions.**

604

605 **Figure 1:** Post-moult track locations for nine southern elephant seals tracked over multiple  
606 years. The grey-shaded polygon represents the overlap between the 95% kernel density  
607 utilization distributions for all tracks.

608

609 **Figure 2:** Three-dimensional kernel density utilization distributions (3D-UDs) over multiple  
610 years for five southern elephant seals. Darker shading indicates 50% 3D-UDs and lighter  
611 shading 95% 3D-UDs.

612

613 **Figure 3:** Hierarchical cluster analysis of migration strategies of southern elephant seals  
614 tracked over multiple post-moult migrations, illustrating the three identified behavioural  
615 clusters (C1-C3). Locations of migrations identified in each of the clusters are presented in  
616 the three maps. Positions of all track locations not within a particular cluster are illustrated in  
617 light grey. PO225 is represented in only one migration, due to a comparatively low number of  
618 recorded daytime dive depths in 2007. STF = Subtropical Front, SAF = Subantarctic Front,  
619 APF = Antarctic Polar Front. Frontal locations were determined from Swart & Speich (2010).

620

## **Acknowledgements**

We are particularly indebted to a number of field assistants who contributed to the instrumenting of focal animals, especially Chris Oosthuizen, Ryan Reisinger, Mia Wege, Martin Postma, Derek van der Merwe, Jean Purdon, Nico Lübcker and Wiam Haddad. The Department of Science and Technology through the National Research Foundation (South Africa), the South African National Antarctic Programme and the Alfred-Wegener-Institut Helmholtz-Zentrum für Polar und Meeresforschung (Germany) provided financial and logistical support. The study further benefited from the Marine Mammals Exploring the Oceans Pole to Pole (MEOP) activity under the International Polar Year. We also wish to thank two anonymous reviewers for their constructive comments that helped improve the manuscript.

Figure 1

[Click here to download high resolution image](#)

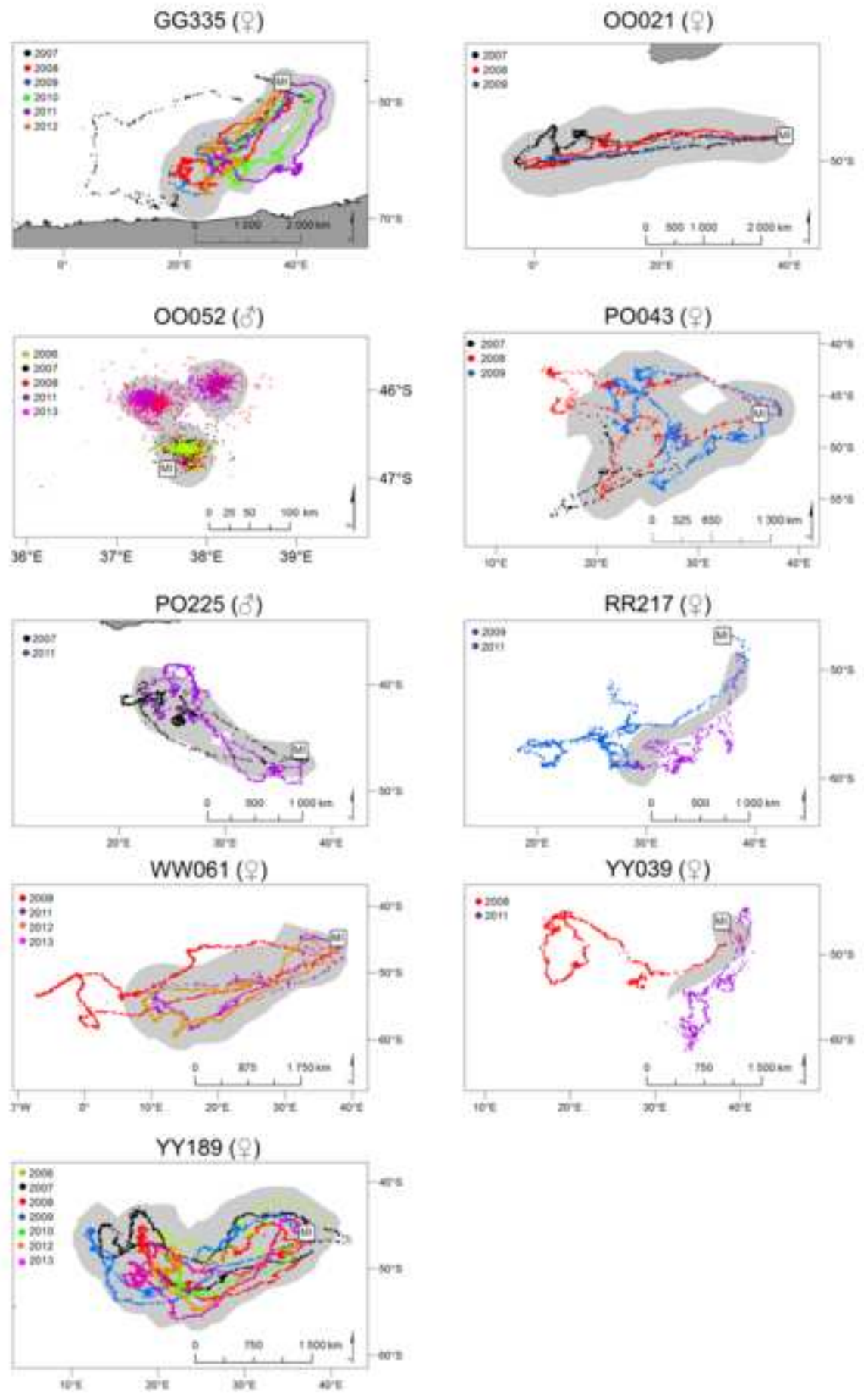
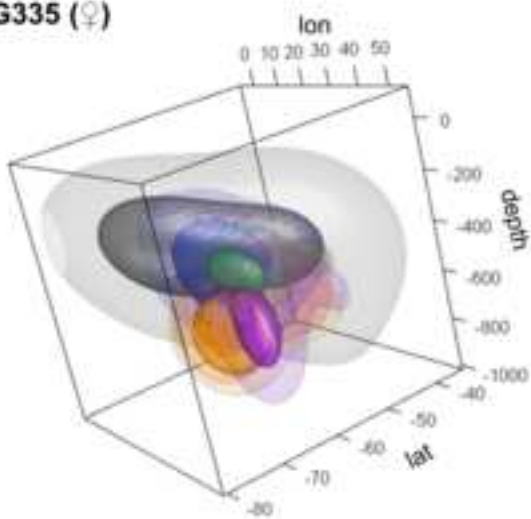


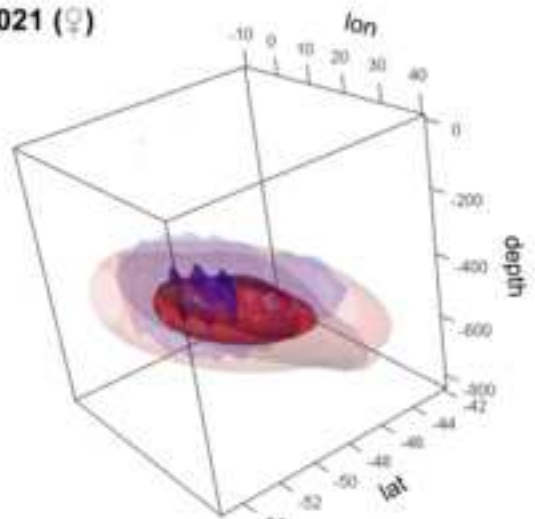


Figure 2  
[Click here to download high resolution image](#)

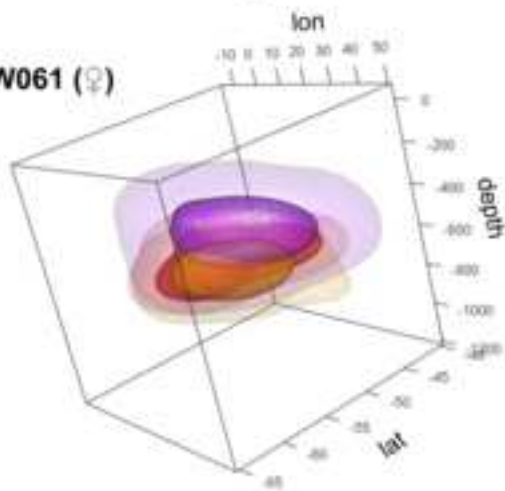
GG335 (♀)



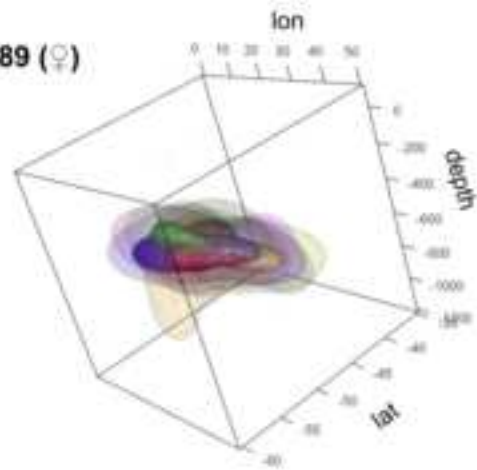
OO021 (♀)



WW061 (♀)



YY189 (♀)



PO225 (♂)

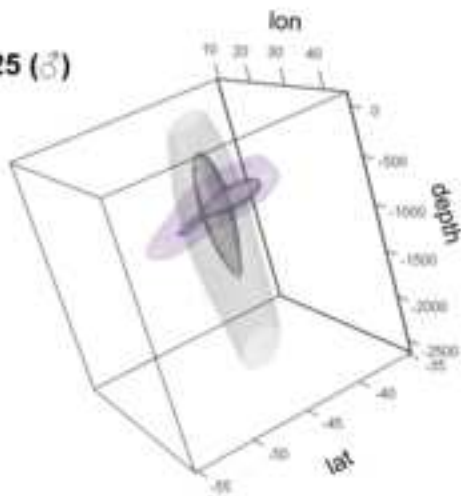


Figure 3  
[Click here to download high resolution image](#)

