



eddy4R 0.2.0: a DevOps model for community-extensible processing and analysis of eddy-covariance data based on R, Git, Docker, and HDF5

Stefan Metzger^{1,2}, David Durden¹, Cove Sturtevant¹, Hongyan Luo¹, Natchaya Pingingtha-Durden¹, Torsten Sachs³, Andrei Serafimovich³, Jörg Hartmann⁴, Jiahong Li⁵, Ke Xu², and Ankur R. Desai²

¹National Ecological Observatory Network, Battelle, 1685 38th Street, Boulder, CO 80301, USA

²University of Wisconsin-Madison, Dept. of Atmospheric and Oceanic Sciences, 1225 West Dayton Street, Madison, WI 53706, USA

³GFZ German Research Centre for Geosciences, Telegrafenberg, 14473 Potsdam, Germany

⁴Alfred Wegener Institute – Helmholtz Centre for Polar and Marine Research, Am Handelshafen 12, 27570 Bremerhaven, Germany

⁵LI-COR Biosciences, 4647 Superior Street, Lincoln, NE 68504, USA

Correspondence to: Stefan Metzger (smetzger@battelleecology.org)

Received: 27 December 2016 – Discussion started: 1 February 2017

Revised: 3 July 2017 – Accepted: 6 July 2017 – Published: 31 August 2017

Abstract. Large differences in instrumentation, site setup, data format, and operating system stymie the adoption of a universal computational environment for processing and analyzing eddy-covariance (EC) data. This results in limited software applicability and extensibility in addition to often substantial inconsistencies in flux estimates. Addressing these concerns, this paper presents the systematic development of portable, reproducible, and extensible EC software achieved by adopting a development and systems operation (DevOps) approach. This software development model is used for the creation of the eddy4R family of EC code packages in the open-source R language for statistical computing. These packages are community developed, iterated via the Git distributed version control system, and wrapped into a portable and reproducible Docker filesystem that is independent of the underlying host operating system. The HDF5 hierarchical data format then provides a streamlined mechanism for highly compressed and fully self-documented data ingest and output.

The usefulness of the DevOps approach was evaluated for three test applications. First, the resultant EC processing software was used to analyze standard flux tower data from the first EC instruments installed at a National Ecological Observatory (NEON) field site. Second, through an aircraft test application, we demonstrate the modular exten-

sibility of eddy4R to analyze EC data from other platforms. Third, an intercomparison with commercial-grade software showed excellent agreement ($R^2 = 1.0$ for CO₂ flux). In conjunction with this study, a Docker image containing the first two eddy4R packages and an executable example workflow, as well as first NEON EC data products are released publicly. We conclude by describing the work remaining to arrive at the automated generation of science-grade EC fluxes and benefits to the science community at large.

This software development model is applicable beyond EC and more generally builds the capacity to deploy complex algorithms developed by scientists in an efficient and scalable manner. In addition, modularity permits meeting project milestones while retaining extensibility with time.

1 Introduction

Answering grand challenges in Earth system science and ecology requires combining information from hierarchies of environmental observations (tower, aircraft, satellite; Raupach et al., 2005; Running et al., 1999; Turner et al., 2004). Eddy-covariance (EC) measurements serve as crucial observations in this hierarchy to study landscape-scale surface-

atmosphere exchange processes that both inform and anchor Earth system models. Networks of EC towers such as FLUXNET (Baldocchi et al., 2001), AmeriFlux (Law, 2007), ICOS (Sulkava et al., 2011), and others are vital for providing the necessary distributed observations covering the climate space, with the longest running towers now reaching two decades of observations.

A current challenge for EC tower networks in informing regional- and continental-scale processes is instrument and computational compatibility. The computations involved in EC processing are complex and developmentally dynamic, making code portability, extensibility, and documentation paramount. Much progress has been made in developing community standards for processing algorithms and workflows (Aubinet et al., 2012; Papale et al., 2006). Many authors have included code in publication or have developed sharable tools (e.g., EddyPro and TK3 by Fratini and Mauder, 2014; EddyUH by Mammarella et al., 2016; EdiRe by Clement et al., 2009), despite the significant and often unfunded effort required to adequately document and generalize code. Still, large differences in instrumentation, site setup, data format, and operating systems stymie the adoption of a universal EC processing environment: one that is portable, reproducible, and extensible to allow tailored workflows that incorporate additional data streams, to automate and scale processing across large compute facilities, or to inject additional algorithms that address specific needs or synergistic research questions. In 50% of published scientific code, one cannot even replicate the necessary software dependencies (Collberg et al., 2014), and even widely used and well-documented EC processing software packages have shown substantial inconsistencies in flux estimates (e.g., Fratini and Mauder, 2014). A universal EC processing environment that enables these capabilities would better allow research groups to tailor existing software to their needs (and contribute new algorithms) instead of recreating code or kludging together multiple software outputs to realize an algorithmic chain for their data analytics.

The US-based National Ecological Observatory Network (NEON), once fully operational, will represent the largest single-provider EC tower network globally, with a standardized measurement suite designed explicitly for cross-site comparability and analysis of continental-scale ecological change (Schimel et al., 2007). This capability is accompanied by a strong need for a flexible and scalable processing framework that can incorporate specific data streams, take advantage of close alignment of hardware and software for problem tracking and resolution, provide traceability and reproducibility of outputs, and seamlessly integrate distributed and dynamic community-developed code (written by multiple people in multiple places) within existing cyberinfrastructure (CI). In sum, NEON needs what the EC community is currently lacking.

The question we ask in this paper is how do we collaboratively create portable, reproducible, open-source, scalable,

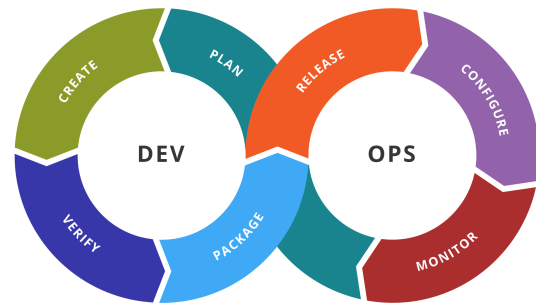


Figure 1. Stages of the general DevOps workflow (source: Kharnagy via Wikimedia Commons – CC BY-SA 4.0).

and extensible software that improves reliability and comparability of EC data products. Here, we describe and demonstrate a developmental model that enables these capabilities by embracing a development and systems operation (DevOps) approach. DevOps is a philosophy arising from the software development community that emphasizes collaboration among developers and operators to continuously iterate the development, building, testing, packaging, and release of software (Erich et al., 2014; Loukides, 2012, Fig. 1). Tools are adopted that control and automate these processes, allowing distributed development and rapid iteration. Applied to the scientific community, developers are the multitude of scientists creating and improving the scientific algorithms that form the developmentally dynamic community standard. Operators are those deploying the algorithms to process and analyze data and can be the same or different people as those creating the algorithms. A key aspect of DevOps is the recipe- or script-based generation and packaging of computation environments rather than abstracted documentation, which improves accessibility, extensibility, and reproducibility of scientific software (Boettiger, 2015; Clark et al., 2014). The recipe automates the loading of the software including all dependencies so that the most significant hurdle of reproducing the computational environment is overcome. At the same time, the recipe serves as explicit documentation, and can be easily extended (added to or changed), shared, and versioned. The entire computational environment including any necessary data is packaged into Docker images that work identically across different computers and operating systems, can be deployed at scale, and archived for ultimate reproducibility.

In the following, we present this framework and demonstrate its success in producing EC data products via a family of modular, open-source R packages wrapped in Docker images. We emphasize that this paper is not a presentation of EC processing software (although this is the ultimate application). Rather, it is a presentation of the development model that facilitates portability, reproducibility, and extensibility of EC processing software. In the following, Sect. 2 describes the DevOps framework, and Sect. 3 provides three

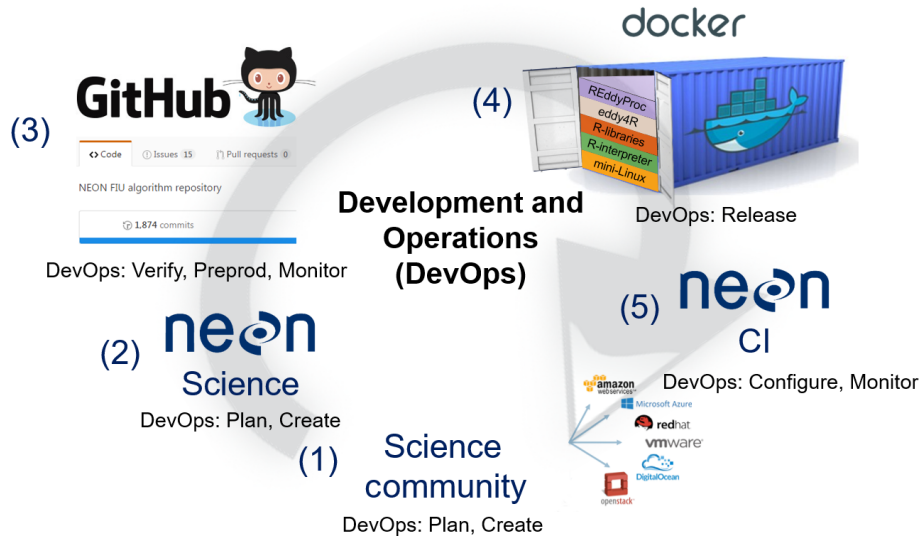


Figure 2. NEON-specific DevOps workflow, with references to corresponding steps in Fig. 1. Please see text in Sect. 2 for a detailed explanation.

core tests of the applicability of this framework: (1) processing tower-based flux data, including NEON’s first set of EC data, (2) processing and footprint modeling of aircraft-based flux data, and (3) a software cross validation. Sect. 4 summarizes the work remaining to operationally produce EC fluxes from 47 NEON sites and provides an outlook on future capabilities and science community benefits.

2 The development and operations (DevOps) model

DevOps promotes collaboration and tight integration between software development, testing, and operational deployment by following a core workflow (e.g., Wurster et al., 2015): Plan, Create, Verify, Package, Release, Configure, and Monitor. The text below describes these stages and shows the general sequence and overlap of these stages between software developers (Dev) and operators (Ops).

The Plan stage involves focusing and prioritizing new software features or capabilities based on their enhancement of value. The Create stage is the activity of designing and writing the code that delivers a new feature. The Verify stage tests the new software feature against established standards for accuracy and performance (e.g., does it unexpectedly alter the output of preexisting features? Does it produce the expected result?). The Package stage involves the compilation of the code once it is ready for deployment, including all data and software dependencies, and gathers necessary approvals. The Release stage deploys the software into production. The Configure stage involves supplying and configuring the computational infrastructure required to operate the code at scale, including storage, database operations, and networking. Finally, the Monitor stage observes and tracks the use, performance, and end-user impact of the release. Vari-

ants of this workflow exist (e.g., Chen, 2015), but the general components and sequence are retained. In addition, there is no single set of tools accompanying the DevOps approach. Rather, many tools exist that facilitate the execution of one or more of these workflow steps, often through automation.

NEON’s DevOps framework consists of a periodic sequence (Fig. 2) that incorporates these workflow steps. For this purpose, we define NEON Science as personnel working directly on the NEON project, and the science community, regardless of whether they also work on the NEON project, as anyone producing or using data, algorithms, or research products related to the NEON data themes (atmosphere; biogeochemistry; ecohydrology; land cover and processes; organisms, populations, and communities): the science community contributes algorithms and best practices (1). Implicitly or explicitly, this embodies the DevOps Plan stage – the algorithms most valued by the community are being incorporated. Together with NEON Science (2), these algorithms are coded in the open-source R computational environment (DevOps Create stage). DevOps Verify (testing) and Package (packaging) are performed as the code is compiled into eddy4R packages via the GitHub distributed version control system (3). NEON Science releases an eddy4R version from GitHub, which automatically builds an eddy4R–Docker image on DockerHub as specified in a “Dockerfile” (4; DevOps Release stage). The eddy4R–Docker image is immediately available for deployment by NEON CI (5; DevOps Configure and Monitor stages), the science community (1) and NEON Science (2) alike. Here, the DevOps Configure (computational resource allocation) and Monitor stages occur. Monitoring of end-user experience is also performed in GitHub (3) via issue tracking. This DevOps cycle can be repeated for continuous development and integration of requests and fu-

ture methodological improvements by the scientific community, resulting in the next release. Two principal types of releases are provided: stable versions are tagged with “0.2.0”, “0.2.1”, etc., and the most recent development built is tagged with “latest”. Thus, the DevOps model serves as the framework within which the scientific community can efficiently and robustly collaborate to produce, manage, and iterate software. Through choosing appropriate tools to implement the DevOps workflow steps, the reproducibility, scalability, and extensibility needs of software development communities (including EC) can be met.

In the following, we describe the key components and tools of this NEON-specific DevOps model, namely the eddy4R family of code packages (Sect. 2.1), Git-based distributed code development (Sect. 2.2), packaging of the computational environment in Docker images (Sect. 2.3), hierarchical data formats (Sect. 2.4), integration with NEON’s CI (Sect. 2.5), and installation and deployment (Sect. 2.6).

2.1 The eddy4R family of R packages (DevOps Plan and Create)

eddy4R is a family of open-source packages for EC raw data processing, analyses, and modeling in the R language for statistical computing (R Core Team, 2016). Forming the DevOps Plan and Create stages, it is being developed by NEON scientists with wide input from the micrometeorological community (e.g., De Roo et al., 2014; Kohnert et al., 2015; Lee et al., 2015; Metzger et al., 2012, 2013, 2016; Sachs et al., 2014; Salmon et al., 2015; Serafimovich et al., 2013; Starckenburg et al., 2016; Vaughan et al., 2016; Xu et al., 2017). eddy4R currently consists of four packages: eddy4R.base, eddy4R.qaqc, eddy4R.turb, and eddy4R.erf. Of these, eddy4R.base and eddy4R.qaqc are published here in conjunction with NEON’s release of EC level 1 data products (https://w3id.org/smetzger/Metzger-et-al_2017_eddy4R-Docker/portal/0.2.0): descriptive statistics of calibrated instrument output. In addition, previews of eddy4R.turb and eddy4R.erf are provided, which will be published along NEON’s upcoming release of EC level 4 data products (derived quality-controlled fluxes and related variables). The development of two additional R packages has started (eddy4R.stor and eddy4R.ucrt, which provide functionalities for storage flux computation and uncertainty quantification, respectively). These packages are not covered here, and will be published once available.

Each eddy4R package consists of a hierarchical set of reusable definition functions, wrapper functions, and workflows. Following best practices, eddy4R is written in controlled and strictly hierarchical terminology consisting of base names and modifiers, which ensures modular extensibility over time. Interactive documentation is provided through the use of Roxygen tags (<http://roxygen.org/>) during development and follows the Comprehensive R Archive Network (CRAN; <https://cran.r-project.org/>) guidelines for package

dissemination. In addition, expanded documentation is available in the form of Algorithm Theoretical Basis Documents from the NEON data portal (https://w3id.org/smetzger/Metzger-et-al_2017_eddy4R-Docker/portal/0.2.0).

EC data processing consists of employing a sequence of model algorithms. These often originate from scientific subfields with corresponding publications, and eddy4R provides an integrative, yet modular and extensible, framework for their concerted application and continued development: eddy4R.base provides natural constants and basic functions for usability, regularization, transformation, lag-correction, aggregation, and unit conversion, ensuring consistency of internal units at any point in the workflow. Next, eddy4R.qaqc provides the general quality assurance and quality control (QA/QC) tests of Taylor and Loescher (2013), along the Smith et al. (2014) model for tracking quality information in large datasets, and functions for de-spiking (Brock, 1986; Fratini and Mauder, 2014; Mauder et al., 2013; Mauder and Foken, 2015; Metzger et al., 2012; Vickers and Mahrt, 1997). eddy4R.turb provides standard, Reynolds-decomposed turbulent flux calculation (Foken, 2017), accompanied by models for planar fit transformation (Wilczak et al., 2001) and spectral correction (Nordbo and Katul, 2012). Additional functionalities include Fourier transform, the determination of detection limit (Billesbach, 2011), integral length scales, and statistical sampling errors (Lenschow et al., 1994), and flux-specific QA/QC models (Foken and Wichura, 1996; Vickers and Mahrt, 1997). Also, basic scaling variables, atmospheric stability and roughness length (Stull, 1988), as well as the flux footprint (Kljun et al., 2015; Kormann and Meixner, 2001; Metzger et al., 2012) can be determined. Lastly, eddy4R.erf provides time–frequency decomposed flux processing and data-mining functionalities to determine an environmental response function model and project the flux fields underlying the EC observations (Metzger et al., 2013; Xu et al., 2017).

eddy4R can be used with a fully adaptive single-pass workflow (Sect. 3.1), which makes it computationally efficient compared to the multiple passes required by other flux processing schemes. In addition, eddy4R is fully parallelized and memory efficient, leveraging R’s snowfall parallelization (<https://cran.r-project.org/package=snowfall>) and ff file-backed object (<https://cran.r-project.org/package=ff>) facilities, respectively. This makes eddy4R seamlessly scalable from local laptop development to deployment across massively parallel computing facilities. Lastly, its unique modularity permits straightforward adjustments (extensibility) and versioning as science and/or hardware progresses.

2.2 Git distributed version control (DevOps Verify and Package)

The eddy4R source code resides on a version-controlled Git repository on the hosting service GitHub (<https://github.com/>). In general, a developer community uses a version con-

trol system to manage and track different states of their works over time. GitHub provides distributed version control and has become widely used by scientific research groups because it is free, open-source, and provides several features that make it useful for managing artifacts of scientific research (Ram, 2013).

Git allows multiple users and developers to simultaneously access and collaborate on a remote repository by means of independent “forks” or replicas of the entire repository (Paarsch and Golyaev, 2016). Figure 3 shows NEON’s Git workflow: at any given time (1) the official, stable eddy4R source code resides on NEON’s GitHub repository. A user can install the eddy4R packages directly from there, and (2) a developer can “fork” or copy the repository and create “branches” for modification. After (3) “committing” or creating a new feature, the developer (4) can propose the feature for inclusion in the official eddy4R source code by issuing a pull request to (5) NEON’s change control board. After (6) thorough review and all prior test cases reproducing benchmark results (DevOps Verify stage), the feature can be “merged” or integrated into the next release of (1) the official, stable eddy4R source code (DevOps Package stage). This cycle can be repeated to accommodate requests and future developments, resulting in subsequent releases. Including a test case for new code is strongly encouraged to ensure sustainability over time but is not mandatory. The developers can periodically update their forks from the remote repository, ensuring that they always work on basis of the most recent eddy4R source code.

The ultimate advantages of Git are provenance, reproducibility, and extensibility: every copy of the code repository includes the complete history of all changes and authorship that can be viewed and searched by anyone (Ram, 2013). This allows developers to build from any stage of the versioned project and makes it easy to collaborate as an integrated scientific community. We note that the DevOps workflow is robust to the business viability of the particular tools used for implementation. Git is simply one instance of a version control system which could be replaced with another similar tool should Git fail at some point in the future.

2.3 Docker image build and deployment (DevOps Release)

Facilitating the DevOps Release stage, Docker images (<https://www.docker.com/what-docker>) wrap a piece of software in a complete filesystem that contains only the minimal context an application needs to run: code, runtime, system libraries, and tools. This guarantees that it always performs the same, regardless of the compute environment it is deployed in (i.e., ultimate reproducibility). Compared to the similar but more cumbersome virtual machine approach, a Docker image is an order or magnitude smaller (eddy4R–Docker: 2 GB without example data). Also, by running as native processes, it bypasses the virtual machine overhead. Docker is used by

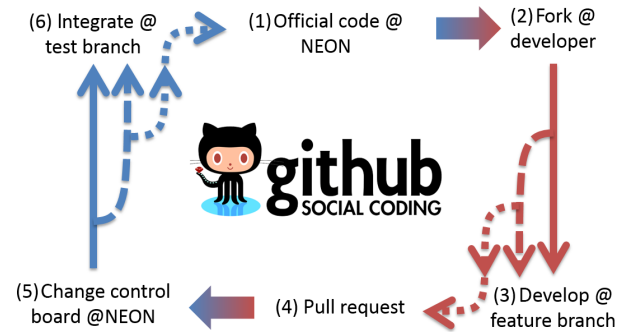


Figure 3. NEON’s Git workflow. Please see text in Sect. 2.2 for a detailed explanation.

many organizations (e.g., National Center for Atmospheric Research, National Snow and Ice Data Center, NSF Agave API) and widely supported across large-scale cloud compute environments (e.g., Amazon EC2 Container Service, Google Container Engine, NSF Xsede). It is particularly well suited to NEON’s DevOps strategy: combining development, operation, and quality assurance to enable creating, testing, deploying, and updating scientific software rapidly and reliably (Fig. 2).

Docker can build images automatically by reading the instructions from a Dockerfile. A Dockerfile is a text document that contains all the instructions a user would call on the command line to assemble an image. Using, e.g., a cloud hosting platform like DockerHub (<https://hub.docker.com/>), the image build, versioning, and distribution can be automated. This is realized through executing the series of command-line instructions defined in the Dockerfile whenever a new eddy4R source code version is available on GitHub. A key feature of eddy4R–Docker is that it builds upon “Rocker” prebuilt Docker images, maintained by the rOpenSci group (<https://ropensci.org/>). This ensures access to stable, up-to-date base images containing R and a variety of packages commonly used. The eddy4R–Docker image (0.2.0) released in this study was built based on the rocker/ropensci/latest image containing R (3.4.0; <https://hub.docker.com/r/rocker/ropensci/builds/>). As specified in the eddy4R Dockerfile, our R packages eddy4R.base (0.2.0) and eddy4R.qaqc (0.2.0) and their dependencies were automatically built on top of this base image. To complete the eddy4R–Docker processing, analysis, and modeling environment, the NEON data portal API Client nneo (0.1.0), the environmental data locator metScanR (1.0.0), as well as the REddyProc (1.0.0) high-level utilities for aggregated EC data were also included. In addition, the user can install any desired R packages to customize the environment.

Docker’s benefits to scientific software development are described in detail in Boettiger (2015). For NEON’s purposes, several Docker properties are particularly important:

- Docker images are portable and independent of the underlying operating system. This enables scientists to develop code on local computers or virtual machines without worrying about the deployment architecture.
- In terms of reproducibility, the DevOps principles are ingrained into the Docker build process, thus ensuring a fully traceable and documented Docker image.
- There is a streamlined interface between NEON Science and CI, where defined inputs, outputs, and instructions provide an ideal framework to isolate and package algorithmic services for operational deployment.
- For continuous development and integration, Docker provides a modular and extensible framework, permitting NEON’s data processing to remain up to date with the latest algorithmic developments. As shown by the nneo and REddyProc examples, it enables directly leveraging community-developed code. In this way, eddy4R–Docker is functionally extensible, while making it easy for the community to incorporate NEON-developed code into their own data processing.

2.4 Hierarchical Data Format version 5 (DevOps Configure)

The capability to process large datasets is reliant upon efficient input and output of data, data compressibility to reduce compute resource loads, and the ability to easily package and access metadata. The Hierarchical Data Format (HDF5) is a file format that can meet these needs and is a key tool aiding the DevOps Configure (computational resource allocation) stage. A NEON standard HDF5 file structure and metadata attributes allow users to explore larger datasets in an intuitive “directory-like” structure that is based upon the NEON data product naming convention (see Fig. 4). Group level 1 separates data by site, and site-level metadata are attributed at that level. Group level 2 separates data by data product level (DPL), and DPL metadata are attributed at that level, where DPL1 are calibrated descriptive statistics, DPL2 are temporally interpolated, DPL3 are spatially interpolated, and DPL4 are further-derived quantities. Group level 3 includes the individual data products – for instance, CO₂ concentration. Lastly, replicates in the horizontal and vertical are separated as individual data tables.

This provides a streamlined data-delivery mechanism for the eddy4R–Docker processing framework. For the tower datasets analyzed in this study, including sonic anemometer, infrared gas analyzer, and mass flow controller data, file sizes ranged from 1 GB for the uncompressed data in comma-delimited ASCII files to 0.1–0.2 GB in HDF5 format, depending on the amount of missing data. The HDF5 files can be written in a simple format where data are stored as single one-dimensional arrays to maximize compression and effi-

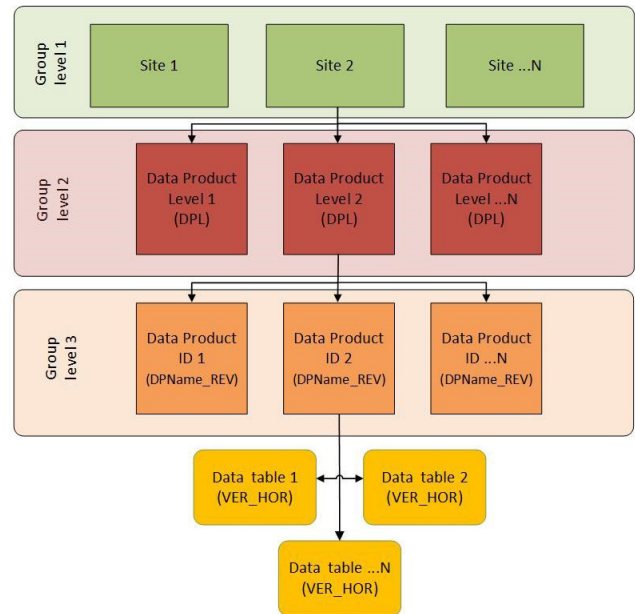


Figure 4. The NEON HDF5 file structure based on the NEON data product naming convention.

ciency, or the data can be stored as compound data tables that allow multiple data types to be written together in columnar format for ease of navigation when data size is not an issue.

Another important function of the HDF5 file format is the ability to attach metadata as attributes, further promoting reproducibility. The data in this study have the units and variable names as metadata attached to the data tables in the HDF5 file. Additional metadata are attributed to various hierarchical groups throughout the file, including environmental parameters, sensor metadata, and processing parameters. As a result, HDF5 and similar self-documenting hierarchical data formats are gaining traction in a community that has traditionally relied on ASCII text column or comma-delimited files, especially as tools for viewing, manipulating, and extracting data from HDF5 become more commonplace. The utility of HDF5 file format is demonstrated in the executable example workflow that accompanies this paper (see Sect. 2.6).

2.5 Modular compatibility with existing compute infrastructure (DevOps Configure and Monitor)

To perform a defined series of processing steps, a Docker image is called with a workflow file, resulting in a running instance called a Docker container (Fig. 5). Through this mechanism, an arbitrary number of Docker containers can be run simultaneously, performing identical or different services depending on the workflow file. This provides an ideal framework for scaled deployment using, e.g., high-throughput compute architectures or cloud-based services.

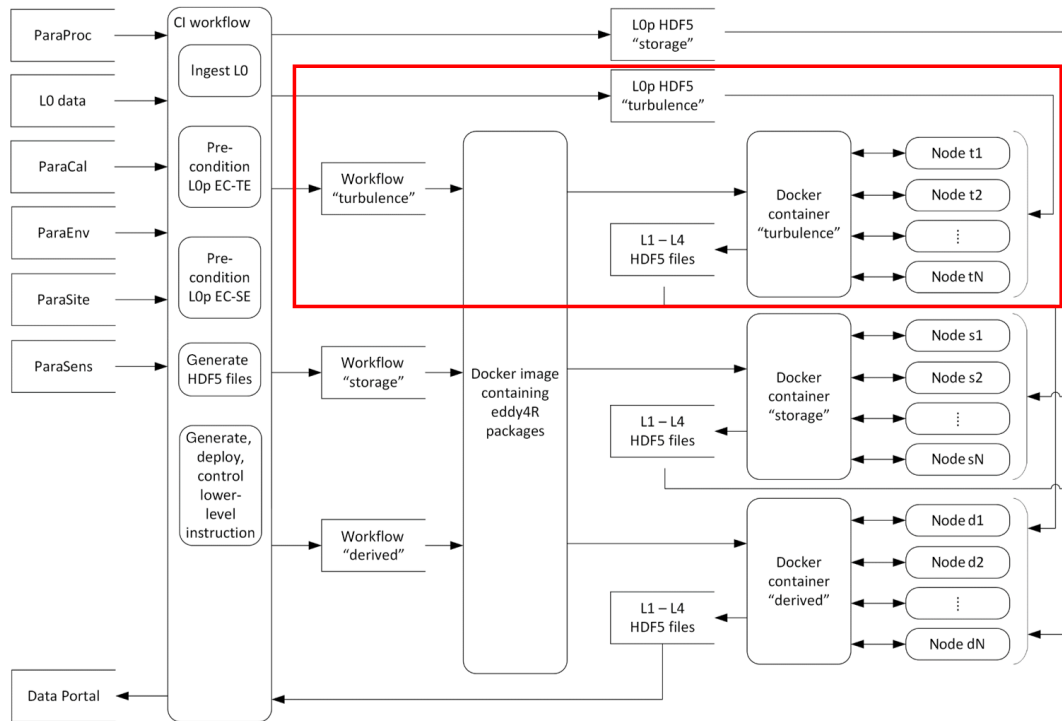


Figure 5. NEON’s eddy4R–Docker EC processing framework. The red box visualizes the scope of the present study, and individual components are described in the text.

Embodying the DevOps Configure stage, NEON’s eddy4R–Docker EC processing framework begins with ingesting information from various data sources on a site-by-site basis (Fig. 5, top left panels). This includes EC raw data (level 0, or L0 data) alongside contextual information on measurement site (ParaSite), environment (ParaEnv), sensor (ParaSens), calibration (ParaCal), as well as processing parameters (ParaProc). Next, the raw data are pre-conditioned and all information is hierarchically combined into a compact and easily transferable HDF5 file (Fig. 5, panel “CI workflow”). Each file contains the calibrated raw data (L0 prime, or L0p) and metadata for one site and 1 day, either for EC turbulent exchange or storage exchange. In this paper, we focus on demonstrating the turbulence data process and analysis in the red box of Fig. 5. Together with the “turbulence” workflow file, the HDF5 L0p data file is passed to the eddy4R–Docker image, where a running Docker container is spawned that scales the computation over a specified number of compute nodes (Fig. 5, top right panels). The resulting higher-level data products (level 1–level 4, or L1–L4) are collected from the compute nodes and, together with all contextual information, are combined into a daily L1–L4 HDF5 data file that is served on the data portal (Fig. 5, bottom left panel). In addition to the daily output files, monthly concatenated files are also available for download from the NEON data portal (https://w3id.org/smetzger/Metzger-et-al_2017_eddy4R-Docker/portal/0.2.0). This se-

quence is performed analogously for different combinations of workflows and data, and it is possible for the workflow instruction sets to interact with each other. For example, the “turbulence” and “storage” containers are processing in parallel, and starting the “derived” container once all intermediary results are available (Fig. 5, bottom right panel). It should be noted that the “turbulence”, “storage” and “combined” Docker containers (Fig. 5, right panels) are all spawned from the same eddy4R–Docker image (Fig. 5, center panel): each container includes the same underlying functionality (eddy4R packages), but serves a different purpose by being fed the “turbulence”, “storage” or “combined” workflow files.

This eddy4R–Docker EC processing framework modularly integrates into preexisting data-processing pipelines, such as NEON’s CI (Fig. 6): in NEON’s preexisting framework, the CI group encoded simple algorithms (e.g., temporal means) in Java, based on algorithm documentation provided by NEON Science staff. The key difference of the eddy4R–Docker EC processing framework is that instead of algorithm documentation, NEON Science staff now provide documented algorithms that perform a complex series of processing steps, which can be directly deployed by CI. Not only does this adoption of the NEON–DevOps workflow (Fig. 2) streamline end-to-end operational implementation and efficiency, it empowers the science community at

large by putting the key to the scientific algorithms into the hands of scientists.

To address the DevOps Monitor stage, the computational resource load and performance statistics of operating eddy4R–Docker can easily be monitored with standard profiling procedures within NEON’s CI or other compute infrastructures. eddy4R–Docker further utilizes the R logging package (0.7–103) to provide hierarchical logging, multiple handlers, and formattable log records. Finally, end-user experience is monitored via the issues feature in GitHub, where users can report code bugs, deployment problems, etc.

2.6 Installation and operation

One source of resistance to reproducible research is the initial burden of learning a new workflow. The eddy4R–Docker image aims to reduce the initial setup effort and learning requirements. This is achieved by providing a computational environment that contains all the necessary software dependencies, the RStudio graphical development environment (<https://www.rstudio.com/>), and a code base consisting of example workflows and easily accessible functions. Combined with a simple and thoroughly documented installation procedure, it provides a similar feel to working locally.

To work with the eddy4R–Docker image, one first needs to sign up at DockerHub (<https://hub.docker.com/>) and install the Docker host software following the Docker installation instructions (https://docs.docker.com/engine/getstarted/step_one/). Next, the download of the eddy4R–Docker image and subsequent creation of a container can be performed by two simple commands in an open shell (Linux/Mac) or the Docker Quickstart Terminal (Windows):

```
docker login
docker run -d -p 8787:8787 stefanmet/eddy4r:0.2.0.
```

The first command will prompt for the user’s DockerHub ID and password. The second command will download the latest eddy4R–Docker image and start a Docker container that utilizes port 8787 for establishing a graphical interface via web browser. The release version of the Docker image can be specified, or alternatively the specifier `latest` provides the most up-to-date development image. In addition, it is possible to download and run a specific digest using the `docker run stefanmet/eddy4r@sha256` command. If data are not directed from/to cloud hosting, a physical file system location on the host computer (`local/dir`) can be mounted to a file system location inside the Docker container (`docker/dir`). This is achieved with the Docker run option `-v local/dir:docker/dir`.

The interactive RStudio server session running inside the Docker container can then be accessed via a web browser at `http://host-ip-address:8787`, using the IP address of the Docker host machine. The IP address of the Docker host can be determined by typing `localhost` in a shell session (Linux/Mac) or by typing `docker-machine ip`

default in `cmd.exe` (Windows). Lastly, in the web browser the user can log into the RStudio session with username and password `rstudio` (see Fig. 7).

Figure 7 also shows the RStudio integrated development environment and interactive help for the eddy4R.base package in Fig. 7a and c, respectively. Additional information about the use of RStudio and eddy4R packages in Docker containers can be found on the rocker-org/rocker website (<https://github.com/rocker-org/rocker/wiki/Using-the-RStudio-image>) and the eddy4R Wiki pages.

To demonstrate the ease of “Docker-assisted” data analysis and provide a template for potential eddy4R–Docker users, an executable example workflow and data are included in the eddy4R–Docker image. Once the eddy4R container is started, the example workflow, input data (NEON dp0p HDF5 file), and output data (NEON dp01 HDF5 file) are available from the Docker internal directory `/home/eddy/`. The example workflow is located at `/home/eddy/flowExmp/flow.turb.tow.neon.exmp.dp01.R` and provides a selection of the processing steps that yield the EC dp01 data on the NEON data portal (https://w3id.org/smetzger/Metzger-et-al_2017_eddy4R-Docker/portal/0.2.0). The example workflow is fully documented to guide readers through the various processing steps and employs key functionalities of the eddy4R.base and eddy4R.qaqc packages. These include data and metadata imports from the input HDF5 file, data assignment to file-backed objects, processing of 1 and 30 min data statistics and data quality, and writing the output HDF5 file. In addition, outputs from the quality flag and quality metric model are visualized.

As described above, the eddy4R–Docker image can be used for code development (DevOps Create stage) through accessing a running eddy4R–Docker container via a web browser. Alternatively, the eddy4R–Docker image can be used from the command line to perform scaled batch processing (DevOps Configure and Monitor stages). Deployment from the command line consists of passing the R workflow file to the Docker image. This is achieved by using the `docker run` command with the additional argument `Rscript docker/dir/filename.R`, with `filename.R` being the desired workflow. Thus, the eddy4R–Docker image can be used to simultaneously deploy multiple Docker containers to process data for multiple days or sites to the capacity of the computational platform.

3 Test applications

In the following, we present three test applications of eddy4R–Docker to evaluate whether the NEON DevOps model can indeed produce collaborative, portable, reproducible, and extensible EC software. Code development, packaging, release, and operation followed the NEON DevOps model presented in this paper. Code modules have

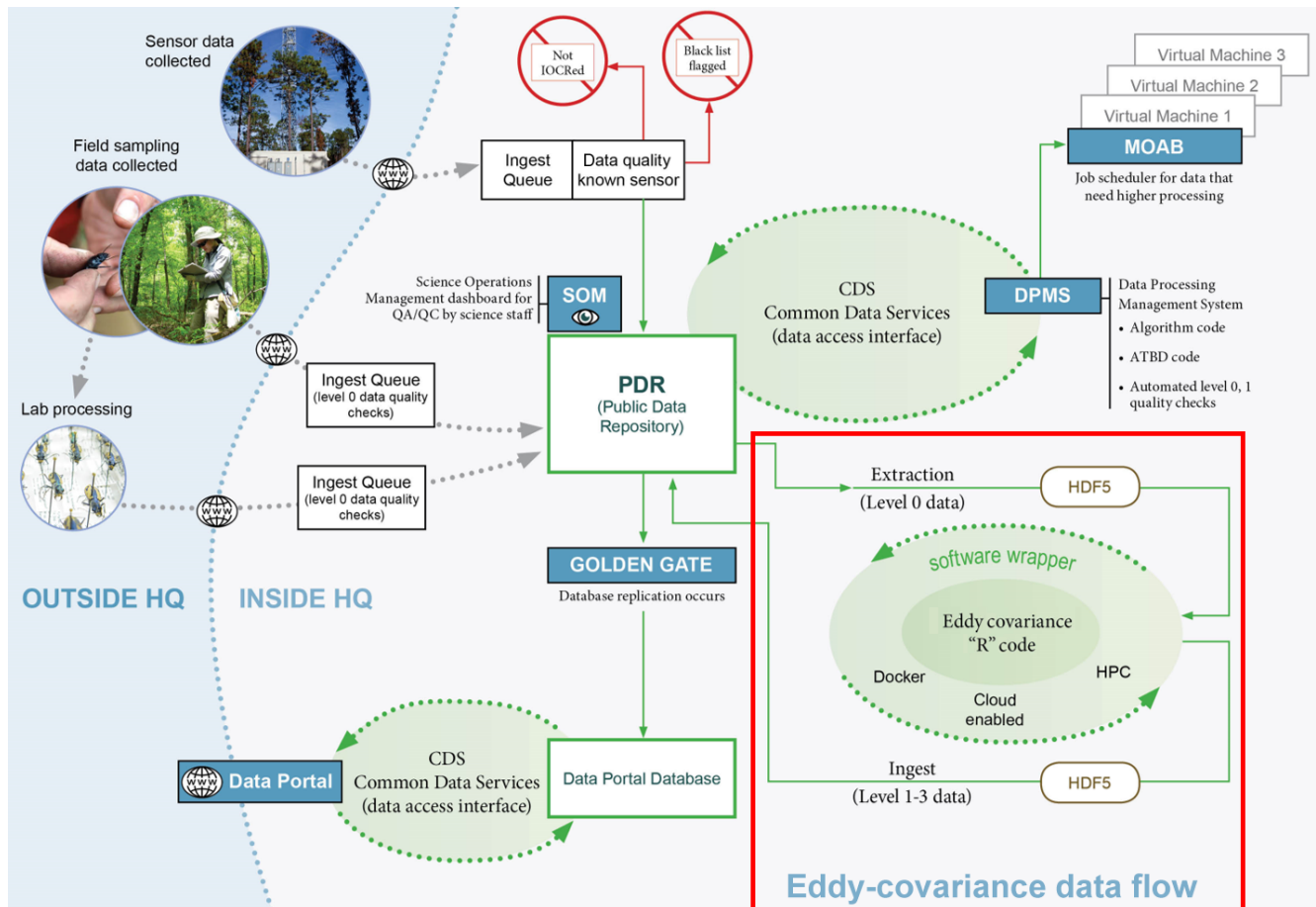


Figure 6. NEON's CI for streaming data processing. The red box visualizes the eddy4R–Docker EC processing framework within the overall CI.

been contributed by order 10 individuals, distributed across multiple institutions and utilizing various computer systems. Nevertheless, each contributor achieved identical results per validation scripts during the DevOps Verify and Package stages (Sect. 2.2), emphasizing the achieved portability and reproducibility. The majority of the calculations presented here were performed on 12 Intel Xeon X5550 2.67 GHz CPUs, with 32 GB memory and 10 Mbit interconnects and 10 Mbit access to 8 TB storage on an Oracle Zettabyte File System. The software specifications were CentOS 7 (3.10.0–327.el7.x86_64) with the Docker engine (1.11.0). In Sect. 3.1, results of processing 12 days of EC data from a fixed tower at a NEON field site are shown. Next, in Sect. 3.2, we present the processing of EC fluxes from a 1 h recording of a moving platform: airborne observations in a convectively mixed boundary layer. Lastly, a validation via software inter-comparison is provided in Sect. 3.3.

3.1 Tower eddy-covariance measurements

Here, we use tower EC measurements to test a typical implementation of the eddy4R processing framework. The

Smithsonian Environmental Research Center (SERC) in Edgewater, MD, USA, is located on the Rhode and West rivers, and hosts the NEON SERC tower ($38^{\circ}53'24.29''$ N, $76^{\circ}33'36.04''$ W; 30 m a.s.l.). The ecosystem at SERC is a closed-canopy hardwood deciduous forest dominated by tulip poplar, oak, and ash, with a mean canopy height of approximately 38 m (Fig. 8). EC turbulent flux sensors are mounted at the tower top at 62 m above ground or 24 m above the forest canopy.

An enclosed infrared gas analyzer (IRGA, LI-COR Biosciences, Lincoln, NE, USA; model: LI-7200, firmware version 7.3.1) was used to measure the turbulent fluctuations of H_2O and CO_2 . A mass flow controller (Alicat Scientific, Burlington, VT, USA; model: MCRW-20 SLPM-DS-NEON) was used to maintain a constant flow rate of 12 SLPM (standard liters per minute) through the IRGA cell. A sonic anemometer (Campbell Scientific, Logan, UT, USA; model: CSAT3, firmware version 3) was used to measure the three-dimensional turbulent wind components. Data from the IRGA and the sonic anemometer were synchronized using

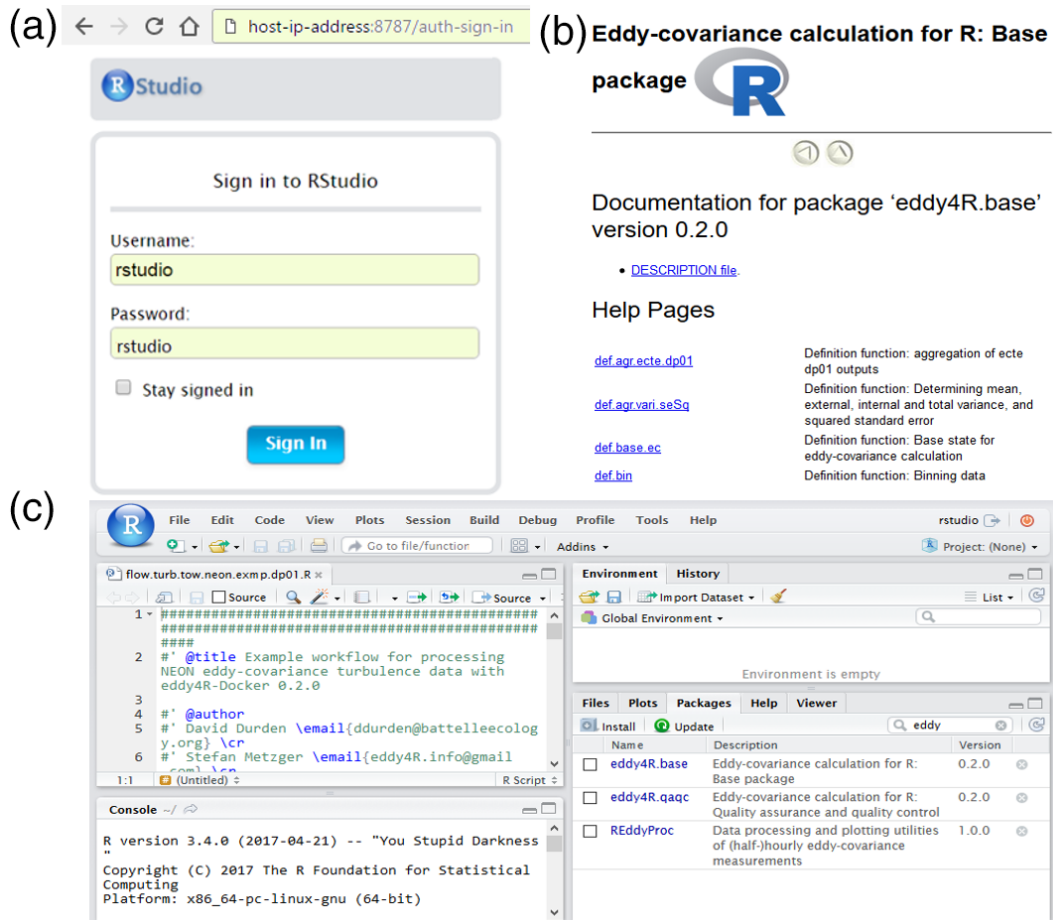


Figure 7. Docker-based RStudio server session via web browser. (a) Sign-in screen with highlighted areas showing information to input by the user. (b) Interactive help for the eddy4R.base package. (c) Integrated development environment with workflow template, R console, Git staging area, and eddy4R packages.

triggering and network timing protocol, and collected simultaneously at a 20 Hz sampling rate.

Here, data from 22 April to 3 May 2016 were used. The mean temperature during this time period was 15 °C, with a maximum temperature of 29 °C and a minimum of 8 °C. A total of 15 mm of precipitation was observed at the nearby Annapolis Naval Academy.

3.1.1 Algorithm settings and profiling

The eddy4R workflow file was configured to ingest on the order of 50 data streams at 20 Hz, including 3-D wind components, sonic temperature, and H₂O and CO₂ concentrations. The data were processed to half-hourly L1 data products and turbulent fluxes. The L1 data products are essentially state variables (wind, temperature, concentrations) with basic statistical products derived, i.e., mean, minimum, maximum, standard error of the mean, and variance. The algorithmic processing for the L4 flux calculations requires additional scientific and procedural complexity to test assumptions of

the EC theory. The resultant fluxes represent half-hourly vertical turbulent exchanges between the Earth's surface and the atmosphere corresponding to these state variables.

For the datasets analyzed in this study, the L0p input file sizes ranged from 0.1 to 0.2 GB in HDF5 format depending on the amount of missing data, with metadata attached as attributes. We used the simple data format for our HDF5 files, as opposed to compound data type; this resulted in reduced read in time from 60 to 3 s for 20 Hz IRGA data. Elementary testing indicates that in this framework a 6 min CPU time was required to process 1 day of 20 Hz L0 data, and a 1.2 min CPU time per 1 day of L0p data (100 000 000 observations). This difference arises mainly from application of plausibility tests per Taylor and Loescher (2013) in the transition from L0 to L0p. No reduction in efficiency was observed between direct software deployment and its Docker implementation. Once flux QA/QC and uncertainty budget are implemented, the computational expense will likely increase by a factor of 2–3. This suggests that eddy4R performs comparably to other flux processors. Memory usage is kept

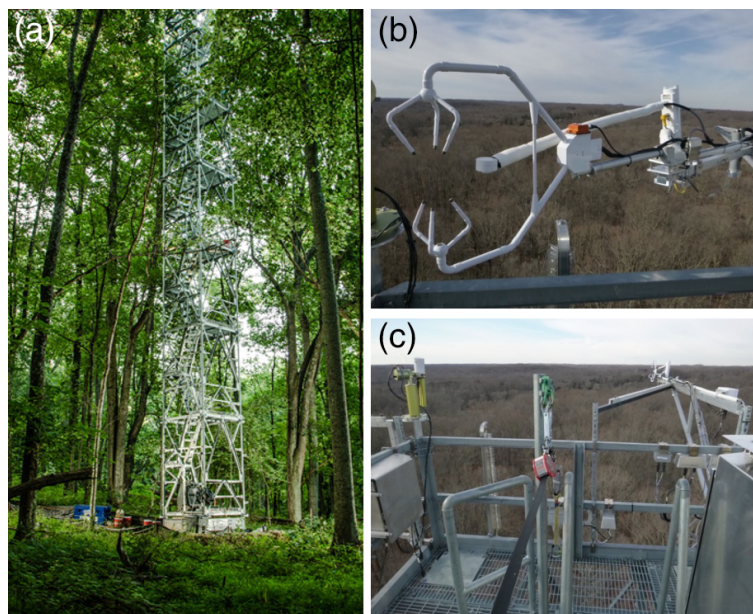


Figure 8. (a) Ecosystem at the NEON SERC tower (credit: Stephen Voss Photography; <http://www.stephenvoss.com/>). (b, c) EC instrumentation on top of the NEON SERC tower. (b) Campbell Scientific CSAT-3 three-dimensional sonic anemometer (front) and LI-COR Biosciences LI-7200 infrared gas analyzer (back) on the retracted tower-top boom. (c) Same instrumentation but with the tower-top boom extended at 230° from true north.

below 2 GB through the use of fast access file-backed objects, enabling more sophisticated scientific analyses through access to multiple days of data without overloading random access memory (RAM) resources. Additionally, the snowfall R package allows for logical parallelization frameworks to be implemented in the processing framework, even at low-level analysis steps.

3.1.2 Results and discussion

The time series ranging from 22 April to 3 May 2016 was processed to deliver both state (L1) and flux (L4) quantities; however, the initial eddy4R package release will only contain functions necessary to report state variables or L1 data products in the NEON data product description. During the processing of the proof-of-concept results, averaging periods with $> 10\%$ missing data (including bad sensor diagnostic flags) were removed, and dedicated flux QA/QC and uncertainty quantification were disabled.

Figure 9 shows the resultant time series of shear stress (friction velocity), sensible heat, latent heat, and CO_2 flux. The derived values fall into typical ranges for midlatitude hardwood forests in spring. As expected, fluxes follow the general trends in the scalar quantities. Good data coverage can be seen for the LI-7200 measurements even during the rainy period at the end of the analysis. A footprint analysis revealed that 90 % of the flux measurement signals were sourced within 800 m from the tower, and 80 % were within 500 m from the tower at our site. Data coverage was reduced

after day of year (DOY) 120 due to inclement weather conditions.

The spiky results preceding and following periods with $> 10\%$ invalid data highlight the need for enabling the full flux QA/QC and uncertainty budget to subset science-grade fluxes. This implementation of eddy4R in a Docker image, as it will interact with NEON CI, clearly demonstrates the applicability of the DevOps model for generating EC L1–L4 data products.

3.2 Aircraft eddy-covariance measurements

Here, we use aircraft EC measurements to test more advanced scientific capabilities of the eddy4R processing framework. Airborne turbulent flux observations were performed along more than 3100 km of low-level (i.e., 50 m a.g.l. – above ground level) flights across the North Slope Borough, Alaska, USA, in July 2012, using the research aircraft Polar 5. The example data used in this paper were recorded during a SSW–NNE flight line near the village of Atkasuk, Alaska, above tundra dominated by sedges and emerging herbaceous wetland vegetation. Large, often oriented lakes and the meandering Meade River characterize the surrounding landscape.

The aircraft was equipped with a 3 m nose boom holding a five-hole probe for wind measurements, an open wire Pt100 in an unheated Rosemount housing for air temperature measurements, and an HMT-330 (Vaisala, Helsinki, Finland) in a Rosemount housing for relative humidity. Sample air was

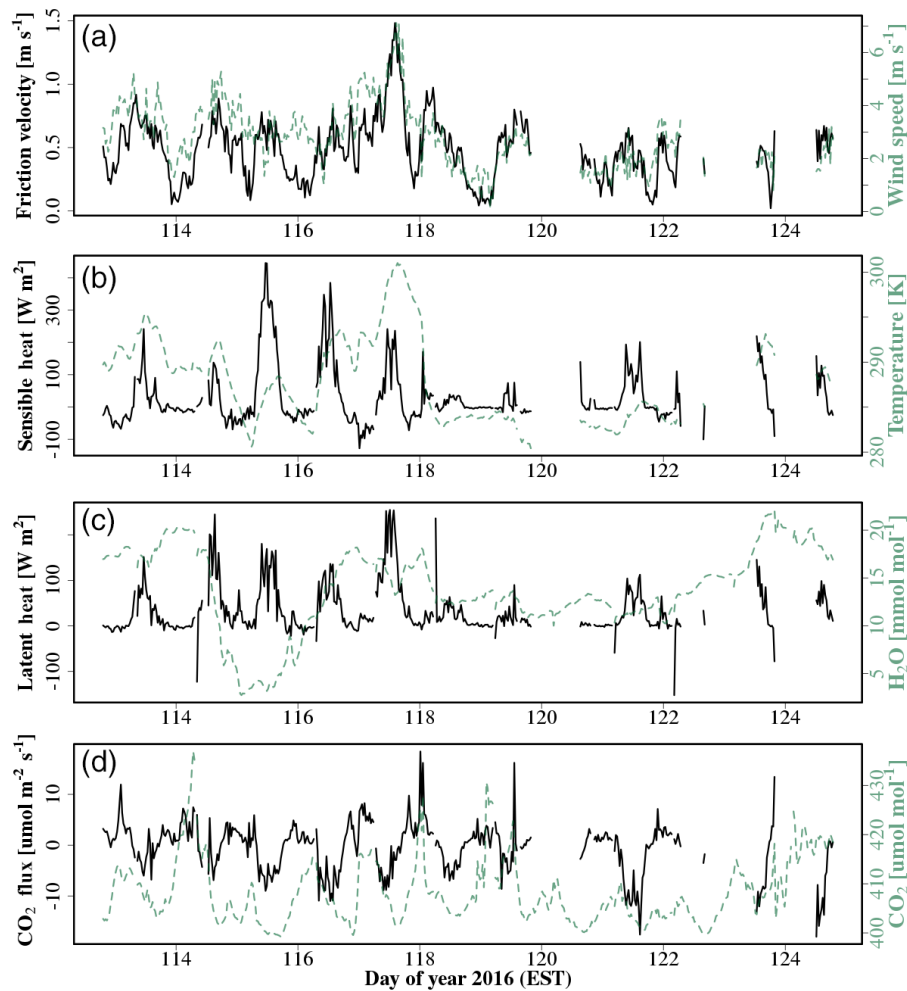


Figure 9. Time series of turbulent fluxes derived from EC measurements atop the NEON SERC tower. Panels (a)–(d) indicate vertical turbulent exchange of shear (friction velocity) and wind speed, sensible heat and temperature, latent heat and H₂O dry mole fraction, and CO₂ flux and CO₂ dry mole fraction.

drawn from an inlet above the cabin at about 9.7 L s^{-1} , analyzed in an RMT-200 cavity ring-down trace gas sensor (Los Gatos Research Inc., Mountain View, CA, USA) and recorded at 20 Hz. Aircraft position, velocity, and attitude were provided by several global positioning systems (NovAtel Inc., Calgary, Alberta, Canada) and an inertial navigation system (Laseref V, Honeywell International Inc., Morristown, NJ, USA). Height above ground was determined by a radar altimeter (KRA 405B/Honeywell International Inc., Morristown, NJ, USA) and a laser altimeter (LD90/RIEGL Laser Measurements Systems GmbH, Horn, Austria). The input data used in this study included the prederived 3-D wind vector from five-hole probe and aircraft position, velocity, and attitude. After spike removal, the sampling frequency of the original data was reduced from 100 to 20 Hz resolution using block averaging. These steps were performed prior to import into eddy4R but could equally well be performed therein.

3.2.1 Algorithm settings and profiling

Here, aircraft-measured vertical wind speed and CH₄ dry mole fraction were analyzed to determine CH₄ emissions by means of a time–frequency-resolved version of the EC method (Metzger et al., 2013). For this purpose, a combination of settings were chosen in the eddy4R workflow file that differ from Sect. 3.1: initially, the small ($< 1 \text{ MB}$) EC raw data file consisting of 17 variables and 12 800 data points (or 42 km flight data) was read in ASCII Gzip format – standard R capabilities for data ingest can be used to read data in various formats, frequencies, and units. Aircraft-measured vertical wind speed and CH₄ dry mole fraction were then correlated using a wavelet transform (Metzger et al., 2013). This process includes ranging and de-spiking of unphysical raw data values (Mauder et al., 2013; Metzger et al., 2012), fast dry mole fraction derivation (e.g., Burba et al., 2012) and spectroscopic correction (Tuzson et al., 2010) of CH₄

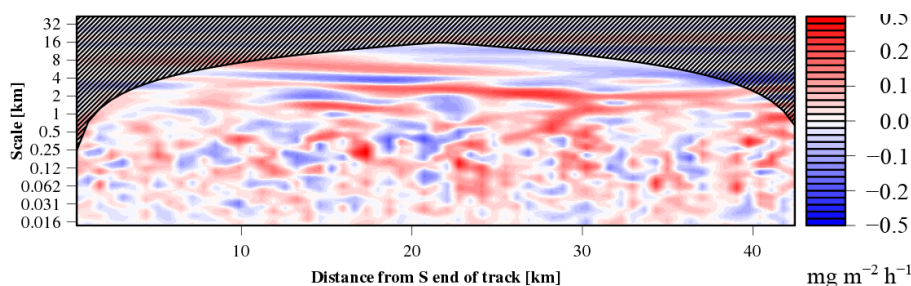


Figure 10. Wavelet cross scalogram of the CH₄ flux equivalent to a time (x -axis) frequency (y -axis) resolved version of EC. For each combination of aircraft position and eddy size, blue and red areas indicate transport toward and away from the surface, respectively.

trace gas observations, and high-frequency spectral correction (Ammann et al., 2006) by means of applying a sigmoidal transfer function (Eugster and Senn, 1995) directly in wavelet space. This permits estimating turbulent fluxes with improved spatial discretization and determining ~ 100 biophysically relevant surface properties in the flux footprint. The analysis took 56 min with 8-fold parallelization and consumed < 3 GB RAM thanks to the use of fast access file-backed objects.

3.2.2 Results and discussion

The resulting wavelet cross scalogram (Fig. 10) is integrated in frequency over transport scales up to 20 km and along the flight path over a 1000 m moving window with 100 m step size, similar to the resolution of the land surface data. The result is an in situ observed space series of the CH₄ surface–atmosphere exchange at 100 m spatial resolution. Analogously, turbulence statistics characterizing shear stress and buoyancy are determined for characterizing the atmospheric transport between the emitting land surface and the aircraft position.

Corresponding systematic and random statistical errors are calculated following Lenschow and Stankov (1986) and Lenschow et al. (1994), and the flux detection limit is calculated after Billesbach (2011).

The relationship between the aircraft-observed CH₄ surface–atmosphere exchange and land surface properties is established through an atmospheric transport operator, the so-called flux footprint function (e.g., Schmid, 1994). Here, we use a computationally efficient one-dimensional parameterization of a Lagrangian particle model for the along-wind footprint extent (Kljun et al., 2002, 2004), combined with an analytical approach to determine cross-wind surface contributions to each 100 m aircraft measurement, depending on aircraft position (Fig. 11; Metzger et al., 2012).

For each 100 m observation of the CH₄ surface–atmosphere exchange, an individual footprint weight matrix derived from the footprint parameterization is convolved with the land surface drivers. The results are space series of land surface contributions accompanying the CH₄ measured surface–atmosphere exchange (Fig. 12).

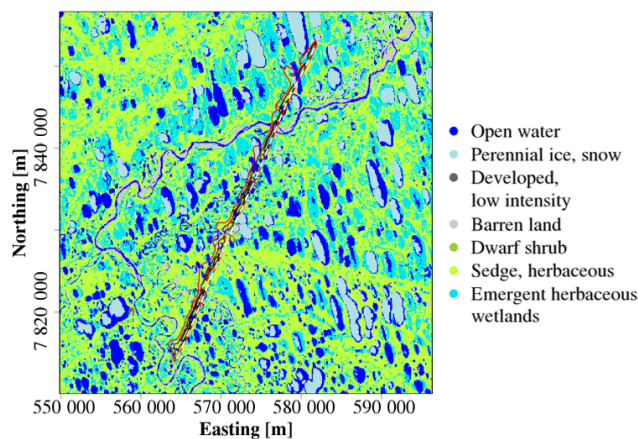


Figure 11. The composite flux footprint along the flight line (30, 60, and 90 % contour lines) superimposed over the National Land Cover Database. The white dashed line represents the aircraft flight track.

The successful application of eddy4R–Docker to both basic tower and advanced aircraft EC data analyses highlights how the DevOps model promotes modular extensibility.

3.3 Validation and verification

eddy4R includes a verification script which automatically processes subsets of the tower and aircraft data introduced in Sect. 3.1 and 3.2, and verifies the results against a reference, e.g., generated with a different software.

Here, we demonstrate such approach at the Park Falls, Wisconsin, very tall tower AmeriFlux site (US-PFa). The 447 m tall television tower (45.946° N, 90.272° W) has been instrumented for EC measurements in 1996, and is part of the AmeriFlux network. Flux measurements at 30, 122, and 396 m sample a mixed landscape of forests and wetlands (Desai et al., 2015). The surrounding forest canopy has approximately 70 % deciduous and 30 % coniferous trees, and a mean canopy height of 20 m. The site has an interior continental climate. Instrumentation at each level consists of fast response wind speed and temperature from a sonic anemometer (Applied Technologies, Inc., Seattle, WA, USA;

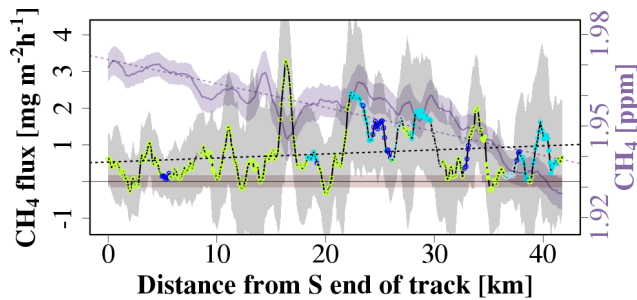


Figure 12. Space series of 399 observations of CH₄ concentration (purple line) and flux (black line), each 100 m, averaged over 1000 m windows. The random sampling errors are indicated by the shaded areas enveloping each line, and the flux detection limit is shown as a salmon-colored envelope around the abscissa. Circles indicate the dominating land cover in the footprint of each observation (Fig. 11) with full circles corresponding to “pure” fluxes (> 80 % surface contribution).

ATI type K). The 10 Hz dry mole fractions of CO₂ and H₂O at the 122 m level used here were measured by a closed-path infrared gas analyzer (LI-COR, Inc., Lincoln, NE, USA; LI-6262) located on the tower.

A dataset from 27 July to 19 August 2011 was used in the intercomparison between eddy4R and the reference software EddyPro (LI-COR, Inc., Lincoln, NE, USA; version 6.2.0). EddyPro was released in April 2011 and is widely used in the EC community.

3.3.1 Algorithm settings

Several preprocessing steps were applied, and the resulting data and settings were used in both eddy4R and EddyPro: (i) the raw data were precleaned in eddy4R using the Brock (1986) de-spiking algorithm with a filter width of nine data points for all variables. (ii) EddyPro was used to calculate the planar-fit rotation parameters (Wilczak et al., 2001) over the entire dataset (offset of -0.06 m s^{-1} , pitch of -5.27° , roll of -1.81°). (iii) Time lags for dry mole fractions of CO₂ (0.8 s behind vertical wind) and H₂O (0.1 s behind vertical wind) were calculated in eddy4R using maximum correlation (median lag time over entire dataset).

Because CO₂ and H₂O fluxes were calculated from dry mole fractions, the Webb et al. (1980) density correction was not necessary and therefore was not applied (Burba et al., 2012). Frequency response correction was not considered in this validation and therefore was not applied. Means, variances, and fluxes were calculated on the basis of 1 h block averages. Based on Schotanus et al. (1983), sensible heat flux was calculated from point-by-point conversion of sonic temperature in eddy4R, with the half-hourly statistical correction in EddyPro.

3.3.2 Results and discussion

eddy4R and EddyPro produce nearly identical results (Fig. 13), and the gain error is within 0.04 % for most outputs. Sensible heat flux values produced by eddy4R have slightly larger magnitude compared to EddyPro (by 0.49 %). This is likely a result of the different methods applied when converting sonic temperature to air temperature. This intercomparison confirms that applying the DevOps model to scientific EC software achieved results comparable to commercial-grade software. A detailed end-to-end intercomparison considering additional processing steps and EC software is planned for a separate paper accompanying NEON’s release of flux data products.

4 Summary and conclusions

Adopting a DevOps philosophy has facilitated the creation of a universal processing environment for producing NEON’s EC data products. Portable, reproducible, and extensible software is reliably and efficiently created by incorporating the DevOps workflow steps of Plan, Create, Verify, Package, Release, Configure, and Monitor into a NEON-specific DevOps model based on the tools R, Git, HDF5, and Docker. Git distributed version control facilitates simultaneous internal–external collaboration on scientific algorithms, the outcome being a modular family of open-source R packages. The use of Hierarchical Data Format allows for efficient, self-describing data input and output. Docker images package the entire processing environment for robust, scalable, and portable deployment. The capability of this framework was demonstrated with cross-validated tower and aircraft fluxes.

The results presented here are from a file-based implementation of the eddy4R–Docker workflow, with EC instrument data accessed directly, e.g., from the NEON site and manually processed into the HDF5 ingest format (Sect. 2.5). The subsequent focus is the operational implementation of the eddy4R–Docker workflow for reporting means and variances. This includes (i) automated ingest of streaming raw data into the NEON database; (ii) processing of raw data into the standard, defined inputs required by the eddy4R–Docker in HDF5 format; and (iii) developing the software and hardware infrastructure to pass data and instructions back and forth to the eddy4R–Docker workflow and control program execution in a distributed computing framework.

The remaining scientific algorithms are being integrated into eddy4R–Docker for producing turbulent exchange data products. These algorithms include lag correction, planar-fit and spectral correction, flux QA/QC, and uncertainty budget estimation. Finally, eddy4R–Docker is being expanded to include “storage” and “derived” workflows (Fig. 6) for generating reproducible net ecosystem exchange data products in 2018. Lessons learned here will profit the community at large, e.g., through enabling streaming processing directly at

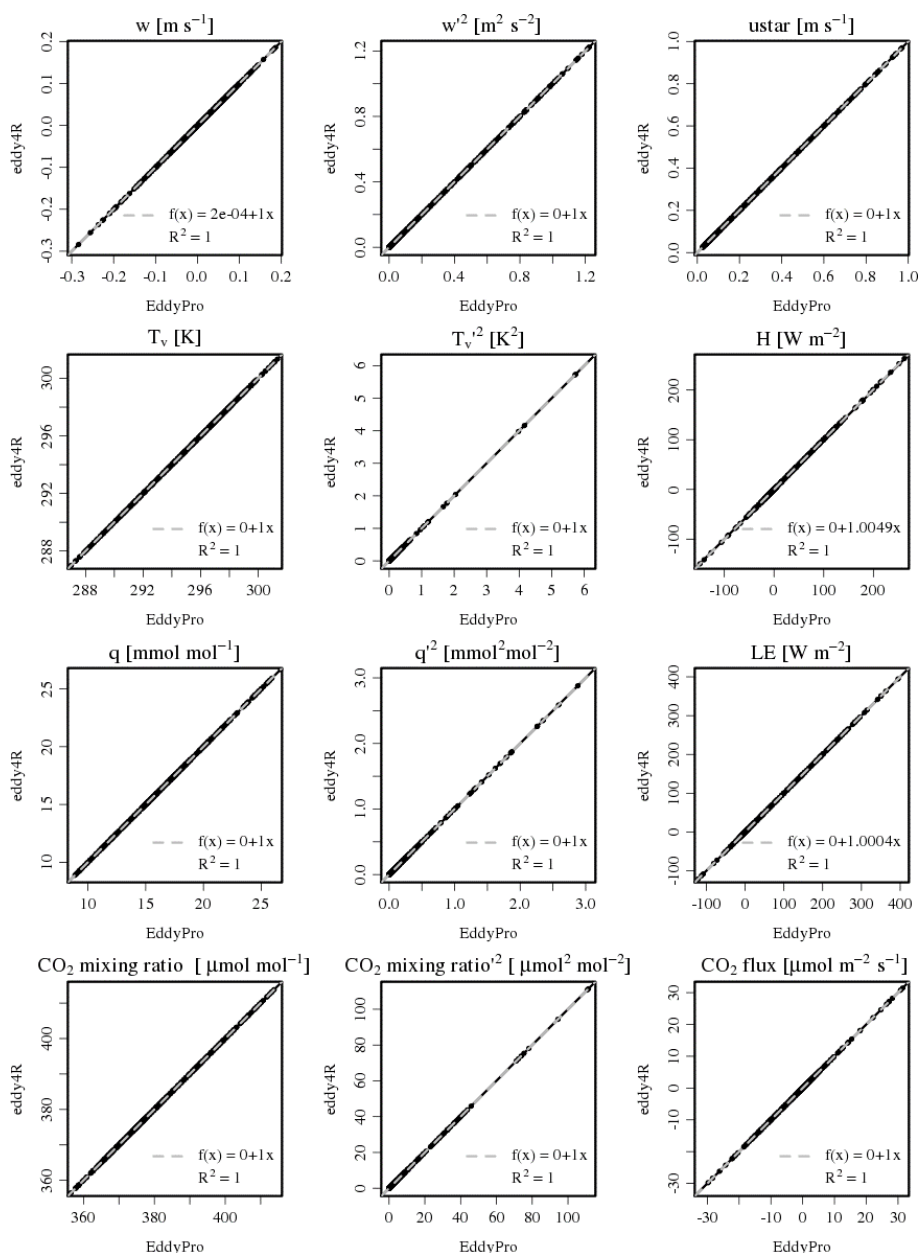


Figure 13. Scatterplot of means (vertical wind speed, w ; sonic temperature, T_v ; H_2O dry mole fraction, q ; and CO_2 dry mole fraction), variances and fluxes (friction velocity, u_{star} ; sensible heat flux, H ; latent heat, LE ; CO_2 flux). Data are generated from July to August 2011 US-PFa data in EddyPro and eddy4R. Each point represents a 1 h averaging period. Black lines are 1 : 1 lines, and dashed lines are robust regressions (Salibian-Barrera and Yohai, 2006).

an EC site or over cellular modems with the same eddy4R–Docker open-source software as used for sophisticated analyses (Sect. 3.2). Already, the executable example workflow and data included in eddy4R–Docker image invite the reader to realize their own end-to-end data analysis and apply it to their data (Sect. 2.6).

While our sole focus in developing and implementing this model has been to generate EC data products within the unique capabilities and constraints of NEON, it has become

clear that the NEON DevOps model enables the implementation of a suite of complex processing algorithms, such as temporal gap filling of sensor time series data or modeling re-aeration rates. There exist many potential synergies between NEON, other tower networks, and the user community for producing high-level EC data products. We hope this framework can serve as a model for implementing community-sourced, distributed-development scientific code while com-

batting the deficiencies of current computational frameworks that limit accessibility, reproducibility, and extensibility.

Code and data availability. The source code packages eddy4R.base (0.2.0) and eddy4R.qaqc (0.2.0) used in this study are archived at https://w3id.org/smetzger/Metzger-et-al_2017_eddy4R-Docker/code/0.2.0, under the GNU Affero general public license (GNU AGPLv3). Similarly, the corresponding eddy4R-Docker image (0.2.0), including an executable example workflow and data, is available at https://w3id.org/smetzger/Metzger-et-al_2017_eddy4R-Docker/docker/0.2.0. In addition, a data supplement is provided at https://w3id.org/smetzger/Metzger-et-al_2017_eddy4R-Docker/data/0.2.0, including an extended abstract and all NEON SERC raw data used in this study, accompanied by variable documentation. Lastly, NEON EC data products generated with eddy4R-Docker are available at https://w3id.org/smetzger/Metzger-et-al_2017_eddy4R-Docker/portal/0.2.0.

Competing interests. Jiahong Li works for LI-COR Biosciences, which produces instruments relevant for this type of measurement.

Acknowledgements. Many colleagues at Battelle Ecology supported this study. In particular, Santiago Bonarrigo provided prepared high-frequency data from the SERC site, and Andrew Fox (now at the National Center for Atmospheric Research), Mike SanClements, and David Hulslander commented on an earlier version of the paper. Henry Loescher and Leslie Goldman designed Fig. 6, and Andrea Thorpe (now at the Washington Natural Heritage Program), Thomas Gulbransen, and Michael Kuhlman helped shepherding this study and its publication through required administrative procedures. Special thanks goes to Timothy Brown at the National Oceanic and Atmospheric Administration for numerous discussions and invaluable advice on scientific computing. The National Ecological Observatory Network is a project sponsored by the National Science Foundation and managed under cooperative agreement by Battelle Ecology, Inc. This material is based upon work supported by the National Science Foundation under the grant DBI-0752017. Any opinions, findings, and conclusions or recommendations expressed in this material are those of the author(s) and do not necessarily reflect the views of the National Science Foundation. Ankur Desai acknowledges support from NSF DBI-1457897 and DOE Office of Science Ameriflux Network Management Project core site support to the ChEAS cluster. Torsten Sachs and Andrei Serafimovich are supported by the Helmholtz Association of German Research Centres through a Helmholtz Young Investigators Group grant to Torsten Sachs (grant VH-NG-821).

Edited by: Chiel van Heerwaarden

Reviewed by: three anonymous referees

References

- Ammann, C., Brunner, A., Spirig, C., and Neftel, A.: Technical note: Water vapour concentration and flux measurements with PTR-MS, *Atmos. Chem. Phys.*, 6, 4643–4651, <https://doi.org/10.5194/acp-6-4643-2006>, 2006.
- Aubinet, M., Vesala, T., and Papale, D. (Eds.): *Eddy covariance: A practical guide to measurement and data analysis*, Springer, Dordrecht, Heidelberg, London, New York, 438 pp., 2012.
- Baldocchi, D., Falge, E., Gu, L., Olson, R., Hollinger, D., Running, S., Anthoni, P., Bernhofer, C., Davis, K., Evans, R., Fuentes, J., Goldstein, A., Katul, G., Law, B., Lee, X., Malhi, Y., Meyers, T., Munger, W., Oechel, W. U. K., Pilegaard, K., Schmid, H., Valentini, R., Verma, S., Vesala, T., Wilson, K., and Wofsy, S.: FLUXNET: A new tool to study the temporal and spatial variability of ecosystem-scale carbon dioxide, water vapor, and energy flux densities, *B. Am. Meteorol. Soc.*, 82, 2415–2434, [https://doi.org/10.1175/1520-0477\(2001\)082<2415:FANTTS>2.3.CO;2](https://doi.org/10.1175/1520-0477(2001)082<2415:FANTTS>2.3.CO;2), 2001.
- Billesbach, D. P.: Estimating uncertainties in individual eddy covariance flux measurements: A comparison of methods and a proposed new method, *Agr. Forest. Meteorol.*, 151, 394–405, <https://doi.org/10.1016/j.agrformet.2010.12.001>, 2011.
- Boettger, C.: An introduction to Docker for reproducible research, with examples from the R environment, *Operat. Syst. Rev.*, 49, 71–79, <https://doi.org/10.1145/2723872.2723882>, 2015.
- Brock, F. V.: A nonlinear filter to remove impulse noise from meteorological data, *J. Atmos. Ocean. Tech.*, 3, 51–58, [https://doi.org/10.1175/1520-0426\(1986\)003<0051:anftri>2.0.co;2](https://doi.org/10.1175/1520-0426(1986)003<0051:anftri>2.0.co;2), 1986.
- Burba, G., Schmidt, A., Scott, R. L., Nakai, T., Kathilankal, J., Fratini, G., Hanson, C., Law, B., McDermitt, D. K., Eckles, R., Furtaw, M., and Velgersdyk, M.: Calculating CO₂ and H₂O eddy covariance fluxes from an enclosed gas analyzer using an instantaneous mixing ratio, *Global Change Biol.*, 18, 385–399, <https://doi.org/10.1111/j.1365-2486.2011.02536.x>, 2012.
- Chen, L.: Continuous delivery: Huge benefits, but challenges too, *IEEE Softw.*, 32, 50–54, <https://doi.org/10.1109/ms.2015.27>, 2015.
- Clark, D., Culich, A., Hamlin, B., and Lovett, R.: BCE: Berkeley's common scientific compute environment for research and education, in: *Proceedings of the 13th Python in Science Conference (SCIPY 2014)*, Austin, USA, 2014.
- Clement, R. J., Burba, G. G., Grelle, A., Anderson, D. J., and Moncrieff, J. B.: Improved trace gas flux estimation through IRGA sampling optimization, *Agr. Forest. Meteorol.*, 149, 623–638, <https://doi.org/10.1016/j.agrformet.2008.10.008>, 2009.
- Collberg, C., Proebsting, T., Moraila, G., Shankaran, A., Shi, Z., and Warren, A. M.: *Measuring reproducibility in computer systems research*, University of Arizona, Department of Computer Science, Tucson, USA, 37 pp., 2014.
- De Roo, F., Abdul Huq, S. U., Metzger, S., Desai, A. R., Xu, K., and Mauder, M.: On the benefit of driving large-eddy simulation with spatially resolved surface fluxes derived from environmental response functions, in: *TERENO International Conference*, 29 September–2 October 2014, Bonn, Germany, 2014.
- Desai, A. R., Xu, K., Tian, H., Weishampel, P., Thom, J., Baumann, D., Andrews, A. E., Cook, B. D., King, J. Y., and Kolka, R.: Landscape-level terrestrial methane flux observed

- from a very tall tower, *Agr. Forest Meteorol.*, 201, 61–75, <https://doi.org/10.1016/j.agrformet.2014.10.017>, 2015.
- Erich, F., Amrit, C., and Daneva, M.: A mapping study on cooperation between information system development and operations, in: 15th International Conference on Product-Focused Software Process Improvement, PROFES 2014, Helsinki, Finland, 2014.
- Eugster, W. and Senn, W.: A cospectral correction model for measurement of turbulent NO₂ flux, *Bound.-Lay. Meteorol.*, 74, 321–340, <https://doi.org/10.1007/bf00712375>, 1995.
- Foken, T.: *Micrometeorology*, 2nd Edn., Springer, Berlin, Heidelberg, 362 pp., 2017.
- Foken, T. and Wichura, B.: Tools for quality assessment of surface-based flux measurements, *Agr. Forest Meteorol.*, 78, 83–105, [https://doi.org/10.1016/0168-1923\(95\)02248-1](https://doi.org/10.1016/0168-1923(95)02248-1), 1996.
- Fratini, G. and Mauder, M.: Towards a consistent eddy-covariance processing: An intercomparison of EddyPro and TK3, *Atmos. Meas. Tech.*, 7, 2273–2281, <https://doi.org/10.5194/amt-7-2273-2014>, 2014.
- Kljun, N., Rotach, M. W., and Schmid, H. P.: A three-dimensional backward lagrangian footprint model for a wide range of boundary-layer stratifications, *Bound.-Lay. Meteorol.*, 103, 205–226, <https://doi.org/10.1023/A:1014556300021>, 2002.
- Kljun, N., Calanca, P., Rotach, M. W., and Schmid, H. P.: A simple parameterisation for flux footprint predictions, *Bound.-Lay. Meteorol.*, 112, 503–523, <https://doi.org/10.1023/B:BOUN.0000030653.71031.96>, 2004.
- Kljun, N., Calanca, P., Rotach, M. W., and Schmid, H. P.: A simple two-dimensional parameterisation for Flux Footprint Prediction (FFP), *Geosci. Model Dev.*, 8, 3695–3713, <https://doi.org/10.5194/gmd-8-3695-2015>, 2015.
- Kohnert, K., Serafimovich, A., Metzger, S., Hartman, J., and Sachs, T.: Geogenic sources strongly contribute to the Mackenzie River Delta's methane emissions derived from airborne flux data, in: 48th AGU annual Fall Meeting, 14–18 December 2015, San Francisco, USA, 2015.
- Kormann, R. and Meixner, F. X.: An analytical footprint model for non-neutral stratification, *Bound.-Lay. Meteorol.*, 99, 207–224, <https://doi.org/10.1023/A:1018991015119>, 2001.
- Law, B.: AmeriFlux network aids global synthesis, *Eos Trans. Am. Geophys. Un.*, 88, 286, <https://doi.org/10.1029/2007eo280003>, 2007.
- Lee, J., Vaughan, A., Lewis, A., Shaw, M., Purvis, R., Carlslaw, D., Hewitt, C., Misztal, P., Metzger, S., Beevers, S., Goldstein, A., Karl, T., and Davison, D.: Spatially resolved emissions of NO_x and VOCs and comparison to inventories, in: 48th AGU annual Fall Meeting, 14–18 December 2015, San Francisco, USA, 2015.
- Lenschow, D. H. and Stankov, B. B.: Length scales in the convective boundary layer, *J. Atmos. Sci.*, 43, 1198–1209, [https://doi.org/10.1175/1520-0469\(1986\)043<1198:LSITCB>2.0.CO;2](https://doi.org/10.1175/1520-0469(1986)043<1198:LSITCB>2.0.CO;2), 1986.
- Lenschow, D. H., Mann, J., and Kristensen, L.: How long is long enough when measuring fluxes and other turbulence statistics?, *J. Atmos. Ocean. Tech.*, 11, 661–673, [https://doi.org/10.1175/1520-0426\(1994\)011<0661:HLILEW>2.0.CO;2](https://doi.org/10.1175/1520-0426(1994)011<0661:HLILEW>2.0.CO;2), 1994.
- Loukides, M.: What is DevOps? Infrastructure as Code, O'Reilly Media, Ebook, Safari Books Online, 15 pp., 2012.
- Mammarella, I., Peltola, O., Nordbo, A., Järvi, L., and Rannik, Ü.: Quantifying the uncertainty of eddy covariance fluxes due to the use of different software packages and combinations of processing steps in two contrasting ecosystems, *Atmos. Meas. Tech.*, 9, 4915–4933, <https://doi.org/10.5194/amt-9-4915-2016>, 2016.
- Mauder, M., and Foken, T.: Eddy-covariance software TK3 [Data set], Documentation and instruction manual of the eddy-covariance software package TK3 (update), University of Bayreuth, Bayreuth, Germany, <https://doi.org/10.5281/zenodo.20349>, 2015.
- Mauder, M., Cuntz, M., Drüe, C., Graf, A., Rebmann, C., Schmid, H. P., Schmidt, M., and Steinbrecher, R.: A strategy for quality and uncertainty assessment of long-term eddy-covariance measurements, *Agr. Forest Meteorol.*, 169, 122–135, <https://doi.org/10.1016/j.agrformet.2012.09.006>, 2013.
- Metzger, S., Junkermann, W., Mauder, M., Beyrich, F., Butterbach-Bahl, K., Schmid, H. P., and Foken, T.: Eddy-covariance flux measurements with a weight-shift microlight aircraft, *Atmos. Meas. Tech.*, 5, 1699–1717, <https://doi.org/10.5194/amt-5-1699-2012>, 2012.
- Metzger, S., Junkermann, W., Mauder, M., Butterbach-Bahl, K., Trancón y Widemann, B., Neidl, F., Schäfer, K., Wieneke, S., Zheng, X. H., Schmid, H. P., and Foken, T.: Spatially explicit regionalization of airborne flux measurements using environmental response functions, *Biogeosciences*, 10, 2193–2217, <https://doi.org/10.5194/bg-10-2193-2013>, 2013.
- Metzger, S., Burba, G., Burns, S. P., Blanken, P. D., Li, J., Luo, H., and Zulueta, R. C.: Optimization of an enclosed gas analyzer sampling system for measuring eddy covariance fluxes of H₂O and CO₂, *Atmos. Meas. Tech.*, 9, 1341–1359, <https://doi.org/10.5194/amt-9-1341-2016>, 2016.
- Nordbo, A. and Katul, G.: A wavelet-based correction method for eddy-covariance high-frequency losses in scalar concentration measurements, *Bound.-Lay. Meteorol.*, 146, 81–102, <https://doi.org/10.1007/s10546-012-9759-9>, 2012.
- Paarsch, H. J. and Golyaev, K.: A gentle introduction to effective computing in quantitative research: What every research assistant should know, MIT Press, Cambridge, USA, 776 pp., 2016.
- Papale, D., Reichstein, M., Aubinet, M., Canfora, E., Bernhofer, C., Kutsch, W., Longdoz, B., Rambal, S., Valentini, R., Vesala, T., and Yakir, D.: Towards a standardized processing of Net Ecosystem Exchange measured with eddy covariance technique: algorithms and uncertainty estimation, *Biogeosciences*, 3, 571–583, <https://doi.org/10.5194/bg-3-571-2006>, 2006.
- Ram, K.: Git can facilitate greater reproducibility and increased transparency in science, *Source Code Biol. Med.*, 8, 1–8, <https://doi.org/10.1186/1751-0473-8-7>, 2013.
- Raupach, M. R., Rayner, P. J., Barrett, D. J., DeFries, R. S., Heimann, M., Ojima, D. S., Quegan, S., and Schimmlus, C. C.: Model-data synthesis in terrestrial carbon observation: Methods, data requirements and data uncertainty specifications, *Global Change Biol.*, 11, 378–397, <https://doi.org/10.1111/j.1365-2486.2005.00917.x>, 2005.
- R Core Team: R: A language and environment for statistical computing, R Foundation for Statistical Computing, Vienna, Austria, 2016.
- Running, S. W., Baldocchi, D. D., Turner, D. P., Gower, S. T., Bakwin, P. S., and Hibbard, K. A.: A global terrestrial monitoring network integrating tower fluxes, flask sampling, ecosystem modeling and EOS satellite data, *Remote Sens. Environ.*,

- 70, 108–127, [https://doi.org/10.1016/S0034-4257\(99\)00061-9](https://doi.org/10.1016/S0034-4257(99)00061-9), 1999.
- Sachs, T., Serafimovich, A., Metzger, S., Kohnert, K., and Hartmann, J.: Low permafrost methane emissions from arctic airborne flux measurements, in: 47th AGU annual Fall Meeting, 15–19 December 2014, San Francisco, USA, 2014.
- Salibian-Barrera, M. and Yohai, V. J.: A fast algorithm for S-regression estimates, *J. Comput. Graph. Stat.*, 15, 414–427, 2006.
- Salmon, O., Caulton, D., Shepson, P., Brian, S., Metzger, S., and Musinsky, J.: Attributing airborne measurements of forest CO₂ exchange to finer spatial scales, in: 5th NACP Principal Investigators Meeting, 26–29 January 2015, Washington, D.C., USA, 2015.
- Schimel, D., Hargrove, W., Hoffman, F., and MacMahon, J.: NEON: a hierarchically designed national ecological network, *Front. Ecol. Environ.*, 5, 59, [https://doi.org/10.1890/1540-9295\(2007\)5\[59:nahdne\]2.0.co;2](https://doi.org/10.1890/1540-9295(2007)5[59:nahdne]2.0.co;2), 2007.
- Schmid, H. P.: Source areas for scalars and scalar fluxes, *Bound.-Lay. Meteorol.*, 67, 293–318, <https://doi.org/10.1007/bf00713146>, 1994.
- Schotanus, P., Nieuwstadt, F. T. M., and Bruin, H. A. R.: Temperature measurement with a sonic anemometer and its application to heat and moisture fluxes, *Bound.-Lay. Meteorol.*, 26, 81–93, <https://doi.org/10.1007/BF00164332>, 1983.
- Serafimovich, A., Metzger, S., Kohnert, K., Hartmann, J., and Sachs, T.: The airborne measurements of methane fluxes (AIRMETH) arctic campaign, in: 46th AGU annual Fall Meeting, 9–13 December 2013, San Francisco, USA, 2013.
- Smith, D. E., Metzger, S., and Taylor, J. R.: A transparent and transferable framework for tracking quality information in large datasets, *PLoS One*, 9, e112249, <https://doi.org/10.1371/journal.pone.0112249>, 2014.
- Starkenburg, D., Metzger, S., Fochesatto, G. J., Alfieri, J. G., Gens, R., Prakash, A., and Cristóbal, J.: Assessment of de-spiking methods for turbulence data in micrometeorology, *J. Atmos. Ocean. Tech.*, 33, 2001–2013, <https://doi.org/10.1175/jtech-d-15-0154.1>, 2016.
- Stull, R. B.: *An Introduction to Boundary Layer Meteorology*, Kluwer Academic Publishers, Dordrecht, the Netherlands, 670 pp., 1988.
- Sulkava, M., Luysaert, S., Zaehle, S., and Papale, D.: Assessing and improving the representativeness of monitoring networks: The European flux tower network example, *J. Geophys. Res.*, 116, G00J04, <https://doi.org/10.1029/2010jg001562>, 2011.
- Taylor, J. R. and Loeschner, H. L.: Automated quality control methods for sensor data: A novel observatory approach, *Biogeosciences*, 10, 4957–4971, <https://doi.org/10.5194/bg-10-4957-2013>, 2013.
- Turner, D. P., Ollinger, S. V., and Kimball, J. S.: Integrating remote sensing and ecosystem process models for landscape- to regional-scale analysis of the carbon cycle, *BioScience*, 54, 573–584, [https://doi.org/10.1641/0006-3568\(2004\)054\[0573:irsapj\]2.0.co;2](https://doi.org/10.1641/0006-3568(2004)054[0573:irsapj]2.0.co;2), 2004.
- Tuzson, B., Hiller, R. V., Zeyer, K., Eugster, W., Neftel, A., Ammann, C., and Emmenegger, L.: Field intercomparison of two optical analyzers for CH₄ eddy covariance flux measurements, *Atmos. Meas. Tech.*, 3, 1519–1531, <https://doi.org/10.5194/amt-3-1519-2010>, 2010.
- Vaughan, A. R., Lee, J., Misztal, P., Metzger, S., Shaw, M. D., Lewis, A. C., Purvis, R., Carslaw, D., Goldstein, A., Hewitt, C. N., Davison, B., Beevers, S. D., and Karl, T.: Spatially resolved flux measurements of NO_x from London suggest significantly higher emissions than predicted by inventories, *Faraday Discuss.*, 189, 455–472, <https://doi.org/10.1039/c5fd00170f>, 2016.
- Vickers, D. and Mahrt, L.: Quality control and flux sampling problems for tower and aircraft data, *J. Atmos. Ocean. Tech.*, 14, 512–526, [https://doi.org/10.1175/1520-0426\(1997\)014<0512:QCAFSP>2.0.CO;2](https://doi.org/10.1175/1520-0426(1997)014<0512:QCAFSP>2.0.CO;2), 1997.
- Webb, E. K., Pearman, G. I., and Leuning, R.: Correction of flux measurements for density effects due to heat and water vapour transfer, *Q. J. Roy. Meteorol. Soc.*, 106, 85–100, <https://doi.org/10.1002/qj.49710644707>, 1980.
- Wilczak, J. M., Oncley, S. P., and Stage, S. A.: Sonic anemometer tilt correction algorithms, *Bound.-Lay. Meteorol.*, 99, 127–150, <https://doi.org/10.1023/A:1018966204465>, 2001.
- Wurster, L. F., Colville, R. J., and Duggan, J.: *Market Trends: DevOps – not a market, but a tool-centric philosophy that supports a continuous delivery value chain*, Gartner, Inc., Stamford, USA, 14 pp., 2015.
- Xu, K., Metzger, S., and Desai, A. R.: Upscaling tower-observed turbulent exchange at fine spatio-temporal resolution using environmental response functions, *Agr. Forest Meteorol.*, 232, 10–22, <https://doi.org/10.1016/j.agrformet.2016.07.019>, 2017.