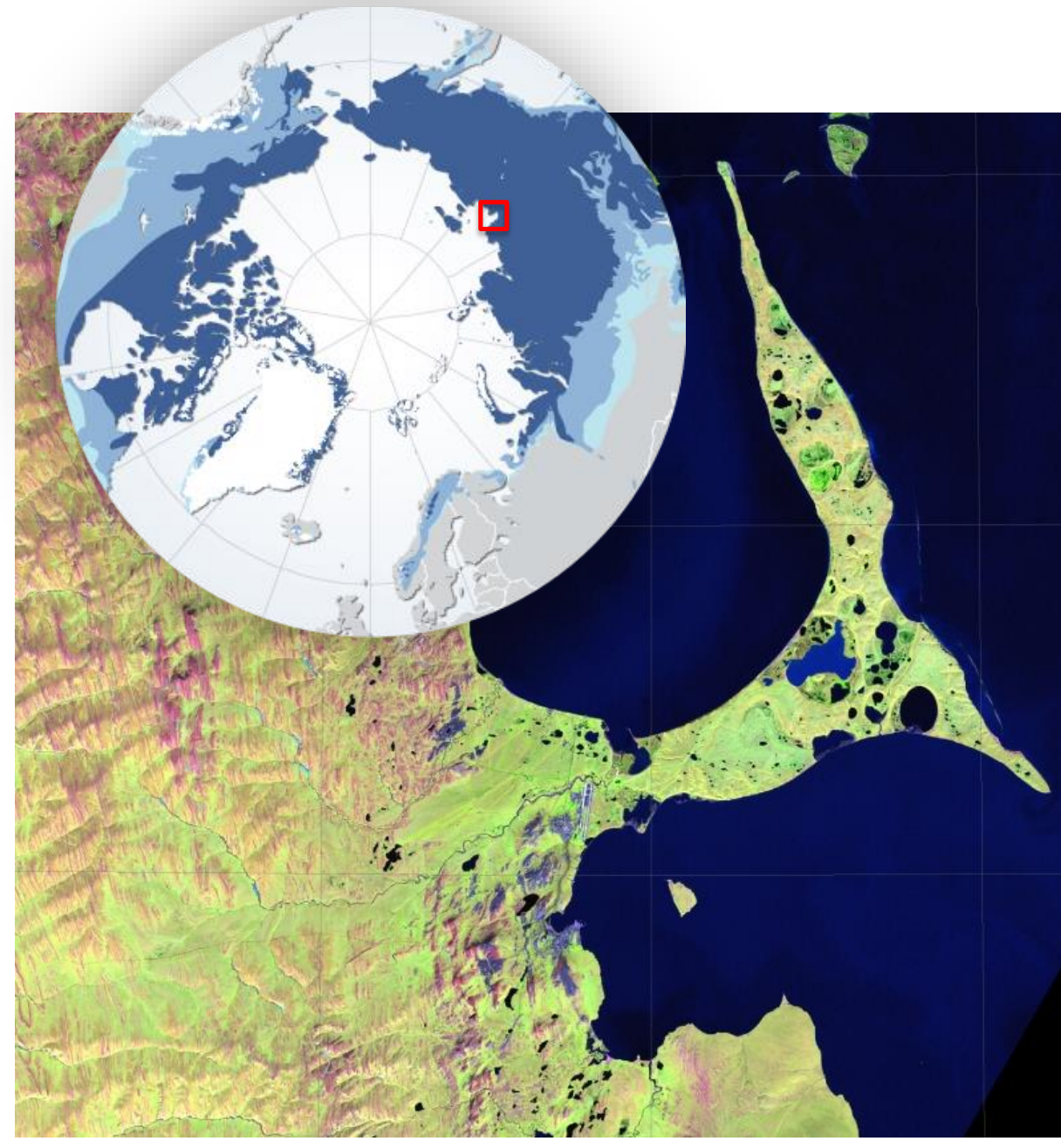


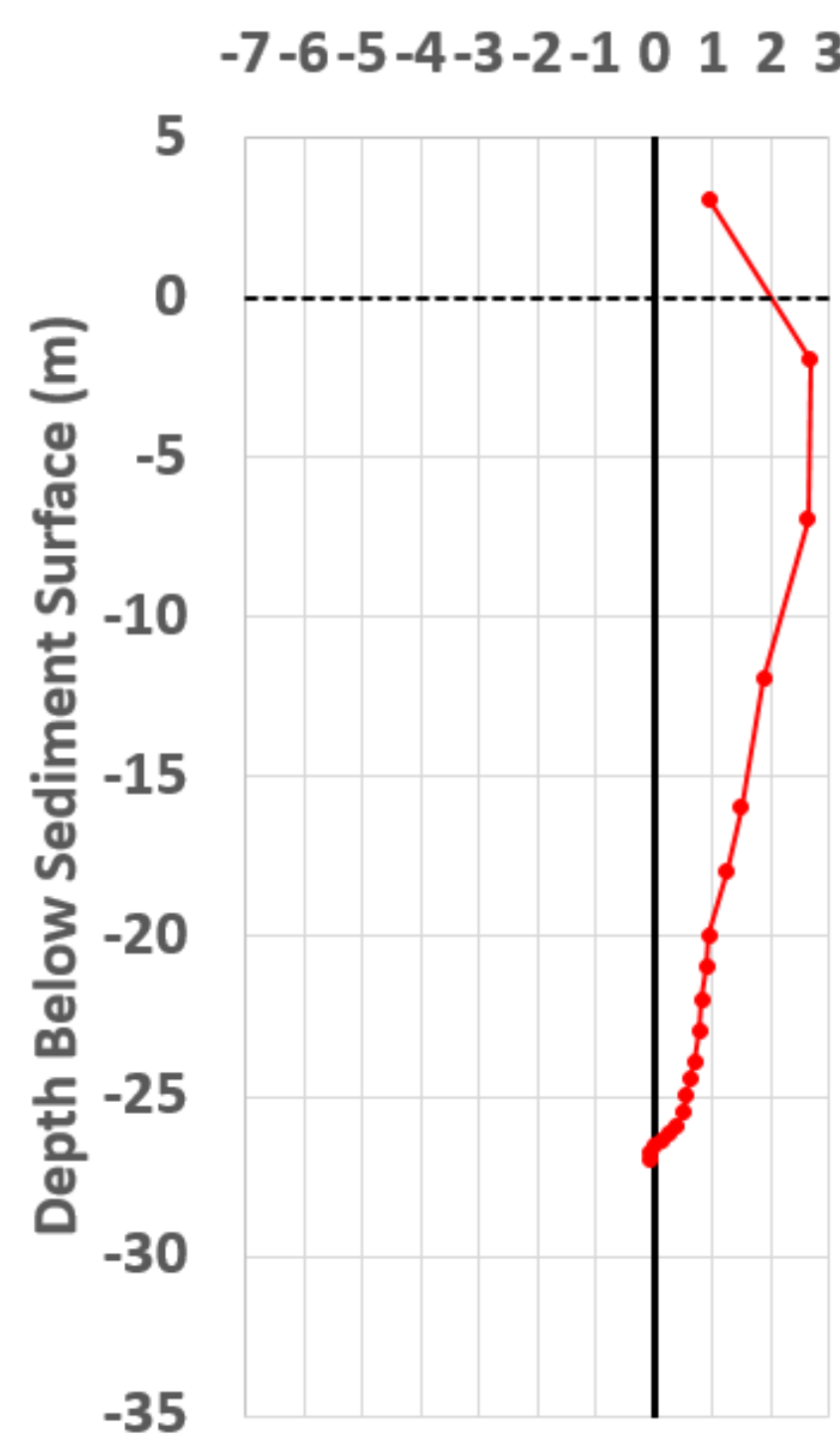
Geophysical surveys of sub-aquatic permafrost: talik dynamics and the influence of saltwater

Scientific Hypotheses

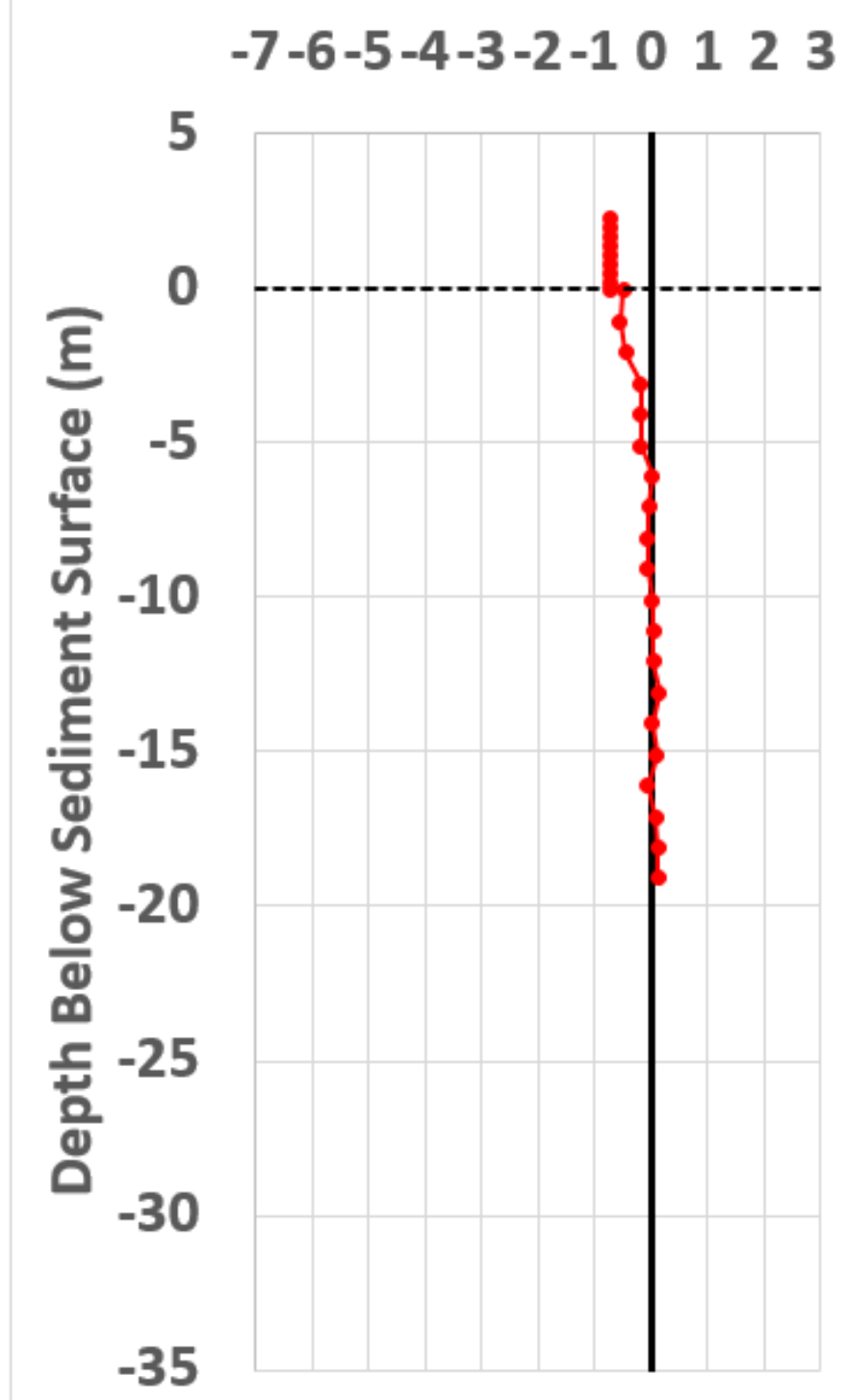
- 1) After a freshwater lake transforms into a saltwater lake, the underlying talik refreezes below a salty zone in shallow bathymetric areas.
- 2) After a freshwater lake transforms into a saltwater lake, the underlying talik is subject to deep seasonal freezing and potentially very slow permafrost formation in the lake centre where no grounded ice occurs.



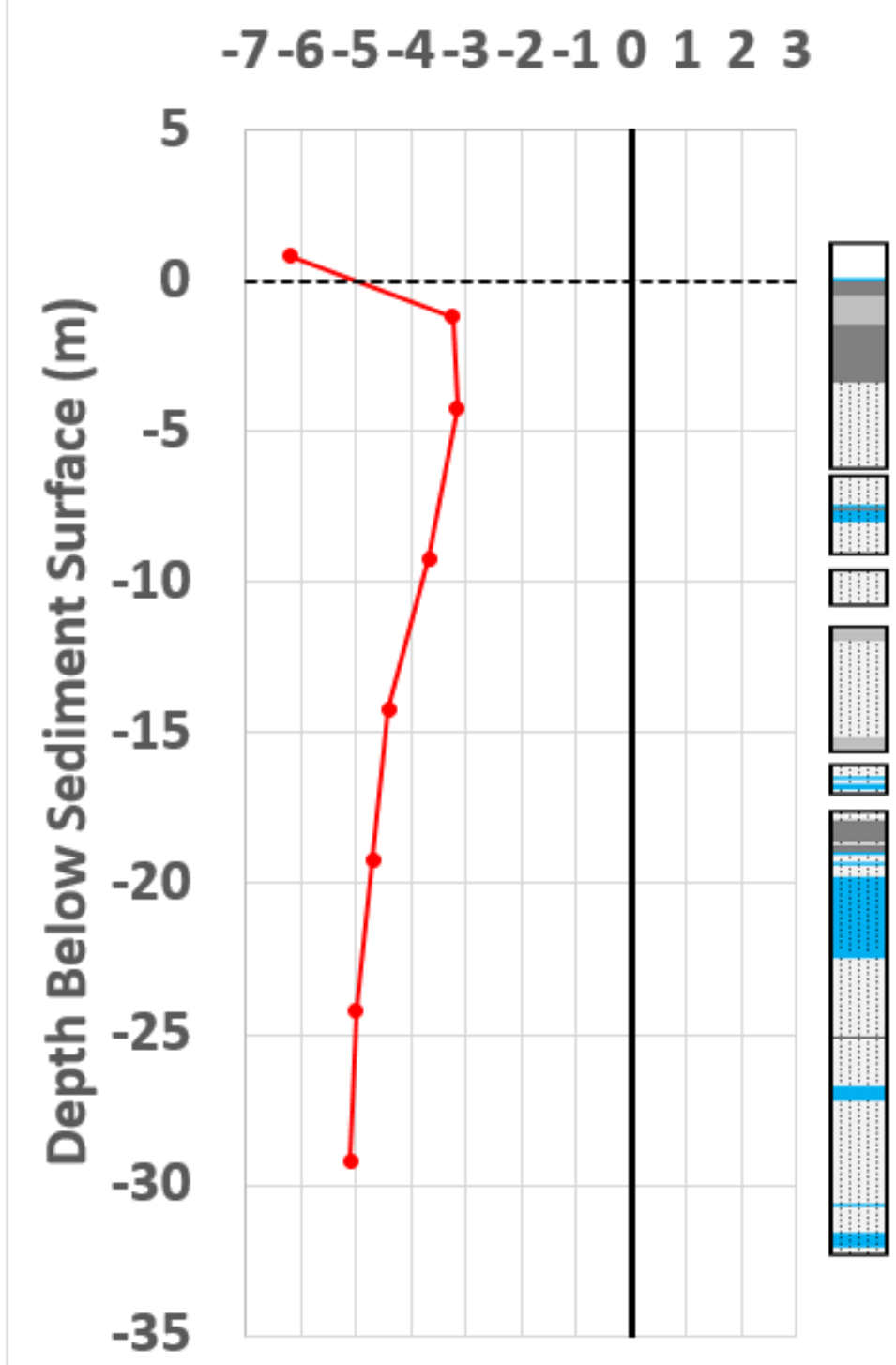
Goltsovoe Lake Temperature (°C)



Polar Fox Lake Temperature (°C)



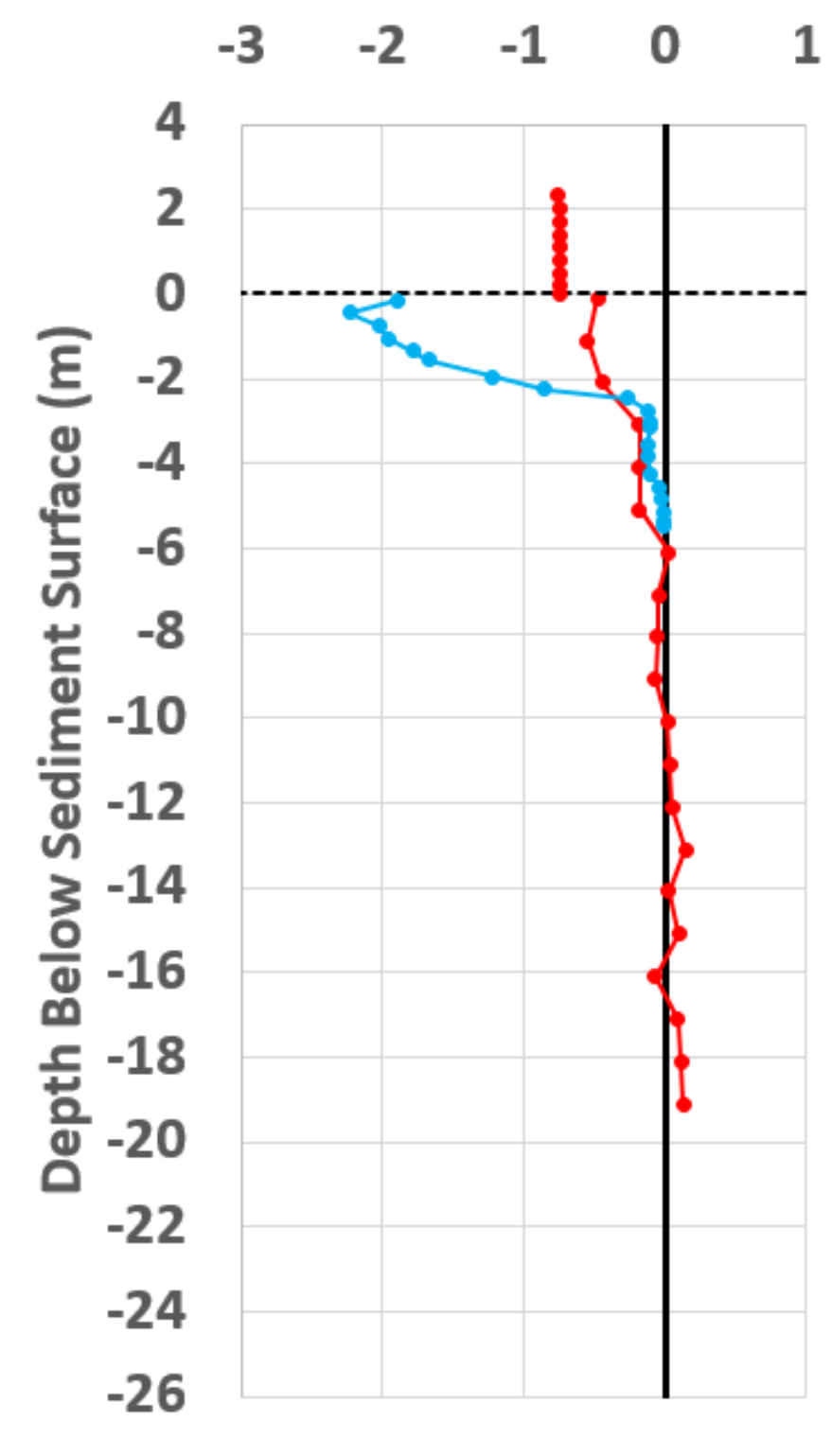
Uomullyakh Lagoon Temperature (°C)



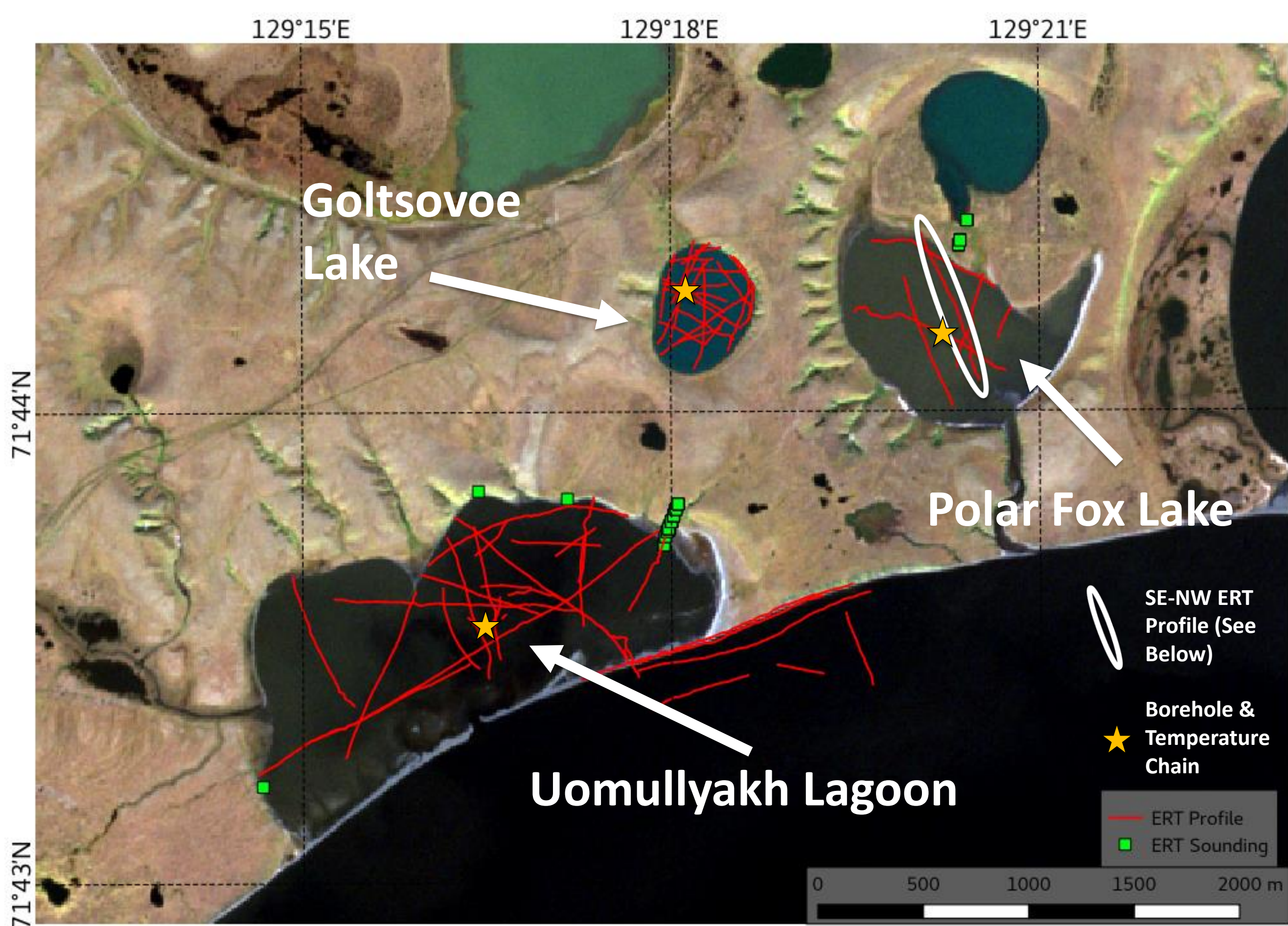
----- SEDIMENT BED
— 0 DEGREES CELCIUS
— TEMPERATURE
— FREEZING POINT

Freezing point derived from electrical conductivity of porewater.

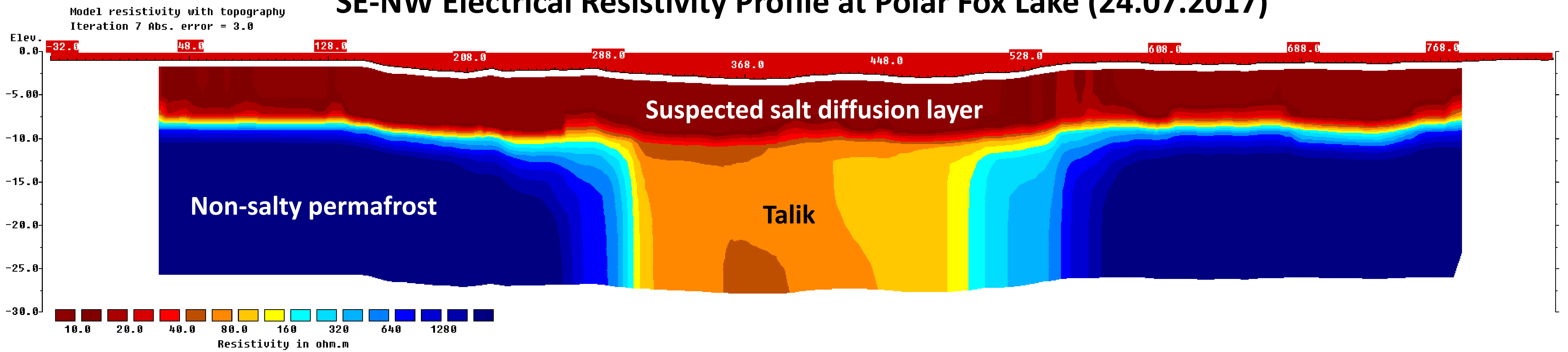
Note that borehole soil descriptions are preliminary and subject to change upon sample return and laboratory work.



- Lake/Lagoon Ice
- Water
- Clay
- Silt
- Sand
- Frozen Silt
- Frozen Sand

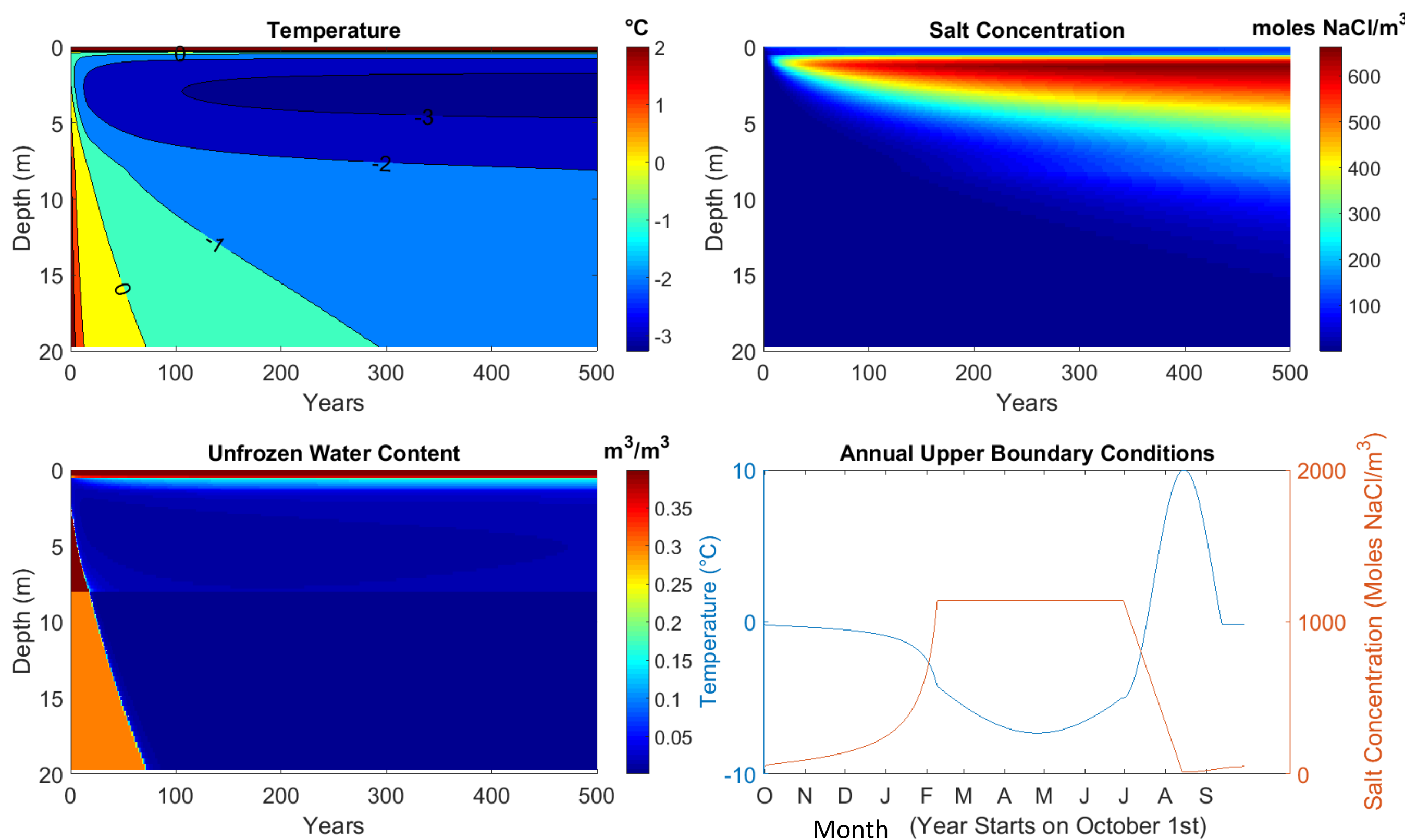


SE-NW Electrical Resistivity Profile at Polar Fox Lake (24.07.2017)

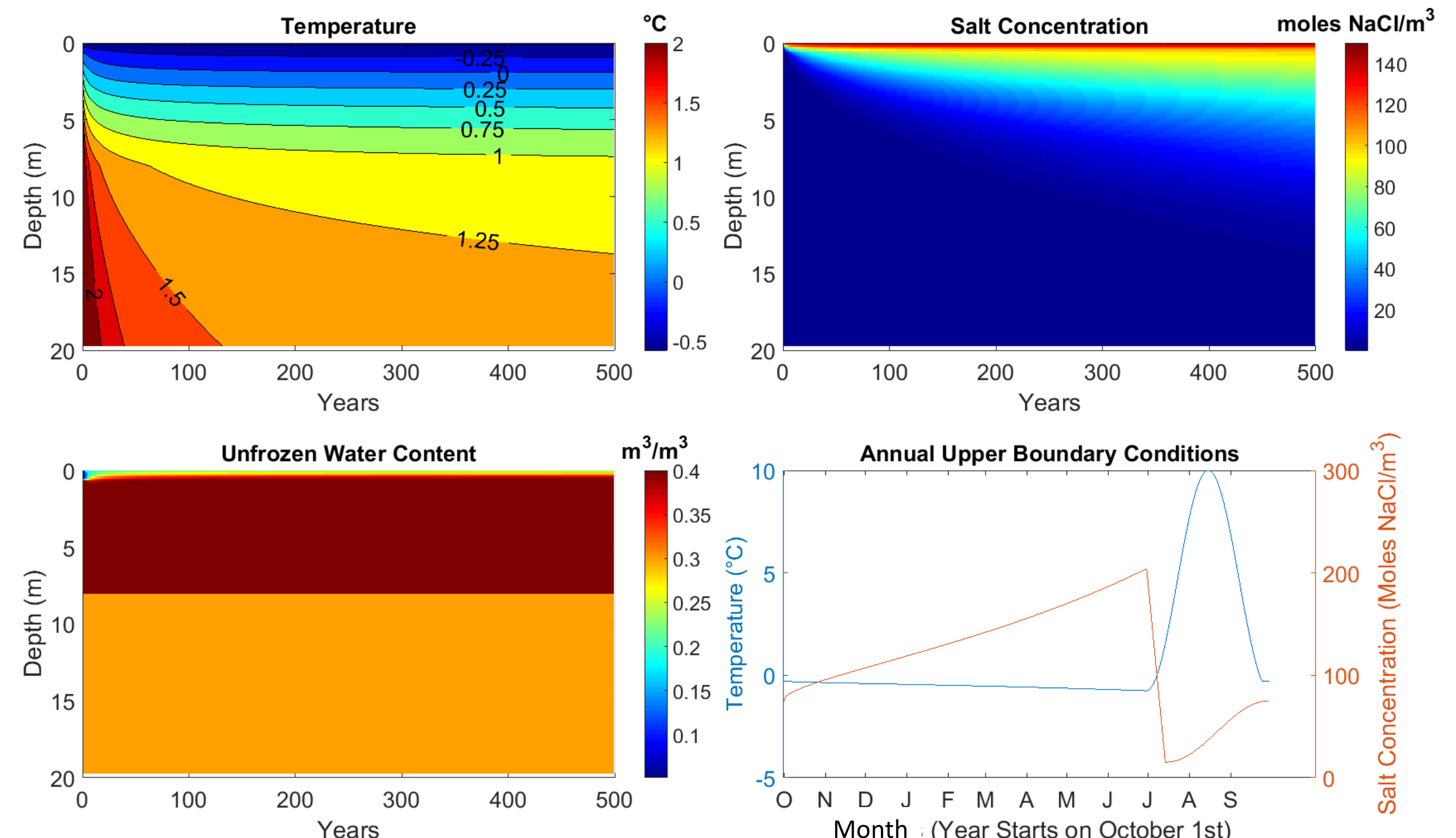


CryoGRID Modelling of Freshwater Talik Submerged by Saltwater at Polar Fox Lake

Grounded Ice Zone (1.2m Depth) – Yearly Model Outputs Every August 1st

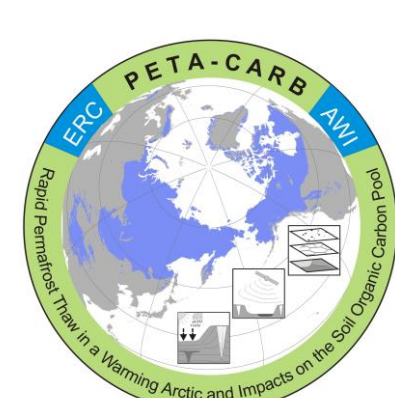


Lake Centre (3m Depth) – Yearly Model Outputs Every April 24th



CryoGRID Reference:

Westermann, S., Schuler, T. V., Gislås, K., & Etzelmüller, B. (2013). Transient thermal modeling of permafrost conditions in Southern Norway. *The Cryosphere*, 7(2), 719.



European Research Council

