

**Benjamin M. Jones**  
University of Alaska Fairbanks, Fairbanks, AK, United States

**Craig E. Tweedie**  
University of Texas at El Paso, El Paso, TX, United States

**Ming Xiao**  
Pennsylvania State University, State College, PA, United States

**Vladimir A. Alexeev**  
University of Alaska Fairbanks, Fairbanks, AK, United States

**Alisa Baranskaya**  
Lomonosov Moscow State University, Moscow, Russia

**Nataliya Belova**  
Lomonosov Moscow State University, Moscow, Russia

**Emily Bristol**  
University of Texas at Austin, TX, United States

**Diana L Bull**  
Sandia National Laboratories, Albuquerque, NM, United States

**Guangqing Chi**  
Pennsylvania State University, State College, PA, United States

**Scott Dallimore**  
Geological Survey of Canada, Pacific, Sidney, BC, Canada

**Li H Erikson**  
USGS, Santa Cruz, CA, United States

**Louise M. Farquharson**  
University of Alaska Fairbanks, Fairbanks, AK, United States

**Chris Flanary**  
Integral Consulting Inc., Santa Cruz, CA, United States

**Jennifer Frederick**  
Sandia National Laboratories, Albuquerque, NM, United States

**Matthias Fuchs**  
Alfred Wegener Institute Helmholtz Centre for Polar and Marine Research, Potsdam, Germany

**Matthew A. Thomas**  
USGS, Geologic Hazards Science Center, Golden, CO, United States

**Matt C. Strzelecki**  
University of Wrocław, S.Baranowski Polar Station Spitsbergen

**Dmitry A Streletskiy**  
George Washington University, Washington, DC, United States

**Nikolay I Shiklomanov**  
George Washington University, Washington, DC, United States

**Anatoly Sintsov**  
SINTEF, Trondheim, Norway

**Natalya N. Shabanova**  
Lomonosov Moscow State University, Moscow, Russia

**Edward Schuur**  
Northern Arizona University, Flagstaff, AZ, United States

**Torsten Sachs**  
GFZ German Research Centre for Geosciences, Potsdam, Germany

**Joel C Rowland**  
Los Alamos National Laboratory, Los Alamos, NM, United States

**Vladimir E Romanovsky**  
University of Alaska Fairbanks, Fairbanks, AK, United States

**Bruce M Richmond**  
USGS, Santa Cruz, CA, United States

**Andrey N Petrov**  
University of Northern Iowa, Cedar Falls, IA, United States

**Pier Paul Overduin**  
Alfred Wegener Institute Helmholtz Centre for Polar and Marine Research, Potsdam, Germany

**Jacquelyn Overbeck**  
Alaska Division of Geological and Geophysical Surveys, Anchorage, AK, United States

**Ann Gibbs**  
USGS, Santa Cruz, CA, United States

**Jessica Graybill**  
Colgate University, Hamilton, NY, United States

**Mikhail Grigoriev**  
Melnikov Permafrost Institute SB RAS, Yakutsk, Russia

**Guido Grosse**  
Alfred Wegener Institute Helmholtz Centre for Polar and Marine Research, Potsdam, Germany

**Frank Günther**  
Institute of Geosciences, University of Potsdam, Germany

**Kathleen E Halvorsen**  
Michigan Technological University, Houghton, MI, United States

**Vladislav Isaev**  
Lomonosov Moscow State University, Moscow, Russia

**Anna M. Irrgang**  
Alfred Wegener Institute Helmholtz Centre for Polar and Marine Research, Potsdam, Germany

**Go Iwahana**  
University of Alaska Fairbanks, Fairbanks, AK, United States

**Anne M. Jensen**  
University of Alaska Fairbanks, Fairbanks, AK, United States

**Craig A. Jones**  
Integral Consulting Inc., Santa Cruz, CA, United States

**Mikhail Z Kanevskiy**  
University of Alaska Fairbanks, Fairbanks, AK, United States

**Jeremy Kasper**  
University of Alaska Fairbanks, Fairbanks, AK, United States

**Nicole Kinsman**  
NOAA National Ocean Service National Geodetic Survey, Anchorage, AK, United States



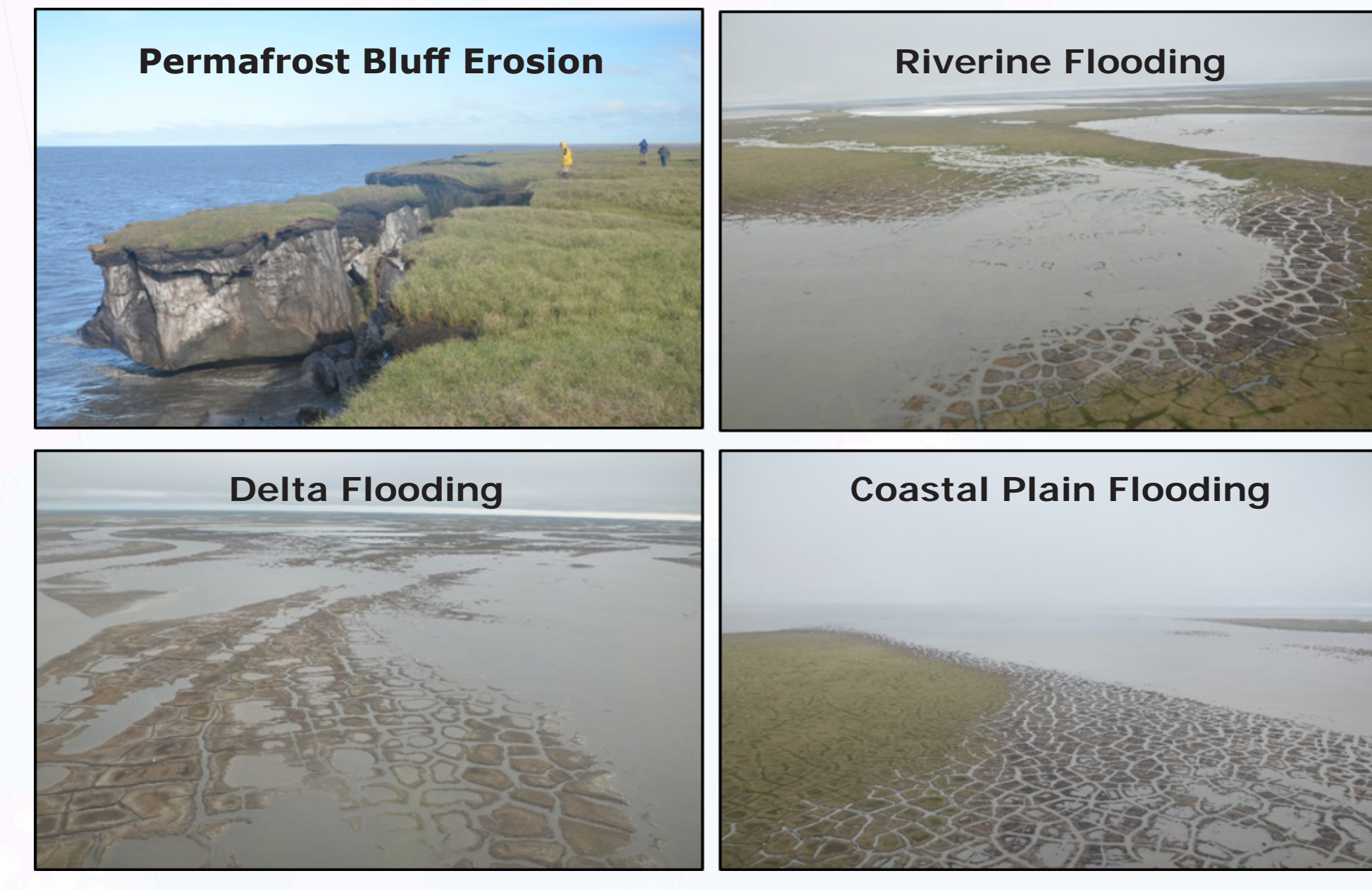
# The Permafrost Coastal Systems Network (PerCS-Net) C13D-1351: An emerging international network focused on permafrost coastal systems in transition

Funding for PerCS-Net provided by U.S. NSF grant OISE 1927553, 1927137, 1927373, co-funded by the Arctic System Science Program in the Office of Polar Programs.

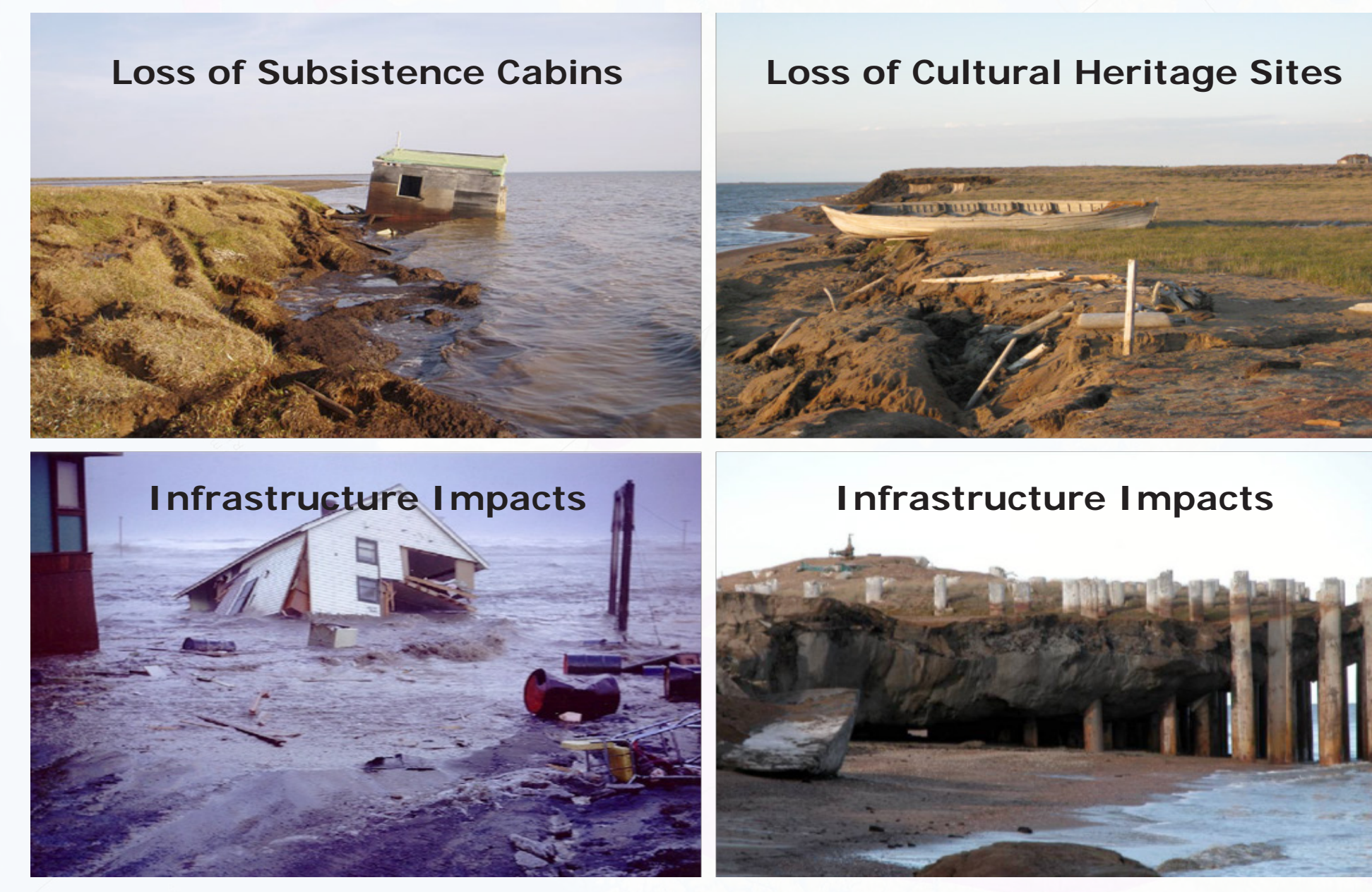
## Permafrost Coasts - A Wicked Problem

There is no place more representative of the challenges faced at the intersection of natural, social, and built systems than the rapidly changing Arctic. In particular, permafrost coastal systems are sensitive to Arctic Ocean-land linkages and permafrost degradation, owing to permafrost thaw and land subsidence, rising sea levels, reductions in sea ice cover and the resulting increase in open water, and increasingly frequent and impactful storms. These changes in the Arctic system have increased the vulnerability of permafrost coasts to erosion and altered coastal morphologies, ecosystems, and carbon export to oceans. Aside from environmental impacts, this presents a wicked problem for the many human interests operating along the arctic coasts, including those involved in traditional lifestyles, as well as industrial and commercial activities. To improve our understanding and management of permafrost coastal change, a coordinated approach is required that facilitates knowledge exchange across borders, the involvement of a wide array of stakeholders, and the incorporation of research from a diverse range of fields.

### Coastal Erosion and Thaw Subsidence



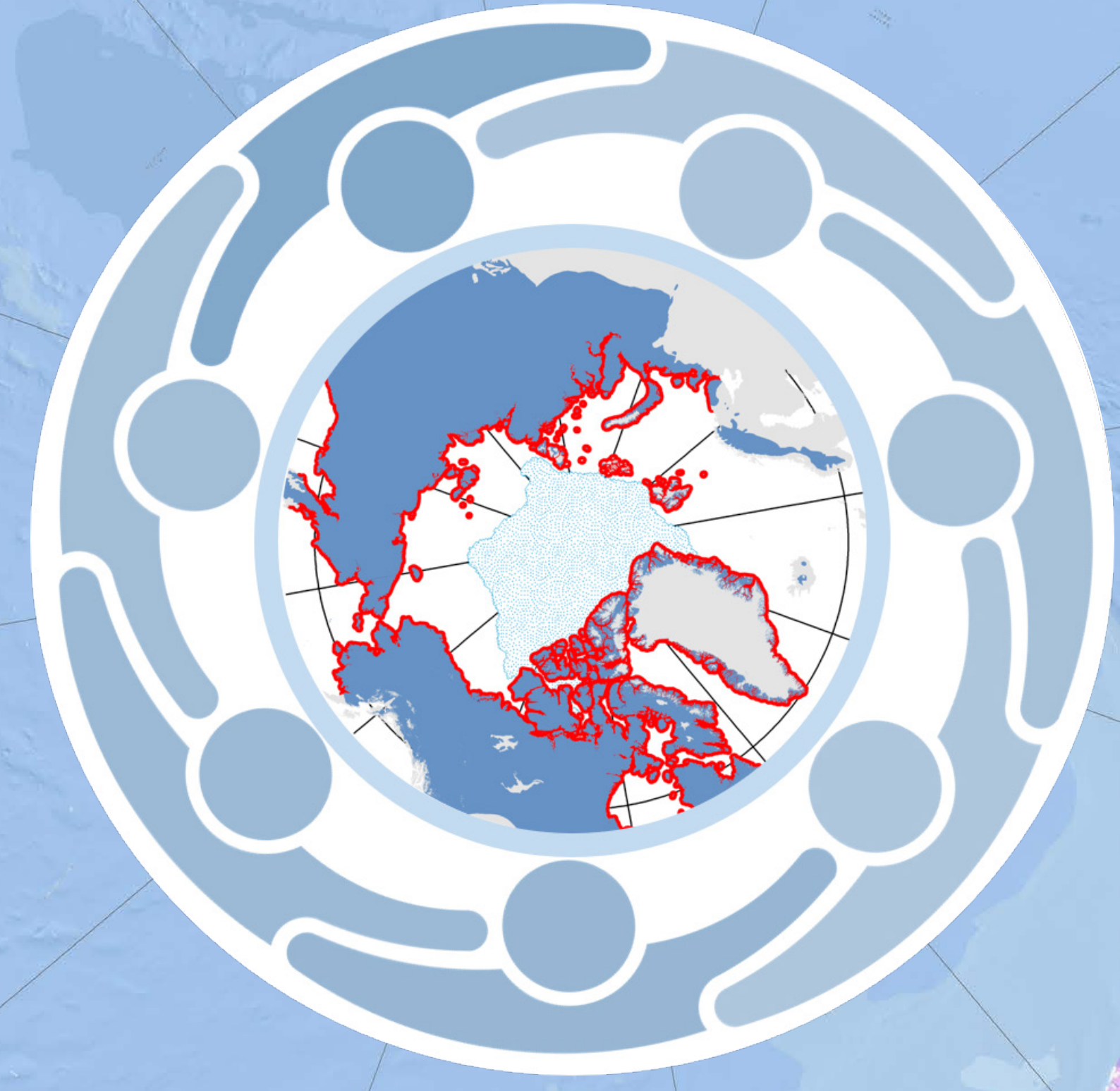
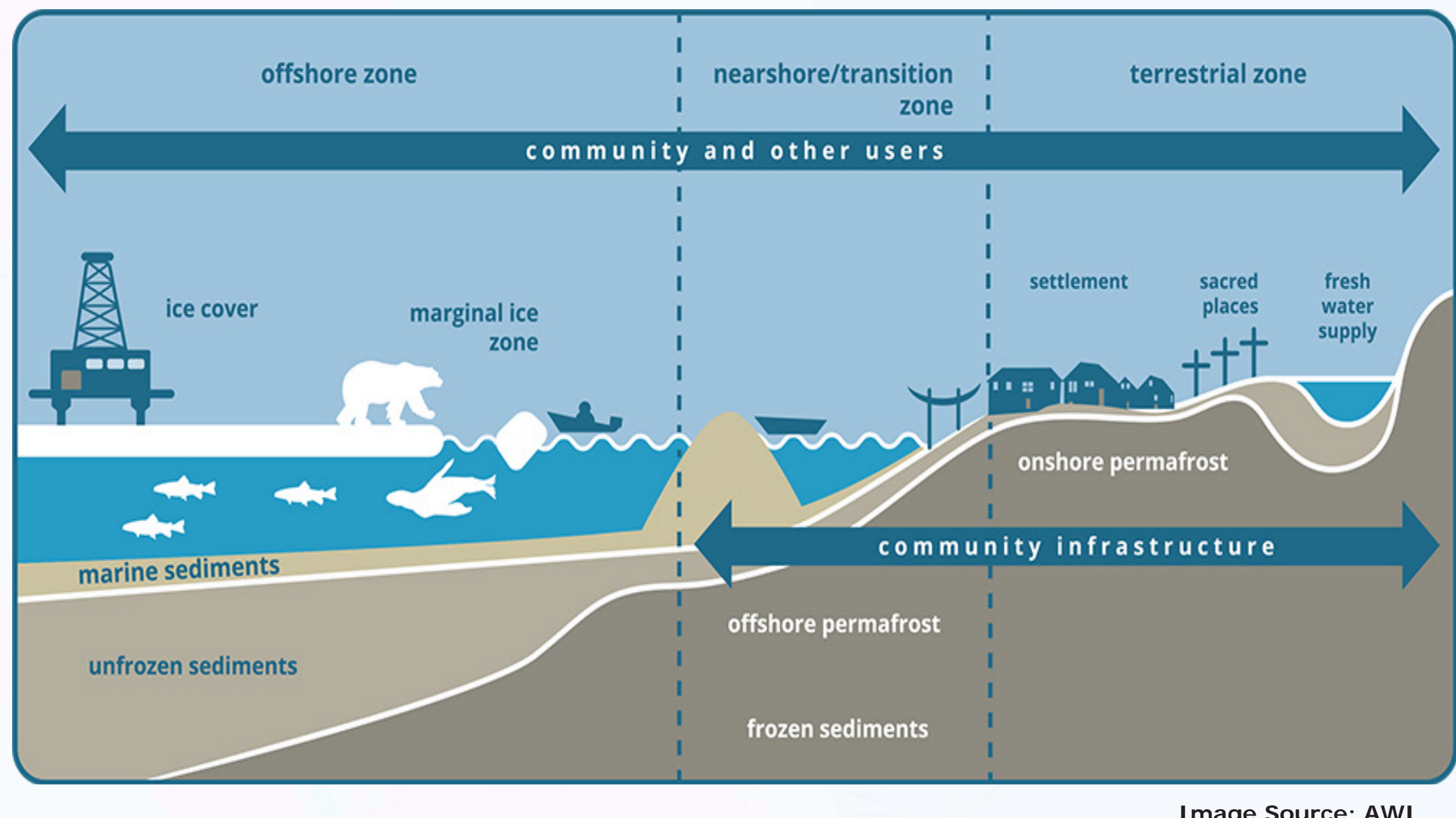
### Socioeconomic and Cultural Impacts



*A better understanding of permafrost coastal systems and how they are responding to changes in the Arctic is important since a high proportion of Arctic residents live on or near coastlines, and many derive their livelihood from terrestrial and nearshore marine resources.*

## PerCS-Net Mission

The Permafrost Coastal Systems Network will accelerate the process of scientific discovery, facilitate public access to scientific data, and promote convergence through an international, transdisciplinary network focused on science, engineering, and societal issues associated with permafrost-affected coasts and communities in the Arctic.

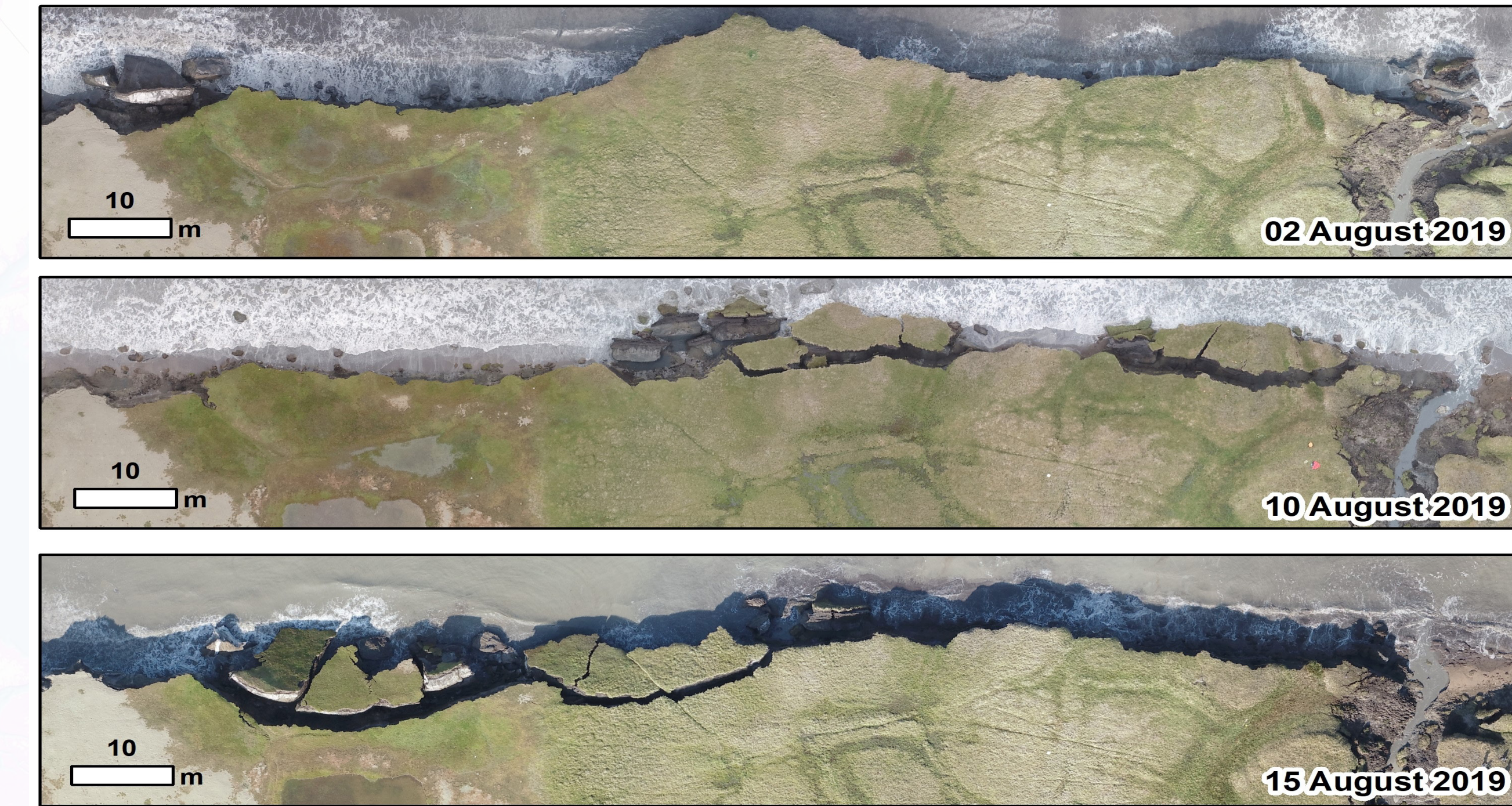


Join the Network!



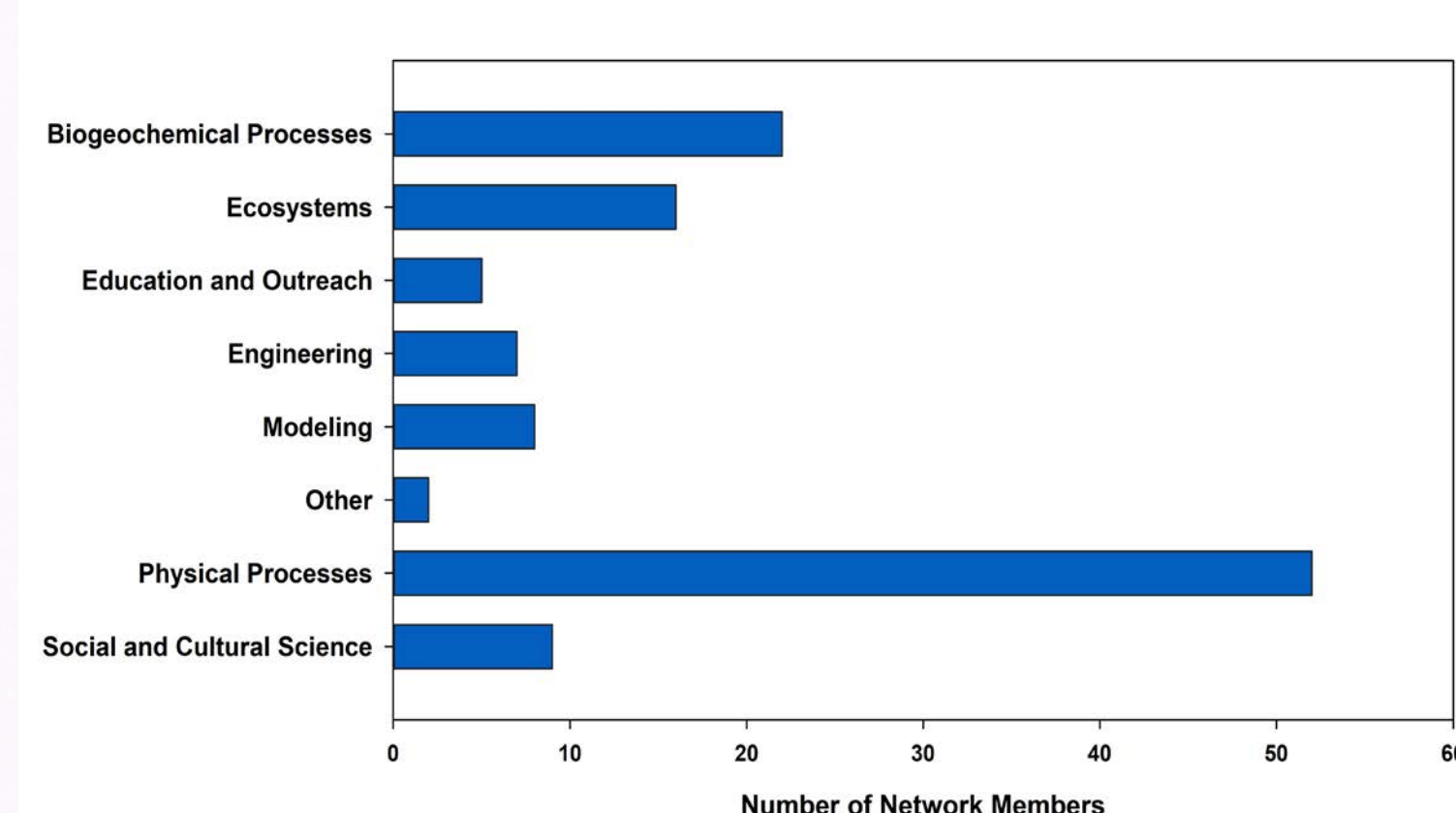
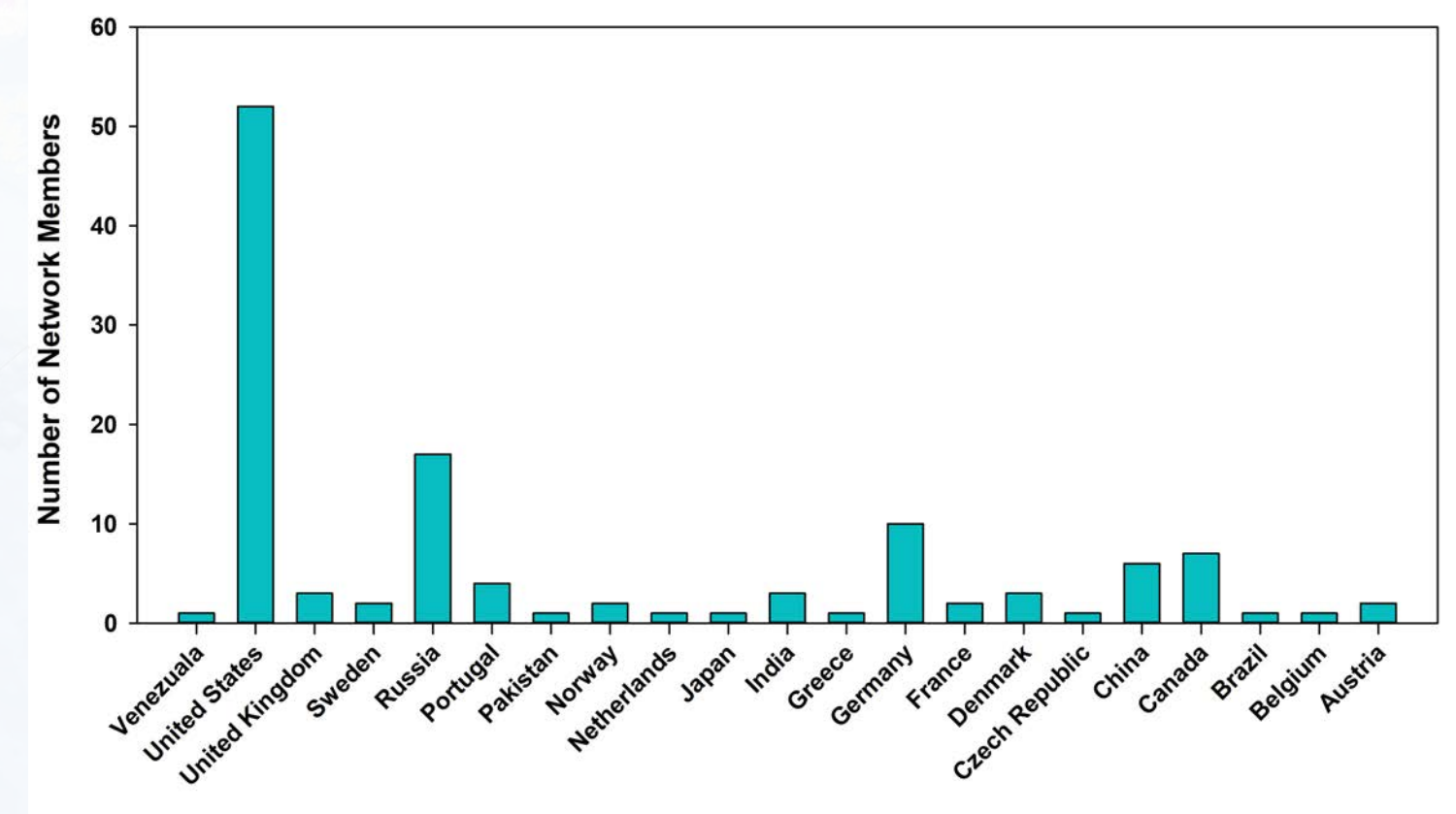
## PerCS-Net Goals and Objectives

- (1) develop internationally recognized protocols for quantifying the multitude of changes and impacts occurring in Arctic coastal permafrost systems,
- (2) sustain observations from representative coastal key sites,
- (3) unify annual and decadal-scale observations of circum-arctic permafrost-influenced coasts,
- (4) refine a circum-arctic coastal mapping classification system and web-based delivery of geospatial information for management planning purposes and readily accessible information exchange for vulnerability assessments,
- (5) engage local communities and observers to capture impacts on subsistence and traditional livelihoods, and
- (6) promote synergy across networks to foster the next generation of students, postdoctoral scholars, and early-career researchers faced with the known and unknown challenges of the future Arctic System.



## Strengthening Connections across Borders

An integrative, international network focused on permafrost coastal systems is required to realize and address the scale and complexity of the processes, dynamics, and responses of this system to physical, ecological, and social change. Currently, there are 131 members from 21 countries that are aligned with several themes. Over the next year, PerCS-Net will endeavor to forge connections with underrepresented groups and nations, especially those within the Arctic.



**Stanislav A. Ogorodov**  
Lomonosov Moscow State University, Moscow, Russia

**Anna V. Novikova**  
Lomonosov Moscow State University, Moscow, Russia

**Ingmar Nitze**  
Alfred Wegener Institute Helmholtz Centre for Polar and Marine Research, Potsdam, Germany

**Alejandro Mota**  
Sandia National Laboratories, Albuquerque, United States

**James W. McClelland**  
University of Texas Marine Science Institute, Port Aransas, TX, United States

**Alexey Maslakov**  
Lomonosov Moscow State University, Moscow, Russia

**Chris Maio**  
University of Alaska Fairbanks, Fairbanks, AK, United States

**Raed Lubbad**  
Norwegian University of Science and Technology, Trondheim, Norway

**Anna K. Liljedahl**  
University of Alaska Fairbanks, Fairbanks, AK, United States

**Trevor C Lantz**  
University of Victoria, Victoria, BC, Canada

**Hugues Lantuit**  
Alfred Wegener Institute Helmholtz Centre for Polar and Marine Research, Potsdam, Germany

**Aart Kroon**  
University of Copenhagen, København K, Denmark

**Osip Kokin**  
Lomonosov Moscow State University, Moscow, Russia

**Benjamin M. Jones**  
University of Alaska Fairbanks, Fairbanks, AK, United States

**Benjamin M. Jones**  
University of Alaska Fairbanks, Fairbanks, AK, United States

