

Supplement of Earth Syst. Dynam., 11, 35–76, 2020
<https://doi.org/10.5194/esd-11-35-2020-supplement>
© Author(s) 2020. This work is distributed under
the Creative Commons Attribution 4.0 License.



Supplement of

Projecting Antarctica's contribution to future sea level rise from basal ice shelf melt using linear response functions of 16 ice sheet models (LARMIP-2)

Anders Levermann et al.

Correspondence to: Anders Levermann (anders.levermann@pik-potsdam.de)

The copyright of individual parts of the supplement might differ from the CC BY 4.0 License.

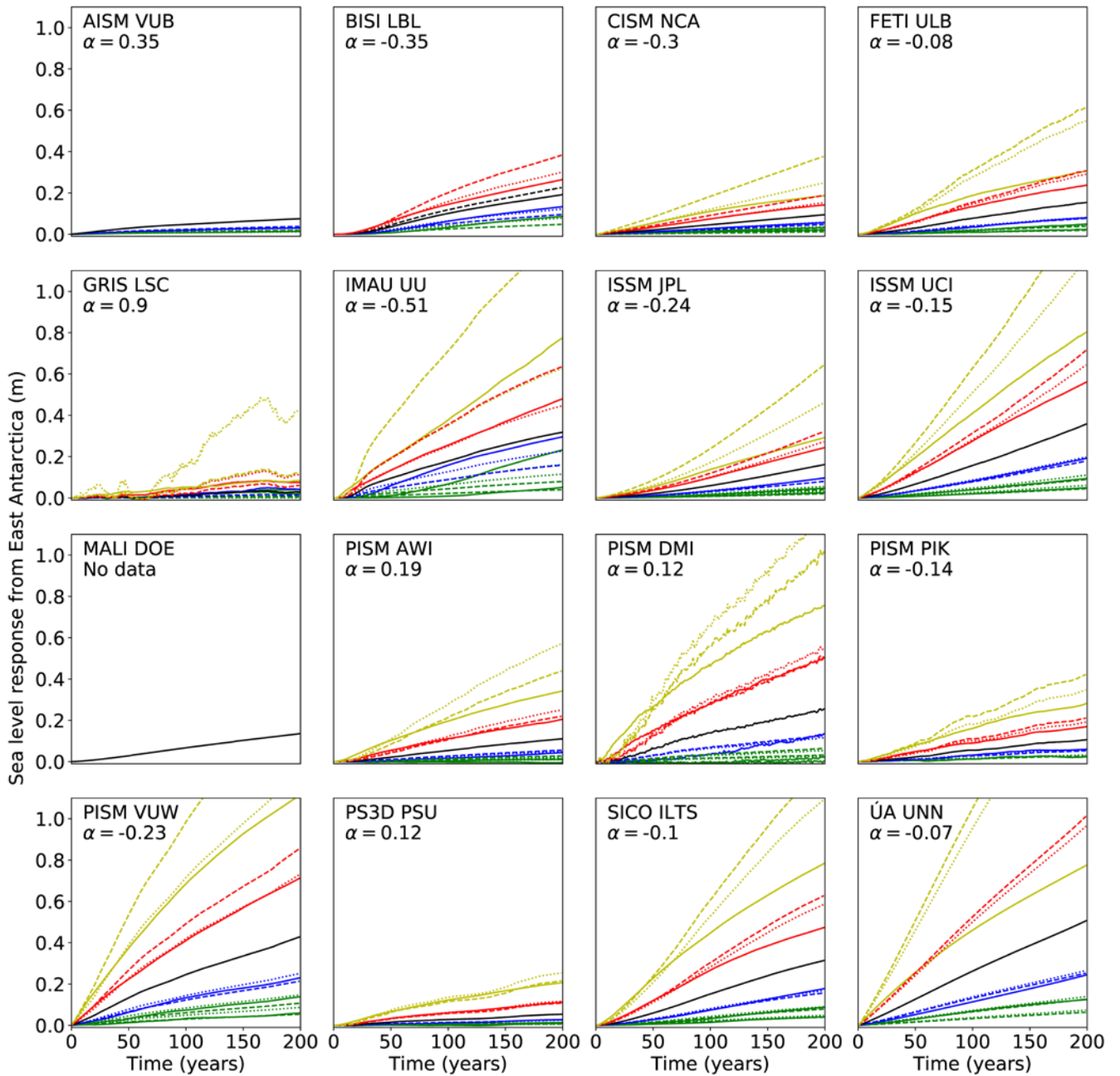


Figure S1a: Linearity check for East Antarctica as in Figure 4 but including the simulations with 2 m/yr (green) and 32 m/yr (yellow) of additional basal melting.

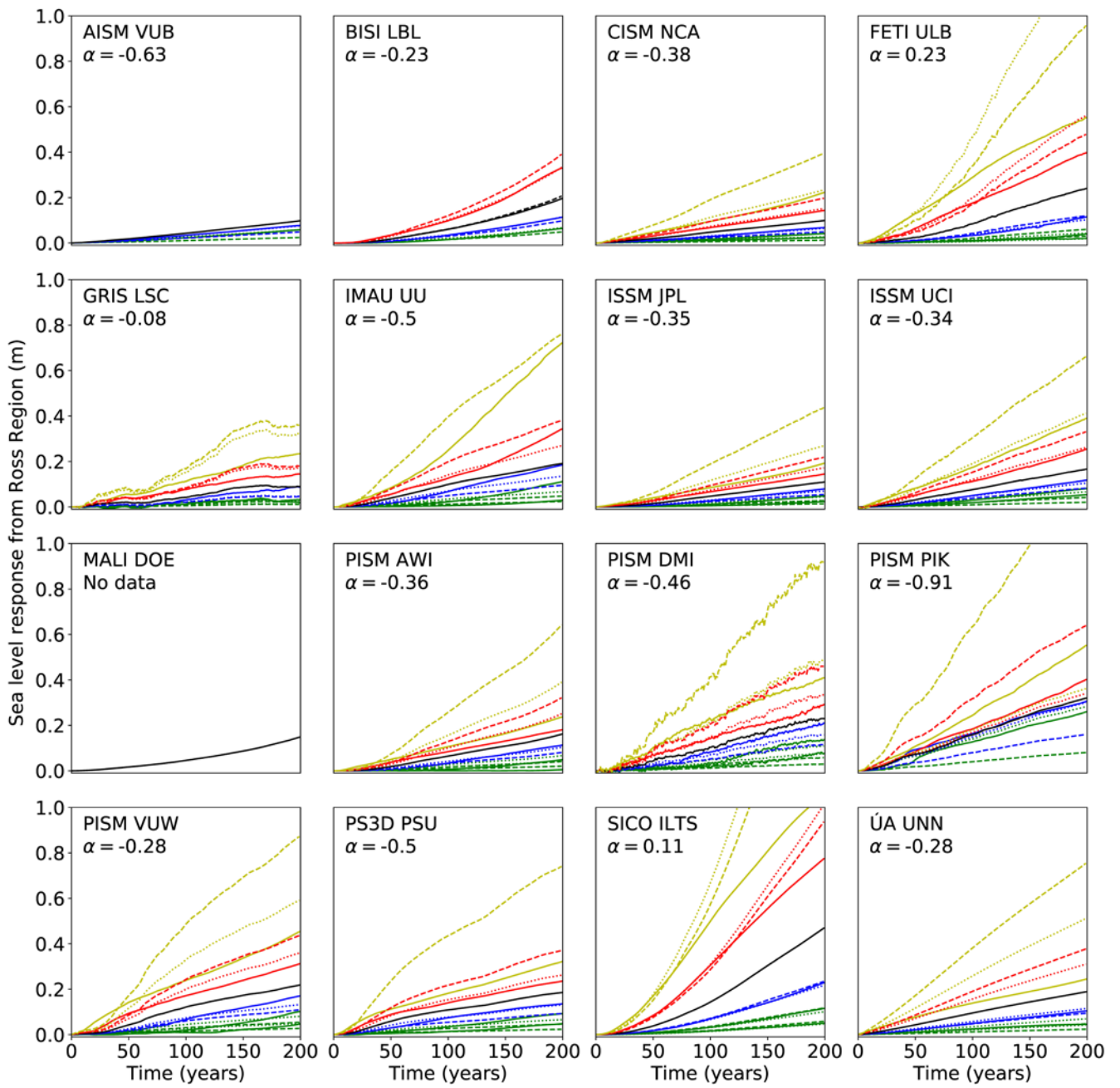


Figure S1b: Linearity check for the Ross region as in Figure S1a.

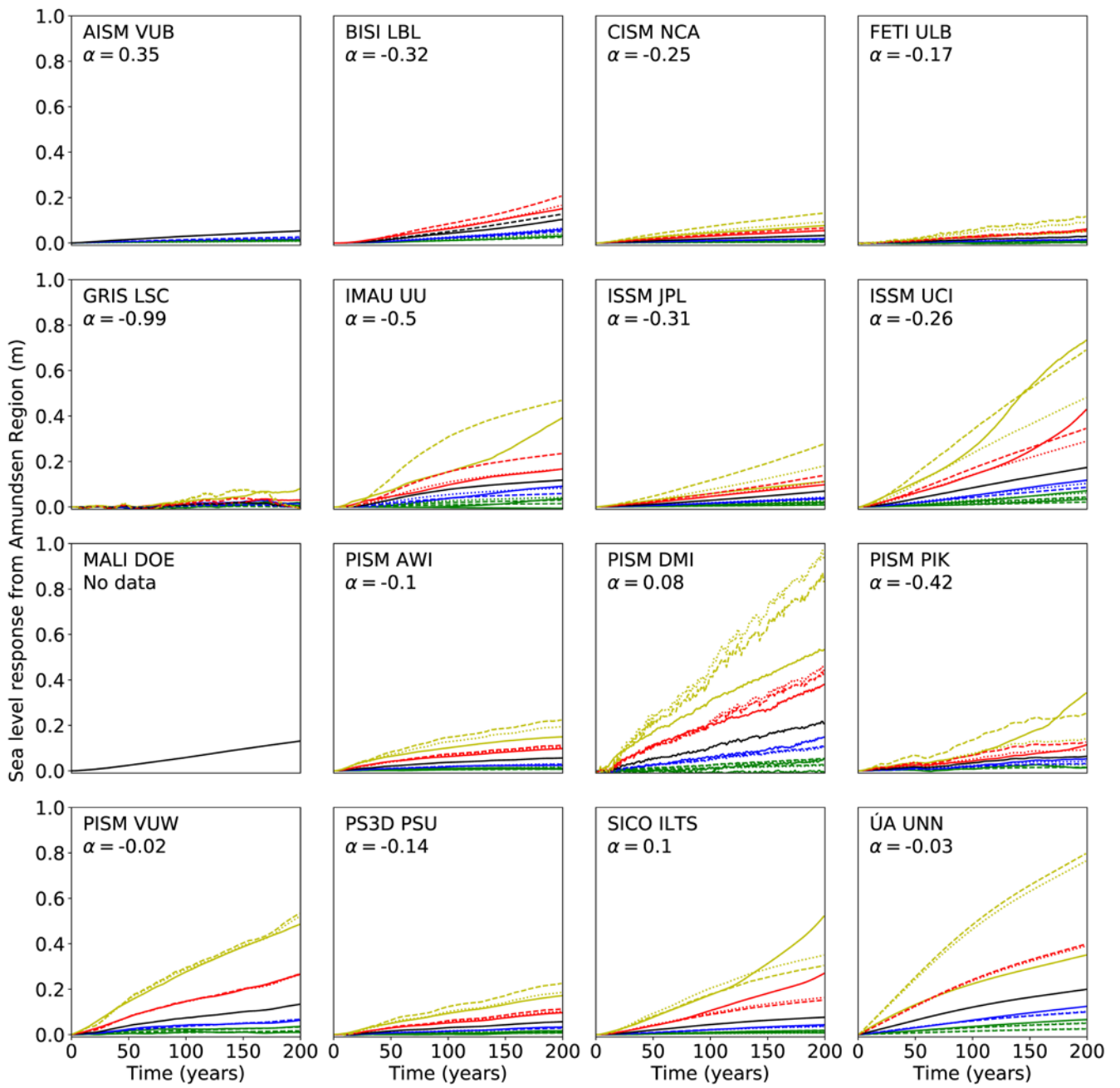


Figure S1c: Linearity check for the Amundsen region as in Figure S1a.

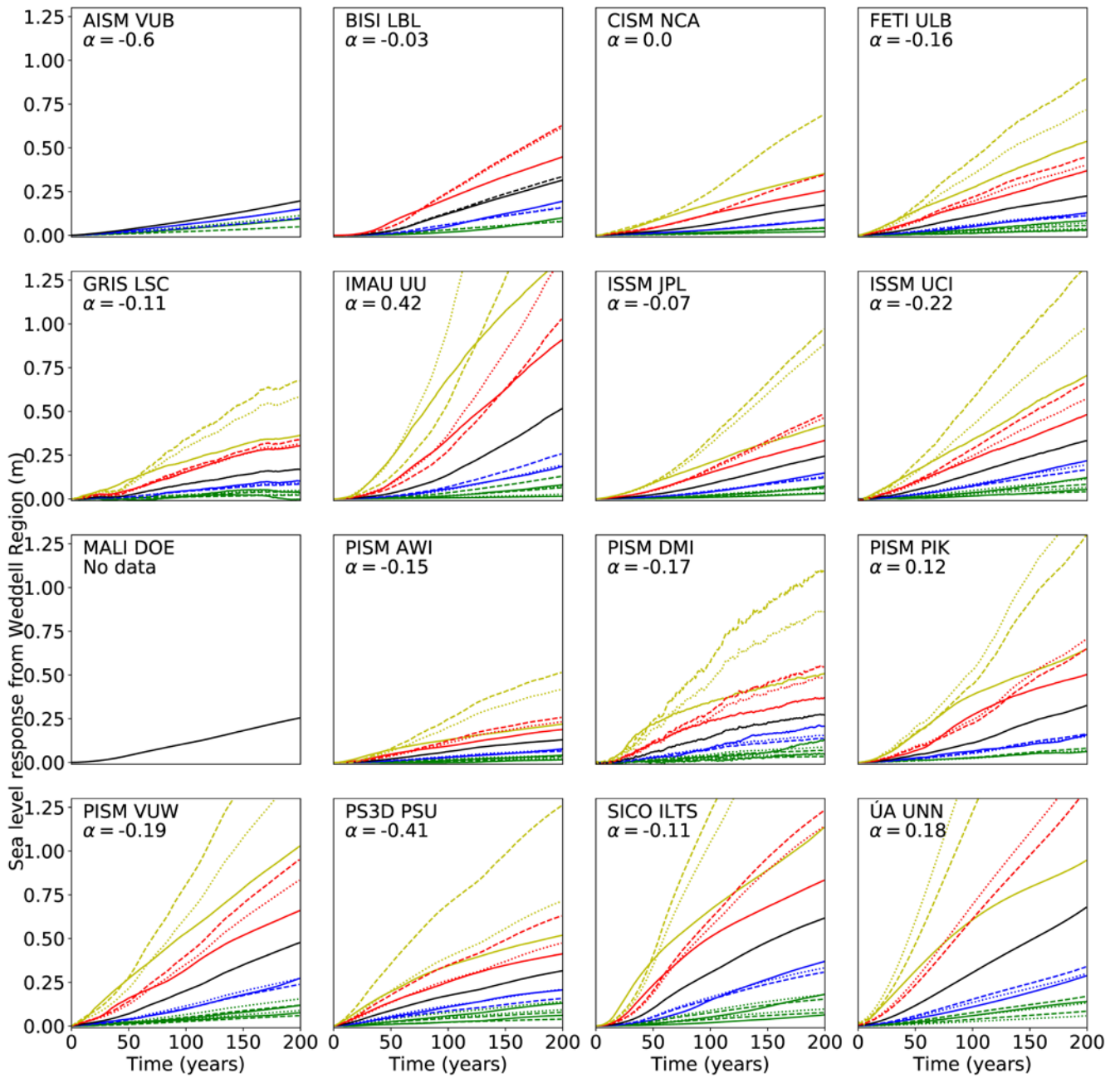


Figure S1d: Linearity check for the Weddell region as in Figure S1a.

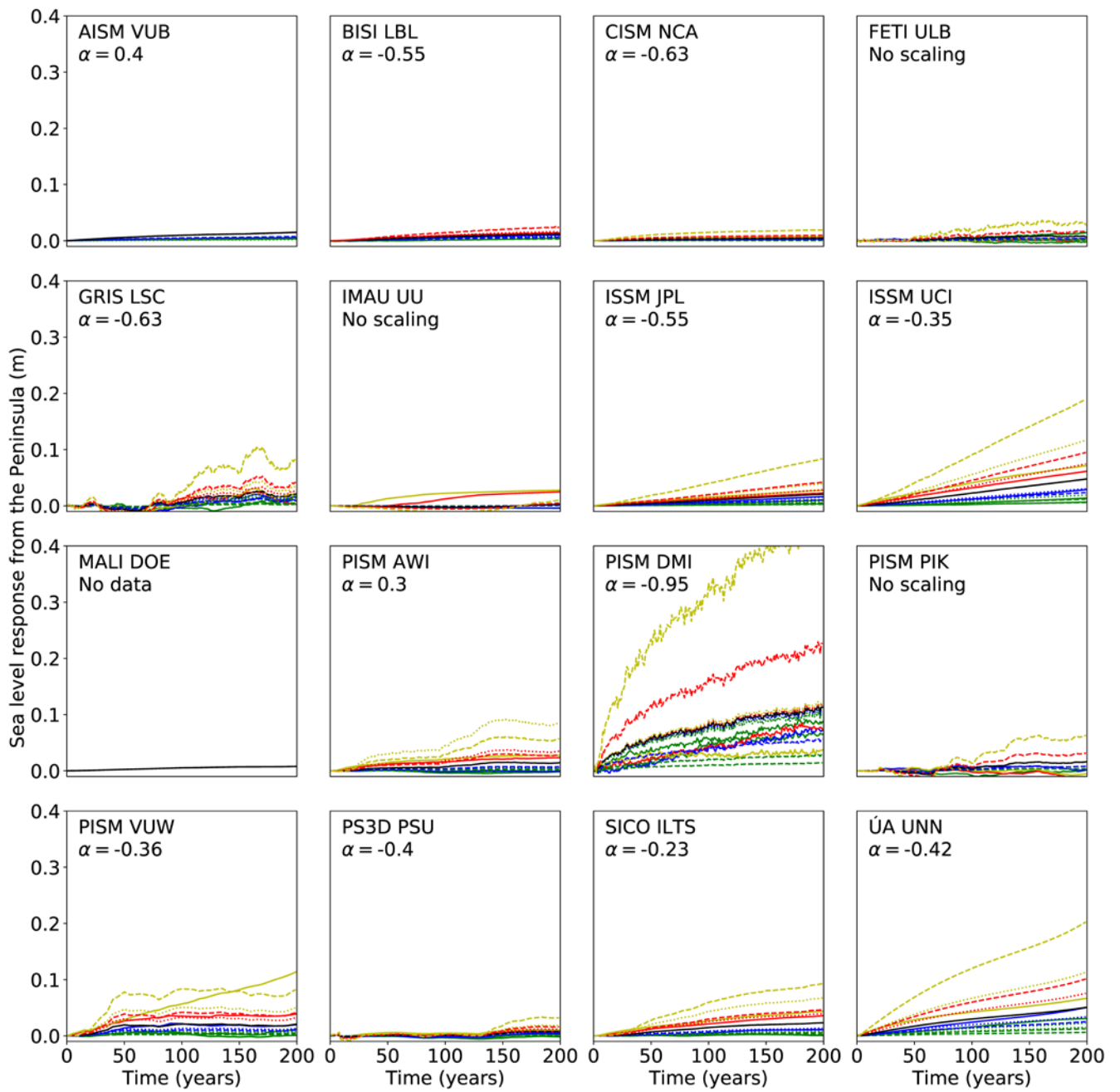


Figure S1e: Linearity check for the Antarctic Peninsula as in Figure S1a.

